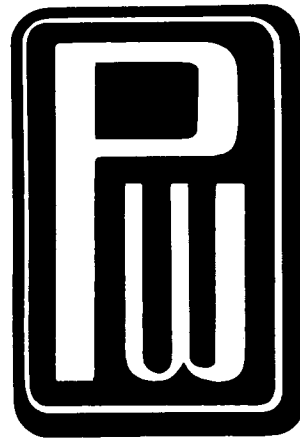


FACILITIES of



PRESS WIRELESS

MANUFACTURING COMPANY INC.

Executive Offices: Rockville, Conn.

Plants at: Rockville, Conn. and West Newton, Mass.

PRESS WIRELESS

MANUFACTURING COMPANY INC.

F O R E W O R D

Press Wireless Manufacturing Company, Inc. was incorporated in 1941 in the State of Massachusetts under the original name of Milliken Machine Company with all operations located in one plant in West Newton, Massachusetts. The facilities of the former Press Wireless Manufacturing Corporation of Hicksville, New York were acquired in 1948 and the corporate name changed to Press Wireless Manufacturing Company, Inc.

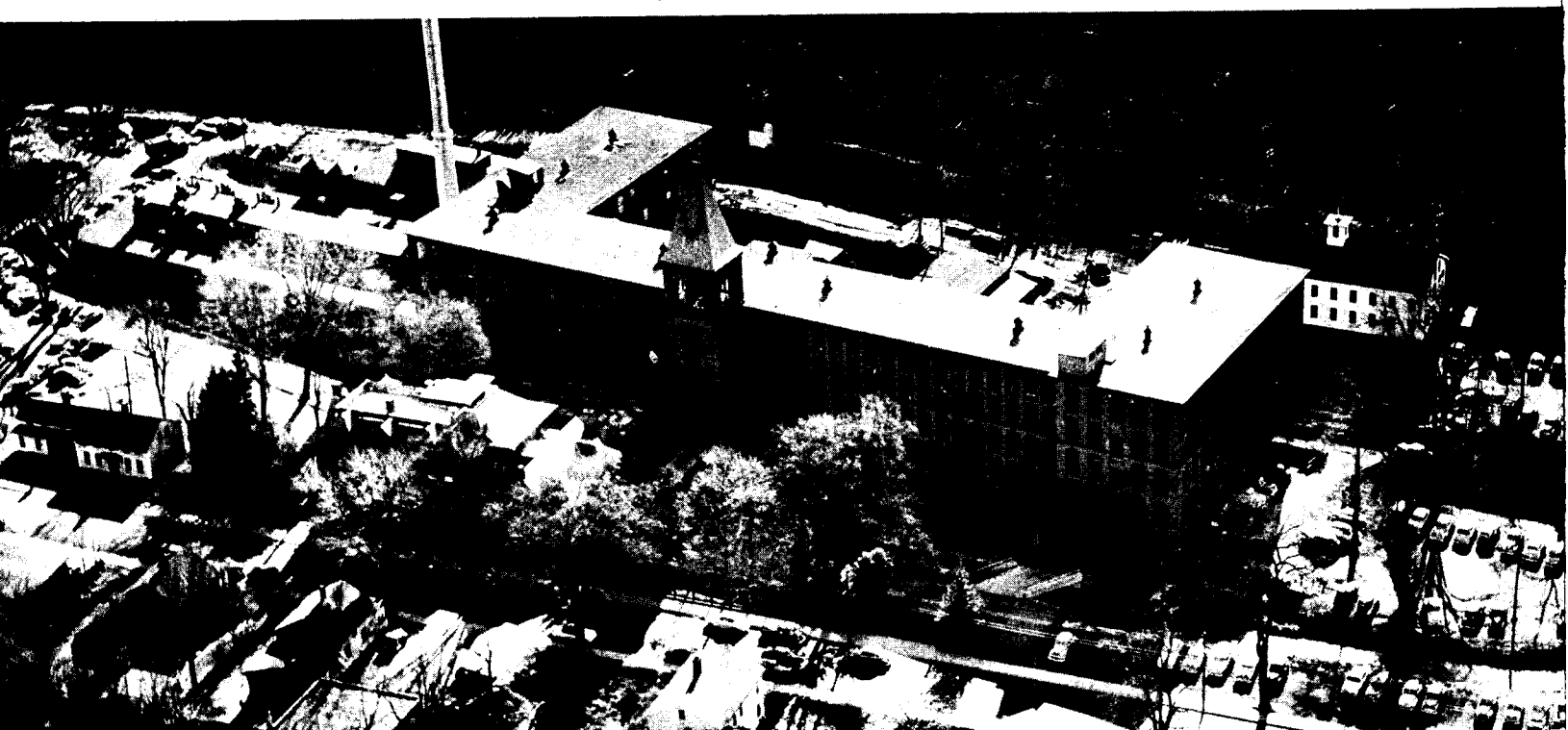
In 1952 the controlling interest in Press Wireless Manufacturing Company, Inc. was acquired by La-Pointe Electronics Inc. and the facilities of the Hicksville Division were moved to a more spacious plant in Rockville, Connecticut. This plant was adapted to the quantity production of electronic and precision electro-mechanical parts and equipment.

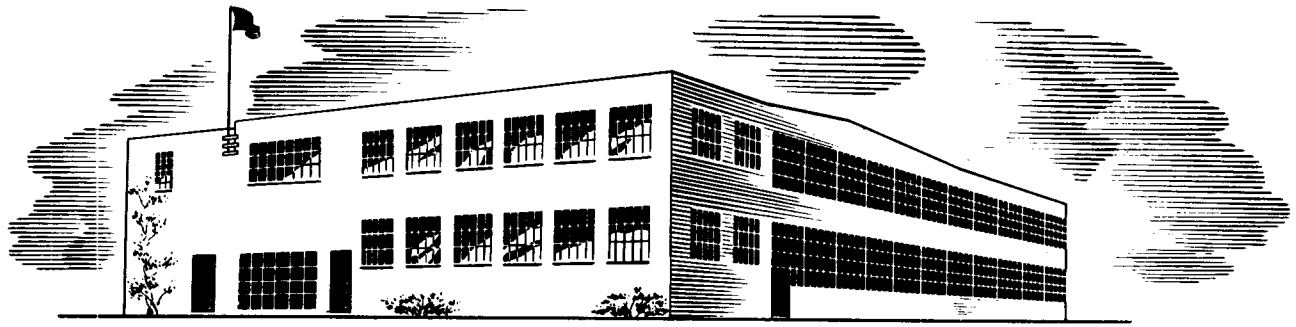
The main endeavor of the company has been directed towards the development, design and manufacture of communication equipment, electronic test equipment, radar components and precision electro-mechanical devices for both commercial and military use.

Press Wireless transmitting and radioteletype equipment is in use today throughout the world. In fact, the general use of the Moduplex, Duoflex and Frequency Shift systems of communications is a result of Press Wireless developments.

The expanded facilities of Press Wireless Manufacturing Company, Inc., including both the Rockville and West Newton Divisions, are available to serve your needs in the development, design and manufacture of all types of electronic and precision electro-mechanical equipment.

Aerial View, Rockville Division and Main Offices





West Newton, Massachusetts Division

ROCKVILLE DIVISION

The Rockville Division of Press Wireless is equipped to handle the engineering, design and production of electronic equipment, electro-mechanical devices, sheet metal and precision machined parts in quantities ranging from pilot runs to full scale quantity production. This plant provides a total of approximately 156,000 square feet of manufacturing space exclusive of a separate administration building which houses the executive offices of both Press Wireless and LaPointe Electronics Inc.

The engineering development laboratory with its associated design and drafting departments occupies approximately 6,600 square feet in one wing of the factory building.

The tool room, precision machine shop and sheet metal shop occupy approximately 35,000 square feet and the remainder of the factory building is used for the assembly, wiring and test of electronic equipment and television accessories as the work load necessitates.

Adequate storage facilities are available in a separate building with about 5,000 square feet of area located within a few hundred feet of the main factory building.

Both motor and rail transportation facilities are available for convenient and rapid shipment of materials to all major cities in the United States.

The extensive facilities of the engineering laboratory, machine shop and sheet metal shop are indicated by the listings of the major items of equipment on the following pages.

WEST NEWTON DIVISION

The West Newton Division of Press Wireless includes a separate research and development labora-

tory with approximately 3,000 square feet of area in a modern fire-proof building with an ADT protective system and a factory building with approximately 10,000 square feet equipped with machine facilities for model shop, pilot run and medium quantity production of specialized electronic and precision electro-mechanical equipment.

This plant is fully staffed with competent engineers, laboratory technicians and skilled machinists necessary for the handling of development projects and the fabrication of specialized equipment in the communication, navigation, radar and electronic test equipment fields.

Close cooperation and liaison between the West Newton and Rockville plants insure the most effective exchange not only of facilities but also of engineering talent as the need arises.

PERSONNEL

The personnel of Press Wireless has kept abreast of the advancement in techniques and the expansion of facilities. From management, supervision and engineering to machinists, technicians and assemblers, the hiring of new personnel and a continued training program has kept the caliber of the employees of Press Wireless at a high level. Fortunately both West Newton and Rockville are in areas where there is an adequate supply of skilled personnel, both for engineering and production.

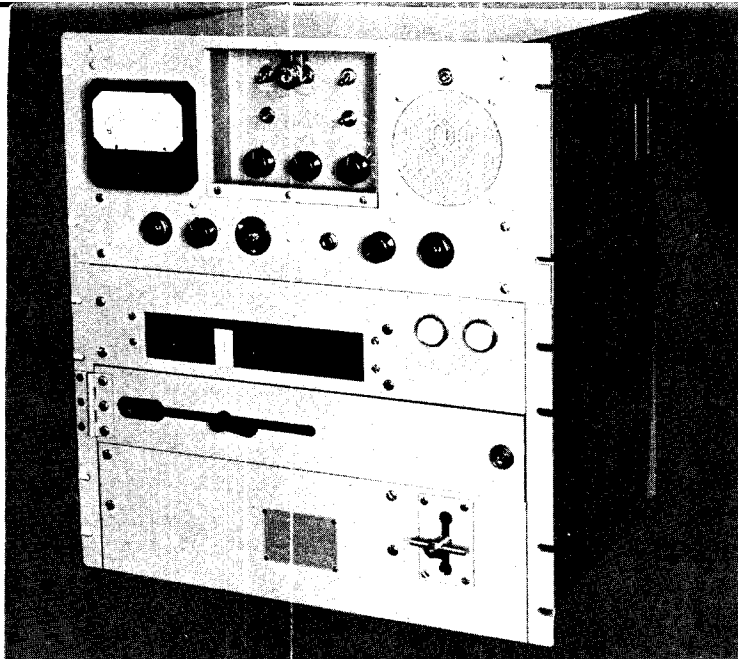
The research and development staff is of the highest calibre and since the basis for a major portion of the Press Wireless operation is electronic engineering, the administration head is himself a professional engineer. A competent group of design, mechanical and production engineers is also attributed to the engineering staffs of both plants.

ROCKVILLE DIVISION

TYPICAL ELECTRONIC PRODUCTS

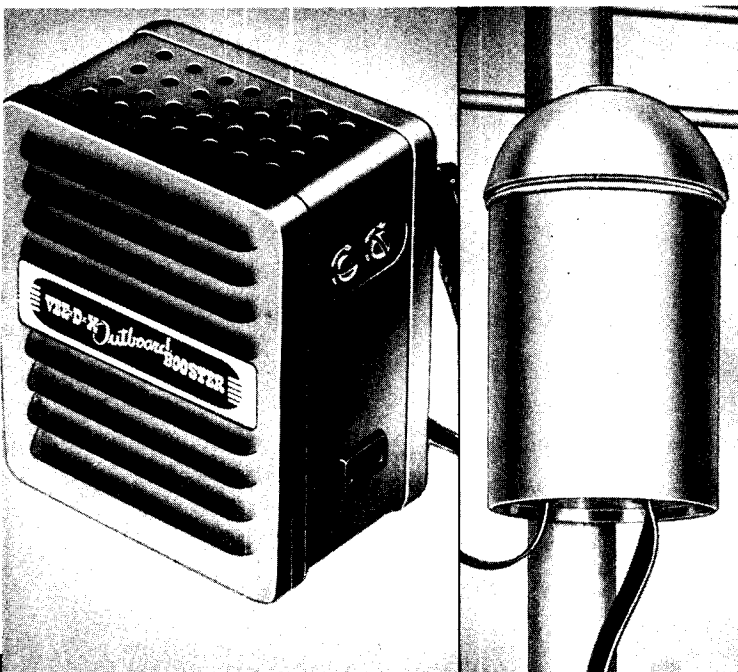
RECORDER — REPRODUCER

This magnetic tape Recorder-Reproducer was developed and designed by Press Wireless to meet the exacting requirements of the Armed Services for a recorder capable of continuous recording for a period of 24 hours on a single roll of tape.



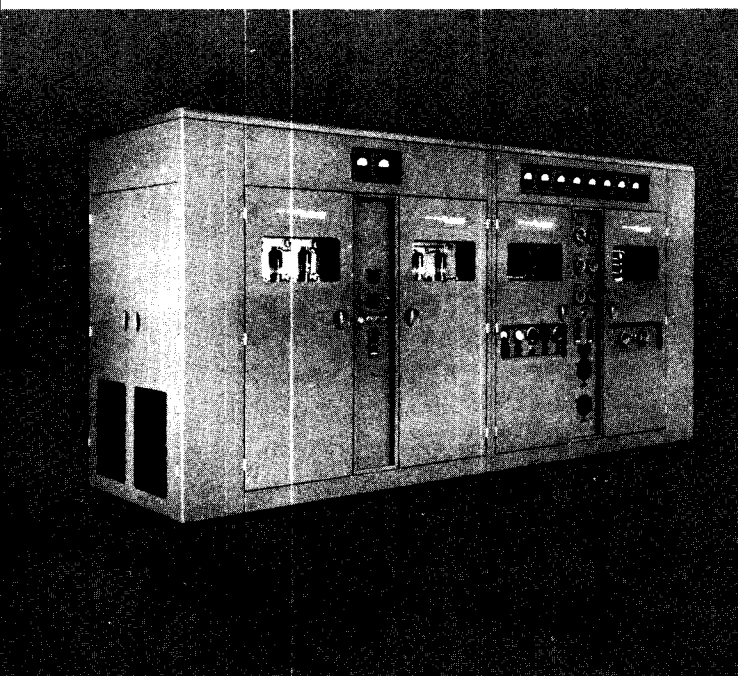
TELEVISION BOOSTER

TV boosters manufactured by Press Wireless and distributed by the VEE-D-X Division of LaPointe Electronics, Inc. require careful circuit design and rigid quality control during production in order to provide dependable operation with high gain and a minimum of background noise.



TRANSMITTER

One of the many transmitters designed and produced by Press Wireless to meet exacting requirements set forth by both the commercial markets and government agencies. Rigid control over design, production and test guaranteed against failures in the field.



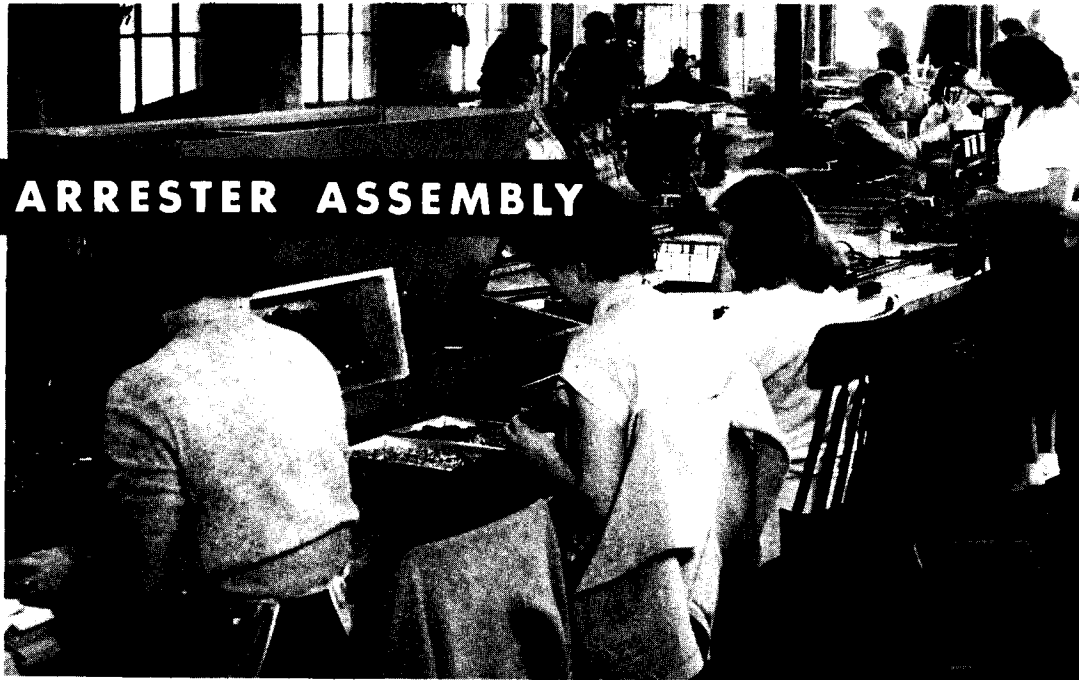
BOOSTER ASSEMBLY

Wiring and Assembly
of Television
Pre-Amplifiers



LIGHTNING ARRESTER ASSEMBLY

Assembly and Sealing
of Lightning
Arrester Units



RECORDER ASSEMBLY

Wiring and Assembly
of 24-hour
Recorder-Reproducers

