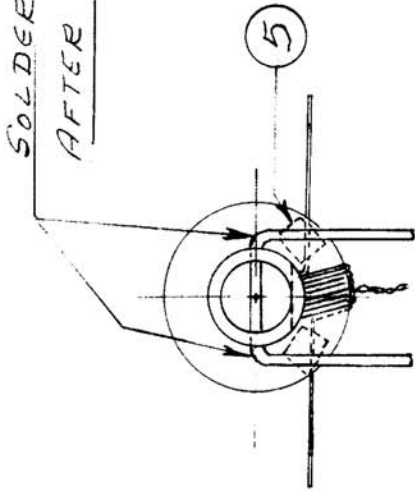
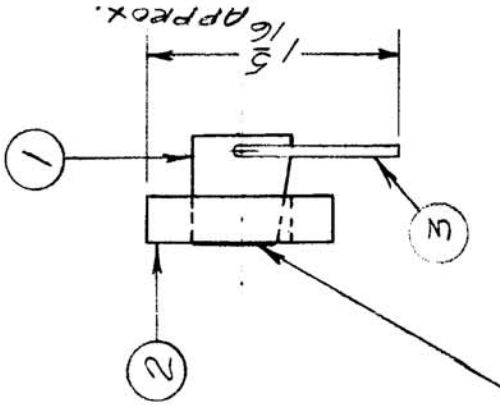


IF IT IS FOUND DESIRABLE TO CHANGE ANY TOLERANCE OR OTHER DETAIL SPECIFIED ON THIS DRAWING NOTIFY THE PURCHASER PROMPTLY.

MAXIMUM ALLOWABLE TOLERANCES HAVE BEEN DETERMINED AND DEVIATIONS WILL BE CAUSE FOR REJECTION. REMOVE ALL BURRS AND SHARP EDGES



SOLDER TWO SPOTS TO HOLD WIRE,
AFTER INSERTING & FORMING BY HAND.

**NOT TO BE RELEASED
W/O AUTHORIZATION**

AUTH. BY:
DATE:

AFTER WINDING CORE AS PER A-10078, ASSEMBLE TUBING
FLUSH WITH CORE FACE, USING SERVICE CEMENT.

NOTICE TO PERSONS RECEIVING THIS DRAWING

THE TECHNICAL MATERIEL CORPORATION claims proprietary right in the material disclosed herein. This drawing is issued in confidence for engineering information only and may not be reproduced or used to manufacture anything shown hereon without permission from THE TECHNICAL MATERIEL CORPORATION to the user. This drawing is loaned for mutual assistance and is subject to recall at any time.

Property of:

THE TECHNICAL MATERIEL CORPORATION
MAMARONECK, NEW YORK

REF. A-10078 →

REQ. ITEM	PART NO.	DESCRIPTION	SYMBOL
6	BS-100	SOLDER - SOFT	
X	TA-1000-H	MASKING TAPE	
X	GL-10001	RADIO SERVICE CEMENT	
1	WL-100-4	SUPPORT #16 TINNED COPPER-SOFT	
1	CI-10001-3	COIL FORM GRADE 3C	
1	PP-10056	CORE MOUNTING - BAKELITE TUBING	

STOCK SIZE	WEIGHT PER PC.

TMC(Canada)LIMITED
OTTAWA ONTARIO

CORE ASSEMBLY

TEO 70

L. MARION
DRAWN
ELEC. DES. APP.
MECH. DES. APP.

CHECKED
FINAL APPROVAL

A-10092

DEC. DIM. \pm
ALL FRAC. DIM. \pm
OTHERS ANGULAR DIM. \pm

CHANGED FROM
DATE CN. NO. DRAFTS CHECKER ENG. APP.

SCALE FULL SIZE

DRILL, PUNCH, COMMERCIAL STOCK
SIZES AND MANUFACTURERS
TOLERANCES ARE NOT INCLUDED.