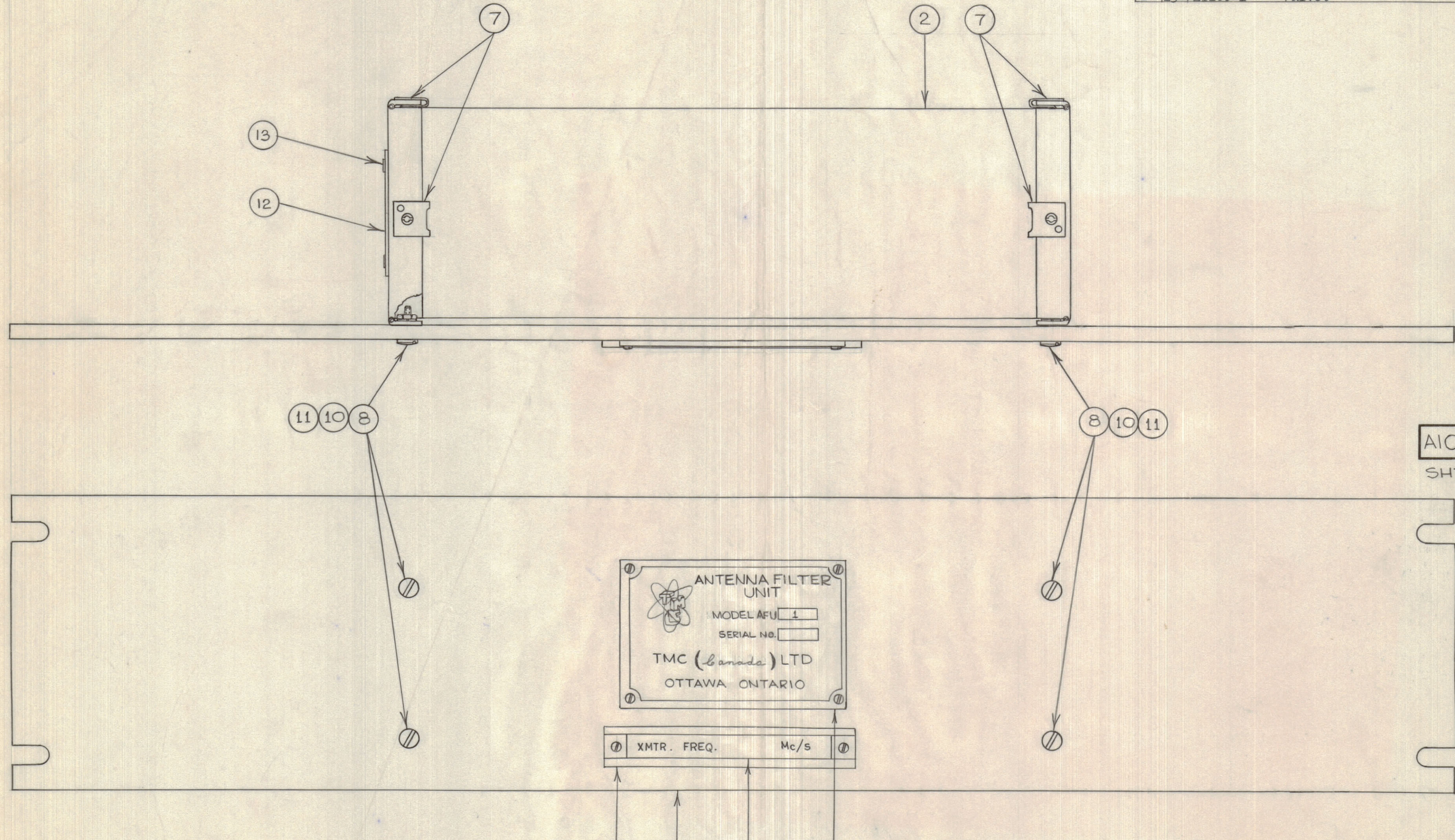


IF IT IS FOUND DESIRABLE TO CHANGE ANY TOLERANCE OR OTHER DETAIL SPECIFIED ON THIS DRAWING NOTIFY THE PURCHASER PROMPTLY.		DIMENSIONS IN INCHES UNLESS OTHERWISE SPECIFIED					
MAXIMUM ALLOWABLE TOLERANCES HAVE BEEN DETERMINED AND DEVIATIONS WILL BE CAUSE FOR REJECTION. REMOVE ALL BURRS AND SHARP EDGES.							
ISSUE	ITEM	CHANGED FROM	DATE	CN. NO.	DRAFTS	CHECKER	ENG. APP.
A		NAMEPLATE ERROR CORRECTED	June 19 1961	1	JPC	JPC	RWS
B	13	ADDED	SEPT 1/61	2	JPC	JPC	RWS

NOTICE TO PURCHASER: THE TECHNICAL MATERIEL CORPORATION claims proprietary right in the material disclosed herein. This drawing is issued in confidence for engineering information only and may not be reproduced or used to manufacture anything shown hereon without permission from THE TECHNICAL MATERIEL CORPORATION to the user. This drawing is loaned for mutual assistance and is subject to recall at any time.

Property of:
THE TECHNICAL MATERIEL CORPORATION
MAMARONECK, NEW YORK

REQ.	ITEM	PART NO.	DESCRIPTION	SYMBOL
1	1	MS-10537	Front Panel	
1	2	MS-10539	Side Plates & Bottom	
1	3	NP-10081-503	Nameplate	
1	4	MS-10540	Identification Slip Holder	
1	5	LD-10160-3	Identification Slip	
1	6	PX-396-3	Guard, Tab	
4	7	NT-108-1	Speed Nut	
4	8	SCBS0632BN7	Screw	
6	9	SFB0256SN3	Screw	
4	10	NTH0632BN8	Nut	
4	11	LW106MRN	Lockwasher	
1	12	NP 354	Nameplate identification	
2	13	EY100-1	Rivet	



A10323 B
SHT. 1 OF 2.

TOLERANCES	SCALE: 1:1
ALL OTHERS	DRILL, PUNCH, COMMERCIAL STOCK SIZES AND MANUFACTURERS TOLERANCES ARE NOT INCLUDED.

AFU-1	E 1143-P	JUNE 2/61
MODEL	PROJECT NO.	DATE

STOCK SIZE		TMC (Canada) LIMITED OTTAWA ONTARIO	
MATERIAL		FRONT PANEL ASSEMBLY ANTENNA FILTER UNIT	
TYPE & TEMPER	JPC	MECH. DES. APP.	RWS
HEAT TREAT. SPEC.	Checked	ELEC. DES. APP.	Asoc
FINISH & SPEC. NO.	FINAL APPROVAL		A10323 B

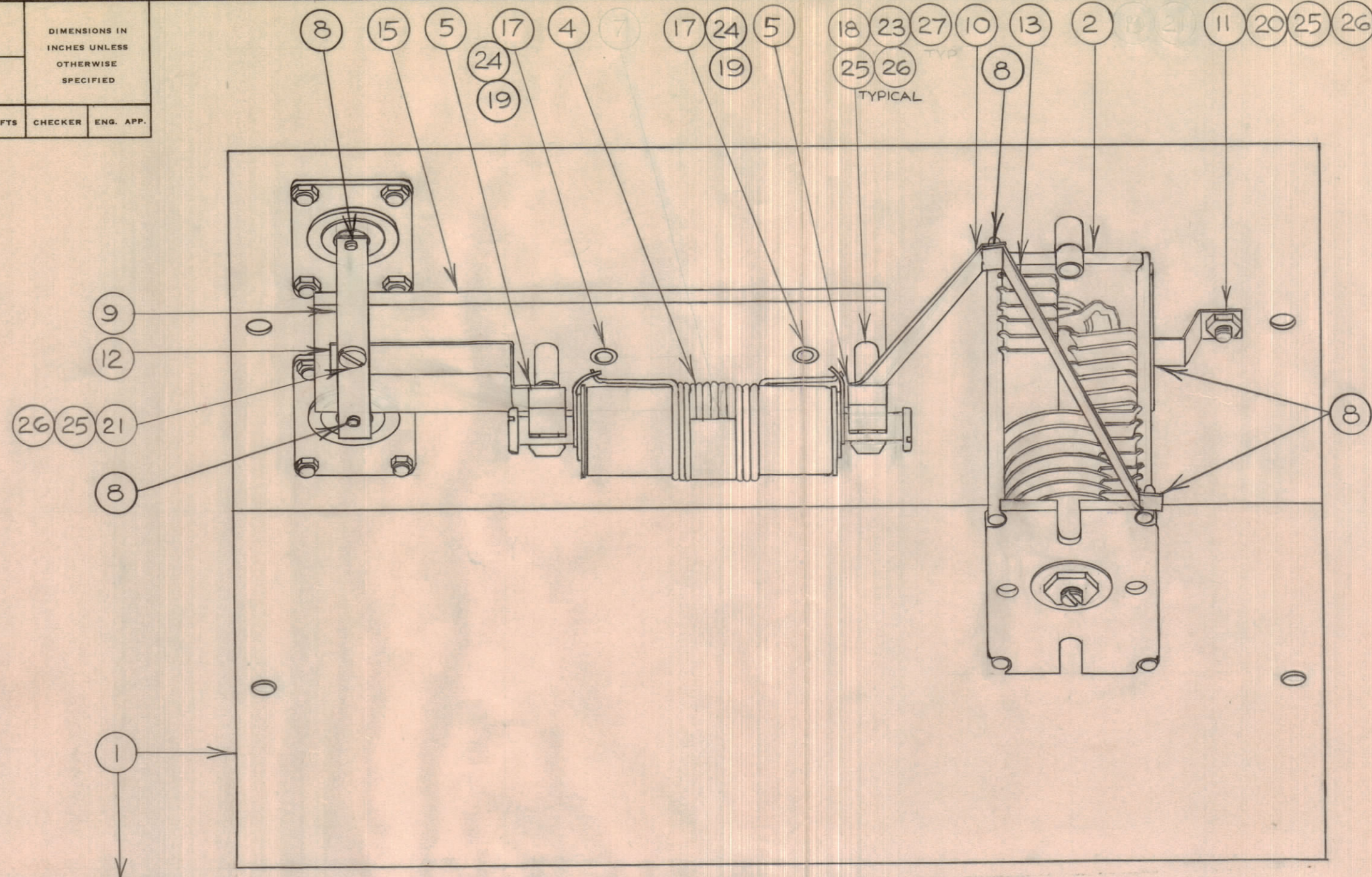
SHT. 1 OF 2

IF IT IS FOUND DESIRABLE TO CHANGE ANY TOLERANCE OR OTHER DETAIL SPECIFIED ON THIS DRAWING NOTIFY THE PURCHASER PROMPTLY.

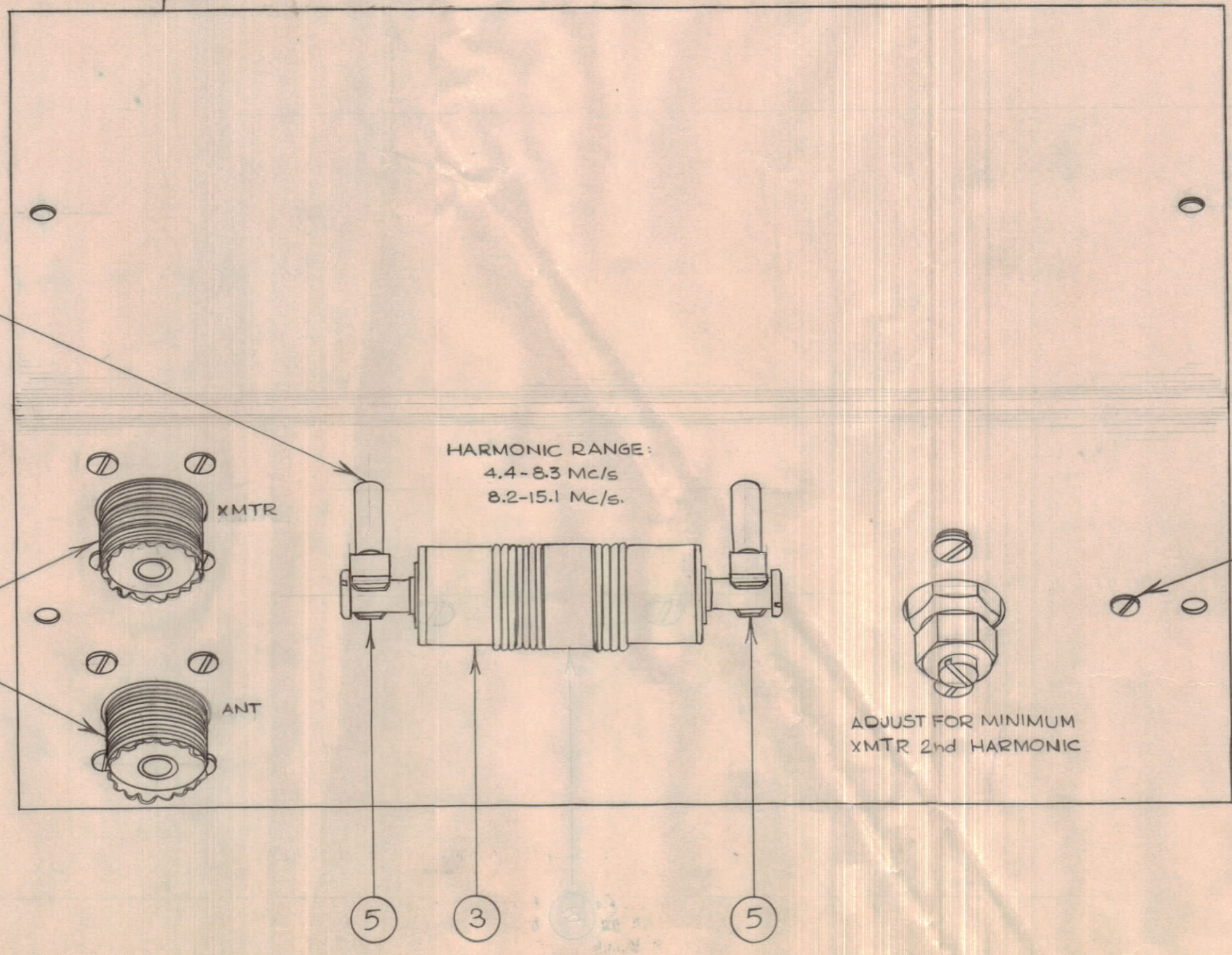
MAXIMUM ALLOWABLE TOLERANCES HAVE BEEN DETERMINED AND DEVIATIONS WILL BE CAUSE FOR REJECTION. REMOVE ALL BURRS AND SHARP EDGES.

DIMENSIONS IN INCHES UNLESS OTHERWISE SPECIFIED

ISSUE	ITEM	CHANGED FROM	DATE	CN. NO.	DRAFTS	CHECKER	ENG. APP.



REQ.	ITEM	PART NO.	DESCRIPTION	SYMBOL
1	1	LD-10161	Chassis	
1	2	CB-103-2	Capacitor, variable	
1	3	CL-10024-1	Coil, Band 1	
1	4	CL-10024-2	Coil, Band 2	
4	5	FC-102-1-XX-C	Clip, coil	
	6			
	7			
-	8	BS-100	Solder	
1	9	FP-10009-1	Connecting Strap	
1	10	FP-10009-2	Connecting Strap	
1	11	FP-10009-3	Connecting Strap	
1	12	FP-10009-4	Connecting Strap	
1	13	FP-10009-5	Connecting Strap	
2	14	SO-239/TEF	Connector	
1	15	PP-10084	Coil Board	
	16			
2	17	TE-108-13	Stand Off	
4	18	TE-117-33	Spacer	
4	19	LWS06MRN	Washer	
1	20	SCBS04LOBN4	Screw	
9	21	SCBS04LOBN5	Screw	
2	22	SCBS04LOBN10	Screw	
2	23	SCBS04LOBN12	Screw	
4	24	SCBS0632BN5	Screw	
14	25	NTH04LOBN8	Nut	
14	26	LWIO4MRN	Washer	
8	27	FWO4MRN	Washer	



A10323
SHT. 2 OF 2

NOTICE TO PERSONS RECEIVING THIS DRAWING

THE TECHNICAL MATERIEL CORPORATION claims proprietary right in the material disclosed hereon. This drawing is issued in confidence for engineering information only and may not be reproduced or used to manufacture anything shown hereon without permission from THE TECHNICAL MATERIEL CORPORATION to the user. This drawing is loaned for mutual assistance and is subject to recall at any time.

Property of:
THE TECHNICAL MATERIEL CORPORATION
MAMARONECK, NEW YORK

TOLERANCES		SCALE:
ALL OTHERS	DEC. DIM. ± FRAC. DIM. ± ANGULAR DIM. ±	DRILL, PUNCH, COMMERCIAL STOCK SIZES AND MANUFACTURERS TOLERANCES ARE NOT INCLUDED.

AFU-1	E1143 P		JUNE 13/61
MODEL	PROJECT NO.	ASS'Y. NO.	DATE
USED ON			

STOCK SIZE		TMC (Canada) LIMITED OTTAWA ONTARIO	
MATERIAL		CHASSIS ASS'Y	
WEIGHT PER PC.		ANTENNA FILTER UNIT	
TYPE & TEMPER		JPC	R.W. Thomas
HEAT TREAT. SPEC.		DRAWN	ELEC. DES. APP.
FINISH & SPEC. NO.		CHECKED	MECH. DES. APP.
		FINAL APPROVAL	
		A10323	