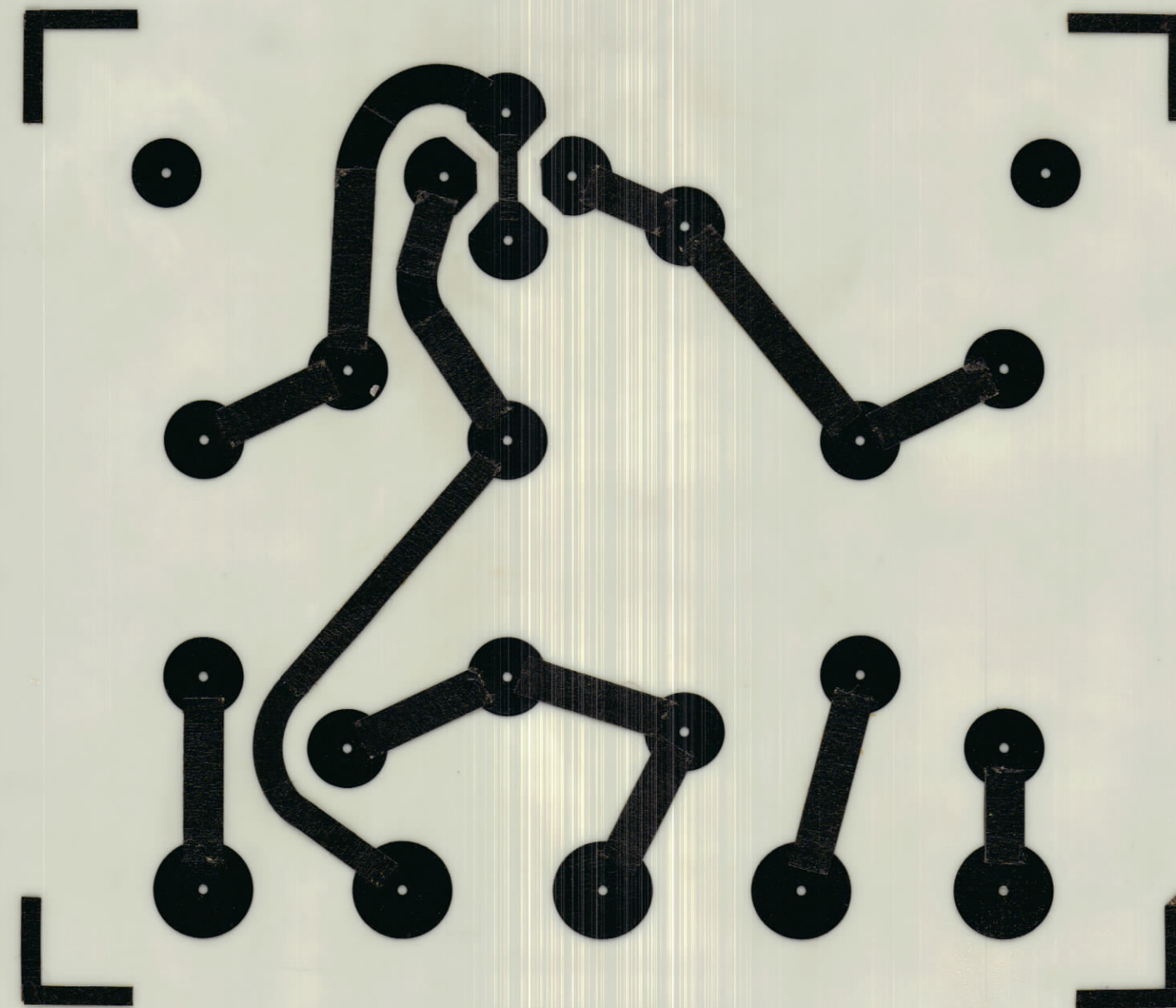
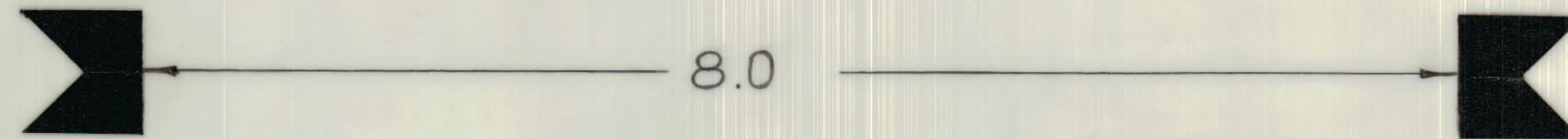


REVISIONS					
ZONE	SYM	DESCRIPTION	DATE	E.M.N. NO.	APPD
	A	REDRAWN	12 JAN 66	RA	<i>[Signature]</i>



SCALE 4:1

NEGATIVE 1:1

FOIL SIDE

SEE SHEET 2 FOR MACHINING
PLATING WILL BE TIN LEAD

TTR-10	005/67	A10537-	14 NOV 66	TMC (Canada) LIMITED OTTAWA ONTARIO	
MODEL	PROJECT NO.	ASS'Y. NO.	DATE	CW KEYING BOARD	
USED ON				(ETCHING)	
MAXIMUM ALLOWABLE TOLERANCES HAVE BEEN DETERMINED AND DEVIATIONS WILL BE CAUSE FOR REJECTION. REMOVE ALL BURRS AND SHARP EDGES		IF IT IS FOUND DESIRABLE TO CHANGE ANY TOLERANCE OR OTHER DETAIL SPECIFIED ON THIS DRAWING NOTIFY THE PURCHASER PROMPTLY.		RA	
TOLERANCES		SCALE		DRAWN	ELEC. DES. APP. MECH. DES. APP.
ALL OTHERS	DEC. DIM. ± FRAC. DIM. ± ANGULAR DIM. ±	DIMENSIONS IN INCHES UNLESS OTHERWISE SPECIFIED DRILL, PUNCH, COMMERCIAL STOCK SIZES AND MANUFACTURERS TOLERANCES ARE NOT INCLUDED.		CHECKED	FINAL APPROVAL
				SHEET 1 OF 5 A10537-1 A	

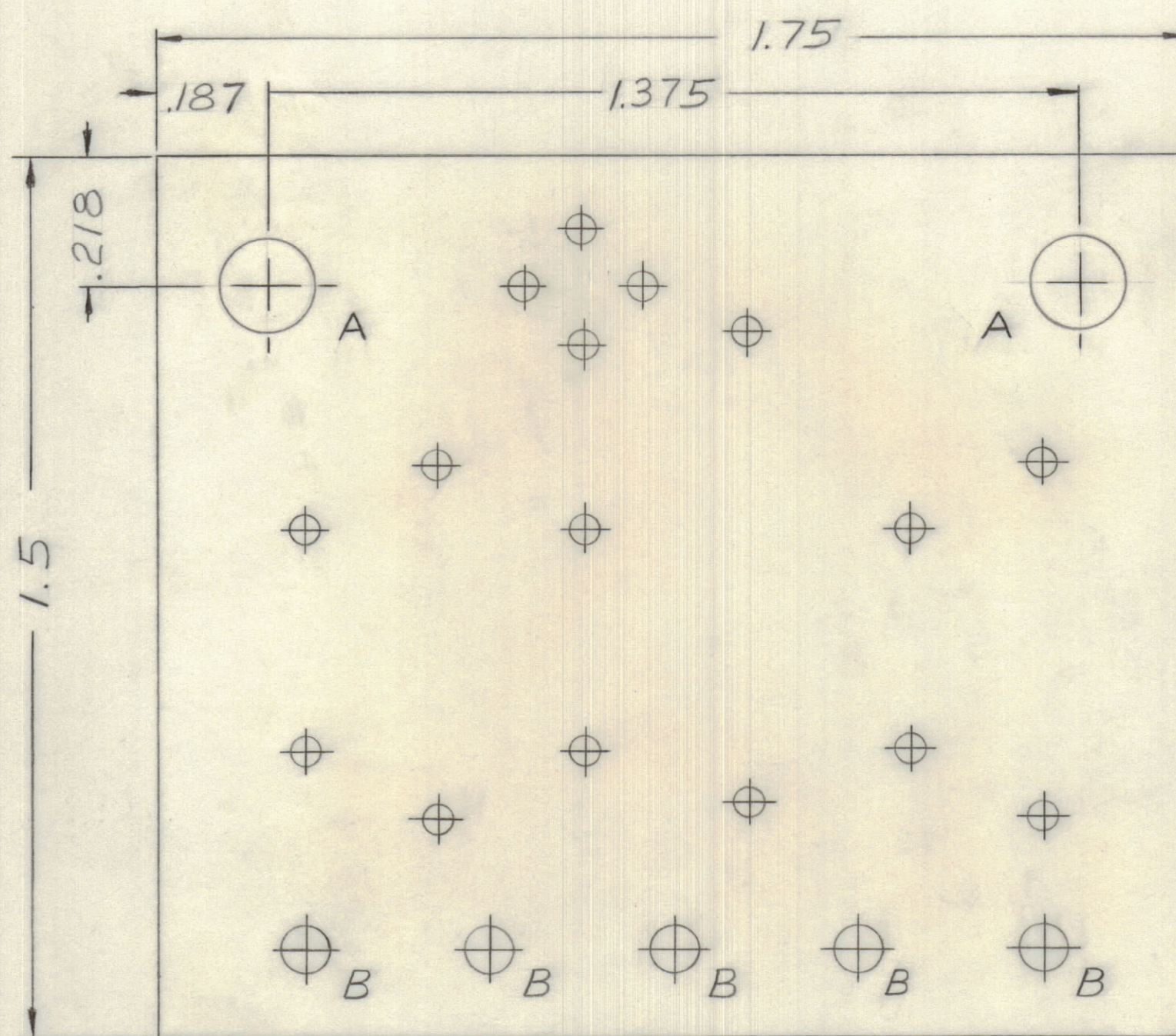
IF IT IS FOUND DESIRABLE TO CHANGE ANY TOLERANCE OR OTHER DETAIL SPECIFIED ON THIS DRAWING NOTIFY THE PURCHASER PROMPTLY.

DIMENSIONS IN INCHES UNLESS OTHERWISE SPECIFIED

MAXIMUM ALLOWABLE TOLERANCES HAVE BEEN DETERMINED AND DEVIATIONS WILL BE CAUSE FOR REJECTION. REMOVE ALL BURRS AND SHARP EDGES.

ISSUE	ITEM	CHANGED FROM	DATE	CN. NO.	DRAFTS	CHECKER	ENG. APP.
A		REDRAWN	12 JAN 66		RA		

REQ.	ITEM	PART NO.	DESCRIPTION	SYMBOL
------	------	----------	-------------	--------



A10537-2 A

SCALE 4:1

NEGATIVE 1:1

HOLES	DESCRIPTION	REQ
A	5/32 DIA.	2
B	5/64 DIA.	5
UNMARKED	.046 DIA.	16

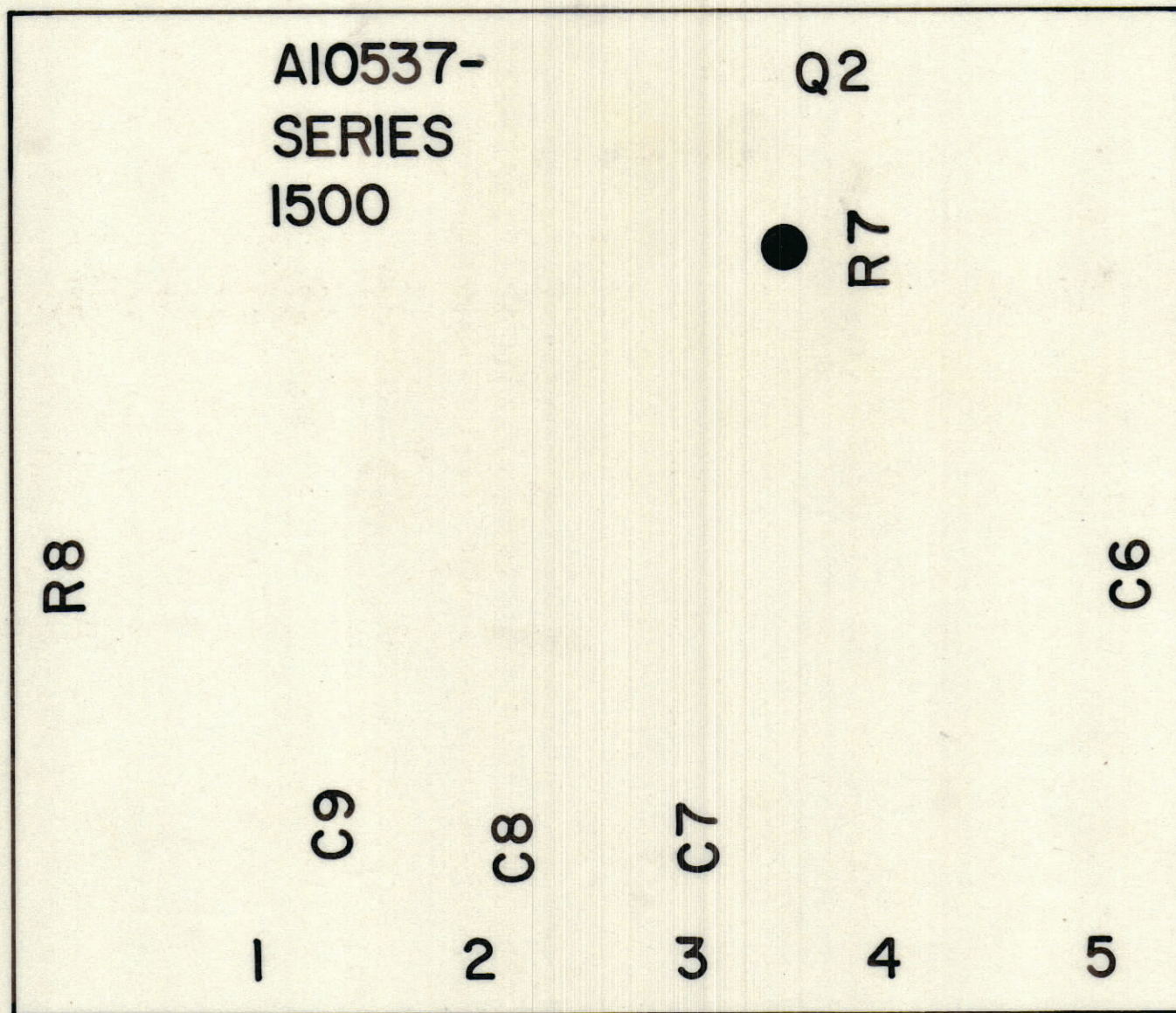
1/16 THK		TMC (Canada) LIMITED	
STOCK SIZE		OTTAWA ONTARIO	
EPOXY RESIN	20Z.CO.	CW KEYING BOARD	
MATERIAL	WEIGHT PER PC.	(MACHINING)	
FLGE062C2		RA	
TYPE & TEMPER		DRAWN	ELEC. DES. APP.
			MECH. DES. APP.
HEAT TREAT. SPEC.		CHECKED	FINAL APPROVAL
FINISH & SPEC. NO.		SHEET 2 OF 5 A10537-2 A	

TOLERANCES		SCALE:
ALL OTHERS	DEC. DIM. ± .X ± .05	DRILL, PUNCH, COMMERCIAL STOCK
	FRAC. DIM. ± 1/64, XX ± .01	SIZES AND MANUFACTURERS
	ANGULAR DIM. ± 0°30', XXX ± .005	TOLERANCES ARE NOT INCLUDED.

TTR 10	005/67	A10537-3	11 NOV 66
MODEL	PROJECT NO.	ASS'Y. NO.	DATE
USED ON			

IF IT IS FOUND DESIRABLE TO CHANGE ANY TOLERANCE OR OTHER DETAIL SPECIFIED ON THIS DRAWING NOTIFY THE PURCHASER PROMPTLY.							DIMENSIONS IN INCHES UNLESS OTHERWISE SPECIFIED	
MAXIMUM ALLOWABLE TOLERANCES HAVE BEEN DETERMINED AND DEVIATIONS WILL BE CAUSE FOR REJECTION. REMOVE ALL BURNS AND SHARP EDGES.								
ISSUE	ITEM	CHANGED FROM	DATE	CN. NO.	DRAFTS	CHECKER	ENG. APP.	
A		REDRAWN	12 JAN 66		RA			

REQ.	ITEM	PART NO.	DESCRIPTION	SYMBOL
------	------	----------	-------------	--------



A10537-3 A

NOTES
 1-WHITE EPOXY PAINT
 2-HEIGHT OF LETTERS .062 \pm .015
 3-WIDTH OF LINES .010 \pm .010
 4-AS PER TMC'S SPEC. 5735

TOLERANCES		SCALE: 4:1
ALL OTHERS	DEC. DIM. \pm FRAC. DIM. \pm ANGULAR DIM. \pm	DRILL, PUNCH, COMMERCIAL STOCK SIZES AND MANUFACTURERS TOLERANCES ARE NOT INCLUDED.

TTR-10	005/67	A10537-4	14 NOV 66
MODEL	PROJECT NO.	ASS'Y. NO.	DATE

STOCK SIZE		TMC (Canada) LIMITED OTTAWA ONTARIO	
MATERIAL		CW KEYING BOARD (LETTERING)	
WEIGHT PER PC.		RA	
TYPE & TEMPER		DRAWN	MECH. DES. APP.
HEAT TREAT. SPEC.		CHECKED	FINAL APPROVAL
FINISH & SPEC. NO.		SHEET 3 OF 5 A10537-3 A	

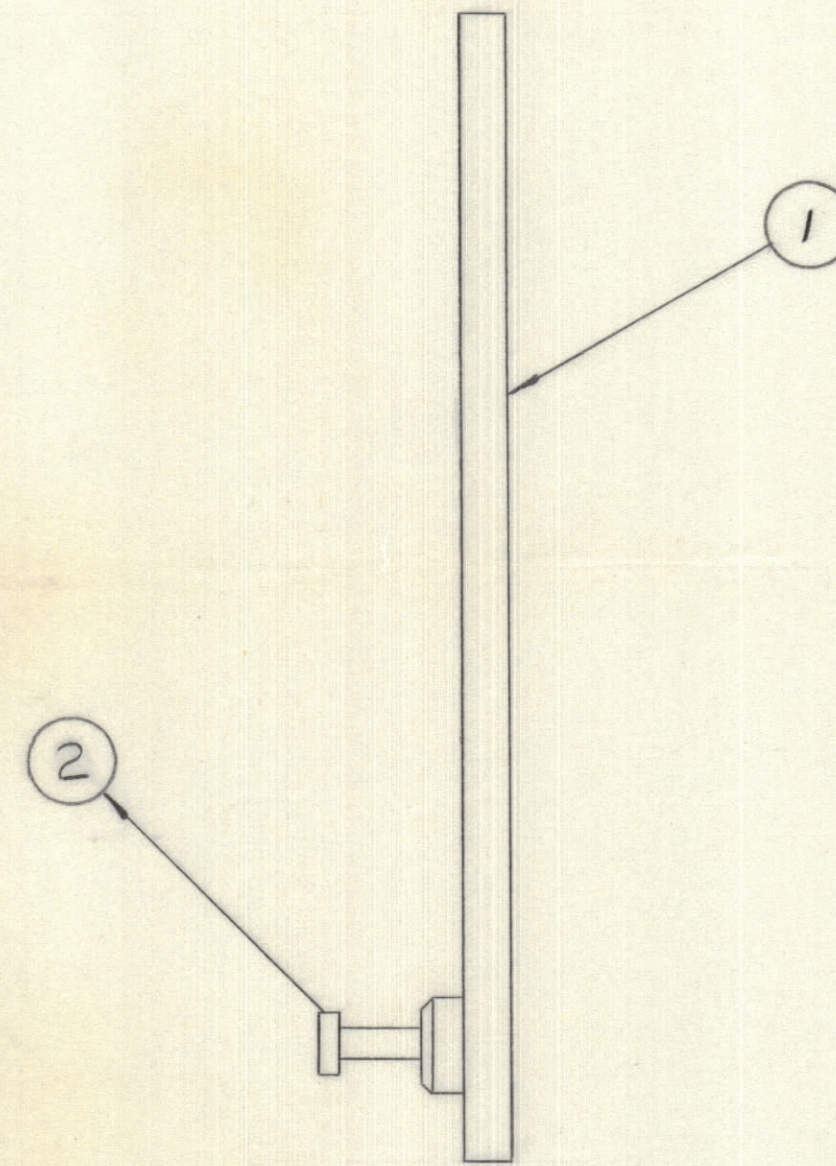
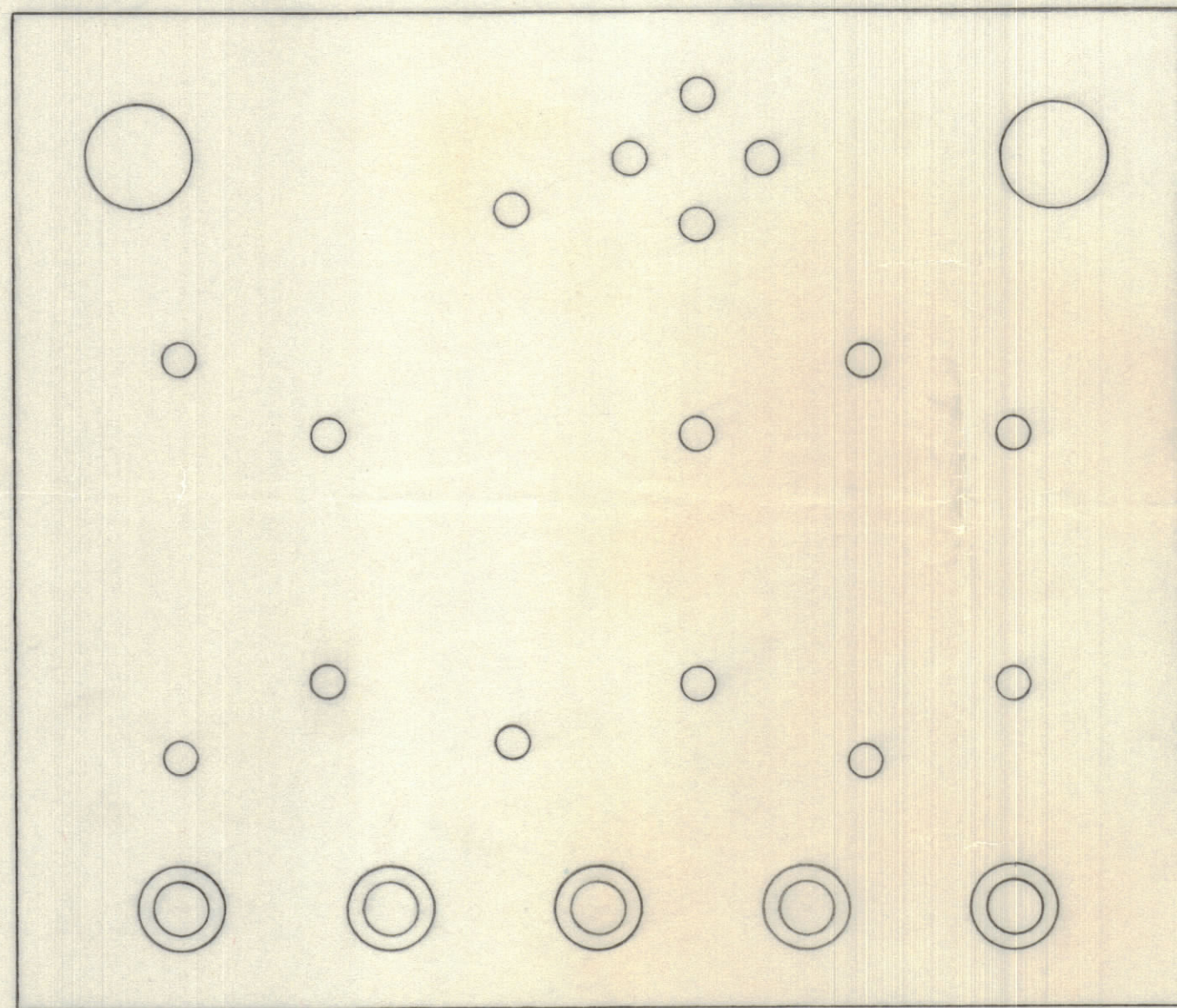
IF IT IS FOUND DESIRABLE TO CHANGE ANY TOLERANCE OR OTHER DETAIL SPECIFIED ON THIS DRAWING NOTIFY THE PURCHASER PROMPTLY.

MAXIMUM ALLOWABLE TOLERANCES HAVE BEEN DETERMINED AND DEVIATIONS WILL BE CAUSE FOR REJECTION. REMOVE ALL BURRS AND SHARP EDGES.

DIMENSIONS IN INCHES UNLESS OTHERWISE SPECIFIED

ISSUE	ITEM	CHANGED FROM	DATE	CN. NO.	DRAFTS	CHECKER	ENG. APP.
A		REDRAWN	12/1/66		RA		

REQ.	ITEM	PART NO.	DESCRIPTION	SYMBOL
1	1	A10537-3	CW KEYING BOARD	
5	2	TE127-2	TERMINAL, STUD	



A10537-4 A

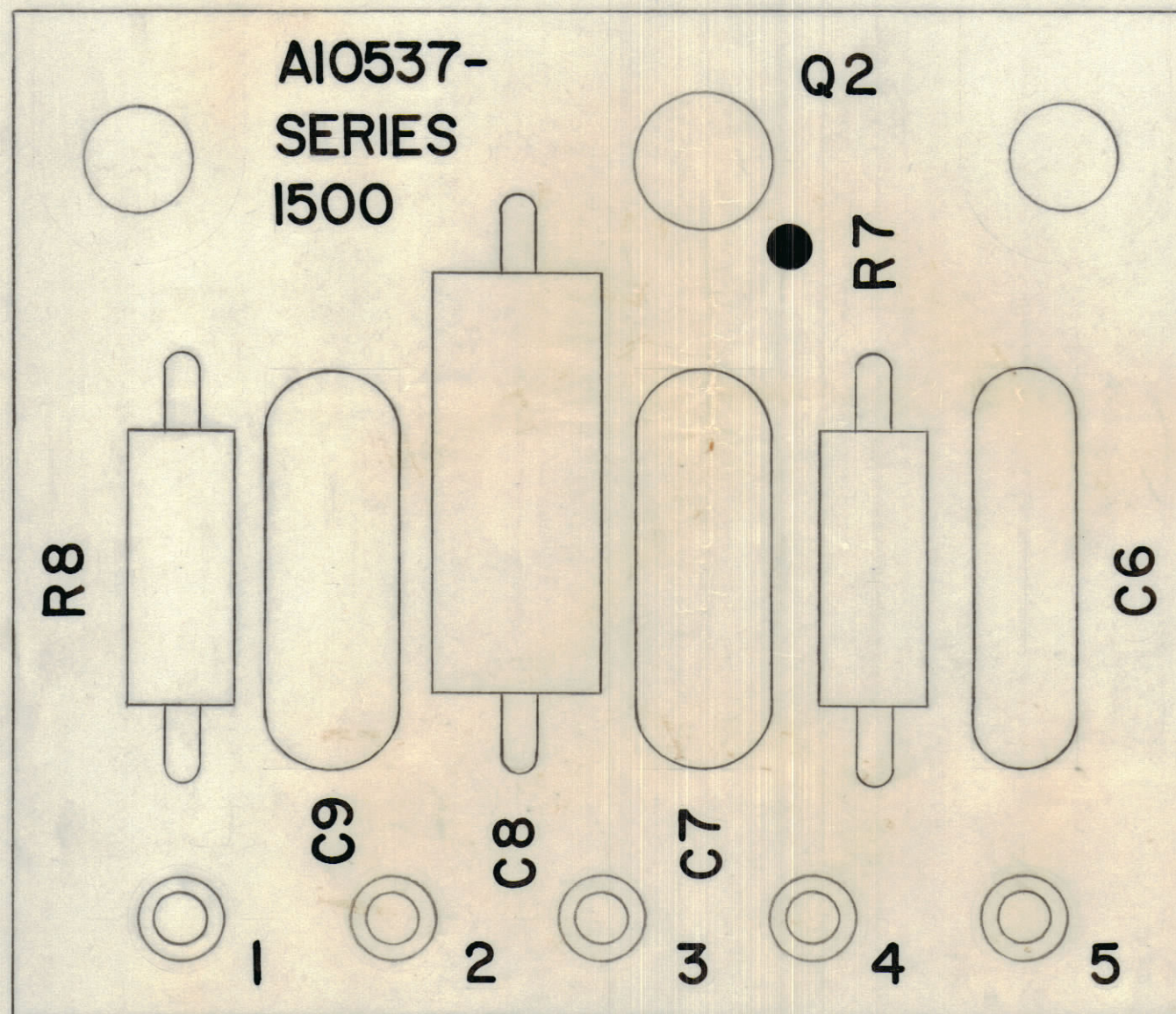
TOLERANCES		SCALE: 4:1
ALL OTHERS	DEC. DIM. ± FRAC. DIM. ± ANGULAR DIM. ±	DRILL, PUNCH, COMMERCIAL STOCK SIZES AND MANUFACTURERS TOLERANCES ARE NOT INCLUDED.

TTR-10	005/67	A10537-5	15 NOV 66
MODEL	PROJECT NO.	ASS'Y. NO.	DATE

STOCK SIZE		TMC (Canada) LIMITED OTTAWA ONTARIO	
MATERIAL		CW KEYING BOARD (SUB ASSEMBLY)	
WEIGHT PER PC.		RA	
TYPE & TEMPER.		DRAWN	ELEC. DES. APP. MECH. DES. APP.
HEAT TREAT. SPEC.		 CHECKED FINAL APPROVAL	
FINISH & SPEC. NO.		SHEET 4 OF 5 A10537-4 A	

IF IT IS FOUND DESIRABLE TO CHANGE ANY TOLERANCE OR OTHER DETAIL SPECIFIED ON THIS DRAWING NOTIFY THE PURCHASER PROMPTLY.		DIMENSIONS IN INCHES UNLESS OTHERWISE SPECIFIED					
MAXIMUM ALLOWABLE TOLERANCES HAVE BEEN DETERMINED AND DEVIATIONS WILL BE CAUSE FOR REJECTION. REMOVE ALL BURRS AND SHARP EDGES.							
ISSUE	ITEM	CHANGED FROM	DATE	CN. NO.	DRAFTS	CHECKER	ENG. APP.
A		REDRAWN	12 JAN 67		RA		<i>W</i>

REQ.	ITEM	PART NO.	DESCRIPTION	SYMBOL
1	1	A10537	CW KEYING BOARD	
1	2	3N125	TRANSISTOR	Q1502
1	3	CE105-2-15	ELECTROLYTIC CAPACITOR	C1548
1	4	CC100-16	CAPACITOR, FIXED, CERAMIC, DISC.	C1546
2	5	CC100-33	CAPACITOR, FIXED, CERAMIC, DISC.	C1549 C1547
1	6	RC20G104J	RESISTOR, FIXED, COMPOSITION	R1557
1	7	RC20G101J	RESISTOR, FIXED, COMPOSITION	R1558



A10537-5 A

TOLERANCES		SCALE: 4:1
ALL OTHERS	DEC. DIM. ± FRAC. DIM. ± ANGULAR DIM. ±	DRILL, PUNCH, COMMERCIAL STOCK SIZES AND MANUFACTURERS TOLERANCES ARE NOT INCLUDED.

TTR-10	005/67	A10537-	14 NOV 66
MODEL	PROJECT NO.	ASS'Y. NO.	DATE

STOCK SIZE		TMC (Canada) LIMITED OTTAWA ONTARIO	
MATERIAL		CW KEYING BOARD (FINAL ASSEMBLY)	
WEIGHT PER PC.			
TYPE & TEMPER		RA	
DRAWN		ELEC. DES. APP. <i>W</i>	
HEAT TREAT. SPEC.		MECH. DES. APP.	
CHECKED		FINAL APPROVAL	
FINISH & SPEC. NO.		SHEET 5 OF 5 A10537-5 A	