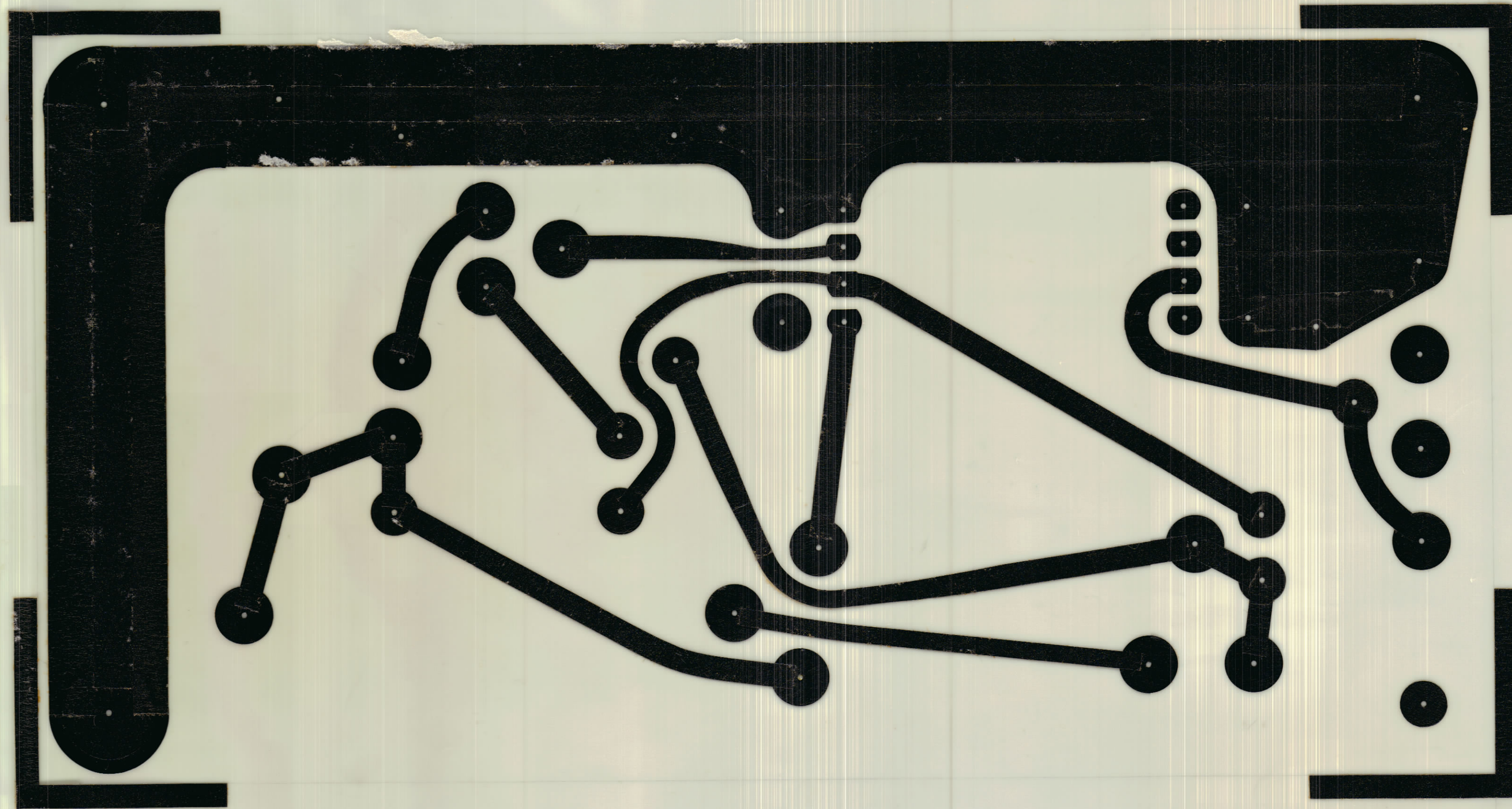
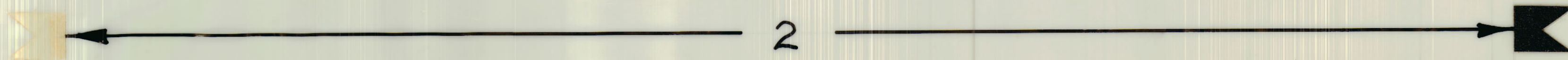


ISSUE	ITEM	CHANGED FROM	DATE	CN. NO.	DRAFTS	CHECKER	ENG. APP.
X3		ENGINEERING RELEASE	NOV 1/68		AP		

SCALE 4:1

NEGATIVE 1:1

BOTTOM PATTERN



REF. A10742-2 FOR PLATING NOTES

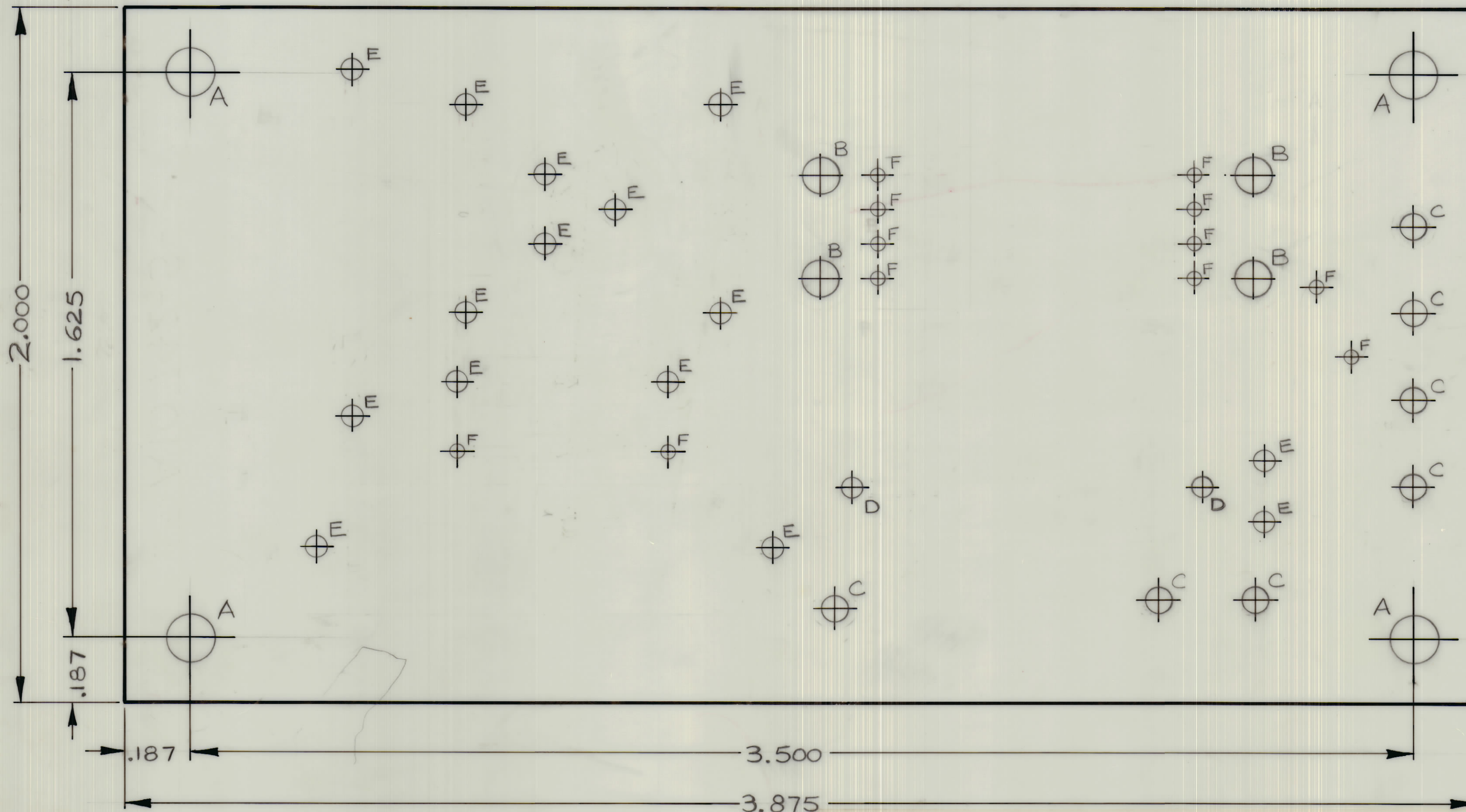
AMC	074/69		OCT 15/68	TMC (Canada) LIMITED OTTAWA ONTARIO		
MODEL	PROJECT NO.	ASSY. NO.	DATE	STOCK SIZE	P.C. ASS'Y, REGULATOR	
USED ON				MATERIAL	WEIGHT PER PC.	
MAXIMUM ALLOWABLE TOLERANCES HAVE BEEN DETERMINED AND DEVIATIONS WILL BE CAUSE FOR REJECTION. REMOVE ALL BURRS AND SHARP EDGES.			IF IT IS FOUND DESIRABLE TO CHANGE ANY TOLERANCE OR OTHER DETAIL SPECIFIED ON THIS DRAWING NOTIFY THE PURCHASER PROMPTLY.			
TOLERANCES			SCALE			
ALL OTHERS	DEC. DIM. ± UNLESS OTHERWISE SPECIFIED ±.015		DIMENSIONS IN INCHES UNLESS OTHERWISE SPECIFIED			
	ANGULAR DIM. ±		DRILL PUNCH, COMMERCIAL STOCK SIZES AND MANUFACTURERS TOLERANCES ARE NOT INCLUDED.			
				HEAT TREAT. SPEC.	FINISH & SPEC. NO.	
				CHECKED	FINAL APPROVAL	
				SHEET 1 OF 6 A10742-1 X3		

ISSUE	ITEM	CHANGED FROM	DATE	CN. NO.	DRAFTS	CHECKER	ENG. APP.

**NOTES:**

- (1) PLASTIC SHEET, LAMINATED, COPPER CLAD.  
FL-GE 062-C-2/0 PER MIL-P-13949
- (2) PLATED WITH A MINIMUM OF .0003 INCH OF  
TIN LEAD
- (3) THIS BOARD SHALL MEET THE REQUIREMENTS  
OF TMC SPEC. 735

SCALE 4:1



HOLE	DESCRIPTION	REQ'D
A	.140 DIA.	4
B	.109 DIA.	4
C	.081 DIA.	6
D	.059 DIA.	2
E	.052 DIA.	15
F	.039 DIA.	12

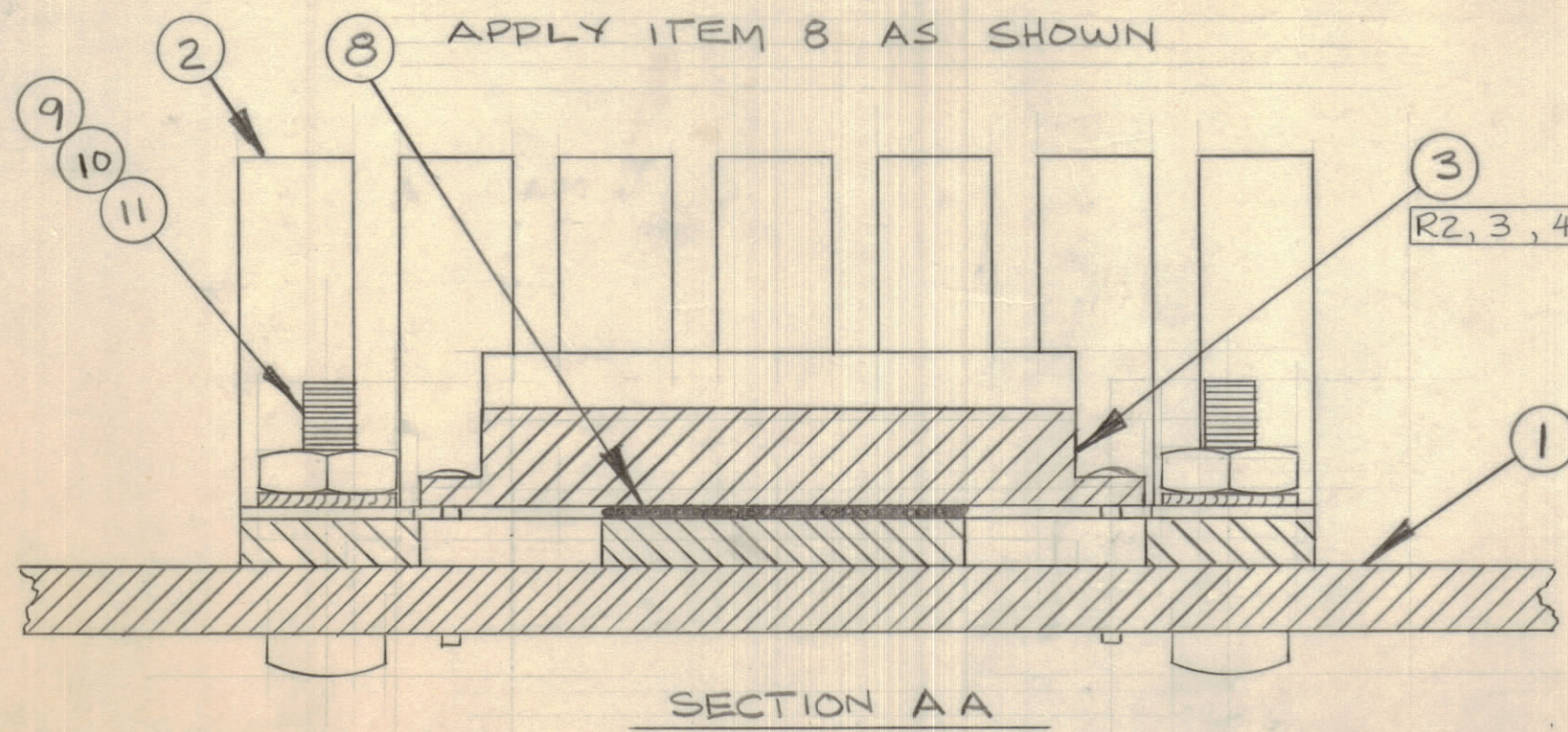
AMC	074/69		OCT. 15/68	TMC (Canada) LIMITED OTTAWA ONTARIO		
MODEL	PROJECT NO.	ASS'Y. NO.	DATE			R.C. ASS'Y, REGULATOR
USED ON				STOCK SIZE		
MAXIMUM ALLOWABLE TOLERANCES HAVE BEEN DETERMINED AND DEVIATIONS WILL BE CAUSE FOR REJECTION. REMOVE ALL BURRS AND SHARP EDGES				MATERIAL		WEIGHT PER PC.
				TYPE & TEMPER		
TOLERANCES				HEAT TREAT. SPEC.		
				SCALE		
ALL OTHERS				FINISH & SPEC. NO.		
				DIMENSIONS IN INCHES UNLESS OTHERWISE SPECIFIED		
DRILL PUNCH, COMMERCIAL STOCK SIZES AND MANUFACTURERS TOLERANCES ARE NOT INCLUDED.				CHECKED		FINAL APPROVAL
				SHEET 2 OF 6		A10742-2

IF IT IS FOUND DESIRABLE TO CHANGE ANY TOLERANCE OR OTHER DETAIL SPECIFIED ON THIS DRAWING NOTIFY THE PURCHASER PROMPTLY.

MAXIMUM ALLOWABLE TOLERANCES HAVE BEEN DETERMINED AND DEVIATIONS WILL BE CAUSE FOR REJECTION. REMOVE ALL BURRS AND SHARP EDGES.

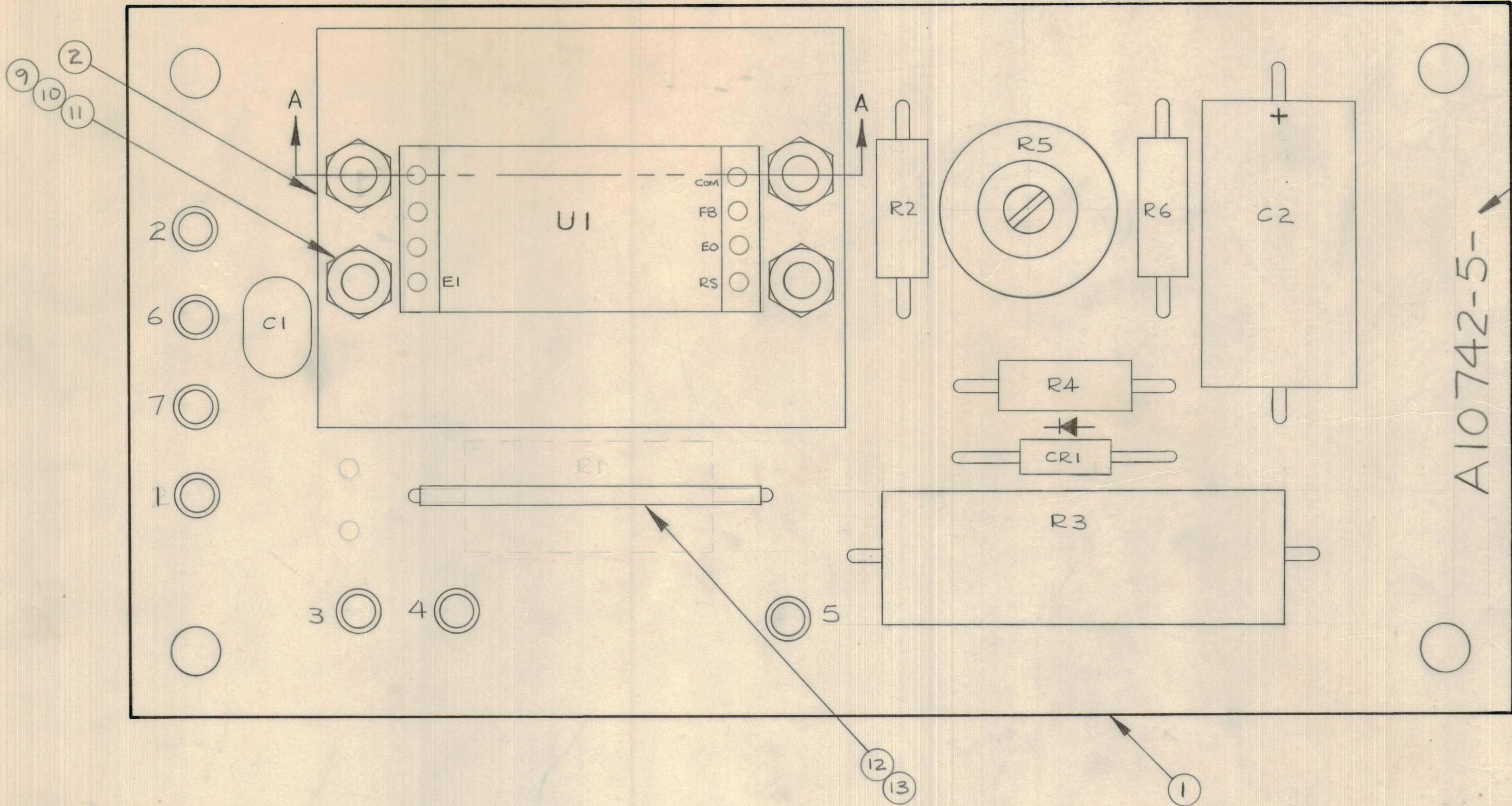
DIMENSIONS IN INCHES UNLESS OTHERWISE SPECIFIED

ISSUE	ITEM	CHANGED FROM	DATE	CN. NO.	DRAFTS	CHECKER	ENG. APP.



REQ.	ITEM	PART NO.	DESCRIPTION	SYMBOL
1	1	A10742-4	P.C. ASS'Y. REGULATOR	
1	2	HD10006	HEAT SINK	
1	3		I.C. REGULATOR	U1
1	4		RESISTOR, VARIABLE	R5
4	5		RESISTOR, FIXED	
2	6		CAPACITOR, FIXED	C1, C2
1	7		DIODE	CR1
AR	8	GL138	COMPOUND, SILICONE	
4	9	LWE02MSS	WASHER, LOCK EXTERNAL	
4	10	NTH0256SS6	NUT, HEX.	
4	11	SCP0256SS4	SCREW, MACHINE	
AR	12	PX104-4-034	SLEEVING, INSULATED	
AR	13	WL100-6	WIRE, BUSS	
AR	14	BS100	SOLDER, SOFT	

NOTE: FOR PART NO'S OF ELECTRICAL COMPONENTS REF. MATERIAL LIST



ADD LATEST REV. LETTER TMC PART NO.

A10742-5-

A10742-5 X3

SCALE 4:1

TOLERANCES		SCALE:
ALL OTHERS	DEC. DIM. ± 1/64 FRAC. DIM. ± 1/64 ANGULAR DIM. ± 0° 30'	.X = .05 .XX = .01 .XXX = .005 DRILL, PUNCH, COMMERCIAL STOCK SIZES AND MANUFACTURERS TOLERANCES ARE NOT INCLUDED.

AMC	074/69		OCT. 15/68
MODEL	PROJECT NO.	ASS'Y. NO.	DATE

STOCK SIZE		TMC (Canada) LIMITED OTTAWA ONTARIO		
MATERIAL		P.C. ASS'Y, REGULATOR		
TYPE & TEMPER		RPL	KaH	
HEAT TREAT. SPEC.		DRAWN	ELEC. DES. APP.	MECH. DES. APP.
FINISH & SPEC. NO.		CHECKED	FINAL APPROVAL	
SHEET 5 OF 6 A10742-5 X3				