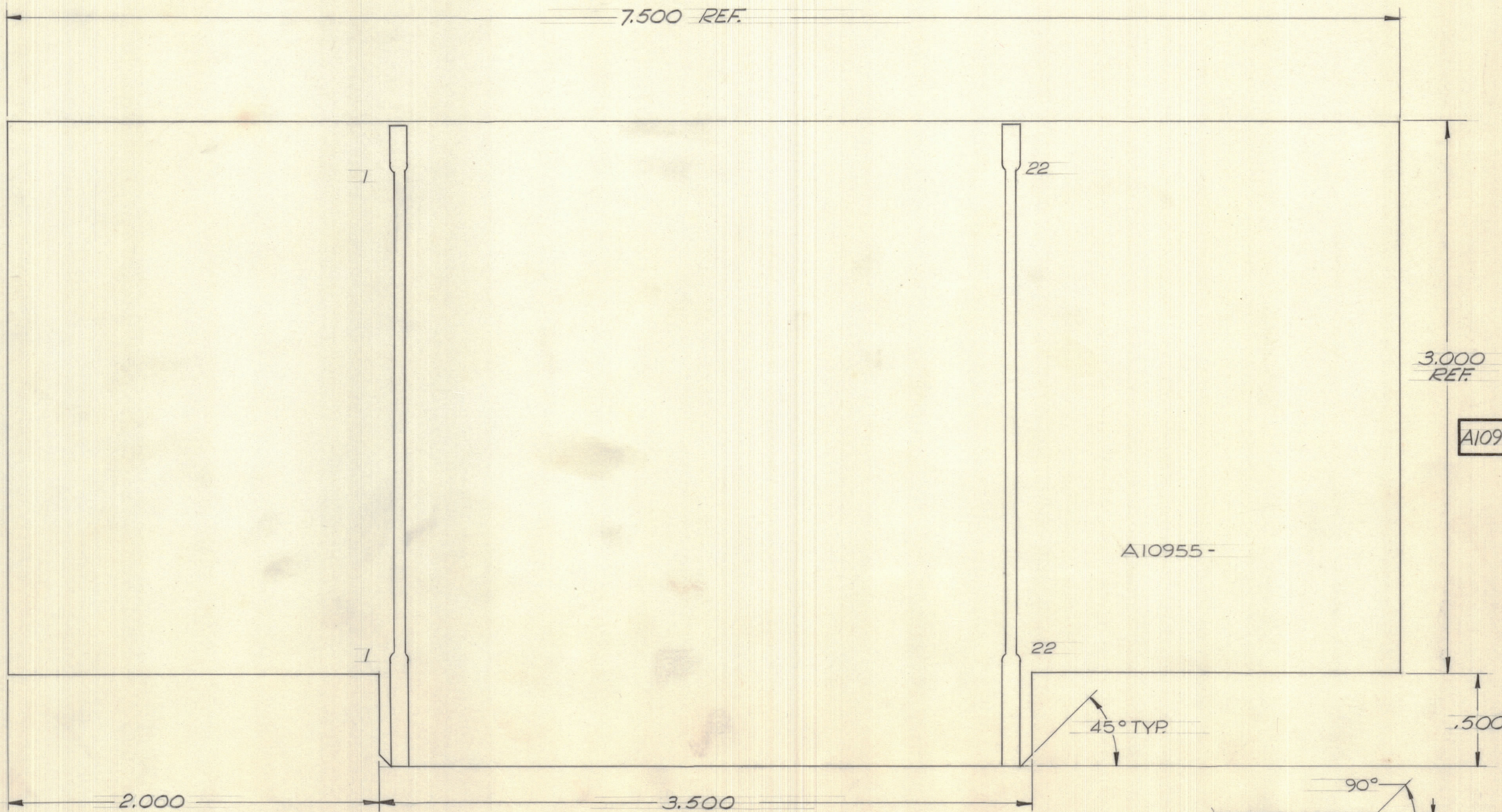


IF IT IS FOUND DESIRABLE TO CHANGE ANY TOLERANCE OR OTHER DETAIL SPECIFIED ON THIS DRAWING NOTIFY THE PURCHASER PROMPTLY.		DIMENSIONS IN INCHES UNLESS OTHERWISE SPECIFIED					
MAXIMUM ALLOWABLE TOLERANCES HAVE BEEN DETERMINED AND DEVIATIONS WILL BE CAUSE FOR REJECTION. REMOVE ALL BURRS AND SHARP EDGES.							
ISSUE	ITEM	CHANGED FROM	DATE	CN. NO.	DRAFTS	CHECKER	ENG. APP.
0		PROD. RELEASE	23-2 77			WAT.	

REQ.	ITEM	PART NO.	DESCRIPTION	SYMBOL
------	------	----------	-------------	--------



A10955-2 \emptyset

A10955-

- NOTES:
1. BOARD MUST BE IN ACCORDANCE WITH TMC SPEC 375
 2. MATERIAL = FL-GE-062-2/2
 3. TIN LEAD PLATE ALL OVER, 0.0003 THK MIU, EXCEPT CONTACTS
CONTACTS: GOLD PLATE 0.0001 THK MIU., OVER 0.0003 THK MIU. LOW STRESS NICKEL

STOCK SIZE		TMC (Canada) LIMITED OTTAWA ONTARIO	
MATERIAL		22 PII/ PC EXTENDER CARD	
WEIGHT PER PC.		MACHINING DETAIL	
TYPE & TEMPER		THOMAS	
DRAWN		A. PROCTOR	
HEAT TREAT. SPEC.		CHECKED	FINAL APPROVAL
FINISH & SPEC. NO.		SHT 3 OF 4	A10955-2 \emptyset

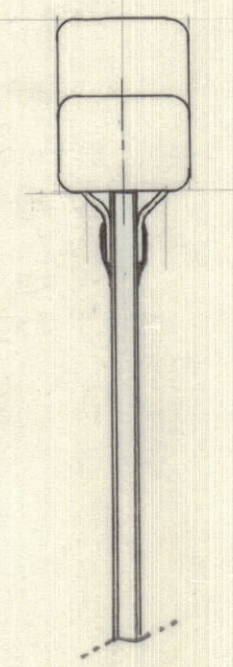
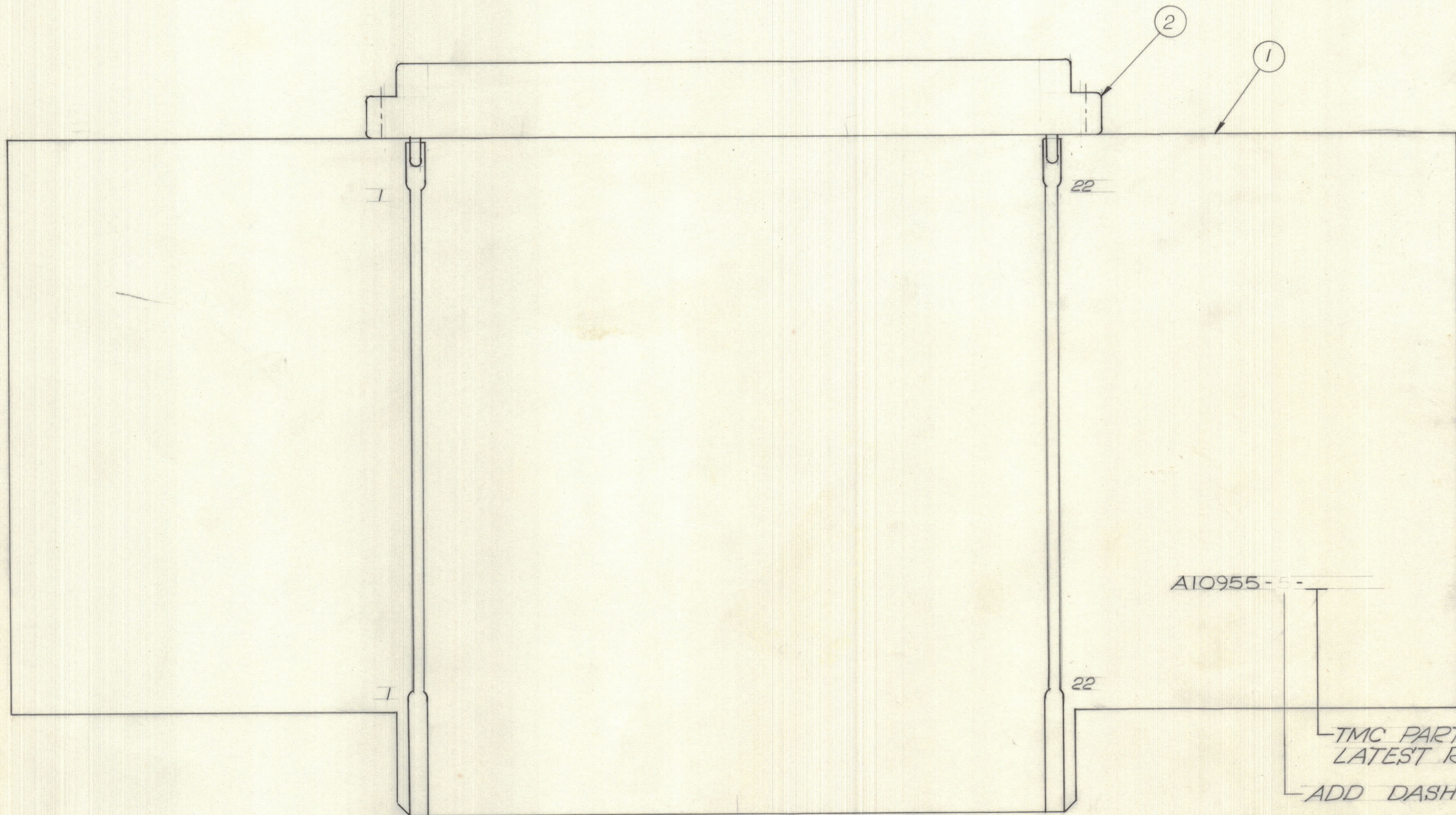
TOLERANCES		SCALE: 2/1
ALL DEC. DIM. \pm .XX	.XX = .05	DRILL, PUNCH, COMMERCIAL STOCK
OTHERS FRAC. DIM. \pm 1/64	.XX = .01	SIZES AND MANUFACTURERS
ANGULAR DIM. \pm 0° 30'	.XXX = .005	TOLERANCES ARE NOT INCLUDED.

SME-5	107-71	A10955-5	FEB 24/71
MODEL	PROJECT NO.	ASSY. NO.	DATE
USED ON			

IF IT IS FOUND DESIRABLE TO CHANGE ANY TOLERANCE OR OTHER DETAIL SPECIFIED ON THIS DRAWING NOTIFY THE PURCHASER PROMPTLY.		DIMENSIONS IN INCHES UNLESS OTHERWISE SPECIFIED					
MAXIMUM ALLOWABLE TOLERANCES HAVE BEEN DETERMINED AND DEVIATIONS WILL BE CAUSE FOR REJECTION. REMOVE ALL BURRS AND SHARP EDGES.							
ISSUE	ITEM	CHANGED FROM	DATE	CN. NO.	DRAFTS	CHECKER	ENG. APP.
0		PROD. RELEASE	FEB 71		NAT.	GP	

REQ.	ITEM	PART NO.	DESCRIPTION	SYMBOL
1	1	A10955-2	P.C. BOARD MACH.	
1	2		CONNECTOR	

NOTE:
FOR PART NOS., SEE
NUMERICAL PARTS LISTING.



A10955-5 ∅

A10955-5-

TMC PART NO. WITH
LATEST REVISION LETTER
ADD DASH NO.

TOLERANCES		SCALE: 2/1
ALL	DEC. DIM. ± 1/64	DRILL, PUNCH, COMMERCIAL STOCK SIZES AND MANUFACTURERS TOLERANCES ARE NOT INCLUDED.
OTHERS	FRAC. DIM. ± 1/64	
	ANGULAR DIM. ± 0° 30'	

SME-5	107-71	A10955-5	FEB 24/71
MODEL	PROJECT NO.	ASSY. NO.	DATE

STOCK SIZE		TMC (Canada) LIMITED OTTAWA ONTARIO	
MATERIAL		22 PIN EXTENDER CARD ASSEMBLY	
WEIGHT PER PC.		THOMAS	
TYPE & TEMPER		DRAWN	ELEC. DES. APP.
HEAT TREAT. SPEC.		A. KROTOR	GP
FINISH & SPEC. NO.		CHECKED	FINAL APPROVAL
		SHT 4 OF 4	A10955-5 ∅