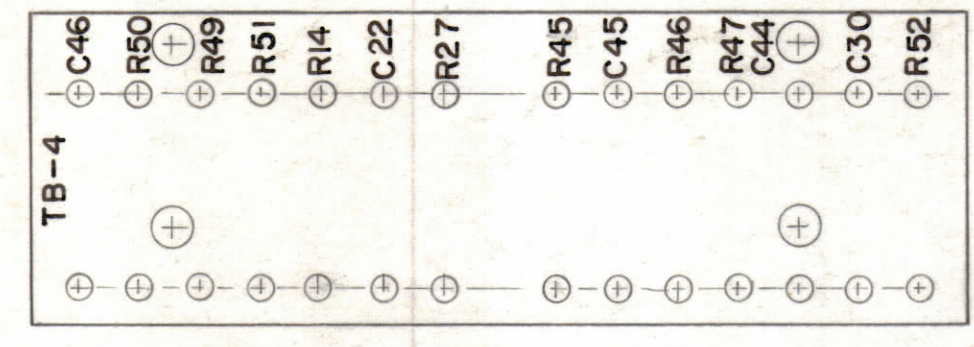
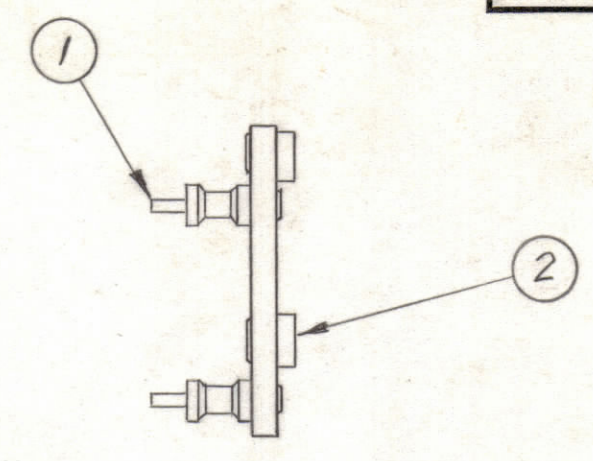


STAGE 1 - MACHINING (A-2122-1)
 MATERIAL - 1/8", XXXP, PHENOLIC, FINISH, NATURAL

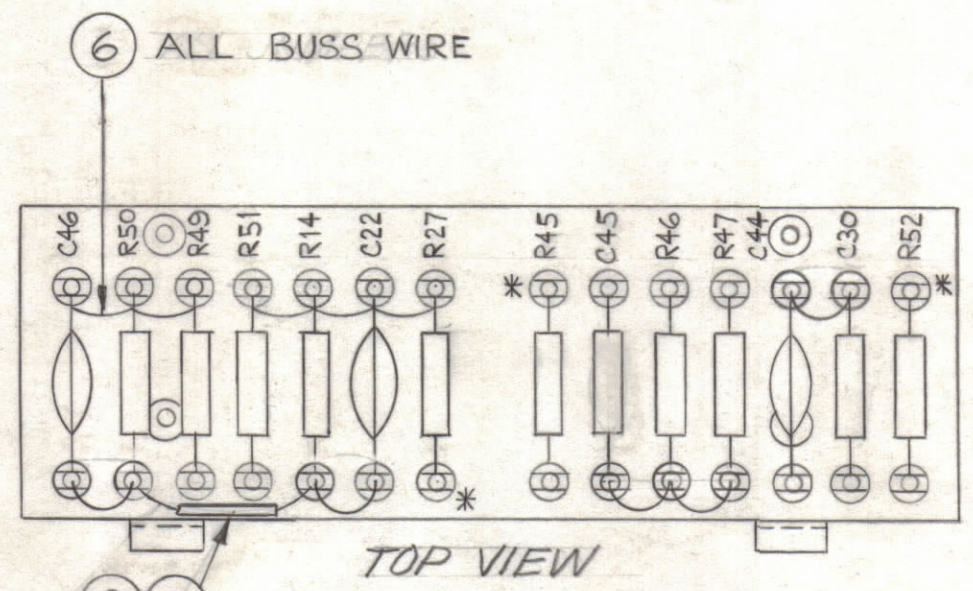


STAMPING TO BE 1/8 HIGH BLACK GOTHIC

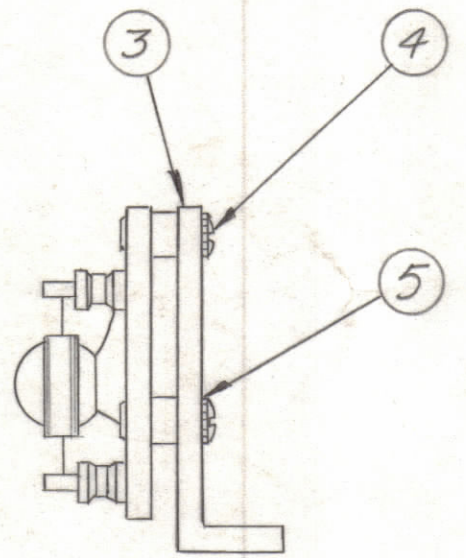
STAGE 2
 STAMPING (A-2122-2)



STAGE 3
 SUB-ASSEMBLY (A-2122-3)



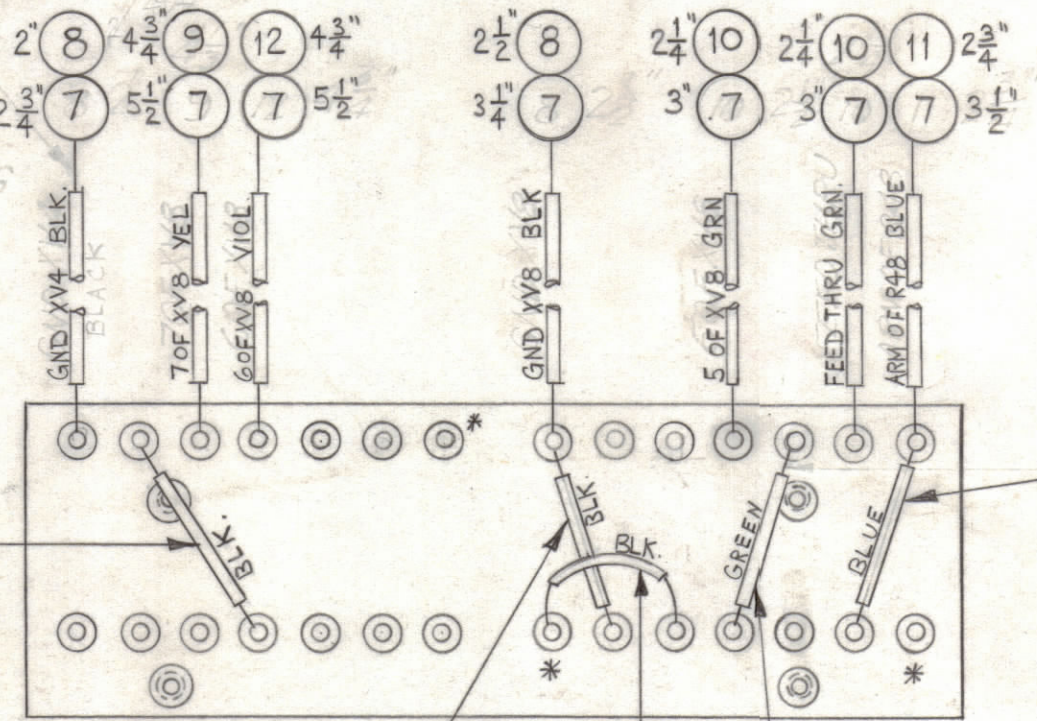
TOP VIEW



SLEEVING LENGTH (TYP)

NOTE: BRACKETS, ITEM 3, DELETED FROM THIS VIEW FOR WIRING CLARITY

* DO NOT SOLDER THIS END OF R45, R52, R27



REAR VIEW

ELECTRICAL ASSEMBLY (A-2122-4)

STAGE 4 - ELECTRICAL ASSEMBLY (A-2122-4)

THE CONTENTS OF THIS DRAWING ARE THE EXCLUSIVE PROPERTY OF THE TECHNICAL MATERIEL CORP. ITS UNAUTHORIZED USE OR REPRODUCTION IN WHOLE OR IN PART IS STRICTLY FORBIDDEN.

REQ. ITEM	PART NO.	DESCRIPTION	SYMBOL
1	27	RC20GF683K	RESISTOR, FIXED COMP. R14
1	26	CC-100-16	CAPACITOR, FIXED CERAMIC DISC. C22
1	25	RC20GF223K	RESISTOR, FIXED COMP. R27
X	24	BS-100	SOLDER, SOFT
1	23	RC20GF563K	RESISTOR, FIXED COMP. R52
1	22	RC20GF333K	R51
1	21	RC20GF102K	R50
1	20	RC20GF181K	R49
1	19	RC20GF823K	R47
1	18	RC20GF124K	R46
1	17	RC20GF474K	RESISTOR, FIXED, COMP. R45
1	16	CC-100-15	CAPACITOR, FIXED CERAMIC DISC. C46
1	15	CC21SL220J	CAPACITOR, FIXED CERAMIC C45
1	14	CC-100-9	CAPACITOR, FIXED CERAMIC DISC. C44
1	13	CC32CH101J	CAPACITOR, FIXED CERAMIC C30
X	12	PX-104-9-.034	INSULATION, SLEEVING (SIZE 20) VIOLET
X	11	-6	BLUE
X	10	-4	GREEN
X	9	-2	YELLOW
X	8	PX-104-1-.034	INSULATION, SLEEVING (SIZE 20) BLACK
X	7	WL-100-7	WIRE, BUSS (SIZE 22)
X	6	WL-100-8	WIRE, BUSS (SIZE 24)
4	5	LWE06MRN	LOCKWASHER, EXTERNAL
4	4	SCBS0632BN6	SCREW, MACHINE
2	3	MS-1321	BRACKET, ANGLE, TERM BD.
4	2	TE-108-3	STANDOFF, RIVET TYPE
28	11	TE-109-3	TERMINAL, LUG

NOTE: ALL LEAD WIRES 1/4" LONGER THAN SLEEVING

SYM	ZONE	DESCRIPTION	DATE	CH. NO.	DRAFTS	CHECKER	ENG. APP.
A	E56	JUMPERS ADDED BET. (C46 & R50)(C45, R46, R47)(C44 & C30)	10-20-61	5745	EE	RU	

UNLESS OTHERWISE SPECIFIED: SCALE DO NOT SCALE

DIMENSIONS ARE IN INCHES

TOLERANCES ON FRACTIONS ± 1/64 DECIMALS ± .005 ANGLES ± 1/2°

MAXIMUM ALLOWABLE TOLERANCES HAVE BEEN DETERMINED AND ANY DEVIATIONS WILL BE CAUSE FOR REJECTION. REMOVE ALL BURRS & SHARP EDGES

REQ. PER UNIT	MODEL	SECTION	ASS'Y. NO.	DATE
1	MSR-6B			8-14-61

REQ. ITEM	PART NO.	DESCRIPTION	SYMBOL
THE TECHNICAL MATERIEL CORP. MAMARONECK, NEW YORK			
TERMINAL BOARD #4 ASS'Y.			
DRAWN		CHECKED	
TYPE & TEMPER		HEAT TREAT. SPEC.	
FINISH & SPEC. NO.		ELEC. DES. APP. MECH. DES. APP.	
SHEET		OF	