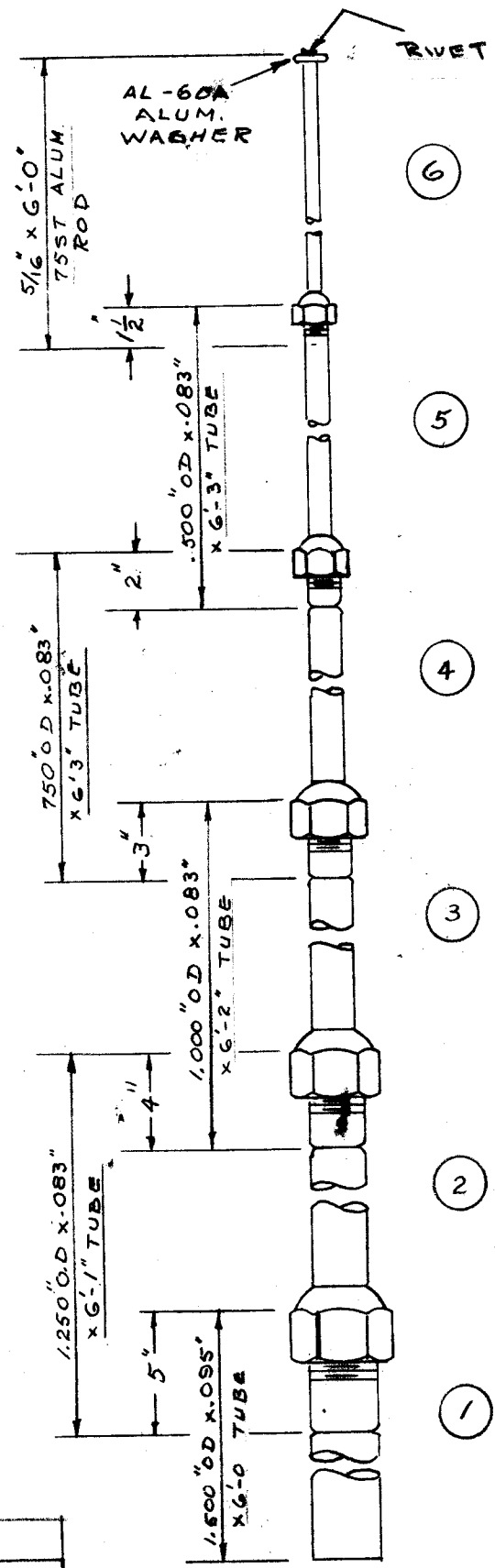
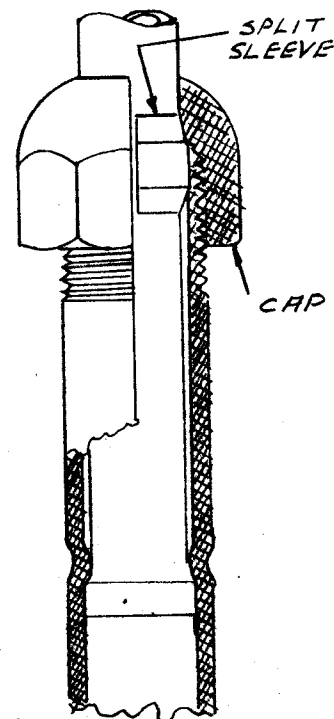


IF IT IS FOUND DESIRABLE TO CHANGE ANY TOLERANCE OR OTHER DETAIL SPECIFIED ON THIS DRAWING NOTIFY THE PURCHASER PROMPTLY.

MAXIMUM ALLOWABLE TOLERANCES HAVE BEEN DETERMINED AND DEVIATIONS WILL BE CAUSE FOR REJECTION. REMOVE ALL BURRS AND SHARP EDGES



AW-100-B

TMC NO.	AL. NO.	SECTION	LENGTH	TOTAL LENGTH
AW-100-1	AL-106	6	6'-0"	—
AW-100-2	AL-312	5-6	12'-1 1/2"	6'-4"
AW-100-3	AL-518	4-5-6	18'-2 1/2"	6'-4 1/2"
AW-100-4	AL-324	3-4-5-6	24'-1 1/2"	6'-4 1/2"
AW-100-5	AL-530	2-3-4-5-6	29'-10 1/2"	6'-5"
AW-100-6	AL-535	1-2-3-4-5-6	35'-5 1/2"	6'-5 1/2"

NOTE: THIS PRINT FOR REFERENCE ONLY - SEE AW100-D SIZE DRAWING SHEET 1 & 2

REF: PREMAX PRODUCTS DIV. CHISLM-RYDIE CO.

REQ. ITEM	PART NO.	DESCRIPTION	SYMBOL
SEAMLESS TUBING		THE TECHNICAL MATERIEL CORP. MAMARONECK, NEW YORK	
STOCK SIZE		ANTENNA, WHIP	
ALUMINUM			
MATERIAL	WEIGHT PER FC.		
G1ST			
TYPE & TEMPER			
HEAT TREAT. SPEC.			
FINISH & SPEC. NO.			

B	NOTE REPL. BY AW 109 DEL 6-18-92	GDL					
A	NOTE: REPLACED BY... ADD 6-29-90	GDL					
ISSUE	ITEM	CHANGED FROM	DATE	CN. NO.	DRAFTS	CHECKER	ENG. APP.
TOLERANCES			SCALE:				
ALL OTHERS	DEC. DIM. ± FRAC. DIM. ± ANGULAR DIM. ±	DRILL, PUNCH, COMMERCIAL STOCK SIZES AND MANUFACTURERS TOLERANCES ARE NOT INCLUDED.					

1	VRA-5,6,7		A-2169	2-11-63
1	VRA-2	259		7-26-54
1	VRA-1	259		7-26-54
REQ. PER UNIT	MODEL	PROJECT NO.	ASS'Y. NO.	DATE

MADE 7-26-54
DRAWN
ELEC. DES. APP.
MECH. DES.
CHECKED
FINAL APPROVAL
AW-100