

TMC NO.	MFG. NO.	NO. of SECTIONS	Extended Length	Collapsed Length	Base O.D.	Base I.D.	Weight lbs.	USED ON	
								MODEL	DATE
AW-101-1	55-1118	3	18'4"	6'3"	.750"	.680"	6	FOR USE WITH BASE INSULATOR CAT. NO.	
AW-101-2	55-1124	4	24'3"	6'3"	1.000"	.900"	9	AB-100-4	
AW-101-3	55-1130	5	30'0"	6'4"	1.250"	1.120"	13	AB-100-7	
AW-101-4	55-1135	6	35'7"	6'4"	1.500"	1.370"	19	AB-100-9	



Base Dwg. - AB-100

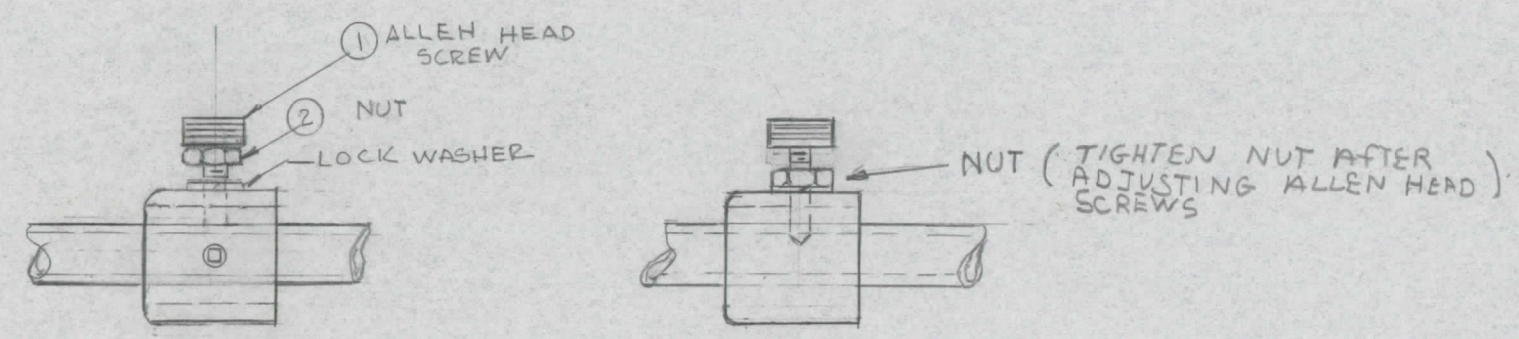
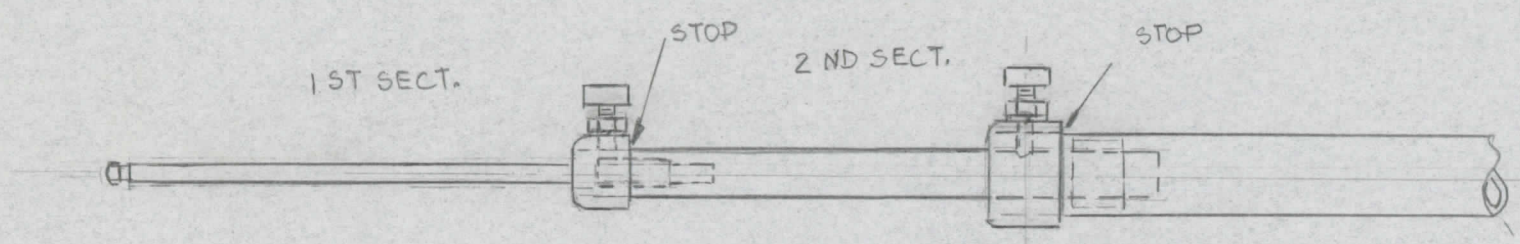
Ref - PRE MAX

REQ. PER UNIT	MODEL	DATE	DESCRIPTION	SYMBOL
			THE TECHNICAL MATERIEL CORP. MAMARONECK, NEW YORK	
			ANTENNA, WHIP	
		6/3/11/58		SA
			CHECKED	FINAL APPROVAL
			DRAWN	
			HEAT TREAT. SPEC.	
			FINISH & SPEC. NO.	AW-101
			ELEC. DES. APP.	
			MECH. DES. APP.	

TOLERANCES  
 DEC. DIM. ±  
 FRAC. DIM. ±  
 ANGULAR DIM. ±

SCALE:  
 MAXIMUM ALLOWABLE TOLERANCES HAVE BEEN DETERMINED AND ANY DEVIATIONS WILL BE CAUSE FOR REJECTION.  
 REMOVE ALL BURRS AND SHARP EDGES

					REVISIONS		
E.M.N. NO.	DRAFT	CHKD	ZONE	LTR	DESCRIPTION	DATE	APPROVED



PULL OUT ANTENNA UNTIL 1<sup>ST</sup> AND 2<sup>ND</sup> SECTION HIT STOP'S, DO NOT FORCE PAST STOP'S -

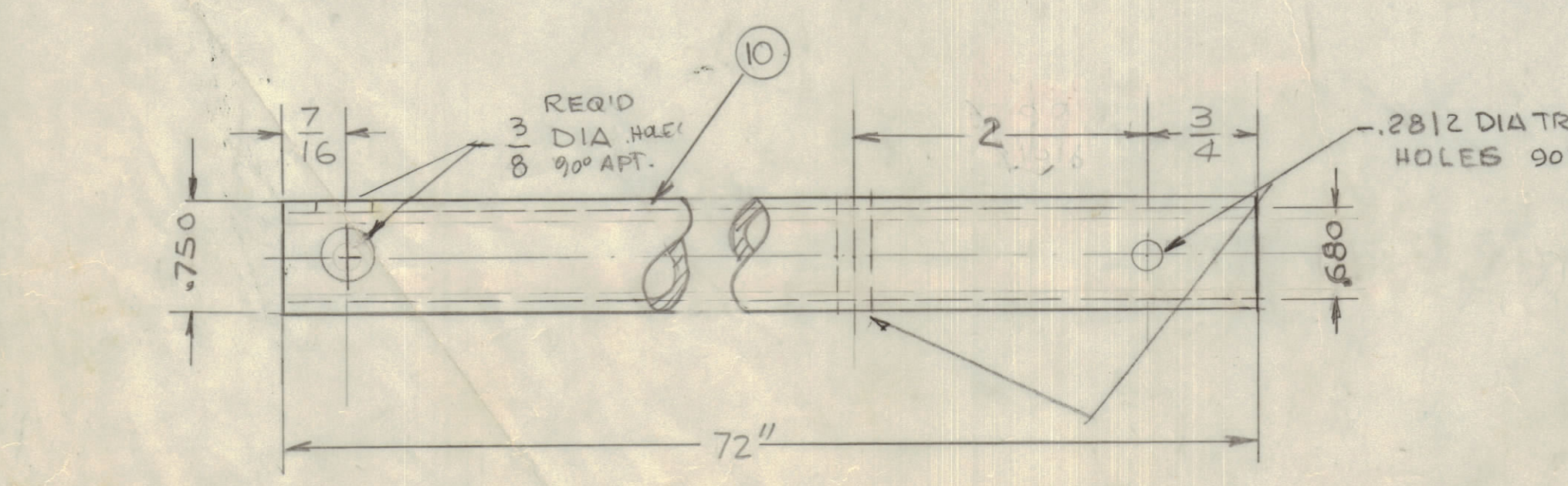
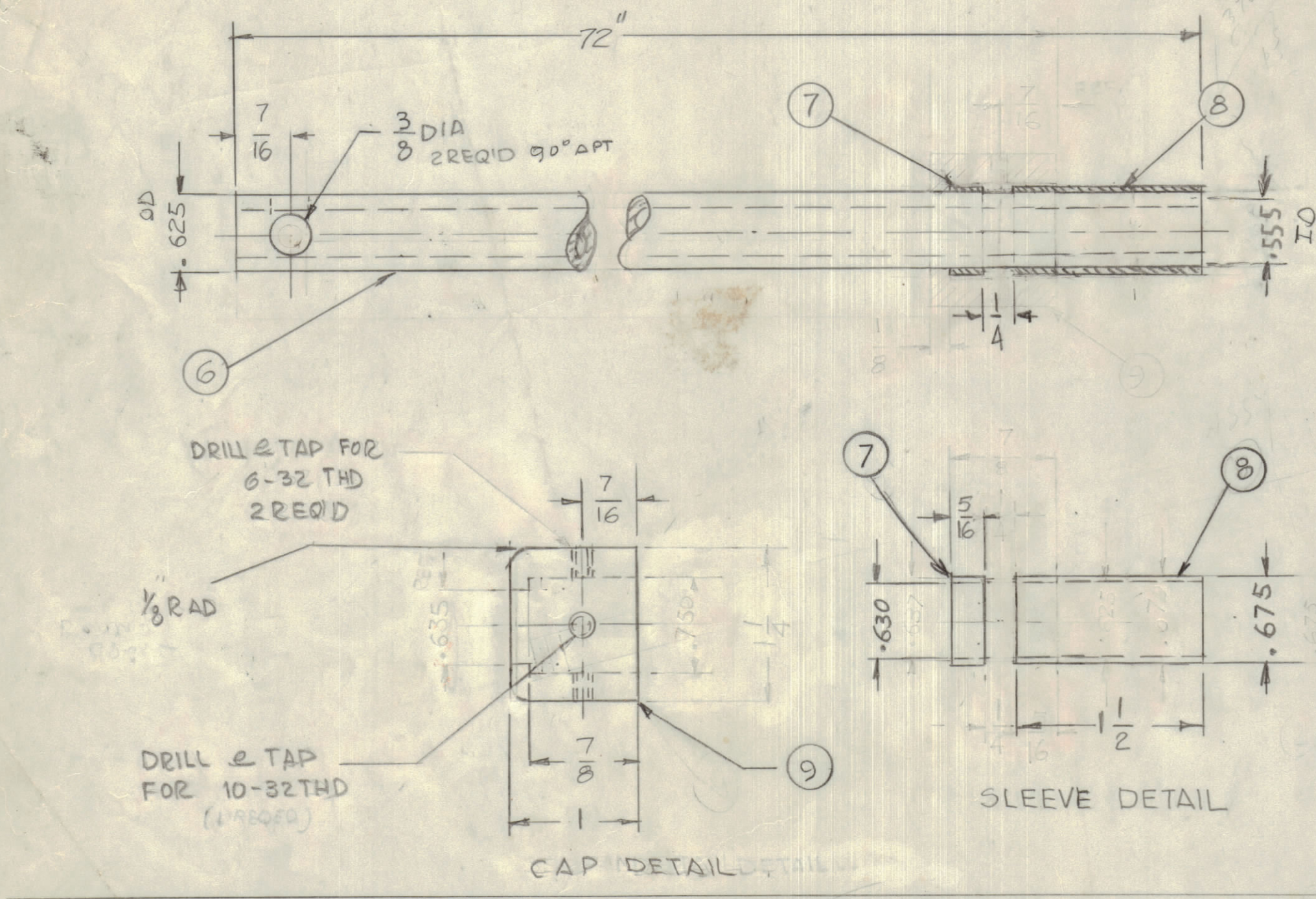
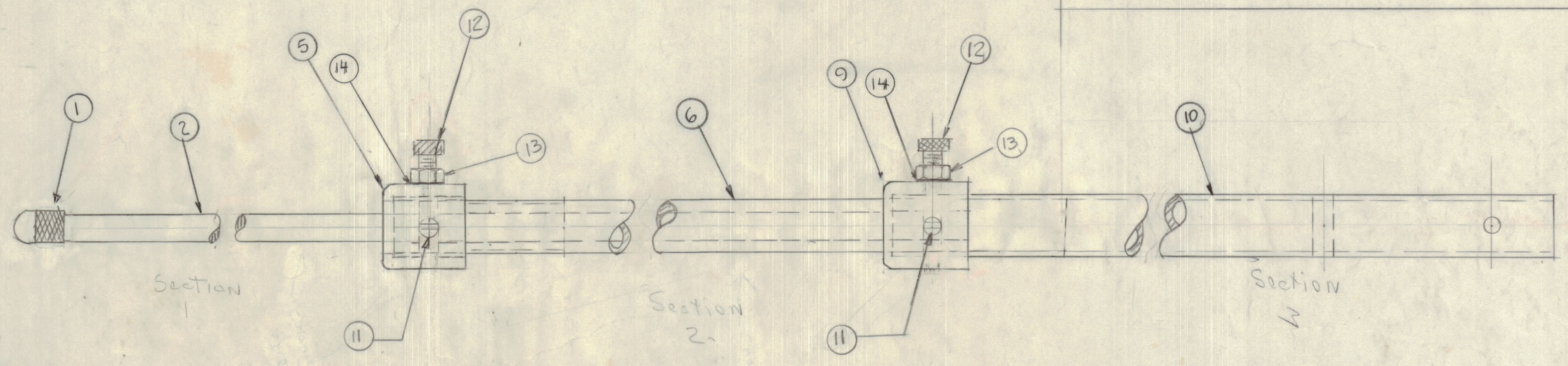
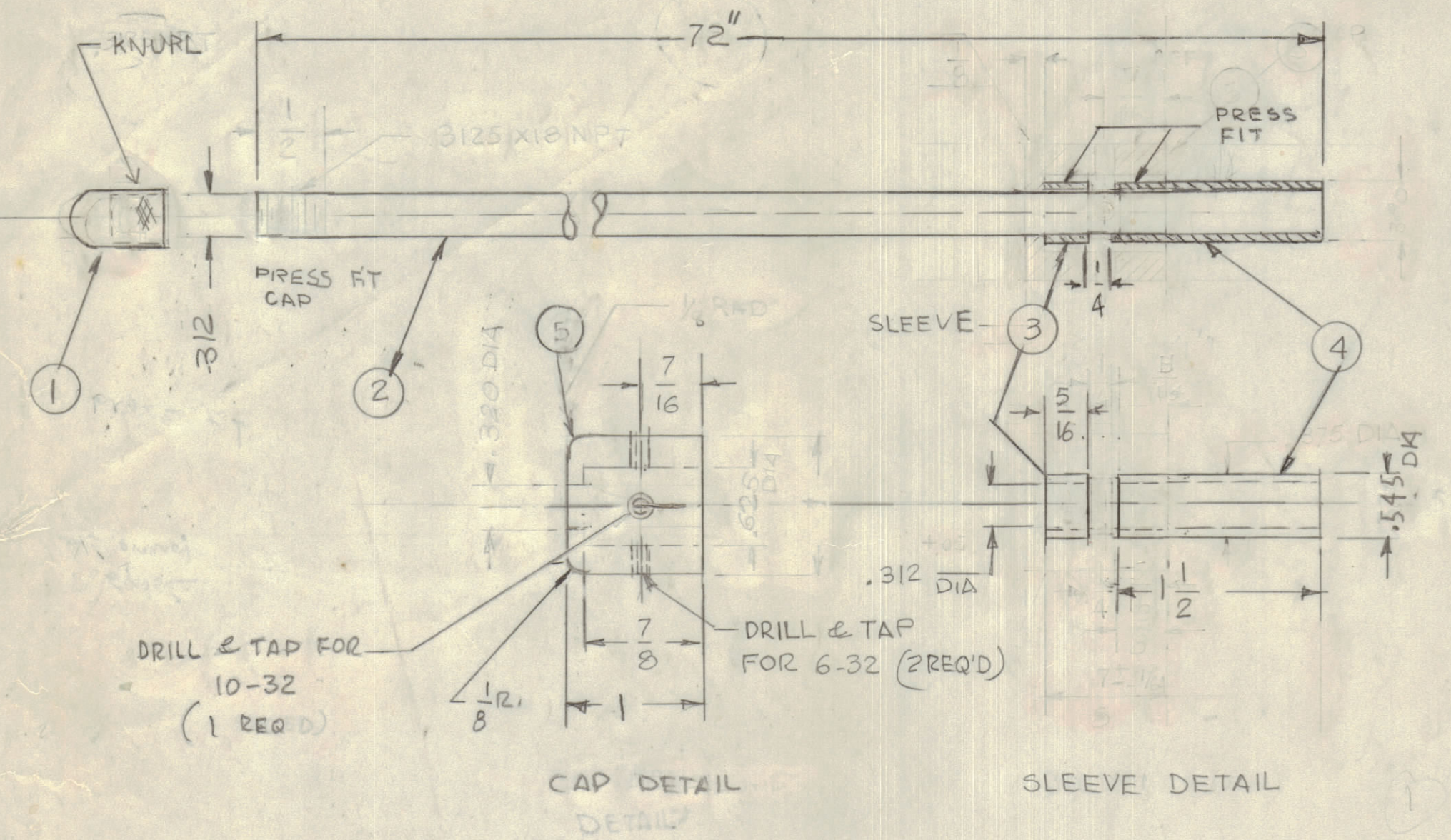
TO LOCK ANTENNA SECTIONS, LOOSEN ALLEN HEAD SCREW'S, SLIDE SECTIONS TO STOP'S, ADJUST NUT ITEM 2 TO TOP OF ALLEN SCREW'S. WITH ALLEN WRENCH TIGHTEN ALL SCREW'S TO SECURE SECTION FROM SLIDING UP & DOWN, (DO NOT OVER THIGTEN) WITH 3/8 WRENCH TURN NUT (ITEM 2) C.W. AND TIGHTEN TO ACT AS A DOUBLE LOCKING NUT

QTY / UNIT	MODEL USED ON	ASS'Y NO.	REQ'D	ITEM	PART NUMBER	DESCRIPTION	SYM.
LIST OF MATERIAL							
APPLICATION CODE			FINAL APPROVAL		DATE		
			MECH. DES.		DATE		
			ELECT. DES.		DATE		
			CHECKED		DATE		
MATERIAL FINISH			DRAWN		DATE		
			SIZE	CODE IDENT. NO.	DWG NO.	ISSUE	
NOTICE TO PERSONS RECEIVING THIS DRAWING THE TECHNICAL MATERIEL CORPORATION claims proprietary right in the material disclosed hereon. This drawing is issued in confidence for engineering information only and may not be reproduced or used to manufacture anything shown hereon without permission from THE TECHNICAL MATERIEL CORPORATION to the user. This drawing is loaned for mutual assistance and is subject to recall at any time.			B		82679		
			SCALE		SHEET		OF

**THE TECHNICAL MATERIEL CORP.**  
MAMARONECK, NEW YORK

AW 101-1 INFO INSTRUMENTATION

REVISIONS							
E.M.N.O	DRAFT	CHKD	ZONE	LTR	DESCRIPTION	DATE	APPROVED
	GDL			X1	DIMS. ON TIME CLARIFIED	2-8-89	
	GDL			Ø	ORIGINAL RELEASE FOR PRODUCTION	3-20-91	



5470  
312  
y

675  
680  
675

AW101-3  
No sections

EXAMPLE  
AW101-3 = 1/8 AT 3 sections  
AW101-6 = 3/8 AT 6 sections

750  
680  
70  
0.25

750  
680  
70  
= 70

QTY. REQ.	ITEM	PART NO.	DESCRIPTION	SYMBOL
2	14	LWE 1032 MRN	WASHER, LOCK INT.	
2	13	NTH1032 BP10	NUT, HEX	
1	12	SC155-1032B14	SCREW CAP CYLINDRICAL	
4	11	SLHY0632SS4	SET, SCREW	
1	10	.7500D-.680IDx72"	TUBING TYPE 304 SS SEAMLESS .035THK	
1	9	PM1618-5	CAP, RETAINER SS	
1	8	.675 OD X 1 1/2	SLEEVE ALUM.	
1	7	.675 O.D. X 5/16	SLEEVE ALUM.	
1	6	.625 OD-.565 ID x 72"	TUBING, TYPE 304 SS SEAMLESS .035THK	
1	5	PM1618-4	CAP, RETAINER SS	
1	4	.375 OD X 1 1/2	SLEEVE ALUM.	
1	3	.375 OD X 5/16	SLEEVE ALUM.	
1	2	.3120D-.035WALLx72"	TUBING, TYPE 304 SS SEAMLESS .035THK	
1	1	.312ID	CAP, END, STAINLESS STEEL	

LIST OF MATERIAL  
THE TECHNICAL MATERIEL CORP.  
MAMARONECK, NEW YORK

FINAL APPROVAL	DATE
MECH. DES.	DATE
ELECT. DES.	DATE
CHECKED	DATE
DRAWN	DATE

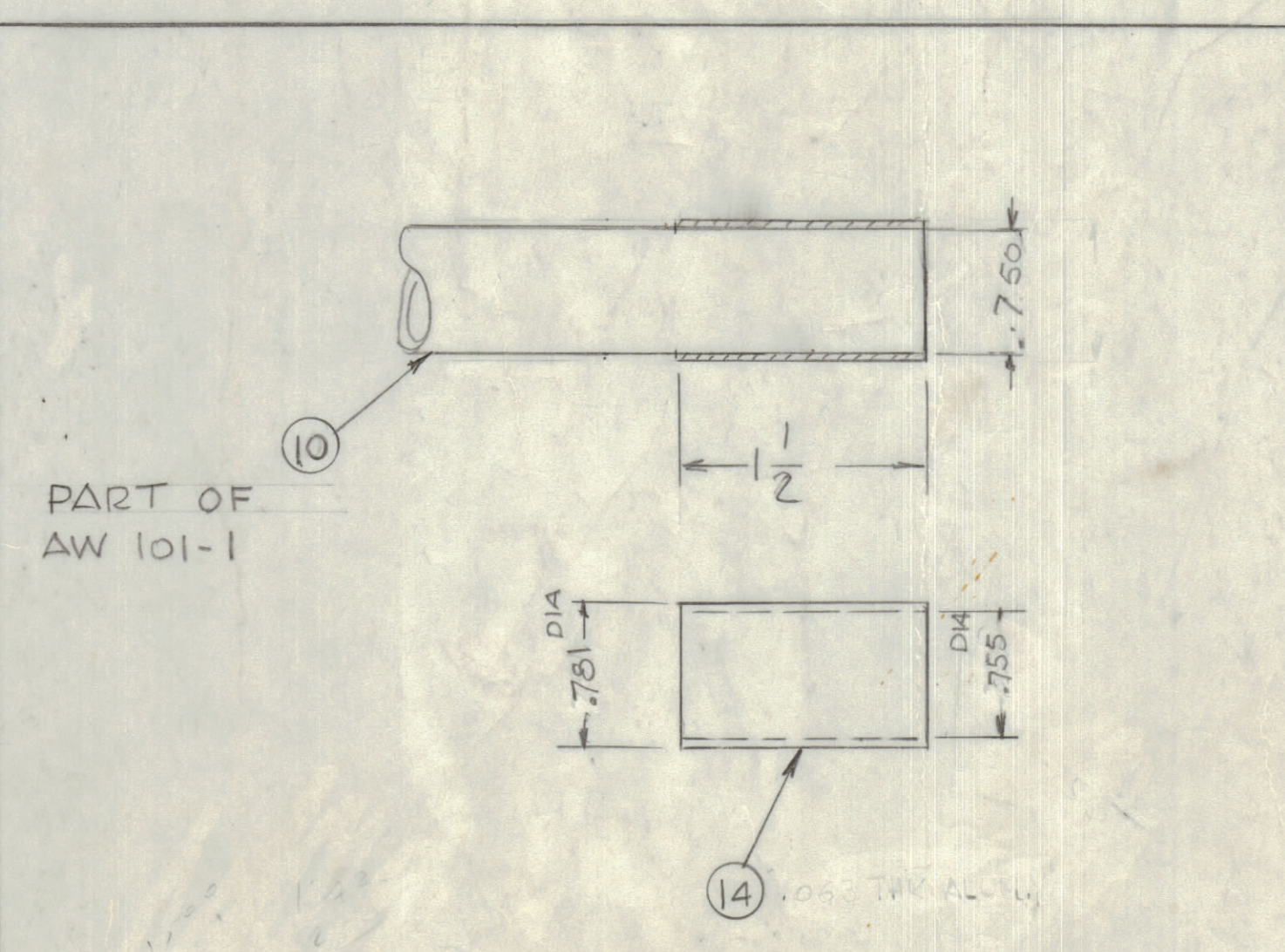
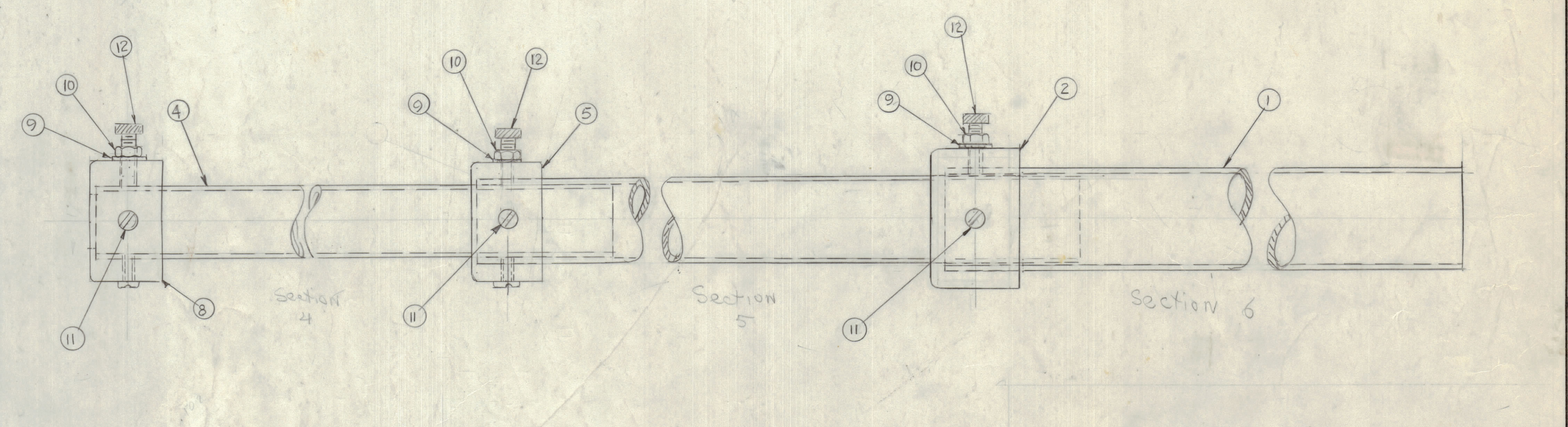
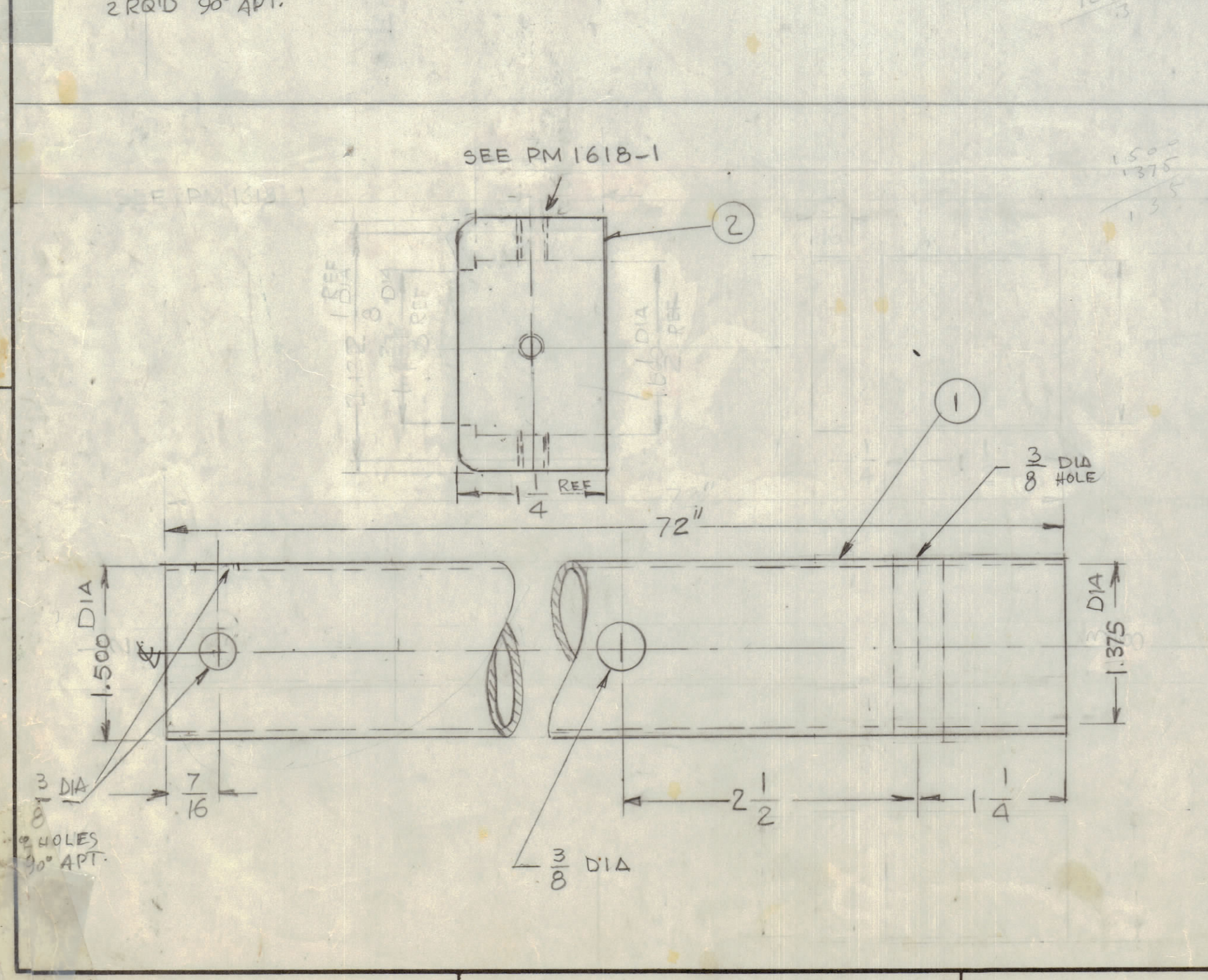
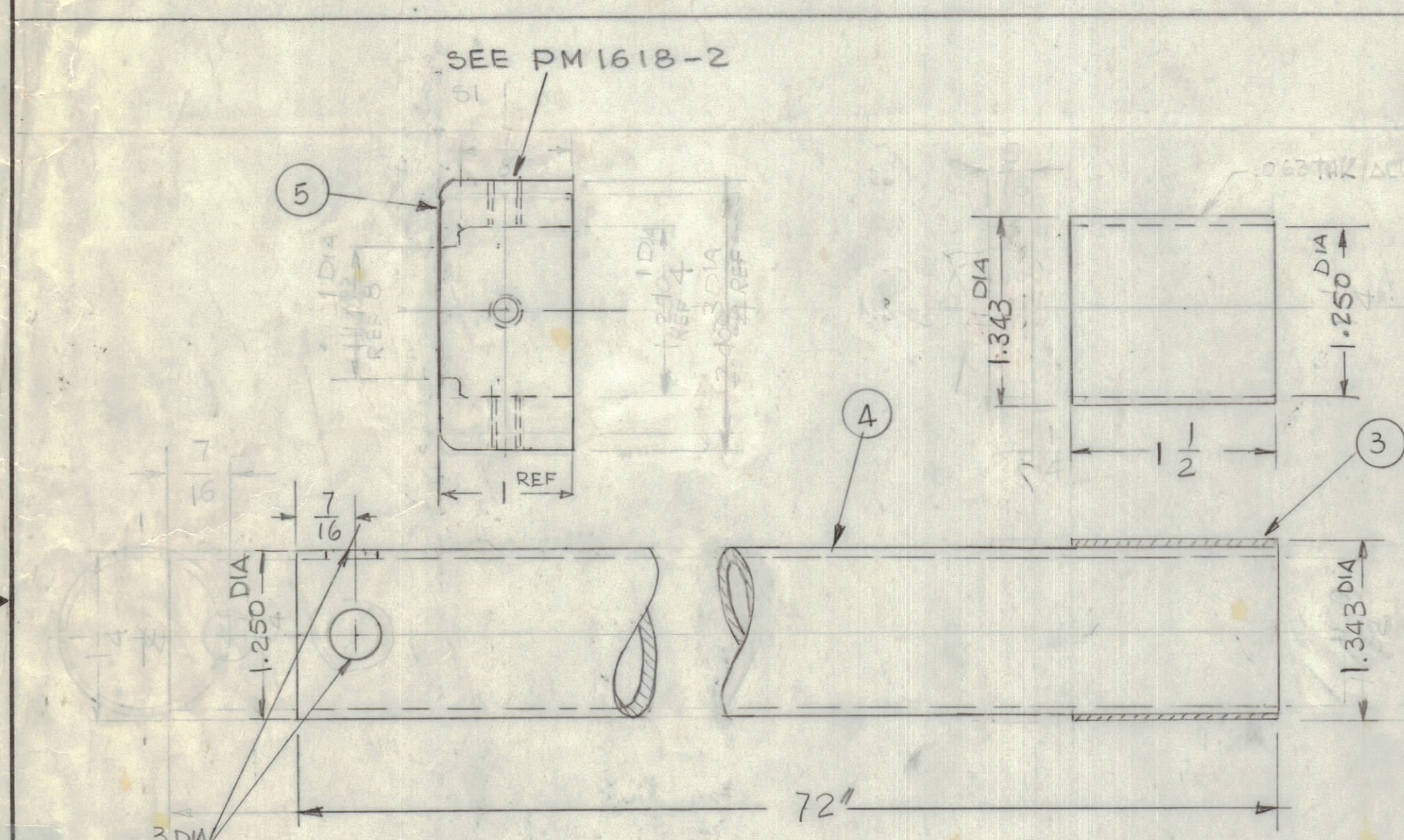
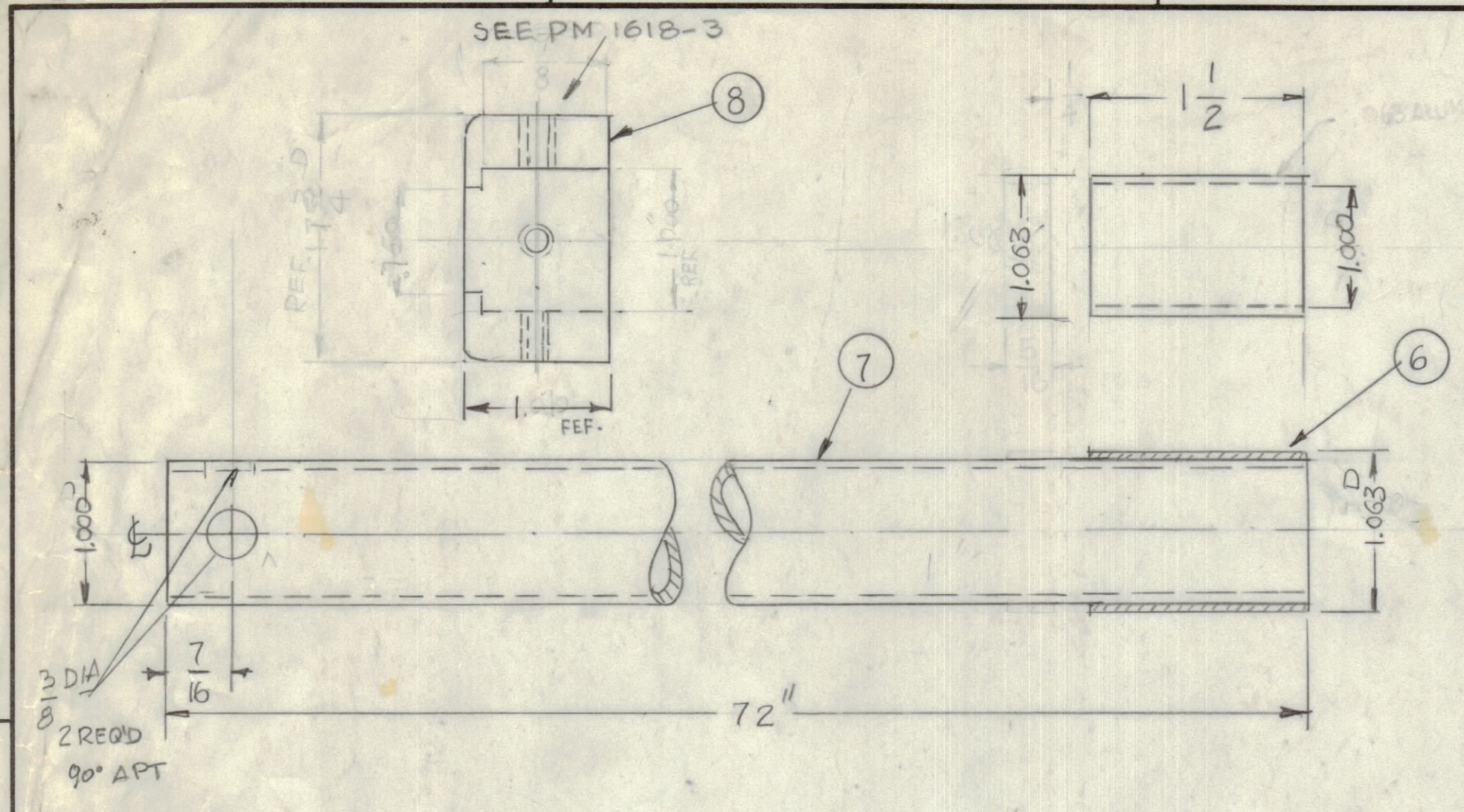
QTY / UNIT	MODEL USED ON	ASSY NO.
APPLICATION		
CODE		
MATERIAL 304 STAINLESS STEEL		
FINISH		

TELESCOPIC ANTENNA WHIP  
STAINLESS STEEL

SIZE	CODE	IDENT NO.	DWG NO.	ISSUE
D	82679		AW101-11	Ø

NOTICE TO PERSONS RECEIVING THIS DRAWING  
THE TECHNICAL MATERIEL CORPORATION claims proprietary right in the material disclosed herein. This drawing is issued in confidence for engineering information only and may not be reproduced or used to manufacture anything shown hereon without permission from THE TECHNICAL MATERIEL CORPORATION to the user. This drawing is loaned for mutual assistance and is subject to recall at any time.

REVISIONS							
E.M.N.O.	DRAFT	CHKD	ZONE	LTR	DESCRIPTION	DATE	APPROVED
	G.D.L.				ORIGINAL RELEASE FOR PRODUCTION	1-18-90	
	G.D.L.			A	DWG UPDATED	3-13-91	<i>EG</i>



QTY. REQ.	ITEM	PART NO.	DESCRIPTION	SYMBOL
1	14	.781 x 1/2	SLEEVE ALUMINUM	
1	13	AW 101-1	TELESCOPI ANTENNA WHIP	
6	12	SC155-1032SS14	SCREW, CAP CYL.	
6	11	SLHV10 32 554	SET, SCREW	
6	10	NTH1032 BPI0	NUT, HEX	
6	9	LWS 1032 MEN	WASHER, LOCK	
1	8	PM1618-3	CAP, RETAINER S.S.	
1	7	1.00 x 72"	TUBING TYPE 304 SS SEAMLESS .065 THK	
1	6	1 1/8 OD x 1 1/2	SLEEVE ALUMINUM	
1	5	PM1618-2	CAP, RETAINER S.S.	
1	4	1/4 OD x 72"	TUBING TYPE 304 SS SEAMLESS .065 THK	
1	3	1 1/32 x 1 1/2	SLEEVE ALUMINUM	
1	2	PM1618-1	CAP, RETAINER S.S.	
1	1	1 1/2 OD x 72"	TUBING TYPE 304 SS SEAMLESS .065 THK	

Ref AB106  
BASE

QTY / UNIT	MODEL USED ON	ASSY NO.
	AA-104	
APPLICATION		
CODE		
MATERIAL 304 STAINLESS STEEL		
FINISH		

UNLESS OTHERWISE SPECIFIED DIMENSIONS ARE IN INCHES AND INCLUDE CHEMICALLY APPLIED OR PLATED FINISHES	FINAL APPROVAL <i>gab</i>	DATE 1/10/90
TOLERANCES ON DECIMALS .X ± .05 .XX ± .01 .XXX ± .005	MECH. DES.	DATE
FRACTIONS ± 1/64 ANGLES = 0° - 30°	ELECT. DES.	DATE
	CHECKED	DATE
	DRAWN G.D.L.	DATE 2-8-89

THE TECHNICAL MATERIEL CORP. MAMARONECK, NEW YORK		
TELESCOPIC ANTENNA WHIP STAINLESS STEEL (35 FEET)		
SIZE D	CODE IDENT NO. 82679	DWG NO. AW 101-4
SCALE 1:1	SHEET 2 OF 2	

NOTICE TO PERSONS RECEIVING THIS DRAWING  
THE TECHNICAL MATERIEL CORPORATION claims proprietary right in the material disclosed hereon. This drawing is issued in confidence for engineering information only and may not be reproduced or used to manufacture anything shown hereon without permission from THE TECHNICAL MATERIEL CORPORATION to the user. This drawing is loaned for mutual assistance and is subject to recall at any time.

5

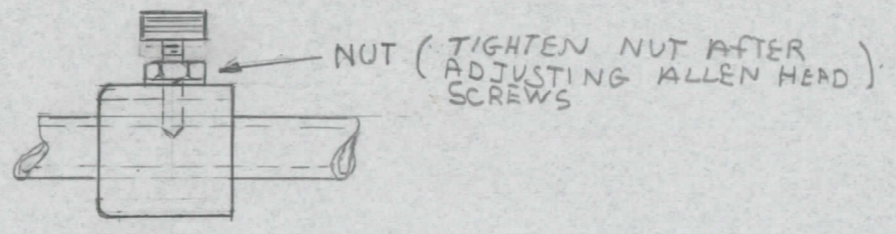
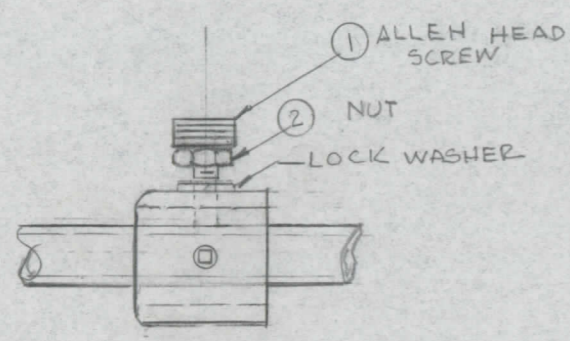
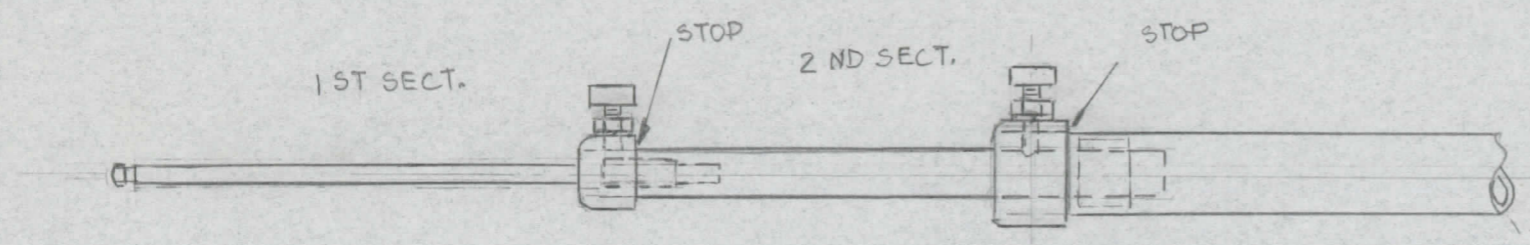
4

3

2

1

REVISIONS							
E.M.N. NO.	DRAFT	CHKD	ZONE	LTR	DESCRIPTION	DATE	APPROVED



PULL OUT ANTENNA UNTIL 1<sup>ST</sup> AND 2<sup>ND</sup> SECTION HIT STOP'S, DO NOT FORCE PAST STOP'S -

TO LOCK ANTENNA SECTIONS, LOOSEN ALLEN HEAD SCREW'S, SLIDE SECTIONS TO STOP'S, ADJUST NUT ITEM 2 TO TOP OF ALLEN SCREW'S. WITH ALLEN WRENCH TIGHTEN ALL SCREW'S TO SECURE SECTION FROM SLIDING UP & DOWN, (DO NOT OVER THIGTEN) WITH 3/8 WRENCH TURN NUT (ITEM 2) C.W. AND TIGHTEN TO ACT AS A DOUBLE LOCKING NUT

REQ'D	ITEM	PART NUMBER	DESCRIPTION	SYM.
-------	------	-------------	-------------	------

LIST OF MATERIAL

**THE TECHNICAL MATERIEL CORP.**  
MAMARONECK, NEW YORK

AW 101-1 INFO INSTALLATION

QTY / UNIT	MODEL USED ON	ASS'Y NO.
APPLICATION		
	CODE	

**NOTICE TO PERSONS RECEIVING THIS DRAWING**  
THE TECHNICAL MATERIEL CORPORATION claims proprietary right in the material disclosed hereon. This drawing is issued in confidence for engineering information only and may not be reproduced or used to manufacture anything shown hereon without permission from THE TECHNICAL MATERIEL CORPORATION to the user. This drawing is loaned for mutual assistance and is subject to recall at any time.

UNLESS OTHERWISE SPECIFIED DIMENSIONS ARE IN INCHES AND INCLUDE CHEMICALLY APPLIED OR PLATED FINISHES

DECIMALS	FRACTIONS	TOLS.	ANGLES
.X ± .05	1/64		
.XX ± .01			0° -30'
.XXX ± .005			

MATERIAL

FINISH

FINAL APPROVAL	DATE
MECH. DES.	DATE
ELECT. DES.	DATE
CHECKED	DATE
DRAWN	DATE

SIZE	CODE IDENT. NO.	DWG NO.	ISSUE
B	82679		

SCALE	SHEET	OF

5

4

3

2

1