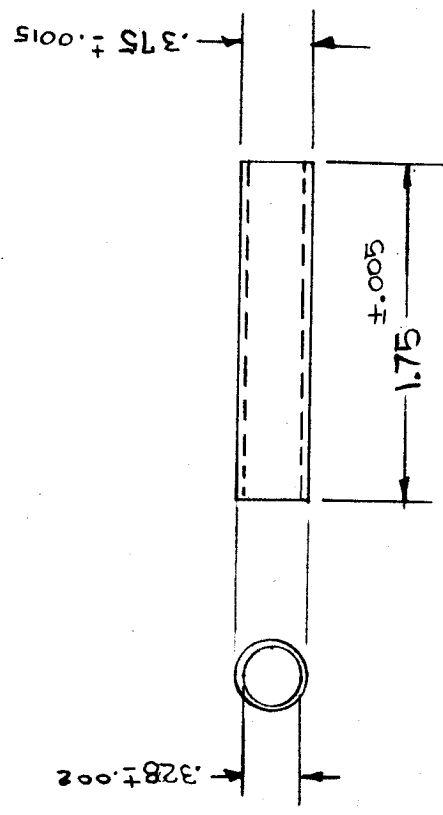


**RELEASED**

IF IT IS FOUND DESIRABLE TO CHANGE ANY TOLERANCE OR OTHER DETAIL SPECIFIED ON THIS DRAWING NOTIFY THE PURCHASER PROMPTLY.

MAXIMUM ALLOWABLE TOLERANCES HAVE BEEN DETERMINED AND DEVIATIONS WILL BE CAUSE FOR REJECTION. REMOVE ALL BURRS AND SHARP EDGES



NOTE  
INSIDE DIA. MUST BE CONCENTRIC WITH OUTSIDE DIA. WITHIN .0015

CF-100

|               |              |             |         |
|---------------|--------------|-------------|---------|
| REQ. PER UNIT | MODEL        | PROJECT NO. | USED ON |
| 4             | FPR          | 104         | A-135   |
| 1             | GPR          | E-458-P     |         |
|               | FRD, J, Z, Z |             |         |

|           |          |  |
|-----------|----------|--|
| REQ. ITEM | PART NO. | DESCRIPTION  |
|           |          | THE TECHNICAL MATERIEL CORP.<br>MAMARONECK, NEW YORK                         |
|           |          | COIL FORM  |
|           |          | DRAWN: <i>[Signature]</i> G.T.O. ELEC. DES. APP. <i>[Signature]</i>          |
|           |          | CHECKED: <i>[Signature]</i> G.T.O. ELEC. DES. APP. <i>[Signature]</i>        |
|           |          | FINAL APPROVAL: <i>[Signature]</i> G.T.O. ELEC. DES. APP. <i>[Signature]</i> |
|           |          | CF-100   |

|           |                    |                |
|-----------|--------------------|----------------|
| REQ. ITEM | STOCK SIZE         | WEIGHT PER PC. |
|           | PHENOLIC           |                |
|           | MATERIAL           |                |
|           | XXXXX LAMINATED    |                |
|           | TYPE & TEMPER      |                |
|           | HEAT TREAT. SPEC.  |                |
|           | FINISH & SPEC. NO. |                |

|            |                           |        |         |                    |           |
|------------|---------------------------|--------|---------|--------------------|-----------|
| ISSUE ITEM | CHANGED FR. M.            | DATE   | CN. NO. | DRAFTS CHECKER     | ENG. APP. |
| C 1        | DIM 1.75 WAS 1.875        | 5-9-63 | 5965    | <i>[Signature]</i> |           |
| B 1        | DIM. CHG. 1.875 WAS 1.750 | 7-1-63 | 588     | <i>[Signature]</i> |           |
| A 3        | ±.0015 WAS ±.002          |        |         |                    |           |
| A 2        | .328 WAS .312             | 7-3-62 | 1       | <i>[Signature]</i> |           |
| A 1        | NOTE ADDED                |        |         |                    |           |

|            |                |   |
|------------|----------------|---|
| ALL OTHERS | DEC. DIM. ±    | DRILL, PUNCH, COMMERCIAL STOCK SIZES AND MANUFACTURERS TOLERANCES ARE NOT INCLUDED. |
|            | FRAC. DIM. ±   |   |
|            | ANGULAR DIM. ± |   |

# STANDARD DRAWING

IF IT IS FOUND DESIRABLE TO CHANGE ANY TOLERANCE OR OTHER DETAIL SPECIFIED ON THIS DRAWING NOTIFY THE PURCHASER PROMPTLY.

MAXIMUM ALLOWABLE TOLERANCES HAVE BEEN DETERMINED AND DEVIATIONS WILL BE CAUSE FOR REJECTION. REMOVE ALL BURRS AND SHARP EDGES

CF-101

USED ON

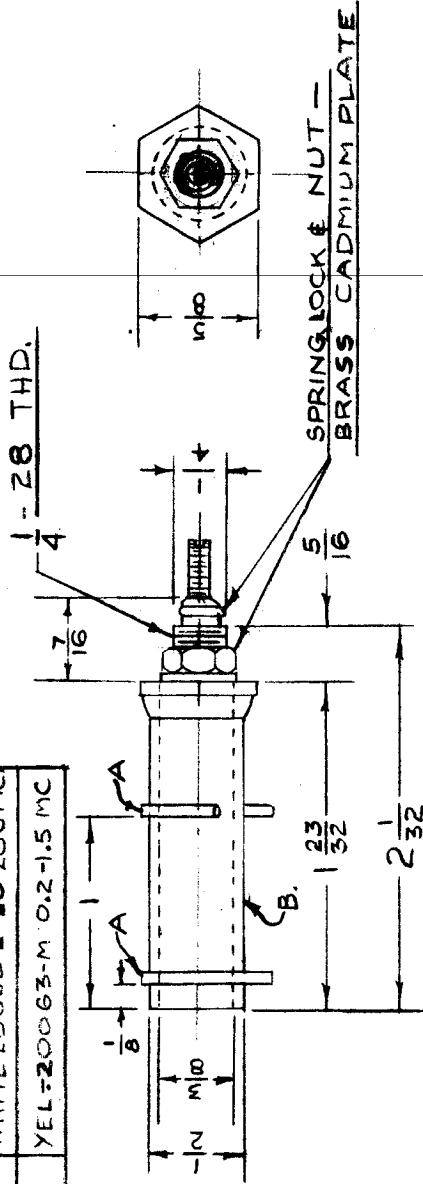
DATE

ASSY. NO.

PROJECT NO.

MODEL

| T.M.C. NO. | MFG. NO. | SLUG                    |
|------------|----------|-------------------------|
| CF-101-1   | LS7      | RED-20063-K 1-20 MC     |
| CF-101-2   | LS7      | WHITE-20063-L 20-200 MC |
| CF-101-3   | LS7      | YEL-20063-M 0.2-1.5 MC  |



MOUNTING HARDWARE & SPRING LOCK SUPPLIED BY MANUFACTURER.

**NOTE:**

- A. - RING TERMINALS -
- B. - COIL BODY - CERAMIC - IMPREG-NATED WITH SILVER SILICONE.

DEMENSION FOR REF. ONLY  
REF: C.T.C. CATALOG # LS7

| REQ. ITEM          | PART NO. | DESCRIPTION  | SYMBOL         |
|--------------------|----------|--|----------------|
| ff                 |          | THE TECHNICAL MATERIEL CORP.<br>MAMARONECK. NEW YORK |                |
| SEE NOTE           | ff       | COIL FORM  |                |
| MATERIAL           | ff       | SLUG TUNED   |                |
| TYPE & TEMPER      | ff       | G.T.O. <i>ppp 10/18/54</i>                           |                |
| HEAT TREAT. SPEC.  | ff       | ELEC. DES. APP. MECH. DES. APP.                      |                |
| FINISH & SPEC. NO. | ff       | CHECKED  | FINAL APPROVAL |
|                    |          |  | CF-101         |

SCALE FULL SIZE

DRILL, PUNCH, COMMERCIAL STOCK SIZES AND MANUFACTURERS TOLERANCES ARE NOT INCLUDED.



IF IT IS FOUND DESIRABLE TO CHANGE ANY TOLERANCE OR OTHER DETAIL SPECIFIED ON THIS DRAWING NOTIFY THE PURCHASER PROMPTLY.

MAXIMUM ALLOWABLE TOLERANCES HAVE BEEN DETERMINED AND DEVIATIONS WILL BE CAUSE FOR REJECTION. REMOVE ALL BURRS AND SHARP EDGES

# STANDARD DRAWING

CF-10A

USED ON

MODEL PROJECT NO. ASSY. NO. DATE

LFA

109

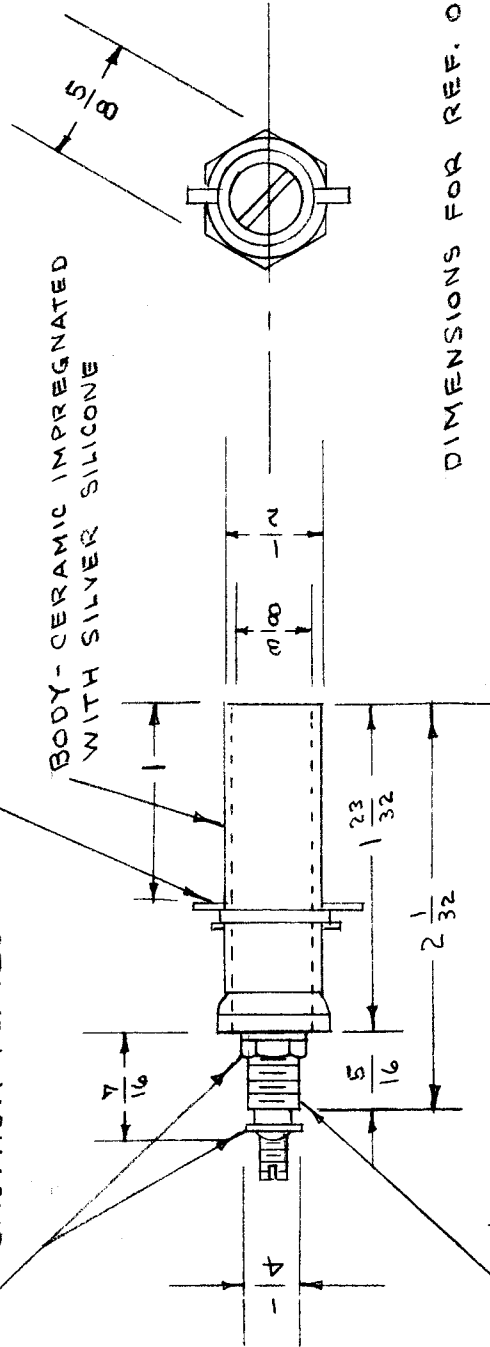
A-204

10-23-57

COLLAR - SILICONE FIBERGLASS  
2 SOLDER LUGS

SPRING LOCK & NUT - BRASS  
CADMIUM PLATED

BODY - CERAMIC IMPREGNATED  
WITH SILVER SILICONE



DIMENSIONS FOR REF. ONLY

USE C.T.C.#1S7 WITH RED SLUG (20063K-1-20 MC)  
MODIFIED AS SHOWN.  
REF.: CAMBRIDGE THERMIONICS CORP.

MOUNTING HARDWARE AND SPRING  
LOCK SUPPLIED BY MANUFACTURER

| REQ. ITEM                          | PART NO.       | DESCRIPTION  | SYMBOL          |
|------------------------------------|----------------|--|-----------------|
|                                    | #              | THE TECHNICAL MATERIEL CORP.<br>MAMARONECK. NEW YORK |                 |
| SEE NOTES                          |                |  |                 |
| MATERIAL                           | WEIGHT PER PC. | COIL FORM  |                 |
|                                    | #              | SLUG TUNED   |                 |
| TYPE & TEMPER                      |                |  |                 |
| C.D.D. 9-19-52 A.J.J. J. <i>AM</i> |                |  |                 |
| DRAWN                              |                | ELEC. DES. APP.                                      | MECH. DES. APP. |
| <i>M.T.S.</i>                      |                |  | <i>#</i>        |
| CHECKED                            |                |  |                 |
| HEAT TREAT. SPEC.                  |                |  |                 |
| FINISH & SPEC. NO.                 |                |  |                 |
| FINAL APPROVAL                     |                |  |                 |
| CF-10A                             |                |  |                 |

SCALE FULL

DRILL, PUNCH, COMMERCIAL STOCK  
SIZES AND MANUFACTURERS  
TOLERANCES ARE NOT INCLUDED.

DEC. DIM. ±  
FRAC. DIM. ±  
ANGULAR DIM. ±

# STANDARD DRAWING

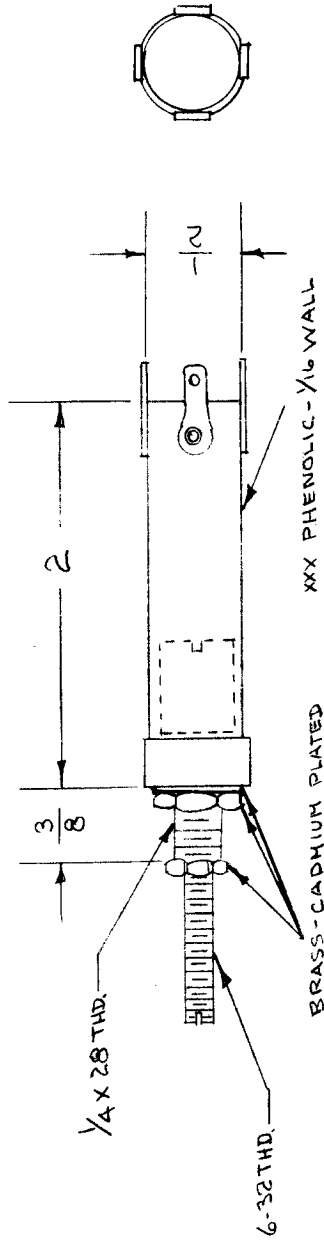
IF IT IS FOUND DESIRABLE TO CHANGE ANY TOLERANCE OR OTHER DETAIL SPECIFIED ON THIS DRAWING NOTIFY THE PURCHASER PROMPTLY.

MAXIMUM ALLOWABLE TOLERANCES HAVE BEEN DETERMINED AND DEVIATIONS WILL BE CAUSE FOR REJECTION. REMOVE ALL BURRS AND SHARP EDGES

| TMC NO.  | CAT. NO. | SLUG                       |
|----------|----------|----------------------------|
| CF-106-1 | LS 4     | 20063 K (RED) 1-20 MC      |
| CF-106-2 | LS 4     | 20063 L (WHITE) 20-200 MC  |
| CF-106-3 | LS 4     | 20063 M (YELLOW) .2-1.5 MC |

USED ON  
 MODEL PROJECT NO. ASSY. NO. DATE

CF-106



MOUNTING HARDWARE AND LOCK NUT SUPPLIED BY MANUFACTURER.

DIMENSIONS FOR REFERENCE ONLY

REF: CAMBRIDGE THERMIONICS CORP. LSA

| REQ. ITEM          | PART NO.       | DESCRIPTION  | SYMBOL |
|--------------------|----------------|--|--------|
| #                  |                | THE TECHNICAL MATERIEL CORP.<br>MAMARONECK, NEW YORK |        |
| #                  |                | COIL FORM  |        |
| #                  |                | SLUG TUNED   |        |
| MATERIAL           | WEIGHT PER PC. |  |        |
| #                  | #              |  |        |
| TYPE & TEMPER      |                |  |        |
| #                  |                |  |        |
| HEAT TREAT. SPEC.  |                |  |        |
| #                  |                |  |        |
| FINISH & SPEC. NO. |                |  |        |

| ISSUE ITEM | CHANGED FROM | DATE | CN. NO. | DRAFTS | CHECKER | ENG. APP. |
|------------|--------------|------|---------|--------|---------|-----------|
|            |              |      |         |        |         |           |

| TOLERANCES     |                                |
|----------------|--------------------------------|
| DEC. DIM. ±    | DRILL, PUNCH, COMMERCIAL STOCK |
| FRAC. DIM. ±   | SIZES AND MANUFACTURERS        |
| ANGULAR DIM. ± | TOLERANCES ARE NOT INCLUDED.   |

| DRAWN          | ELEC. DES. APP. | MECH. DES. APP. |
|----------------|-----------------|-----------------|
| C.D.D. 1-14-53 | G.T.O           |                 |
| CHECKED        | FINAL APPROVAL  |                 |
| AND 1-15-53    | G.T.O           |                 |
|                | CF-106          |                 |

IF IT IS FOUND DESIRABLE TO CHANGE ANY TOLERANCE OR OTHER DETAIL SPECIFIED ON THIS DRAWING NOTIFY THE PURCHASER PROMPTLY.

MAXIMUM ALLOWABLE TOLERANCES HAVE BEEN DETERMINED AND DEVIATIONS WILL BE CAUSE FOR REJECTION. REMOVE ALL BURRS AND SHARP EDGES

| TMC NO. | CORE              | CORE MAT'L  |
|---------|-------------------|-------------|
| CF107-1 | (WHITE) 50-200MC  | IRN-9       |
| CF107-2 | (RED) 1-20MC      | CARBONY 1 E |
| CF107-3 | (YELLOW) .2-1.5MC | CARBONY 1 C |
| CF107-4 | NO CORE           | -           |

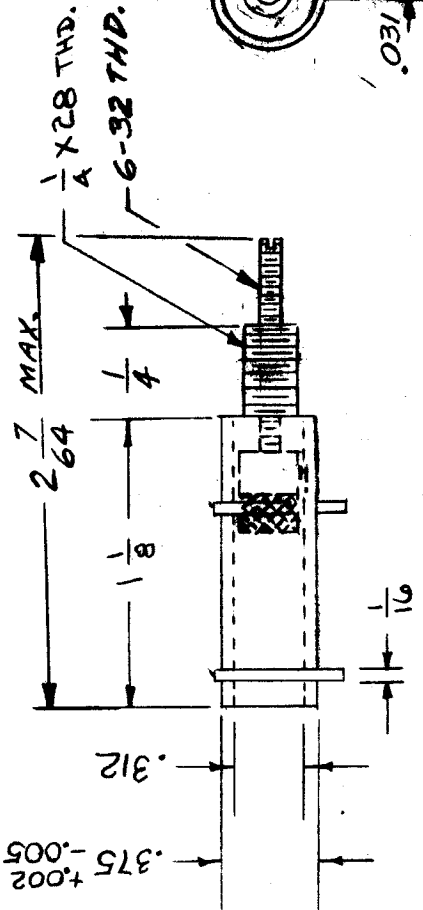
EXAMPLE:

CF107-3 N  
 COMPONENT CORE NO BRASS INSERT

N = NO BRASS INSERT  
 B = WITH BRASS INSERT

MOUNTING HARDWARE SUPPLIED BY MANUFACTURER (ONE HEX NUT AND ONE INTERNAL TOOTH LOCKWASHER).

MAXIMUM OPERATE TORQUE: 2.5 IN. OUNCE



MATERIAL AND FINISH:

- COIL FORM: PBG PHENOLIC, VARNISH IMPREG.
- SOLDER TERM: BRASS, 0.0003 SILVER PLATE.
- CORE SHAFT: BRASS, 0.0003 CADMIUM PLATE
- JAM NUT: BRASS, 0.0002 CADMIUM PLATE
- MOUNTING NUT: BRASS, 0.0002 CADMIUM PLATE

LOCKWASHER: PHOSPHOR BRONZE, 0.0003 CADMIUM PLATE

| ISSUE ITEM | CHANGED FROM  | DATE     | CN. NO. | DRAFTS CHECKER | ENG. APP. |
|------------|---|----------|---------|----------------|-----------|
| G          | DIM CHG.  | 3-11-64  | 15898   | WUW            |           |
| E          | COMPLETELY REVISED  | 3-11-64  | 15898   | WUW            |           |
| F          | NOTE (B) WAS CREATING IMPROVED MOUNTING NUT WITH BRASS SILVER | 7-27-62  | 6973    | G.S.           |           |
| D          | CLARIFIED CAT. LETTERS  | 11-15-59 | 4       | P.L.           |           |
| C          | CF-107-4 ADDED  | 8-22-57  | 3       | SC             |           |
| B          | "C" INDEM. A DDED "L" ADDED "EXAMPLE" ADDED "N.B. ADDED       | 11-15-53 | 2       | WUW            |           |
| A          | SHAPE OF COIL FORM CHGD.                                      | 6/14/53  | 1       | CDD            |           |

TOLERANCES

DEC. DIM. ± .005  
 FRAC. DIM. ± 1/64  
 ANGULAR DIM. ±

SCALE 5401-167 (1465)

DRILL, PUNCH, COMMERCIAL STOCK SIZES AND MANUFACTURERS TOLERANCES ARE NOT INCLUDED.

CF 107 G

USE ON PROJECT NO. ASSY. NO.

MODEL

| REQ. ITEM     | PART NO.       | DESCRIPTION                                       | SYMBOL |
|---------------|----------------|---|--------|
| #             | #              | THE TECHNICAL MATERIEL CORP. MAMARONECK. NEW YORK |        |
| SEE NOTE      | #              | COIL FORM, SLUG TUNED.                            |        |
| MATERIAL      | WEIGHT PER PC. |   |        |
| TYPE & TEMPER |                |   |        |
| #             | #              |   |        |
| #             | #              |   |        |
| #             | #              |   |        |

C.D.D. 1-14-53 G.T.O.

DRAWN ELEC. DES. APP.

CHECKED

DATE 1-15-53

110

CF 107 G

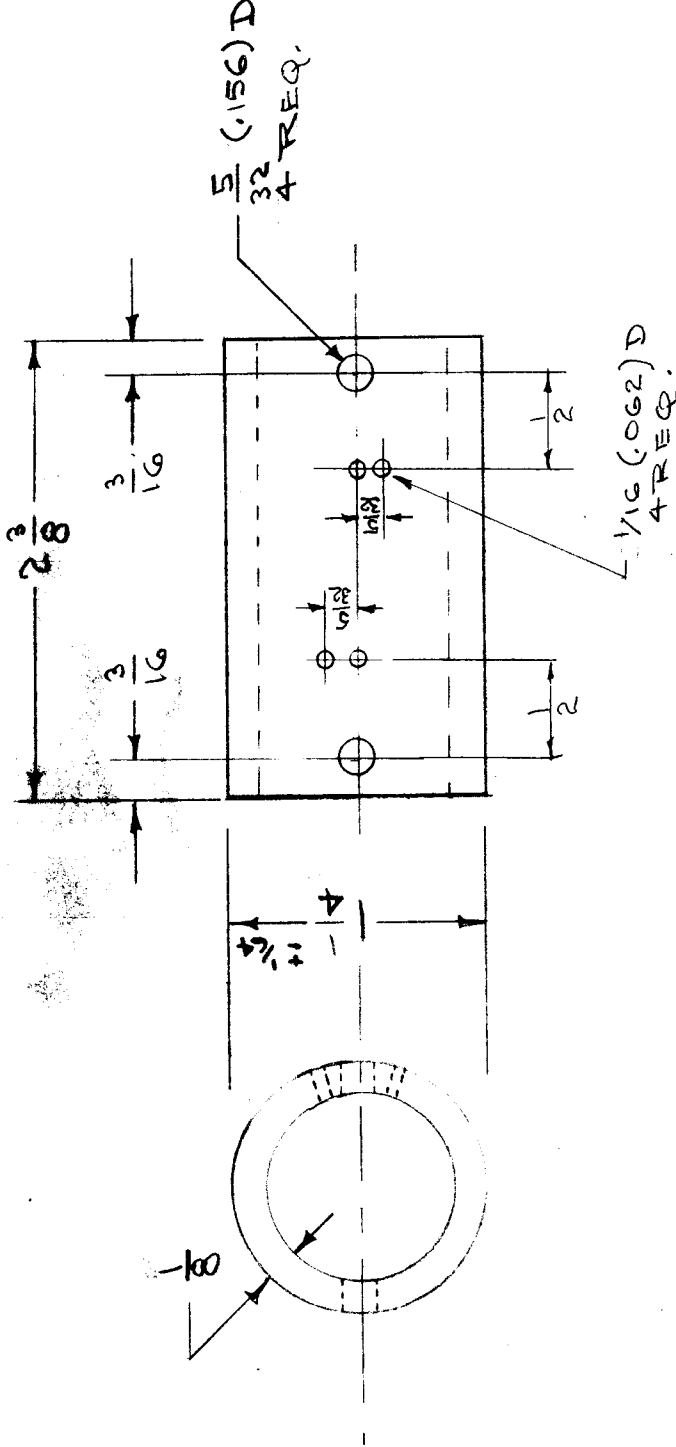
IF IT IS FOUND DESIRABLE TO CHANGE ANY TOLERANCE OR OTHER DETAIL SPECIFIED ON THIS DRAWING NOTIFY THE PURCHASER PROMPTLY.

MAXIMUM ALLOWABLE TOLERANCES HAVE BEEN DETERMINED AND DEVIATIONS WILL BE CAUSE FOR REJECTION. REMOVE ALL BURRS AND SHARP EDGES

CF-108

USED ON

|               |       |             |           |         |
|---------------|-------|-------------|-----------|---------|
| REQ. PER UNIT | MODEL | PROJECT NO. | ASSY. NO. | DATE    |
| 2             | XFK   |             | A-344     | 6/18/51 |



|       |      |                    |         |         |        |         |           |
|-------|------|--------------------|---------|---------|--------|---------|-----------|
| ISSUE | ITEM | CHANGED FROM       | DATE    | CN. NO. | DRAFTS | CHECKER | ENG. APP. |
| B     | 2    | MATERIAL ADDED     | 7/30/54 | 2       | JAB    | COB     | ATT       |
| A     | 1    | ILLUSTRATION ADDED | 6/19/51 | 1       | EDD    | JAB     | ATT       |

TOLERANCES  
 DEC. DIM. ±  
 FRAC. DIM. ± 1/32  
 OTHERS ANGULAR DIM. ±

SCALE 1:1

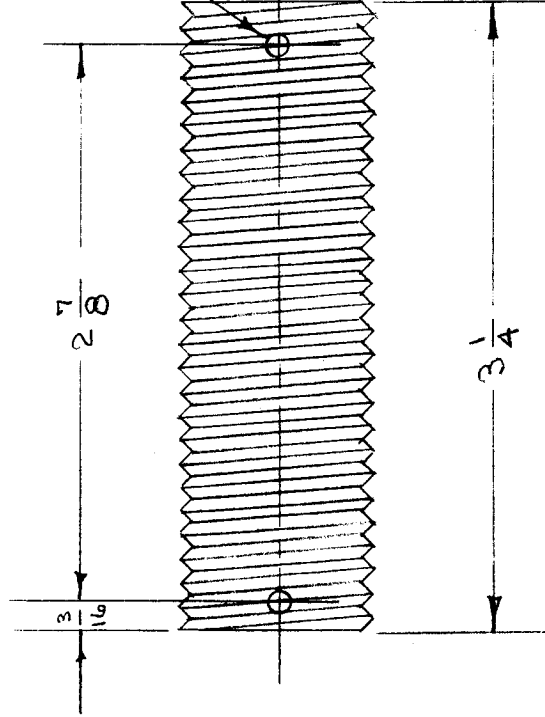
DRILL, PUNCH, COMMERCIAL STOCK SIZES AND MANUFACTURERS TOLERANCES ARE NOT INCLUDED.

|           |          |  |                 |
|-----------|----------|--|-----------------|
| REQ. ITEM | PART NO. | DESCRIPTION                                      | SYMBOL          |
|           |          | TECHNICAL MATERIEL CORP.<br>MAMARONECK. NEW YORK |                 |
|           |          | COIL FORM  |                 |
|           |          | STOCK SIZE                                       |                 |
|           |          | ISOLANTITE UNGLAZED                              |                 |
|           |          | MATERIAL   | WEIGHT PER PC.  |
|           |          | TYPE & TEMPER                                    |                 |
|           |          | HEAT TREAT. SPEC.                                |                 |
|           |          | FINISH & SPEC. NO.                               |                 |
|           |          | DRAWN  | ELEC. DES. APP. |
|           |          | C.D.D.   | A. J. J.        |
|           |          | CHECKED  | JAB             |
|           |          | MECH. DES. APP.                                  | W.D.            |
|           |          | FINAL APPROVAL                                   | CF-108          |

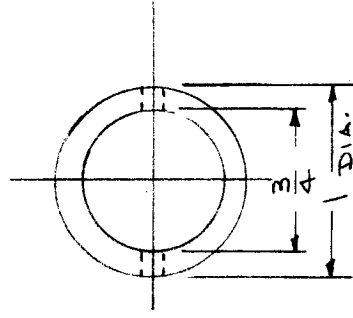
IF IT IS FOUND DESIRABLE TO CHANGE ANY TOLERANCE OR OTHER DETAIL SPECIFIED ON THIS DRAWING NOTIFY THE PURCHASER PROMPTLY.

MAXIMUM ALLOWABLE TOLERANCES HAVE BEEN DETERMINED AND DEVIATIONS WILL BE CAUSE FOR REJECTION. REMOVE ALL BURRS AND SHARP EDGES

NOTE: 24 RIGHT HAND THREADS PER INCH. 90° GROOVE



6-32 CLEARANCE HOLES  
4 HOLES REQD.



IMPORTANT TOLERANCES:

90° V HELD ON TOP OF EACH GROOVE  
MINIMUM DEPTH BELOW GROOVE TOP .017.  
FORM SHELL TO BE CYLINDRICAL.

CF-109

USED ON

QTY PER UNIT

| MODEL | PROJECT NO. | ASSY. NO. | DATE     |
|-------|-------------|-----------|----------|
| VOX   | 101         | A-243     | 12-28-51 |
| PMD-1 | 285         | A-243     | 8/17/54  |
| PMD-2 | 285         | A-243     | 10/28/54 |

| ISSUE ITEM | CHANGED FROM    | DATE     | CN. NO. | DRAFTS CHECKER | ENG. APP. |
|------------|-----------------|----------|---------|----------------|-----------|
| B 2        | TOL. NOTE ADDED | 11/10/54 | 2       | JAW            | ASJ       |
| A 1        | TOL. SPECIFIED  | 8/28/54  | 1       | JAW            | ASJ       |

TOLERANCES

ALL OTHERS  
DEC. DIM. ± 1/64  
FRAC. DIM. ± 1/64  
ANGULAR DIM. ±

DRILL, PUNCH, COMMERCIAL STOCK  
SIZES AND MANUFACTURERS  
TOLERANCES ARE NOT INCLUDED.

| REQ. ITEM | PART NO.           | DESCRIPTION  | SYMBOL          |
|-----------|--------------------|--|-----------------|
|           | 1" D. ROUND        | THE TECHNICAL MATERIEL CORP.<br>MAMARONECK. NEW YORK |                 |
|           | CERAMIC            | COIL FORM,<br>CERAMIC                                |                 |
|           | STOCK SIZE         |  |                 |
|           | MATERIAL           |  |                 |
|           | WEIGHT PER PC.     |  |                 |
|           | TYPE & TEMPER      |  |                 |
|           | HEAT TREAT. SPEC.  |  |                 |
|           | FINISH & SPEC. NO. |  |                 |
|           | DRAWN              | ELEC. DES. APP.                                      | MECH. DES. APP. |
|           | C.D.D. 1-13-53     | AJJ  | PJA             |
|           | CHECKED            | AJJ  | WJC             |
|           | DATE 1-16-53       |  |                 |
|           | FINAL APPROVAL     |  |                 |
|           | SUPERCEDES         |  |                 |
|           | AMS 265            |  |                 |
|           |                    | CF-109   | B               |



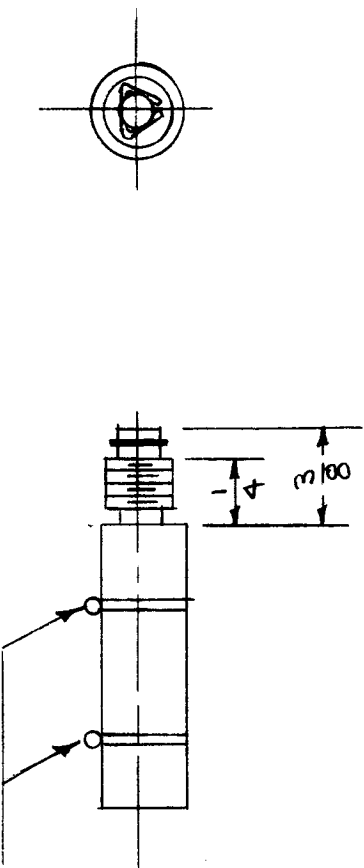


IF IT IS FOUND DESIRABLE TO CHANGE ANY TOLERANCE OR OTHER DETAIL SPECIFIED ON THIS DRAWING NOTIFY THE PURCHASER PROMPTLY.

MAXIMUM ALLOWABLE TOLERANCES HAVE BEEN DETERMINED AND DEVIATIONS WILL BE CAUSE FOR REJECTION. REMOVE ALL BURRS AND SHARP EDGES

| TMC NO   | SLUG NO. |
|----------|----------|
| CF-111-1 | 20063 A  |
| CF-111-2 | 20063 B  |
| CF-111-3 | 20063 C  |

RING TRIMMERS



NOTES:

To Be Supplied Less Brass  
Lead On Slug Insert.  
To Be supplied with Phenolic  
(Grade XXXP) Body.

REF: Cambridge Thermionic Corp. LS3-LRS

| REQ. ITEM | PART NO. | DESCRIPTION  | SYMBOL          |
|-----------|----------|--|-----------------|
|           |          | THE TECHNICAL MATERIEL CORP.<br>MAMARONECK, NEW YORK |                 |
|           |          | FORM, COIL   |                 |
|           |          | SLUG TUNED   |                 |
|           |          | DRAWN 6-25-53  |                 |
|           |          | C.P.P.   |                 |
|           |          | CHECKED  |                 |
|           |          | ELEC. DES. APP.                                      | MECH. DES. APP. |
|           |          | HEAT TREAT. SPEC.                                    |                 |
|           |          | FINISH & SPEC. NO.                                   | CF-111          |

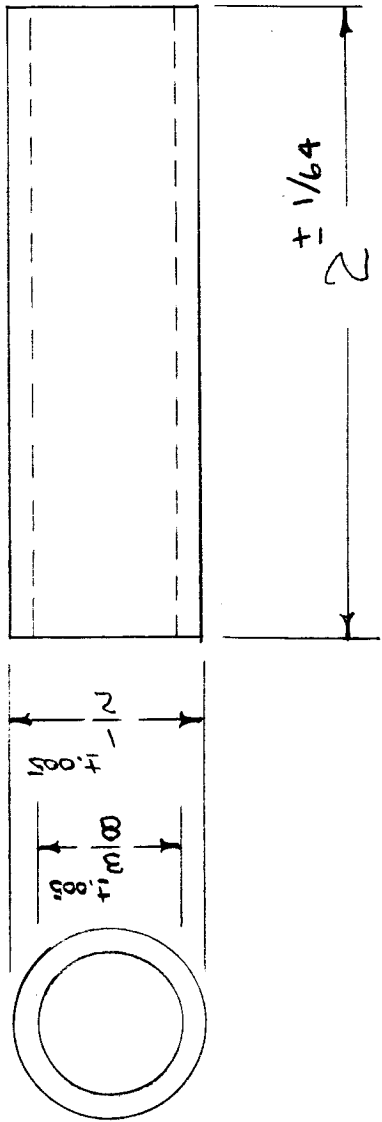
| ISSUE ITEM  | CHANGED FROM | DATE | CN. NO. | DRAFTS | CHECKER | ENG. APP. |
|---|--------------|------|---------|--------|---------|-----------|
| TOLERANCES  |              |      |         |        |         |           |
| SCALE   |              |      |         |        |         |           |
| DRILL, PUNCH, COMMERCIAL STOCK<br>SIZES AND MANUFACTURERS<br>TOLERANCES ARE NOT INCLUDED. |              |      |         |        |         |           |
| DEC. DIM. ±   |              |      |         |        |         |           |
| FRAC. DIM. ±  |              |      |         |        |         |           |
| ANGULAR DIM. ±  |              |      |         |        |         |           |

CF-112 A

|               |             |
|---------------|-------------|
| USED ON       |             |
| REQ. PER UNIT | PROJECT NO. |
| 16            | GRR         |
| MODEL         | DATE        |
|               | 6-17-55     |

IF IT IS FOUND DESIRABLE TO CHANGE ANY TOLERANCE OR OTHER DETAIL SPECIFIED ON THIS DRAWING NOTIFY THE PURCHASER PROMPTLY.

MAXIMUM ALLOWABLE TOLERANCES HAVE BEEN DETERMINED AND DEVIATIONS WILL BE CAUSE FOR REJECTION. REMOVE ALL BURRS AND SHARP EDGES.



REF: GENERAL CERAMICS

|                    |                 |  |        |
|--------------------|-----------------|--|--------|
| REQ. ITEM          | PART NO.        | DESCRIPTION  | SYMBOL |
|                    |                 | THE TECHNICAL MATERIEL CORP.<br>MAMARONECK. NEW YORK |        |
| STEATITE           |                 | COIL FORM  |        |
| MATERIAL           | WEIGHT PER PC.  |  |        |
| TYPE & TEMPER      |                 |  |        |
| HEAT TREAT. SPEC.  |                 |  |        |
| FINISH & SPEC. NO. |                 |  |        |
| DRAWN              | ELEC. DES. APP. | MECH. DES. APP.                                      |        |
| THH                | G.T.O           |  |        |
| CDD. 12-8-54       | PLK 4-1-55      |  | WOL    |
| FINAL APPROVAL     |                 |  |        |
|                    |                 | CF-112   | A      |

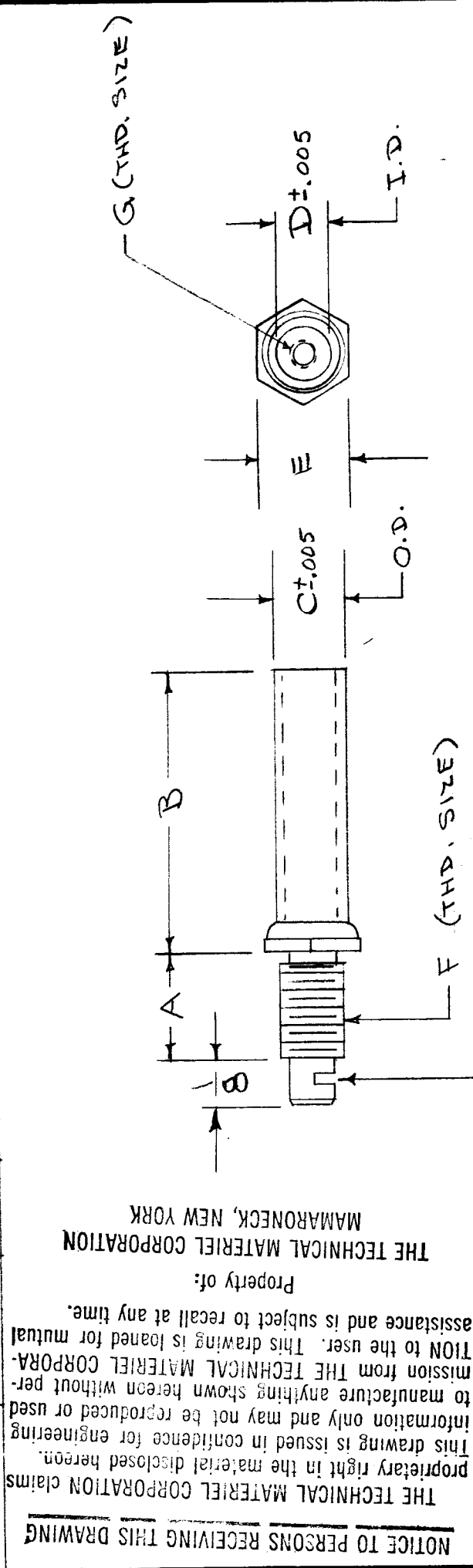
|   |                 |                  |                    |                |           |
|---|-----------------|------------------|--------------------|----------------|-----------|
| ISSUE ITEM  | CHANGED FROM    | DATE             | CN. NO.            | DRAFTS CHECKER | ENG. APP. |
| A   | CLERICAL CHANGE | 3-12-65          | 4                  | J.P.           | J.P.S.    |
| TOLERANCES  |                 |                  |                    |                |           |
| SCALE   |                 |                  |                    |                |           |
| DRILL, PUNCH, COMMERCIAL STOCK SIZES AND MANUFACTURERS TOLERANCES ARE NOT INCLUDED. |                 |                  |                    |                |           |
| ALL OTHERS  | DEC. DIM. $\pm$ | FRAC. DIM. $\pm$ | ANGULAR DIM. $\pm$ |                |           |

CF-114 A

# STANDARD DRAWING

|               |       |             |           |      |
|---------------|-------|-------------|-----------|------|
| USED ON       |       | PROJECT NO. | ASSY. NO. | DATE |
| REQ. PER UNIT | MODEL |             |           |      |

| TMC NO.   | CAT. NO. | A    | B     | C    | D    | E   | F      | MATERIAL | G.   |
|-----------|----------|------|-------|------|------|-----|--------|----------|------|
| CF-114 -1 | LS6      | 9/32 | 21/32 | .260 | .205 | 3/8 | 10-32  | L-5      | 3-48 |
| CF-114 -2 | LS5      | 9/32 | 11/16 | .375 | .313 | 1/2 | 1/4-28 | L-5      | 6-32 |
| CF-114 -3 | LS7      | 5/16 | 11/16 | .500 | .375 | 5/8 | 1/4-28 | L-5      | 6-32 |



PROPERTY OF THE TECHNICAL MATERIEL CORPORATION, NEW YORK

Property of:

THE TECHNICAL MATERIEL CORPORATION

THIS DRAWING IS ISSUED IN CONFIDENCE FOR ENGINEERING PROPRIETARY RIGHT IN THE MATERIAL DISCLOSED HEREON. INFORMATION ONLY AND MAY NOT BE REPRODUCED OR USED TO MANUFACTURE ANYTHING SHOWN HEREON WITHOUT PERMISSION FROM THE TECHNICAL MATERIEL CORPORATION TO THE USER. THIS DRAWING IS LOANED FOR MUTUAL ASSISTANCE AND IS SUBJECT TO RECALL AT ANY TIME.

NOTICE TO PERSONS RECEIVING THIS DRAWING

KEYWAY FOR LOCKING SPRING

MTG. HARDWARE & LOCKING SPRING TO BE FURNISHED BY HEAR.

REF: CAMBRIDGE THERMIONIC CORP. OR EQUIV.

|           |          |                              |        |
|-----------|----------|------------------------------|--------|
| REQ. ITEM | PART NO. | DESCRIPTION                  | SYMBOL |
|           |          | THE TECHNICAL MATERIEL CORP. |        |
|           |          | MAMARONECK, NEW YORK         |        |
|           |          | COIL FORM                    |        |
|           |          | w/o SLUG                     |        |
|           |          | CERAMIC                      |        |
|           |          | STOCK SIZE                   |        |
|           |          | MATERIAL                     |        |
|           |          | WEIGHT PER PC                |        |
|           |          | TYPE & TEMPER                |        |
|           |          | C.D.D. 2/14/55               |        |
|           |          | DRAWN                        |        |
|           |          | CHECKED                      |        |
|           |          | ELEC. DES. APP.              |        |
|           |          | MECH. DES. APP.              |        |
|           |          | FINAL APPROVAL               |        |
|           |          | CE-114                       | A      |

|       |      |  |        |         |        |         |           |
|-------|------|--|--------|---------|--------|---------|-----------|
| ISSUE | ITEM | CHANGED FROM   | DATE   | CN. NO. | DRAFTS | CHECKER | ENG. APP. |
| A     | 1    | ON CHART DIMS "C" & "D" CLARIFIED, DIM. ± .005 ADDED | 1-9-63 | 7992    |        |         |           |

SCALE

TOLERANCES

DEC. DIM. ±

FRAC. DIM. ±

ANGULAR DIM. ±

DRILL, PUNCH, COMMERCIAL STOCK SIZES AND MANUFACTURERS TOLERANCES ARE NOT INCLUDED.

HEAT TREAT. SPEC. SILICONE IMPREGNATED

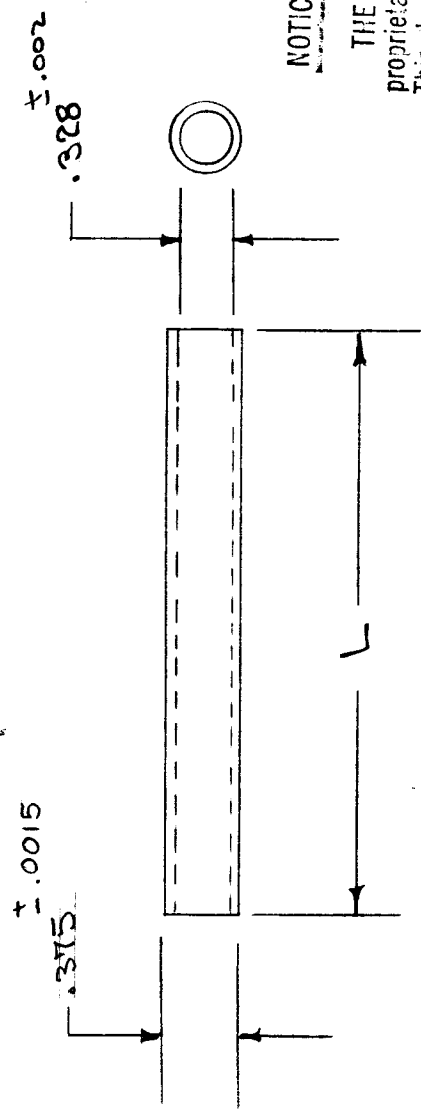
IF IT IS FOUND DESIRABLE TO CHANGE ANY TOLERANCE OR OTHER DETAIL SPECIFIED ON THIS DRAWING NOTIFY THE PURCHASER PROMPTLY.

MAXIMUM ALLOWABLE TOLERANCES HAVE BEEN DETERMINED AND DEVIATIONS WILL BE CAUSE FOR REJECTION. REMOVE ALL BURRS AND SHARP EDGES

**STANDARD DRAWING**

CF-117 B

|               |        |             |         |
|---------------|--------|-------------|---------|
| REQ. PER UNIT | MODEL  | PROJECT NO. | USED ON |
| 1             | A-1387 |             |         |
|               |        | ASSY. NO.   | DATE    |
|               |        |             | 5-1-58  |



**NOTICE TO PERSONS RECEIVING THIS DRAWING**

THE TECHNICAL MATERIEL CORPORATION claims proprietary right in the material disclosed hereon. This drawing is issued in confidence for engineering information only and may not be reproduced or used to manufacture anything shown hereon without permission from THE TECHNICAL MATERIEL CORPORATION to the user. This drawing is loaned for mutual assistance and is subject to recall at any time.

Property of:  
THE TECHNICAL MATERIEL CORPORATION  
MAMARONECK, NEW YORK

TYPE DESIGNATION TO BE IN FOLLOWING FORM

CF-117-L  
TYPE NO. LENGTH IN INCHES

EXAMPLE:  
CF-117-1.5 = COIL FORM 1 1/2" LONG  
CF-117-.75 = " 3/4"

| ISSUE ITEM | CHANGED FROM | DATE     | CN. NO. | DRAFTS CHECKER | ENG. APP. |
|------------|--------------|----------|---------|----------------|-----------|
| B          | HOW ENCLOSED | 11/21/57 | 1       | Hilde          | JA        |
| A          | CLARIFIED    | 2/23/56  | 1       | B              | JA        |

|                   |   |
|-------------------|---|
| TOLERANCES        |   |
| DEC. DIM. ±       | SCALE   |
| FRAC. DIM. ± 1/64 | DRILL, PUNCH, COMMERCIAL STOCK SIZES AND MANUFACTURERS TOLERANCES ARE NOT INCLUDED. |
| ANGULAR DIM. ±    |   |

| REQ. ITEM | PART NO.           | DESCRIPTION  | SYMBOL |
|-----------|--------------------|--|--------|
|           | #                  | THE TECHNICAL MATERIEL CORP.<br>MAMARONECK, NEW YORK |        |
|           | STOCK SIZE         | COIL FORM, 3/8 OD                                    |        |
|           | MATERIAL           | CUT TO SIZE  |        |
|           | WEIGHT PER PC.     |  |        |
|           | TYPE & TEMPER      | CDP 3/2S/55  |        |
|           | HEAT TREAT. SPEC.  | DRAWN  |        |
|           | FINISH & SPEC. NO. | ELEC. DES. APP. MECH. DES. APP.                      |        |
|           |                    | FINAL APPROVAL                                       |        |
|           |                    | G.T.O  |        |
|           |                    | CF-117   | B      |







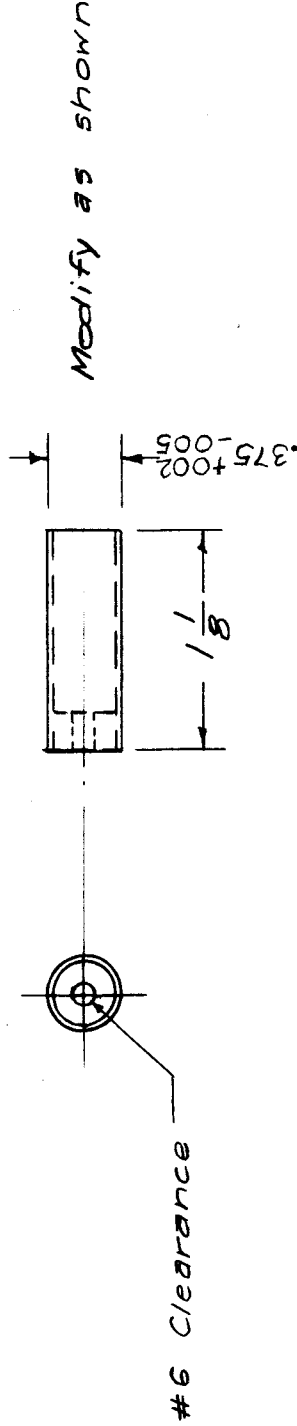
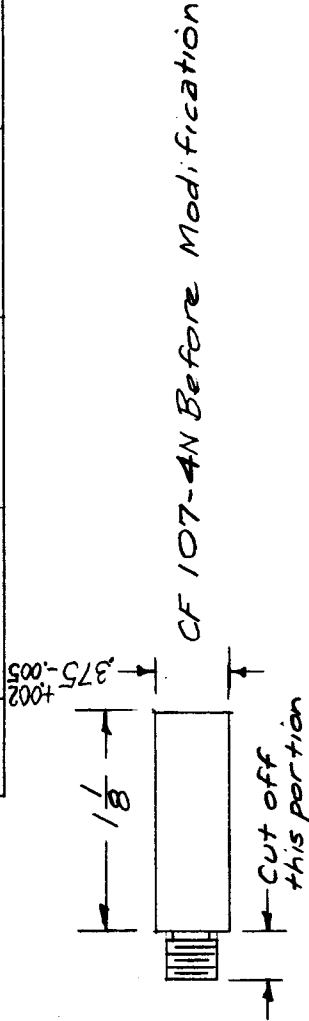


# STANDARD DRAWING

|               |       |                   |      |
|---------------|-------|-------------------|------|
| REQ. PER UNIT | MODEL | USED ON ASSY. NO. | DATE |
|               |       |                   |      |

CF 123

A



Ref- USE CF 107-4N

| REQ. ITEM | PART NO. | DESCRIPTION  | SYMBOL |
|-----------|----------|--|--------|
|           |          | THE TECHNICAL MATERIEL CORP.<br>MAMARONECK. NEW YORK |        |
|           |          | COIL FORM<br>(SBE-1)                                 |        |
|           |          | DRAWN<br>H 7/31/57                                   |        |
|           |          | CHECKED<br>[Signature]                               |        |
|           |          | TYPE & TEMPER  |        |
|           |          | HEAT TREAT. SPEC.                                    |        |
|           |          | FINISH & SPEC. NO.                                   |        |
|           |          | ELEC. DES. APP.                                      |        |
|           |          | MECH. DES. APP.                                      |        |
|           |          | FINAL APPROVAL                                       |        |
|           |          |  | CF 123 |
|           |          |  | A      |

|       |      |   |         |         |        |             |             |
|-------|------|---|---------|---------|--------|-------------|-------------|
| ISSUE | ITEM | CHANGED FROM  | DATE    | CH. NO. | DRAFTS | CHECKER     | ENG. APP.   |
| A     |      | DIM CHG. CF 107-4N WAS<br>C-107-4B. CF 107-4N WAS<br>CF 107-4 | 3-11-66 | 15898   | WHD    | [Signature] | [Signature] |

TOLERANCES  
SCALE:

MAXIMUM ALLOWABLE TOLERANCES HAVE BEEN DETERMINED AND ANY DEVIATIONS WILL BE CAUSE FOR REJECTION.  
REMOVE ALL BURRS AND SHARP EDGES

DEC. DIM. ±  
FRAC. DIM. ± 1/64  
ANGULAR DIM. ±



CF-126 C

|               |           |         |
|---------------|-----------|---------|
| REQ. PER UNIT | USED N    | DATE    |
| MODEL         | ASSY. NO. | DATE    |
| RTF-2         | A-1628    | 1-21-60 |

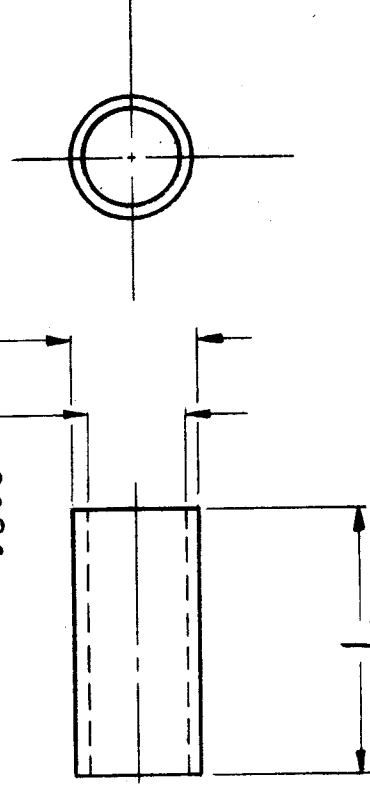
CF-126-1.375

TYPE

NO

LENGTH IN INCHES  
EX. 1.375 = 1 3/8.

.500 ±.003



|           |                   |  |                |
|-----------|-------------------|--|----------------|
| REQ. ITEM | PART NO.          | DESCRIPTION  | SYMBOL         |
|           |                   | THE TECHNICAL MATERIEL CORP.<br>MAMARONECK, NEW YORK |                |
|           | STOCK SIZE        | COIL FORM  |                |
|           | MATERIAL          | (.625 O.D. X .500 I.D.)                              |                |
|           | X X X             | J.C. BIELE   |                |
|           | LAMINATE          | DRAWN  | CHECKED        |
|           | TYPE & TEMPER     | NATURAL  | FINAL APPR VAL |
|           | HEATTREAT.SPEC.   |  |                |
|           | FINISH & SPEC.NO. |  | CF-126 C       |

|         |      |         |         |           |
|---------|------|---------|---------|-----------|
| 82164   | LAB  | CH. NO. | CHECKER | ENG. APP. |
| 3-7-63  | 8411 | DRAFTS  |         |           |
| 1-21-60 | 1799 | DATE    |         |           |

SCALE:  
MAXIMUM ALLOWABLE TOLERANCES HAVE BEEN DETERMINED AND ANY DEVIATIONS WILL BE CAUSE FOR REJECTION. REMOVE ALL BURRS AND SHARP EDGES

REG. PER. UNIT

USED ON

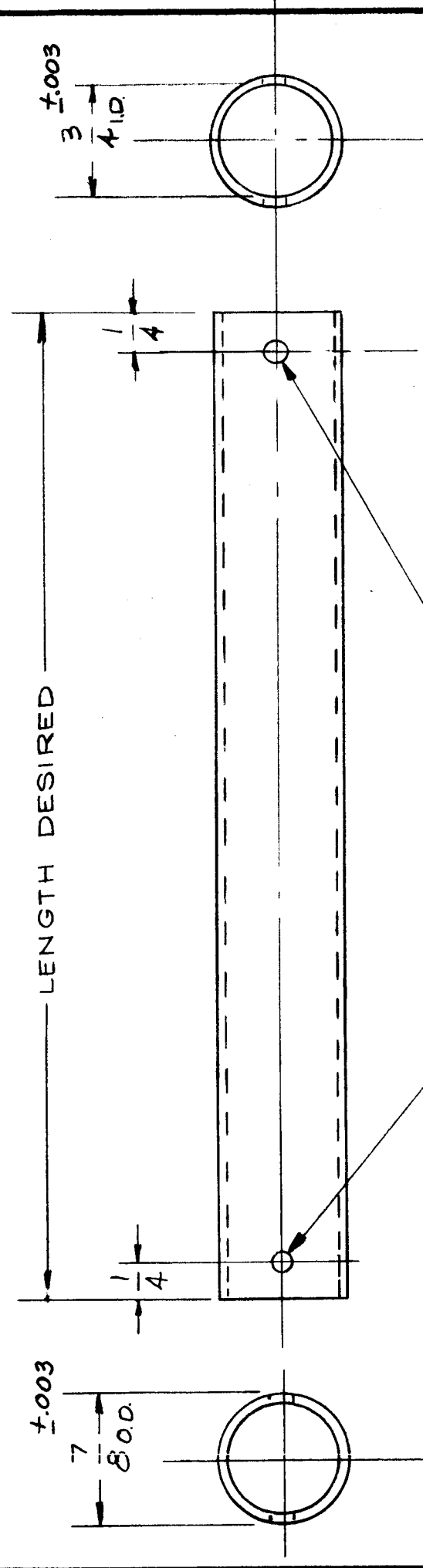
MODEL

ASSY. N.

DATE

CF-127 A

Stain steel



CF-127-6.625

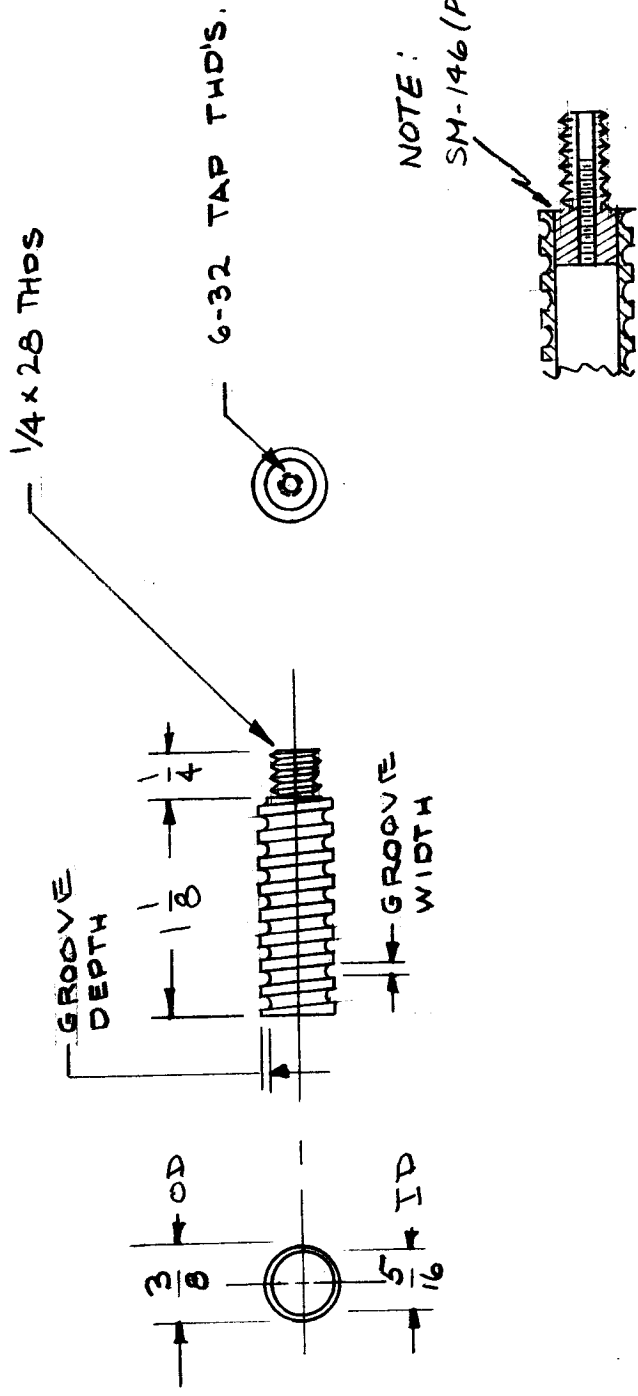
LENGTH IN INCHES  
(EX. 6.625) = 6 5/8

TYPE NO

| REG. ITEM | ITEM               | PART NO.   | DESCRIPTION                  | SYMBOL         |
|-----------|--------------------|--|------------------------------|----------------|
|           |                    | 7/8 O.D.   | THE TECHNICAL MATERIEL CORP. |                |
|           |                    | Phenolic   | MAMARONECK, NEW YORK         |                |
|           |                    | XXXX LAMINATE  | COIL FORM                    |                |
|           |                    | TYPE & TEMPER  | 7/8 O.D. X 3/4 I.D.          |                |
|           |                    | HEAT TREAT. SPEC.  |                              |                |
|           |                    | FINISH & SPEC. NO.   |                              |                |
| A         | Made standard part | 22559  |                              |                |
|           | CHANGED FROM       |  |                              |                |
|           | TOLERANCES         |  |                              |                |
|           | DATE               | CH. NO.  | DRAFTS                       | CHECKER        |
|           |                    | 1  | J.C.B.                       | J.W.B.         |
|           | SCALE:             | MAXIMUM ALLOWABLE TOLERANCES HAVE BEEN DETERMINED AND ANY DEVIATIONS WILL BE CAUSE FOR REJECTION. REMOVE ALL BURRS AND SHARP EDGES |                              |                |
|           | DEC. DIM. ±        |  |                              |                |
|           | FRAC. DIM. ±       | 1/64   |                              |                |
|           | ANGULAR DIM. ±     |  |                              |                |
|           | ISSUE              | DRAWN  | CHECKED                      | FINAL APPROVAL |
|           |                    | J.P.D.   | J.W.B.                       | J.W.B.         |
|           |                    | 2-20-59  |                              |                |
|           |                    |  |                              | CF-127         |

|               |  |       |  |                    |  |      |  |
|---------------|--|-------|--|--------------------|--|------|--|
| REQ. PER UNIT |  | M DEL |  | USED ON ASS'Y. NO. |  | DATE |  |
|               |  |       |  | CF-128             |  | A    |  |

| TMC PART NO. | GROOVE WIDTH | SIZE DEPTH | GROOVES PER INCH | USED   |
|--------------|--------------|------------|------------------|--------|
| CF-128-1     | .020         | .010       | 14               | RFBSD, |
| CF-128-2     | .020         | .010       | 20               | RFBSD, |

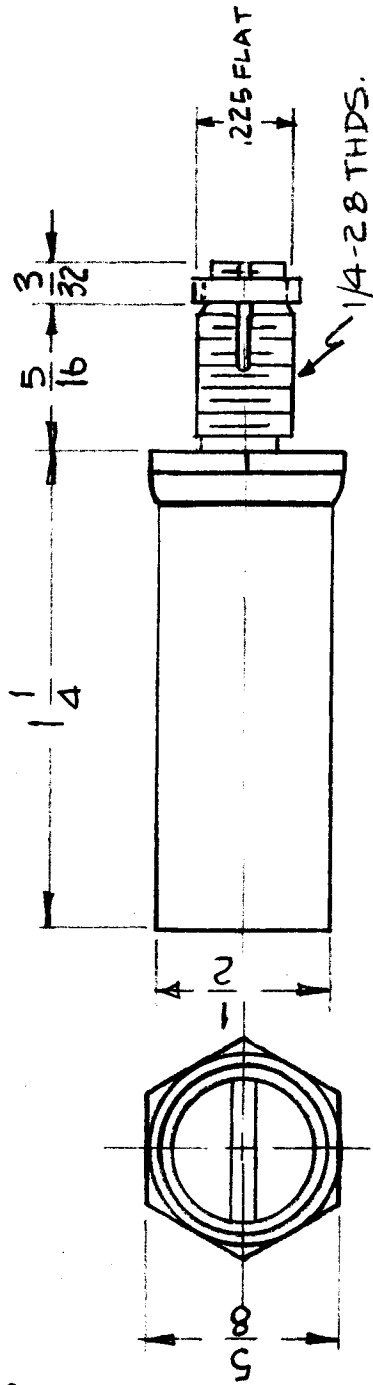
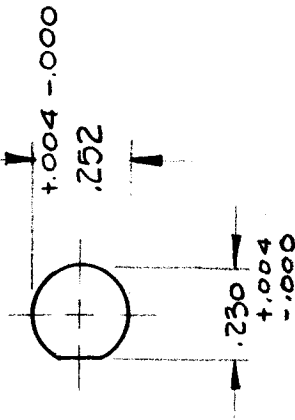


| ISSUE/ITEM   | CHANGED FROM | DATE     | CH. N. | DRAFTS | CHECKER | ENG. APP. | REQ. ITEM | PART NO. | DESCRIPTION  | SYMBOL |
|--|--------------|----------|--------|--------|---------|-----------|-----------|----------|--|--------|
| A 1  | NOTE ADDED   | 10 26 62 | 7525   | Tab    | JDe     | JDe       |           |          | THE TECHNICAL MATERIEL CORP.<br>MAMARONECK, NEW YORK |        |
| TOLERANCES   |              |          |        |        |         |           |           |          | FORM, COIL, GROOVED,<br>W/ BUSHING                   |        |
| DEC. DIM. ±  |              |          |        |        |         |           |           |          |  |        |
| FRAC. DIM. ±   |              |          |        |        |         |           |           |          |  |        |
| ANGULAR DIM. ±   |              |          |        |        |         |           |           |          |  |        |
| SCALE:   |              |          |        |        |         |           |           |          |  |        |
| MAXIMUM ALLOWABLE TOLERANCES HAVE BEEN DETERMINED AND ANY DEVIATIONS WILL BE CAUSE FOR REJECTION. REMOVE ALL BURRS AND SHARP EDGES |              |          |        |        |         |           |           |          |  |        |
| MATERIAL: PHENOLIC LAMINATE  |              |          |        |        |         |           |           |          |  |        |
| TYPE & TEMPER  |              |          |        |        |         |           |           |          |  |        |
| HEAT TREAT. SPEC.  |              |          |        |        |         |           |           |          |  |        |
| FINISH & SPEC. N.  |              |          |        |        |         |           |           |          |  |        |
| CHECKED  |              |          |        |        |         |           |           |          |  |        |
| DRAWN  |              |          |        |        |         |           |           |          |  |        |
| ELEC. DES. APP. MECH. DES. APP.  |              |          |        |        |         |           |           |          |  |        |
| CF-128   |              |          |        |        |         |           |           |          |  | A      |

MOUNTING DETAIL

CF-129

|                    |         |
|--------------------|---------|
| REQ. PER UNIT      | 1       |
| MODEL              | CLL-1   |
| USED ON ASSTY. NO. |         |
| DATE               | 6-17-60 |



MFG. PART NUMBER 2484 (WITHOUT TERMINALS)

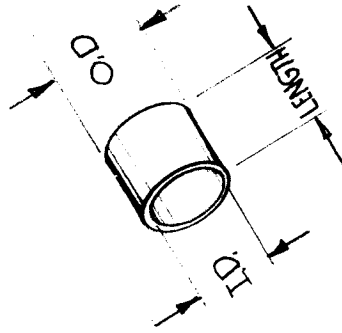
REF: CAMBRIDGE THERMIONIC CORP.

| REQ. ITEM  | DESCRIPTION                  | SYMBOL |
|--|------------------------------|--------|
|  | THE TECHNICAL MATERIEL CORP. |        |
|  | MAMARONECK, NEW YORK         |        |
|  | COIL FORM                    |        |
|  | CERAMIC                      |        |
|  | MATERIAL                     |        |
|  | STOCK SIZE                   |        |
|  | FINISH & SPEC. NO.           |        |
|  | TYPE & TEMPER                |        |
|  | HEAT TREAT. SPEC.            |        |
|  | CHECKER                      |        |
|  | ENG. APP.                    |        |
|  | DATE                         |        |
|  | CH. NO.                      |        |
|  | DRAFTS                       |        |
|  | CHECKER                      |        |
|  | ENG. APP.                    |        |
|  | SCALE:                       | 5-401- |
| MAXIMUM ALLOWABLE TOLERANCES HAVE BEEN DETERMINED AND ANY DEVIATIONS WILL BE CAUSE FOR REJECTION. REMOVE ALL BURRS AND SHARP EDGES |                              |        |
| ISSUE ITEM   | CHANGED FROM                 |        |
| TOLERANCES   |                              |        |
| DEC. DIM. ±  |                              |        |
| FRAC. DIM. ±   |                              |        |
| ANGULAR DIM. ±   |                              |        |
|  | DRAWN                        |        |
|  | CHECKED                      |        |
|  | FINAL APPROVAL               |        |
|  | P. A.                        | CF-129 |
|  | ELEC. DES. APP.              |        |
|  | MECH. DES. APP.              |        |

CF-130

| USED ON        |         |
|----------------|---------|
| REQ. PER. UNIT | 1       |
| MODEL          | DVM-2   |
| ASST. NO.      | DVM-4   |
| DATE           | 6-28-60 |
|                | 2-6-62  |

|              |          |      |      |        |
|--------------|----------|------|------|--------|
| TMC PART NO. | MFG. NO. | OD   | ID   | LENGTH |
| CF-130 -1    |          | .203 | .181 | .165   |



REF. PRECISION PAPER TUBE CO.

|                    |  |                   |  |                              |  |
|--------------------|--|-------------------|--|------------------------------|--|
| REQ. ITEM          |  | PART NO.          |  | SYMBOL                       |  |
|                    |  |                   |  | THE TECHNICAL MATERIEL CORP. |  |
|                    |  | STOCK SIZE        |  | MAMARONECK, NEW YORK         |  |
|                    |  | RESINITE          |  | FORM, COIL                   |  |
| MATERIAL           |  |                   |  | DRAWN <i>[Signature]</i>     |  |
| TYPE & TEMPER      |  | HEAT TREAT. SPEC. |  | CHECKED <i>[Signature]</i>   |  |
| FINISH & SPEC. NO. |  |                   |  | FINAL APPROVAL               |  |
|                    |  |                   |  | CF-130                       |  |

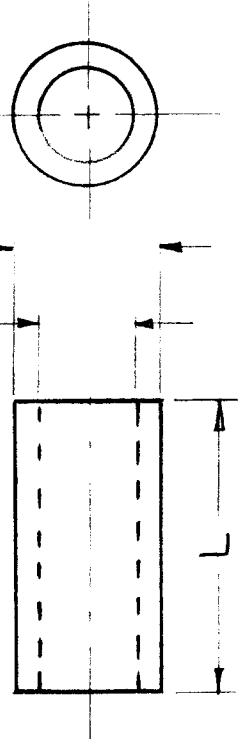
SCALE:  
 MAXIMUM ALLOWABLE TOLERANCES HAVE BEEN DETERMINED AND ANY DEVIATIONS WILL BE CAUSE FOR REJECTION.  
 REMOVE ALL BURRS AND SHARP EDGES

DEC. DIM. ±  
 FRAC. DIM. ±  
 ANGULAR DIM. ±

|                |       |                    |          |
|----------------|-------|--------------------|----------|
| REQ. PER. UNIT | MODEL | USED ON ASS'Y. NO. | DATE     |
|                |       | CF-131             | 10-24-60 |

$-.750 \pm .003$

$+.002$   
 $500 \pm .000$



CF-131 - 1.375

TMC PARTS, LENGTH IN INCHES  
Example = 1.375 = 1-3/8

| REQ. ITEM  | PART NO.          | DESCRIPTION                     | SYMBOL         |
|--|-------------------|---------------------------------|----------------|
|  |                   | THE TECHNICAL MATERIEL CORP.    |                |
|  |                   | MAMARONECK, NEW YORK            |                |
|  |                   | COIL FORM                       |                |
|  |                   | (3/4 O.D. x 1/2 I.D.)           |                |
| XXXP LAMINATE  |                   | DSW                             | APP            |
| TYPE & TEMPER  | HEAT TREAT. SPEC. | DRAWN                           | FINAL APPROVAL |
|  |                   | MM                              | CF-131         |
| ISSUE ITEM   | CHANGED FROM      |                                 |                |
| TOLERANCES   |                   |                                 |                |
| SCALE:   |                   |                                 |                |
| MAXIMUM ALLOWABLE TOLERANCES HAVE BEEN DETERMINED AND ANY DEVIATIONS WILL BE CAUSE FOR REJECTION. REMOVE ALL BURRS AND SHARP EDGES |                   |                                 |                |
| DEC. DIM. ±  |                   |                                 |                |
| FRAC. DIM. ±   |                   |                                 |                |
| ANGULAR DIM. ±   |                   |                                 |                |
|  |                   | ELEC. DES. APP. MECH. DES. APP. |                |



|               |         |           |
|---------------|---------|-----------|
| REQ. PER UNIT | USED ON | DATE      |
| 2             | MODEL   | ASSY. NO. |
|               | GPR-92  | A-2138    |
|               |         | 10-25-63  |

CF-132 A

TMC PART NO. SHALL BE IN THE FOLLOWING FORM:

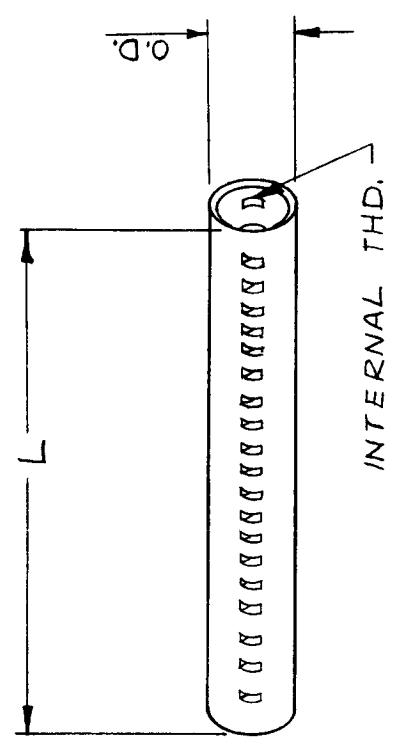
CF-132-1000-R-0832

BASIC TMC P/N

MATERIAL R- RESINITE 8104 M- MYLAR

LENGTH "L" IN INCHES TOL. .5% LENGTHS AVAILABLE .375-2.000

THD. SIZE



TYP. SPECIFICATIONS-

DIELECTRIC CONSTANT- 3.32 @ 1MC  
 POWER FACTOR- .0312 @ 1MC  
 DIELECTRIC STRENGTH- 200V/MIL  
 MOISTURE ABSORPTION- 2.86%  
 VOLUME RESISTIVITY- 1.2X10<sup>12</sup> OHM CM  
 TEMP. RATING- CLASS A  
 MELTING POINT- 250°C  
 SHRINKAGE- 2% @ 150°C

MATERIAL "M" MATERIAL "R"

3150V/MIL  
 0.6%  
 CLASS B  
 250°C  
 2% @ 150°C

THD. SIZE O.D.

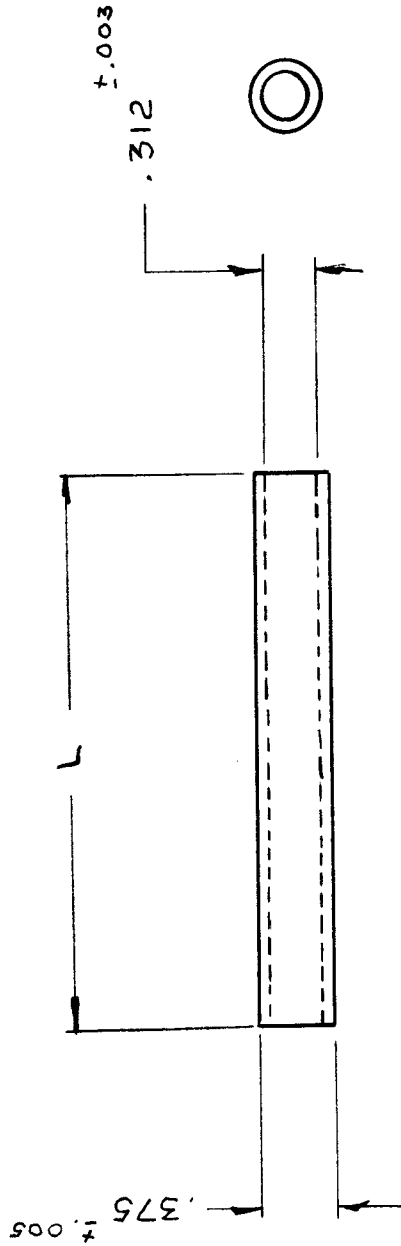
1/4-28 .283  
 10-32 .218  
 8-32 .187  
 6-32

|           |                  |  |                |
|-----------|------------------|--|----------------|
| REQ. ITEM | PART NO.         | GELLMAN DESCRIPTION                                  | SYMBOL         |
|           |                  | THE TECHNICAL MATERIEL CORP.<br>MAMARONECK, NEW YORK |                |
|           | SEE TMC PART NO. | FORM, COIL, THREADED<br>INTERNAL                     |                |
|           |                  | DRAWN  | FINAL APPROVAL |
|           |                  | CHECKER  |                |
|           |                  | DATE   |                |
|           |                  | CH. NO.  |                |
|           |                  | DRAFTS   |                |
|           |                  | CHECKER  |                |
|           |                  | ENG. APP.  |                |
|           |                  | SCALE  |                |
|           |                  | CODE   |                |
|           |                  | TOLERANCES   |                |
|           |                  | FRACTIONS  |                |
|           |                  | DECIMALS   |                |
|           |                  | UNLESS OTHERWISE SPECIFIED                           |                |
|           |                  | DIMENSIONS ARE IN INCHES AND INCLUDE                 |                |
|           |                  | CHEMICALLY APPLIED OR PLATED FINISHES                |                |
|           |                  | ANGLES   |                |
|           |                  | ± 1/64   |                |
|           |                  | ± .005   |                |
|           |                  | ± .005   |                |
|           |                  | FINISH & SPEC. NO.                                   |                |
|           |                  | S401-138   |                |
|           |                  | ELEC. DES. APP.                                      |                |
|           |                  | MECH. DES. APP.                                      |                |
|           |                  | CF-132   | A              |

# STANDARD DRAWING

CF-133

| REQ. PER. UNIT | MODEL  | USED ON ASSY. N. | DATE    |
|----------------|--------|------------------|---------|
| 1              | A-2100 |                  | 8-29-61 |
| 1              | A-3021 |                  |         |
| 1              | A-3031 |                  |         |
| 1              | A-3032 |                  |         |
| 1              | A-3033 |                  |         |



TYPE DESIGNATION TO BE IN FOLLOWING FORM:

CF-133-L  
 TYPE NO., LENGTH IN INCHES

EXAMPLE:

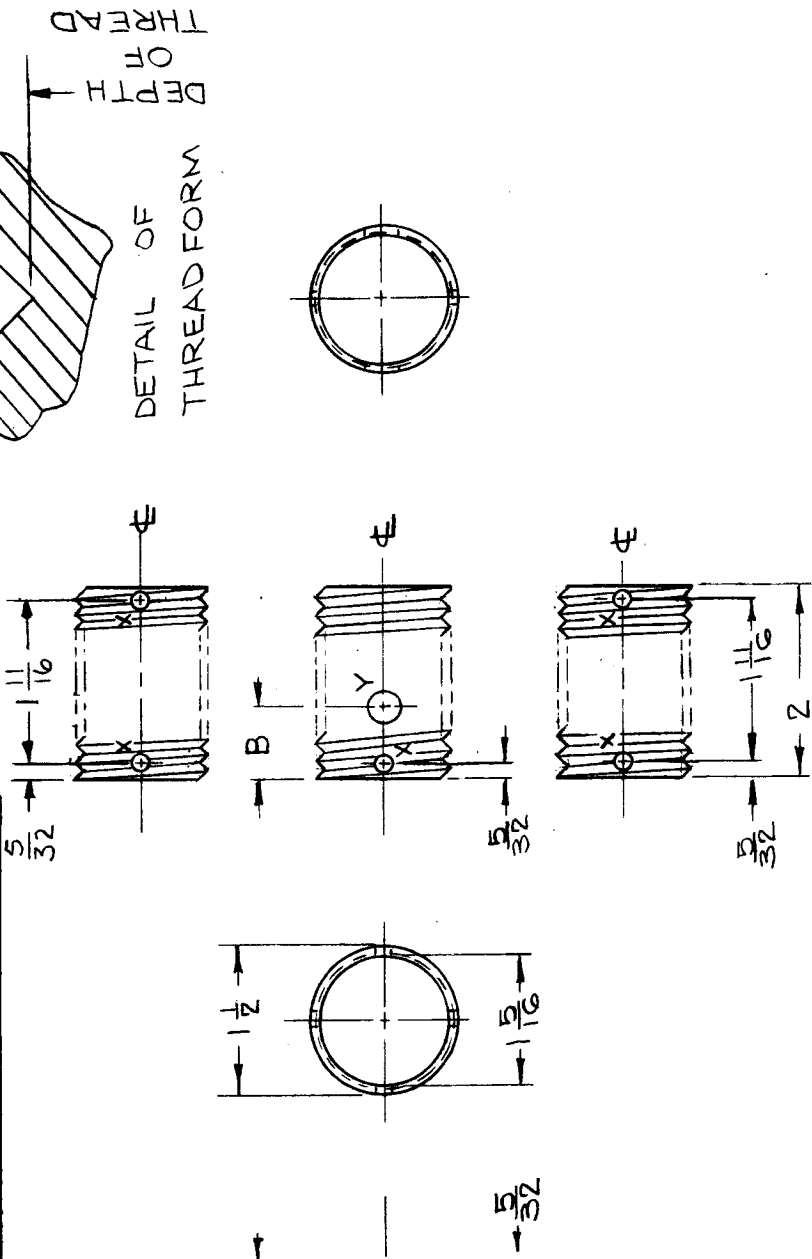
CF-133-1.5 = COIL FORM 1 1/2" LONG

CF-133-.75 = " 3/4"

REF: SYTHANE

| ISSUE ITEM   | CHANGED FROM | DATE | CH. NO. | DRAFTS | CHECKER | ENG. APP. | REG. ITEM | PART NO. | DESCRIPTION  | SYMBOL |
|--|--------------|------|---------|--------|---------|-----------|-----------|----------|--|--------|
| TOLERANCES   |              |      |         |        |         |           |           |          | THE TECHNICAL MATERIEL CORP.<br>MAMARONECK, NEW YORK |        |
| MAXIMUM ALLOWABLE TOLERANCES HAVE BEEN DETERMINED AND ANY DEVIATIONS WILL BE CAUSE FOR REJECTION. REMOVE ALL BURRS AND SHARP EDGES |              |      |         |        |         |           |           |          | COIL FORM, 3/8 O.D.<br>CUT TO SIZE                   |        |
| SCALE:   |              |      |         |        |         |           |           |          |  |        |
| MATERIAL   |              |      |         |        |         |           |           |          |  |        |
| PHENOLIC   |              |      |         |        |         |           |           |          |  |        |
| STOCK SIZE   |              |      |         |        |         |           |           |          |  |        |
| TYPE & TEMPER HEAT TREAT. SPEC.  |              |      |         |        |         |           |           |          |  |        |
| MIL-P-79 (PBG.)  |              |      |         |        |         |           |           |          |  |        |
| FINISH & SPEC. NO.   |              |      |         |        |         |           |           |          |  |        |
| XX   |              |      |         |        |         |           |           |          |  |        |
| DRAWN  |              |      |         |        |         |           |           |          |  |        |
| R. ROYCE<br>8-29-61  |              |      |         |        |         |           |           |          |  |        |
| CHECKED  |              |      |         |        |         |           |           |          |  |        |
| M.B.   |              |      |         |        |         |           |           |          |  |        |
| FIN. APPROVAL  |              |      |         |        |         |           |           |          |  |        |
| CF-133   |              |      |         |        |         |           |           |          |  |        |

| TMC PART NO. | MFR. PART NO. | DIMENSIONS |       | USED ON | THREADS PER INCH | DEPTH OF THREAD |
|--------------|---------------|------------|-------|---------|------------------|-----------------|
|              |               | A          | B     |         |                  |                 |
| CF 136-1     | 18.09-A       | 5/8        | 3/4   | TZ-120  | 14               | .025            |
| CF 136-2     | 18.09-B       | 1/2        | 21/32 | TZ-121  | 16               | .030            |
| CF 136-3     | 18.09-C       | 25/32      | 5/8   | TZ-122  | 8                | .040            |



*holder for  
 further change  
 MFG PT. NO.*

**HOLES**  
 X - 5/32 DIA. - 6 REQ.  
 Y - 5/16 DIA. - 2 REQ.

| REQ. UNIT | REQ. ITEM           | PART NO. | DESCRIPTION  | SYMBOL |
|-----------|---------------------|----------|--|--------|
|           | 1-1/2 OD, 1 5/16 ID |          | KOHN   |        |
|           | STOCK SIZE          |          | THE TECHNICAL MATERIEL CORP.<br>MAMARONECK. NEW YORK |        |
|           |                     |          | FORM, COIL, 1-1/2 OD                                 |        |
|           |                     |          | MATERIAL   |        |
|           |                     |          | PHENOLIC   |        |
|           |                     |          | XXX  |        |
|           |                     |          | TYPE & TEMPER  |        |
|           |                     |          | NATURAL  |        |
|           |                     |          | FINISH & SPEC. NO.                                   |        |
|           |                     |          | R KOHN   |        |
|           |                     |          | MECH. DES. APP.                                      |        |
|           |                     |          | R KOHN   |        |
|           |                     |          | ELEC. DES. APP.                                      |        |
|           |                     |          | MECH. DES. APP.                                      |        |
|           |                     |          | CF 136   |        |
|           |                     |          | FINAL APPROVAL                                       |        |
|           |                     |          | 10/18/63   |        |
|           |                     |          | 13P  |        |

UNLESS OTHERWISE SPECIFIED  
 DIMENSIONS ARE IN INCHES AND INCLUDE  
 CHEMICALLY APPLIED OR PLATED FINISHES

DECIMALS  
 .X ± .05  
 .XX ± .01  
 .XXX ± .005

FRACTIONS  
 ± 1/64  
 ANGLES  
 ± 0° 30'

SCALE  
 S-401-47

DATE  
 3-1-67

CH. NO.  
 17817

DRAFTS  
 RME

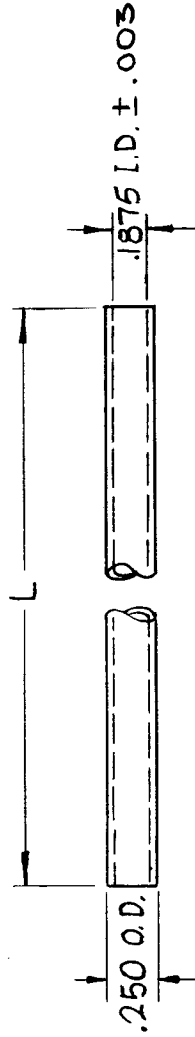
CHECKER  
 ENG. APP.

CODE  
 C

# STANDARD DRAWING

REQ. PER UNIT: \_\_\_\_\_  
 USED ON ASSY. NO.: \_\_\_\_\_ DATE: 7-8-64  
 MODEL: ST'D

CF137 A



NOMENCLATURE SHALL BE IN THE FOLLOWING FORM.

CF137 - L

TMC PART NO. LENGTH (IN INCHES)  
 (SEE EXAMPLES)

EXAMPLES:

CF137 - .75 = COIL FORM 3/4" LONG  
 CF137 - 1.75 = COIL FORM 1-3/4" LONG

| REQ. ITEM | PART NO. | DESCRIPTION   | SYMBOL |
|-----------|----------|---|--------|
| A         | 12875    | ±.003 ADDED TO I.D.   |        |
| Ø         | 9-9-64   | ORIGINAL RELEASE FOR PRODUCTION   |        |
| X         | 7-8-64   | EXPERIMENTAL RELEASE  |        |
| SYM       | DATE     | DESCRIPTION   | SYMBOL |
|           | 11-9-64  | UNLESS OTHERWISE SPECIFIED DIMENSIONS ARE IN INCHES AND INCLUDE CHEMICALLY APPLIED OR PLATED FINISHES |        |
|           | 9-9-64   | SCALE   |        |
|           | 7-8-64   | TOLERANCES  |        |
|           |          | FRACTIONS ± 1/64 ANGLES ± 0° 30'  |        |
|           |          | DECIMALS X ± .05 XX ± .01 XXX ± .005  |        |
|           |          | TYPE & TEMPER   |        |
|           |          | HEAT TREAT. SPEC.   |        |
|           |          | NATURAL   |        |
|           |          | FINISH & SPEC. NO.  |        |
|           |          | XXXP LAMINATE   |        |
|           |          | MATERIAL  |        |
|           |          | PHENOLIC  |        |
|           |          | STOCK SIZE  |        |
|           |          | THE TECHNICAL MATERIEL CORP. MAMARONECK. NEW YORK   |        |
|           |          | COIL FORM, .250 O.D.  |        |
|           |          | SRG   |        |
|           |          | DRAWN   |        |
|           |          | CHECKED   |        |
|           |          | FINAL APPROVAL  |        |
|           |          | 9/14/64   | CF137  |
|           |          | ELEC. DES. APP. MECH. DES. APP.   | A      |

REQ. PER UNIT

MODEL RFTA-1

USED ON

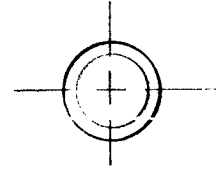
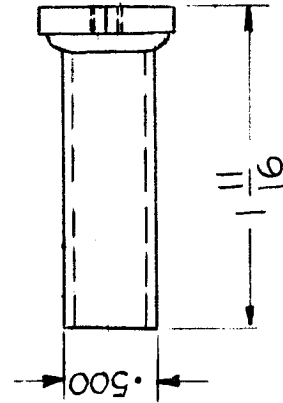
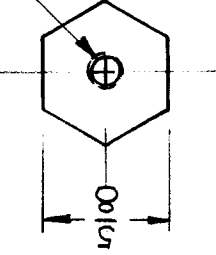
ABBY. NO. 6-16-65

DATE 6-16-65

CF138

Ø

DRILL & TAP FOR Ø-32

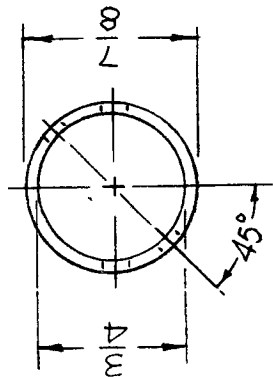
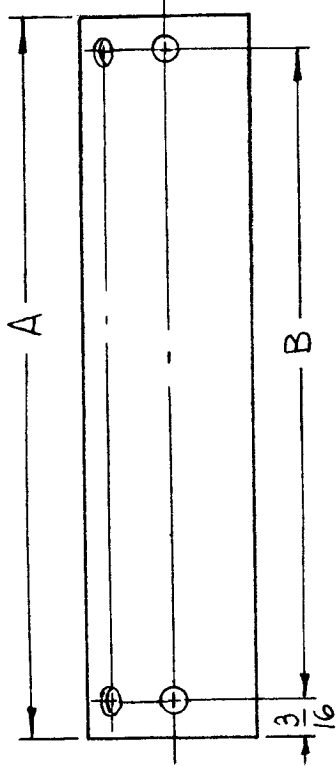


REF: MODIFY TMC # CF114-3

| REQ. ITEM    | PART NO. | DESCRIPTION   | SYMBOL |
|--------------|----------|---|--------|
| SEE REF NOTE |          | THE TECHNICAL MATERIEL CORP.<br>MAMARONECK.<br>NEW YORK |        |
| Ø            |          | FORM, COIL  |        |
| X1           |          | CERAMIC   |        |
| SYM          |          | MATERIAL  |        |
|              |          | TYPE & TEMPER   |        |
|              |          | HEAT TREAT. SPEC.                                       |        |
|              |          | FINISH & SPEC. NO.                                      |        |
|              |          | ELEC. DES. APP.   |        |
|              |          | MECH. DES. APP.   |        |
|              |          | FINAL APPROVAL  |        |
|              |          | DATE  |        |
|              |          | CHECKER   |        |
|              |          | ENG. APP.   |        |
|              |          | SCALE   |        |
|              |          | CODE  |        |
|              |          | TOLERANCES  |        |
|              |          | FRACTIONS   |        |
|              |          | DECIMALS  |        |
|              |          | ANGLES  |        |
|              |          | PLATED FINISHES   |        |
|              |          | INCLUDE   |        |
|              |          | INCHES  |        |
|              |          | SPECIFIED   |        |
|              |          | OTHERWISE   |        |
|              |          | UNLESS  |        |
|              |          | DESCRIPTION   |        |
|              |          | ADDED   |        |
|              |          | REF #   |        |
|              |          | PRODUCTION  |        |
|              |          | FOR   |        |
|              |          | RELEASE   |        |
|              |          | ORIGINAL  |        |
|              |          | DATE  |        |
|              |          | CH. NO.   |        |
|              |          | DRAFTS  |        |
|              |          | CHECKER   |        |
|              |          | ENG. APP.   |        |
|              |          | SCALE   |        |
|              |          | DATE  |        |
|              |          | CH. NO.   |        |
|              |          | DRAFTS  |        |
|              |          | CHECKER   |        |
|              |          | ENG. APP.   |        |
|              |          | SCALE   |        |
|              |          | CODE  |        |
|              |          | TOLERANCES  |        |
|              |          | FRACTIONS   |        |
|              |          | DECIMALS  |        |
|              |          | ANGLES  |        |
|              |          | PLATED FINISHES   |        |
|              |          | INCLUDE   |        |
|              |          | INCHES  |        |
|              |          | SPECIFIED   |        |
|              |          | OTHERWISE   |        |
|              |          | UNLESS  |        |
|              |          | DESCRIPTION   |        |
|              |          | ADDED   |        |
|              |          | REF #   |        |
|              |          | PRODUCTION  |        |
|              |          | FOR   |        |
|              |          | RELEASE   |        |
|              |          | ORIGINAL  |        |
|              |          | DATE  |        |
|              |          | CH. NO.   |        |
|              |          | DRAFTS  |        |
|              |          | CHECKER   |        |
|              |          | ENG. APP.   |        |
|              |          | SCALE   |        |
|              |          | CODE  |        |
|              |          | TOLERANCES  |        |
|              |          | FRACTIONS   |        |
|              |          | DECIMALS  |        |
|              |          | ANGLES  |        |
|              |          | PLATED FINISHES   |        |
|              |          | INCLUDE   |        |
|              |          | INCHES  |        |
|              |          | SPECIFIED   |        |
|              |          | OTHERWISE   |        |
|              |          | UNLESS  |        |
|              |          | DESCRIPTION   |        |
|              |          | ADDED   |        |
|              |          | REF #   |        |
|              |          | PRODUCTION  |        |
|              |          | FOR   |        |
|              |          | RELEASE   |        |
|              |          | ORIGINAL  |        |
|              |          | DATE  |        |
|              |          | CH. NO.   |        |
|              |          | DRAFTS  |        |
|              |          | CHECKER   |        |
|              |          | ENG. APP.   |        |
|              |          | SCALE   |        |
|              |          | CODE  |        |
|              |          | TOLERANCES  |        |
|              |          | FRACTIONS   |        |
|              |          | DECIMALS  |        |
|              |          | ANGLES  |        |
|              |          | PLATED FINISHES   |        |
|              |          | INCLUDE   |        |
|              |          | INCHES  |        |
|              |          | SPECIFIED   |        |
|              |          | OTHERWISE   |        |
|              |          | UNLESS  |        |
|              |          | DESCRIPTION   |        |
|              |          | ADDED   |        |
|              |          | REF #   |        |
|              |          | PRODUCTION  |        |
|              |          | FOR   |        |
|              |          | RELEASE   |        |
|              |          | ORIGINAL  |        |
|              |          | DATE  |        |
|              |          | CH. NO.   |        |
|              |          | DRAFTS  |        |
|              |          | CHECKER   |        |
|              |          | ENG. APP.   |        |
|              |          | SCALE   |        |
|              |          | CODE  |        |
|              |          | TOLERANCES  |        |
|              |          | FRACTIONS   |        |
|              |          | DECIMALS  |        |
|              |          | ANGLES  |        |
|              |          | PLATED FINISHES   |        |
|              |          | INCLUDE   |        |
|              |          | INCHES  |        |
|              |          | SPECIFIED   |        |
|              |          | OTHERWISE   |        |
|              |          | UNLESS  |        |
|              |          | DESCRIPTION   |        |
|              |          | ADDED   |        |
|              |          | REF #   |        |
|              |          | PRODUCTION  |        |
|              |          | FOR   |        |
|              |          | RELEASE   |        |
|              |          | ORIGINAL  |        |
|              |          | DATE  |        |
|              |          | CH. NO.   |        |
|              |          | DRAFTS  |        |
|              |          | CHECKER   |        |
|              |          | ENG. APP.   |        |
|              |          | SCALE   |        |
|              |          | CODE  |        |
|              |          | TOLERANCES  |        |
|              |          | FRACTIONS   |        |
|              |          | DECIMALS  |        |
|              |          | ANGLES  |        |
|              |          | PLATED FINISHES   |        |
|              |          | INCLUDE   |        |
|              |          | INCHES  |        |
|              |          | SPECIFIED   |        |
|              |          | OTHERWISE   |        |
|              |          | UNLESS  |        |
|              |          | DESCRIPTION   |        |
|              |          | ADDED   |        |
|              |          | REF #   |        |
|              |          | PRODUCTION  |        |
|              |          | FOR   |        |
|              |          | RELEASE   |        |
|              |          | ORIGINAL  |        |
|              |          | DATE  |        |
|              |          | CH. NO.   |        |
|              |          | DRAFTS  |        |
|              |          | CHECKER   |        |
|              |          | ENG. APP.   |        |
|              |          | SCALE   |        |
|              |          | CODE  |        |
|              |          | TOLERANCES  |        |
|              |          | FRACTIONS   |        |
|              |          | DECIMALS  |        |
|              |          | ANGLES  |        |
|              |          | PLATED FINISHES   |        |
|              |          | INCLUDE   |        |
|              |          | INCHES  |        |
|              |          | SPECIFIED   |        |
|              |          | OTHERWISE   |        |
|              |          | UNLESS  |        |
|              |          | DESCRIPTION   |        |
|              |          | ADDED   |        |
|              |          | REF #   |        |
|              |          | PRODUCTION  |        |
|              |          | FOR   |        |
|              |          | RELEASE   |        |
|              |          | ORIGINAL  |        |
|              |          | DATE  |        |
|              |          | CH. NO.   |        |
|              |          | DRAFTS  |        |
|              |          | CHECKER   |        |
|              |          | ENG. APP.   |        |
|              |          | SCALE   |        |
|              |          | CODE  |        |
|              |          | TOLERANCES  |        |
|              |          | FRACTIONS   |        |
|              |          | DECIMALS  |        |
|              |          | ANGLES  |        |
|              |          | PLATED FINISHES   |        |
|              |          | INCLUDE   |        |
|              |          | INCHES  |        |
|              |          | SPECIFIED   |        |
|              |          | OTHERWISE   |        |
|              |          | UNLESS  |        |
|              |          | DESCRIPTION   |        |
|              |          | ADDED   |        |
|              |          | REF #   |        |
|              |          | PRODUCTION  |        |
|              |          | FOR   |        |
|              |          | RELEASE   |        |
|              |          | ORIGINAL  |        |
|              |          | DATE  |        |
|              |          | CH. NO.   |        |
|              |          | DRAFTS  |        |
|              |          | CHECKER   |        |
|              |          | ENG. APP.   |        |
|              |          | SCALE   |        |
|              |          | CODE  |        |
|              |          | TOLERANCES  |        |
|              |          | FRACTIONS   |        |
|              |          | DECIMALS  |        |
|              |          | ANGLES  |        |
|              |          | PLATED FINISHES   |        |
|              |          | INCLUDE   |        |
|              |          | INCHES  |        |
|              |          | SPECIFIED   |        |
|              |          | OTHERWISE   |        |
|              |          | UNLESS  |        |
|              |          | DESCRIPTION   |        |
|              |          | ADDED   |        |
|              |          | REF #   |        |
|              |          | PRODUCTION  |        |
|              |          | FOR   |        |
|              |          | RELEASE   |        |
|              |          | ORIGINAL  |        |
|              |          | DATE  |        |
|              |          | CH. NO.   |        |
|              |          | DRAFTS  |        |
|              |          | CHECKER   |        |
|              |          | ENG. APP.   |        |
|              |          | SCALE   |        |
|              |          | CODE  |        |
|              |          | TOLERANCES  |        |
|              |          | FRACTIONS   |        |
|              |          | DECIMALS  |        |
|              |          | ANGLES  |        |
|              |          | PLATED FINISHES   |        |
|              |          | INCLUDE   |        |
|              |          | INCHES  |        |
|              |          | SPECIFIED   |        |
|              |          | OTHERWISE   |        |
|              |          | UNLESS  |        |
|              |          | DESCRIPTION   |        |
|              |          | ADDED   |        |
|              |          | REF #   |        |
|              |          | PRODUCTION  |        |
|              |          | FOR   |        |
|              |          | RELEASE   |        |
|              |          | ORIGINAL  |        |
|              |          | DATE  |        |
|              |          | CH. NO.   |        |
|              |          | DRAFTS  |        |
|              |          | CHECKER   |        |
|              |          | ENG. APP.   |        |
|              |          | SCALE   |        |
|              |          | CODE  |        |
|              |          | TOLERANCES  |        |
|              |          | FRACTIONS   |        |
|              |          | DECIMALS  |        |
|              |          | ANGLES  |        |
|              |          | PLATED FINISHES   |        |
|              |          | INCLUDE   |        |
|              |          | INCHES  |        |
|              |          | SPECIFIED   |        |
|              |          | OTHERWISE   |        |
|              |          | UNLESS  |        |
|              |          | DESCRIPTION   |        |
|              |          | ADDED   |        |
|              |          | REF #   |        |
|              |          | PRODUCTION  |        |
|              |          | FOR   |        |
|              |          | RELEASE   |        |
|              |          | ORIGINAL  |        |
|              |          | DATE  |        |
|              |          | CH. NO.   |        |
|              |          | DRAFTS  |        |
|              |          | CHECKER   |        |
|              |          | ENG. APP.   |        |
|              |          | SCALE   |        |
|              |          | CODE  |        |
|              |          | TOLERANCES  |        |
|              |          | FRACTIONS   |        |
|              |          | DECIMALS  |        |
|              |          | ANGLES  |        |
|              |          | PLATED FINISHES   |        |
|              |          | INCLUDE   |        |
|              |          | INCHES  |        |
|              |          | SPECIFIED   |        |
|              |          | OTHERWISE   |        |
|              |          | UNLESS  |        |
|              |          | DESCRIPTION   |        |
|              |          | ADDED   |        |
|              |          | REF #   |        |
|              |          | PRODUCTION  |        |
|              |          | FOR   |        |
|              |          | RELEASE   |        |
|              |          | ORIGINAL  |        |
|              |          | DATE  |        |
|              |          | CH. NO.   |        |
|              |          | DRAFTS  |        |
|              |          | CHECKER   |        |
|              |          | ENG. APP.   |        |
|              |          | SCALE   |        |
|              |          | CODE  |        |
|              |          | TOLERANCES  |        |
|              |          | FRACTIONS   |        |
|              |          | DECIMALS  |        |
|              |          | ANGLES  |        |
|              |          | PLATED FINISHES   |        |
|              |          | INCLUDE   |        |
|              |          | INCHES  |        |
|              |          | SPECIFIED   |        |
|              |          | OTHERWISE   |        |
|              |          | UNLESS  |        |
|              |          | DESCRIPTION   |        |
|              |          | ADDED   |        |
|              |          | REF #   |        |
|              |          | PRODUCTION  |        |
|              |          | FOR   |        |
|              |          | RELEASE   |        |
|              |          | ORIGINAL  |        |
|              |          | DATE  |        |
|              |          | CH. NO.   |        |
|              |          | DRAFTS  |        |
|              |          | CHECKER   |        |
|              |          | ENG. APP.   |        |
|              |          | SCALE   |        |
|              |          | CODE  |        |
|              |          | TOLERANCES  |        |
|              |          | FRACTIONS   |        |
|              |          | DECIMALS  |        |
|              |          | ANGLES  |        |
|              |          | PLATED FINISHES   |        |
|              |          | INCLUDE   |        |
|              |          | INCHES  |        |
|              |          | SPECIFIED   |        |
|              |          | OTHERWISE   |        |
|              |          | UNLESS  |        |
|              |          | DESCRIPTION   |        |
|              |          | ADDED   |        |
|              |          | REF #   |        |
|              |          | PRODUCTION  |        |
|              |          | FOR   |        |
|              |          | RELEASE   |        |
|              |          | ORIGINAL  |        |
|              |          | DATE  |        |
|              |          | CH. NO.   |        |
|              |          | DRAFTS  |        |
|              |          | CHECKER   |        |
|              |          | ENG. APP.   |        |
|              |          | SCALE   |        |
|              |          | CODE  |        |
|              |          | TOLERANCES  |        |
|              |          | FRACTIONS   |        |
|              |          | DECIMALS  |        |
|              |          | ANGLES  |        |
|              |          | PLATED FINISHES   |        |
|              |          | INCLUDE   |        |
|              |          | INCHES  |        |
|              |          | SPECIFIED   |        |
|              |          | OTHERWISE   |        |
|              |          | UNLESS  |        |
|              |          | DESCRIPTION   |        |
|              |          | ADDED   |        |
|              |          | REF #   |        |
|              |          | PRODUCTION  |        |
|              |          | FOR   |        |
|              |          | RELEASE   |        |
|              |          | ORIGINAL  |        |
|              |          | DATE  |        |
|              |          | CH. NO.   |        |
|              |          | DRAFTS  |        |
|              |          | CHECKER   |        |
|              |          | ENG. APP.   |        |
|              |          | SCALE   |        |
|              |          | CODE  |        |
|              |          | TOLERANCES  |        |
|              |          | FRACTIONS   |        |
|              |          | DECIMALS  |        |
|              |          | ANGLES  |        |
|              |          | PLATED FINISHES   |        |
|              |          | INCLUDE   |        |
|              |          | INCHES  |        |
|              |          | SPECIFIED   |        |
|              |          | OTHERWISE   |        |
|              |          | UN  |        |

|               |           |           |        |      |          |
|---------------|-----------|-----------|--------|------|----------|
| REQ. PER UNIT | 7         | USED ON   | CF139  | Ø    |          |
| MODEL         | GPT-10KLF | ASSY. NO. | A 4099 | DATE | 12-22-65 |

HOLES:  
#27 DRILL (8 REQ.)



OPPOSITE SIDE  
SAME

|           |       |          |
|-----------|-------|----------|
| TMC P/N   | A     | B ± 1/64 |
| CF139 - 1 | 3-1/4 | 3        |
| CF139 - 2 | 3-3/4 | 3-3/8    |

OBSOLETE

|           |          |            |  |        |
|-----------|----------|------------|--|--------|
| REQ. ITEM | PART NO. | F. BUDETTI | DESCRIPTION  | SYMBOL |
|           |          |            | THE TECHNICAL MATERIEL CORP.<br>MAMARONECK. NEW YORK |        |
|           |          |            | FORM, COIL   |        |
|           |          |            | STOCK SIZE<br>PHENOLIC<br>LINEN BASE                 |        |
|           |          |            | MATERIAL<br>XXX P                                    |        |
|           |          |            | TYPE & TEMPER HEAT TREAT. SPEC.                      |        |
|           |          |            | S113 FUNGUS PROOFING                                 |        |
|           |          |            | FINISH & SPEC. NO.                                   |        |
|           |          |            |  | CF139  |
|           |          |            | DRAWN  |        |
|           |          |            | CHECKED  |        |
|           |          |            | FINAL APPROVAL                                       |        |
|           |          |            | ELEC. DES. APP. MECH. DES. APP.                      |        |
|           |          |            |  |        |

ORIGINAL RELEASE FOR  
PRODUCTION

CF139 - 1 OBSOLETE

UNLESS OTHERWISE SPECIFIED  
DIMENSIONS ARE IN INCHES AND INCLUDE  
CHEMICALLY APPLIED OR PLATED FINISHES

TOLERANCES  
DECIMALS  
.X ± .05  
.XX ± .01  
.XXX ± .005

CODE  
A

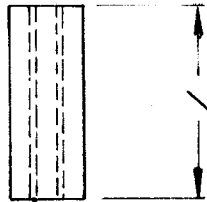
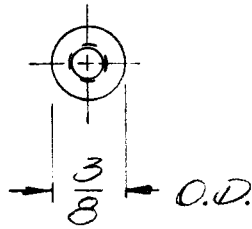
SCALE  
1:1

DATE  
3-7-66

CHECKER  
Jc

ENG. APP.  
Mk

| APPLICATION                        |               |           | REVISIONS |                                 |      |          |       |      |      |
|------------------------------------|---------------|-----------|-----------|---------------------------------|------|----------|-------|------|------|
| QTY                                | MODEL USED ON | ASS'Y NO. | LTR       | DESCRIPTION                     | DATE | E.M.N.NO | DRAFT | CHKD | APPD |
| 1                                  | GPR 110       | CL 484    |           | ORIGINAL RELEASE FOR PRODUCTION |      |          |       |      |      |
| <i>Original Release 1/15/77 GE</i> |               |           |           |                                 |      |          |       |      |      |



*DRILL & TAP THRU FOR 0832 TUD.*

MATERIAL: POLYSTYRENE (3/8 ROD)

FINISH: NATURAL

|   |                |      |                              |             |                 |         |       |
|---|----------------|------|------------------------------|-------------|-----------------|---------|-------|
| <small>UNLESS OTHERWISE SPECIFIED DIMENSIONS ARE IN INCHES AND INCLUDE CHEMICALLY APPLIED OR PLATED FINISHES</small><br><small>DECIMALS .X ± .05 .XX ± .01 .XXX ± .005</small><br><small>FRACTIONS 1/64</small><br><small>TOLS. ANGLES 0°-30°</small>   | REQ'D          | ITEM | PART NUMBER                  | DESCRIPTION | SYM.            |         |       |
|   | F.B.           |      | LIST OF MATERIAL             |             |                 |         |       |
| MATERIAL  | FINAL APPROVAL | DATE | THE TECHNICAL MATERIEL CORP. |             |                 |         |       |
| AS NOTED  | MECH. DES.     | DATE | MAMARONECK, NEW YORK         |             |                 |         |       |
| FINISH  | ELECT. DES.    | DATE | <i>COIL FORM</i>             |             |                 |         |       |
| AS NOTED  | CHECKED        | DATE |                              |             |                 |         |       |
|   | DRAWN          | DATE |                              |             |                 |         |       |
| <small>NOTICE TO PERSONS RECEIVING THIS DRAWING</small><br><small>THE TECHNICAL MATERIEL CORPORATION claims proprietary right in the material disclosed hereon. This drawing is issued in confidence for engineering information only and may not be reproduced or used to manufacture anything shown hereon without permission from THE TECHNICAL MATERIEL CORPORATION to the user. This drawing is loaned for mutual assistance and is subject to recall at any time.</small> |                |      |                              | SIZE        | CODE IDENT. NO. | DWG NO. | ISSUE |
|   |                |      |                              | A           | 82679           | CF 143  | 1     |
|   |                |      |                              | SCALE       | 1:1             | SHEET   | OF    |

# STANDARD DRAWING

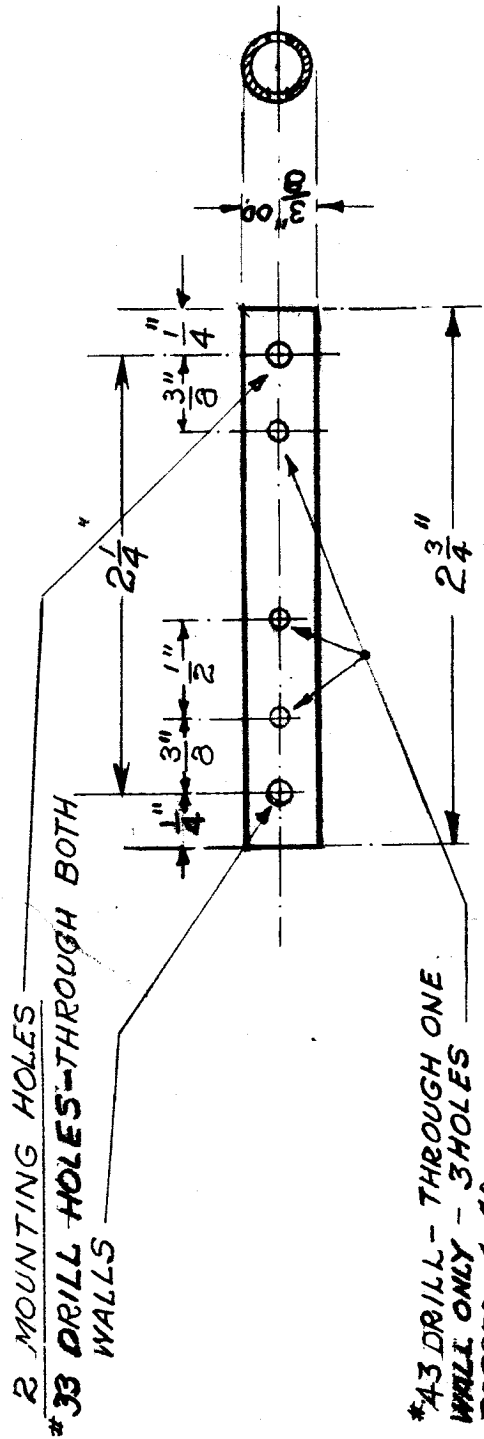
CF-10002A

IF IT IS FOUND DESIRABLE TO CHANGE ANY TOLERANCE OR OTHER DETAIL SPECIFIED ON THIS DRAWING NOTIFY THE PURCHASER PROMPTLY.

MAXIMUM ALLOWABLE TOLERANCES HAVE BEEN DETERMINED AND DEVIATIONS WILL BE CAUSE FOR REJECTION. REMOVE ALL BURRS AND SHARP EDGES

USED ON

|         |             |            |         |
|---------|-------------|------------|---------|
| MODEL   | PROJECT NO. | ASS'Y. NO. | DATE    |
| AMC6-2  |             |            | 21-3-55 |
| AMC6-10 |             |            |         |
| AMC6-3  |             |            |         |



## NOTICE TO PERSONS RECEIVING THIS DRAWING

THE TECHNICAL MATERIEL CORPORATION claims proprietary right in the material disclosed hereon. This drawing is issued in confidence for engineering information only and may not be reproduced or used to manufacture anything shown hereon without permission from THE TECHNICAL MATERIEL CORPORATION to the user. This drawing is loaned for mutual assistance and is subject to recall at any time.

Property of:

THE TECHNICAL MATERIEL CORPORATION  
MAMARONECK, NEW YORK

|      |                   |        |         |        |         |           |
|------|-------------------|--------|---------|--------|---------|-----------|
| ITEM | CHANGED FROM      | DATE   | CN. NO. | DRAFTS | CHECKER | ENG. APP. |
| 1/A  | *43 DRILL WAS #35 | 2/8/57 |         | BS     | L.M.    | ML        |

TOLERANCES

DEC. DIM.  $\pm \frac{1}{16}$   
 FRAC. DIM.  $\pm \frac{1}{64}$   
 ANGULAR DIM.  $\pm 1'$

DRILL, PUNCH, COMMERCIAL STOCK SIZES AND MANUFACTURERS TOLERANCES ARE NOT INCLUDED.

REF: DIAMOND STATE FIBRE

|  |                |                                |          |
|--|----------------|--------------------------------|----------|
| REQ. ITEM  | PART NO.       | DESCRIPTION                    | SYMBOL   |
| $3 \frac{3}{8} \phi \times 2 \frac{3}{4} \text{ long}$ |                | TMC (Canada) LIMITED<br>OTTAWA |          |
| BAKELITE TUBING  |                | AMC6 - 2 & 3                   |          |
| MATERIAL   | WEIGHT PER PC. | COIL FORM - RF                 |          |
| TYPE & TEMPER  |                | EWB.G                          |          |
| HEAT TREAT. SPEC.                                      |                | DRAWN                          |          |
| FINISH & SPEC. NO.                                     |                | CHECKED                        |          |
|  |                | ELEC. DES. APP.                |          |
|  |                | MECH. DES. APP.                |          |
|  |                | FINAL APPR VAL                 |          |
|  |                | (DL-10001)                     | CF-10002 |



IF IT IS FOUND DESIRABLE TO CHANGE ANY TOLERANCE OR OTHER DETAIL SPECIFIED ON THIS DRAWING NOTIFY THE PURCHASER PROMPTLY.

MAXIMUM ALLOWABLE TOLERANCES HAVE BEEN DETERMINED AND DEVIATIONS WILL BE CAUSE FOR REJECTION. REMOVE ALL BURRS AND SHARP EDGES

# STANDARD DRAWING

CF-10006

USED ON

|       |             |            |      |
|-------|-------------|------------|------|
| MODEL | PROJECT NO. | ASS'Y. NO. | DATE |
|-------|-------------|------------|------|

AMC-6-2  
AMC-6-3

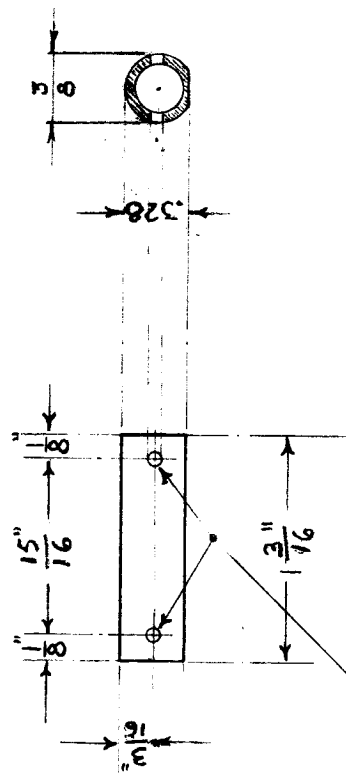
10/6/55

## NOTICE TO PERSONS RECEIVING THIS DRAWING

THE TECHNICAL MATERIEL CORPORATION claims proprietary right in the material disclosed hereon. This drawing is issued in confidence for engineering information only and may not be reproduced or used in manufacture anything shown herein without permission from THE TECHNICAL MATERIEL CORPORATION to the user. This drawing is loaned for mutual assistance and is subject to recall at any time.

Property of:

THE TECHNICAL MATERIEL CORPORATION  
MAMARONECK, NEW YORK



2 MOUNTING HOLES  
#55 DRILL - THROUGH  
BOTH WALLS

REF:- DIAMOND STATE FIBRE

|                    |                |                                |        |
|--------------------|----------------|--------------------------------|--------|
| REQ. ITEM          | PART NO.       | DESCRIPTION                    | SYMBOL |
| BAKELITE TUBING    |                | TMC (Canada) LIMITED<br>OTTAWA |        |
| MATERIAL           | WEIGHT PER PC. | FORM COIL                      |        |
| TYPE & TEMPER      |                | TR 058/062/057                 |        |
| HEAT TREAT. SPEC.  |                | E.A.C.                         |        |
| FINISH & SPEC. NO. |                | CHECKED                        |        |
|                    |                | DRAWN                          |        |
|                    |                | ELEC. DES. APP.                |        |
|                    |                | MECH. DES. APP.                |        |
|                    |                | FINAL APPROVAL                 |        |
|                    |                | CF-10006                       |        |

|                   |   |      |         |        |         |           |
|-------------------|---|------|---------|--------|---------|-----------|
| ISSUE ITEM        | CHANGED FROM  | DATE | CN. NO. | DRAFTS | CHECKER | ENG. APP. |
| TOLERANCES        |   |      |         |        |         |           |
| DEC. DIM. ±       | SCALE   |      |         |        |         |           |
| FRAC. DIM. ± 1/64 | DRILL, PUNCH, COMMERCIAL STOCK SIZES AND MANUFACTURERS TOLERANCES ARE NOT INCLUDED. |      |         |        |         |           |
| ANGULAR DIM. ±    |   |      |         |        |         |           |

# STANDARD DRAWING

CF-10008

USED ON

DATE

ASSY. NO.

PROJECT NO.

MODEL

CL-10002 JUNE 24-55

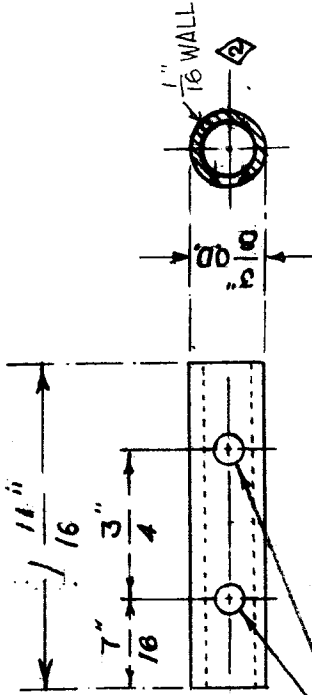
CL-10003 Aug 14, 1956

AMC6-2

AMC6-3

IF IT IS FOUND DESIRABLE TO CHANGE ANY TOLERANCE OR OTHER DETAIL SPECIFIED ON THIS DRAWING NOTIFY THE PURCHASER PROMPTLY.

MAXIMUM ALLOWABLE TOLERANCES HAVE BEEN DETERMINED AND DEVIATIONS WILL BE CAUSE FOR REJECTION. REMOVE ALL BURRS AND SHARP EDGES



2 HOLES - TAP FOR 4-40 MS

◇ ONE WALL ONLY

REF. DIAMOND STATE FIBRE

| REQ. ITEM | PART NO. | DESCRIPTION                    | SYMBOL                          |
|-----------|----------|--------------------------------|---------------------------------|
|           |          | TMC (Canada) LIMITED<br>OTTAWA |                                 |
|           |          | COIL FORM                      |                                 |
|           |          | AMC 6 - SERIE 3 2 & 3          |                                 |
|           |          | M.A.C.                         |                                 |
|           |          | DRAWN                          | ELEC. DES. APP. MECH. DES. APP. |
|           |          | T.H.                           |                                 |
|           |          | CHECKED                        | FINAL APPROVAL                  |
|           |          | CL-10 002                      | CF-10008                        |
|           |          | CL-10 003                      |                                 |

| REQ. ITEM | PART NO. | STOCK SIZE          | MATERIAL       | TYPE & TEMPER | HEAT TREAT. SPEC. | FINISH & SPEC. NO. |
|-----------|----------|---------------------|----------------|---------------|-------------------|--------------------|
| 3         |          | OD. BAKELITE TUBING | 1/8" WALL      |               |                   |                    |
|           |          |                     | WEIGHT PER FT. |               |                   |                    |

| ISSUE | ITEM | CHANGED FROM      | DATE    | CN. NO. | DRAFTS | CHECKER | ENG. APP. |
|-------|------|-------------------|---------|---------|--------|---------|-----------|
| A     | 2    | SECTION CORRECTED |         |         |        |         |           |
|       | 1    | "ONE WALL ONLY"   | 25/8/55 |         | EG     |         |           |

| TOLERANCES     |                                |
|----------------|--------------------------------|
| DEC. DIM. ±    | DRILL, PUNCH, COMMERCIAL STOCK |
| FRAC. DIM. ±   | SIZES AND MANUFACTURERS        |
| ANGULAR DIM. ± | TOLERANCES ARE NOT INCLUDED.   |





IF IT IS FOUND DESIRABLE TO CHANGE ANY TOLERANCE OR OTHER DETAIL SPECIFIED ON THIS DRAWING NOTIFY THE PURCHASER PROMPTLY.

MAXIMUM ALLOWABLE TOLERANCES HAVE BEEN DETERMINED AND DEVIATIONS WILL BE CAUSE FOR REJECTION. REMOVE ALL BURRS AND SHARP EDGES

CF10014

USED ON

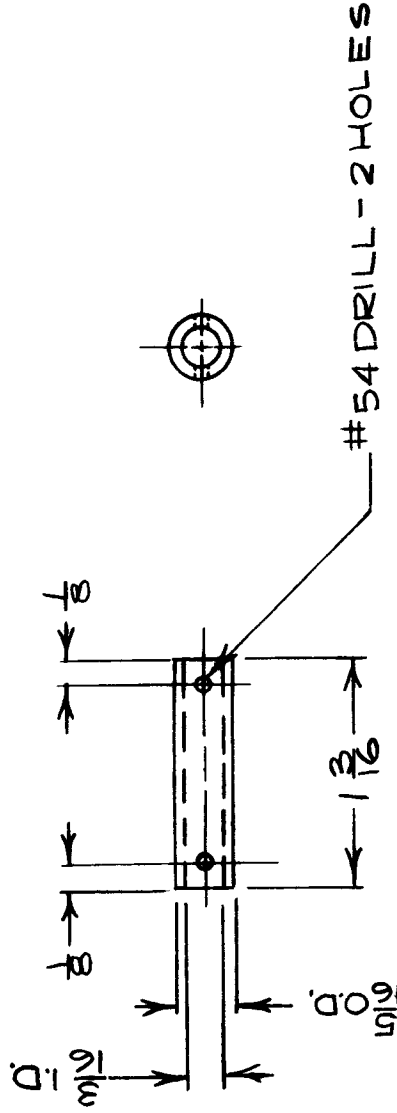
MODEL

PROJECT NO.

ASS'Y. NO.

DATE

NOV 23/60



NOTICE TO PERSONS RECEIVING THIS DRAWING

THE TECHNICAL MATERIEL CORPORATION claims proprietary right in the material disclosed hereon. This drawing is issued in confidence for engineering information only and is not to be reproduced or used to manufacture any part shown hereon without permission from THE TECHNICAL MATERIEL CORPORATION to the user. A patent may be granted for mutual assistance and is subject to change at any time.

Property of:

THE TECHNICAL MATERIEL CORPORATION  
MANHATTANECK, NEW YORK

| REQ. ITEM          | PART NO.                           | DESCRIPTION                            | SYMBOL  |
|--------------------|------------------------------------|--|---------|
| 3 X PHENOLIC       | 2 1/16 ID X 5 1/16 OD X 1 3/16 LG. | TMC (Canada) LIMITED<br>OTTAWA ONTARIO |         |
| MATERIAL           | STOCK SIZE                         | FORM - COIL MTG.                       |         |
| TYPE & TEMPER      | WEIGHT PER PC.                     | TRANSFORMER                            |         |
| HEAT TREAT. SPEC.  |                                    | JPC                                    |         |
| FINISH & SPEC. NO. |                                    | DRAWN                                  |         |
|                    |                                    | CHECKED                                |         |
|                    |                                    | ELEC. DES.                             |         |
|                    |                                    | MECH. DES. APP.                        |         |
|                    |                                    | FINAL APPROVAL                         |         |
|                    |                                    |  | CF10014 |

| ISSUE                          | ITEM           | CHANGED FROM | DATE | CN. NO. | DRAFTS | CHECKER | ENG. APP. |
|--------------------------------|----------------|--------------|------|---------|--------|---------|-----------|
| SCALE                          |                |              |      |         |        |         |           |
| DIMENSIONS IN INCHES           |                |              |      |         |        |         |           |
| UNLESS OTHERWISE SPECIFIED     |                |              |      |         |        |         |           |
| DRILL, PUNCH, COMMERCIAL STOCK |                |              |      |         |        |         |           |
| SIZES AND MANUFACTURERS        |                |              |      |         |        |         |           |
| TOLERANCES ARE NOT INCLUDED.   |                |              |      |         |        |         |           |
| TOLERANCES                     |                |              |      |         |        |         |           |
| ALL                            | DEC. DIM. ±    |              |      |         |        |         |           |
| OTHERS                         | FRAC. DIM. ±   |              |      |         |        |         |           |
|                                | ANGULAR DIM. ± |              |      |         |        |         |           |