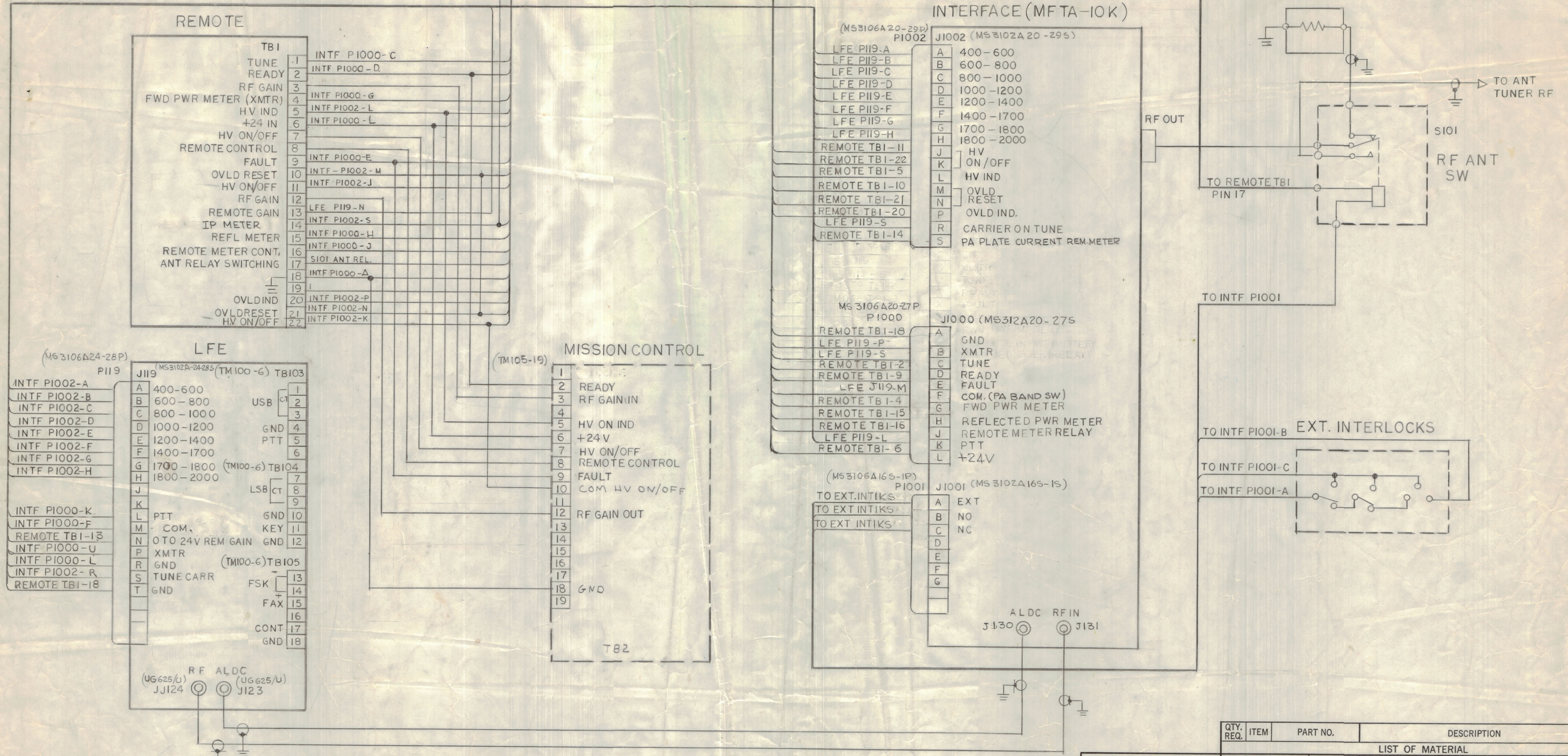
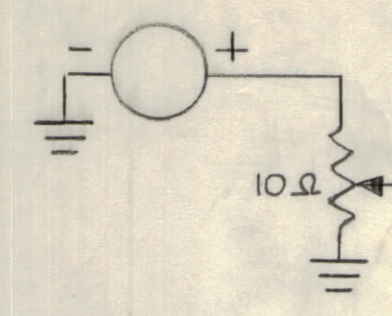


REVISIONS							
E.M.N.O.	DRAFT	CHKD	ZONE	LTR	DESCRIPTION	DATE	APPROVED
GDL				X1	CONNECT TO J1000 ON INTF ADD.	10-17-78	
				X2	ON J1000 PINE DEM CLARIF.	12-20-78	
				X3	J1000-A GND WAS TO TB1-11 MOVED TO TB1-18. J1000 PINE WAS TO TB1-6 MOVED TO LFE J119-M. J1000 P L WAS GND NOW 12V MOVED TO TB1-6 - ADD JUMPER TB1-10 TO TB1-21 ADD NEW LINE FROM TB1-22 TO MISSION CONTROL TB2-10	12-28-78	
GDL				X4	CONNECTIONS AT PIN 14 OF TB1 TO METER ADD	1-31-79	

100MA METER



QTY. REQ.	ITEM	PART NO.	DESCRIPTION	SYMBOL
LIST OF MATERIAL				
FINAL APPROVAL: [Signature] DATE: 9-8-78				
MECH. DES. DATE:				
ELECT. DES. DATE:				
CHECKED DATE:				
DRAWN: GDL DATE: 9-8-78				
THE TECHNICAL MATERIEL CORP. MAMARONECK, NEW YORK				
INTERCONNECT WIRING DIAGRAM MF SYSTEM				
MATERIAL FINISH				
SIZE CODE IDENT NO. DWG NO. ISSUE				
D 82679 CK2208				
SCALE SHEET OF				

QTY / UNIT	LOCKEED	MODEL USED ON	ASS'Y NO.
APPLICATION			
CODE			
NOTICE TO PERSONS RECEIVING THIS DRAWING			
THE TECHNICAL MATERIEL CORPORATION claims proprietary right in the material disclosed herein. This drawing is issued in confidence for engineering information only and may not be reproduced or used to manufacture anything shown hereon without permission from THE TECHNICAL MATERIEL CORPORATION to the user. This drawing is loaned for mutual assistance and is subject to recall at any time.			

CK2208