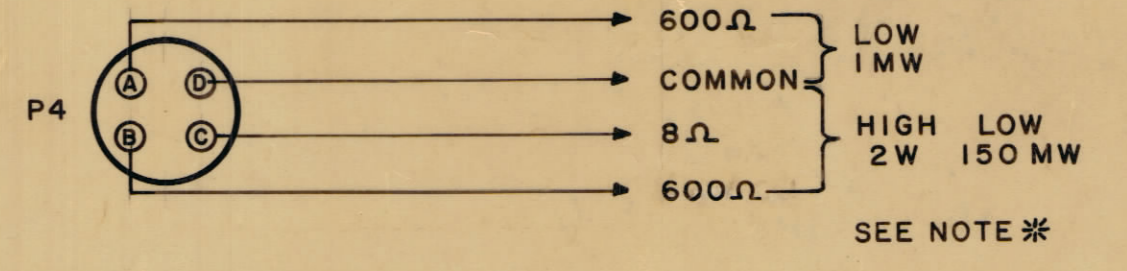
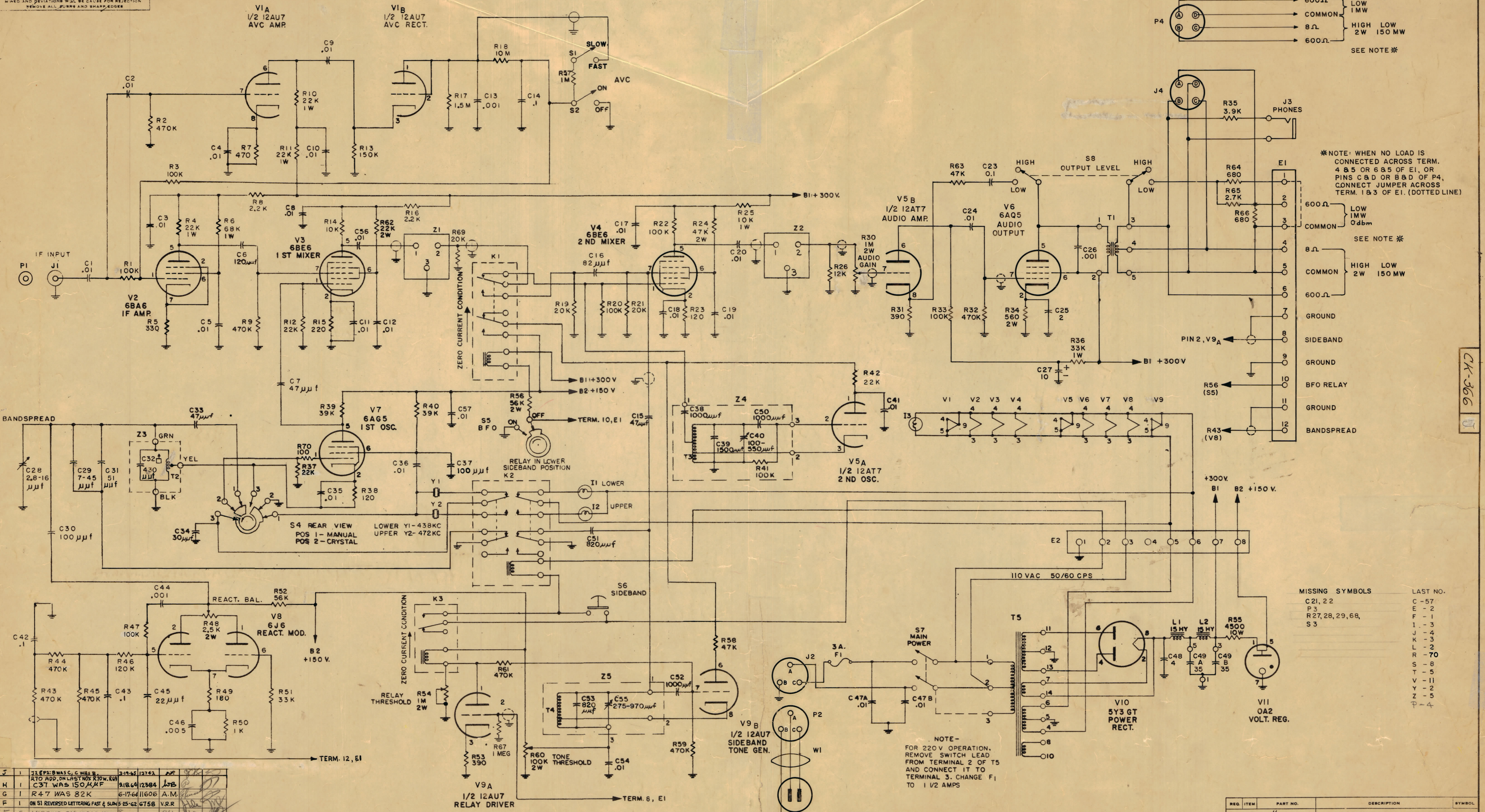


IF IT IS FOUND NECESSARY TO CHANGE ANY TOLERANCE OR OTHER DETAIL SPECIFIED ON THIS DRAWING NOTIFY THE PURCHASER BY MAIL.  
 MAXIMUM ALLOWABLE TOLERANCES HAVE BEEN DETERMINED AND DEVIATIONS WILL BE CAUSE FOR REJECTION. REMOVE ALL BURRS AND SHARP EDGES.



\*NOTE: WHEN NO LOAD IS CONNECTED ACROSS TERM. 4 & 5 OR 6 & 5 OF E1, OR PINS C & D OR B & D OF P4, CONNECT JUMPER ACROSS TERM. 1 & 3 OF E1. (DOTTED LINE)

MISSING SYMBOLS LAST NO.

C21, 22	C-57
P3	E-2
R27, 28, 29, 68, S3	F-1
	I-3
	J-4
	K-3
	L-2
	R-70
	S-8
	T-5
	V-11
	Z-5
	P-4

NOTE: UNLESS OTHERWISE NOTED, CAPACITORS ARE IN  $\mu$ fd UNLESS OTHERWISE NOTED, RESISTORS ARE 1/2 WATT

J	1	2282: B W A S C, C W A L B	3-9-54	13742	APR	OK	
H	1	R70 ADD. DIALYST NOS. 10W, K19	8-18-64	12384	LOB	OK	
G	1	R47 WAS 82K	6-17-64	11606	A.M.	OK	
F	1	ON S1 REVERSED LETTERING FAST & SLOW	5-25-62	6758	V.R.R.	OK	
E	5	MISSING SYMBOLS ADDED	8-11-60		ELL	OK	
D	4	R42 WAS 2.2K	11-15-57		MLL	OK	
C	3	R1 WAS 390K	11-15-58		MLL	OK	
B	2	C53 WAS 100 $\mu$ fd	4-6-61		MLL	OK	
A	1	C51 WAS 680 $\mu$ fd	11-15-57		MLL	OK	
		SWITCH REVISED TO AGREE WITH DETAIL	4-5-62		MLL	OK	
ISSUE	ITEM	CHANGED FROM	DATE	CH. NO.	DRAFTS	CHECKER	ENG. APP.
TOLERANCES		SCALE:					
ALL	DEC. DIM. $\pm$	DRILL PUNCH COMMERCIAL STOCK					
OTHERS	FRAC. DIM. $\pm$	SIZES AND MANUFACTURERS					
	ANGULAR DIM. $\pm$	TOLERANCES ARE NOT INCLUDED					

REQ PER UNIT	MSR-4	PROJECT NO.	6-24-58	DATE	6-24-58
MODEL		USED ON			

REQ. ITEM	PART NO.	DESCRIPTION	SYMBOL
THE TECHNICAL MATERIEL CORP. MAMARONECK, NEW YORK			
SCHEMATIC DIAGRAM			
MSR-4			
6-24-58			
DRAWN: PDK			
ELEC. DES. APP.:			
MECH. DES. APP.:			
HEAT TREAT. SPEC.:			
CHECKED: [Signature]			
FINAL APPROVAL: [Signature]			
SEE CHG. REC. #435			
CK-366			

CK-366