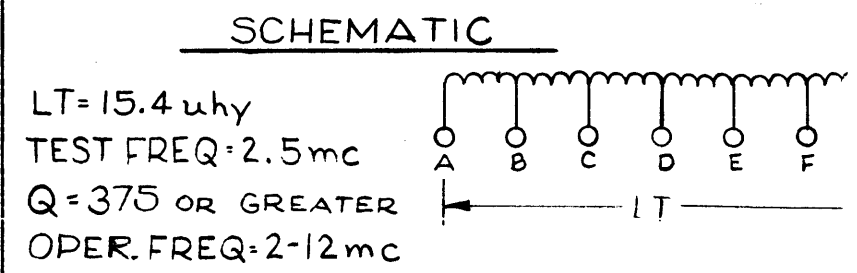
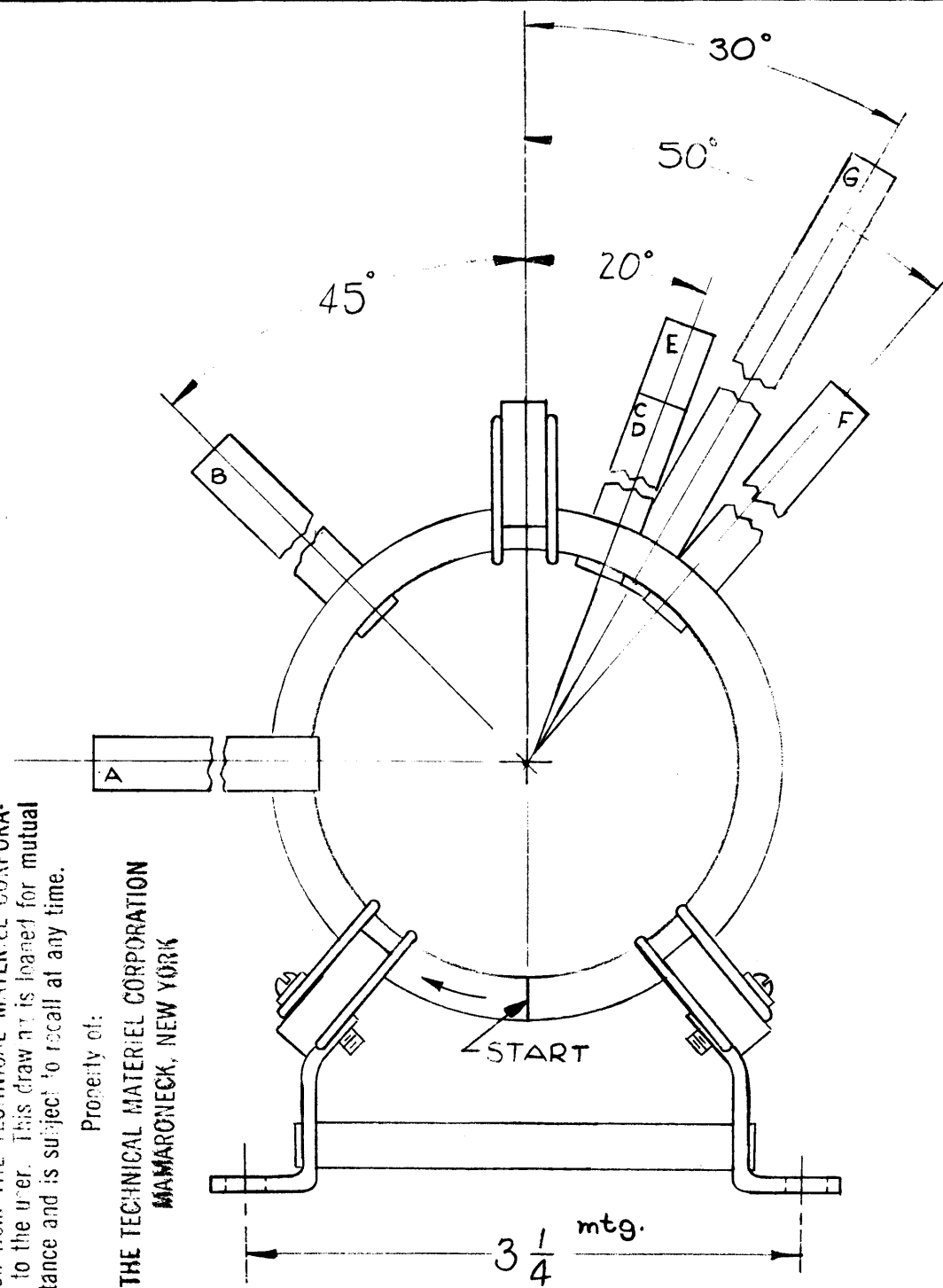
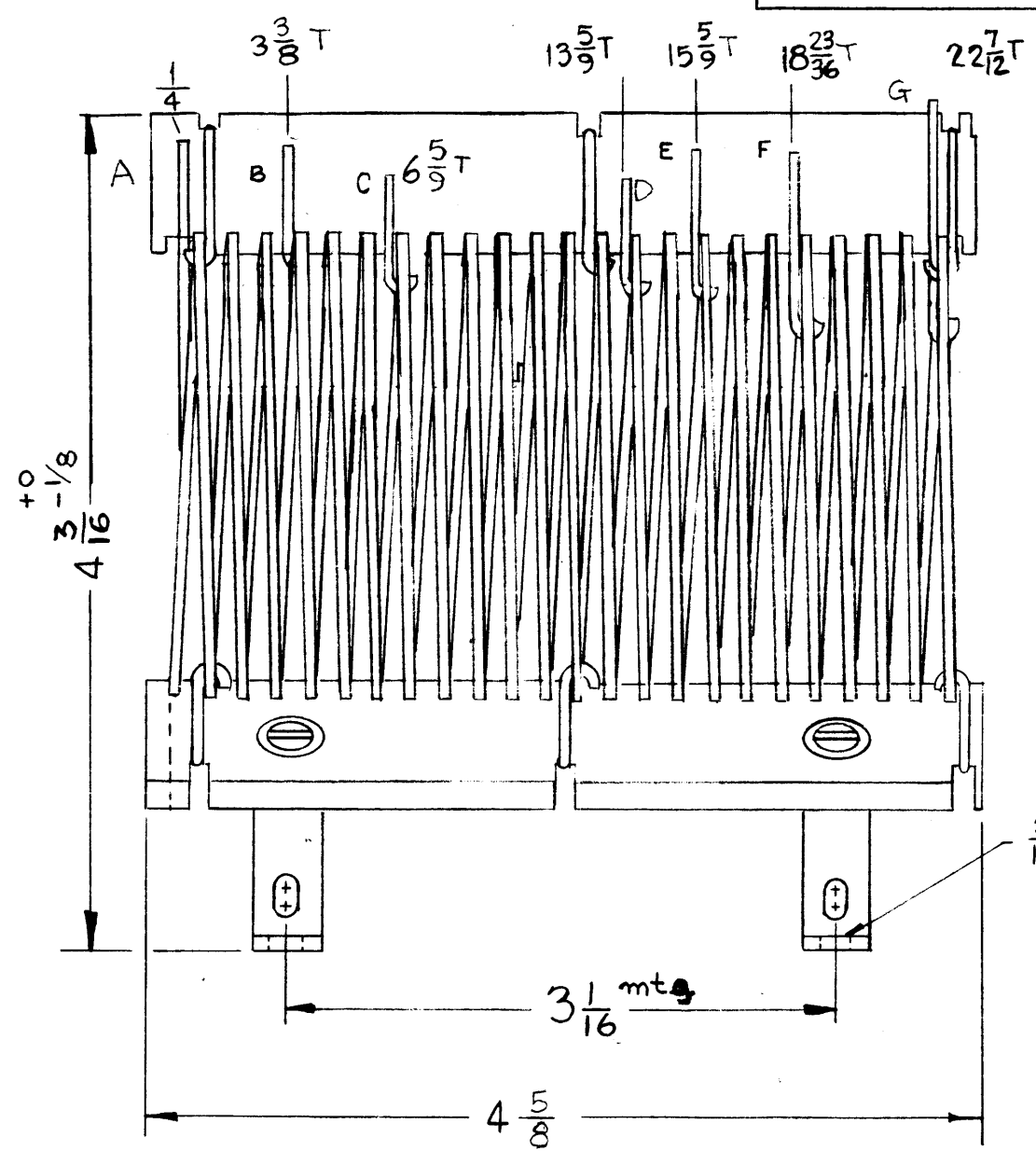


CL-174 G



SPECIFICATIONS

COIL ~ 3" O.D. x 2 1/2" I.D. COPPER STRIP. 23 TURNS C.W
 STRAPS ~ 5/16 WIDE x .025 THICK COPPER STRIPS
 SUPPORT BARS - GLASS BONDED MICA.
 FINISH ~ SILVER PLATE



3/16 DIA. 4 REQ.

REF~ EF JOHNSON CO.

NOTICE TO PERSONS RECEIVING THIS DRAWING

THE TECHNICAL MATERIEL CORPORATION claims proprietary right in the material disclosed hereon. This drawing is issued in confidence for engineering information only and may not be reproduced or used to manufacture anything shown hereon without permission from THE TECHNICAL MATERIEL CORPORATION to the user. This drawing is loaned for mutual assistance and is subject to recall at any time.

Property of:
 THE TECHNICAL MATERIEL CORPORATION
 MAMARONECK, NEW YORK

G	DIM. 4 3/16 +0 -1/8 WAS 4 3/16 +0 -1/16 CHG'D DIM. FR. 4 25/32 TO 4 5/8	8-9-66	16718	RME		
F	DIM 4 3/16 ± 0.016 WAS 4 5/16 ± 1/16	8-26-64	12233	MB		
E	4 - 25/32 DIM WAS 4 - 5/8	10-23-62	7434	ES		
D	DIRECTION OF WINDING CLARIFIED	5-15-62	6712	EE		
C	TURN NOTATIONS CLARIFIED	4-26-62	6507	EE		
B	PICTORIAL CLARIFIED	4-4-62	6588	EE		
A	4-5/16 DIM. WAS 4-5/8					
A	BAR #3 (TOP BAR) REVERSED	7-25-61	5310	R.J.		
SYM	DESCRIPTION	DATE	CH. NO.	DRAFTS	CHECKER	ENG. APP.

UNLESS OTHERWISE SPECIFIED:
 DIMENSIONS ARE IN INCHES
 TOLERANCES ON FRACTIONS ± 1/64 DECIMALS ± .005 ANGLES ± 1/2°

SCALE: 4 A-1727

MAXIMUM ALLOWABLE TOLERANCES HAVE BEEN DETERMINED AND ANY DEVIATIONS WILL BE CAUSE FOR REJECTION. REMOVE ALL BURRS AND SHARP EDGES

1	REQ. PER UNIT	RFD-1	MODEL	DAL-1K	SECTION	ASS'Y. NO.	12-27-60	DATE
USED ON								

REQ.	ITEM	PART NO.	DESCRIPTION	SYMBOL
		SEE SPEC.	THE TECHNICAL MATERIEL CORP. MAMARONECK, NEW YORK	
		STOCK SIZE		
		SEE SPEC.	TRANSFORMER, RF, FIXED, 2-12 MC	
		MATERIAL		
			R. UZZO	
		TYPE & TEMPER	HEAT TREAT. SPEC.	DRAWN
		SEE NOTES		CHECKER
		FINISH & SPEC. NO.	ELEC. DES. APP.	MECH. DES. APP.
				CL-174 G