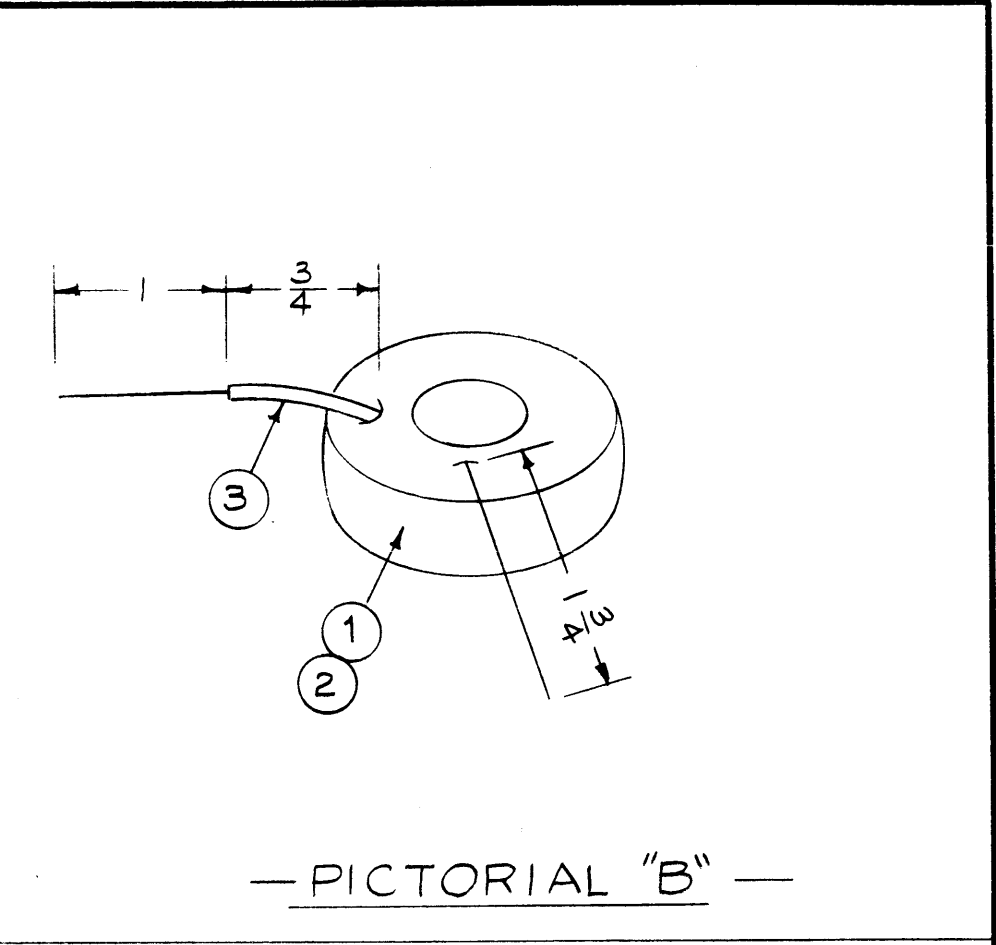
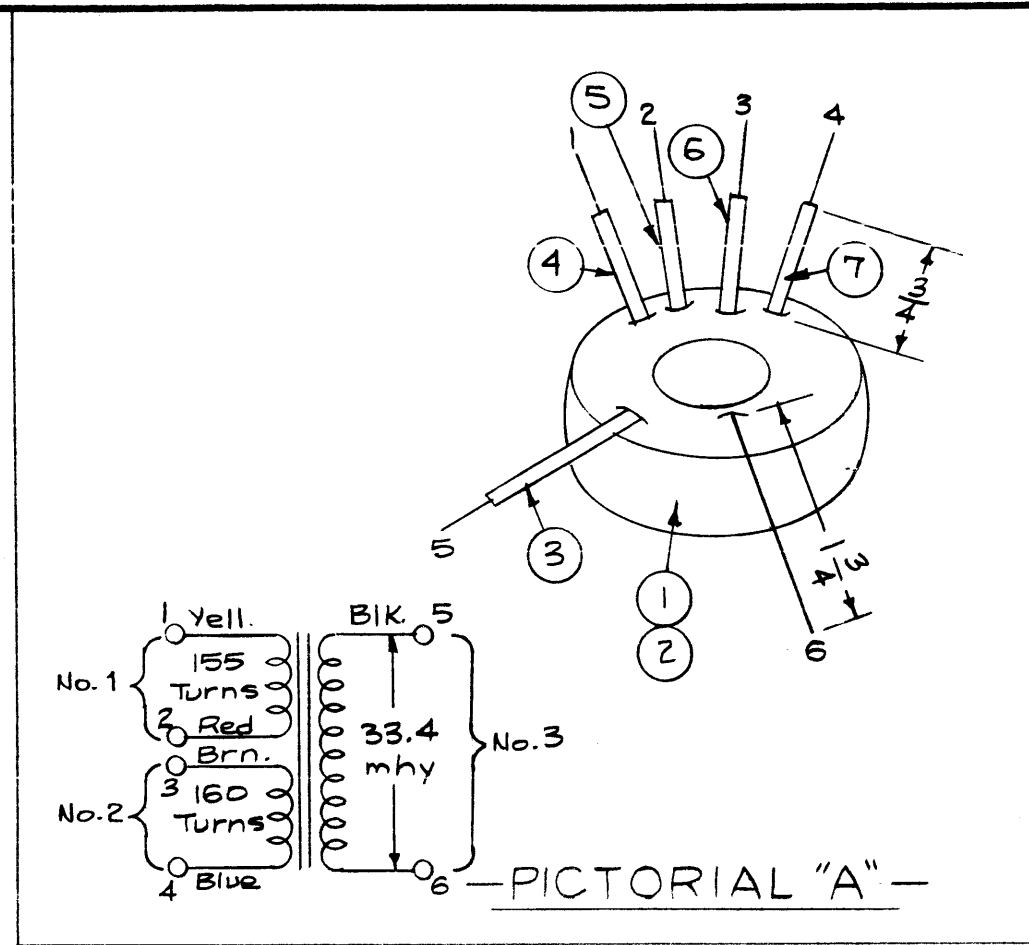


TMC NO.	INDUCTANCE (mhy.)	Q Greater Than	WIRE (ITEM 2)	APPROX LOAD TURNS	PICT.
CL-203-1	3 Windings 1. 155 Turns 2. 160 Turns 3. 33.4 mhy	— — 15	WI-123-33	1. 15 2. 15 3. 46	A
CL-203-2	17.8	15	WI-123-30	35	B
CL-203-3	11.9	15	WI-123-29	29	B
CL-203-4	16.6	15	WI-123-30	34	B
CL-203-5	36.0	15	WI-123-32	53	B
CL-203-6	12.4	15	WI-123-29	31	B
CL-203-7	11.3	15	WI-123-29	28	B
CL-203-8	35.3	15	WI-123-32	50	B
CL-203-9	32.0	15	WI-123-32	47	B
CL-203-10	26.0	15	WI-123-31	42	B

CL-203

— WINDING DATA —

- Wind all coils to the inductance specified, except CL-203-1, which will be wound as follows:
 - winding No. 1 - 155 turns.
 - winding No. 2 - 160 turns.
 - Remove toroid from the ring and balance these two windings.
 - Wind winding No. 3 to 33.4 mhy.
- Bake for 1/2 hour at 215° F.
- Submerge hot coil in item 8.
- Ref - TMC SPEC. S-337



See TMC Spec. S-337 for use of item 9 -

NOTICE TO PERSONS RECEIVING THIS DRAWING
 THE TECHNICAL MATERIEL CORPORATION claims proprietary right in the material disclosed hereon. This drawing is issued in confidence for engineering information only and may not be reproduced or used to manufacture anything shown hereon without permission from THE TECHNICAL MATERIEL CORPORATION to the user. This drawing is loaned for mutual assistance and is subject to recall at any time.

Property of:
 THE TECHNICAL MATERIEL CORPORATION
 100 MAROON LANE, NEW YORK

REQ. ITEM	PART NO.	DESCRIPTION	SYMBOL
X 9	PX-104-1-.022	Insulation, Sleeving	BIK.
X 8	GL-110	Wax, Impregnating	
X 7	LWC28(7)U-6	Cable, Insulated	Blue
X 6	LWC28(7)U-1		Brn.
X 5	LWC28(7)U-2		Red
X 4	LWC28(7)U-4		Yell.
X 3	LWC28(7)U-0	Cable, Insulated	BIK.
X 2	WI-123-XX	Wire, Magnet (See Chart)	
1 Ea.	CI-103-34	Core, Molybdenum	

STOCK SIZE		THE TECHNICAL MATERIEL CORP. MAMARONECK, NEW YORK	
MATERIAL		REACTOR, TOROIDAL (FX-155)	
TYPE & TEMPER	HEAT TREAT. SPEC.	DRAWN	CHECKED
FINISH & SPEC. NO.		ELEC. DES. APP.	MECH. DES. APP.

ISSUE ITEM	CHANGED FROM	DATE	CH. NO.	DRAFTS	CHECKER	ENG. APP.
TOLERANCES		SCALE: 1:1				
DEC. DIM. ±		MAXIMUM ALLOWABLE TOLERANCES HAVE BEEN DETERMINED AND ANY DEVIATIONS WILL BE CAUSE FOR REJECTION. REMOVE ALL BURRS AND SHARP EDGES				
FRAC. DIM. ±						
ANGULAR DIM. ±						

Each	FX-155	SBE-1	A-1426	6-6-57
REQ. PER UNIT	MODEL	PROJECT NO.	ASS'Y. NO.	DATE
USED ON				