

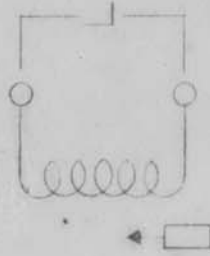
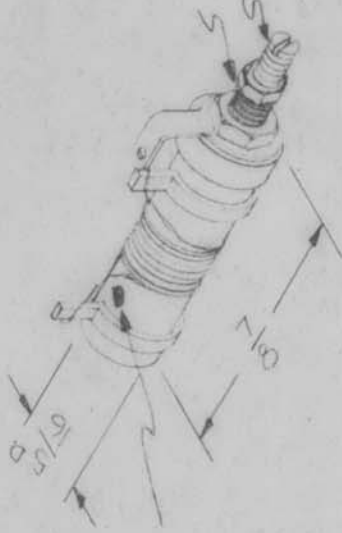
REQ. PER. UNIT	MODEL	USED ON	SYMBOL
Z	AO-101	ASS'Y. NO. AO-102	CL-205 B
		DATE	

ELECT. SPECS.

Total Ind - .29 - .34 wht
 Q at test Freq - 90 or Greater
 Freq. (Test) - 25 mc
MECH. SPECS.

Wire - #30 Magnet Wire
 Core - Powdered Iron
 Form - Phenolic

Color Code Dot
 (Brn.)



Hardware Supplied -

- One ea. 3-48 Hex Locking Nut } Brass,
- One ea. 8-32 Hex Mtg. Nut } Nickel
- One ea. #8 Internal Lockwasher } Plat

REQ. ITEM	PART NO.	DESCRIPTION	SYMBOL
B	Q WAS 100	THE TECHNICAL MATERIEL CORP. MAMARONECK, NEW YORK	
A 2	Q WAS 115	COIL, RF, TUNED, 32 & 34 mc	
ISSUE/ITEM	CHANGED FROM	DRAWN	CHECKED
	TOLERANCES	TYPE & TEMPER	HEAT TREAT. SPEC.
		FINISH & SPEC. NO.	FLEC. DES APP MECH. DES. APP.
		FINAL APPROVAL	
		CL-205 B	