

REQ. PER UNIT	MODEL	USED ON ASSY. NO.	DATE
	AO-101	A0-102	

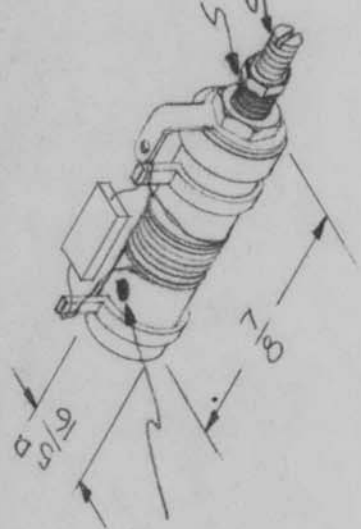
CL-210 B

ELECT. SPECS.

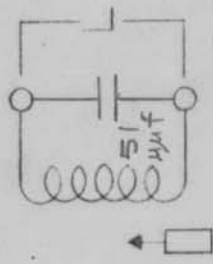
Total Ind - .95 - 1.01 μ hy
 Q at test Freq. - 90 or Greater
 Freq. (Test) - 25 mc
 MECH. SPECS.

Wire - #30 Magnet Wire
 Core - Powdered Iron
 Form - Phenolic

8-32 threaded Mtg. Bushing x 1/4 Lg.
 8-34 threaded tuning slug.



Color Code Dot
(Blue)



Hardware Supplied -

- One ea. 3-48 Hex Locking Nut } Brass,
- One ea. 8-32 Hex Mtg. Nut } Nickel
- One ea. #8 Internal Lockwasher } Plate

REQ. ITEM	PART NO.	DESCRIPTION	SYMBOL
B	Q WAS 100	THE TECHNICAL MATERIEL CORP. MAMARONECK, NEW YORK	
A	Q WAS 115	COIL, RF, TUNED, 14 MC	
ISSUE ITEM	CHANGED FROM		
	7-22-66 16619 RME		
	4-6-64 11159 AM. J. P. C. P.		
	DATE	CH. NO.	DRAFTS
	SCALE:	NPL	2A-1445-7
<p>MAXIMUM ALLOWABLE TOLERANCES HAVE BEEN DETERMINED AND ANY DEVIATIONS WILL BE CAUSE FOR REJECTION. REMOVE ALL BURRS AND SHARP EDGES</p>			
DEC. DIM. \pm			
FRAC DIM. \pm			
ANGULAR DIM. \pm			
	TYPE & TEMPER	HEAT TREAT. SPEC.	CHECKED
	FINISH & SPEC. NO.		
			FINAL APPROVAL