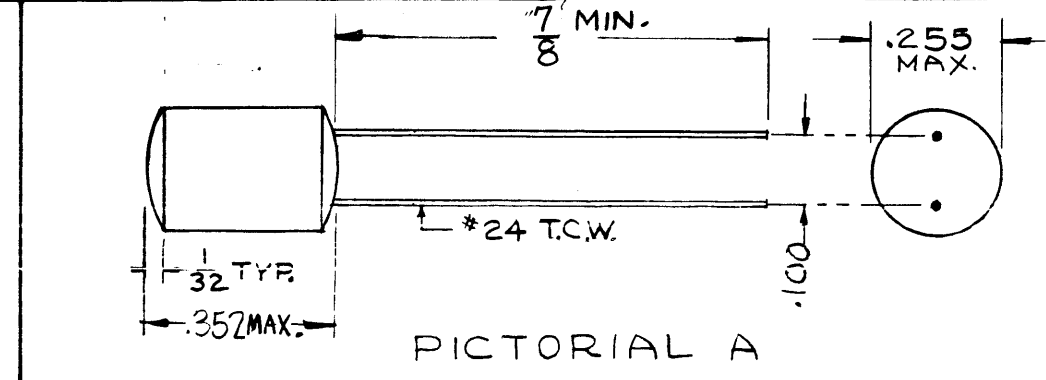


CL-238 B

TMC PART NO.	MFG NO.	PICTORIAL (SIZE)	INDUCTANCE MILLIHENRIES ± 10%	TEST VOLTAGE	MAX. DC RESISTANCE (OHMS)	RESONANT FREQ. NOT LESS THAN	CURRENT RATING (MA)	Q NOT LESS THAN	USED ON
CL-238-1	22-683	A	.68	.005	14	1.7 MC	130	37 AT 790 KC	
CL-238-2	22-153	A	.15	.001	3.7	3.7 MC	330	39 AT 790 KC	CHG-1 OSC



NOTE TO PERSONS RECEIVING THIS DRAWING

THE TECHNICAL MATERIEL CORPORATION claims proprietary right in the material disclosed hereon. This drawing is issued in confidence for engineering information only and may not be reproduced or used to manufacture anything shown hereon without permission from THE TECHNICAL MATERIEL CORPORATION to the user. This drawing is loaned for mutual assistance and is subject to recall at any time.

Property of:
 THE TECHNICAL MATERIEL CORPORATION
 MAMARONECK, NEW YORK

NOTE - UNIT MOLDED IN EPOXY

26070

ISSUE	ITEM	CHANGED FROM	DATE	CH. NO.	DRAFTS	CHECKER	ENG. APP.
B	1	.18 MAX ADDED	4/24/61	4759	DM	GCB	JM
	2	.100 WAS 1/32 (MIN) WAS 1/16					
	1	DELETED, 290 MAX DIM					
A	1	DELETED CHG FROM CL-238-1	9-9-60	2932	CY	NS	NS
	2	CL-238-2 ADDED					

TOLERANCES
 DEC. DIM. ±
 FRAC. DIM. ±
 ANGULAR DIM. ±

SCALE: S-401-114

MAXIMUM ALLOWABLE TOLERANCES HAVE BEEN DETERMINED AND ANY DEVIATIONS WILL BE CAUSE FOR REJECTION. REMOVE ALL BURRS AND SHARP EDGES

REQ. PER UNIT	MODEL	PROJECT NO.	ASS'Y. NO.	DATE
				8-24-60

REQ. ITEM	PART NO.	DESCRIPTION	SYMBOL
		THE TECHNICAL MATERIEL CORP. MAMARONECK, NEW YORK	
		STOCK SIZE	
		COIL RF, FIXED	
		MATERIAL	
		TYPE & TEMPER	
		HEAT TREAT. SPEC.	
		DRAWN	
		CHECKED	
		FINISH & SPEC. NO.	
		ELEC. DES. APP.	
		MECH. DES. APP.	

CL-23