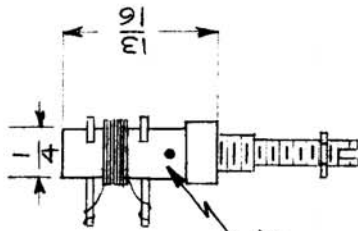
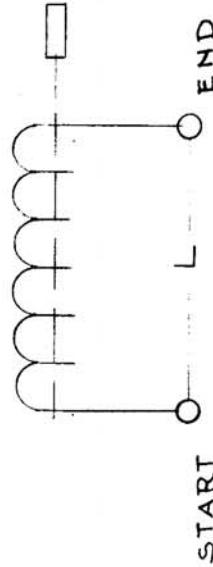


REQ. PART. UNIT	1	USED ON	CL-246	A
MODEL	CHG-1	ASBY. NO.		
		DATE	9-27-1960	

MODEL	REQ.	FUNCTION	OPER. FREQ. MCS.	SYM.	TEST FREQ.	Q. AT TEST FREQ. MUST BE GREATER THAN	NOMINAL IND. (uhy) W/ CORE
CHG-1	1	MULT. BANDS	16	L1115	7.9 MC	65	1.23



COLOR CODE BLACK



REQ. ITEM	PART NO.	DESCRIPTION	SYMBOL
		THE TECHNICAL MATERIEL CORP. MAMARONECK, NEW YORK	
		COIL, RF, TUNED BAND 9	
		<i>J. De Luca</i>	
		DRAWN	CHECKED
		<i>G.R.F.</i>	
		ELEC. DES. APP.	MECH. DES. APP.
		FINISH & SPEC. NO.	CL-246
			A

ISSUE ITEM: A 1
 CHANGED FROM: COLOR CODE BLACK ADDED
 DATE: 12-20-60
 CH. NO.: 3787
 DRAFTS: M.A.F.
 CHECKER: J.H.R.
 ENG. APP.: *[Signature]*
 SCALE: 2A-1981-1
 TOLERANCES: MAXIMUM ALLOWABLE TOLERANCES HAVE BEEN DETERMINED AND ANY DEVIATIONS WILL BE CAUSE FOR REJECTION. REMOVE ALL BURRS AND SHARP EDGES
 DEC. DIM. ±
 FRAC. DIM. ±
 ANGULAR DIM. ±