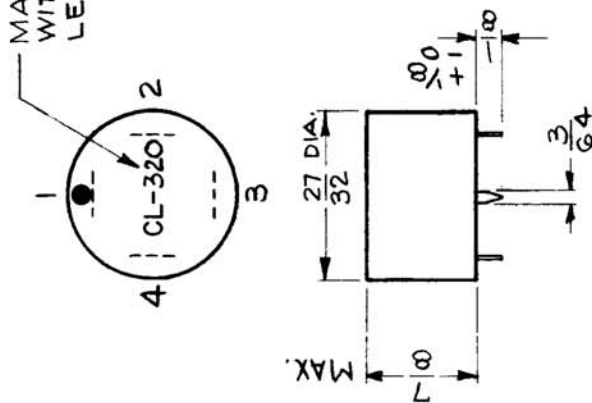


THE CONTENTS OF THIS DRAWING ARE THE EXCLUSIVE PROPERTY OF THE TECHNICAL MATERIEL CORP. ITS UNAUTHORIZED USE FOR REPRODUCTION IN WHOLE OR IN PART IS STRICTLY FORBIDDEN.

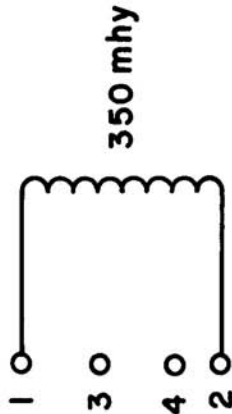
REQ. PER UNIT	1	MODEL	VLR-1	USED ON ASSY. NO.	A-3168	DATE	5-29-63
---------------	---	-------	-------	-------------------	--------	------	---------

CL-320 0

MARK TMC PART NO. WITH LATEST REVISION LETTER



MOUNTING DETAIL



SPECIFICATIONS

WINDING DATA:

TYPE = SOLENOID  
 NO. OF TURNS = 660  
 INDUCTANCE = 350 mh ±10%  
 D. C. RESISTANCE = NOT RATED  
 CURRENT RATING = NOT RATED  
 COIL FORM DATA:

MATERIAL = NYLON

CASE DATA:

MATERIAL = POTTED PER TMC GL128-2  
 FINISH = COLOR RED  
 TERMINAL DATA:  
 QUANTITY = 4  
 TYPE = STAKED LUG, P.C.

SYM	DESCRIPTION	DATE	CH. NO.	DRAFTS	CHECKER	ENG. APP.	REQ. ITEM	PART NO.	M.I.GELLMAN DESCRIPTION	SYMBOL
0	ORIGINAL RELEASE FOR PRODUCTIONS	6-1-64	0	A.M.	<i>RM</i>				THE TECHNICAL MATERIEL CORP. MAMARONECK. NEW YORK	0
X1	COMPLETELY REVISED ELEC. SPEC NOTES; CODE WAS 2AC-176	12/11/63	1	JL	<i>MR</i>				COIL, R.F., FIXED	0
	UNLESS OTHERWISE SPECIFIED DIMENSIONS ARE IN INCHES AND INCLUDE CHEMICALLY APPLIED OR PLATED FINISHES					SCALE				
DECIMALS										
.X ±.05										
.XX ±.01										
.XXX ±.005										
FRACTIONS										
± 1/64										
ANGLES										
± 0° 30'										
TOLERANCES	2A-3356									
									FINISH & SPEC. NO.	
									CHECKED	
									DRAWN	