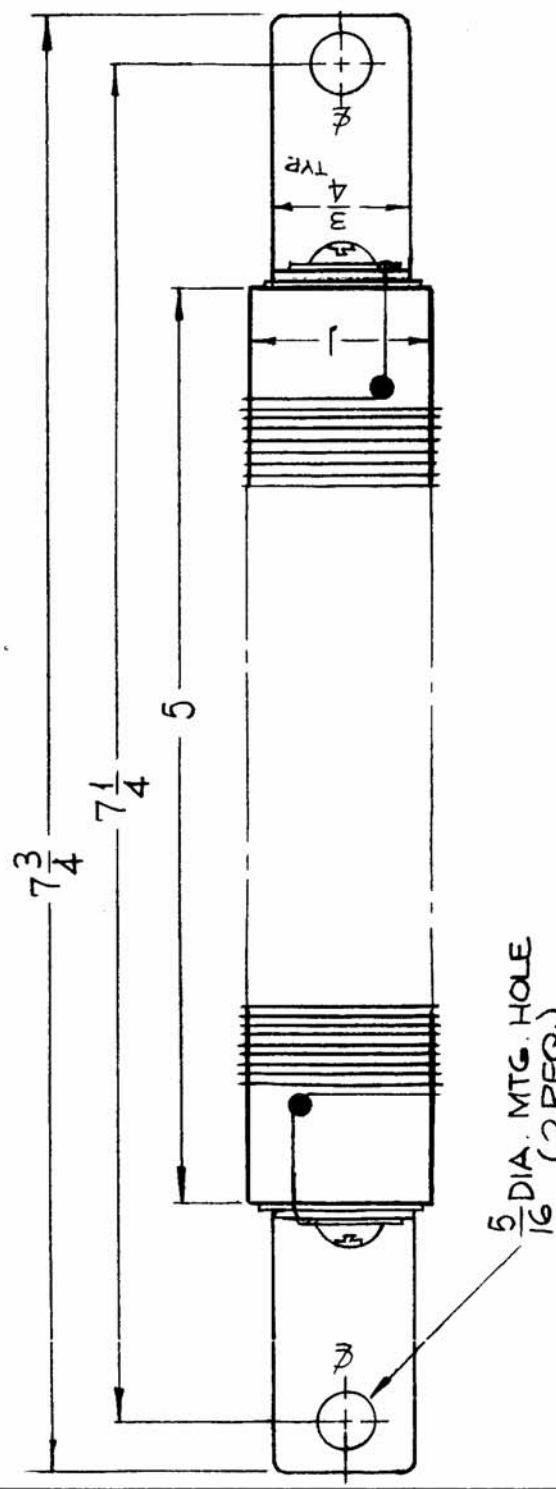
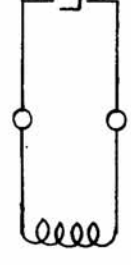


REQ. PER UNIT		USED ON		CL-338	0
2		MODEL	ASSY. NO.		
		GPT-200K AX-395 A-325B		4-21-64	

ELECTRICAL SPECS:
 L ~ 35 uhy
 Q ~ GREATER THAN 180
 F ~ 2.5 mc.

MECHANICAL SPECS:
 CERAMIC COIL FORM
 73 TURNS NO. 17 CEROC.
 WIRE.



$\frac{5}{16}$ DIA. MFG. HOLE
 (2 REQ.)

REQ. ITEM	PART NO.	F. BUDETTI	DESCRIPTION	SYMBOL
0			COIL R.F. FIXED	
			THE TECHNICAL MATERIEL CORP. MAMARONECK, NEW YORK	
Sym	Description	Date	Ch. No.	Scale
		5-5-64		1" = 1"
UNLESS OTHERWISE SPECIFIED DIMENSIONS ARE IN INCHES AND INCLUDE CHEMICALLY APPLIED OR PLATED FINISHES				
TOLERANCES DECIMALS FRACTIONS .X ± .05 ± 1/64 .XX ± .01 ANGLES .XXX ± .005 ± 0° 30'				
TYPE & TEMPER: SRG DRAWN: [Signature] CHECKED: [Signature] HEAT TREAT. SPEC.: [Blank] FINISH & SPEC. NO.: 2A-3465-1 ELEC. DES. APP.: [Signature] MECH. DES. APP.: [Signature]				
STOCK SIZE: [Blank] MATERIAL: [Blank] FINAL APPROVAL: CL-338				