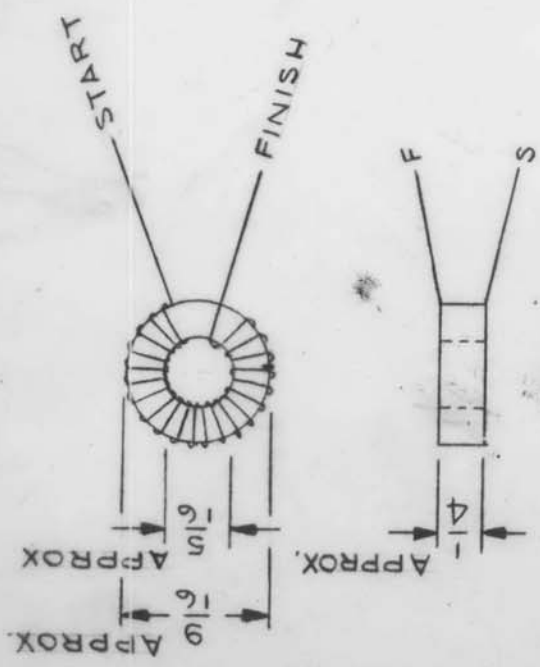


REQ. PER UNIT	MODEL	USED ON ASS'Y. NO.	DATE

CL350



SCHEMATIC



MODEL	REQ'D	FUNCTION	FREQ. (K)	SYM
FX211	2	LOW PASS FILTER	30-600	L2 & 3

- ELECTRICAL SPECIFICATION -
 INDUCTANCE @ 790 KC 360 μ h \pm 5%
 "Q" @ 795KC - 155
 UNIVERSAL WINDING
 CORE: POWDERED IRON

REQ. ITEM	PART NO.	DESCRIPTION	SYMBOL
		POSE	
		THE TECHNICAL MATERIEL CORP. MAMARONECK, NEW YORK	
		COIL, RF, TOROID	
		J.L. 4/19/65	
		DRAWN	
		CHECKED	
		FINAL APPROVAL	
		CL350	
		ELEC. DES. APP. MECH. DES. APP.	
		FINISH & SPEC. NO.	

DATE	4-19-65
CHECKER	J.L.
DRAFTS	
ENG. APP.	
SCALE	
DESCRIPTION	ORIG. RELEASE FOR PRODUCTION
CODE	8A-3223-38

UNLESS OTHERWISE SPECIFIED
 DIMENSIONS ARE IN INCHES AND INCLUDE
 CHEMICALLY APPLIED OR PLATED FINISHES

TOLERANCES

FRACTIONS
 \pm 1/64
 ANGLES
 \pm 0° 30'

DECIMALS
 .XX \pm .01
 .XXX \pm .005