

TMC P/N	NO OF TURNS	WIRE	"A"	FORM	INDUCTANCE ±10%	CORE	* CAPACITOR	FIG
CL438-1	100	W1141-29	1-5/16"	CF138	60uh	C1109-12	CM15B301J	A
-2	100	W1141-29	1-5/16"	CF138	40uh	NONE	CM15B301J	A
-3	75	W1141-29	1"	CF138	30uh	NONE	CM15B101J	A
-4	48 TAP AT 28	W1123-25	1-3/16"	CF138	10uh 6.5/4.5	NONE		B
-5	11	W1123-14	1-3/16"	CF138	0.8uh	NONE		A
-6	11	W1123-14	1-3/16"	5/8	0.8uh	AIR		C

REVISIONS						
ZONE	LTR	DESCRIPTION	DATE	E.M.N.NO	DRAFT	CHKD APPD
	X	EXP. RELEASE	3/31/69			
	Ø	ORIG RELEASE FOR PROD	7/1/69		CV	

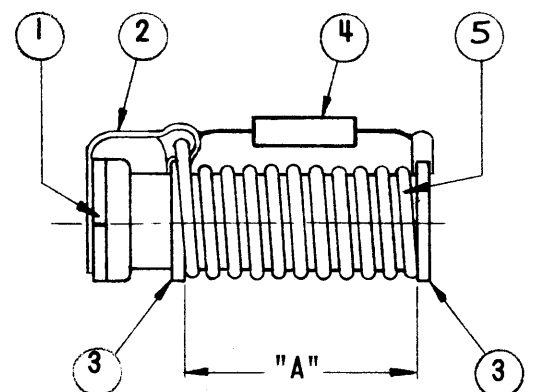
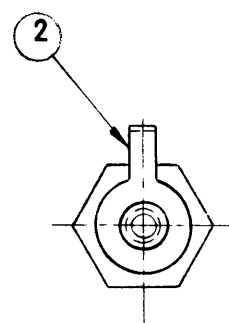


FIGURE A

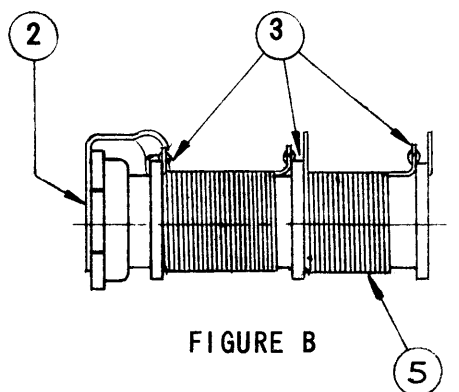


FIGURE B

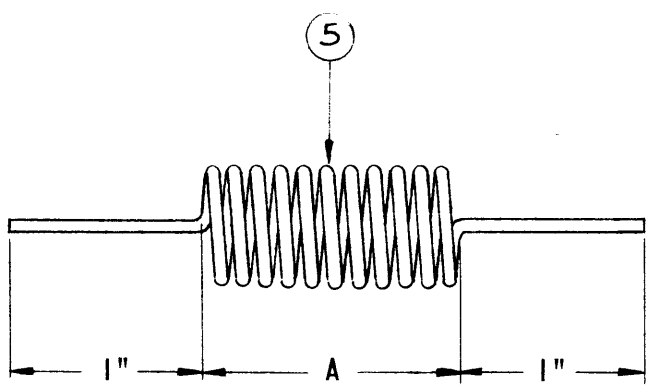


FIGURE C

MFG ASSEMBLY INSTRUCTIONS

1. PLACE ITEM 3 ON ITEM 1 AT LOCATION "A" AS SHOWN.
2. WIND ITEM 5 ON ITEM 1 AS SHOWN AND SOLDER TO ITEM 3 ALONG WITH ITEM 2 AND ITEM 4 ACCORDING TO CHART.
3. CUT OFF THREADED PORTION OF ITEM 6, COAT WITH ITEM 7, AND POSITION IN CENTER OF COIL. (CL438-1 ONLY).
4. COAT COIL WITH ITEM 8 AND BAKE IN OVEN 1/2 HOUR AT 215°F
5. TEST FOR INDUCTANCE ON Q METER AS SHOWN ON CHART.

REQ'D ITEM	PART NUMBER	DESCRIPTION	SYM.
8	GL104-2	INSULATING, VARNISH, ELEC	
7	GL103	ADHESIVE, NITRO CELLULOSE BASE	
6	C1109-12	CORE, TUNING	
5	WIRE		
4	CAPACITOR *		
3	TE146-1	COLLAR & LUG	
2	TE111-1	LUG, SOLDER	
1	CF138	FORM, COIL	

LIST OF MATERIAL

QTY / UNIT	MODEL USED ON	ASS'Y NO.
	MTR( )-150	
APPLICATION		
	CODE	

**NOTICE TO PERSONS RECEIVING THIS DRAWING**  
 THE TECHNICAL MATERIEL CORPORATION claims proprietary right in the material disclosed hereon. This drawing is issued in confidence for engineering information only and may not be reproduced or used to manufacture anything shown hereon without permission from THE TECHNICAL MATERIEL CORPORATION to the user. This drawing is loaned for mutual assistance and is subject to recall at any time.

UNLESS OTHERWISE SPECIFIED DIMENSIONS ARE IN INCHES AND INCLUDE CHEMICALLY APPLIED OR PLATED FINISHES

DECIMALS: .X ± .05, .XX ± .01, .XXX ± .005  
 FRACTIONS: 1/64  
 TOLS.: ANGLES 0° -30'

FINISH

FINAL APPROVAL: [Signature] DATE: 7/1/69  
 MESH. DES. DATE:  
 ELECT. DES. DATE: 7/1/69  
 CHECKED: [Signature] DATE: 4-7-69  
 DRAWN: [Signature] DATE: 3/31/69

THE TECHNICAL MATERIEL CORP.  
 MAMARONECK, NEW YORK

COIL, RF, FIXED

SIZE: B  
 CODE IDENT. NO.: 82679  
 DWG NO.: CL 438  
 ISSUE: Ø

SCALE: 1:1  
 SHEET: OF