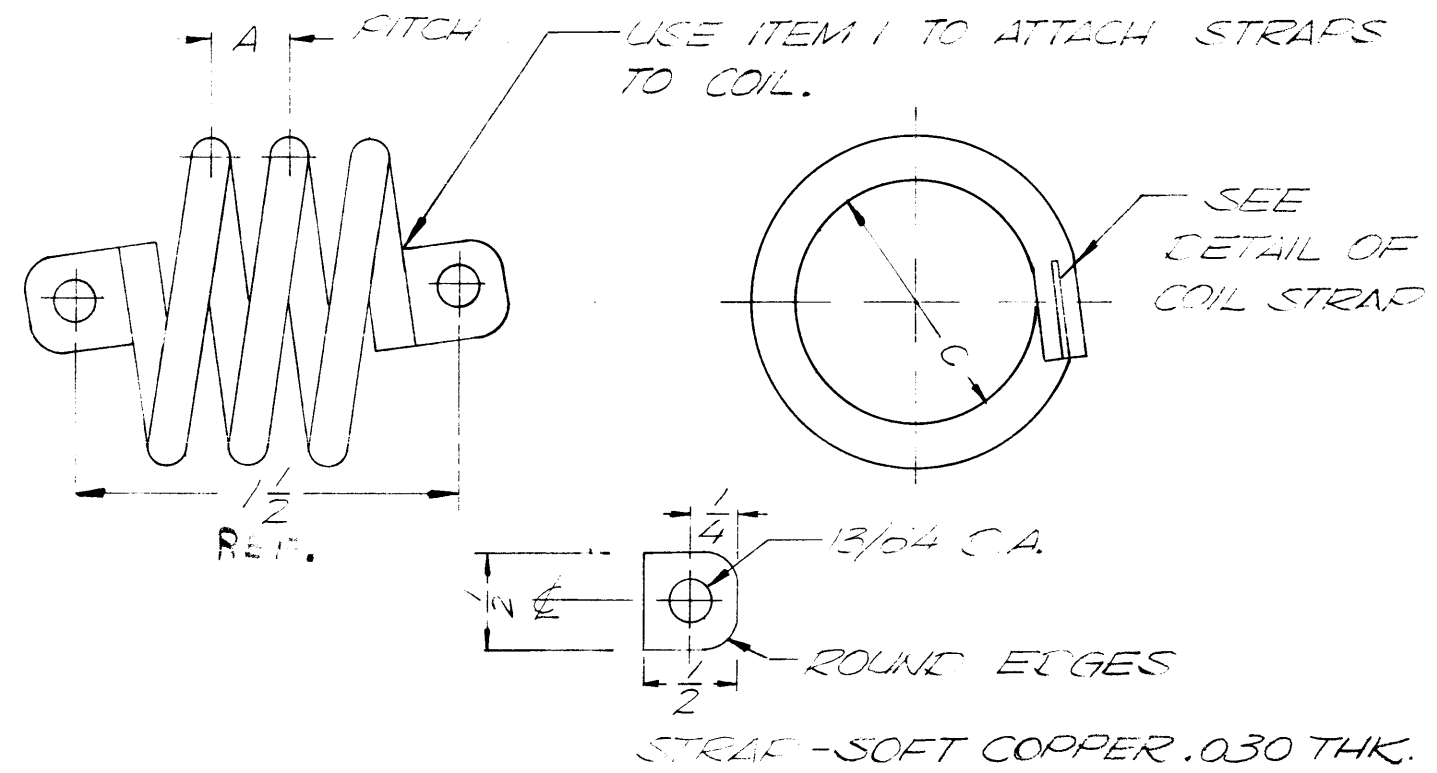


TMC PART NO.	A (PITCH)	C (I.D.)	TURNS	FINISH	MATERIEL
CL 449-1	27/64	15/16	2	S 245	TU100-3
CL 449-2	27/64	1 3/8	2	S 245	TU100-3
CL 449-3	9/32	1 3/8	3	S 245	TU100-3

REVISIONS						
ZONE	LTR	DESCRIPTION	DATE	E.M.N.NO	DRAFT	CHKD APPD
	X	EXP RELEASE	5/27/70		GE	JFB
	Ø	ORIG RELEASE FOR PROD	6/1/70		CV	
	A	ADD NOTE - SOFT COPPER	4/6/72	20585	GE	EQ EQ



PART NO.	INDUCTANCE SEE NOTE
-1	.11 - .13 uh
-2	.14 - .16 uh
-3	.27 - .29 uh

NOTE: VALUE OF COIL MUST BE MAINTAINED AT JUST PITCH TO ACCOMPLISH.

AF 110		
QTY / UNIT	MODEL USED ON	ASS'Y NO.
APPLICATION		
CODE		
NOTICE TO PERSONS RECEIVING THIS DRAWING THE TECHNICAL MATERIEL CORPORATION claims proprietary right in the material disclosed hereon. This drawing is issued in confidence for engineering information only and may not be reproduced or used to manufacture anything shown hereon without permission from THE TECHNICAL MATERIEL CORPORATION to the user. This drawing is loaned for mutual assistance and is subject to recall at any time.		

UNLESS OTHERWISE SPECIFIED DIMENSIONS ARE IN INCHES AND INCLUDE CHEMICALLY APPLIED OR PLATED FINISHES	
DECIMALS .X ± .05 .XX ± .01 .XXX ± .005	FRACTIONS 1/64 ANGLES 0° - 30'
MATERIAL AS NOTED	
FINISH AS NOTED	

X	1	BS 101	SOLDER, SILVER	
REQ'D	ITEM	PART NUMBER	DESCRIPTION	SYM.
LIST OF MATERIAL				
FINAL APPROV. <i>[Signature]</i> DATE 3/2/70 MECH. DES. DATE ELECT. DES. <i>[Signature]</i> DATE 5/25/70 CHECKED <i>[Signature]</i> DATE 5/28/70 DRAWN <i>[Signature]</i> DATE 5/29/70				
THE TECHNICAL MATERIEL CORP. MAMARONECK, NEW YORK COIL, RF				
SIZE	CODE IDENT. NO.	DWG NO.	ISSUE	
B	82679	CL 449	<i>[Signature]</i>	
SCALE NTS			SHEET OF	