

5

4

3

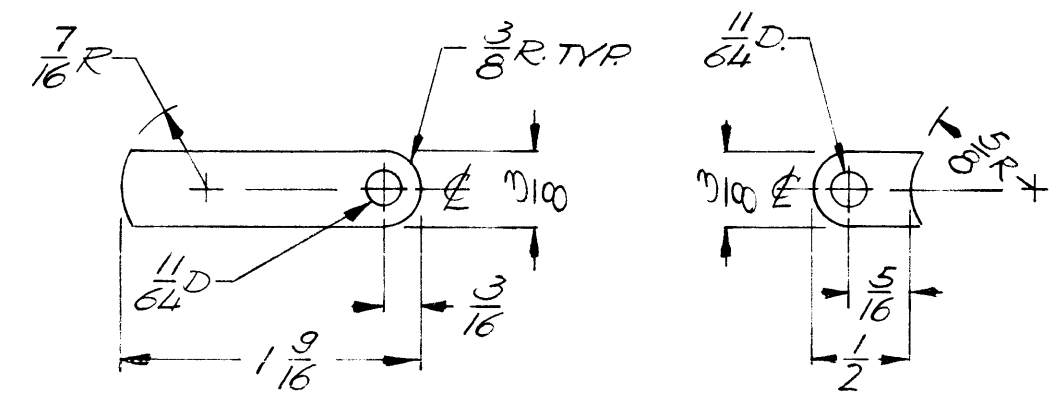
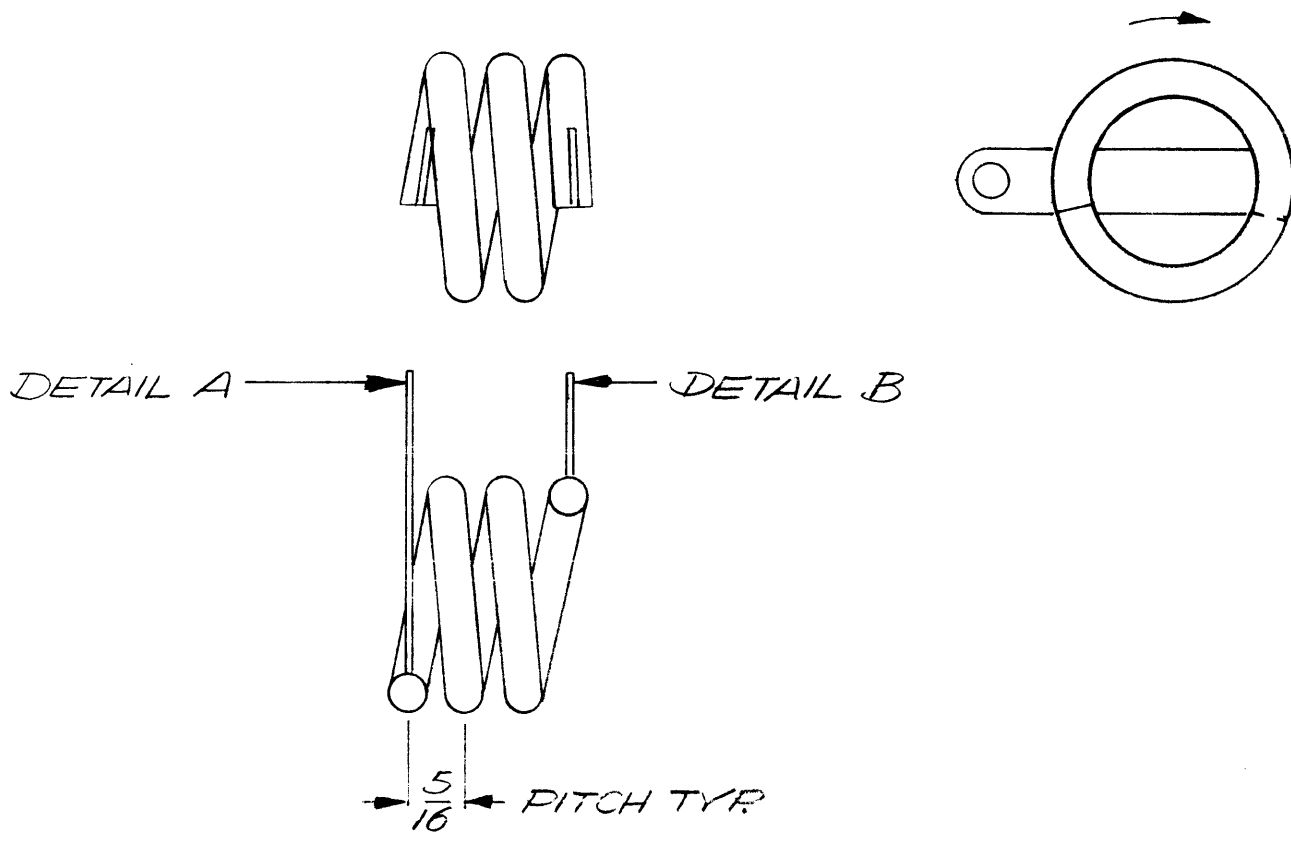
2

1

REVISIONS							
E.M.N. NO.	DRAFT	CHKD	ZONE	LTR	DESCRIPTION	DATE	APPROVED
	GE	S.R.		Ø	ORIGINAL RELEASE FOR PRODUCTION	5/9/72	

SPECIFICATIONS

COIL TO BE 2 1/2 TURNS OF 3/16 COPPER TUBING
 USE ITEM 1 TO ATTACH STRAPS TO COIL
 FINISH: S245 SIL. PLATE, SIL KOTE S423
 O.D.-1-1/4 I.D.-7/8



MATL: .030 H.R. COPPER DETAILS A & B
DETAIL A DETAIL B

1	HFTM-1K	AS-147
QTY / UNIT	MODEL USED ON	ASS'Y NO.
APPLICATION		
CODE		
NOTICE TO PERSONS RECEIVING THIS DRAWING THE TECHNICAL MATERIEL CORPORATION claims proprietary right in the material disclosed hereon. This drawing is issued in confidence for engineering information only and may not be reproduced or used to manufacture anything shown hereon without permission from THE TECHNICAL MATERIEL CORPORATION to the user. This drawing is loaned for mutual assistance and is subject to recall at any time.		

UNLESS OTHERWISE SPECIFIED DIMENSIONS ARE IN INCHES AND INCLUDE CHEMICALLY APPLIED OR PLATED FINISHES	
DECIMALS .X ± .05 .XX ± .01 .XXX ± .005	FRACTIONS 1/64 TOLS. ANGLES 0° 30'
MATERIAL AS NOTED	FINISH AS NOTED

X	1	BS101	SOLDER, SILVER	
REQ'D	ITEM	PART NUMBER	DESCRIPTION	SYM.
F.B. LIST OF MATERIAL				
FINAL APPROVAL G.B.		DATE 5/8/72		THE TECHNICAL MATERIEL CORP. MAMARONECK, NEW YORK COIL INDUCTANCE
MECH. DES.		DATE		
ELECT. DES.		DATE		
CHECKED		DATE		
DRAWN GE		DATE 4-27-72		
SIZE B	CODE IDENT. NO. 82679	DWG NO. CL474	ISSUE Ø	
SCALE N.T.S.			SHEET	OF

5

4

3

2

1