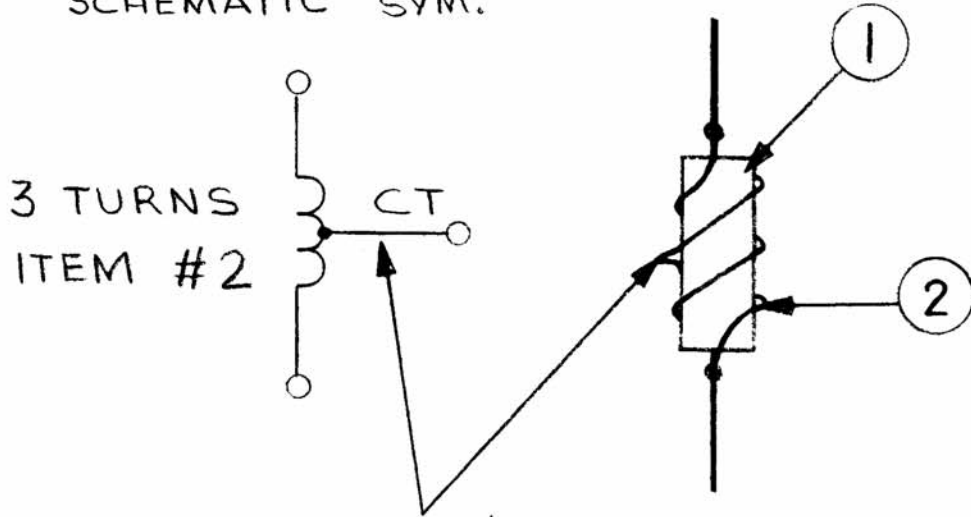


APPLICATION			REVISIONS						
QTY	MODEL USED ON	ASS'Y NO.	LTR	DESCRIPTION	DATE	E.M.N.NO	DRAFT	CHKD	APPD
1	A5625		Ø	EXP. RELEASE	4-2-75		FI		*

SCHEMATIC SYM.



TAP AT 1 1/2 TURNS  
DO NOT TIN PLATE

USE FOR  
SPARE PARTS ONLY

REQ'D	ITEM	PART NUMBER	DESCRIPTION	SYM.
X	3	BS100	SOLDER, TIN ALLOY	
X	2	W1100-8-1000	WIRE, SOLID TINNED	
1	1	RC676F822J	RESISTOR, FXD. COMP.	

LIST OF MATERIAL

UNLESS OTHERWISE SPECIFIED  
DIMENSIONS ARE IN INCHES  
AND INCLUDE CHEMICALLY APPLIED  
OR PLATED FINISHES

DECIMALS	FRACTIONS	TOLS.	ANGLES
.X ± .05	1/64		
.XX ± .01			
.XXX ± .005			0° - 30'

MATERIAL	FINAL APPROVAL	DATE
FINISH	MECH. DES.	DATE
	ELECT. DES.	DATE
	CHECKED	DATE
	DRAWN	DATE

QB	1/10/77
F. IANNUZZI	4-2-75
F. IANNUZZI	4-2-75

THE TECHNICAL MATERIEL CORP.  
MAMARONECK, NEW YORK

COIL, TAPPED R.F.

NOTICE TO PERSONS RECEIVING THIS DRAWING  
THE TECHNICAL MATERIEL CORPORATION claims proprietary right in the material disclosed hereon. This drawing is issued in confidence for engineering information only and may not be reproduced or used to manufacture anything shown hereon without permission from THE TECHNICAL MATERIEL CORPORATION to the user. This drawing is loaned for mutual assistance and is subject to recall at any time.

SIZE	CODE IDENT. NO.	DWG NO.	ISSUE
A	82679	CL491	Ø
SCALE 4:1		SHEET	OF