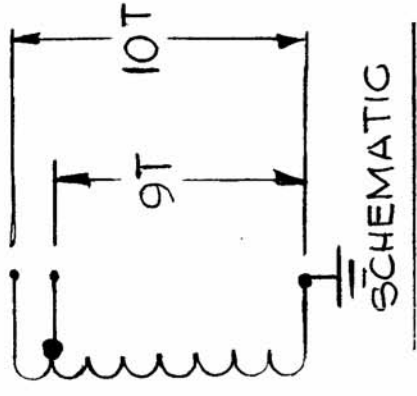
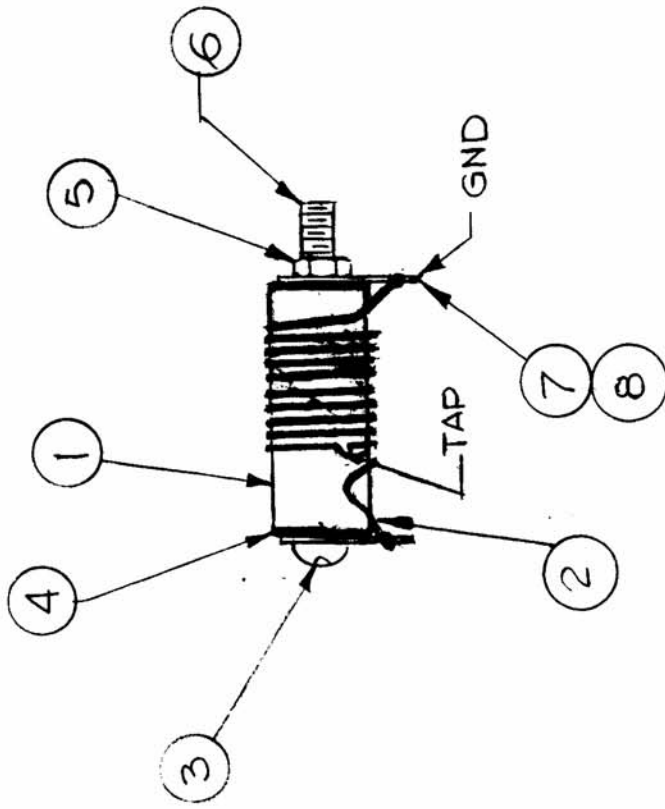


| | | | | | | | | | |
|---------------|---|-------|--------|-----------|--------|------|--------|-------|---|
| REQ. PER UNIT | 1 | MODEL | TMA-1K | ASSY. NO. | BMA520 | DATE | 8-9-76 | CL498 | Ø |
|---------------|---|-------|--------|-----------|--------|------|--------|-------|---|



| REQ. ITEM | PART NO. | DESCRIPTION | SYMBOL |
|-----------|-------------|----------------------|--------|
| X 8 | BS 100 | SOLDER, TIN ALLOY | |
| 2 7 | TE104-3 | TERMINAL, LOCKING | |
| 1 6 | SM 129 | SPARK CAP HOLDER | |
| 1 5 | NTH0832BN8 | NUT, HEX | |
| 2 4 | WA 109-52 | WASHER, FIBER FLAT | |
| 1 3 | SCBP0832BN9 | SCREW, MACHINE | |
| X 2 | WI123-14 | WIRE ELECT. MAGNETIC | |
| 1 1 | NS3W0210 | INSULATION, STANDOFF | |

| | |
|--|--------------------|
| STOCK SIZE | |
| MATERIAL | |
| TYPE & TEMPER | |
| HEAT TREAT. SPEC. | |
| FINISH & SPEC. NO. | |
| FINISH & SPEC. NO. | |
| ELEC. DES. APP. | |
| MECH. DES. APP. | |
| DATE | 10/11/76 |
| CH. NO. | # |
| DRAFTS | G.D.L. |
| CHECKER | <i>[Signature]</i> |
| ENG. APP. | * |
| SCALE: | |
| MAXIMUM ALLOWABLE TOLERANCES HAVE BEEN DETERMINED AND ANY DEVIATIONS WILL BE CAUSE FOR REJECTION. REMOVE ALL BURRS AND SHARP EDGES | |
| DEC. DIM. ± | |
| FRAC. DIM. ± | |
| ANGULAR DIM. ± | |

TOLERANCES

TMC INDUSTRIAL CORP.
MAMARONECK, NEW YORK

COIL, LOADING

G.D.L.

CHECKED

FINAL APPROVAL

CL 498