

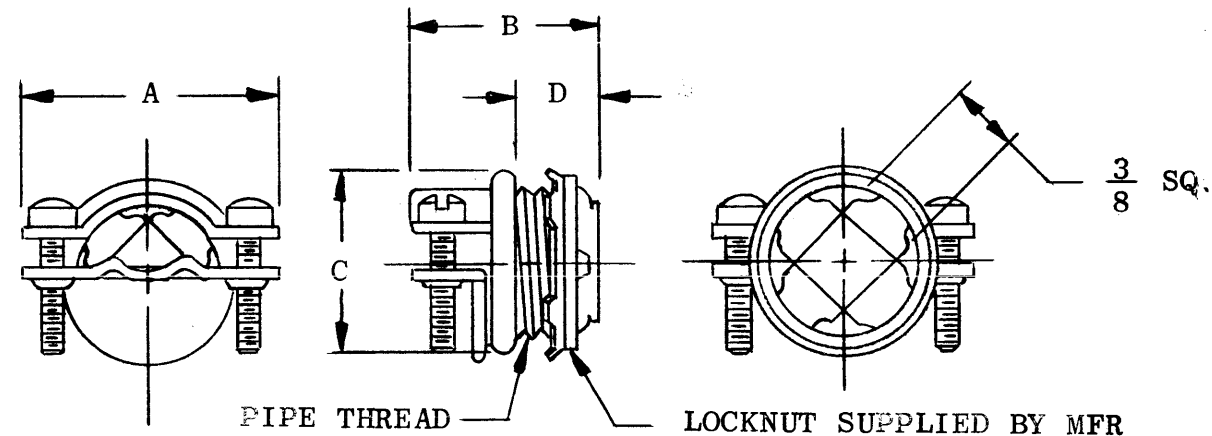
STANDARD DRAWING

| TMC PART NUMBER | MFG PART NUMBER | STYLE | DIMENSIONS | | | | | PIPE THREAD | |
|-----------------|-----------------|-------|------------|--------|---------|-------|-------|-------------|-----------|
| | | | A | B | C | D | E | SIZE | MAJ. DIA. |
| CU113 | 3301 | 1 | 1-11/32 | 1-3/64 | 31/32 | 7/16 | | 1/2 | .823 |
| CU113-2 | 3303 | 2 | 1-5/8 | 1-5/32 | 1-1/4 | 15/32 | .800 | 3/4 | 1.034 |
| CU113-3 | 3304 | 2 | 1-7/8 | 1-1/4 | 1-15/32 | 1/2 | 1.035 | 1 | 1.293 |

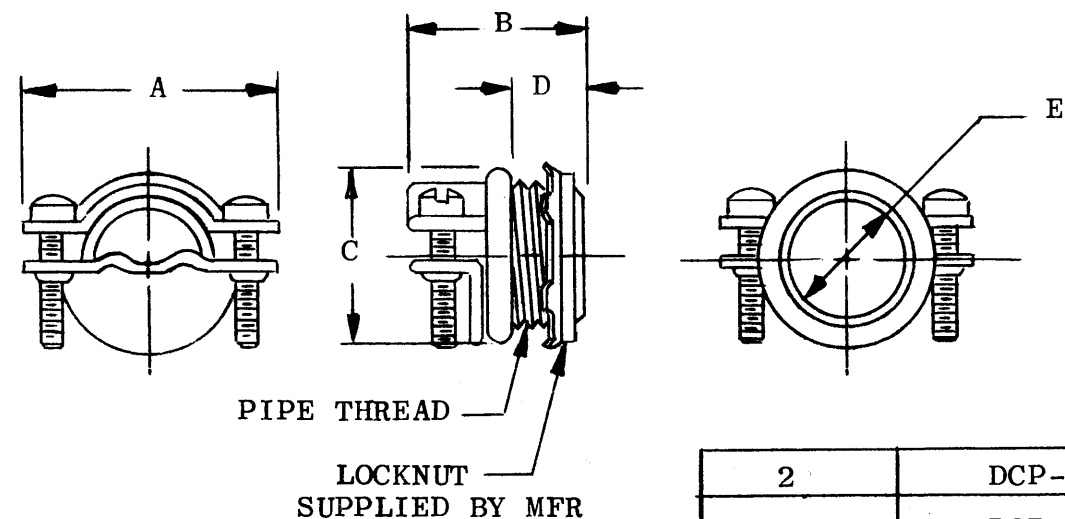
| REVISIONS | | | | | | |
|-----------|------------------------------|---------|------------|-------|------|--------------------|
| SYM | DESCRIPTION | DATE | E.M.N. NO. | DRAFT | CHKD | APPD |
| B | COMPLETELY REDRAWN & REVISED | 4/28/66 | 16174 | JL | | <i>[Signature]</i> |

MATERIAL-STEEL
FINISH - TABOLITE

STYLE 1



STYLE 2



MATERIAL-BODY-STEEL OR MALLEABLE IRON *
FINISH-STEEL PARTS-ZINC PLATED
*MALLEABLE IRON PARTS- CADMIUM PLATED PLUS ALUMINUM LACQUER

| | | |
|------------|---------------|-------------------|
| 2 | DCP-1 | |
| 2 | DCP | |
| Q'TY./UNIT | MODEL USED ON | ASS'Y. NO. |
| SCALE | CODE | S401-35 OR EQUIV. |

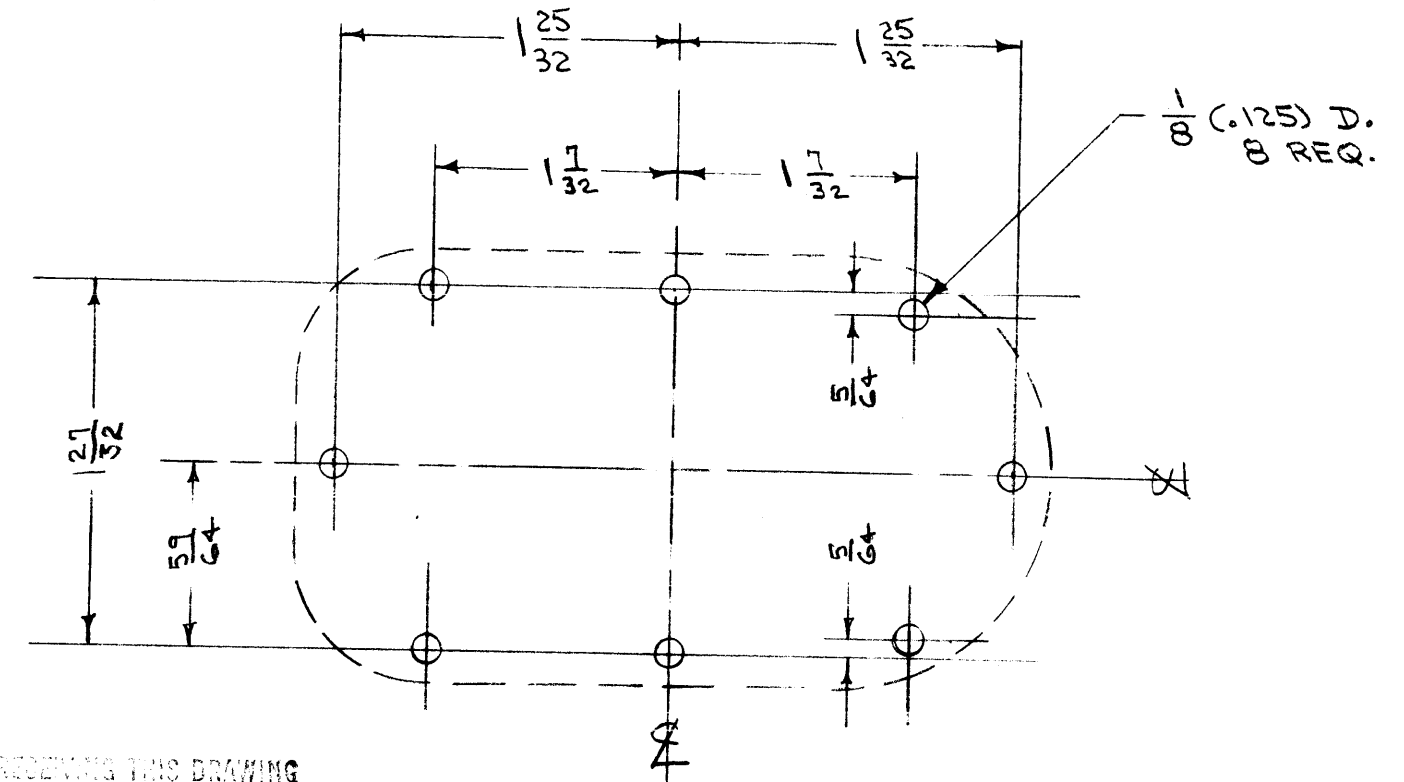
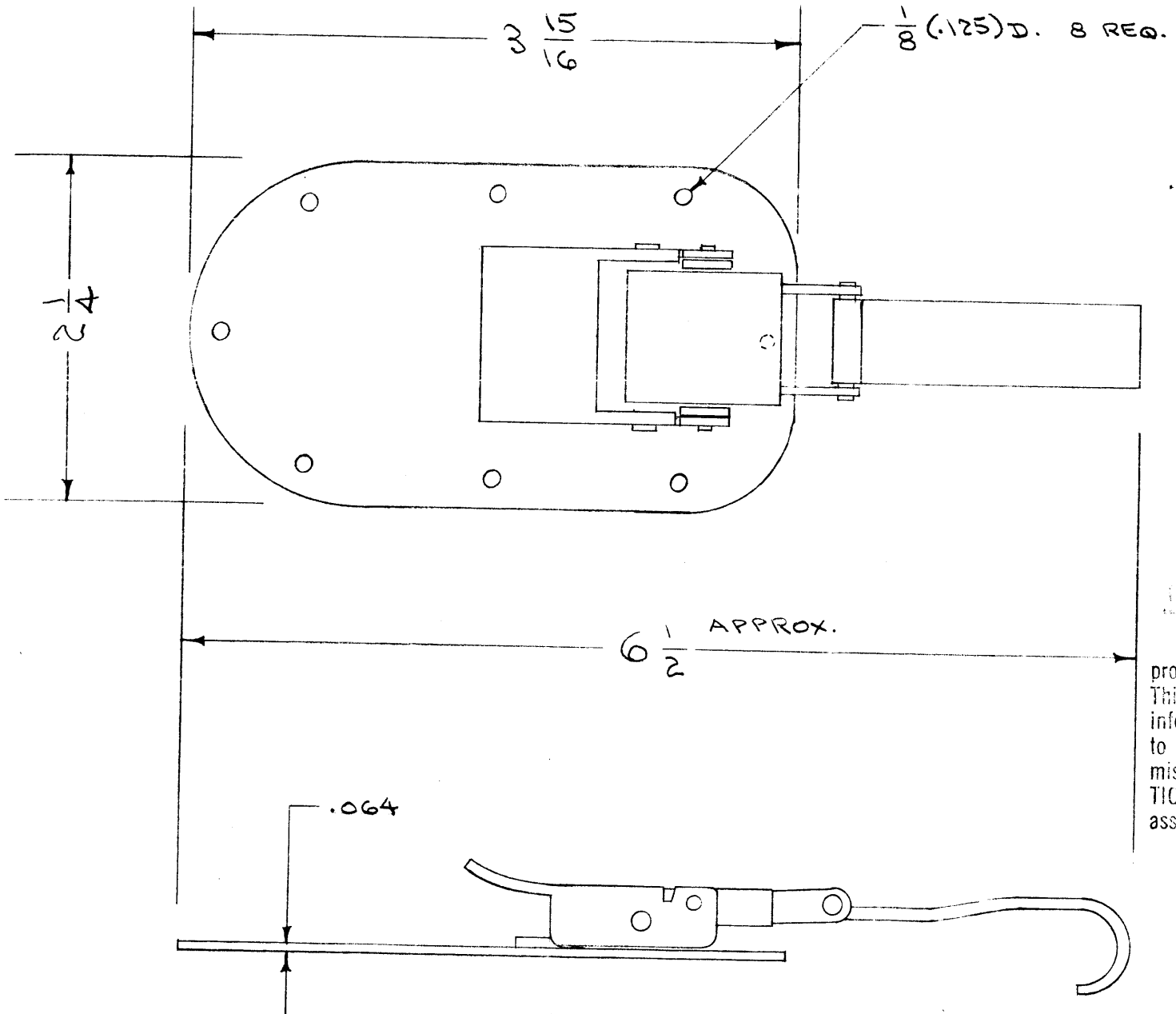
THE CONTENTS OF THIS DRAWING ARE THE EXCLUSIVE PROPERTY OF THE TECHNICAL MATERIEL CORP. ITS UNAUTHORIZED USE OR REPRODUCTION IN WHOLE OR IN PART IS STRICTLY FORBIDDEN.

| REQ'D. | ITEM | PART NUMBER | DESCRIPTION | SYMBOL |
|---|------|--|-----------------|--------------------------------------|
| LIST OF MATERIAL | | | | |
| MATERIAL | | THE TECHNICAL MATERIEL CORP. MAMARONECK, NEW YORK | | |
| SEE NOTES | | TITLE CLAMP, FLEXIBLE CABLE | | |
| FINISH | | SEE NOTES | | |
| UNLESS OTHERWISE SPECIFIED DIMENSIONS ARE IN INCHES AND INCLUDE CHEMICALLY APPLIED OR PLATED FINISHES | | DRAWN J. LESHINSKI | DATE 4/28/66 | FINAL APPROVAL <i>[Signature]</i> |
| | | CHECKED <i>[Signature]</i> | DATE | DATE 5/12/66 |
| DECIMALS .X ± .05 .XX ± .01 .XXX ± .005 | | FRACTIONS ± 1/64 ANGLES ± 0° 30' | | ELECT. DES. DATE |
| TOLERANCES | | MECH. DES. DATE | | SHEET REV. LTR. |

IF IT IS FOUND DESIRABLE TO CHANGE ANY TOLERANCE OR OTHER DETAIL SPECIFIED ON THIS DRAWING NOTIFY THE PURCHASER PROMPTLY.

MAXIMUM ALLOWABLE TOLERANCES HAVE BEEN DETERMINED AND DEVIATIONS WILL BE CAUSE FOR REJECTION. REMOVE ALL BURRS AND SHARP EDGES

CU-116



DRILLING PLAN

NOTICE TO PERSONS RECEIVING THIS DRAWING
 THE TECHNICAL MATERIEL CORPORATION claims proprietary right in the material disclosed herein. This drawing is issued in confidence for engineering information only and may not be reproduced or used to manufacture anything shown hereon without permission from THE TECHNICAL MATERIEL CORPORATION to the user. This drawing is loaned for mutual assistance and is subject to recall at any time.

Property of:
 THE TECHNICAL MATERIEL CORPORATION
 MAMARONECK, NEW YORK

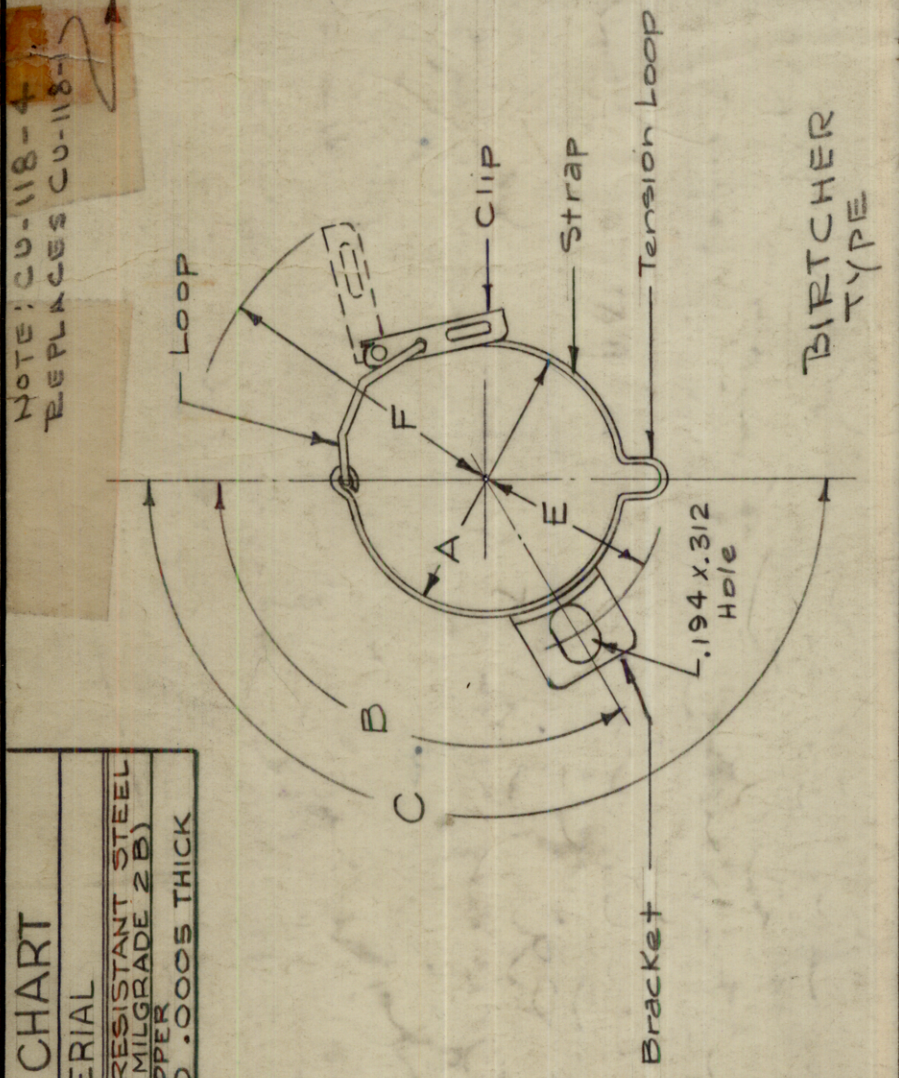
REF: NIELSEN HDWE. CORP. NO. SC-B-83314-6

| REQ. | ITEM | PART NO. | DESCRIPTION | SYMBOL |
|------|------|--------------------|--|-----------------|
| | # | | THE TECHNICAL MATERIEL CORP. MAMARONECK, NEW YORK | |
| | | STOCK SIZE | | |
| | | # | CLAMP, COVER | |
| | | MATERIAL | CTAC | |
| | | WEIGHT PER PC. | | |
| | | TYPE & TEMPER | C.D.D. G-30-5A | |
| | | HEAT TREAT. SPEC. | | |
| | | FINISH & SPEC. NO. | | |
| | | | DRAWN | ELEC. DES. APP. |
| | | | CHECKED | MECH. DES. APP. |
| | | | FINAL APPROVAL | |
| | | | CU-116 | |

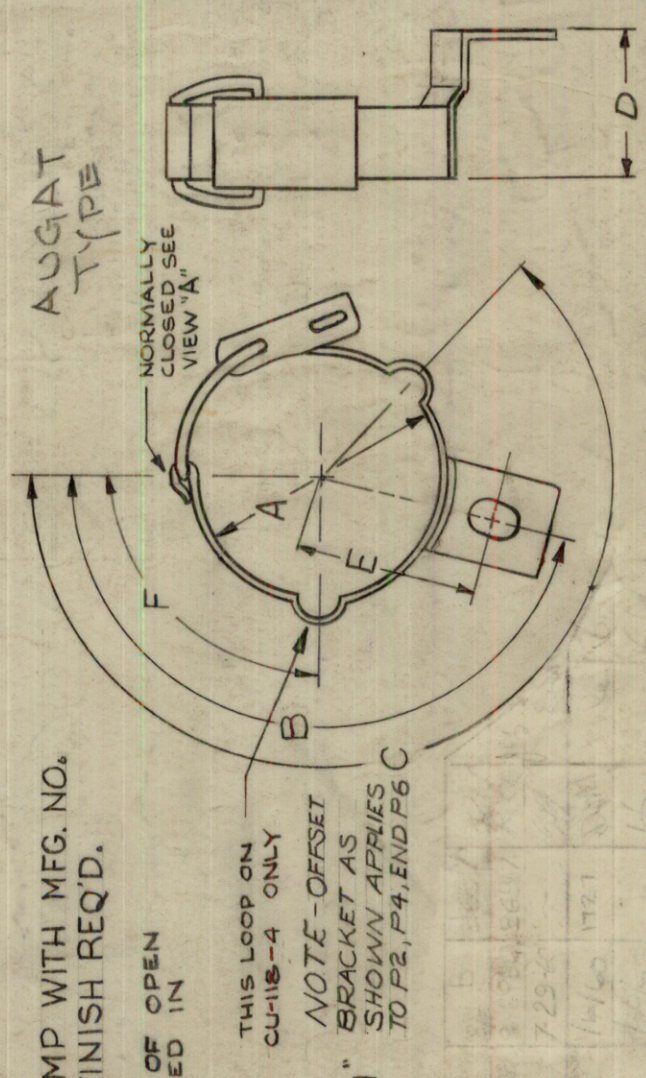
| ISSUE | ITEM | CHANGED FROM | DATE | CN. NO. | DRAFTS | CHECKER | ENG. APP. |
|------------|------|----------------|----------------|---------|---|---------|-----------|
| TOLERANCES | | | | | | | |
| ALL OTHERS | | DEC. DIM. ± | SCALE: 1" = 1" | | DRILL, PUNCH, COMMERCIAL STOCK SIZES AND MANUFACTURERS TOLERANCES ARE NOT INCLUDED. | | |
| | | FRAC. DIM. ± | | | | | |
| | | ANGULAR DIM. ± | | | | | |

| | | | | |
|---------------|-------|-------------|------------|---------|
| 16 | CTAC | 311 | A-799 | G-30-5A |
| REQ. PER UNIT | MODEL | PROJECT NO. | ASS'Y. NO. | DATE |
| | | | | |

| CODE | MATERIAL |
|------|--|
| S | CORROSION RESISTANT STEEL PASSIVATED (MILGRADE 2B) |
| C | BERYLLIUM COPPER SILVER PLATED .0005 THICK |



PURCHASING NOTE
 WHEN ORDERING CLAMP WITH MFG. NO. SPECIFY MATERIAL & FINISH REQ'D.



NOTE
 CONFIGURATION OF OPEN END IF SPECIFIED IN COLUMN F.
 THIS LOOP ON CU-118-A ONLY
 NOTE - OFFSET BRACKET AS SHOWN APPLIES TO P2, P4, END P6 C

| TMC Part No. | MFG. NO. AUGAT | MFG. NO. BIRCHER | DIMENSION | | | | | | REMARKS | FIRST USED ON THESE NO. |
|--------------|----------------|------------------|-----------|------|------|-------|--------|----------------|----------|-------------------------|
| | | | A | B | C | D | E | F | | |
| CU-118-1 | PS168F1-183C | 926C-3 | 1.375 | 120° | 180° | 15/16 | 29/32 | — | 5U4 | |
| CU-118-2 | PS168UB3-943D | 926H-22 | 1.617 | 60° | 120° | 3/4 | 1-1/16 | — | 614G | |
| CU-118-3 | PS168D1-183D | 926B | 1.250 | 115° | 175° | 3/4 | 27/32 | — | 5Y3 | |
| CU-118-4 | PS140F6-2183H | — | 1.375 | 120° | 180° | 1 | 1/32 | OPEN END F-60° | FOR CE52 | |
| CU-118-5 | 170VD1-2232H | — | .937 | 58° | 148° | 1 | 27/32 | OPEN END | — | |
| CU-118-6 | PS168B1-2083H | — | 1.165 | 160° | 210° | 1 | 1 | OPEN END | — | |
| CU-118-7 | PS168B5-2083H | — | 1.165 | 160° | 210° | 1 | 1 | OPEN END | — | |
| CU-118-8 | PS140-F6-2183D | — | 1.375 | 120° | 180° | 3/4 | 1/32 | OPEN END | 5U4-G | |
| CU-118-9 | PS168UB9-943D | — | 1.617 | 60° | 120° | 3/4 | 1/16 | OPEN END | 6080 | |
| CU-118-10 | PS2506-25 | — | .718 | 140° | — | 17/32 | 1/16 | OPEN END | DD100 | |
| CU-118-11 | PS168VA1-2083H | — | 1.110 | 115° | 175° | 1 | 3/32 | OPEN END | RL-131 | |

TYPE DESIGNATION TO BE AS FOLLOWS:
CU-118-2-C

TMC DWG. NO. MATERIAL REQ. & SIZE OF CLAMP (see chart)

| | | | | |
|---------------|-------|-------------|-----------|------|
| REQ. PER UNIT | MODEL | PROJECT NO. | ASSY. NO. | DATE |
| | | | | |

USED ON

| | | | | | | |
|-----------|--------------------------------|---------|---------|--------|---------|-----------|
| REQ. ITEM | CHANGED FROM | DATE | CH. NO. | DRAFTS | CHECKER | ENG. APP. |
| J 2 | ON CU-118-4, CE 502, REF ADDED | 6-18-63 | 9313 | | JWR | |
| | CU-118-11 ADDED | | | | | |

SCALE: 1" = 1"

TOLERANCES
 DEC. DIM. ± .010
 FRAC. DIM. ± 1/64
 ANGULAR DIM. ± 5°

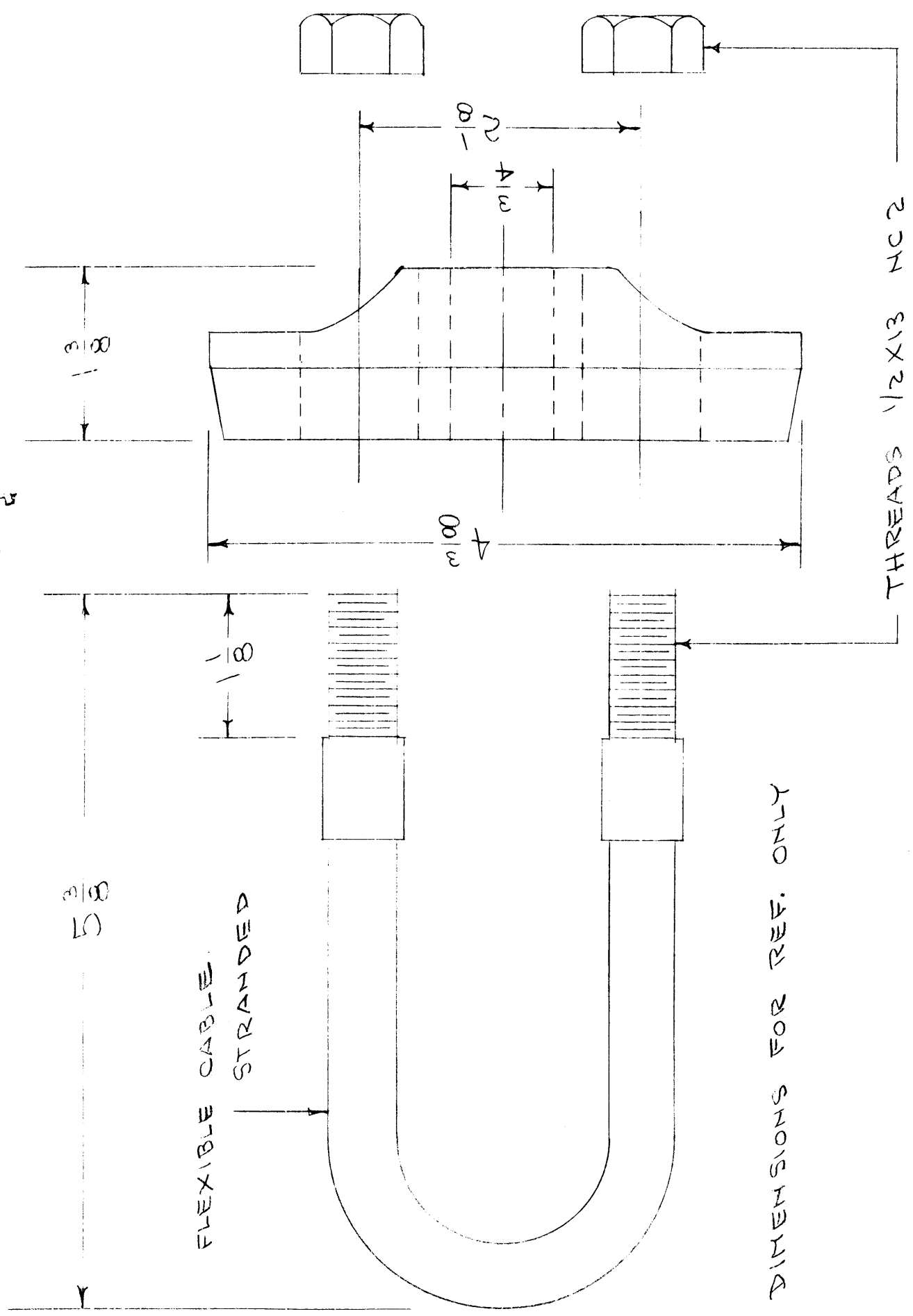
MAXIMUM ALLOWABLE TOLERANCES HAVE BEEN DETERMINED AND ANY DEVIATIONS WILL BE CAUSE FOR REJECTION. REMOVE ALL BURRS AND SHARP EDGES

| | | | |
|--------------------------|----------|---|--------|
| REG. ITEM | PART NO. | DESCRIPTION | SYMBOL |
| | | THE TECHNICAL MATERIEL CORP. MAMARONECK, NEW YORK | |
| | | CLAMP, TUBE | |
| STOCK CHART | | | |
| MATERIAL CHART | | | |
| TYPE & TEMPER CHART | | | |
| HEAT TREAT. SPEC. CHART | | | |
| FINISH & SPEC. NO. CHART | | | |

CHECKED: 16 3/5/58
 RE DRAWN: [Signature]
 ELEC. DES. APP. MECH. DES. APP. FINAL APPROVAL

CU-118 J

CU-122



ALL DIMENSIONS FOR REF. ONLY

REF: HUBBARD FLEX. BAIL CLEVISE
#1552 GALV. STRANDED

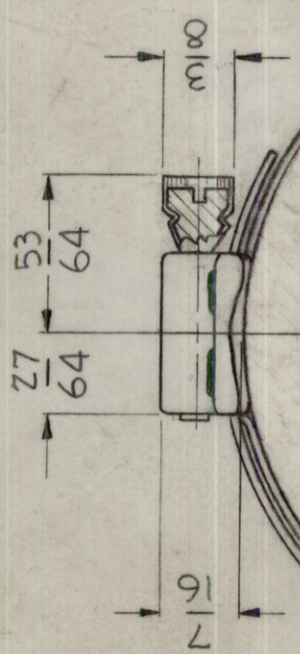
| REQ. ITEM | PART NO. | DESCRIPTION | SYMBOL |
|-----------|----------|--|--------|
| | | THE TECHNICAL MATERIEL CORP. MAMARONECK, NEW YORK | |
| | | BAIL CLEVISE, FLEXIBLE | |
| | | DRWN | CSP |
| | | CHECKED | ALB |
| | | ELEC. DES. APP. MECH. DES. APP. | |
| | | FINISH & SPEC. NO. | CU-122 |
| | | TYPE & TEMPER HEAT TREAT. SPEC. | |
| | | STOCK SIZE | |
| | | MATERIAL | |

THE TECHNICAL MATERIEL CORPORATION
MAMARONECK, NEW YORK

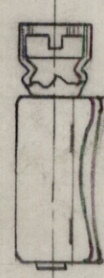
THIS DRAWING IS THE PROPERTY OF THE TECHNICAL MATERIEL CORPORATION. IT IS TO BE USED ONLY FOR THE PROJECT AND NOT TO BE REPRODUCED OR COPIED IN ANY MANNER WITHOUT THE WRITTEN PERMISSION OF THE TECHNICAL MATERIEL CORPORATION. THE USER ASSUMES ALL LIABILITY FOR THE USE OF THIS DRAWING AND IS NOT TO BE HELD RESPONSIBLE FOR ANY DAMAGE OR INJURY TO PERSONS OR PROPERTY CAUSED BY THE USE OF THIS DRAWING.

| ISSUE ITEM | CHANGED FROM | DATE | CH. NO. | DRAFTS | CHECKER | ENG. APP. |
|--|--------------|-------------|-----------|--------|---------|-----------|
| TOLERANCES | | | | | | |
| DEC. DIM. ± | | | | | | |
| FRAC. DIM. ± | | | | | | |
| ANGULAR DIM. ± | | | | | | |
| SCALE: | | | | | | |
| MAXIMUM ALLOWABLE TOLERANCES HAVE BEEN DETERMINED AND ANY DEVIATIONS WILL BE CAUSE FOR REJECTION. REMOVE ALL BURRS AND SHARP EDGES | | | | | | |
| REQ. PER UNIT | MODEL | PROJECT NO. | ASSY. NO. | DATE | | |
| 4 | TER-3500 | | | | | |
| USED ON | | | | | | |

CU-129



QUICK DISCONNECT

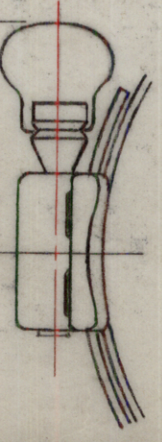


SCREWDRIVER SLOT



THUMB GRIP

| TMC CODE | DESC. | MFG. NO. |
|----------|---|----------|
| SS | SCREWDRIVER SLOT, STAINLESS STEEL BAND & SCREW ASS'Y. | QS-200 |
| WS | THUMB GRIP TYPE, STAINLESS STEEL BAND & SCREW ASS'Y. | QS-200 |
| JS | QUICK DISCONNECT, STAINLESS STEEL BAND & SCREW ASS'Y. | QS-600 |
| SC | SCREWDRIVER SLOT, STAINLESS STEEL BAND, CARBON STEEL SCREW ASS'Y. | QS-100 |
| WC | THUMB GRIP TYPE, STAINLESS STEEL BAND, CARBON STEEL SCREW ASS'Y. | QS-100 |
| JC | QUICK DISCONNECT, STAINLESS STEEL BAND, CARBON STEEL SCREW ASS'Y. | QS-500 |



OPTIONAL TYPE W/ THUMB GRIP

| ISSUE ITEM | CHANGED FROM | DATE | CH. NO. | DRAFTS | CHECKER | ENG. APP. |
|------------|-----------------------------|----------|---------|--------|---------|-----------|
| D 1 | CU129-22 ADDED | 5-20-64 | 14005 | CTL | QTB | |
| C 1 | ADD; -21, M96, 5 7/8, 6-1/2 | 2-10-64 | 10858 | A.M. | TL | |
| B 1 | CU-129-19 & 20 ADDED | 3-7-63 | 8457 | | YH | |
| A 1 | SIZE CODE "18" ADDED | 10/26/60 | 3284 | | WJ | |

SCALE: 5/401-17
 MAXIMUM ALLOWABLE TOLERANCES HAVE BEEN DETERMINED AND ANY DEVIATIONS WILL BE CAUSE FOR REJECTION. REMOVE ALL BURRS AND SHARP EDGES

DEC. DIM. ±
 FRAC. DIM. ±
 ANGULAR DIM. ±

TMC PART NO. TO BE IN THE FOLLOWING FORM:

CU-129-1-SS

TMC DWG. NO.

TMC SIZE CODE

TMC CODE for SCREW TYPE & MAT. (See Chart)

| | | | | |
|---------------|--------|-------------|-----------|----------|
| REC-1 | MODEL | PROJECT NO. | ASSY. NO. | DATE |
| G.P.T. 10,000 | I.P.A. | | | 11-22-60 |
| REQ. PER UNIT | | | | 1-8-59 |

| T.M.C. SIZE CODE | MFG. SIZE CODE | EFFECTIVE RANGE OF CLAMP DIAMETER | |
|------------------|----------------|-----------------------------------|---------|
| | | MIN. | MAX. |
| -1 | -M6 | 7/16" | 25/32" |
| -2 | -M8 | 1/2" | 29/32" |
| -3 | -M10 | 9/16" | 1-1/16" |
| -4 | -M12 | 11/16" | 1-1/4" |
| -5 | -M16 | 13/16" | 1-1/2" |
| -6 | -M20 | 13/16" | 1-3/4" |
| -7 | -M24 | 1-1/16" | 2" |
| -8 | -M28 | 1-5/16" | 2-1/4" |
| -9 | -M32 | 1-9/16" | 2-1/2" |
| -10 | -M36 | 1-13/16" | 2-3/4" |
| -11 | -M40 | 2-1/16" | 3" |
| -12 | -M44 | 2-5/16" | 3-1/4" |
| -13 | -M48 | 2-9/16" | 3-1/2" |
| -14 | -M52 | 2-13/16" | 3-3/4" |
| -15 | -M56 | 3-1/16" | 4" |
| -16 | -M60 | 3-5/16" | 4-1/4" |
| -17 | -M64 | 3-9/16" | 4-1/2" |
| -18 | -M156 | 9-5/16" | 10-1/4" |
| -19 | -M116 | 6-7/8" | 7-3/4" |
| -20 | -M212 | 12-7/8" | 13-3/4" |
| -21 | -M96 | 5-5/8" | 6-1/2" |
| -22 | -M80 | 4 5/8" | 5 1/2" |

PURCHASING INFORMATION (MFG. NO.)

QS-200-M6-S

MFG. TYPE MFG. SIZE

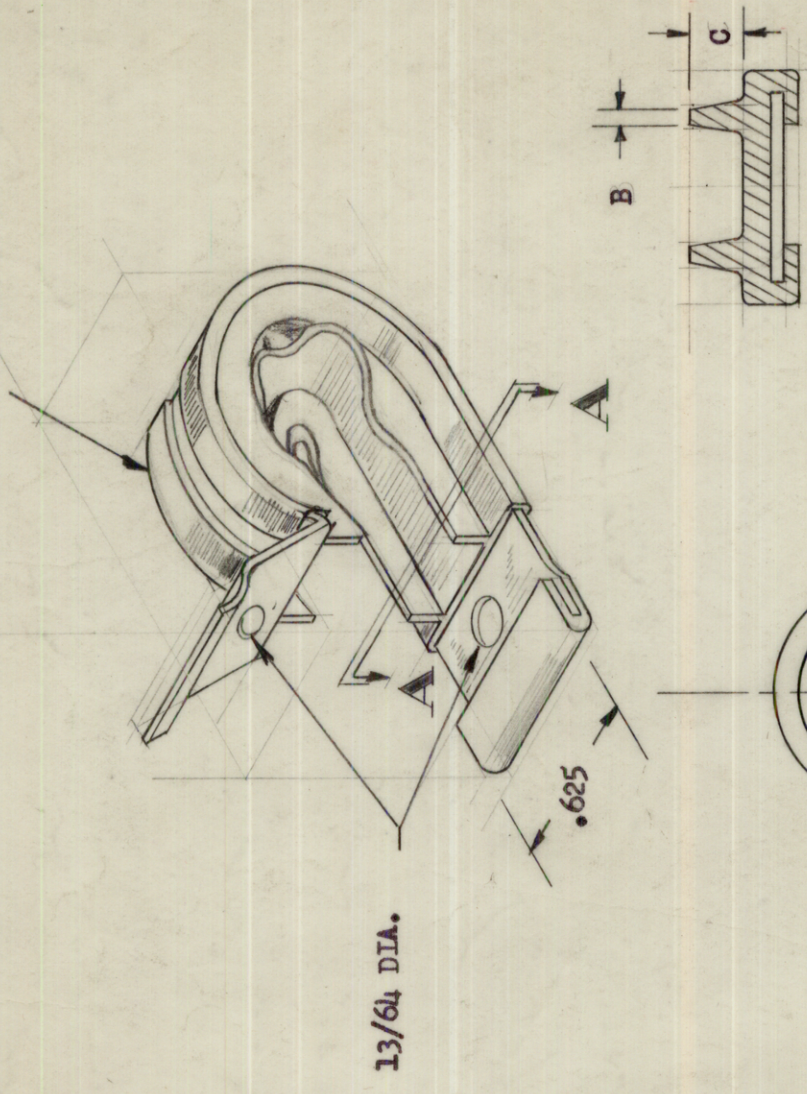
S- SCREW TYPE, W- THUMB TYPE, J- QUICK DISCONNECT

| REQ. ITEM | PART NO. | DESCRIPTION | SYMBOL |
|-----------|----------|---------------------------------|----------|
| | | THE TECHNICAL MATERIEL CORP. | |
| | | MAMARONECK, NEW YORK | |
| | | CLAMP, HOSE | |
| | | STAINLESS STEEL | |
| | | MATERIAL | |
| | | J.C. BIELE | OMPS |
| | | 16 1/16 59 | |
| | | DRAWN | CHECKED |
| | | AYB | |
| | | ELEC. DES. APP. MECH. DES. APP. | |
| | | FINISH & SPEC. NO. | |
| | | | CU-129 D |

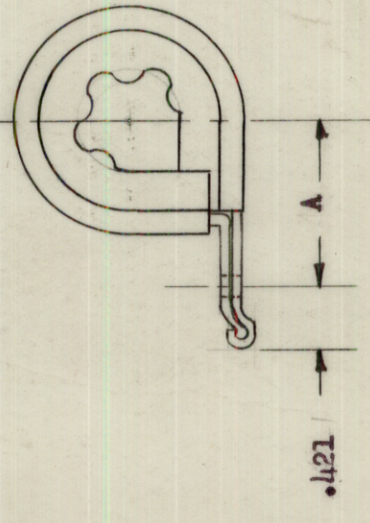
CC-131

Extruded Neoprene Flame Resistant Cushion 1/32" Thick

| TMC PART NO. | CABLE DIAMETER RANGE | A | B | C | MATERIAL THICKNESS |
|--------------|-------------------------|-------|------|------|--------------------|
| CU-131-1 | 1/16 thru 1/8 | .625 | .027 | .125 | .017 |
| CU-131-2 | Above 1/8 thru 1/4 | .656 | .027 | .125 | .017 |
| CU-131-3 | Above 1/4 thru 3/8 | .687 | .027 | .125 | .017 |
| CU-131-4 | Above 3/8 thru 1/2 | .750 | .027 | .125 | .025 |
| CU-131-5 | Above 1/2 thru 5/8 | .812 | .027 | .125 | .025 |
| CU-131-6 | Above 5/8 thru 3/4 | .875 | .027 | .125 | .025 |
| CU-131-7 | Above 3/4 thru 7/8 | .937 | .027 | .125 | .025 |
| CU-131-8 | Above 7/8 thru 1-1/16 | 1.000 | .027 | .125 | .025 |
| CU-131-9 | Above 1-1/16 thru 1-1/4 | 1.125 | .027 | .125 | .032 |
| CU-131-10 | Above 1-1/4 thru 1-1/2 | 1.250 | .027 | .125 | .032 |



13/64 DIA.



SECTION A-A

NOTICE TO PERSONS RECEIVING THIS DRAWING
 THE TECHNICAL MATERIEL CORPORATION claims proprietary right in the title of this drawing. This drawing is issued in confidence for engineering information only and may not be reproduced or used to manufacture anything shown herein without permission from THE TECHNICAL MATERIEL CORPORATION to the user. This drawing is loaned for mutual assistance and is subject to recall at any time.

Property of:
 THE TECHNICAL MATERIEL CORPORATION
 MAMARONECK, NEW YORK

NOTE: MATERIAL: ALUMINUM
 FINISH: S404-YELLOW IRIDITE

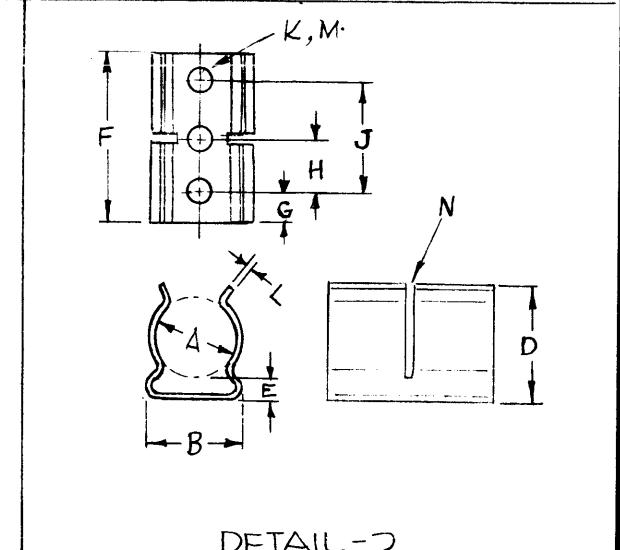
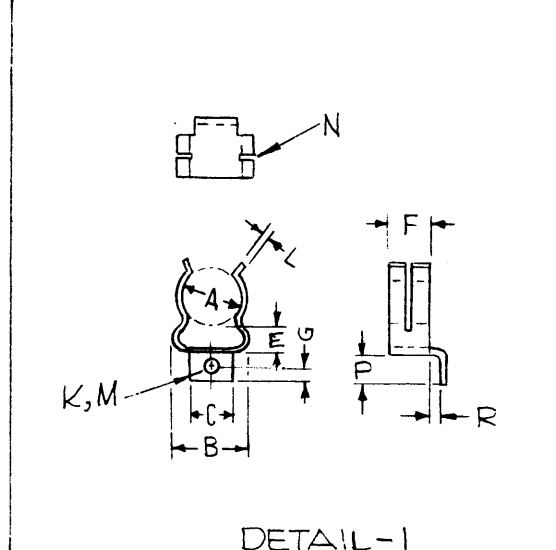
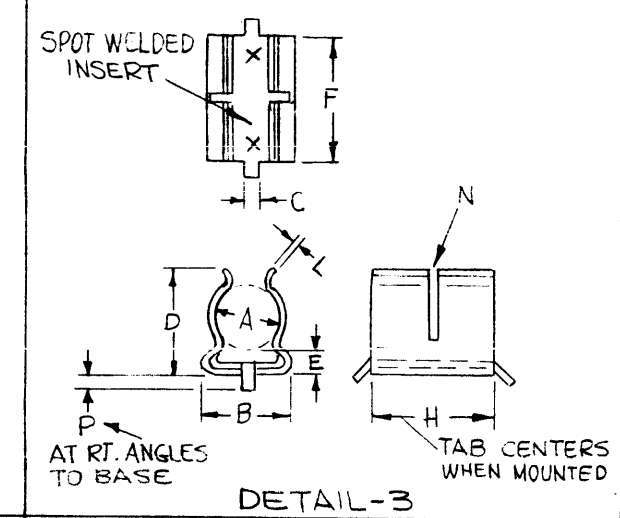
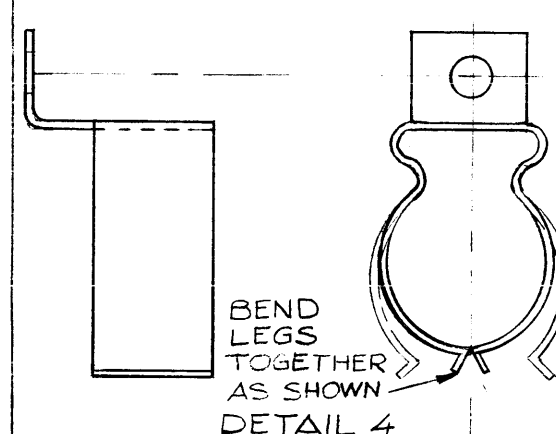
| | | |
|-----------|--------------------|--|
| REQ. ITEM | PART NO. | DESCRIPTION |
| | | THE TECHNICAL MATERIEL CORPORATION MAMARONECK, NEW YORK |
| | STOCK SIZE | CLAMP, CABLE |
| | MATERIAL | |
| | TYPE & TEMPER | 1017-10-9-53 |
| | HEAT TREAT. SPEC. | 1017-10-9-53 |
| | FINISH & SPEC. NO. | 1017-10-9-53 |
| | | DRAWN |
| | | CHECKED |
| | | FINAL |
| | | ELEC. DES. APP. MECH. DES. APP. |
| | | CU-131 |

| | | | | | | |
|--|-------------------------|-------------|-----------|--------|-----------|-----------|
| ISSUE ITEM | CHANGED FROM | DATE | CH. NO. | DRAFTS | CHECKER | ENG. APP. |
| A 1 | FINISH WAS ANODIZED #35 | 02-03-55 | 9376 | | R. B. HBB | |
| TOLERANCES | | | | | | |
| SCALE: 5401-76 (C3064E) | | | | | | |
| MAXIMUM ALLOWABLE TOLERANCES HAVE BEEN DETERMINED AND ANY DEVIATIONS WILL BE CAUSE FOR REJECTION. REMOVE ALL BURRS AND SHARP EDGES | | | | | | |
| DEC. DIM. ± | | | | | | |
| FRAC. DIM. ± | | | | | | |
| ANGULAR DIM. ± | | | | | | |
| REQ. PER UNIT | MODEL | PROJECT NO. | ASSY. NO. | DATE | | |
| | | | | | USED ON | |

| TMC P/N | MFG P/N | DETAIL NO. | A ±.010 ±.005 | B ±.010 | C ±.005 | D ±.010 | E ±.010 | F ±.010 | G ±.005 | H ±.005 | J ±.005 | K DIA ±.003 ±.001 | L ±.002 ±.001 | M NO. OF HOLES | N NO. OF SLOTS | P ±.010 | R ±.010 ±.000 |
|---------|-----------|------------|---------------------|------------|------------|------------|------------|------------|------------|------------|------------|-------------------------|---------------------|-------------------|-------------------|------------|---------------------|
| CU133 | 6009-36CC | 1 | .312 | .341 | .250 | .385 | .066 | .218 | .109 | - | - | .093 | .016 | 1 | - | .218 | .131 |
| CU133-2 | 6001-51CC | 2 | .375 | .395 | - | .457 | .078 | 1.500 | .187 | .562 | 1.125 | .093 | .010 | 3 | - | - | - |
| CU133-3 | 6001-56CC | 2 | .375 | .395 | - | .457 | .078 | .750 | .156 | .437 | - | .093 | .010 | 2 | - | - | - |
| CU133-4 | 6029-1CC | 3 | .312 | .333 | .046 | .377 | .067 | .476 | - | .500 | - | - | .010 | - | - | .140 | - |
| CU133-5 | 6015-14A | 2 | .175 | .195 | - | .250 | .062 | .250 | .125 | - | - | .093 | .010 | 1 | 0 | - | - |
| CU133-6 | 6009-3600 | 4 | .312 | .341 | .250 | .385 | .066 | .218 | .109 | - | - | .093 | .016 | 1 | - | .218 | .131 |

| REVISIONS | | | | | | |
|-----------|---|---------|------------|-------|------|------|
| SYM | DESCRIPTION | DATE | E.M.N. NO. | DRAFT | CHKD | APPD |
| A | REVISED & REDRAWN | 7-29-64 | 11983 | SRG | SRG | SRG |
| B | CU133-5 ADDED TO CHART CHART UPDATED | 8.26.64 | 12205 | WFB | WFB | WFB |
| C | TMC P/N: CU133 WAS CU133-1 | 1-5-65 | 13202 | SRG | SRG | SRG |
| D | ADD DET. 4 & CU133-6 TO P/N CHT. | 5.8.69 | 19414 | GE | GE | GE |

NOTE ~ MAKE FROM CU133-1



NOTE:
SLOT WIDTH .031 ±.010 EVENLY SPACED

| REQ'D. | ITEM | PART NUMBER | DESCRIPTION | SYMBOL |
|---|------|------------------------------|--------------|----------------|
| LIST OF MATERIAL | | | | |
| MATERIAL | | THE TECHNICAL MATERIEL CORP. | | |
| BERYLLIUM COPPER | | MAMARONECK, NEW YORK | | |
| FINISH | | TITLE | | |
| CADMIUM PLATE | | CLIP, HEAT SINK | | |
| UNLESS OTHERWISE SPECIFIED DIMENSIONS ARE IN INCHES AND INCLUDE CHEMICALLY APPLIED OR PLATED FINISHES | | DRAWN SRG | DATE 7-29-64 | FINAL APPROVAL |
| | | CHECKED | DATE 7/30/64 | |
| | | ELECT. DES. | DATE | CU133 |
| | | MECH. DES. | DATE 7/31/64 | |
| | | SHEET | | REV. LTR. |

| QTY./UNIT | MODEL USED ON | ASS'Y. NO. |
|-----------|---------------|------------|
| SCALE | CODE C | 5401-105 |

NOTES

THE CONTENTS OF THIS DRAWING ARE THE EXCLUSIVE PROPERTY OF THE TECHNICAL MATERIEL CORP. ITS UNAUTHORIZED USE OR REPRODUCTION IN WHOLE OR IN PART IS STRICTLY FORBIDDEN.

DECIMALS
.X ± .05
.XX ± .01
.XXX ± .005

TOLERANCES

FRACTIONS
± 1/64
ANGLES
± 0° 30'

| TMC PART NO. | MAUFACTURER'S PART NO. | FIG | A | B ±1/32 | C° | D | E° | F | G° | REMARKS |
|--------------|------------------------|-----|-------|---------|----|-------|-----|------|-----|-----------------------------|
| CU-141-1 | 164F9-183D | 1 | 1.375 | 29/32 | 30 | 3/4 | 210 | 10MS | 243 | |
| CU-141-2 | 164GA2-803T | 1 | 2.500 | 1 3/4 | 29 | 1 3/4 | 209 | 10MS | 245 | 1/8 OFFSET BRACKET |
| CU-141-3 | 164GA3-803T | 1 | 2.500 | 1 3/4 | 29 | 1 3/4 | 209 | 10MS | 245 | 1/8 OFFSET BRACKET OPEN END |

| REVISIONS | | | | | |
|-----------|----------------|---------|------------|-------------------|------------------------|
| SYM | DESCRIPTION | DATE | E.M.N. NO. | DRAFT | CHKD APPD |
| A | CU-141-3 ADDED | 6-26-63 | 9375 | <i>(initials)</i> | <i>file</i> <i>WJH</i> |

NOTICE TO PERSONS RECEIVING THIS DRAWING

THE TECHNICAL MATERIEL CORP. CLAIMS PROPRIETARY RIGHT IN THE MATERIAL DISCLOSED HEREON. THIS DRAWING IS ISSUED IN CONFIDENCE FOR ENGINEERING INFORMATION ONLY AND MAY NOT BE REPRODUCED OR USED TO MANUFACTURE ANYTHING SHOWN HEREON WITHOUT PERMISSION FROM THE TECHNICAL MATERIEL CORPORATION TO THE USER. THIS DRAWING IS LOANED FOR MUTUAL ASSISTANCE AND IS SUBJECT TO RECALL AT ANY TIME.

Property of:

THE TECHNICAL MATERIEL CORPORATION
MAMARONECK, NEW YORK

- MATERIAL - 18% NICKEL SILVER
- BAND - .020 THK - SPRING TEMPER
- BRACKET - .032 THK - 1/4 HARD
- LEVER - .032 THK - 1/4 HARD
- SPRING - .061 RD - SPRING TEMPER
- PIN - .062 RD - FULL HARD

FINISH - NITRIC ACID DIP IMMUNIZATION

TOLERANCE - UNLESS OTHERWISE SPECIFIED ±1/64 ±5°

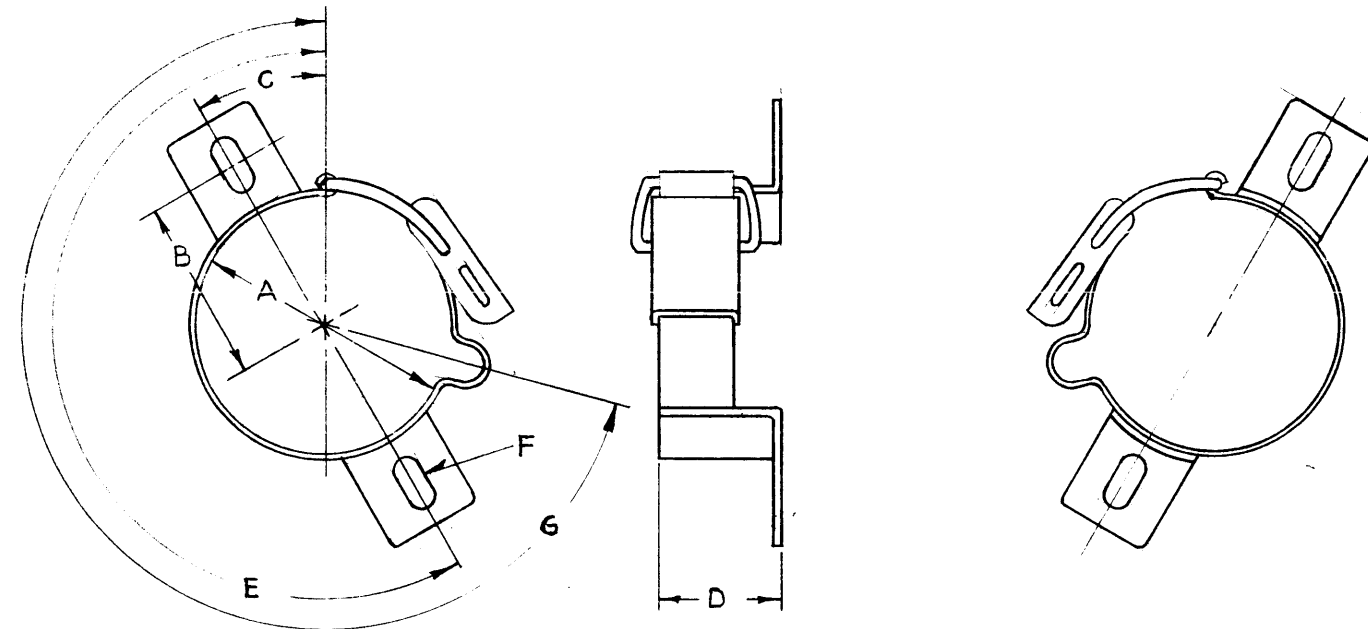


FIG-1

FIG-2

| REQ'D. | ITEM | PART NUMBER | DESCRIPTION | SYMBOL |
|---|------|--|-----------------|--------------------------------------|
| LIST OF MATERIAL | | | | |
| MATERIAL | | THE TECHNICAL MATERIEL CORP. STRUMER MAMARONECK, NEW YORK | | |
| FINISH | | TITLE CLAMP, CAPACITOR, MOUNTING | | |
| UNLESS OTHERWISE SPECIFIED DIMENSIONS ARE IN INCHES AND INCLUDE CHEMICALLY APPLIED OR PLATED FINISHES | | DRAWN T. RAMIREZ | DATE 8/27/62 | FINAL APPROVAL <i>(Signature)</i> |
| | | CHECKED <i>(Signature)</i> | DATE 7/9/63 | DATE |
| | | ELECT. DES. <i>(Signature)</i> | DATE 4-15-63 | CU-141 |
| | | MECH. DES. <i>(Signature)</i> | DATE 4-9-63 | A |
| | | | SHEET | REV. LTR. |

| | | |
|---|---------------|------------|
| 1 EA | TRX-1 | |
| Q'TY./UNIT | MODEL USED ON | ASS'Y. NO. |
| SCALE | CODE | S-401-105 |
| THE CONTENTS OF THIS DRAWING ARE THE EXCLUSIVE PROPERTY OF THE TECHNICAL MATERIEL CORP. ITS UNAUTHORIZED USE OR REPRODUCTION IN WHOLE OR IN PART IS STRICTLY FORBIDDEN. | | |

NOTES

5

4

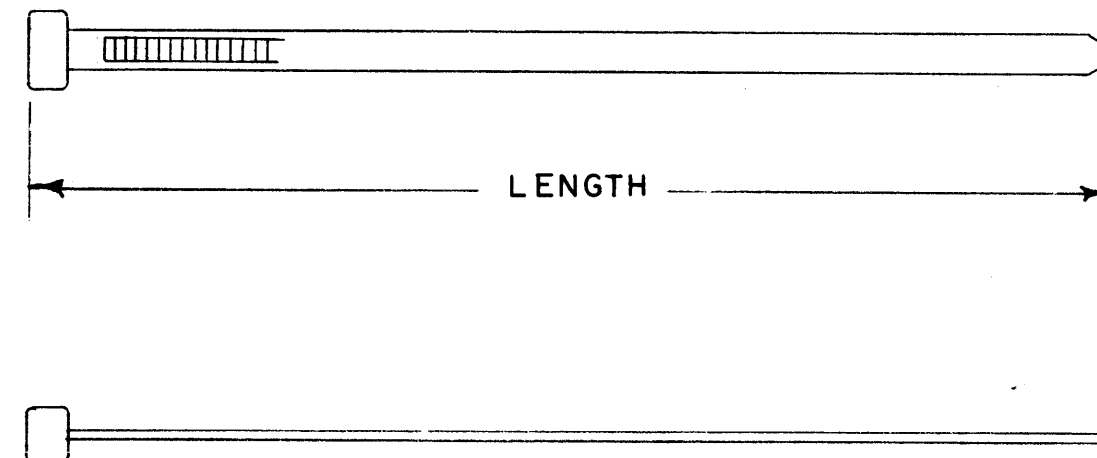
3

2

1

| REVISIONS | | | | | | |
|-----------|-----|-------------------|--------|----------|-------|-----------|
| ZONE | LTR | DESCRIPTION | DATE | E.M.N.NO | DRAFT | CHKD APPD |
| | H | REVISED & REDRAWN | 3-2-71 | 20236 | RJ | YCS |

| TMC P/N | MS PART NUMBER | INSTALL TOOL | MFG. PART NO. | BUNDLE DIA. | | LENGTH |
|-----------|----------------|--------------|-------------------|-------------|--------|--------|
| | | | | MIN | MAX | |
| CUI42 - 1 | OBSOLETE | | | | | |
| - 2 | MSI7821-1-9 | * | S401-377(SST2S) | 1/16 | 1- 3/4 | 6 3/4 |
| - 3 | OBSOLETE | | | | | |
| - 4 | OBSOLETE | | | | | |
| - 5 | OBSOLETE | | | | | |
| - 6 | MSI7821-4-9 | * | (SSTIM)S-401-377 | 1/16 | 3/4 | 4.0 |
| - 7 | OBSOLETE | | | | | |
| - 8 | OBSOLETE | | | | | |
| - 9 | MSI7821-2-9 | * | S401-377(SST4S) | 1/16 | 4 | 15.0 |
| - 10 | ** | | S401-377(SST15M) | 1/16 | 1- 1/4 | 5 1/2 |
| - 11 | MSI8034-5 | | S401-377(SST1.5I) | 1/16 | 1- 1/4 | 5 1/2 |
| - 12 | MSI8034-7 | | S401-377(SST3I) | 1/16 | 3 | 11.0 |
| - 13 | | | S401-377(SST2I) | 1/16 | 2 | 8.0 |
| - 14 | MSI7821-3 | | S401-377(SST4H) | 1/16 | 4 | 15.0 |



* NO INSTALLATION TOOL REQUIRED FOR FIELD INSTALLATION AND PROTOTYPE USE. FOR PRODUCTION USE TOOL MSI7823.

** MEETS THE SAME MIL SPEC AS MSI7821-4 EXCEPT ACCOMODATES A LARGER BUNDLE DIAMETER.

NOTE:

VENDOR S401-377 RECOMENDED SOURCE
 VENDOR S401-35 ALTERNATE SOURCE

| REQ'D | ITEM | PART NUMBER | DESCRIPTION | SYM. |
|---|------|---|--|------|
| LIST OF MATERIAL | | | | |
| THE TECHNICAL MATERIEL CORP. MAMARONECK, NEW YORK STRAP, CABLE ADJUTABLE, PLASTIC | | | | |
| FINAL APPROVAL | | DATE | SIZE B CODE IDENT. NO. 82679 DWG NO. CU142 ISSUE H | |
| MECH. DES. | | DATE | | |
| ELECT. DES. | | DATE | | |
| CHECKED | | DATE | | |
| DRAWN <i>R. Forlano</i> | | DATE 3-3-71 | | |
| MATERIAL | | FINISH S401-35(TY) S401-377(SST & SSC) | | |
| SCALE ~ | | SHEET 1 OF 1 | | |

| QTY / UNIT | MODEL USED ON | ASS'Y NO. |
|-------------|---------------|-----------|
| APPLICATION | | |
| CODE | | |

NOTICE TO PERSONS RECEIVING THIS DRAWING
 THE TECHNICAL MATERIEL CORPORATION claims proprietary right in the material disclosed hereon. This drawing is issued in confidence for engineering information only and may not be reproduced or used to manufacture anything shown hereon without permission from THE TECHNICAL MATERIEL CORPORATION to the user. This drawing is loaned for mutual assistance and is subject to recall at any time.

5

4

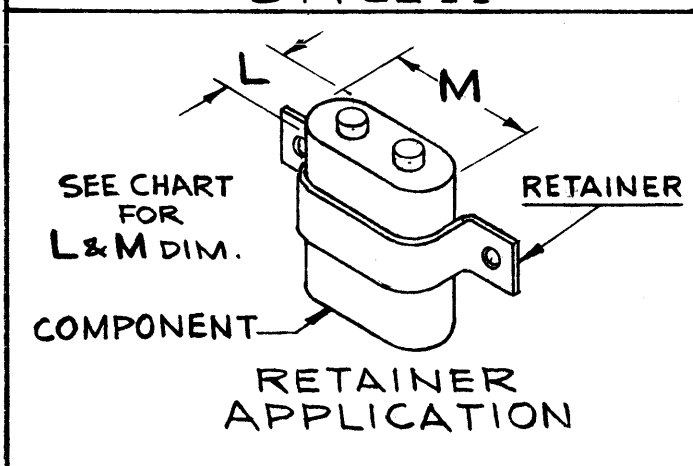
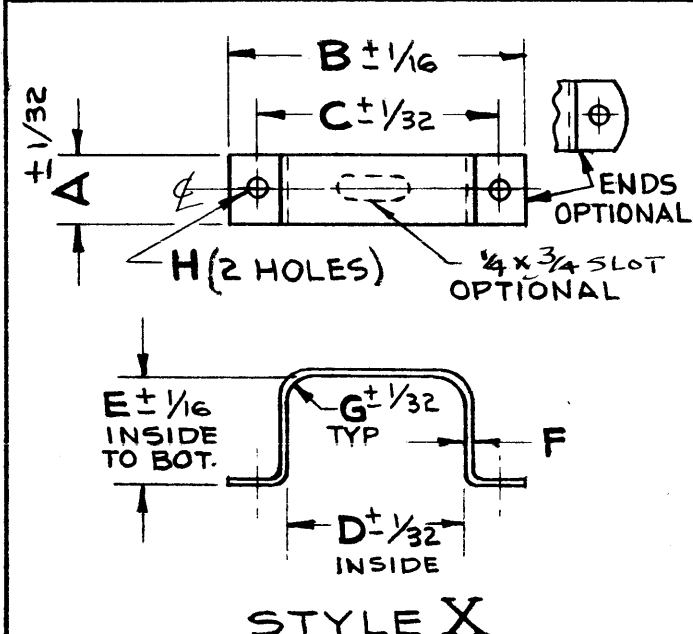
3

2

1

| | | | DIMENSIONS | | | | | | | | FOR COMPONENT SIZE | | FOR USE WITH TMC CAPACITOR NO. |
|----------|----------|-------|------------|---------|--------|--------|--------|------|-----|------|--------------------|--------|--------------------------------|
| TMC NO. | MFRS NO. | STYLE | A | B | C | D | E | F | G | H | L | M | |
| CU-143-1 | 36-928 | X | 3/4 | 2 15/16 | 2 9/16 | 2 3/32 | 1 7/32 | .030 | 5/8 | .188 | 1 5/16 | 2 5/32 | CP-113-1 |

| REVISIONS | | | | | | |
|-----------|-------------|------|------------|-------|------|------|
| SYM | DESCRIPTION | DATE | E.M.N. NO. | DRAFT | CHKD | APPD |
| | | | | | | |



SPECIFICATIONS:

1. MATERIAL: STEEL
2. STOCK SIZE: SEE CHART DIM "F"
3. FINISH: CADMIUM PLATE

NOTICE TO PERSONS RECEIVING THIS DRAWING

THE TECHNICAL MATERIEL CORPORATION claims proprietary right in the material disclosed herein. This drawing is issued in confidence for engineering information only and may not be reproduced or used to manufacture anything shown hereon without permission from THE TECHNICAL MATERIEL CORPORATION to the user. This drawing is loaned for mutual assistance and is subject to recall at any time.

Property of:
THE TECHNICAL MATERIEL CORPORATION
MAMARONECK, NEW YORK

NOTES

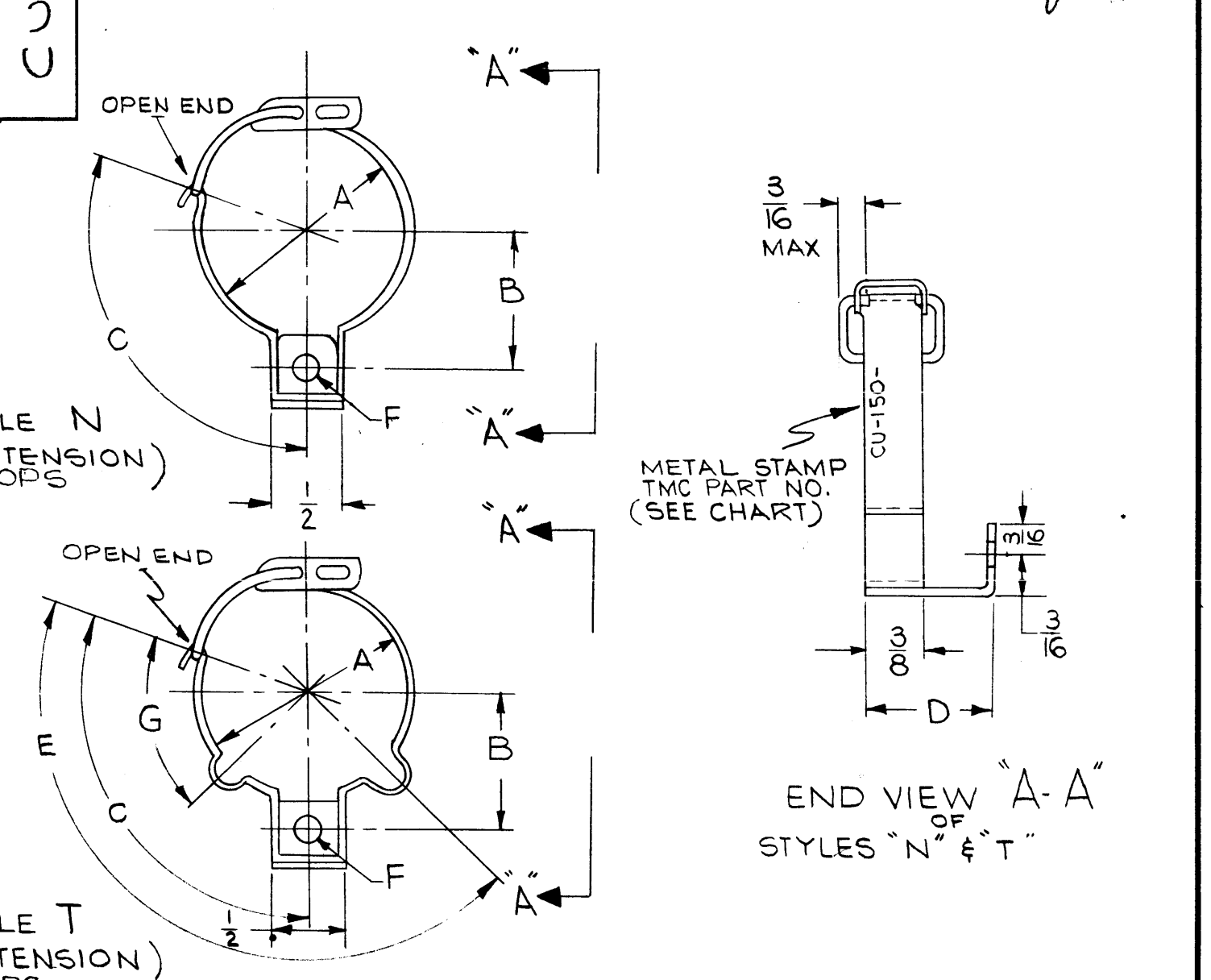
| | | |
|------------|---------------|------------|
| Q'TY./UNIT | MODEL USED ON | ASS'Y. NO. |
| | RAK-21 | |
| SCALE | CODE | 5401-49 |

THE CONTENTS OF THIS DRAWING ARE THE EXCLUSIVE PROPERTY OF THE TECHNICAL MATERIEL CORP. ITS UNAUTHORIZED USE OR REPRODUCTION IN WHOLE OR IN PART IS STRICTLY FORBIDDEN.

| REQ'D. | ITEM | PART NUMBER | DESCRIPTION | SYMBOL |
|---|------|--|-------------|----------------|
| | | | | |
| LIST OF MATERIAL | | | | |
| MATERIAL | | THE TECHNICAL MATERIEL CORP. MAMARONECK, NEW YORK | | |
| FINISH | | TITLE RETAINER, CAPACITOR | | |
| UNLESS OTHERWISE SPECIFIED DIMENSIONS ARE IN INCHES AND INCLUDE CHEMICALLY APPLIED OR PLATED FINISHES | | DRAWN | DATE | FINAL APPROVAL |
| DECIMALS .X ± .05 .XX ± .01 .XXX ± .005 | | | 12-11-62 | |
| FRACTIONS ± 1/64 ANGLES ± 0° 30' | | CHECKED | DATE | |
| TOLERANCES | | | 2/11/63 | |
| | | ELECT. DES. | DATE | |
| | | | 2/11/63 | |
| | | MECH. DES. | DATE | |
| | | | 2-8-63 | |
| SHEET | | | | REV. LTR. |

| TMC PART NO. | MFRS. REF. | MFRS. PART NO. | STYLE (SEE) (PICT) | DIMENSIONS | | | | | | | FOR USE WITH COMP. TYPE | FOR BASIC JETEC BASE TYPE |
|--------------|------------|----------------|--------------------|----------------------|---------|------|-------|------|------|------|----------------------------|---------------------------|
| | | | | A DIA. TO BE CLAMPED | B ±1/32 | C | D | E | F | G | | |
| CU-150-1 | A, B | | N | 1.255 | 3/4 | 120° | 11/16 | NONE | .187 | NONE | 5Y3GT RR-110 | B8-6 B8-58 |
| CU-150-2 | A, B | | N | 1.156 | 3/4 | 120° | 11/16 | NONE | .187 | NONE | OA3 | B8-1 |
| CU-150-3 | A, B | | N | 1.375 | 3/4 | 120° | 7/8 | NONE | .187 | NONE | 6Y6 | B8-11 |
| CU-150-4 | A, B | | N | 1.500 | 3/4 | 35° | 1 | NONE | .187 | NONE | RL158 | |
| CU-150-5 | A, B | | N | 1.375 | 3/4 | 35° | 1 1/4 | NONE | .187 | NONE | CE61, 2 3, T2 (CASE) | |
| CU-150-6 | A, B | | N | 1.375 | 3/4 | 120° | 11/16 | NONE | .187 | NONE | 5U4G | |

| REVISIONS | | | | | | |
|-----------|---|----------|------------|-------|------|------|
| SYM | DESCRIPTION | DATE | E.M.N. NO. | DRAFT | CHKD | APPD |
| A | S401-254 ADDED TO CODE BLOCK | 11/3/63 | 10743 | LD | LD | WLB |
| B | CU150-4 & CU150-5 ADDED | 1/20/64 | 11278 | A.M. | JDe | LB |
| C | ON CHART ±1/32 ADD TO "B" ON CU-150-4 "C" WAS 30° ON CU-150-5 "C" WAS 30° | 8.26.64 | 12225 | JTB | JTB | JTB |
| D | ON CHART CU-150-4 & 5 "C" WAS 30-35° | 10.12.64 | 12687 | JL | JL | JL |
| E | CU150-6 ADDED. | 3.22.65 | 13756 | JL | JL | JL |



- SPECIFICATIONS**
- FOR USE WITH SOCKET TS-101 WITH 3/16 CROWN
 - TYPE: PINLESS, OPEN END
 - MATERIALS: ALL PARTS, STAINLESS STEEL 302, PASSIVATED
 - BAND: .020 THK, SPRING TEMPER
 - BRACKET: .032 THK, 1/4 HARD
 - LEVER: .032 THK, 1/4 HARD
 - SPRING: .061 RD., SPRING TEMPER
 - ALL ANGLES: TOL. ±5°

STANDARD DRAWING

| STANDARD | | |
|------------|--------------------------------------|------------|
| Q'TY./UNIT | MODEL USED ON | ASS'Y. NO. |
| NONE | MFGR. A-S401-105 MFGR. B-S401-254 | |

NOTES

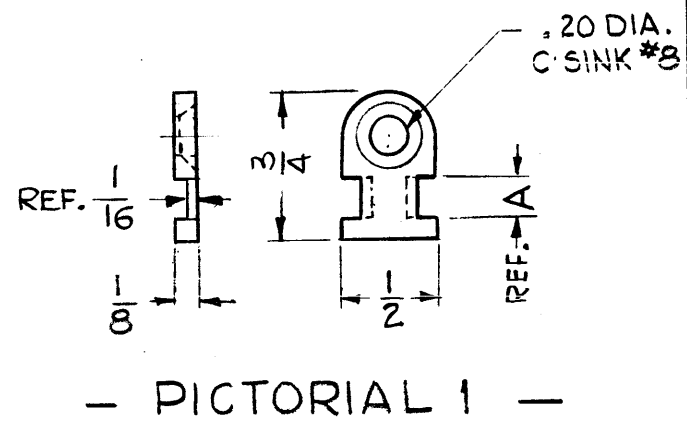
THE CONTENTS OF THIS DRAWING ARE THE EXCLUSIVE PROPERTY OF THE TECHNICAL MATERIEL CORP. ITS UNAUTHORIZED USE OR REPRODUCTION IN WHOLE OR IN PART IS STRICTLY FORBIDDEN.

| REQ'D. | ITEM | PART NUMBER | DESCRIPTION | SYMBOL |
|---|------|--------------|--|--------|
| PRITCHARD LIST OF MATERIAL | | | | |
| MATERIAL | | | THE TECHNICAL MATERIEL CORP. MAMARONECK, NEW YORK | |
| FINISH | | | TITLE RETAINER, ELECT. TUBE | |
| UNLESS OTHERWISE SPECIFIED DIMENSIONS ARE IN INCHES AND INCLUDE CHEMICALLY APPLIED OR PLATED FINISHES | | | | |
| DRAWN <i>Adams</i> | | DATE 10-1-63 | FINAL APPROVAL <i>BP</i> | |
| CHECKED <i>Hile</i> | | DATE 10-1-63 | DATE | |
| ELECT. DES. | | DATE | SHEET | |
| MECH. DES. <i>Law Gabel</i> | | DATE 10-1-63 | REV. LTR. | |

| CHART I | | | | |
|--------------|-----------|------------------|----------------------|-----------|
| TMC PART NO. | MFGR. NO. | STRAP WIDTH MAX. | DIMENSION "A" (REF.) | PICTORIAL |
| CU-151 -1 | TC-102 | .20 | 7/32 | 1 |

| CHART 2 | |
|---------|----------------------|
| CODE | COLOR TO MIL-STD-104 |
| 0 | BLACK |
| 1 | BROWN |
| 2 | RED |
| 3 | ORANGE |
| 4 | YELLOW |
| 5 | GREEN |
| 6 | BLUE |
| 7 | PURPLE |
| 8 | GRAY |
| 9 | NATURAL (WH) |

| REVISIONS | | | | | |
|---|-------------|------|------------|-------|-----------|
| SYM | DESCRIPTION | DATE | E.M.N. NO. | DRAFT | CHKD APPD |
| <u>SPECIFICATIONS</u> | | | | | |
| 1 - TEMPERATURE RANGE: -65° TO + 350°F. | | | | | |
| 2 - MELTING POINT: 480°F. | | | | | |
| 3 - MATERIAL: NYLON | | | | | |
| <u>NOTES</u> | | | | | |
| 1. USED WITH CU-142 | | | | | |



PURCHASING INFORMATION: MFGRS. NO. WILL BE AS FOLLOWS

TC - 102 - 4
 BASIC NUMBER (SEE CHART 1) COLOR (SEE CHART 2)
 OMIT IF NATURAL WHITE IS REQD.

TMC PART NO. SHALL BE IN THE FOLLOWING FORM:

CU-151 -1 - 9
 BASIC TMC NO. AND STYLE (SEE CHART 1) COLOR (SEE CHART 2)

| REQ'D. | ITEM | PART NUMBER | DESCRIPTION | SYMBOL |
|---|------|--|------------------|----------------------|
| LIST OF MATERIAL | | | | |
| MATERIAL | | THE TECHNICAL MATERIEL CORP. MAMARONECK, NEW YORK | | |
| FINISH | | TITLE RETAINER, CABLE STRAP | | |
| UNLESS OTHERWISE SPECIFIED DIMENSIONS ARE IN INCHES AND INCLUDE CHEMICALLY APPLIED OR PLATED FINISHES | | DRAWN G.D.L. | DATE 10-17-63 | FINAL APPROVAL BP |
| | | CHECKED Jude | DATE 11-5-63 | |
| | | ELECT. DES. JC | DATE 11-7-63 | |
| | | MECH. DES. | DATE | |
| | | | | SHEET |
| | | | | REV. LTR. |

NOTES

| Q'TY./UNIT | MODEL USED ON | ASS'Y. NO. |
|--------------|---------------|------------|
| SCALE 1:1 | CODE C | S-401-35 |

THE CONTENTS OF THIS DRAWING ARE THE EXCLUSIVE PROPERTY OF THE TECHNICAL MATERIEL CORP. ITS UNAUTHORIZED USE OR REPRODUCTION IN WHOLE OR IN PART IS STRICTLY FORBIDDEN.

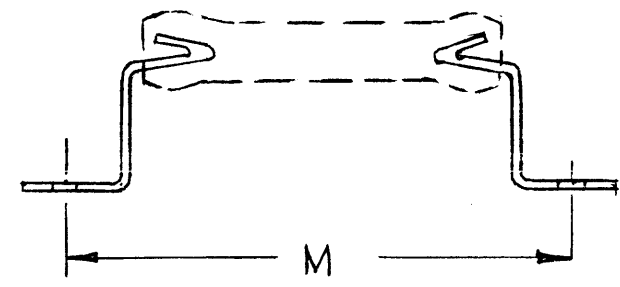
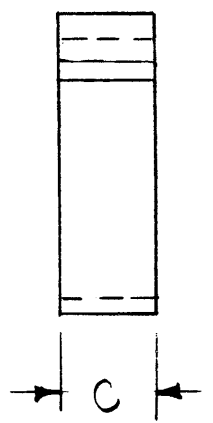
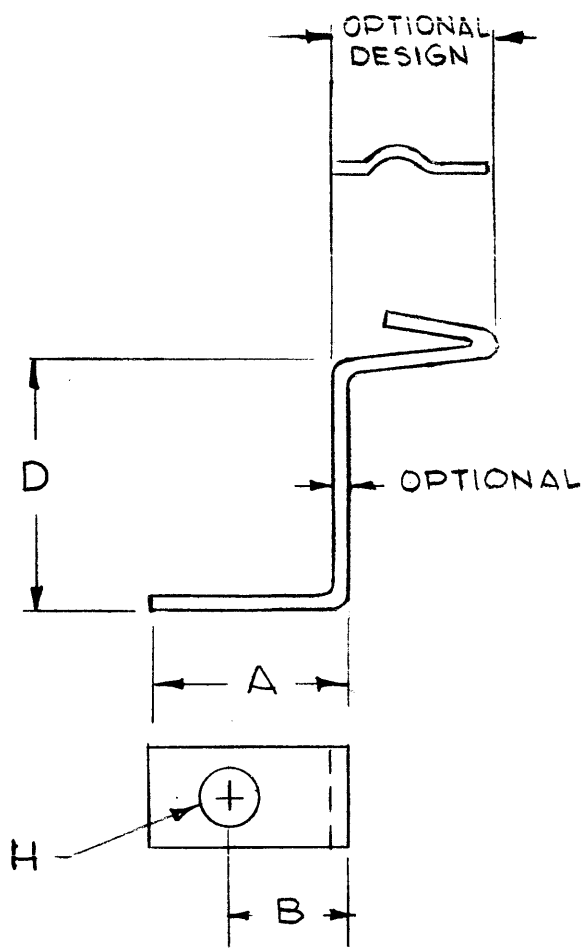
| DECIMALS | TOLERANCES | FRACTIONS |
|-------------|------------|-----------|
| .X ± .05 | | ± 1/64 |
| .XX ± .01 | | ANGLES |
| .XXX ± .005 | | ± 0° 30' |

STANDARD DRAWING

| TMC PART NO. | MFG | MFGS TYPE | DIMENSIONS | | | | | RESISTOR I.D | M | DESIGNED TO FIT TMC NO |
|--------------|-----|-----------|------------|----------|-----|----------|-------|--------------|-------|------------------------|
| | | | A ± 1/32 | B ± 1/32 | C | D ± 1/32 | H DIA | | | |
| CU164-1 | A | 829 | 3/8 | 3/16 | 1/4 | 9/32 | .144 | 3/16 | 2 1/8 | RW109 |
| | B | 5 | | | | | | | | |
| CU164-2 | A | 813 | 1/2 | 5/16 | 1/4 | 21/32 | .156 | 5/16 | 2 5/8 | RW110 |
| | B | 9 | | | | | | | | |

CU164

| REVISIONS | | | | | | |
|-----------|---------------------------|----------|------------|-------|------|--------------------|
| SYM | DESCRIPTION | DATE | E.M.N. NO. | DRAFT | CHKD | APPD |
| Ø | ORIGINAL RELEASE FOR PROD | 12/24/65 | Ø | | | <i>[Signature]</i> |



— TYPICAL MOUNTING —

— FOR PURCHASING ONLY —
 A 5401-32
 B 5401-378

NOTES

| | | |
|---|---------------|------------|
| AD117 | | |
| Q'TY./UNIT | MODEL USED ON | ASS'Y. NO. |
| SCALE DONUT SCALE | CODE C | |
| THE CONTENTS OF THIS DRAWING ARE THE EXCLUSIVE PROPERTY OF THE TECHNICAL MATERIEL CORP. ITS UNAUTHORIZED USE OR REPRODUCTION IN WHOLE OR IN PART IS STRICTLY FORBIDDEN. | | |

| REQ'D. | ITEM | PART NUMBER | DESCRIPTION | SYMBOL |
|---|------|--|-------------|--------------------|
| LIST OF MATERIAL | | | | |
| MATERIAL | | THE TECHNICAL MATERIEL CORP. MAMARONECK, NEW YORK | | |
| FINISH | | TITLE | | |
| ZINC OR CADMIUM PLATED | | RETAINER, RESISTOR | | |
| UNLESS OTHERWISE SPECIFIED DIMENSIONS ARE IN INCHES AND INCLUDE CHEMICALLY APPLIED OR PLATED FINISHES | | DRAWN | DATE | FINAL APPROVAL |
| | | G.D.L. | 12-13-65 | <i>[Signature]</i> |
| | | CHECKED | DATE | |
| | | <i>[Signature]</i> | 12-14-65 | |
| | | ELECT. DES. | DATE | |
| | | | | |
| | | MECH. DES. | DATE | |
| | | <i>[Signature]</i> | 12/14/65 | |
| | | SHEET | | REV. LTR. |
| | | CU164 | | Ø |

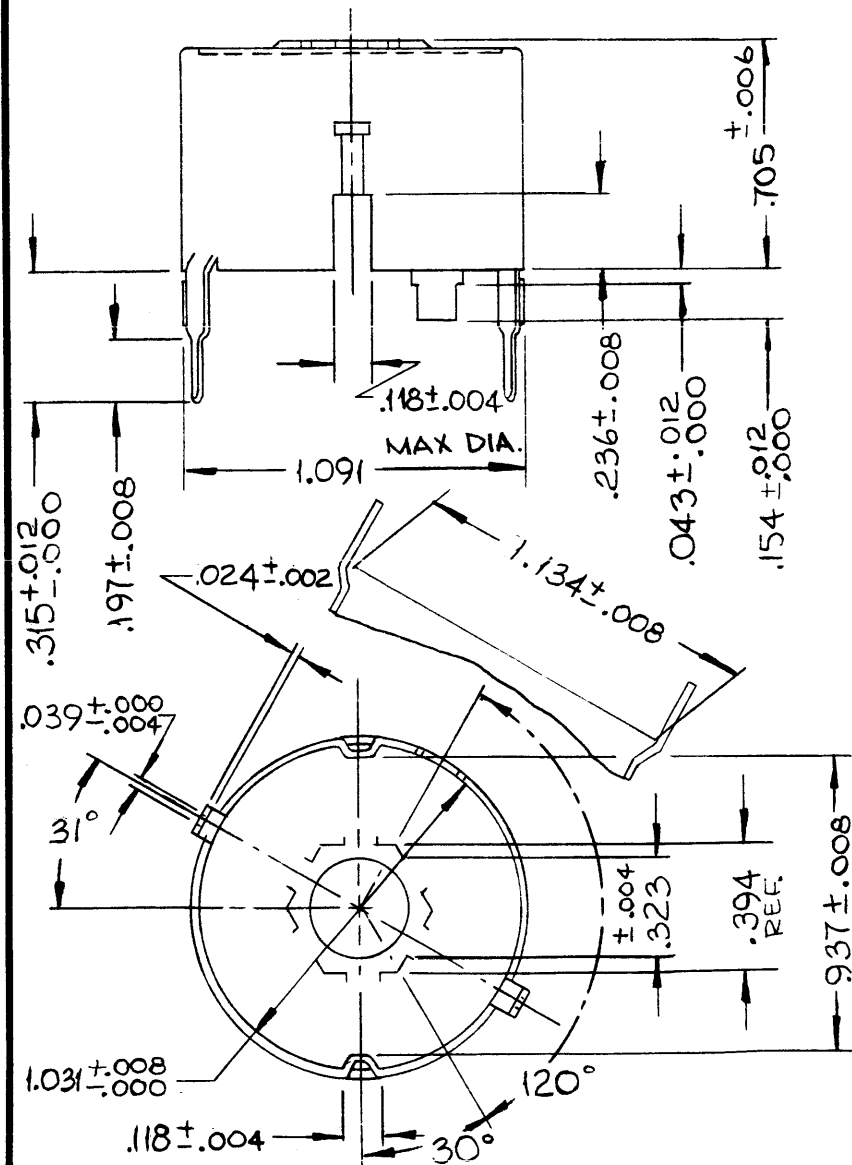
NOTE:

A COMPLETE SET OF CUI65 (2616HD) CONSISTS OF 1 EACH OF THE ITEMS SHOWN.

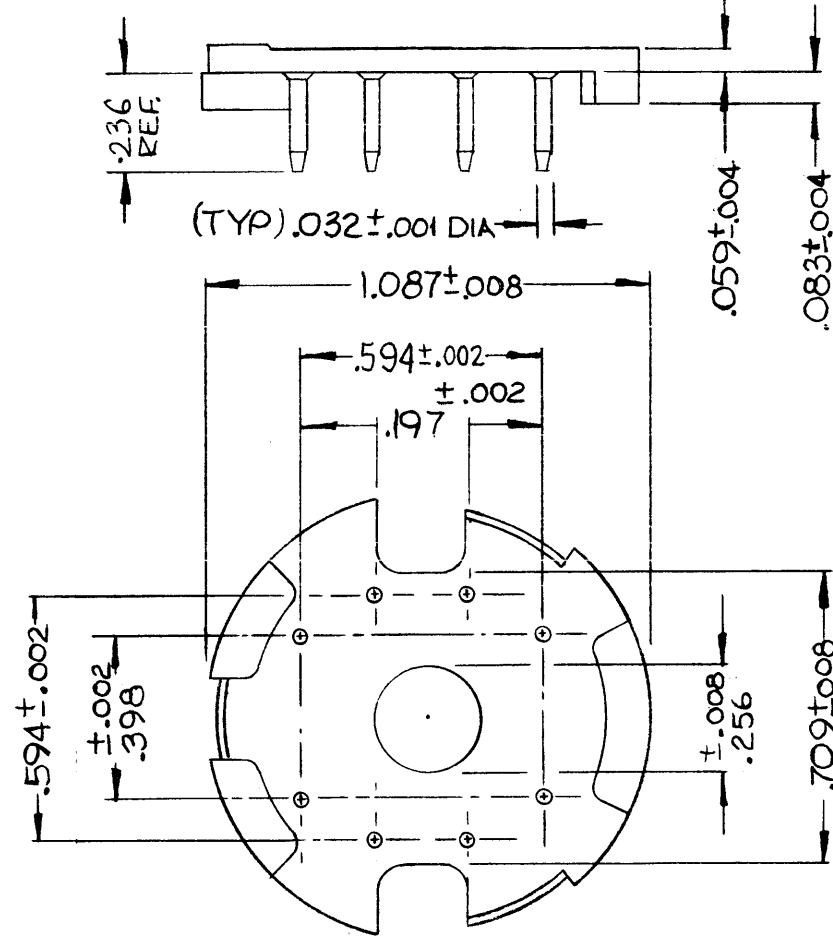
CUI65

REVISIONS

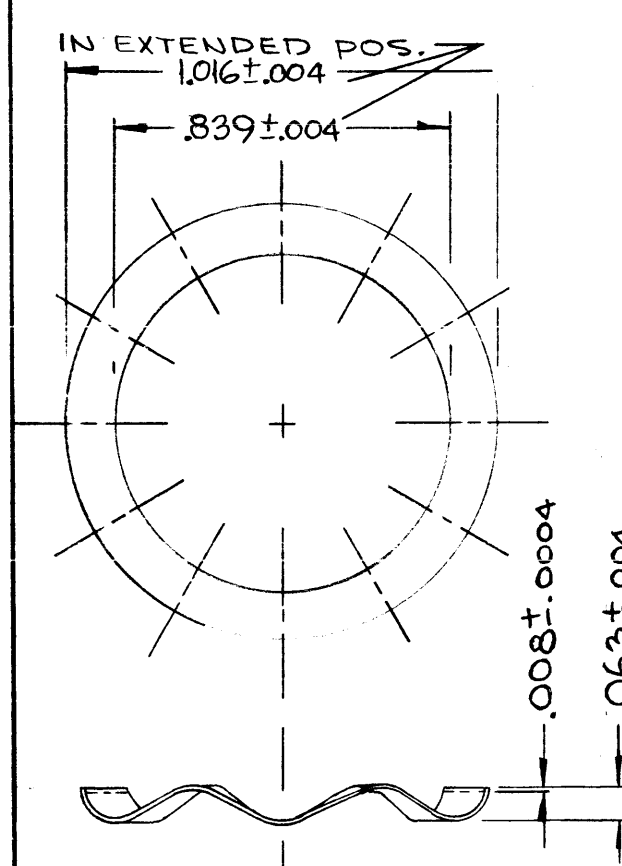
| SYM | DESCRIPTION | DATE | E.M.N. NO. | DRAFT | CHKD | APPD |
|-----|---------------------------------|----------|------------|-------|------|------|
| X1 | DWG REDRAWN FOR CLARIFICATION | 6.21.66 | - | Wto | File | AD |
| Ø | ORIGINAL RELEASE FOR PRODUCTION | 10/17/66 | Ø | CV | | |



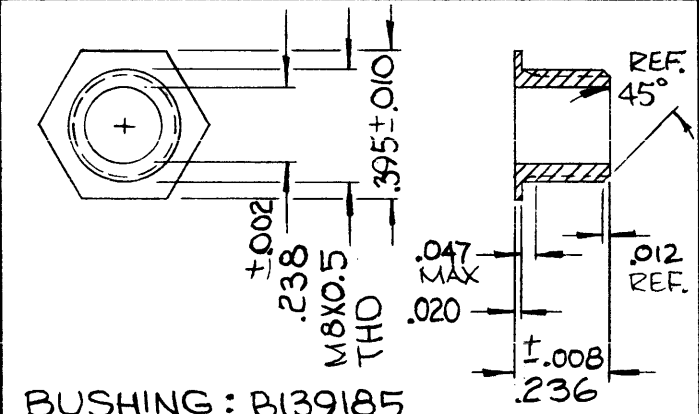
CONTAINER: B141050 (991-186-00)
MATERIAL: BRASS, NICKEL PLATED



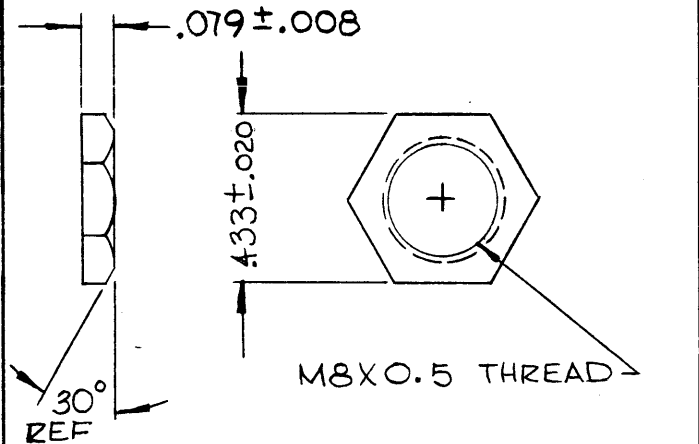
TAG PLATE: P4 057 28 (991-107-00)
MAT'L: REINFORCED POLYESTER
PINS: PHOSPHOR BRONZE
DIP SOLDERED



MAT'L: CHROME, NICKEL STEEL
SPRING: B14802 (991-110-00)



BUSHING: B139185
MATERIAL: ALUMINUM



BUSHING NUT: B143653
MATERIAL: BRASS
FINISH: NICKEL PLATED OR HOT TIN DIP.

NOTES

| Q'TY./UNIT | MODEL USED ON | ASS'Y. NO. |
|------------|---------------|------------------|
| | CFA-2 | |
| SCALE | CODE | S401-118(2616HD) |

THE CONTENTS OF THIS DRAWING ARE THE EXCLUSIVE PROPERTY OF THE TECHNICAL MATERIEL CORP. ITS UNAUTHORIZED USE OR REPRODUCTION IN WHOLE OR IN PART IS STRICTLY FORBIDDEN.

| REQ'D. | ITEM | PART NUMBER | DESCRIPTION | SYMBOL |
|---|------|-------------|--|--------------|
| DUDDLES LIST OF MATERIAL | | | | |
| MATERIAL | | | THE TECHNICAL MATERIEL CORP. MAMARONECK, NEW YORK | |
| SEE NOTES | | | TITLE | |
| SEE NOTES | | | RETAINER, PLUG-IN POT CORE | |
| UNLESS OTHERWISE SPECIFIED DIMENSIONS ARE IN INCHES AND INCLUDE CHEMICALLY APPLIED OR PLATED FINISHES | | | DRAWN Wto | DATE 5.17.66 |
| | | | CHECKED File | DATE 6-23-66 |
| | | | ELECT. DES. | DATE |
| | | | MECH. DES. | DATE |
| DECIMALS .X ± .05 .XX ± .01 .XXX ± .005 | | | FINAL APPROVAL MAY 10/17/66 | |
| FRACTIONS ± 1/64 ANGLES ± 0° 30' | | | CUI65 | |
| TOLERANCES | | | SHEET | |
| | | | REV. LTR. | |

M/L Q.B.

5

4

3

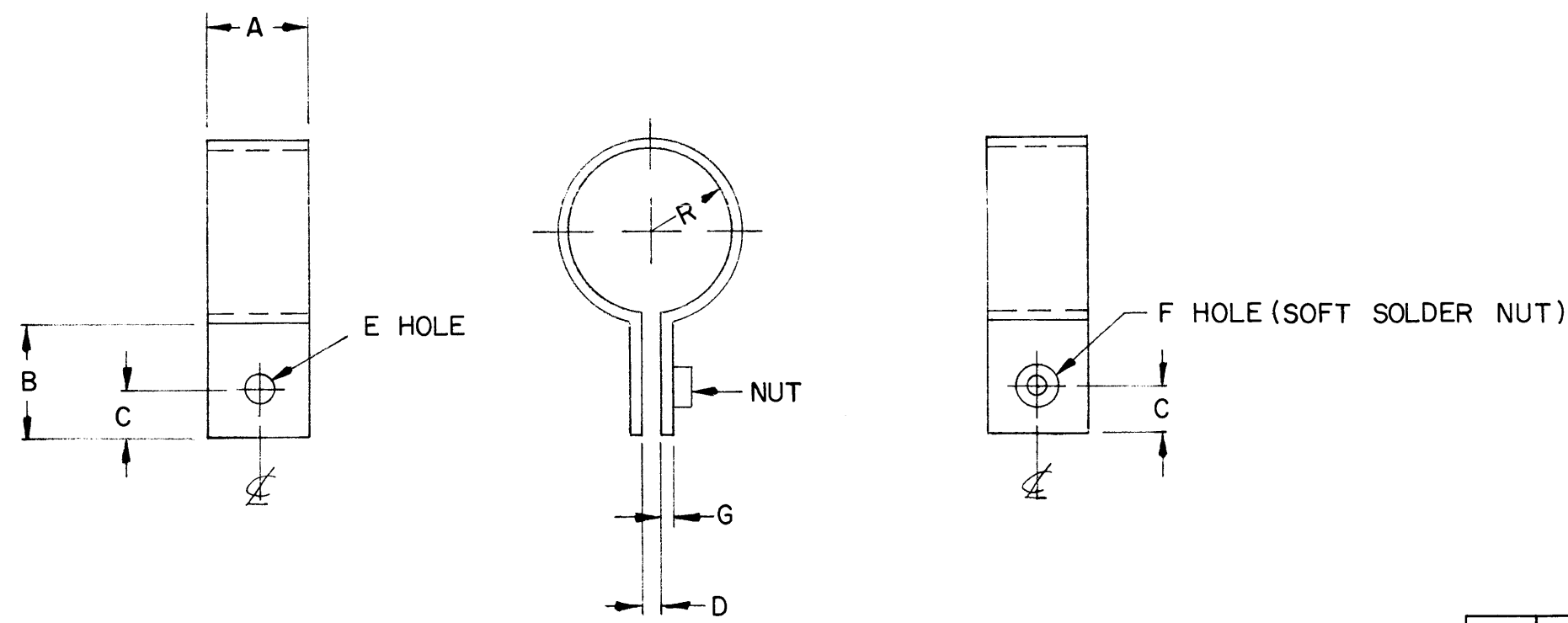
2

1

REVISIONS

| ZONE | LTR | DESCRIPTION | DATE | E.M.N.NO | DRAFT | CHKD | APPD |
|------|-----|-------------------|---------|----------|-------|------|------|
| | B | REVISED W/-2 ADD. | 6/16/71 | 20381 | GE | W | FB |

| TMC PART NUMBER | A | B | C | D | E | F | R | THICKNESS G | NUT | MATERIAL | FINISH |
|-----------------|-----|------|------|-----|------|-------------|-------|-------------|--------------|-------------------|-----------------------------------|
| CU 166-1 | 3/8 | 5/16 | 3/32 | 1/4 | 5/32 | .191 - .194 | 17/64 | .015 | NT 129-632-1 | HOT ROLLED COPPR. | S245 SIL. PLATE S423 SIL. KOTE |
| CU 166-2 | 3/8 | 1/2 | 3/16 | 1/8 | 5/32 | .191 - .194 | 13/32 | .035 | NT 129-632-3 | HOT ROLLED COPPR. | S245 SIL. PLATE S423 SIL. KOTE |



| REQ'D | ITEM | PART NUMBER | DESCRIPTION | SYM. |
|------------------------------------|------------------------------|-----------------------|---|------|
| <i>F. BUDETTI</i> LIST OF MATERIAL | | | | |
| FINAL APPROVAL <i>FB</i> | | DATE <i>6/17/71</i> | THE TECHNICAL MATERIEL CORP. MAMARONECK, NEW YORK | |
| MECH. DES. | | DATE | | |
| ELECT. DES. <i>FB</i> | | DATE <i>6/16/71</i> | | |
| CHECKED <i>W</i> | | DATE <i>6/16/71</i> | | |
| DRAWN <i>GE</i> | | DATE <i>6/16/71</i> | <i>CLAMP, RESISTOR</i> | |
| SIZE B | CODE IDENT. NO. 82679 | DWG NO. <i>CU 166</i> | | |
| SCALE | | SHEET | | OF |

| | | |
|---------------|---------------|-----------|
| <i>TLAAIK</i> | | |
| QTY / UNIT | MODEL USED ON | ASS'Y NO. |
| APPLICATION | | |
| CODE | | |

NOTICE TO PERSONS RECEIVING THIS DRAWING
THE TECHNICAL MATERIEL CORPORATION claims proprietary right in the material disclosed hereon. This drawing is issued in confidence for engineering information only and may not be reproduced or used to manufacture anything shown hereon without permission from **THE TECHNICAL MATERIEL CORPORATION** to the user. This drawing is loaned for mutual assistance and is subject to recall at any time.

UNLESS OTHERWISE SPECIFIED DIMENSIONS ARE IN INCHES AND INCLUDE CHEMICALLY APPLIED OR PLATED FINISHES

| | |
|-------------|--------------|
| DECIMALS | FRACTIONS |
| .X ± .05 | 1/64 |
| .XX ± .01 | TOLS. ANGLES |
| .XXX ± .005 | 0° .30' |

MATERIAL *AS NOTED*

FINISH *AS NOTED*

5

4

3

2

1

5

4

3

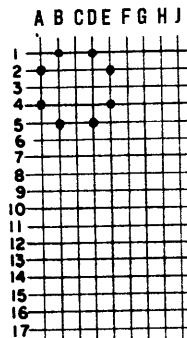
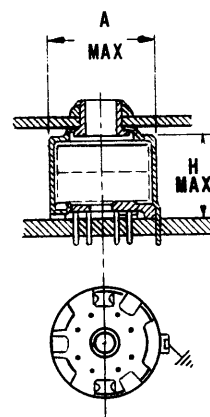
2

1

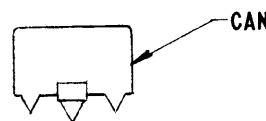
HARDWARE GRID SPACING (0.1" CENTERS) SEE CHART

| TMC P/N | MFR P/N | COIL PINS | GRID LOCATION | NO GRD PINS | GRD PIN LOCATION | A (in) | H (in) |
|---------|---------|-----------|---|-------------|------------------|--------|--------|
| CUI68-1 | 1107HD | 4 | A1, A5, E1, E5 | 1 | C5 | 0.492 | 0.342 |
| -2 | 1408HD | 6 | B2, C1, C3, E1, E3, F2 | 1 | A1 | 0.614 | 0.532 |
| -3 | 1811HD | 8 | A2, A4, B1, B5, D1, D5, E2, E4 | 1 | C7 | 0.776 | 0.654 |
| -4 | 2213HD | 8 | A2, A4, B1, B5, D1, D5, E2, E4 | 1 | C8 | 0.914 | 0.768 |
| -5 | 2616HD | 8 | A5, A7, B3, B9, F3, F9, G5, G7 | 2 | A11, G1 | 1.100 | 0.871 |
| -6 | 3019HD | 9 | A6, A8, B4, B10, D11, F4, F10, G5, G8 | 2 | A13, G1 | 1.28 | 1.00 |
| -7 | 3622HD | 10 | A7, A9, B5, B11, D4, D12, F5, F11, G7, G9 | 2 | A15, G1 | 1.49 | 1.18 |
| -8 | 4229HD | 10 | B8, B10, C6, C12, E5, E13, G6, G12, H8, H10 | 2 | A17, J1 | 1.77 | 1.44 |

NOTE: PART NUMBER INCLUDES ALL NECESSARY COMPONENT PARTS TO COMPLETE ASSEMBLY
 ALL ASSEMBLIES EXCEPT 1107HD AND 1408HD ARE PROVIDED WITH REMOVABLE BUSHING & NUT
 TYPICAL PRINTED CIRCUIT BOARD THICKNESS 0.094"
 TYPICAL PANEL THICKNESS 0.050", PANEL HOLE REQUIRED 11/32".



TYPICAL EXAMPLE: 1811HD



REVISIONS

| ZONE | LTR | DESCRIPTION | DATE | E.M.N.NO | DRAFT | CHKD | APPD |
|------|-----|---------------------------|----------|----------|-------|------|------|
| | X | EXP. RELEASE | 11/13/68 | | K.H. | | JWB |
| | Ø | ORIG. RELEASE FOR PROD | 12/23-68 | | RG | | JWB |
| | A | TMC MFG CODE WAS S401-307 | 1/16/69 | | JH | JH | JWB |

| REQ'D | ITEM | PART NUMBER | DESCRIPTION | SYM. |
|---|------|-------------|--|------|
| | | | LIST OF MATERIAL | |
| O. POSE | | | | |
| UNLESS OTHERWISE SPECIFIED DIMENSIONS ARE IN INCHES AND INCLUDE CHEMICALLY APPLIED OR PLATED FINISHES | | | THE TECHNICAL MATERIEL CORP. MAMARONECK, NEW YORK | |
| DECIMALS .X ± .05 .XX ± .01 .XXX ± .005 | | | ELECT. DES. DATE 12-2-68 | |
| FRACTIONS 1/64 ANGLES 0°-30' | | | CHECKED DATE 11/26/68 | |
| MATERIAL | | | DRAWN DATE 11/13/68 | |
| FINISH | | | SIZE B | |
| NOTICE TO PERSONS RECEIVING THIS DRAWING THE TECHNICAL MATERIEL CORPORATION claims proprietary right in the material disclosed hereon. This drawing is issued in confidence for engineering information only and may not be reproduced or used to manufacture anything shown hereon without permission from THE TECHNICAL MATERIEL CORPORATION to the user. This drawing is loaned for mutual assistance and is subject to recall at any time. | | | CODE IDENT. NO. 82679 | |
| | | | DWG NO. CU 168 | |
| | | | ISSUE A | |
| | | | SCALE | |
| | | | SHEET OF | |

| | | |
|-------------|---------------|-----------|
| QTY / UNIT | MODEL USED ON | ASS'Y NO. |
| | HFSR - 4 | |
| APPLICATION | | |
| CODE | S401 - 118 | |

D

C

B

A

3

2

1