

STANDARD DRAWING

CU-100

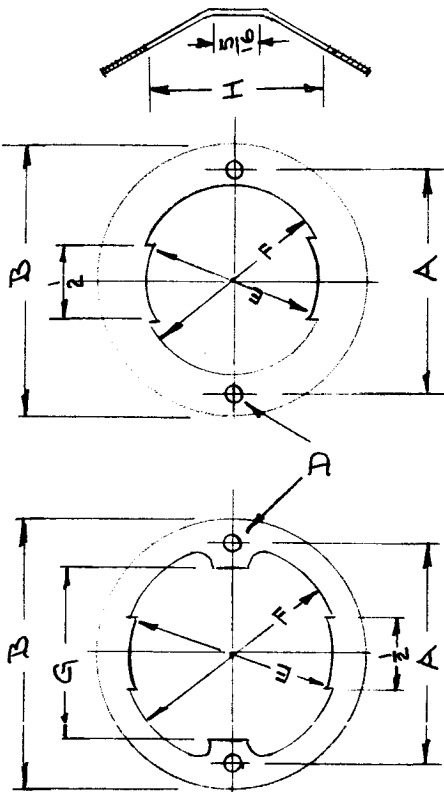
A

IF IT IS FOUND DESIRABLE TO CHANGE ANY TOLERANCE OR OTHER DETAIL SPECIFIED ON THIS DRAWING NOTIFY THE PURCHASER PROMPTLY.

MAXIMUM ALLOWABLE TOLERANCES HAVE BEEN DETERMINED AND DEVIATIONS WILL BE CAUSE FOR REJECTION. REMOVE ALL BURRS AND SHARP EDGES

USED ON

TMC PART NO	CINCH NO	TYPE	MODEL			PROJECT NO.				DATE	
			TUBE BASED	A	B	C	D	E	F		G
CU-100-1	8476	2	1.165	1.312	1 1/8	1/2	.136	1.187	1 7/32	1	1 1/32
CU-100-2	13382	2	1.275	1.312	1 3/16	1/2	.144	1.300	1 2/16	1	1 5/32
CU-100-3	8599	2	1.275	1.500	1 3/16	1/2	.136	1.300	1 2/16	1 3/4	1 5/32
CU-100-4	12111	2	1.375	1.312	1 3/16	1/2	.143	1.406	1 7/16	1	1 9/32
CU-100-5	8517	2	1.375	1.500	1 3/16	1/2	.143	1.406	1 7/16	1 5/32	1 9/32
CU-100-6	8548	3	1.165	1.500	1 3/16	1/2	.136	1.187	1 7/32		1 1/32



TYPE - 2

TYPE - 3

REF: CINCH MFG. CORP.

REQ. ITEM	PART NO.	DESCRIPTION	SYMBOL
	.015	THE TECHNICAL MATERIEL CORP. MAMARONECK. NEW YORK	
		SPRING STEEL	
		MATERIAL	
		ANNEALED	
		TYPE & TEMPER	
		HEAT TREAT. SPEC.	
		FINISH & SPEC. NO.	
		CAD. PLATE-S-105	
		FINISH & SPEC. NO.	

ISSUE ITEM	CHANGED FROM	DATE	CN. NO.	DRAFTS CHECKER	ENG. APP.
A 1	TYPE-3 ADDED	8-18-53	1	JANA	E.P.D. PPT
TOLERANCES					
SCALE					
DEC. DIM. ± FRAC. DIM. ± ANGULAR DIM. ±					
DRILL, PUNCH, COMMERCIAL STOCK SIZES AND MANUFACTURERS TOLERANCES ARE NOT INCLUDED.					

DRAWN	ELEC. DES. APP.	MECH. DES. APP.
JANA	AMP	AMP
CHECKED	FINAL APPROVAL	
E.P.D.	AMP	
		CU-100
		A

TMC NO.	THOMAS & BETTS	BURNDY NO.	FERRULE	COLOR	I. D.	O. D.	COAXIAL CABLE
CU-101-1		Y1C124	Inner	Green	.124	.147	RG-58/U
CU-101-2		Y0C128	Outer	Tin	.199	.239	RG-58A/U
CU-101-3		Y1C156	Inner	Red	.156	.193	RG-59/U
CU-101-4		Y0C160	Outer	Yellow	.261	.301	RG-62/U
CU-101-5		Y1C150	Inner	Blue	.150	.183	
CU-101-6		Y0C150	Outer	Orange	.235	.270	
CU-101-7		Y1C297	Inner	Blue	.297	.339	RG-8/U RG-9/U RG-11/U RG-13/U RG-22/U RG-63/U
CU-101-8		Y0C250	Outer	Red	.405	.457	
CU-101-9		Y1C071	Inner	Green	.071	.098	RG-188/U RG-187/U
CU-101-10		Y0C110	Outer	Blue	.180	.208	
CU-101-11	GSB058			NATURAL	.058	.083	

REQ. ITEM	PART NO.	DESCRIPTION	SYMBOL
		THE TECHNICAL MATERIEL CORP. MAMARONECK. NEW YORK	
	STOCK SIZE		
	MATERIAL	FERRULE, COAXIAL CABLES	
	TYPE & TEMPER.	ASSE	
	HEAT TREAT. SPEC.		
	FINISH & SPEC. NO.		
	ELEC. DES. APP.		
	MECH. DES. APP.		
	CHECKED		
	DRAWN		
	FINAL APPROVAL		
			CU-101 D

TOLERANCES
 DEC. DIM. ±
 FRAC. DIM. ±
 ANGULAR DIM. ±

SCALE:
 MAXIMUM ALLOWABLE TOLERANCES HAVE BEEN DETERMINED AND ANY DEVIATIONS WILL BE CAUSE FOR REJECTION.
 REMOVE ALL BURRS AND SHARP EDGES

STANDARD DRAWING

CU-1

IF IT IS FOUND DESIRABLE TO CHANGE ANY TOLERANCE OR OTHER DETAIL SPECIFIED ON THIS DRAWING NOTIFY THE PURCHASER PROMPTLY.

MAXIMUM ALLOWABLE TOLERANCES HAVE BEEN DETERMINED AND DEVIATIONS WILL BE CAUSE FOR REJECTION. REMOVE ALL BURRS AND SHARP EDGES

USED ON
MODEL PROJECT NO. ASBY. NO.

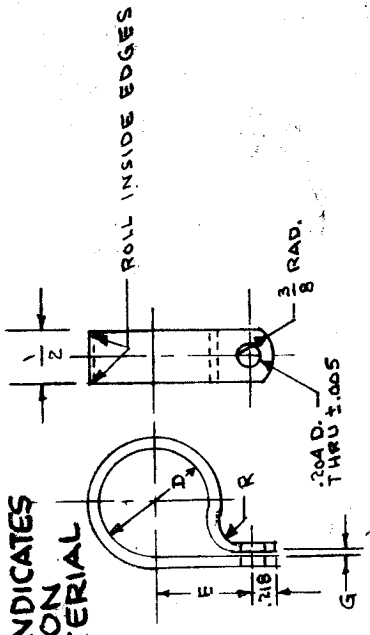
TMC NO.	CAT. NO.	D	E	R	NYLON
CU-102-1	2	.125	0.328	1/32	*
CU-102-2	3	.188	0.390	1/32	*
CU-102-3	4	.250	0.421	1/32	*
CU-102-4	5	.313	0.453	1/32	*
CU-102-5	6	.375	0.483	1/32	*
CU-102-6	7	.438	0.531	1/32	*
CU-102-7	8	.500	0.562	1/32	*
CU-102-8	9	.563	0.625	1/16	*
CU-102-9	9 1/4	.593	0.618	1/16	*
CU-102-10	10	.625	0.610	1/16	*
CU-102-11	11	.688	0.666	1/16	*
CU-102-12	12	.750	0.765	1/16	*
CU-102-13	14	.875	0.812	1/16	*
CU-102-14	16	1.000	0.906	1/16	*
CU-102-15	18	1.125	0.968	1/16	*
CU-102-16	19	1.188	1.025	1/16	*
CU-102-17	20	1.250	1.156	1/16	*
CU-102-18	24	1.5	1.062	1/16	*
CU-102-19	32	2.0	1.312	1/16	*
CU-102-20	40	2.5	1.562	1/16	*
CU-102-21	48	3.0	1.812	1/16	*

5/8 WIDE

CU 102 - 3N

'N' INDICATES NYLON MATERIAL

TMC NO.



DIMENSIONS FOR REF. ONLY
MATERIAL - ETHYL CELULOSE EXCEPT AS NOTED
* AVAILABLE IN WHITE NYLON

S401-294
S401-292
S401-293

REQ. ITEM	PART NO.	DESCRIPTION	SYMBOL
	.062 THK.	THE TECHNICAL MATERIEL CORP. MAMARONECK, NEW YORK	
SEE NOTE	STOCK SIZE	CLAMP, "G" TYPE	
MATERIAL	WEIGHT PER PC.		
TYPE & TEMPER			
HEAT TREAT. SPEC.			
PURCH. ORDER NO.			
ISSUE ITEM	CHANGED FROM	DATE	CN. NO.
A	101. ADDED MFG. NO. APPROX. 6-16-11472	5RG	5RG
SCALE	TOLERANCES		
	DEC. DIM. ± .005 FRAC. DIM. ± 1/64 ANGULAR DIM. ±		
	DRILL, PUNCH, COMMERCIAL STOCK SIZES AND MANUFACTURERS TOLERANCES ARE NOT INCLUDED.		
DRAWN	DATE	ELEC. DES. APP.	FINAL APPROV.
WSE wly	11/19/57	AMP	AMP
CHECKED			
			CU-102

IF IT IS FOUND DESIRABLE TO CHANGE ANY TOLERANCE OR OTHER DETAIL SPECIFIED ON THIS DRAWING NOTIFY THE PURCHASER PROMPTLY.

MAXIMUM ALLOWABLE TOLERANCES HAVE BEEN DETERMINED AND DEVIATIONS WILL BE CAUSE FOR REJECTION. REMOVE ALL BURRS AND SHARP EDGES

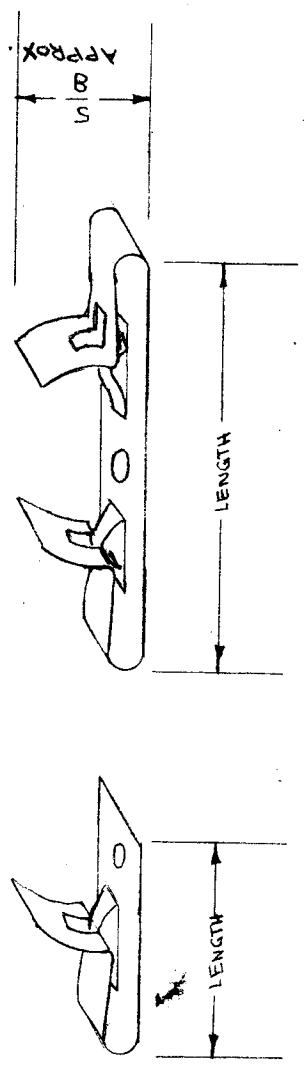
STANDARD DRAWING

CU-103

USED ON

MODEL PROJECT NO. ASS'Y. NO. DATE.

TMC NO.	CAT. NO.	TYPE	LENGTH
CU-103-1	533	SINGLE	3/4
CU-103-2	534	SINGLE	1
CU-103-3	535	DOUBLE	1 1/2
CU-103-4	536	DOUBLE	2 1/6



DIMENSIONS FOR REF. ONLY
MTG. HOLE FOR #4 SCREW

REF: H.H. SMITH CO.

REQ. ITEM	PART NO.	DESCRIPTION	SYMBOL
		THE TECHNICAL MATERIEL CORP. MAMARONECK, NEW YORK	
STOCK SIZE			
BRASS		CLIP, SPRING	
MATERIAL			
TYPE & TEMPER			
HEAT TREAT. SPEC.			
FINISH & SPEC. NO.			

ISSUE ITEM	CHANGED FROM	DATE	CN. NO.	DRAFTS	CHECKER	ENG. APP.

DEC. DIM. ±	DRILL, PUNCH, COMMERCIAL STOCK
FRAC. DIM. ±	SIZES AND MANUFACTURERS
ANGULAR DIM. ±	TOLERANCES ARE NOT INCLUDED.

C.D.D. 11/18/52	AMP	MECH. DES. APP.
WDC 11/18/52	AMP	
		FINAL APPROVAL

CU-103

STANDARD DRAWING

IF IT IS FOUND DESIRABLE TO CHANGE ANY TOLERANCE OR OTHER DETAIL SPECIFIED ON THIS DRAWING NOTIFY THE PURCHASER PROMPTLY.

MAXIMUM ALLOWABLE TOLERANCES HAVE BEEN DETERMINED AND DEVIATIONS WILL BE CAUSE FOR REJECTION. REMOVE ALL BURRS AND SHARP EDGES

USED ON

DATE

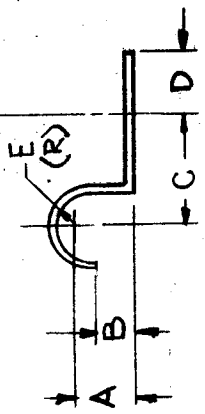
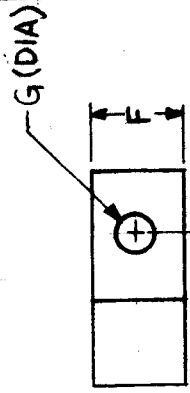
ASSY. NO.

PROJECT NO.

MODEL

CU-104-1 B

TMC PART NO.	MFRS. REF.	MFRS. PART NO.	A	B	C	D	E (R)	F	G (DIA)
CU-104-1	A	1036	1/16	1/16	3/8	1/4	5/32	1/2	.169
CU-104-2	A	1045	1/16	1/16	3/8	1/4	5/32	1/2	.196
CU-104-3	A	1065	3/32	3/64	1/4	5/32	1/16	11/32	.149
CU-104-4	A	1066	1/8	3/64	9/32	5/32	3/32	11/32	.149
CU-104-5	B	471-6	3/32	1/8	3/8	3/16	9/64	3/8	.144 .149
CU-104-6	A	1069	9/32	3/32	17/32	1/4	7/32	13/32	.180
CU-104-7	A	8521	1/16	1/16	3/8	1/4	5/32	1/2	.144



DIMENSIONS FOR REFERENCE ONLY

MFRS. REF. A - CINCH MFR. CORP.
B - ZIERICK MFR. CORP.

REQ. ITEM	DESCRIPTION	SYMBOL
.032 THICK		
STOCK SIZE		
STEEL		
MATERIAL	WEIGHT PER PC.	
COLD ROLLED		
TYPE & TEMPER		
4		
HEAT TREAT. SPEC.		
S-105 (CAD. PLATE)		
FINISH & SPEC. N		

THE TECHNICAL MATERIEL CORP.
MAMARONECK, NEW YORK

CLAMP, CABLE

C.O.D. 12-4-52
G.T.O

ELEC. DES. APP.
MECH. DES. APP.

G.T.O

CHECKED

FINAL APPROVAL

CU-104 B

ISSUE ITEM	CHANGED FROM	DATE	CN. NO.	DRAFTS	CHECKER	ENG. APP.
5	CU-104-5 DIMS. CLARIFIED	1-25-	80			
4	MFR NO WAS CATALOG NO					
3	TOL. ADDED TO CHART					
2	MFRS REFADED TO CHART					
1	FINISH WAS NICKEL PLATE					
A	N.I. PLATE WAS CAD (SPEC CHART)	9/14/61	5560	JA	OB	JW

TOLERANCES

DEC. DIM. ±
FRAC. DIM. ± 1/64
OTHERS ANGULAR DIM. ±

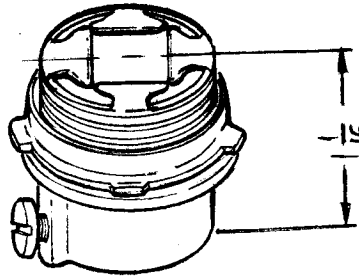
SCALE 1:1
DRILL, PUNCH, COMMERCIAL STOCK SIZES AND MANUFACTURERS TOLERANCES ARE NOT INCLUDED.

IF IT IS FOUND DESIRABLE TO CHANGE ANY TOLERANCE OR OTHER DETAIL SPECIFIED ON THIS DRAWING NOTIFY THE PURCHASER PROMPTLY.

MAXIMUM ALLOWABLE TOLERANCES HAVE BEEN DETERMINED AND DEVIATIONS WILL BE CAUSE FOR REJECTION. REMOVE ALL BURRS AND SHARP EDGES

WILL HOLD
1A/2, 1A/3, 1A/4, 1A/2, 10/2, 10/3
1A/2, 1A/3, 1A/4, 1A/2, 1A/3, 10/2
3/8" FLEX. CONDUIT

BX
BX LEADED



(FOR REF ONLY)

REF: THOMAS & BETTS CO. #240
REF: GENERAL ELEC. CO. CAT. # SP-7105

ISSUE ITEM	CHANGED FROM	DATE	CN. NO.	DRAFTS	CHECKER	ENG. APP.
A 1	ADDED THOMAS & BETTS CO. #240 TO REF. CHART	5-31-62	6755	V.R.R.	Y.S.	W.S.
TOLERANCES						
SCALE						
DRILL, PUNCH, COMMERCIAL STOCK SIZES AND MANUFACTURERS TOLERANCES ARE NOT INCLUDED.						

ALL OTHERS	DEC. DIM. ± FRAC. DIM. ± ANGULAR DIM. ±
------------	---

CU-105 A

USED ON	
MODEL	PROJECT NO.
ASSY. NO.	DATE

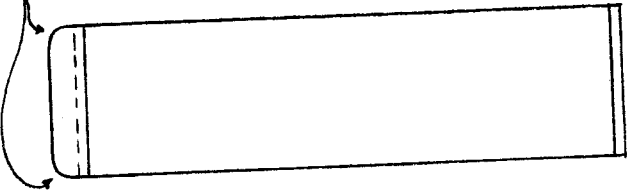
REQ. ITEM	PART NO.	DESCRIPTION	SYMBOL
		THE TECHNICAL MATERIEL CORP. MAMARONECK, NEW YORK	
STOCK SIZE		FITTING	
MATERIAL	WEIGHT PER PC.	ARMORED CABLE	
TYPE & TEMPER	DRAWN		
		0.000 7/6/53	
HEAT TREAT. SPEC.	CHECKED		
FINISH & SPEC. NO.			CU-105 A

CU-106 D

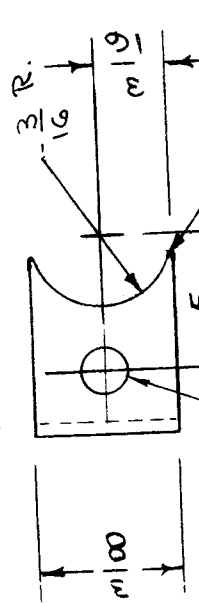
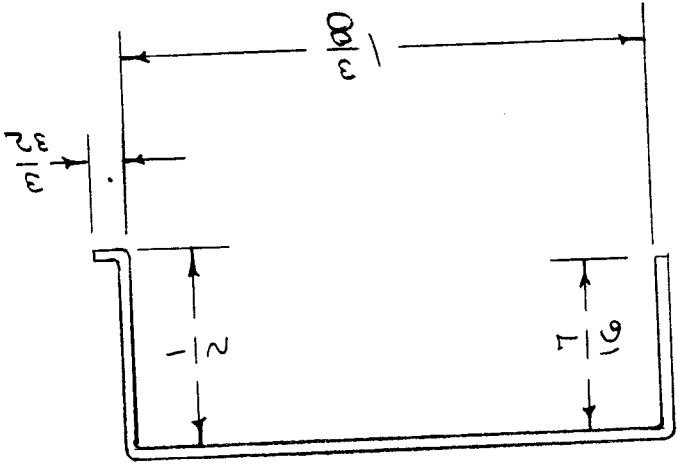
USED ON

REQ. PER UNIT	MODEL	PROJECT NO.	ASSY. NO.	DATE
1	YOX		A-585	1-26-55
1	YOX			1-26-55
1	PHO		A-585	1-26-55
1	RTE			2-3-56

ROUND OFF 1/16



$\frac{1}{16}$ INSIDE RADIUS BENDS



REMOVE SHARP EDGES

3-28-67	18041	L.A.K.	HO
ADD 1/32 R. CHSD 5/16 TO 1/32	17282	RME	ADD
9/64 ADDED	2	RS	ADD
REDRAWN - NO CHANGE	1/24 KS	+	ADD
CHANGED FROM	DATE	CN. NO.	DRAFTS CHECKER/ENG. APP.

TOLERANCES

DEC. DIM. ±
FRAC. DIM. ±
ANGULAR DIM. ±

DRILL, PUNCH, COMMERCIAL STOCK SIZES AND MANUFACTURERS TOLERANCES ARE NOT INCLUDED.

REQ. ITEM	PART NO.	DESCRIPTION	SYMBOL
	.025 THK.	THE TECHNICAL MATERIEL CORP.	
		MAMARONECK. NEW YORK	
		XTAL CLAMP	
BERY LIUM COPPER	STOCK SIZE		
MATERIAL	WEIGHT PER PC.		
	TYPE & TEMPER		
	HEAT TREAT. SPEC.		
	FINISH & SPEC. NO.		

CDP 1-26-55
DRAWN
CHECKED
FINAL APPROVAL

CU-106 D

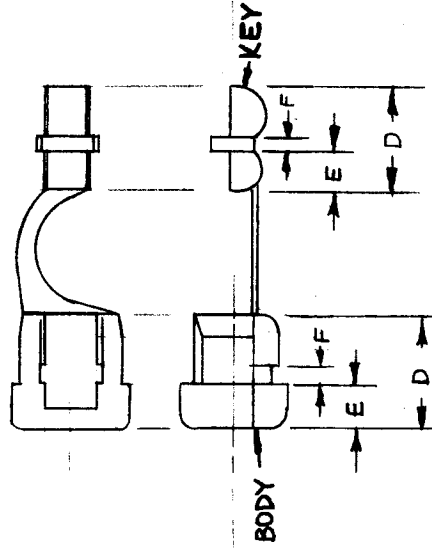
STANDARD DRAWING

IF IT IS FOUND DESIRABLE TO CHANGE ANY TOLERANCE OR OTHER DETAIL SPECIFIED ON THIS DRAWING NOTIFY THE PURCHASER PROMPTLY.

MAXIMUM ALLOWABLE TOLERANCES HAVE BEEN DETERMINED AND DEVIATIONS WILL BE CAUSE FOR REJECTION. REMOVE ALL BURRS AND SHARP EDGES

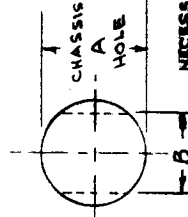
T.M.C. NO.	CAT. NO.	WIRE TYPE	WIRE DIA.	A	B	C	D	E	F
CU-107-1	SR-3P1	POSS AND POT-64	.12 X .22	.437	.395	.468	.406	.155	.064
CU-107-2	SR-6P1	SJ-18/2	.300	.625	.570	.725	.687	.280	.127

F DIMENSION INDICATES MAX. CHASSIS THICKNESS



FOR CU-107-2

FOR CU-107-1



NECESSARY FOR TORQUE PREVENTION ONLY



FOR CU-107-2



FOR CU-107-1

REF. HEYMAN MFG. CO.

REQ. ITEM		PART NO.		DESCRIPTION		SYMBOL	
#		#		THE TECHNICAL MATERIEL CORP.			
STOCK SIZE				MAMARONECK, NEW YORK			
MATERIAL		WEIGHT PER PC.		BUSHING, STRAIN RELIEF			
#		#		C.D.D. 3-10-53		G.T.O	
TYPE & TEMPER				DRAWN		ELEC. DES. APP. <i>[Signature]</i>	
#				CHECKED		G.T.O	
HEAT TREAT. SPEC.				FINAL APPROVAL			
#				FINISH & SPEC. NO.		CU-107	
				B			

B 1	REVISED & REDRAWN	8-10-61	5415	WR	RU 16
2	DRILLING CHANGED				
3	ON CU-107-2 CAT NO. WAS SR-3P				
A 1	ON CU-107-1 CAT NO. WAS SR-3P	2-16-61	4200	RU	RU 16

ISSUE ITEM	CHANGED FROM	DATE	CN. NO.	DRAFTS	CHECKER	ENG. APP.

TOLERANCES		SCALE
DEC. DIM. ±		
FRAC. DIM. ±		
ANGULAR DIM. ±		

DRILL, PUNCH, COMMERCIAL STOCK SIZES AND MANUFACTURERS TOLERANCES ARE NOT INCLUDED.

IF IT IS FOUND DESIRABLE TO CHANGE ANY TOLERANCE OR OTHER DETAIL SPECIFIED ON THIS DRAWING NOTIFY THE PURCHASER PROMPTLY.

MAXIMUM ALLOWABLE TOLERANCES HAVE BEEN DETERMINED AND DEVIATIONS WILL BE CAUSE FOR REJECTION. REMOVE ALL BURRS AND SHARP EDGES

WILL HOLD

1/4", 1/4/3, 1/4/2, 1/2/3, 1/2/2, 10/2 BX
 1/4/2, 1/4/3, 1/2/2, 1/2/3 BX LEADED
 5/16", 3/8" FLEX. CONDUIT

CU-110 A

USED ON

DATE

ASS'Y. NO.

PROJECT NO.

MODEL

REF: T & B #266

ISSUE ITEM	CHANGED FROM	DATE	CN. NO.	DRAFTS CHECKER	ENG. APP.
A	REF. WAS GE SP-532	7/27/59	-	JDB	1/6
TOLERANCES					
DEC. DIM. ±			DRILL, PUNCH, COMMERCIAL STOCK		
FRAC. DIM. ±			SIZES AND MANUFACTURERS		
ANGULAR DIM. ±			TOLERANCES ARE NOT INCLUDED.		

REQ. ITEM	PART NO.	DESCRIPTION	SYMBOL
		THE TECHNICAL MATERIEL CORP. MAMARONECK. NEW YORK	
		FITTING	
		CONDUIT (90°)	
		F.M. 7/6/53	
		DRAWN	ELEC. DES. APP.
		CHECKED	MECH. DES. APP.
			FINAL APPROVAL
			CU-110 A

CU-III

USED ON

DATE

ASS'Y. NO.

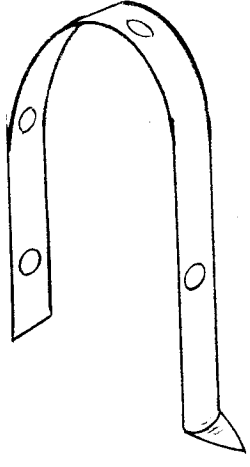
PROJECT NO.

MODEL

IF IT IS FOUND DESIRABLE TO CHANGE ANY TOLERANCE OR OTHER DETAIL SPECIFIED ON THIS DRAWING NOTIFY THE PURCHASER PROMPTLY.

MAXIMUM ALLOWABLE TOLERANCES HAVE BEEN DETERMINED AND DEVIATIONS WILL BE CAUSE FOR REJECTION. REMOVE ALL BURRS AND SHARP EDGES

WILL HOLD
14/3 > 12/2 BX
14/3 > 14/2 BXL



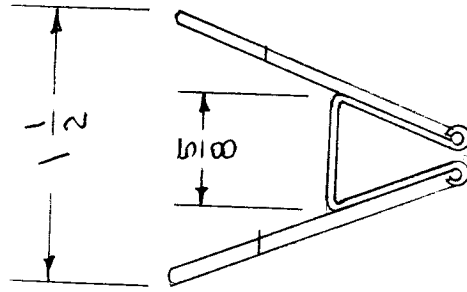
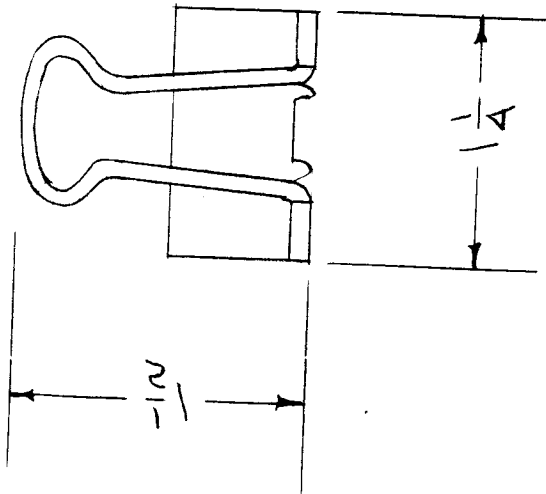
REF: GENERAL ELECTRIC # SP-6030

REQ. ITEM	PART NO.	DESCRIPTION	SYMBOL
		THE TECHNICAL MATERIEL CORP. MAMARONECK. NEW YORK	
		CLAMP	
		CONDUIT	
		F.M. 7/6/53	
		DRAWN	ELEC. DES. APP.
		CHECKED	MECH. DES. APP.
			FINAL APPROVAL
			CU-III

ISSUE ITEM	CHANGED FROM	DATE	CN. NO.	DRAFTS	CHECKER	ENG. APP.
TOLERANCES						
SCALE						
DRILL, PUNCH, COMMERCIAL STOCK SIZES AND MANUFACTURERS TOLERANCES ARE NOT INCLUDED.						
ALL	DEC. DIM. ±					
OTHERS	FRAC. DIM. ±					
	ANGULAR DIM. ±					

IF IT IS FOUND DESIRABLE TO CHANGE ANY TOLERANCE OR OTHER DETAIL SPECIFIED ON THIS DRAWING NOTIFY THE PURCHASER PROMPTLY.

MAXIMUM ALLOWABLE TOLERANCES HAVE BEEN DETERMINED AND DEVIATIONS WILL BE CAUSE FOR REJECTION. REMOVE ALL BURRS AND SHARP EDGES



DIMENSIONS FOR REF. ONLY

REF: PARROT BINDER CLIP NO. 15

CU-114

REQ PER UNIT 1	MODEL	PROJECT NO.	ASS'Y. NO.	DATE
	CTAC	311	A-1199	6-21-54

USED ON

ISSUE ITEM	CHANGED FROM	DATE	CN. NO.	DRAFTS	CHECKER	ENG. APP.
TOLERANCES						
ALL DEC. DIM. ±	SCALE					
OTHERS FRAC. DIM. ±	DRILL, PUNCH, COMMERCIAL STOCK					
ANGULAR DIM. ±	SIZES AND MANUFACTURERS					
TOLERANCES ARE NOT INCLUDED.						

REQ. ITEM	PART NO.	DESCRIPTION	SYMBOL
		THE TECHNICAL MATERIEL CORP. MAMARONECK. NEW YORK	
		CLIP, BINDER	
		WEIGHT PER PC.	
		TYPE & TEMPER	
		HEAT TREAT. SPEC.	
		FINISH & SPEC. NO.	
		C.D.D. 6-21-54	
		DRAWN	
		ELEC. DES. APP.	
		CHECKED	
		MECH. DES. APP.	
		FINAL APPROVAL	
		CU-114	

IRABLE TO CHANGE ANY TOLERANCE SPECIFIED ON THIS DRAWING NOTIFY PROMPTLY.

ABLE TOLERANCES HAVE BEEN DETERMINATIONS WILL BE CAUSE FOR REJECTION. HAVE ALL BURRS AND SHARP EDGES

CU-115

USED ON

PROJECT NO.

ASSY. NO.

DATE

REQ. PER UNIT

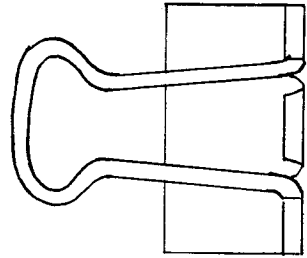
311

A-799

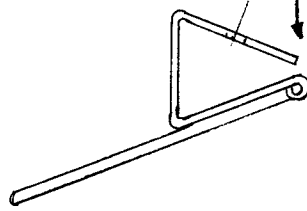
6-21-54

MODEL

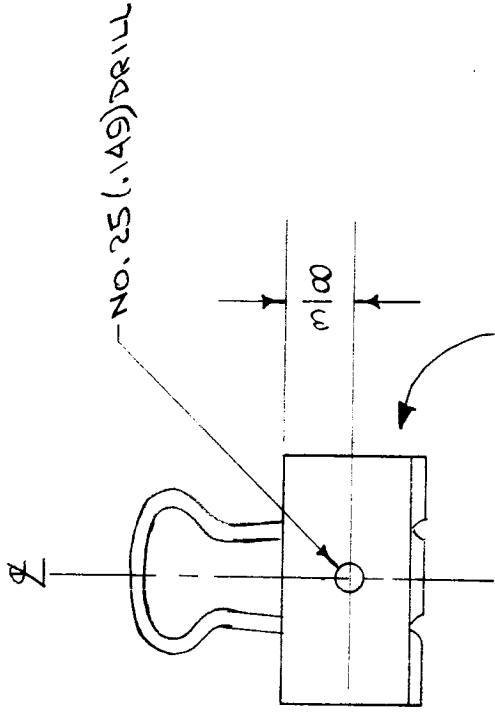
CTAC



USE - CU-114



REMOVE 1 HANDLE & CUT AWAY METAL ROLL AS SHOWN



DRILL AS SHOWN

REF: CU-114

REQ. ITEM	PART NO.	DESCRIPTION	SYMBOL
		THE TECHNICAL MATERIEL CORP. MAMARONECK, NEW YORK	
		BINDER CLIP	
		MODIFIED	
		C.D.D. 6-21-54	WRE
		DRAWN	MECH. DES. APP.
		APB	
		APB	
		CHECKED	FINAL APPROVAL
			CU-115

REQ. ITEM	PART NO.	STOCK SIZE	MATERIAL	WEIGHT PER PC.	TYPE & TEMPER	HEAT TREAT. SPEC.	FINISH & SPEC. NO.

ISSUE ITEM	CHANGED FROM	DATE	CN. NO.	DRAFTS	CHECKER	ENG. APP.

TOLERANCES	
DEC. DIM. ±	1/32
FRAC. DIM. ±	1/32
ANGULAR DIM. ±	1/2

DRILL, PUNCH, COMMERCIAL STOCK SIZES AND MANUFACTURERS TOLERANCES ARE NOT INCLUDED.

STANDARD DRAWING

TMC PART NO.	FIGURE	MFG. PART NO.	USED ON	CU 117 D
CU 117	1	HC-83314-GTMC-SS	ASSY. NO.	
CU 117-2	2	HC-83314-LK-GTMC-SS	DATE	2-3-58
			MODEL	
			FORM	
			DATE	

NOTE: FIG. 1 NOT SHOWN.
SAME AS FIG. 2 EXCEPT
W/O/T PADLOCK EYE

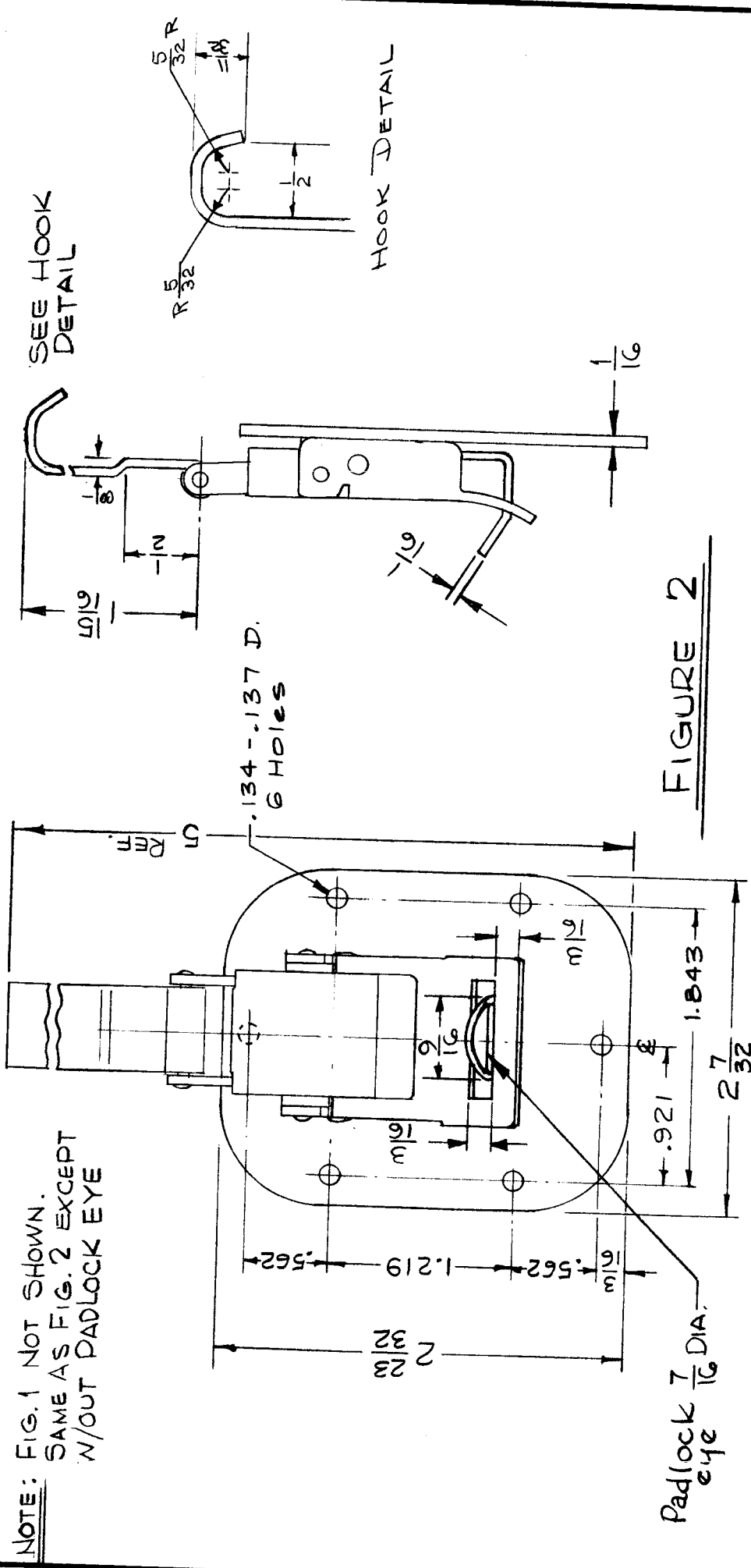


FIGURE 2

REQ. ITEM	PART NO.	DESCRIPTION	SYMBOL
1		THE TECHNICAL MATERIEL CORP. MAMARONECK. NEW YORK	
2		CLAMP, COVER	
REQ. PER UNIT	STOCK SIZE	MATERIAL	
3		STAINLESS STEEL	
4		FINISH & SPEC. NO.	
5		TYPE & TEMPER	
6		HEAT TREAT. SPEC.	
7		CHECKED	
8		RE DRAWN	
9		DATE	
10		CHECKER	
11		ENG. APP.	
12		SCALE:	
13		MAXIMUM ALLOWABLE TOLERANCES HAVE BEEN DETERMINED AND ANY DEVIATIONS WILL BE CAUSE FOR REJECTION. REMOVE ALL BURRS AND SHARP EDGES	
14		TOLERANCES	
15		DEC. DIM. ±	
16		FRAC. DIM. ±	
17		ANGULAR DIM. ±	
18		FINAL APPROVAL	
19		CU 117 D	

Ref. NIELSEN H'DWARE CORP. (No. SC-B-83314-6 Modified)

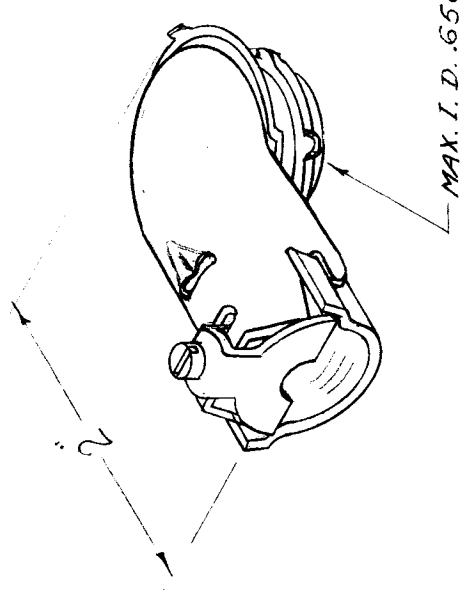
CU-119 A

USED ON			
REQ. PER UNIT	MODEL	PROJECT NO.	ASSY. NO.
1	DDR		A-458
1	LFS		A-458

REQ. PER UNIT	MODEL	PROJECT NO.	ASSY. NO.	DATE
1	DDR		A-458	4-21-55
1	LFS		A-458	4-21-55

IF IT IS FOUND DESIRABLE TO CHANGE ANY TOLERANCE OR OTHER DETAIL SPECIFIED ON THIS DRAWING NOTIFY THE PURCHASER PROMPTLY.

MAXIMUM ALLOWABLE TOLERANCES HAVE BEEN DETERMINED AND DEVIATIONS WILL BE CAUSE FOR REJECTION. REMOVE ALL BURRS AND SHARP EDGES



DIMENSIONS FOR REF. ONLY.

REF: THOMAS & BETTS CO. # 321
 REF: GENERAL ELECTRIC SUPPLY CORP. CAT. SP5321

REQ. ITEM	PART NO.	DESCRIPTION	SYMBOL
		THE TECHNICAL MATERIEL CORP. MAMARONECK. NEW YORK	
		90° ANGLE "TITE BITE" CONN.	
		USED WITH ROMAX "14-2	
		PB 4-21-55	WDC
		DRAWN	WDC
		CHECKED	WDC
		ELEC. DES. APP.	WDC
		MECH. DES. APP.	WDC
		HEAT TREAT. SPEC.	
		FINISH & SPEC. NO.	CU-119 A

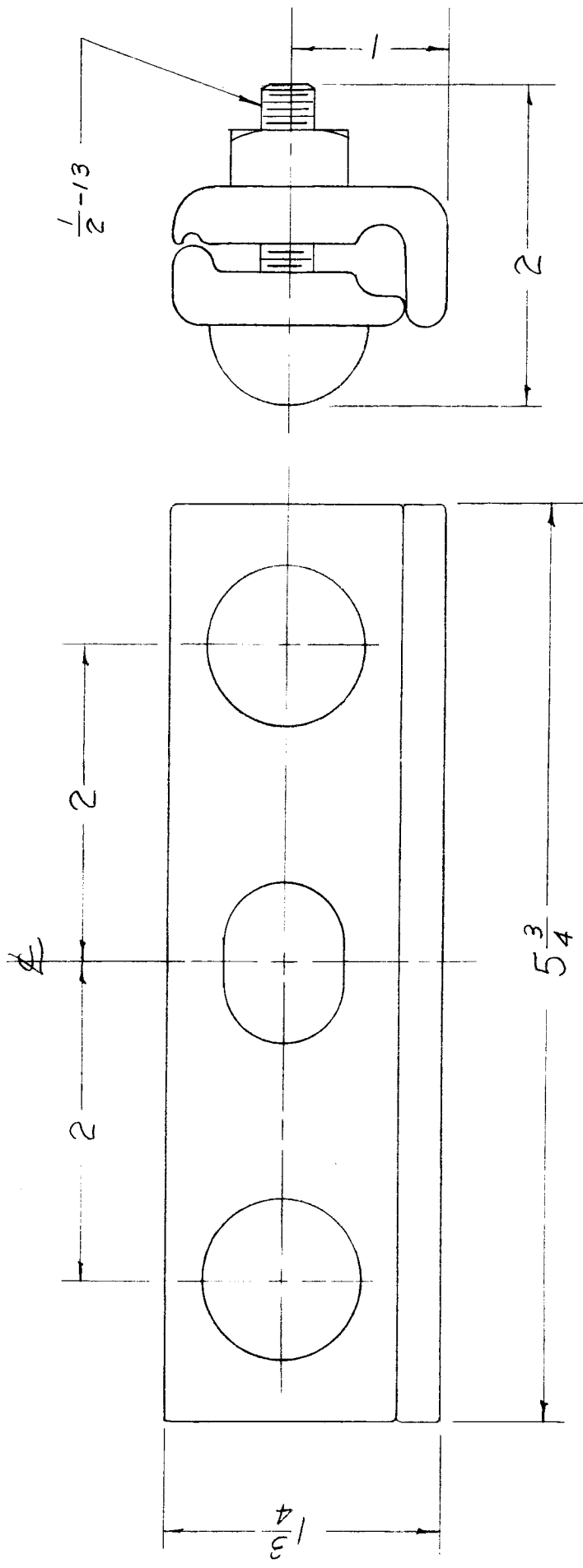
ISSUE ITEM	CHANGED FROM	DATE	CN. NO.	DRAFTS CHECKER	ENG. APP.
A 1	ADDED THOMAS & BETTS CO. #321 TO REF CHART	5-31-62	6755	V.R.R.	Y.W.P. BR

SCALE

DRILL, PUNCH, COMMERCIAL STOCK
 SIZES AND MANUFACTURERS
 TOLERANCES ARE NOT INCLUDED.

DEC. DIM. ±
 ALL FRAC. DIM. ±
 OTHERS ANGULAR DIM. ±

REQ. PER UNIT	MODEL	USED ON
		ASSY. NO.
		DATE
		CU-124



TWO (2) BOLTS & TWO (2) NUTS
 SUPPLIED BY THE MANUFACTURER.

DIMENSIONS FOR REF. ONLY.

REF: HUBBARD # 8903

REQ. ITEM	PART NO.	DESCRIPTION	SYMBOL
		THE TECHNICAL MATERIEL CORP. MAMARONECK, NEW YORK	
		SUSPENSION CLAMP, CABLE	
MATERIAL			
TYPE & TEMPER		13-1-19-56 688, 701, 16	WDC
HEAT TREAT. SPEC.			FINAL APPROVAL
FINISH & SPEC. NO.			CU-124
DRAWN		WDC	
CHECKED			
ELEC. DES. APP.			
MECH. DES. APP.			

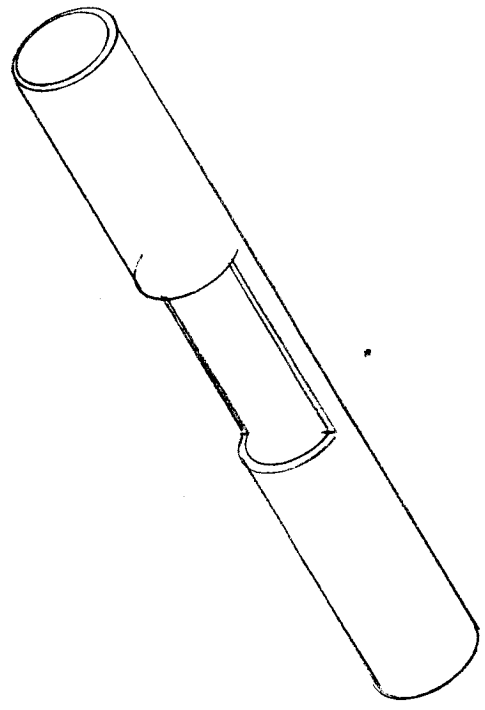
TOLERANCES

DEC. DIM. ±
 FRAC. DIM. ±
 ANGULAR DIM. ±

SCALE:
 MAXIMUM ALLOWABLE TOLERANCES HAVE BEEN DETERMINED AND ANY DEVIATIONS WILL BE CAUSE FOR REJECTION. REMOVE ALL BURRS AND SHARP EDGES

REQ. PER UNIT 2	USED ON	DATE
	MODEL A-1421	

CU-125



REF: NATIONAL ELECTRIC PROD. P/O # CF2-617

REQ. ITEM	PART NO.	DESCRIPTION	SYMBOL
		THE TECHNICAL MATERIEL CORP. MAMARONECK. NEW YORK	
		CONNECTOR, CRIMP	
		P/O PO-137	
		DRAWN <i>[Signature]</i>	
		CHECKED	FINAL APPROVAL
		ELEC. DES. APP. MECH. DES. APP.	CU-125
		FINISH & SPEC. NO.	

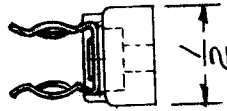
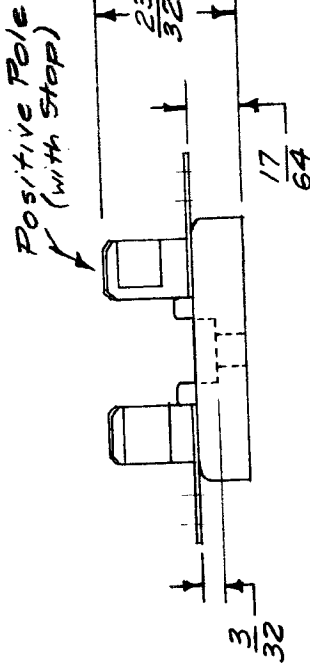
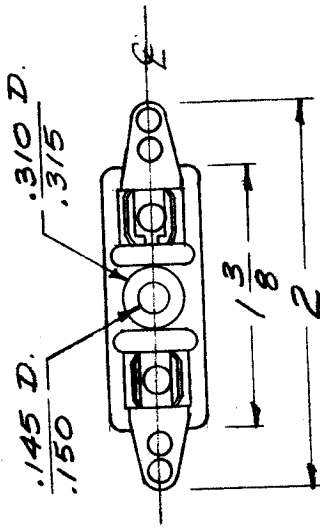
SCALE:
MAXIMUM ALLOWABLE TOLERANCES HAVE BEEN DETERMINED AND ANY DEVIATIONS WILL BE CAUSE FOR REJECTION.
REMOVE ALL BURRS AND SHARP EDGES

TOLERANCES
DEC. DIM. \pm
FRAC. DIM. \pm
ANGULAR DIM. \pm

CU-128

REV. UNIT	MODEL	USED ON	DATE
2	RTP-2	ASBY. N.	11-4-58

CLIPS - spring bronze, Albaloy Plated



Ref. BUSSMAN MFG CO. NO. 3794 Single Pole

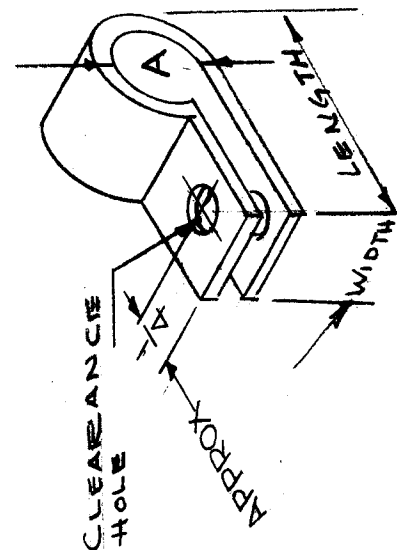
REQ. ITEM	PART NO.	DESCRIPTION	SYMBOL
		THE TECHNICAL MATERIEL CORP.	
		MAMARONECK, NEW YORK	
		BLOCK, MOUNTING, RECTIFIER,	
		POLARIZED	
		16/14/58	
		CHECKED	
		DRAWN	
		HEAT TREAT. SPEC.	
		MATERIAL	
		TYPE & TEMPER	
		FINISH & SPEC. NO.	
		ELEC. DES. APP. MECH. DES. APP.	
		FINAL APPROVAL	CU-128

SCALE: FULL
 MAXIMUM ALLOWABLE TOLERANCES HAVE BEEN DETERMINED AND ANY DEVIATIONS WILL BE CAUSE FOR REJECTION:
 REMOVE ALL BURRS AND SHARP EDGES

CU-130 D

UNIT	MODEL	DATE

TRC NO.	MFG. NO.	A	CLEARANCE HOLE FOR	WIDTH	LENGTH	THICK
CU-130-1	51A	1/8	10	1/2	13/16	.050
CU-130-2	51	1/4	10	1/2	7/8	.050
CU-130-3	52	5/16	10	1/2	15/16	.050
CU-130-4	53	3/8	10	1/2	1	.050
CU-130-5	54	1/2	10	1/2	1-1/8	.050
CU-130-6	54A	5/8	10	1/2	1-1/4	.050
CU-130-7	55	3/4	1 1/16-20	3/4	1-9/16	.050
CU-130-8	57	7/8	1 1/16-20	3/4	1-5/8	.050
CU-130-9	56	1	1 1/16-20	3/4	1-3/4	.050
CU-130-10	56A	1-1/8	1 1/16-20	3/4	1-7/8	.050
CU-130-11	56B	1-1/4	1 1/16-20	3/4	2	.050
CU-130-12	54S	1-1/2		1/2	1-1/2	.050



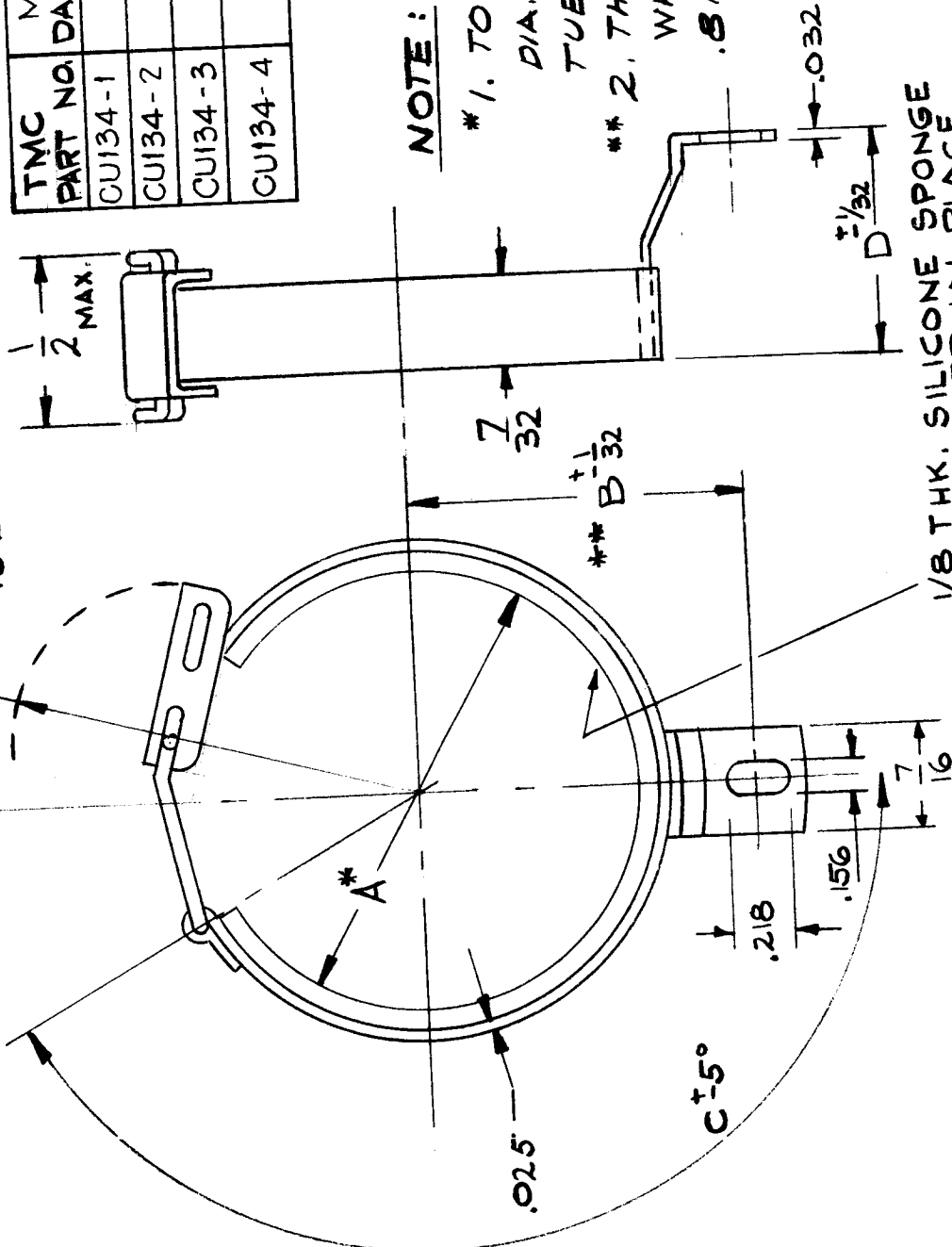
ISSUE ITEM	CHANGED FROM	DATE	CH. NO.	DRAFTS	CHECKER	ENG. APP.	REQ. ITEM	PART NO.	DESCRIPTION	SYMBOL
D 1	ON CU130-12 ADDED MFG. NO.	6-26-63	9377						THE TECHNICAL MATERIEL CORP. MAMARONECK, NEW YORK	
C 2	1/4 DIM ADDED (PICTORIAL) CU-130-12 ADDED	4-30-63	8910							
B 1	TYPE & TEMPER WAS HARD DRAWN	7-31-62	+						CLAMP	
A 1	FINISH & SPEC NO ADDED	3-27-61	4488						ALUMINUM MATERIAL	
							5052-H32			
							TYPE & TEMPER HEAT TREAT. SPEC.			
							S404 YELL IRIDITE			
							FINISH & SPEC. NO.			
TOLERANCES										
SCALE: 3-401-20										
MAXIMUM ALLOWABLE TOLERANCES HAVE BEEN DETERMINED AND ANY DEVIATIONS WILL BE CAUSE FOR REJECTION. REMOVE ALL BURRS AND HARP EDGES										
DEC. DIM. ±										
FRAC. DIM. ±										
ANGULAR DIM. ±										
										CU-130 D

CU-134

USED ON
MODEL ASSY. NO. DATE

REQ. PER UNIT

1/8 MAX. ON
1/8 .812 DIA



NOTE:

- * 1. TO CLAMP FIRM ON .710 OR .812 DIA., T 5 1/2 OR T 6 1/2 MINIATURE TUBE.
- ** 2. THIS DIMENSION MEASURED WHEN MOUNTED ON .710 OR .812 DIA. PLUG, AS INDICATED.

TMC PART NO.	MFG. DASH NO.	REMARKS	A*	B**	C	D
CU134-1	- 4		.812	13/16	145°	17/32
CU134-2	- 5		.812	13/16	145°	1
CU134-3	- 6		.710	3/4	145°	1
CU134-4	- 7	OPEN END	.710	3/4	145°	17/32

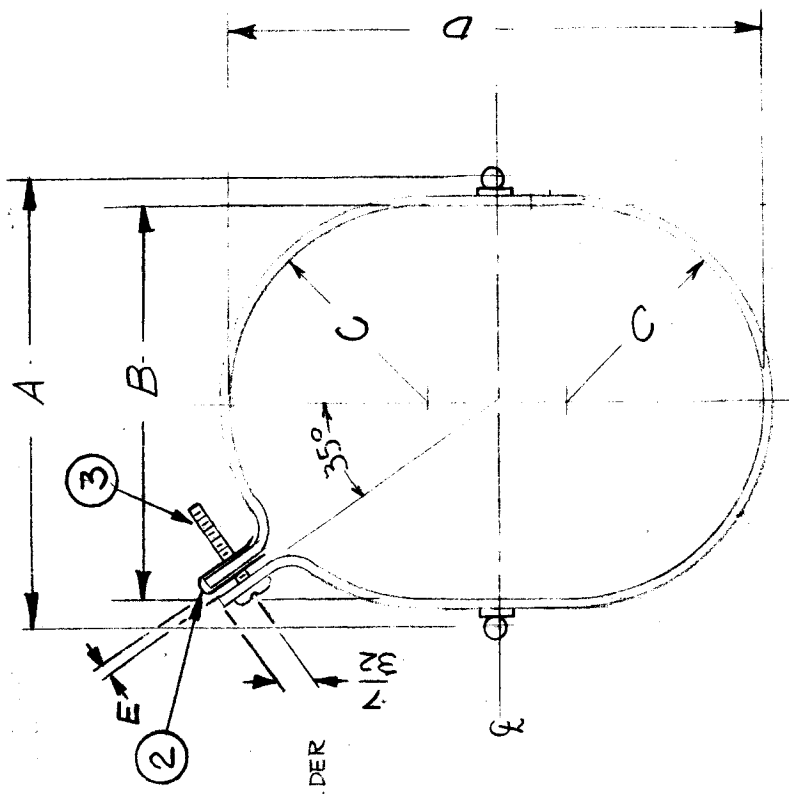
1/8 THK. SILICONE SPONGE CEMENTED IN PLACE

REQ. ITEM	PART NO.	DESCRIPTION	SYMBOL
		THE TECHNICAL MATERIEL CORP. MAMARONECK, NEW YORK	
		TUBE CLAMP	
		STAINLESS STEEL	
		MATERIAL	
	302		
		TYPE & TEMPER	
		HEAT TREAT. SPEC.	
		PASSIVATION	
		FINISH & SPEC. NO.	
ISSUE	ITEM	CHANGED FROM	
TOLERANCES			
SCALE: 5401-105 (2510)			
MAXIMUM ALLOWABLE TOLERANCES HAVE BEEN DETERMINED AND ANY DEVIATIONS WILL BE CAUSE FOR REJECTION. REMOVE ALL BURRS AND SHARP EDGES			
DEC. DIM. ±			
FRAC. DIM. ±			
ANGULAR DIM. ±			
		DRAWN	
		CHECKED	
		FINAL APPROVAL	
			CU-134

CU-135 F

TMC PART NUMBER	"A"	"B"	"C"	"D"	"E"	USED ON
CU135	2 3/8	2 1/8	1 1/16	2 7/8	3/16	CPP-2
CU135-2	2 3/16	2	1	3 1/16	3/16	RTPH-1
CU135-3	1-1/2	1-1/4	5/8	2-1/16	3/16	RTTD-4

NOTE:
 SPOT WELD
 SPADE BOLTS
 AS SHOWN,
 THEN SILVER SOLDER
 TO CLAMP



REG. ITEM	PART NO.	DESCRIPTION	SYMBOL
X 4	BS 101	SOLDER, SILVER	
1	SCBP0632BN8	SCREW, MACHINE	
1	NT-108-1	NUT, SPEED	
2	SC-107-2	BOLT, SPADE	
		THE TECHNICAL MATERIEL CORP.	
		MAMARONECK, NEW YORK	
		CLAMP, CAPACITOR	
		MOUNTING	
		MATERIAL	
		STEEL	
		MILD	
		HEAT TREAT. SPEC.	
		NICKEL PLATE	
		FINISH & SPEC. NO.	
		TYPE & TEMPER	
		CHECKED	
		DRAWN	
		FINAL APPROVAL	
		CU-135	F

ISSUE ITEM	CHANGED FROM	DATE	CH. NO.	DRAFTS	CHECKER	ENG. APP.
F	CU135 - 3 ADDED	1/22/69				
E	CHART ADDED	11/30/65				
D	IT 2, 3, 4 STOCK SIZE ADD. IT 1, 2, 3 NOTES DELETE.	9.16.64	12239			
C	SILVER SOLDER ADDED TO NOTE LEFT BOTTOM VIEW ADDED	9-11-62	7330			
B	ITEM (U) ADDED	2-1-62	2777			
A	3/8 DIM WAS 1/2	4/27/61	4770			
	1-1/8 WAS 1/2, INTO DETAIL added					
	RELOCATED SPADE BOLTS					

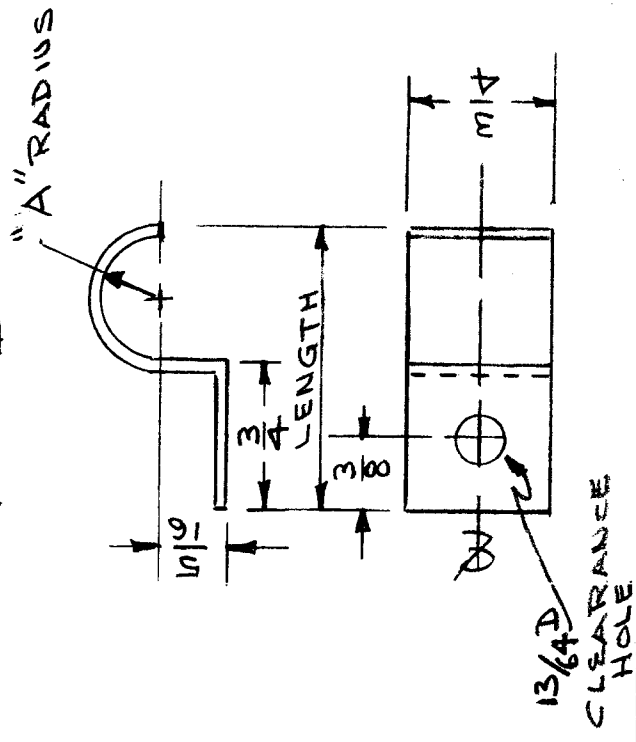
SCALE:
 MAXIMUM ALLOWABLE TOLERANCES HAVE BEEN DETERMINED AND ANY DEVIATIONS WILL BE CAUSE FOR REJECTION. REMOVE ALL BURRS AND SHARP EDGES

REQ. PER. UNIT	USED ON	MODEL	ASST. NO.	DATE
	CU-136			3-15-61

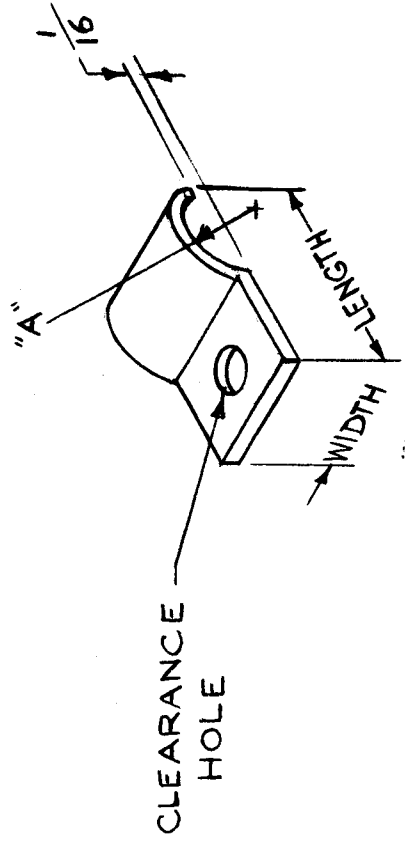
MODEL	ASST. NO.	DATE

TMC PART NO.	"A" RADIUS	CLEARANCE HOLE FOR	WIDTH	LENGTH	MATERIAL THICK.	DETAIL	MODEL USED ON
CU-136-1	1/4"	# 10	1/2"	1 1/8	.050	A	CHG
CU136-2	11/32	# 8	3/4	1 7/16	.032	B	RTTD-5A

DETAIL B



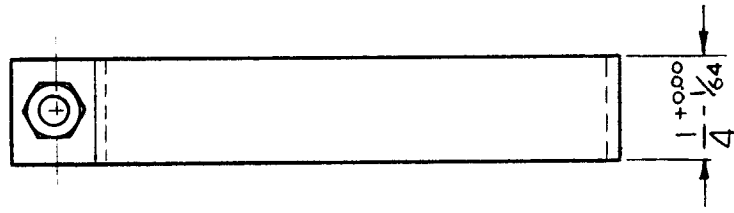
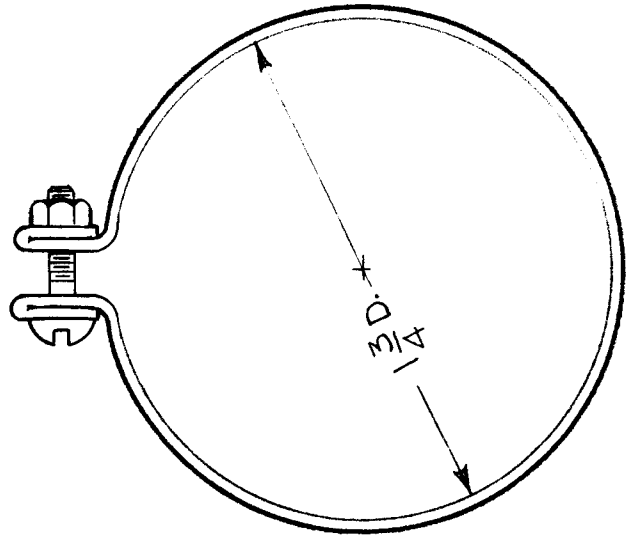
DETAIL A



REQ. ITEM	PART NO.	DESCRIPTION	SYMBOL
	SEE CHART	THE TECHNICAL MATERIEL CORP.	
	ALUMINUM	MAMARONECK, NEW YORK	
	HARD DRAWN	CLAMP, OPEN END	
ISSUE ITEM	CHANGED FROM	MATERIAL	
A	DET. B ADDED	ALUMINUM	
	DATE	TYPE & TEMPER	
	8/26/67	S404 YELL. IRIDITE	
	CH. NO.	HEAT TREAT. SPEC.	
	19576		
	DRAFTS	FINISH & SPEC. NO.	
	SDM		
	CHECKER	ELEC. DES. APP	
	ENG. APP.		
SCALE: DO NOT SCALE			
TOLERANCES			
MAXIMUM ALLOWABLE TOLERANCES HAVE BEEN DETERMINED AND ANY DEVIATIONS WILL BE CAUSE FOR REJECTION. REMOVE ALL BURRS AND SHARP EDGES			
DEC. DIM. ±		CHECKED	FINAL APPROVAL
FRAC. DIM. ± 1/64		W.A.F.	
ANGULAR DIM. ±			
			CU-136
			A

USED ON
CU-137

REQ. PER. UNIT
MODEL
ASSY. NO.
DATE

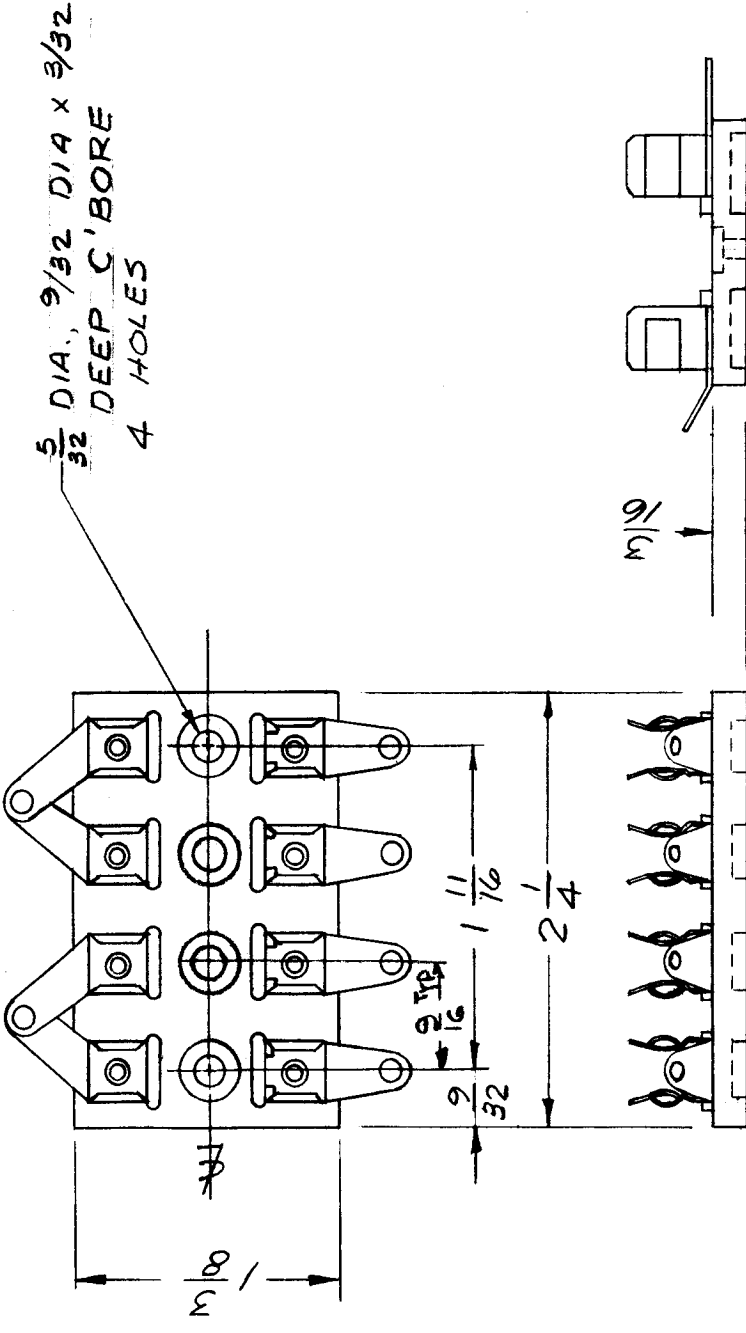


REQ. ITEM	PART NO.	DESCRIPTION	SYMBOL
		THE TECHNICAL MATERIEL CORP. MAMARONECK, NEW YORK	
		ASSEMBLY (CLAMP)	
		STAINLESS STEEL	
		MATERIAL	
		TYPE & TEMPER	
		HEAT TREAT. SPEC.	
		FINISH & SPEC. NO.	
		SCALE: S-401-70-2259	
		MAXIMUM ALLOWABLE TOLERANCES HAVE BEEN DETERMINED AND ANY DEVIATIONS WILL BE CAUSE FOR REJECTION. REMOVE ALL BURRS AND SHARP EDGES	
		DATE	
		CH. NO.	
		DRAFTS	
		CHECKER	
		ENG. APP.	
		ISSUE ITEM	
		CHANGED FROM	
		TOLERANCES	
		DEC. DIM. ±	
		FRAC. DIM. ±	
		ANGULAR DIM. ±	
		G.D.L.	
		DRAWN	
		CHECKED	
		FINAL APPROVAL	
			CU-137

THE CONTENTS OF THIS DRAWING ARE THE EXCLUSIVE PROPERTY OF THE TECHNICAL MATERIEL CORP. ITS UNAUTHORIZED USE OR REPRODUCTION IN WHOLE OR IN PART IS STRICTLY FORBIDDEN.

REQ. PER UNIT: 1
 MODEL: GPR-92
 USED ON ASS'Y. NO.:
 DATE: 10-4-61

CU-138 B



REF: MS-3030

SYM	DESCRIPTION	DATE	CH. NO.	DRAFTS	CHECKER	ENG. APP.	REQ. ITEM	PART NO.	DESCRIPTION	SYMBOL	
B	OBsolete NOTE DELETED	7-25-62	7542	W	W	W			THE TECHNICAL MATERIEL CORP. MAMARONECK, NEW YORK BLOCK, MOUNTING, POLARIZED FOR RECTIFIERS	BP	
A	REPLACED BY A-3047	7-25-62	6934	8 8.							
SYMBOL											
UNLESS OTHERWISE SPECIFIED:											
DIMENSIONS ARE IN INCHES											
TOLERANCES ON											
FRAC. ± 1/64 DEC. ± .005 ANGLES ± 1/2°											
MAXIMUM ALLOWABLE TOLERANCES HAVE BEEN DETERMINED AND ANY DEVIATIONS WILL BE CAUSE FOR REJECTION. REMOVE ALL BURRS AND SHARP EDGES											
SCALE: 5:1-149(099)079											
TYPE & TEMPER							HEAT TREAT. SPEC.				
FINISH & SPEC. NO.											
DRAWN							CHECKED	FINAL APPROVAL			
<i>W</i>							<i>MP</i>				

THE CONTENTS OF THIS DRAWING ARE THE EXCLUSIVE PROPERTY OF THE TECHNICAL MATERIEL CORP. ITS UNAUTHORIZED USE OR REPRODUCTION IN WHOLE OR IN PART IS STRICTLY FORBIDDEN.

CU-139

DATE

MODEL

USED ON
ASSY. NO.

REQ. PER UNIT

TMC PART NO.

FOR HANDLE DIAMETER

A

B

C
±004

D

E

F
±002

MATERIAL

MFG. NO.

CU-139-1

1/4

3/16

.062

1/4

11/32

.259

Brass

6446

CU-139-2

5/16

7/32

.062

1/4

13/32

.320

Brass

6441

CU-139-3

3/8

1/4

.093

3/8

15/32

.382

Brass

6444

CU-139-4

5/32

7/64

.047

1/8

13/64

.161

Brass

1952-2

CU-139-5

5/16

7/32

.062

1/4

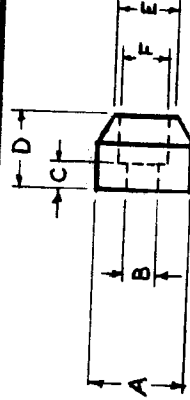
13/32

.320

ALUMAL

FINISH CHART

TMC FINISH CODE	ADD THE FOLLOWING TO MFG'S. PART NO.	FINISH
N	-4	Nickel Plate Polished
B	-6	Black Oxide
A		BLACK ANODIZED



TMC Part No. Shall Be In The Following Form:

CU-139-1 B

Basic TMC No. & Size

Finish Code

Reference: AMATOM

REQ. ITEM	PART NO.	DESCRIPTION	SYMBOL
		THE TECHNICAL MATERIEL CORP. MAMARONECK, NEW YORK	
		FERRULE, HANDLE	
		MATERIAL	
		STOCK SIZE	
		TYPE & TEMPER	
		MEATTREAT. SPEC.	
		CHECKED	
		DRAWN	
		FINISH & SPEC. NO.	
		ELEC. DES. APP.	
		MECH. DES. APP.	

UNLESS OTHERWISE SPECIFIED: DIMENSIONS ARE IN INCHES TOLERANCES ON

FRAC. ± 1/64 DEC. ± .005 ANGLES ± 1/2°

MAXIMUM ALLOWABLE TOLERANCES HAVE BEEN DETERMINED AND ANY DEVIATIONS WILL BE CAUSE FOR REJECTION. REMOVE ALL BURRS AND SHARP EDGES

SCALE:

DATE CH. NO. DRAFTS CHECKER ENG. APP.

8/24/82 21983

12/18/83 10597

THE CONTENTS OF THIS DRAWING ARE THE EXCLUSIVE PROPERTY OF THE TECHNICAL MATERIEL CORP. ITS UNAUTHORIZED USE OR REPRODUCTION IN WHOLE OR IN PART IS STRICTLY FORBIDDEN.

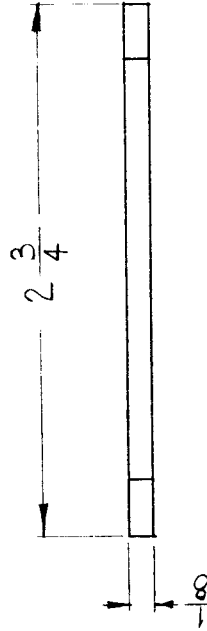
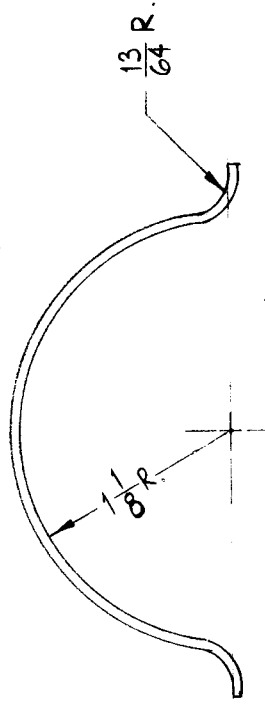
REQ. PER UNIT
4

USED ON
ASS'Y. NO.

DATE
8-15-62

MODEL
HFS-1

CU-140



REQ. ITEM	PART NO.	SYMBOL
18 GA.	STRUMER	DESCRIPTION
STOCK SIZE	THE TECHNICAL MATERIEL CORP.	
STEEL	MAMARONECK. NEW YORK	
MATERIAL	CLIP, WINDOW, RETAINING	
SPRING HARDENED	W.A.F.	DRAWN
TYPE & TEMPER	J.D.R.	CHECKED
HEATTREAT. SPEC.	JMA	FINAL APPROVAL
BLACK NICKEL	JMA	CU-140
FINISH & SPEC. NO.	JMA	MECH. DES. APP.

DESCRIPTION

UNLESS OTHERWISE SPECIFIED:
DIMENSIONS ARE IN INCHES
TOLERANCES ON
FRAC. ± 1/64 DEC. ± .003 ANGLES ± 1/2°

SCALE: DO NOT SCALE

MAXIMUM ALLOWABLE TOLERANCES HAVE BEEN DETERMINED AND ANY DEVIATIONS WILL BE CAUSE FOR REJECTION. REMOVE ALL BURRS AND SHARP EDGES

DATE CH. NO. DRAFTS CHECKER ENG. APP.

THE CONTENTS OF THIS DRAWING ARE THE EXCLUSIVE PROPERTY OF THE TECHNICAL MATERIEL CORP. ITS UNAUTHORIZED USE FOR REPRODUCTION IN WHOLE OR IN PART IS STRICTLY FORBIDDEN.

REQ. PER UNIT
1

MODEL
SPU-2

USED ON
ASSY. NO.

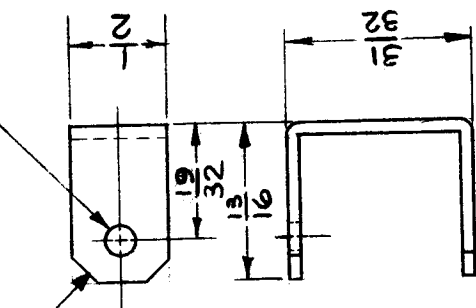
DATE
12-14-62

CU-144
A

OBSOLETE NO LONGER REQUIRED

4-4-63 EMN 8702 ~~PC~~

$\frac{1}{8}$ x 45° CHAMFER
TYP.
 $\frac{5}{32}$ DIA. 1 REQ



SCALE
FULL

DATE
4-4-63

CH. NO.
8702

CHECKER
EMN

DRAFTS
PC

ENG. APP.
[Signature]

DESCRIPTION
NO LONGER REQUIRED

SYMBOL
A

REQ. ITEM
1

PART NO.
064 x 1/2 STRIP

STOCK SIZE
ALUMINUM

MATERIAL
5052-H32

TYPE & TEMPER
S404

HEAT TREAT. SPEC.
YELLOW

FINISH & SPEC. NO.
REVIDITE

DESCRIPTION
CLAMP, CABLE

THE TECHNICAL MATERIEL CORP.
MAMARONECK, NEW YORK

STRUMER

SYMBOL
A

FINAL APPROVAL
CU-144

DRAWN
TRAMIREZ

CHECKED
[Signature]

ELEC. DES. APP.
[Signature]

MECH. DES. APP.
[Signature]

REPRODUCTION IN WHOLE OR IN PART IS STRICTLY FORBIDDEN.

UNLESS OTHERWISE SPECIFIED DIMENSIONS ARE IN INCHES AND INCLUDE CHEMICALLY APPLIED OR PLATED FINISHES

TOLERANCES
DECIMALS
.X ± .05
.XX ± .01
.XXX ± .005

FRACTIONS
± 1/64

ANGLES
± 0° 30'

SCALE
FULL

DATE
4-4-63

CH. NO.
8702

CHECKER
EMN

DRAFTS
PC

ENG. APP.
[Signature]

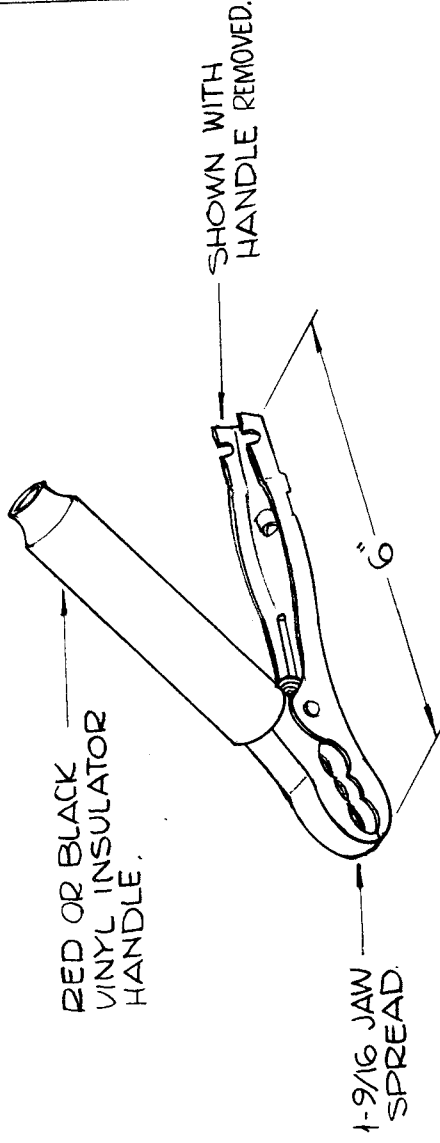
DESCRIPTION
NO LONGER REQUIRED

SYMBOL
A

CU-146 0

REQ. PER UNIT	USED ON
1	MODEL
	ASSY. NO.
	DATE
	GPT-200K A-1990 12-10-63

SPECIFICATION
200 AMP.



REF: MUELER ELECTRIC CO
NO. 41-C

REQ. ITEM	PART NO.	F. BUDETTI	DESCRIPTION	SYMBOL
			THE TECHNICAL MATERIEL CORP. MAMARONECK. NEW YORK	
			HIPPO-CLIP	
			SOLD COPPER	
			MATERIAL	
			TYPE & TEMPER	
			HEAT TREAT. SPEC.	
			FINISH & SPEC. NO.	
			ELEC. DES. APP.	
			MECH. DES. APP.	
			CHECKED	
			DRAWN	
			FINAL APPROVAL	
			CU-146	0

0 ORIGINAL RELEASE 5.16.64

DATE CH. NO. DRAFTS CHECKER ENG. APP.

SCALE

UNLESS OTHERWISE SPECIFIED
DIMENSIONS ARE IN INCHES AND INCLUDE
CHEMICALLY APPLIED OR PLATED FINISHES

FRACTIONS ± 1/64
ANGLES ± 0° 30'

TOLERANCES

DECIMALS
.X ± .05
.XX ± .01
.XXX ± .005

THE CONTENTS OF THIS DRAWING ARE THE EXCLUSIVE PROPERTY OF THE TECHNICAL MATERIEL CORP. ITS UNAUTHORIZED USE FOR REPRODUCTION IN WHOLE OR IN PART IS STRICTLY FORBIDDEN.

REQ. PER UNIT

1

USED ON

MODEL

VLR-1

DATE

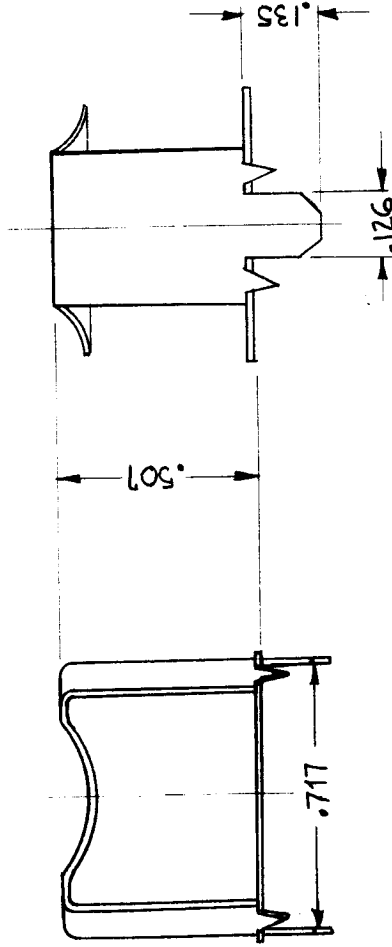
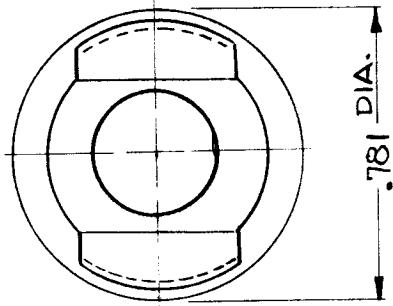
5-27-63

ASSY. NO.

A-3167

CU 147

A



REQ. ITEM		PART NO.		M. GELLMAN DESCRIPTION		SYMBOL	
		A		THE TECHNICAL MATERIEL CORP. MAMARONECK, NEW YORK			
NICKEL SILVER		STOCK SIZE		RETAINER, CUP CORE			
MATERIAL		A		DRAWN		FINAL APPROVAL	
TYPE & TEMPER		HEAT TREAT. SPEC		ELEC. DES. APP.		MECH. DES. APP.	
FINISH & SPEC. NO.		A		G. Jovan		RAC	
S401-213 (BA02-Y)		2:1		A.M.		CU 147	
DESCRIPTION		DATE		CHECKER		ENG. APP.	
A RELOC. .717 DIM ORIGINAL RELEASE FOR PRODUCTION		5-11-64		RME		A.M.	
UNLESS OTHERWISE SPECIFIED DIMENSIONS ARE IN INCHES AND INCLUDE CHEMICALLY APPLIED OR PLATED FINISHES		SCALE		CH. NO.		DRAFTS	
FRACTIONS ± 1/64 ANGLES ± 0° 30'		2:1		8		2	
TOLERANCES		DECIMALS		.X ± .05		.XX ± .01	
		.XXX ± .005					

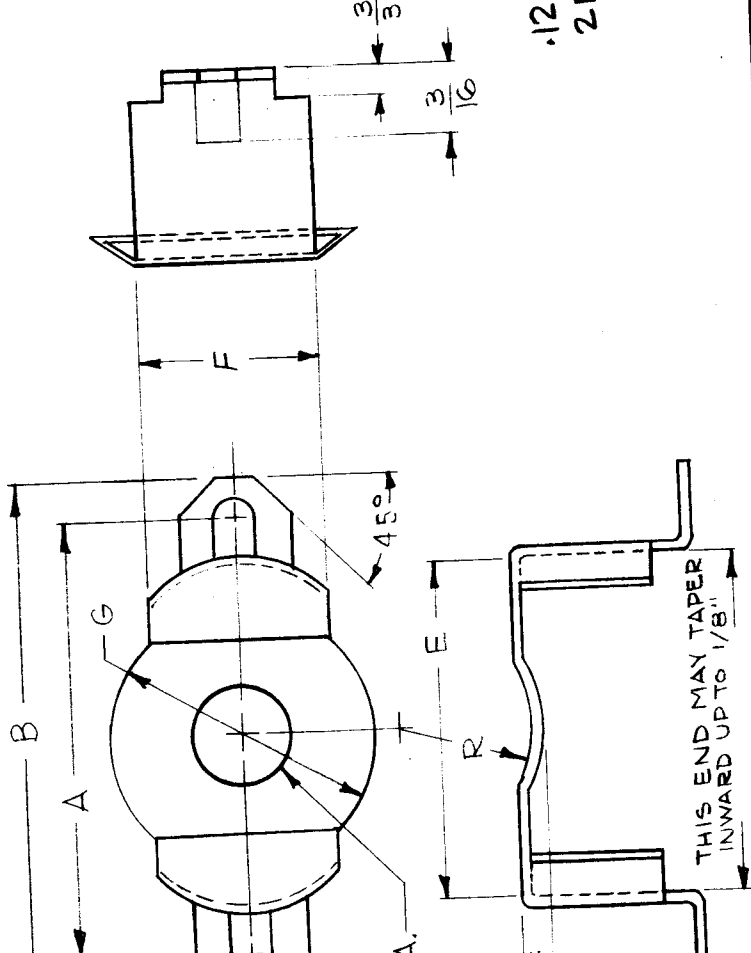
CU 148 A

USED ON
 ASSY. NO. 5-29-63
 DATE 5-29-63

REQ. PER UNIT 4
 MODEL VLR-1
 TMC PART NO. CU 148-1

THE CONTENTS OF THIS DRAWING ARE THE EXCLUSIVE PROPERTY OF THE TECHNICAL MATERIEL CORP. ITS UNAUTHORIZED USE FOR REPRODUCTION IN WHOLE OR IN PART IS STRICTLY FORBIDDEN.

A ±.004	B ±.010	C ±.010	D	E ±.000	F ±.005	G ±.005	H ±.005	J ±.005
1.102	1.299	.595	.533 ^{+.005} _{-.015}	.866	.551	.787	.314	.375
								.750



REQ. ITEM	PART NO.	M, GELLMAN	DESCRIPTION	SYMBOL
			THE TECHNICAL MATERIEL CORP. NEW YORK	
			MAMARONECK.	
			RETAINER, CUP CORE	
			NICKEL SILVER	
			MATERIAL	
			STOCK SIZE	
			TYPE & TEMPER	
			HEAT TREAT. SPEC.	
			FINISH SPEC. NO.	
			ELEC. DES. APP.	
			MECH. DES. APP.	
			FINAL APPROVAL	
			CU 148	A

OGILVIE PRESS, INC., BROOKLYN 17, N. Y. REPROVAL NO. 400H 3787

STANDARD DRAWING

S401-118 (2213H)

DO NOT SCALE

UNLESS OTHERWISE SPECIFIED DIMENSIONS ARE IN INCHES AND INCLUDE CHEMICALLY APPLIED OR PLATED FINISHES

TOLERANCES
 DECIMALS ±.001
 FRACTIONS ± 1/64
 ANGLES ± 0° 30'

DATE 12/19/63

CH. NO. 1

DRAPTS CHECKER

ENG. APP.

ADDED BAKELITE WASHERS 6-29-76
 BRASS PLATE PICTORIAL
 ORIGINAL RELEASE FOR PRODUCTION
 TYPE (2213) ADDED TO

6-29-76
 5-11-64
 12/19/63

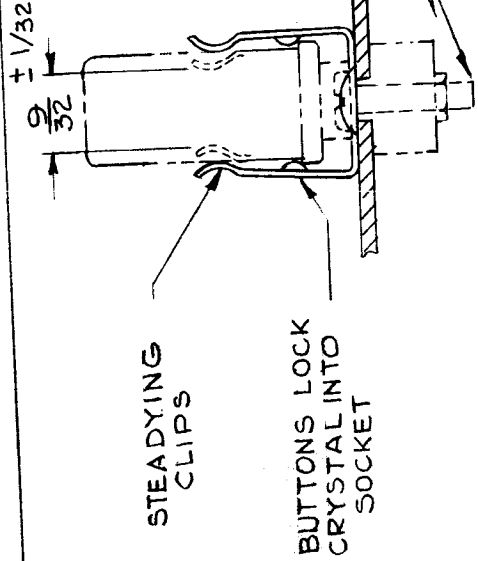
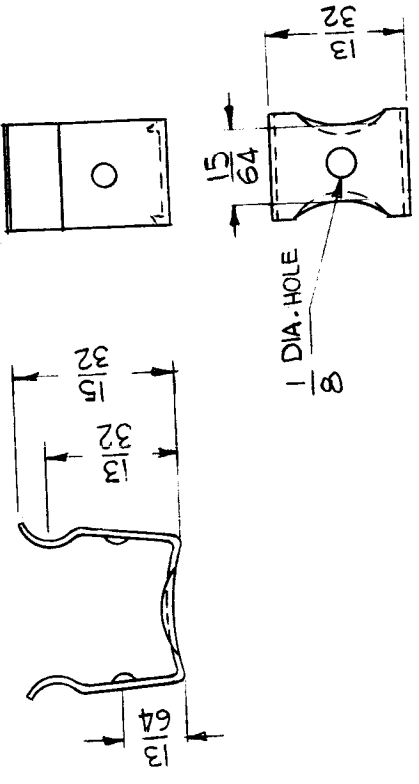
GDL
 A.M.
 J.P.

CU-149

USED ON
 ASS'Y. NO.
 DATE
 7-3-63

THE CONTENTS OF THIS DRAWING ARE THE EXCLUSIVE PROPERTY OF THE TECHNICAL MATERIEL CORP. ITS UNAUTHORIZED USE FOR REPRODUCTION IN WHOLE OR IN PART IS STRICTLY FORBIDDEN.

TTR-10
 MFRS.
 PART NO.
 FOR USE WITH HOLDERS
 HC-6/U, 13/U, 14/U, 17/U
 K-33082



- SPECIFICATIONS:**
1. MATERIAL: .018 THK. PHOSPHOR BRONZE
 2. FINISH: NICKEL
 3. APPLICATION: FOR USE WITH HOLDERS SHOWN IN CHART
 4. INSTALLATION: SEE DETAIL
 5. MTG. HARDWARE NOT SUPPLIED

REQ. ITEM	PART NO.	DESCRIPTION	SYMBOL
SEE SPEC. No.1		THE TECHNICAL MATERIEL CORP. MAMARONECK, NEW YORK	
SEE SPEC. No.2		RETAINER, CRYSTAL HOLDER	
		MATERIAL	
		TYPE & TEMPER	
		HEAT TREAT. SPEC.	
		SEE SPEC. No.2	
		FINISH & SPEC. NO.	
		SCALE	
		NOT TO SCALE	
		DATE	
		CH. NO.	
		DRAFTS	
		CHECKER	
		ENG. APP.	
		DESCRIPTION	
		UNLESS OTHERWISE SPECIFIED	
		DIMENSIONS ARE IN INCHES AND INCLUDE	
		CHEMICALLY APPLIED OR PLATED FINISHES	
		FRACTIONS	
		± 1/64	
		ANGLES	
		± 0° 30'	
		TOLERANCES	
		DECIMALS	
		X ± .05	
		XX ± .01	
		XXX ± .005	
		CODE	
		S401-101	
		DRAWN	
		RAW Kohn	
		7-18-63	
		ELEC. DES. APP.	
		MECH. DES. APP.	
		CHECKED	
		G.D.L	
		7-16-63	
		FINAL APPROVAL	
		VFH	
		CU-149	

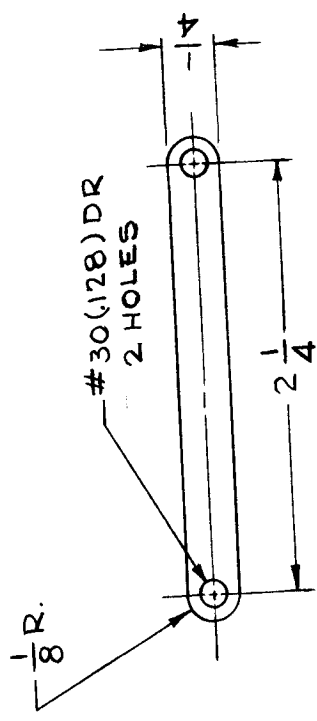
CU 152

DATE
5/4/64

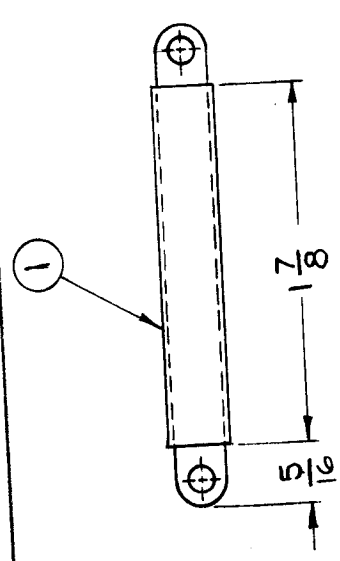
USED ON
ASSY. NO.

MODEL
ARCA

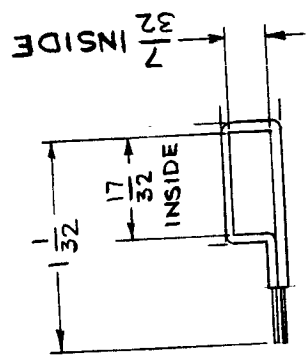
REQ. PER UNIT



MATERIAL: .015 THK COPPER
FINISH: S105 BRIGHT CADMIUM PLATE
MACHINING (CU-152-1)



ASSEMBLY (CU-152-2)



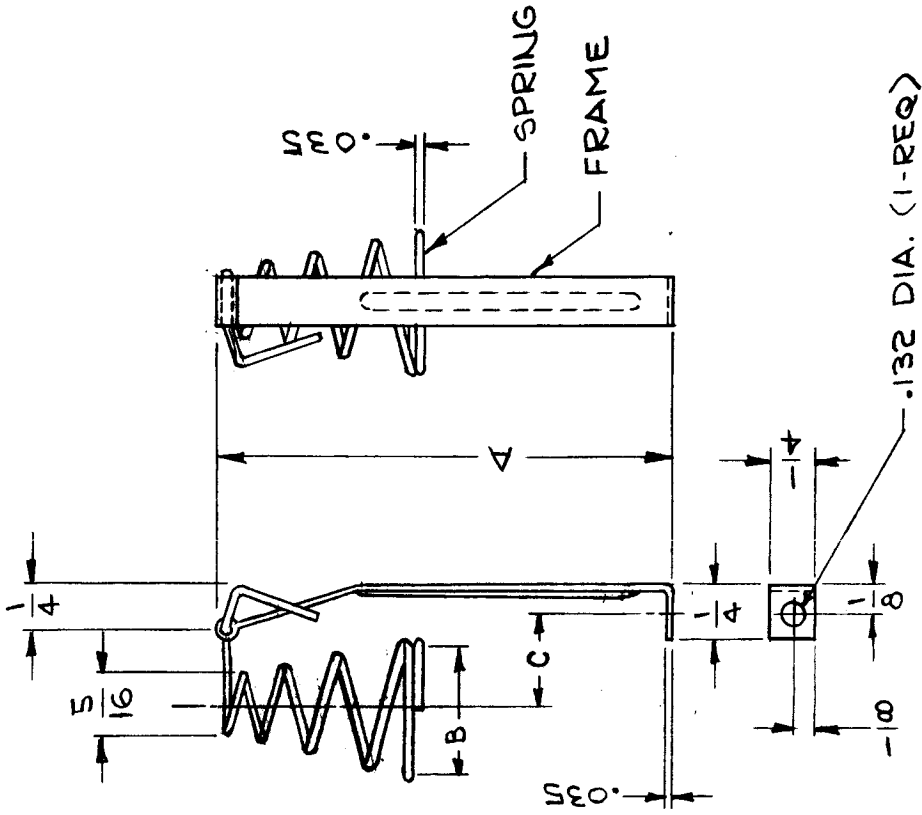
FORMING (CU-152-3)

REQ. ITEM	1	PX-100-1-166	SLEEVING, INSULATION	SYMBOL
PART NO.			EATON	
STOCK SIZE			THE TECHNICAL MATERIEL CORP. MAMARONECK, NEW YORK	
MATERIAL			RETAINER, ARC SUPPRESSOR)	
TYPE & TEMPER			GD	CHECKED
HEAT TREAT. SPEC.			J.M	DRAWN
FINISH & SPEC. NO.			ELEC. DES. APP. MECH. DES. APP.	APPROVAL
			CU 152	Ø

SYM	Ø	DESCRIPTION	DATE	CH. NO.	DRAFTS	CHECKER	ENG. APP.
		ORIGINAL RELEASE FOR PRODUCTION	9-21-68	*			
		UNLESS OTHERWISE SPECIFIED DIMENSIONS ARE IN INCHES AND INCLUDE CHEMICALLY APPLIED OR PLATED FINISHES	SCALE	1:1			
DECIMALS	.XX ± .01	TOLERANCES	FRACTIONS	± 1/64	ANGLES	± 0° 30'	CODE

TMC PART NUMBER	MFG PART NUMBER	TUBE	LENGTH	"A" DIM.	"B" DIA.	"C" DIM.	REQ. UNIT	USED ON	CU153	A
CU153-1	560	7 PIN	1 1/8	1 1/2	11/16	15/32	2	MODEL		
CU153-2	561	7 PIN	1 1/2	1 7/8	11/16	15/32		ASSY. NO.		
CU153-3	562	7 PIN	2	2 3/8	11/16	15/32		DATE	4-8-64	
CU153-4	563	9 PIN	1 1/2	1 7/8	13/16	19/32		GPR-92		

FRAME - COLD ROLLED STEEL
 SPRING - MUSIC WIRE - QQW470
 FINISH - NICKEL PLATE PREFERRED
 CADMIUM PLATE ACCEPTABLE



REQ. ITEM	PART NO.	GELLMAN	DESCRIPTION	SYMBOL
			THE TECHNICAL MATERIEL CORP. MAMARONECK, NEW YORK	
	STOCK SIZE		RETAINER, TUBE	
	MATERIAL			
	TYPE & TEMPER			
	HEAT TREAT. SPEC.			
	FINISH & SPEC. NO.			
	SCALE			
	DATE			
	CH. NO.			
	DRAFTS			
	CHECKER			
	ENG. APP.			
	CODE			
	TOLERANCES			
	FRACTIONS			
	DECIMALS			
	ANGLES			
	FINISH & SPEC. NO.			
	HEAT TREAT. SPEC.			
	TYPE & TEMPER			
	MATERIAL			
	STOCK SIZE			
	PART NO.			
	GELLMAN			
	DESCRIPTION			
	SYMBOL			

USED ON
 ASSY. NO. A2073 DATE 4-15-64
 MODEL SB5-7

CU 154

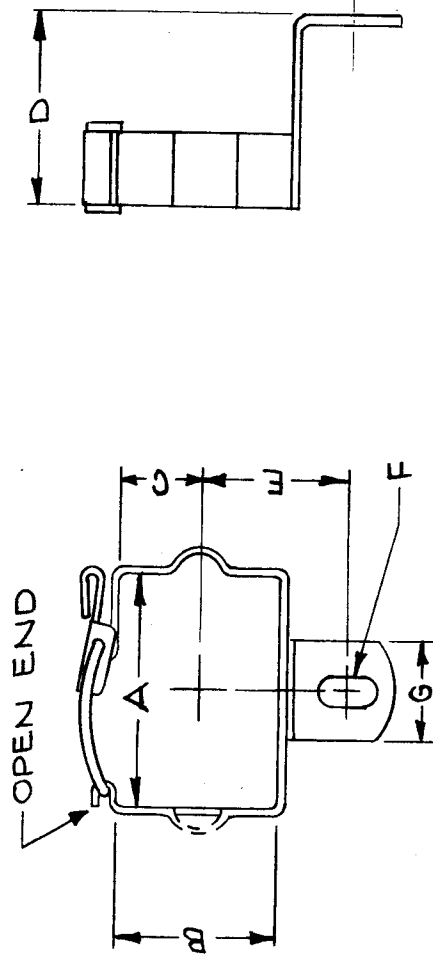
NOTES:

MATERIAL- ALL PARTS 18% NICKEL SILVER

BAND- .020 THK.-SPRING TEMPER
 BRACKET- .032 THK.- 1/4 HARD
 LEVER- .032 THK.- 1/4 HARD
 SPRING- .061 ROUND- SPRING TEMPER

PIN- .062 ROUND- FULL HARD
 FINISH- NITRIC ACID DIP
 IMMUNIZATION.
 TOLERANCE- UNLESS OTHERWISE SPECIFIED ± 1/64.

TMC PART NUMBER	MFG. PART NO.	"A" DIM.	"B" DIM.	"C" DIM.	"D" DIM.	"E" DIM.	"F" SLOT DIM.	"G" DIM.	REMARKS
CU 154-1		1.000	.750	3/8	5/8	5/8	#10	1/2	1 LOOP OPEN END



REQ. PER UNIT	MODEL	ASSY. NO.	DATE	SYMBOL
1	SB5-7	A2073	4-15-64	
O. POSE				
THE TECHNICAL MATERIEL CORP. MAMARONECK. NEW YORK				
RETAINER, ELECTRICAL COMPONENT				
SEE NOTES				
MATERIAL				
DRAWN				
CHECKED				
FINAL APPROVAL				
ELEC. DES. APP. MECH. DES. APP.				
CU 154				

REQ. ITEM	PART NO.	STOCK SIZE	TYPE & TEMPER	HEAT TREAT. SPEC.	FINISH & SPEC. NO.
SEE NOTES					
MATERIAL					
DRAWN					
CHECKED					
FINAL APPROVAL					
ELEC. DES. APP. MECH. DES. APP.					
CU 154					

DATE	CH. NO.	DRAFTS	CHECKER	ENG. APP.
11/1/65	1			

SCALE	CODE
	C

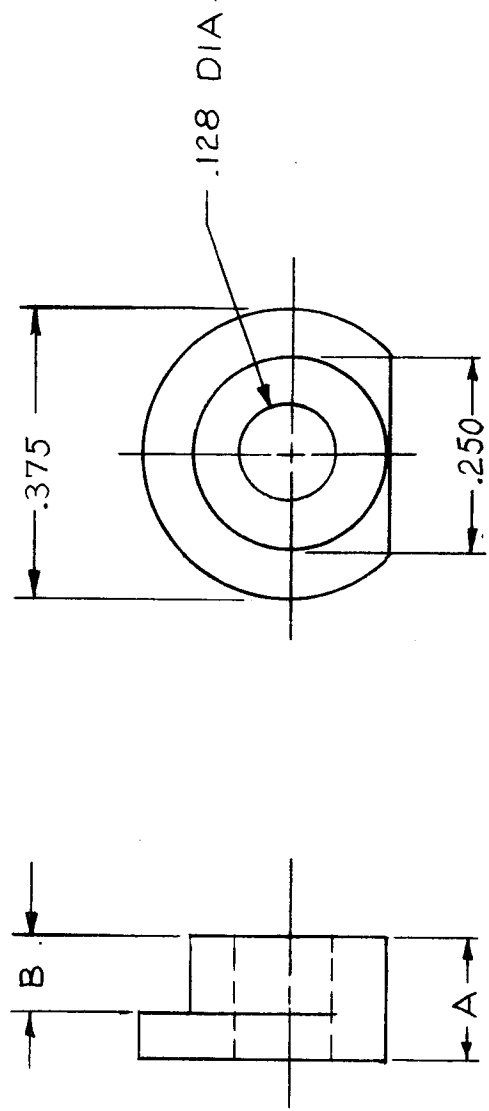
TOLERANCES
DECIMALS
.X ± .05
.XX ± .01
.XXX ± .005
FRACTIONS ± 1/64
ANGLES ± 0° 30'

UNLESS OTHERWISE SPECIFIED DIMENSIONS ARE IN INCHES AND INCLUDE CHEMICALLY APPLIED OR PLATED FINISHES
S401-105

STANDARD DRAWING

TMC NO.	MFR NO.		A	B
	C	D		
CUI55-1	C9	L2-1	.100	.052
CUI55-2	C10	L2-2	.131	.081
CUI55-3	C11	L2-3	.160	.109
CUI55-4	C12	L2-4	.288	.238
CUI55-5	-	L2-5	.263	.213

REQ. PER UNIT	USED ON ASSY. NO.	DATE
	HFR-2	5-7-64
MODEL		
CUI55		A



REQ. ITEM	PART NO.	T. KRUY	DESCRIPTION	SYMBOL
#	STOCK SIZE		THE TECHNICAL MATERIEL CORP. MAMARONECK. NEW YORK	
STAINLESS STEEL			CLAMP	
# 303	MATERIAL	A. MARINO	MOTOR MOUNT	
TYPE & TEMPER	HEAT TREAT. SPEC.	DRAWN	CHECKED	FINAL APPROVAL
S104 - PASSIVATE				
FINISH & SPEC. NO.		ELEC. DES. APP.	MECH. DES. APP.	
				CUI55 A

DATE	CH. NO.	DRAFTS	CHECKER	ENG. APP.
5-5-66	10219	WMD	JS	
8-25-64	9	@		
5/7/64	X	A.M.		
SCALE				
		#		
CODE	S401-196	C		
	S401-350	D		

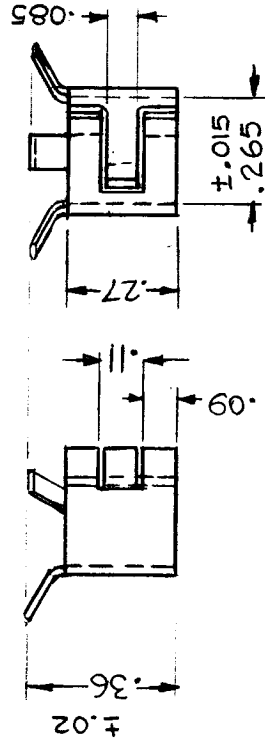
EXPERIMENTAL RELEASE
UNLESS OTHERWISE SPECIFIED DIMENSIONS ARE IN INCHES AND INCLUDE CHEMICALLY APPLIED OR PLATED FINISHES

TOLERANCES
 DECIMALS
 .X ± .05
 .XX ± .01
 .XXX ± .005

FRACTIONS
 ± 1/64
 ANGLES
 ± 0° 30'

STANDARD DRAWING

REQ. PER UNIT		USED ON	CU156 ∅
MODEL	THRA-1	ASS'Y. NO.	
		DATE	9-3-64

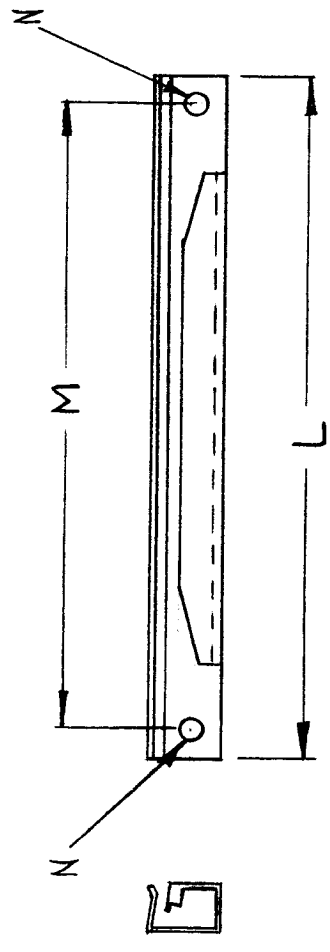


REF: FOR USE WITH BI 112

REQ. ITEM		PART NO.		ALTONEN	DESCRIPTION	SYMBOL
					THE TECHNICAL MATERIEL CORP. MAMARONECK. NEW YORK	
		★	STOCK SIZE		CLIP, SPEED	
∅			6.DL			
X			6.DL			
SYM	DESCRIPTION	DATE	CH. NO.	DRAFTS	CHECKER	ENG. APP.
	UNLESS OTHERWISE SPECIFIED DIMENSIONS ARE IN INCHES AND INCLUDE CHEMICALLY APPLIED OR PLATED FINISHES	9-8-64				
	TOLERANCES	9-3-64		2:1		
DECIMALS	FRACTIONS					
.X ± .05	± 1/64					
.XX ± .01	ANGLES					
.XXX ± .005	± 0° 30'					
		SCALE				
		CODE	S401-153 (7538-XP51)			
	HEAT TREATED	HEAT TREAT. SPEC.				
	TYPE & TEMPER	FINISH & SPEC. NO.				
	-					
	DRAWN	CHECKED				
	G.D.L.	G.D.L.				
	9-3-64	9-3-64				
	ELC. DES. APP.	MECH. DES. APP.				
	-	-				
	FINAL APPROVAL					
	CU156 ∅					

TMC PART #	MFG PART NO.	L	M	N	BOARD THICKNESS	REQ. PER UNIT	USED ON	
							MODEL	ASSY. NO.
CU157-1	35-1027-7	3 1/2	3 1/4	.093	3/32	20	VLRB-1	7-27-64
-2	35-1B-2-4-3	2	1 3/4	.067 ^{+0.003} _{-.001}	1/16		LFCA-1	
-3	35-1B-2-5-3	2 1/2	2 1/4	.067 ^{+0.003} _{-.001}	1/16		LFCA-1	
-4	35-1B-2-7-3	3 1/2	3 1/4	.067 ^{+0.003} _{-.001}	1/16	32	LFSB-1	
-5	35-1B-2-6-3	3	2 3/4	.067 ^{+0.003} _{-.001}	1/16	16	AMC-21C	

CU157 C



NOTE:
 MATERIAL: BERYLLIUM COPPER
 FINISH: CADMIUM PLATE

STANDARD DRAWING

REQ. ITEM	PART NO.	DESCRIPTION	SYMBOL
	0.010	THE TECHNICAL MATERIEL CORP. MAMARONECK. NEW YORK	
	SEE NOTE	RETAINER	
	SEE NOTE	P.C. BOARD	
TYPE & TEMPER	HEAT TREAT. SPEC	DRAWN	CHECKED
SEE NOTE	SEE NOTE	hjb	hjb
FINISH & SPEC. NO.		ELEC. DES. APP. MECH. DES. APP.	FINAL APPROVAL
			CU157 C

SYM	DESCRIPTION	DATE	CH. NO.	DRAFTS	CHECKER	ENG. APP.
C	CU157-5 ADDED	5-15-80	21806	hjb	JL	
B	CU157-4 ADDED	5-14-65	14091	WL	hjb	
A	ON CHART-2&3 CLMNS, MEN DIM. DR.	10-22-64	12687	hjb	hjb	
Ø	ORIGINAL RELEASE	8.3.64	-	hjb		
X	EXPER. RELEASE	7.27.64	-	hjb		

UNLESS OTHERWISE SPECIFIED DIMENSIONS ARE IN INCHES AND INCLUDE CHEMICALLY APPLIED OR PLATED FINISHES	SCALE
	NONE
DECIMALS	CODE
X ± .05	C
XX ± .01	
.XXX ± .005	
TOLERANCES	S401-254
FRACTIONS	
± 1/64	
ANGLES	
± 0° 30'	

STANDARD DRAWING

C/P/N	MFG P/N	A	B	C	D	E	F	G	REQ. PER UNIT	MODEL	USED ON ASSY. NO.	DATE
CU158	1408 H	.590	.540	.365	.511	.354	$\pm .008$.560		VLRB - 1		7-13-64
CU158-2	1811 H	.748	.700	.365	.669	.393	$\pm .008$.720				

CU158 A

NOTE: FOR USE WITH CI137

RETAINER, BOTTOM
MATERIAL ~.012 THICK, BRASS H/H
FINISH ~ CAD. PLATED OR HOT TIN DIPPED
1 REQ.
MFG. CODE "BP"

RETAINER, TOP
MATERIAL ~.012 THICK NICKEL SILVER H/H
1 REQ.
MFG. CODE "C"

WASHER, FIBER
MATERIAL ~.008 $\pm .001$ THICK, BAKELITE
2 REQ.
MFG. CODE "W"

SYMBOL	M. GELLMAN									
DESCRIPTION	THE TECHNICAL MATERIEL CORP. MAMARONECK. NEW YORK									
STOCK SIZE	RETAINER									
MATERIAL	SRG @									
TYPE & TEMPER	DRAWN									
HEAT TREAT. SPEC.	9/18/64									
FINISH & SPEC. NO.	ELEC. DES. APP. MECH. DES. APP.									
CH. NO.	12911	APB	APB	APB	APB	APB	APB	APB	APB	APB
DATE	11.12.64	9.9.64	7.13.64							
SCALE	2:1									
DESCRIPTION	EXPERIMENTAL RELEASE									
UNLESS OTHERWISE SPECIFIED DIMENSIONS ARE IN INCHES AND INCLUDE CHEMICALLY APPLIED OR PLATED FINISHES										
TOLERANCES	C									
FRACTIONS	1/64									
ANGLES	± 0° 30'									
DECIMALS	.XX ± .01									
	.XXX ± .005									
CODE	S 401 - 118									
FINAL APPROVAL	CU158 A									

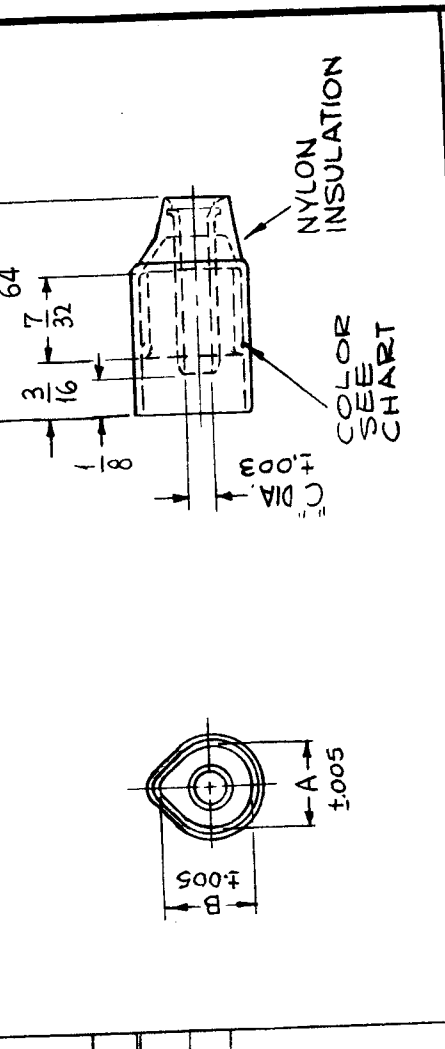
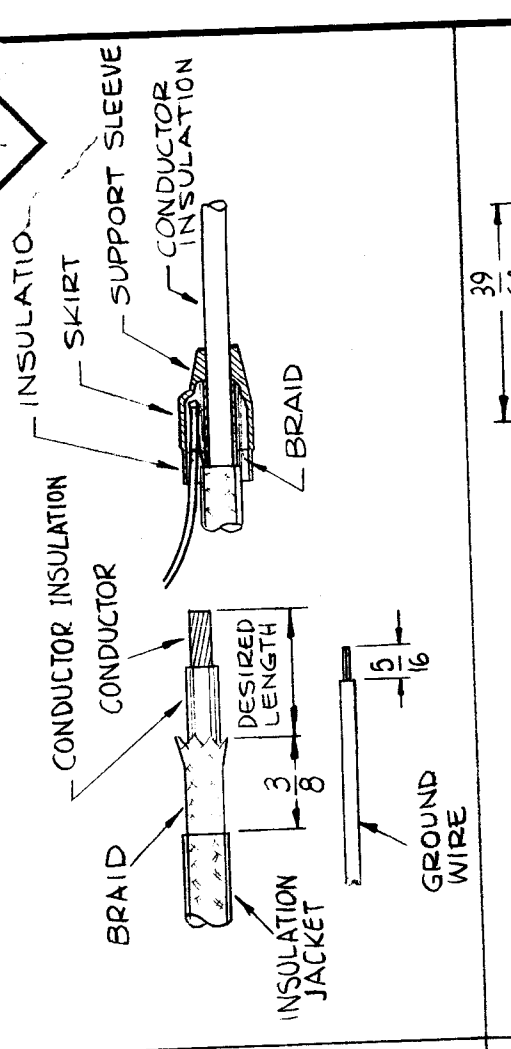
TMC P/N	MFG P/N	COLOR CODE	INNER COND. DIA. RANGE	CABLE ACCOMMODATED	DIMENSIONS		
CU159-1	329331	VIOLET	.045-.065	RG174, RG188	A	B	C
					.150	.185	.070

REQ. PER UNIT	MODEL	ASSY. NO.	DATE
	VLRB-1		10-21-64

SPECIFICATIONS

MATERIAL	COPPER	HEAT TREAT	ANNEALED	FINISH	TIN PLATED
OUTER FERRULE	BRASS	STRESS RELIEVED	TIN PLATED		

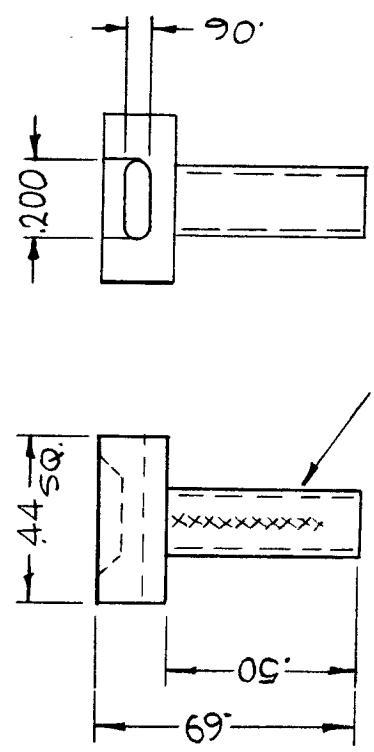
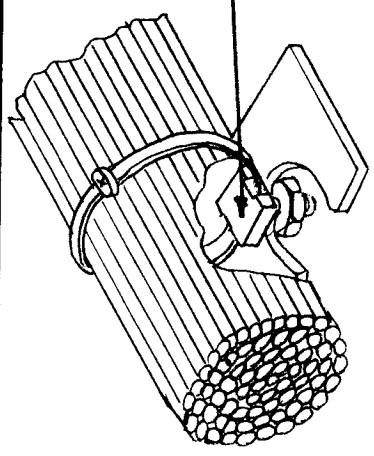
GROUND WIRE SIZE ~ 1#20, 1#22, 1 OR 2#24, 1#26 STRANDED
 1#22, 1 OR 2#24 SOLID,
 MFG TOOL NO. 59500
 DIE NO. 69204-1



REQ. ITEM	PART NO.	DESCRIPTION	SYMBOL
		THE TECHNICAL MATERIEL CORP. MAMARONECK, NEW YORK	
		FERRULE, INSULATED	
		COAX. CABLE	
		MATERIAL	
		SEE SPECS	
		STOCK SIZE	
		SEE SPECS	
		TYPE & TEMPER	
		HEAT TREAT. SPEC.	
		FINISH & SPEC. NO.	
		SEE SPECS	
		DRAWN	
		CHECKED	
		FINAL APPROVAL	
		DATE	
		10-27-64	
		10-22-64	
		DATE	
		CH. NO.	
		DRAFTS	
		CHECKER	
		ENG. APP.	
		SCALE	
		UNLESS OTHERWISE SPECIFIED	
		DIMENSIONS ARE IN INCHES AND INCLUDE	
		CHEMICALLY APPLIED OR PLATED FINISHES	
		FRACTIONS	
		± 1/64	
		ANGLES	
		± 0° 30'	
		± .005	
		TOLERANCES	
		CODE	
		S401-279	
		CU159	

REQ. PER UNIT	MODEL	USED ON ASSY. NO.	DATE
			9-30-65
CU160			Ø

APPLICATION

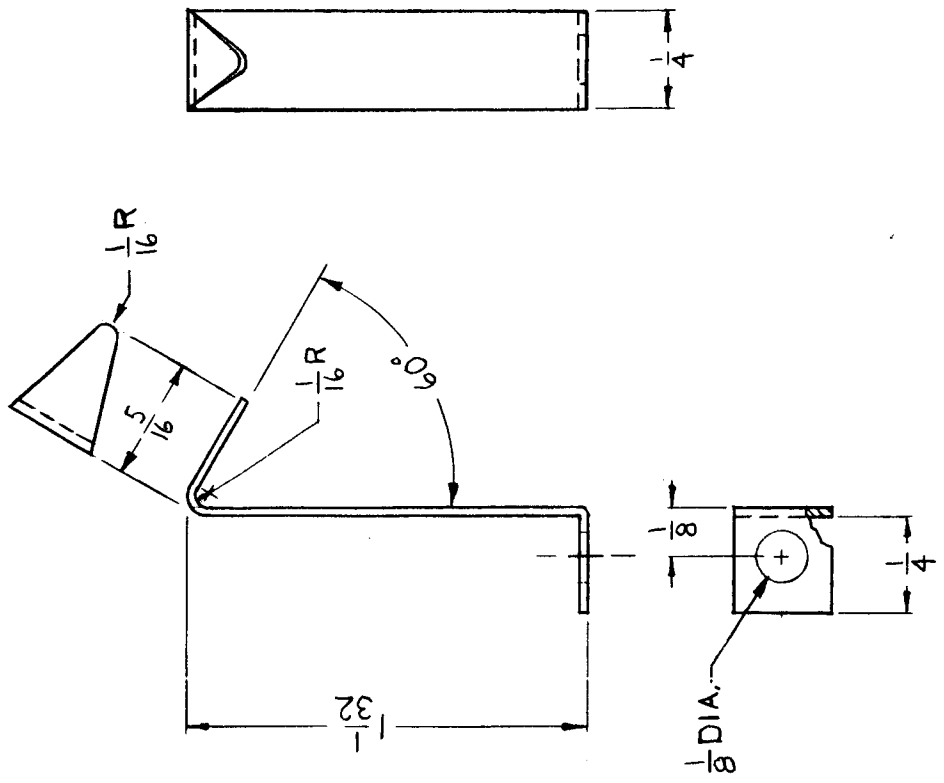


10-32 NF SELF LOCKING
 THREADS
 TMC PART NO TO BE IN FOLLOWING FORM
 CU160-1
 BASIC TMC P/N DASH NO.

SPECIFICATIONS:
 MATERIAL ~ NYLON (MIL-M-20693,
 TYPE 1).
 TEMPERATURE RANGE ~ 65°F TO
 350°F (MELTS OVER
 480°F).
 MIN. TENSILE HOLDING STRENGTH
 50 LBS.
 FUNGUS INSERT ~ SELF
 EXTINGUISHING.
 USE WITH NT137 NUT,
 USE WITH CUI42-2, CUI42-G

REQ. ITEM	PART NO.	DESCRIPTION	SYMBOL
		THE TECHNICAL MATERIEL CORP. MAMARONECK. NEW YORK	
		RETAINER, TY-WRAP	
		NYLON	
		MATERIAL	
		STOCK SIZE	
		HEAT TREAT. SPEC.	
		FINISH & SPEC. NO.	
		NATURAL	
		ELEC. DES. APP.	
		MECH. DES. APP.	
		CHECKED	
		DRAWN	
		FINAL APPROVAL	
		CU160	Ø

REQ. PER UNIT	1	MODEL	CHG-2B	USED ON	CU161
ASSY. NO.		DATE	4-23-65		

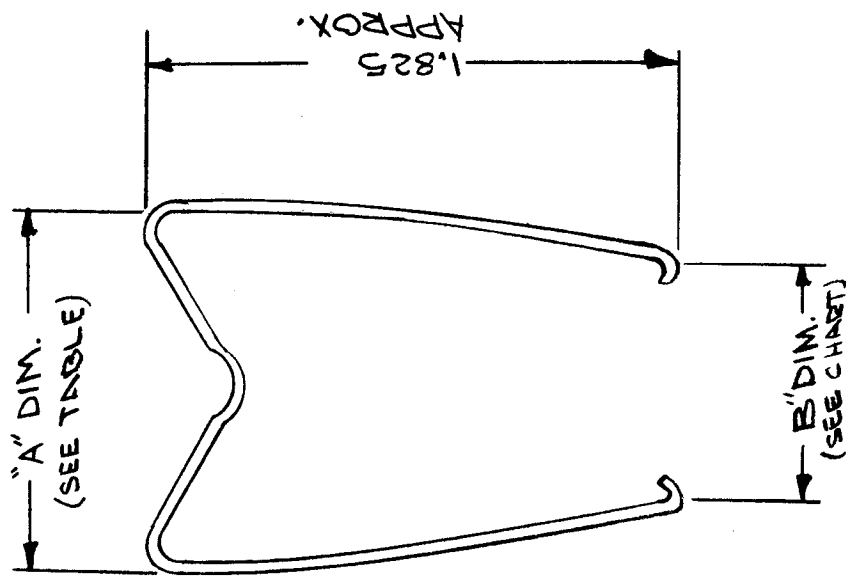


NOTE:
USED FOR CLAMPING OF PL105.

REQ. ITEM	0 POSE	DESCRIPTION	THE TECHNICAL MATERIEL CORP. MAMARONECK, NEW YORK	SYMBOL	CU161
PART NO.					
STOCK SIZE	.015				
MATERIAL	PHOSPHOR BRONZE				
HEAT TREAT. SPEC.					
TYPE & TEMPER	NICKEL PLATED 5-135				
FINISH & SPEC. NO.					
DATE	4-19-65	CH. NO.	0	DRAFTS	2F
SCALE	2:1	CHECKER		ENG. APP.	
DESCRIPTION	ORIGINAL RELEASE FOR PRODUCTION				
UNLESS OTHERWISE SPECIFIED DIMENSIONS ARE IN INCHES AND INCLUDE CHEMICALLY APPLIED OR PLATED FINISHES					
TOLERANCES	DECIMALS				
	.X ± .05				
	.XX ± .01				
	.XXX ± .005				
FRACTIONS					
	± 1/64				
	ANGLES				
	± 0° 30'				
DRAWN	J. Johnson	CHECKED		FINAL APPROVAL	
ELEC. DES. APP.		MECH. DES. APP.			

STANDARD DRAWING

TMC PART NO.	MFG PART NO.	A	B	USED ON	SYMBOL
CU163-1	30040-4	.920 APPROX.	.590 APPROX.	ABS'Y. NO.	CU163
CU163-2	30040-5	1.150 APPROX.	.780 APPROX.	DATE	∅
				10-8-65	
				MODEL	
				KMCU-1	



NOTE:
 USED WITH TS 171
 WHEN MOUNTING
 RL 156 (AC RELAYS)

REQ. PER UNIT	ITEM	PART NO.	DESCRIPTION	SYMBOL
		- 025 DIA	THE TECHNICAL MATERIEL CORP. MAMARONECK. NEW YORK	
			RETAINER	
			COMPONENT ELECT.	
			DRAWN	
			CHECKED	
			FINAL APPROVAL	
			ELEC. DES. APP.	
			MECH. DES. APP.	
			FINISH & SPEC. NO.	
			CU163	∅

SYM	DESCRIPTION	DATE	CH. NO.	DRAFTS	CHECKER	ENG. APP.
∅	ORIGINAL RELEASE	10/18/65				
	UNLESS OTHERWISE SPECIFIED DIMENSIONS ARE IN INCHES AND INCLUDE CHEMICALLY APPLIED OR PLATED FINISHES	SCALE	1:1			
	DECIMALS					
	.X ± .05					
	.XX ± .01					
	.XXX ± .005					
	TOLERANCES	FRACTIONS	± 1/64			
		ANGLES	± 0° 30'			
		CODE	S401-227			

NOTICE TO PERSONS RECEIVING THIS DRAWING
 THE TECHNICAL MATERIEL CORPORATION claims proprietary right in the material disclosed hereon. This drawing is issued in confidence for engineering information only and may not be reproduced or used to manufacture anything shown hereon without permission from THE TECHNICAL MATERIEL CORPORATION to the user. This drawing is loaned for mutual assistance and is subject to recall at any time.

SCALE NONE
 SIZE A
 CODE IDENT. NO. 82679
 DWG. NO. CU 167
 SHEET OF

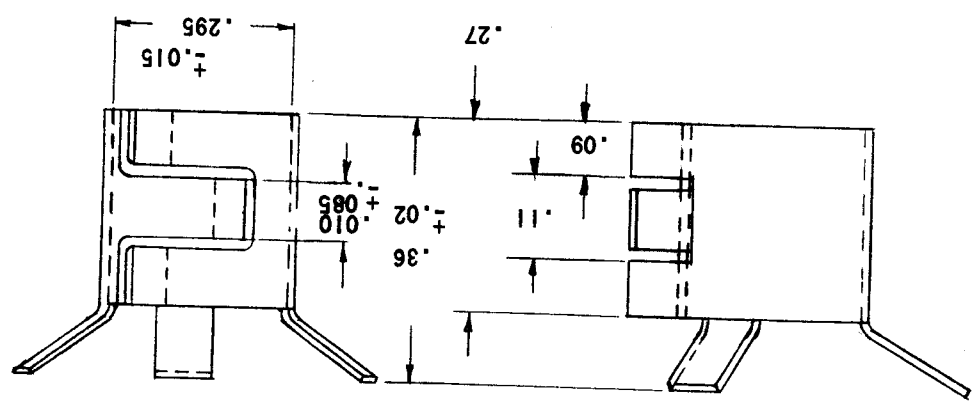
S401-153		DRAWN	DATE	RETAINER, DATA LAMP
FINISH		CHECKED	DATE	
MATERIAL		ELECT. DES.	DATE	
DECIMALS X ± .05 XX ± .01 XXX ± .005		MECH. DES.	DATE	
FRACTIONS 1/64 TOLS. ANGLES 0° 30'		FINAL APPROVAL	DATE	THE TECHNICAL MATERIEL CORP. MAMARONECK, NEW YORK

UNLESS OTHERWISE SPECIFIED DIMENSIONS ARE IN INCHES AND INCLUDE CHEMICALLY APPLIED OR PLATED FINISHES

REQ'D	ITEM	PART NUMBER	DESCRIPTION	SYM.
LIST OF MATERIAL				

REF: FOR USE WITH DATA LAMP: TMC P/N B119
 FOR USE WITH SOCKET: TMC P/N TS193

MFR (TMC CODE NO.): S401-153
 MFR CATALOG NUMBER: 515-0051



APPLICATION		REVISONS							
QTY	MODEL USED ON	ASSY NO.	LTR	DESCRIPTION	DATE	E.M.N.NO	DRAFT	CHKD	APPD
	RIH-3		X	EXPERIMENTAL RELEASE	10/24/68			C.V.	
			Ø	ORIG. RELEASE FOR PROD.	10/24/68			R.G.	

NOTICE TO PERSONS RECEIVING THIS DRAWING
 THE TECHNICAL MATERIEL CORPORATION claims proprietary right in the material disclosed hereon. This drawing is issued in confidence for engineering information only and may not be reproduced or used to manufacture anything shown hereon without permission from THE TECHNICAL MATERIEL CORPORATION to the user. This drawing is loaned for mutual assistance and is subject to recall at any time.

SCALE: A
 CODE IDENT. NO.: 82679
 DWG NO.: CU170
 SHEET: _____ OF _____
 ISSUE:

DRAWN		DATE: 2/25/72	
CHECKED		DATE: 2/25/72	
ELECT. DES.		DATE: 2/25/72	
MECH. DES.		DATE: 2/25/72	
FINAL APPROVAL		DATE: 2/25/72	

MATERIAL: _____
 FINISH: _____

UNLESS OTHERWISE SPECIFIED DIMENSIONS ARE IN INCHES AND INCLUDE CHEMICALLY APPLIED OR PLATED FINISHES
 DECIMALS: X ± .05
 FRACTIONS: 1/64
 TOLS: .01
 ANGLES: .005
 .XX ± .005
 .XXX ± .005

REQ'D	ITEM	PART NUMBER	DESCRIPTION	SYM.
LIST OF MATERIAL				
THE TECHNICAL MATERIEL CORP. MAMARONECK, NEW YORK				
CLAMP COIL TAP				

CLAMP COIL TAP
 5401-47
 MFG P/N 235-0804-001

APPLICATION				REVISIONS			
QTY	MODEL USED ON	ASS'Y NO.	LTR	DESCRIPTION	DATE	E.M.N.NO.	DRAFT
16	HAT-5	BHA475	<input checked="" type="checkbox"/>	ORIG RELEASE FOR PROD	2/17/72		<input checked="" type="checkbox"/>
6	HAT-10						
APPD	CHKD						

NOTICE TO PERSONS RECEIVING THIS DRAWING
 THE TECHNICAL MATERIEL CORPORATION claims proprietary right in the material
 disclosed hereon. This drawing is issued in confidence for engineering information only
 and may not be reproduced or used to manufacture anything shown hereon without
 permission from THE TECHNICAL MATERIEL CORPORATION to the user. This drawing is
 loaned for mutual assistance and is subject to recall at any time.

SCALE NTS
 SHEET OF
 SIZE A
 CODE IDENT. NO. 82679
 DWG. NO. CUI171
 ISSUE

FINISH	DRAWN	GE	DATE	12/19/78
	CHECKED		DATE	
MATERIAL	ELECT. DES.		DATE	
	MECH. DES.		DATE	
DECIMALS X ± .05 XX ± .01 XXX ± .005	FINAL APPROVAL	<i>[Signature]</i>	DATE	
	OR PLATED FINISHES AND INCLUDE CHEMICALLY APPLIED			
UNLESS OTHERWISE SPECIFIED DIMENSIONS ARE IN INCHES OR PLATED FINISHES				
REQ'D ITEM	PART NUMBER	DESCRIPTION	SYM.	

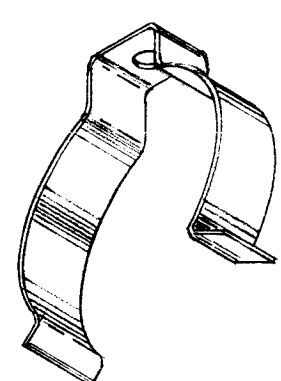
COMPONENT HOLDER

THE TECHNICAL MATERIEL CORP.
 MAMARONECK, NEW YORK

LIST OF MATERIAL

O. POSE

REF: S401-128



CAT. NO	78
MIN.-MAX DIA OR SIZE	1.87 TO 1.350
MATERIAL	.020 STEEL

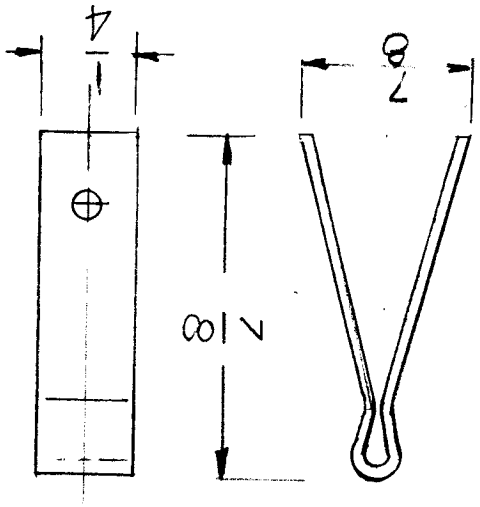
QTY	MODEL USED ON	ASS'Y NO.	LTR	DESCRIPTION	DATE	E.M.N. NO.	DRAFT	CHKD	APPD
				ORIG. RELEASE FOR PROD.	12/19/78		CT		
APPLICATION					REVISIONS				

NOTICE TO PERSONS RECEIVING THIS DRAWING
 THE TECHNICAL MATERIEL CORPORATION claims proprietary right in the material disclosed hereon. This drawing is issued in confidence for engineering information only and may not be reproduced or used to manufacture anything shown hereon without permission from THE TECHNICAL MATERIEL CORPORATION to the user. This drawing is loaned for mutual assistance and is subject to recall at any time.

SCALE 2:1
 SHEET OF
 SIZE A
 CODE IDENT. NO. 82679
 DWG NO. CU 172
 ISSUE

FINISH		DRAWN G.D.L.		DATE 11-5-74	
MATERIAL		CHECKED		DATE	
UNLESS OTHERWISE SPECIFIED DIMENSIONS ARE IN INCHES AND INCLUDE CHEMICALLY APPLIED OR PLATED FINISHES		ELECT. DES.		DATE	
DECIMALS X ± .05 XX ± .01 XXX ± .005		MECH. DES.		DATE	
FRACTIONS 1/64 ANGLES 0°-30'		FINAL APPROVAL		DATE 11-5-74	
LIST OF MATERIAL					
REQ'D	ITEM	PART NUMBER	DESCRIPTION	SYM.	

REF: B & W NO 3942
 BAKER, WILLIAMS # 3942



APPLICATION		REVISIONS							
QTY	MODEL USED ON	ASS'Y NO.	LTR	DESCRIPTION	DATE	E.M.N.NO	DRAFT	CHKD	APPD
1	ATSA-3	?	X	EXP. RELEASE	8/76	#	CL		*
			0	ORIGINAL RELEASE FOR PROD					

NOTICE TO PERSONS RECEIVING THIS DRAWING
 THE TECHNICAL MATERIEL CORPORATION claims proprietary right in the material disclosed hereon. This drawing is issued in confidence for engineering information only and may not be reproduced or used to manufacture anything shown hereon without permission from THE TECHNICAL MATERIEL CORPORATION to the user. This drawing is loaned for mutual assistance and is subject to recall at any time.

SCALE 1:1
 SIZE A
 CODE IDENT. NO. 82679
 DWG NO. CU173
 SHEET OF

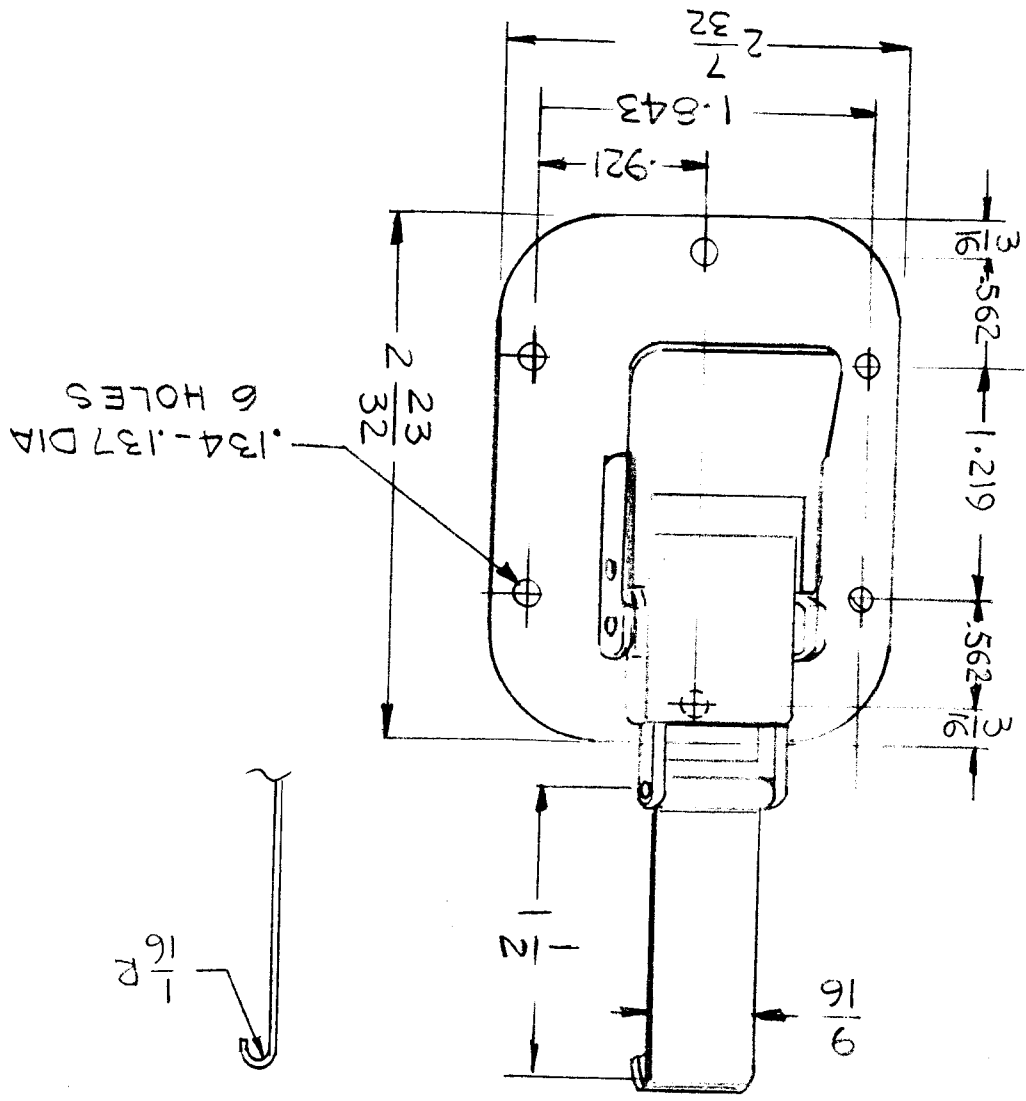
FINISH	DATE	DRAWN G.D.L.
MATERIAL	DATE	CHECKED
MECH. DES.	DATE	ELECT. DES.
FINAL APPROVAL	DATE	MACH. DES.
DECIMALS X ± .05 XX ± .01 XXX ± .005	DATE	DATE
FRACTIONS 1/64 TOLS. ANGLES	DATE	DATE
OR PLATED FINISHES AND INCLUDE CHEMICALLY APPLIED	DATE	DATE
UNLESS OTHERWISE SPECIFIED DIMENSIONS ARE IN INCHES	DATE	DATE

CLAMP, CASE
 THE TECHNICAL MATERIEL CORP.
 MAMARONECK, NEW YORK

LIST OF MATERIAL

REQ'D	ITEM	PART NUMBER	DESCRIPTION	SYM.

REF - NIELSEN H/WARE NO. SC-B-83314-6



APPLICATION		REVISIONS				
QTY	MODEL USED ON	ASSY. NO.	LTR	DESCRIPTION	DATE	E.M.N.O.
4	CW108			EXP. RELEASE	1-12-77	

NOTICE TO PERSONS RECEIVING THIS DRAWING
 THE TECHNICAL MATERIEL CORPORATION claims proprietary right in the material disclosed hereon. This drawing is issued in confidence for engineering information only and may not be reproduced or used to manufacture anything shown hereon without permission from THE TECHNICAL MATERIEL CORPORATION to the user. This drawing is loaned for mutual assistance and is subject to recall at any time.

SCALE 1:1
 SHEET OF
 SIZE A
 CODE IDENT. NO. 82679
 DWG NO. CU 174
 ISSUE \emptyset

FINISH		DRAWN G.D.L. DATE 3-19-76	
MATERIAL		CHECKED DATE	
DECIMALS X ± .05 XX ± .01 XXX ± .005		ELECT. DES. DATE	
FRACTIONS 1/64 TOLS. ANGLES 0°-30'		MECH. DES. DATE	
OR PLATED FINISHES AND INCLUDE CHEMICALLY APPLIED		FINAL APPROVAL DATE 8-12-76	

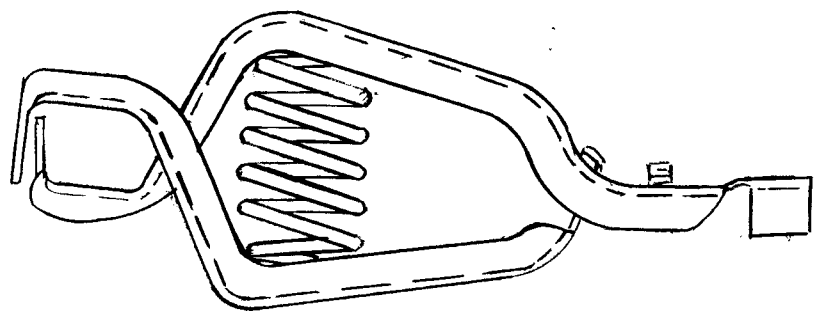
UNLESS OTHERWISE SPECIFIED
 DIMENSIONS ARE IN INCHES
 LIST OF MATERIAL

REQ'D	ITEM	PAR	NUMBER	DESCRIPTION	SYM.
-------	------	-----	--------	-------------	------

CLIP, ELECTRICAL

THE TECHNICAL MATERIEL CORP.
 MAMARONECK, NEW YORK

MFG. BELDEN # 7563-10



APPLICATION		REVISIONS	
QTY	MODEL USED ON	ASSY NO.	LTR
1	TM 125	CA130	\emptyset
DESCRIPTION		DATE	E.M.N.NO
ORIGINAL RELEASE FOR PROD		8/76	CL
APPD	CHKD	DRAFT	CL

NOTICE TO PERSONS RECEIVING THIS DRAWING
 THE TECHNICAL MATERIEL CORPORATION claims proprietary right in the material
 disclosed hereon. This drawing is issued in confidence for engineering information only
 and may not be reproduced or used to manufacture anything shown hereon without
 permission from THE TECHNICAL MATERIEL CORPORATION to the user. This drawing is
 loaned for mutual assistance and is subject to recall at any time.

SCALE 1:1
 SHEET OF
 SIZE A
 CODE IDENT. NO. 82679
 DWG NO. CU 175
 ISSUE X

FINISH		DRAWN G.D.L.	DATE
MATERIAL STAINLESS		CHECKED	DATE
		ELECT. DES.	DATE
		MECH. DES.	DATE
		FINAL APPROVAL	DATE

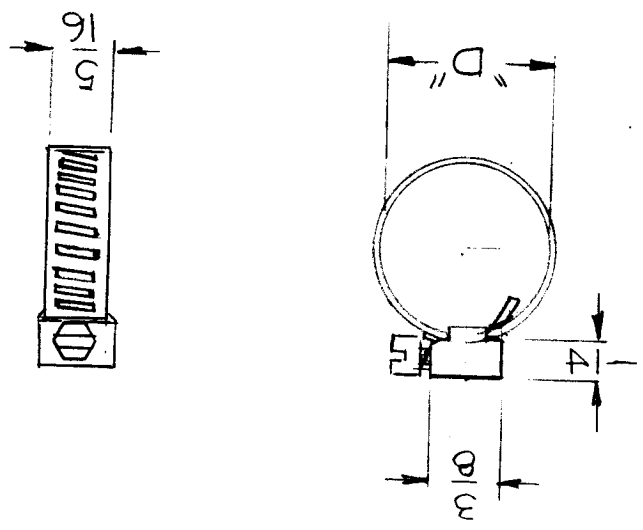
UNLESS OTHERWISE SPECIFIED DIMENSIONS ARE IN INCHES AND INCLUDE CHEMICALLY APPLIED OR PLATED FINISHES	DECIMALS X ± .05 TOLS. 1/64	FRACTIONS XX ± .005 ANGLES OF .30°
--	-----------------------------------	---

REQ'D ITEM	PART NUMBER	DESCRIPTION	SYM.
------------	-------------	-------------	------

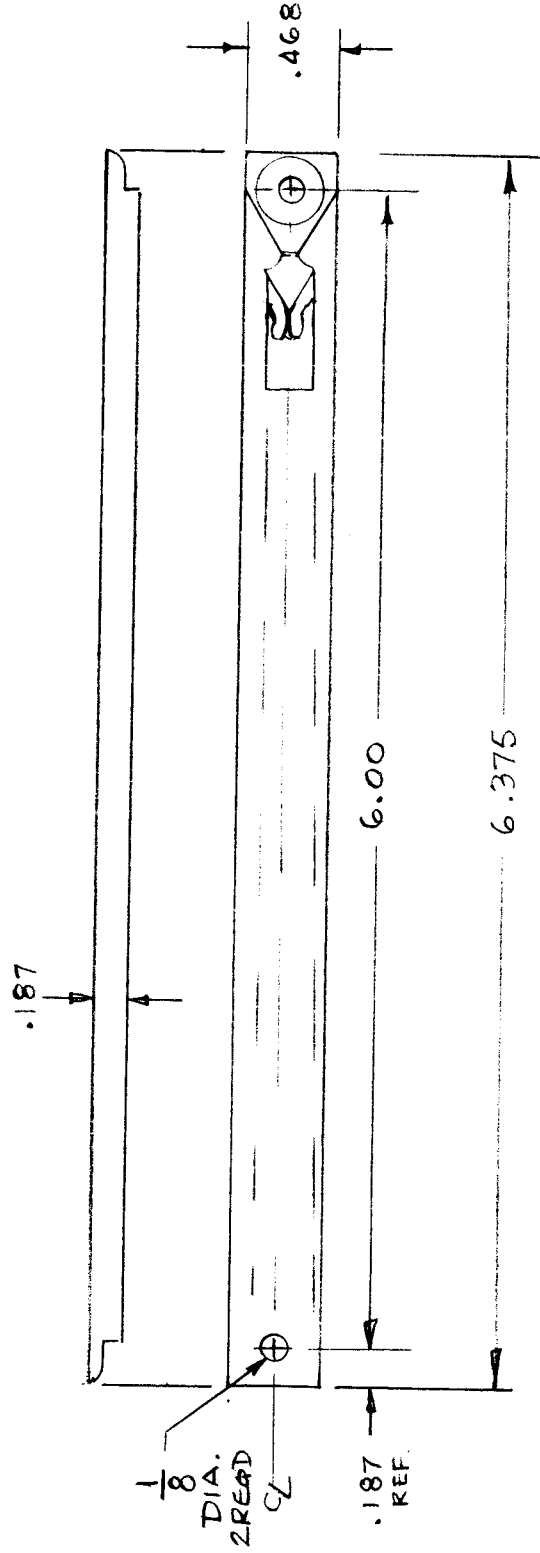
LIST OF MATERIAL

MFG. IDEAL NO. 6203

NOTE:
 EFFECTIVE RANGE OF CLAMP DIA. "D"
 11/16 MIN.
 7/8 MAX.



APPLICATION		REVISIONS							
QTY	MODEL USED ON	ASS'Y. NO.	LTR	DESCRIPTION	DATE	E.M.N. NO.	DRAFT	CHKD	APPD
1	HFA-10K								
1	KIT 407								



3401-532 WEL 6375		GUIDE, R.C. BD.	
UNIT	ASSY	QTY	
DPC10	BMA546	6	
			CU176
			X

NOTICE TO PERSONS RECEIVING THIS DRAWING
 THE TECHNICAL MATERIEL CORPORATION claims proprietary right in the material
 disclosed hereon. This drawing is issued in confidence for engineering information only
 and may not be reproduced or used to manufacture anything shown hereon without
 permission from THE TECHNICAL MATERIEL CORPORATION to the user. This drawing is
 loaned for mutual assistance and is subject to recall at any time.

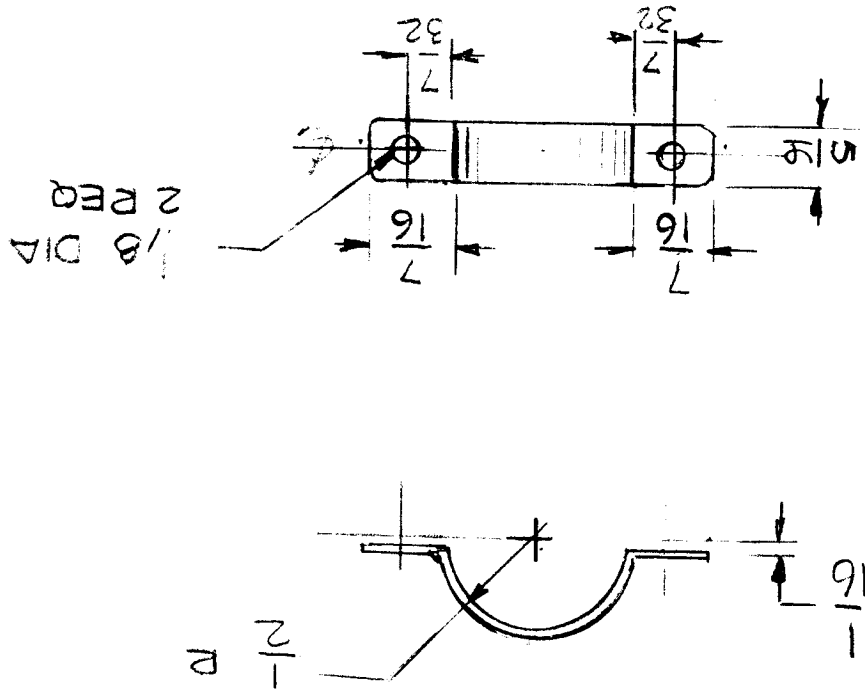
SCALE 1:1
 SIZE A
 CODE IDENT. NO. 82679
 DWG NO. CU177
 SHEET OF

DATE 8-9-78	DRAWN G.D.L.
DATE	CHECKED
DATE	ELECT. DES.
DATE	MECH. DES.
DATE 11-2-78	FINAL APPROVAL

FINISH TIN PLATED
 MATERIAL 0.20 THK COPPER
 DECENTALS
 .XX ± .01 TOLS.
 .X ± .05 ANGLES
 1/64 ± .30
 OR PLATED FINISHES
 AND INCLUDE CHEMICALLY APPLIED
 DIMENSIONS ARE IN INCHES
 UNLESS OTHERWISE SPECIFIED

REQ'D ITEM	PART NUMBER	DESCRIPTION	SYM.
------------	-------------	-------------	------

LIST OF MATERIAL



APPLICATION		REVISIONS							
QTY	MODEL USED ON	ASS'Y NO.	LTR	DESCRIPTION	DATE	E.M.N. NO.	DRAFT	CHKD	APPD
2	CU-2B	A5775	Ø	ORIGINAL RELEASE	11-6-79	MJC			

NOTICE TO PERSONS RECEIVING THIS DRAWING
 THE TECHNICAL MATERIEL CORPORATION claims proprietary right in the material disclosed hereon. This drawing is issued in confidence for engineering information only and may not be reproduced or used to manufacture anything shown hereon without permission from THE TECHNICAL MATERIEL CORPORATION to the user. This drawing is loaned for mutual assistance and is subject to recall at any time.

SCALE OF SHEET

SIZE A

CODE IDENT. NO. 82679

DWG NO. CU 178

ISSUE \emptyset

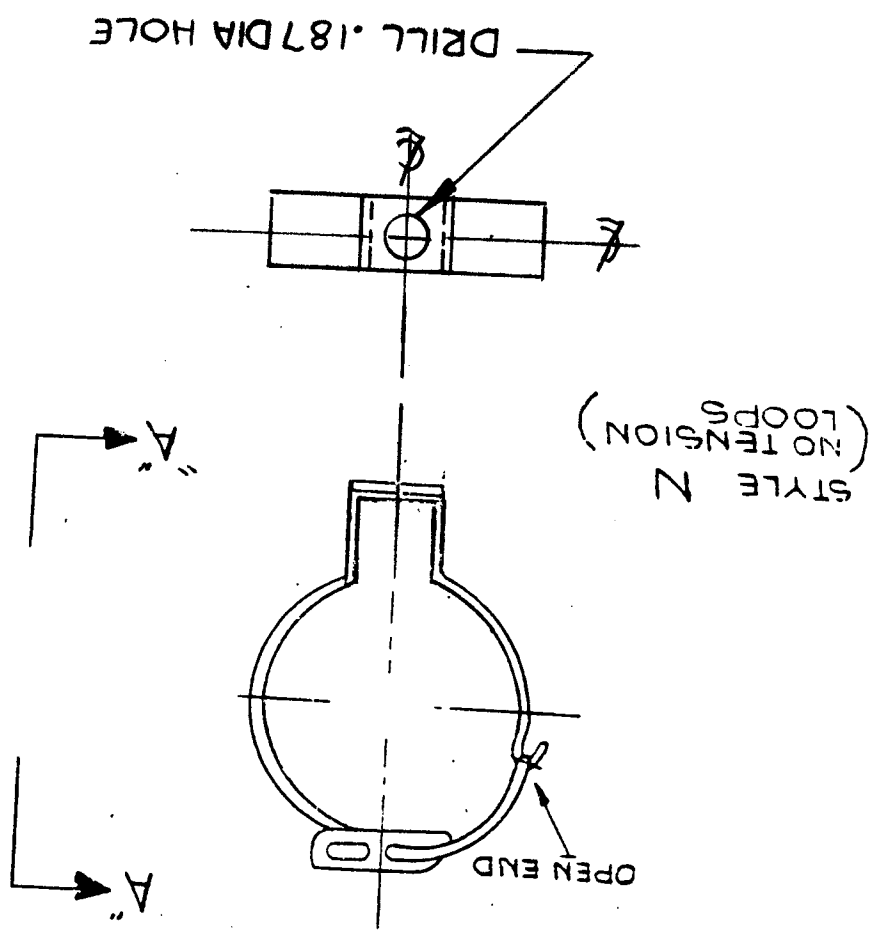
FINISH	
MATERIAL	
MECH. DES.	DATE
ELECT. DES.	DATE
CHECKED	DATE
DRAWN	DATE 7-28-82

RETAINER, CLIP

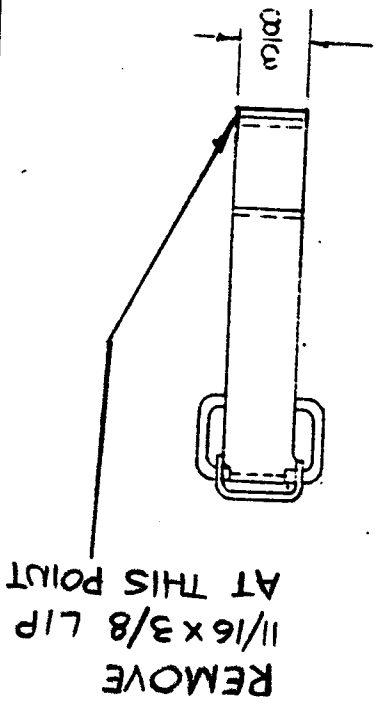
THE TECHNICAL MATERIEL CORP.
 MAMARONECK, NEW YORK

QTY	MODEL USED ON	ASS'Y NO.	LTR	DESCRIPTION	DATE	E.M.N. NO.	DRAFT	CHKD	APPD
4	RR138-300	TER 500	\emptyset	ORIGINAL RELEASE	7-27-82	~			

NOTE: MODIFY CUI50-1 AS SHOWN



END VIEW "A-A"



APPLICATION									
REVISIONS									

NOTICE TO PERSONS RECEIVING THIS DRAWING
THE TECHNICAL MATERIEL CORPORATION claims proprietary right in the material disclosed hereon. This drawing is issued in confidence for engineering information only and may not be reproduced or used to manufacture anything shown hereon without permission from THE TECHNICAL MATERIEL CORPORATION to the user. This drawing is loaned for mutual assistance and is subject to recall at any time.

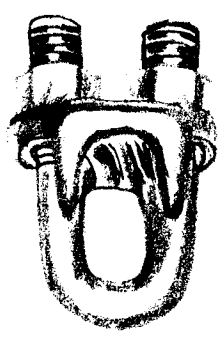
SCALE	—
SIZE	A
CODE IDENT. NO.	82679
DWG NO.	CU 179
SHEET	OF
ISSUE	φ

FINISH	GALVANIZED
MATERIAL	FORGET STEEL
MECH. DES.	DATE
ELECT. DES.	DATE
CHECKED	DATE
DRAWN	G.D.L. DATE 6-5-90
FINAL APPROV.	DATE
UNLESS OTHERWISE SPECIFIED DIMENSIONS ARE IN INCHES AND INCLUDE CHEMICALLY APPLIED OR PLATED FINISHES	
DECIMALS FRACTIONS	
X ± .05 1/64	
XX ± .01 TOLS.	
XXX ± .005 ANGLES	
90° 30'	
RECD. ITEM	PART NUMBER
DESCRIPTION	SYM.
LIST OF MATERIAL	

WIRE ROPE CLAMPS

THE TECHNICAL MATERIEL CORP.
MAMARONECK, NEW YORK

REF: MC MASTER-CARR
U-BOLT WIRE CLIPS
MFG NO 3465 T13 (PAGE: 538)



QTY	3	MODEL USED ON	DAC-8	ASS'Y NO.	φ	DESCRIPTION	ORIG. RELEASE FOR PRODUCTION 2-19-91	DATE	E.M.N. NO.	DRAFT	CHKD	APPD
APPLICATION												
REVISIONS												

T.M.C. NO.	CAT. NO.	WILL FIT K.O. INCHES	WILL HOLD BY LEADED FLEXION INCHES	MIN I.D. DIA INCHES	MAX I.D. DIA INCHES
CU10001-1	300V	1/2"	3/8"	0.437	0.656
			14/12		
			14/13		
			14/14		
			12/12		
			10/12		
			10/13		

4110-6-22

CU10001

STANDARD DRAWING

LOCKNUT GALVANIZED

NOTICE TO PERSONS RECEIVING THIS DRAWING

THE TECHNICAL MATERIEL CORPORATION claims proprietary right in the material disclosed hereon. This drawing is issued in confidence for engineering information only and may not be reproduced or used to manufacture anything shown hereon without permission from THE TECHNICAL MATERIEL CORPORATION to the user. This drawing is loaned for mutual assistance and is subject to recall at any time.

Property of:

THE TECHNICAL MATERIEL CORPORATION
MAMARONECK, NEW YORK

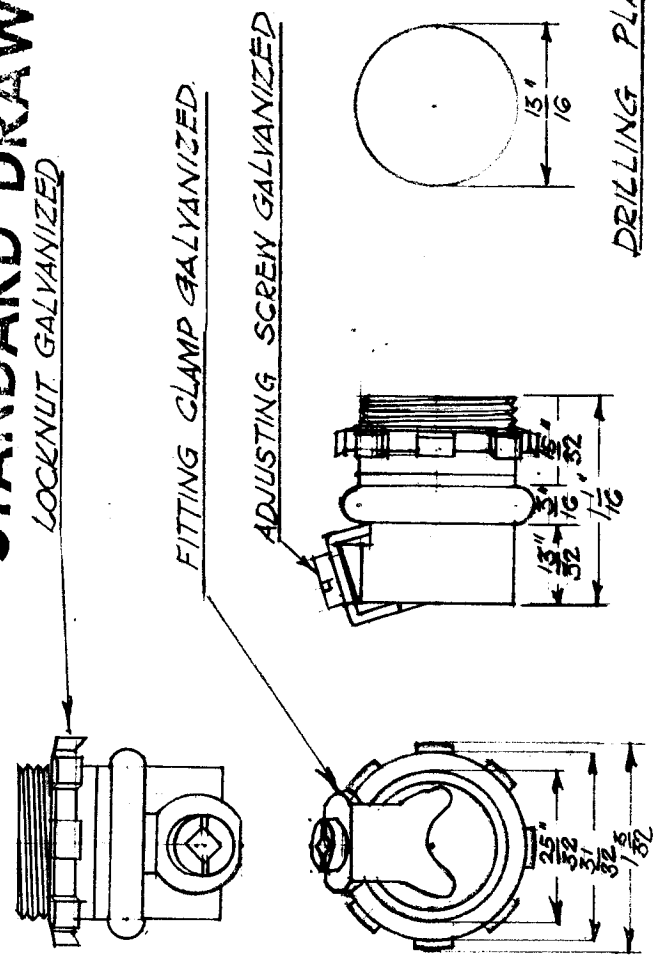
BODY MATERIAL: GALVANIZED STEEL

NOTICE TO PERSONS RECEIVING THIS DRAWING

THE TECHNICAL MATERIEL CORPORATION claims proprietary right in the material disclosed hereon. This drawing is issued in confidence for engineering information only and may not be reproduced or used to manufacture anything shown hereon without permission from THE TECHNICAL MATERIEL CORPORATION to the user. This drawing is loaned for mutual assistance and is subject to recall at any time.

Property of:

THE TECHNICAL MATERIEL CORPORATION
MAMARONECK, NEW YORK



DRILLING PLAN.

DIMENSIONS FOR REFERENCE ONLY
REF. CANADIAN GENERAL ELECTRIC COMPANY LTD.

STOCK SIZE	T.M.C. (Canada) LTD. OTTAWA ONTARIO		
MATERIAL	FITTING CONDUIT		
TYPE & TEMPER	12H. 8-12-52	ELEC. DES. APP.	MECH. DES. APP.
HEAT TREAT SPEC	DRAWN Zuk	CHANGED	FINAL APPROVAL 10/22
FINISH & SPECS. NO.	CU-10001		

FULL SCALE

IF IT IS FOUND DESIRABLE TO CHANGE ANY TOLERANCE OR OTHER DETAIL SPECIFIED ON THIS DRAWING NOTIFY THE PURCHASER PROMPTLY.

MAXIMUM ALLOWABLE TOLERANCES HAVE BEEN DETERMINED AND DEVIATIONS WILL BE CAUSE FOR REJECTION. REMOVE ALL BURRS AND SHARP EDGES

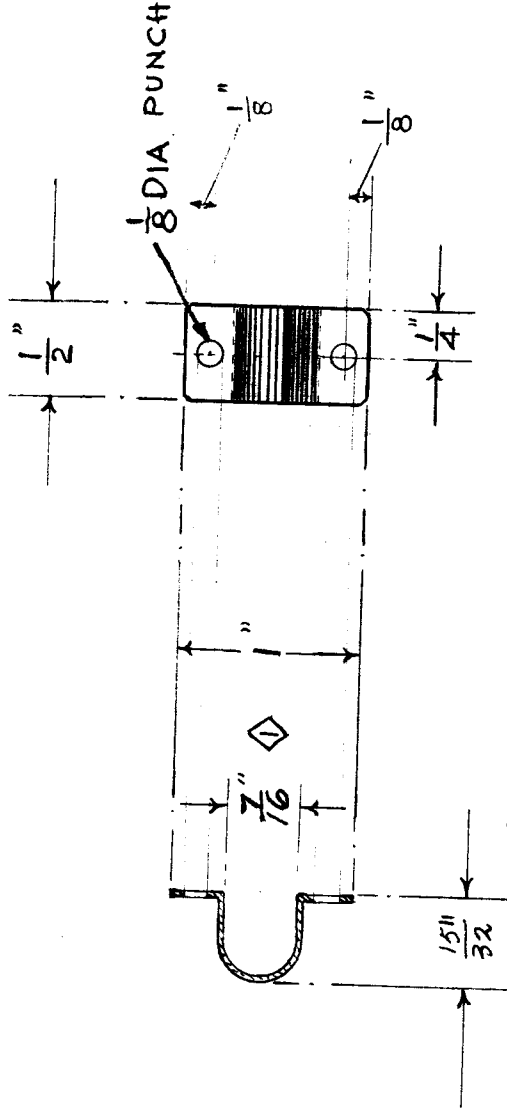
CU-10003

USED ON

MODEL PROJECT NO. ASSY. NO. DATE

AMC-6-2

9/6/55

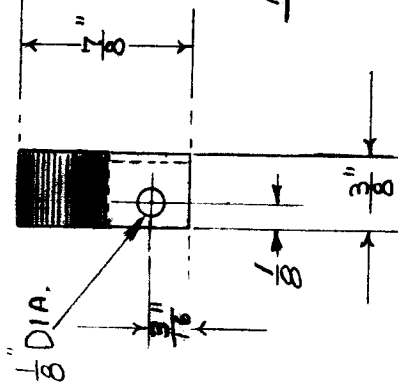
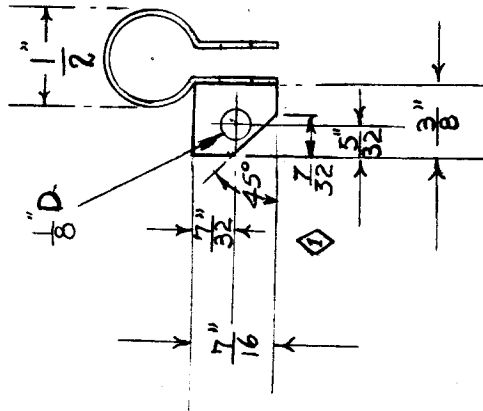


REQ. ITEM	PART NO.	DESCRIPTION	SYMBOL
1/2 x 1/2		TMC (Canada) LIMITED OTTAWA ONTARIO	
AL4-57 1/2 hard	0.032	CLAMP - CABLE	
MATERIAL	WEIGHT PER PC.		
TYPE & TEMPER			
HEAT TREAT. SPEC.			
FINISH & SPEC. NO.			
		DRAWN E.A.C.	ELEC. DES. APP. MECH. DES. APP.
		CHECKED	FINAL APPROVAL
			CU-10003 A

ISSUE ITEM	CHANGED FROM	DATE	CN. NO.	DRAFTS CHECKER	ENG. APP.
1 A	7/8 WAS 3/8	29/8/57	88	L.M.	M.Y.
TOLERANCES					
DEC. DIM. ±	SCALE				
FRAC. DIM. ± 1/64	DRILL, PUNCH, COMMERCIAL STOCK SIZES AND MANUFACTURERS TOLERANCES ARE NOT INCLUDED.				
ANGULAR DIM. ±					

IF IT IS FOUND DESIRABLE TO CHANGE ANY TOLERANCE OR OTHER DETAIL SPECIFIED ON THIS DRAWING NOTIFY THE PURCHASER PROMPTLY.

MAXIMUM ALLOWABLE TOLERANCES HAVE BEEN DETERMINED AND DEVIATIONS WILL BE CAUSE FOR REJECTION. REMOVE ALL BURRS AND SHARP EDGES



NOTE: HOLES TO CLEAR 4-40

AMC-6-2
AMC-6-3

9/6/55

CU-10004A

MODEL PROJECT NO. ASS'Y. NO. DATE

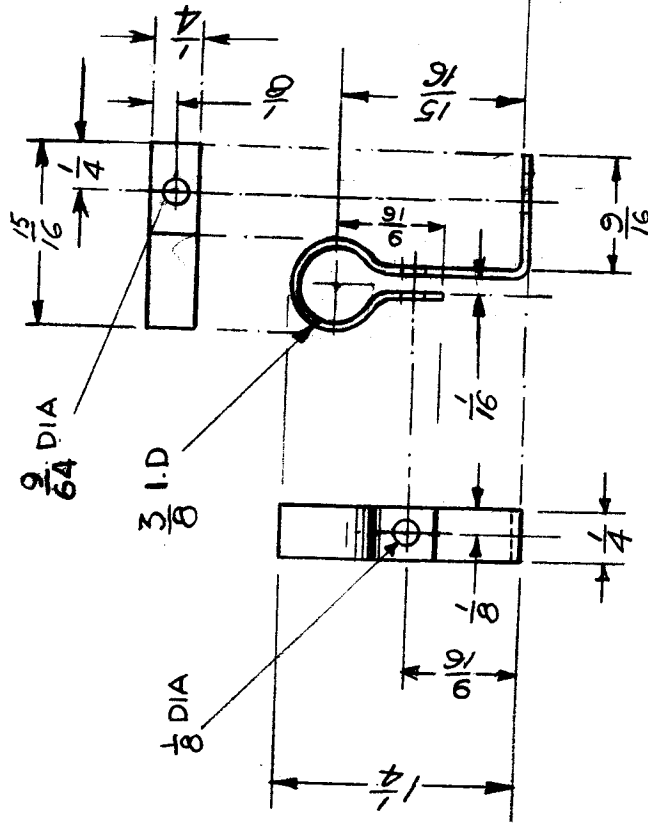
USED ON

B 2	1/8" DIA WAS ADDED	28/3/67	LLM	MLJ
A 1	45° ANGLE ADDED	9/23/55	LLM	W.P.
ISSUE ITEM	CHANGED FROM	DATE	CN. NO.	DRAFTS/CHECKER/ENG. APP.
TOLERANCES				
ALL OTHERS	DEC. DIM. ± 1/64"	DRILL, PUNCH, COMMERCIAL STOCK SIZES AND MANUFACTURERS TOLERANCES ARE NOT INCLUDED.		
	ANGULAR DIM. ±			

REQ. ITEM	PART NO.	DESCRIPTION	SYMBOL
3 X 2"		TMC (Canada) LIMITED OTTAWA	
AL457 1/2 hard	0-032	CLAMP - CABLE	
MATERIAL	WEIGHT PER PC.		
TYPE & TEMPER			
HEAT TREAT. SPEC.			
TMC SPECS 5101 & 5107			
FINISH & SPEC. NO.			
		DRAWN E.A.C.	MECH. DES. APP.
		CHECKED M.J.	FINAL APPROVAL 1-20-C
			CU-10004B

IF IT IS FOUND DESIRABLE TO CHANGE ANY TOLERANCE OR OTHER DETAIL SPECIFIED ON THIS DRAWING NOTIFY THE PURCHASER PROMPTLY.

MAXIMUM ALLOWABLE TOLERANCES HAVE BEEN DETERMINED AND DEVIATIONS WILL BE CAUSE FOR REJECTION. REMOVE ALL BURRS AND SHARP EDGES



2 REQ'D PER UNIT

CU-10005

MODEL	PROJECT NO.	ASS'Y. NO.	DATE
AMC6-2 AMC6-3		A-10072	23-6-55

USED ON

NOTICE TO PERSONS RECEIVING THIS DRAWING

THE TECHNICAL MATERIEL CORPORATION claims proprietary right in the material disclosed hereon. This drawing is issued in confidence for engineering information only and may not be reproduced or used to manufacture anything shown hereon without permission from THE TECHNICAL MATERIEL CORPORATION to the user. This drawing is loaned for mutual assistance and is subject to recall at any time.

Property of:

THE TECHNICAL MATERIEL CORPORATION
MAMARONECK, NEW YORK

ISSUE ITEM	CHANGED FROM	DATE	CN. NO.	DRAFTS	CHECKER	ENG. APP.
ALL OTHERS						

TOLERANCES

DEC. DIM. ± 1/64
FRAC. DIM. ± 1/64
ANGULAR DIM. ±

DRILL, PUNCH, COMMERCIAL STOCK SIZES AND MANUFACTURERS TOLERANCES ARE NOT INCLUDED.

REQ. ITEM	PART NO.	DESCRIPTION	SYMBOL
		TMC (Canada) LIMITED OTTAWA ONTARIO	
		CLAMP	
		AMC 6-2 & 3	
		EWBG	
		DRAWN	ELEC. DES. APP. MECH. DES. APP.
		CHECKED	FINAL APPROVAL
			CU-10005

STOCK SIZE	ALUM. .32
MATERIAL	W3000-PC
TYPE & TEMPER	11
HEAT TREAT. SPEC.	11
FINISH & SPEC. NO.	T.M.C. SPECS. 9001 & 5107

STANDARD DRAWING

IF IT IS FOUND DESIRABLE TO CHANGE ANY TOLERANCE OR OTHER DETAIL SPECIFIED ON THIS DRAWING NOTIFY THE PURCHASER PROMPTLY.

MAXIMUM ALLOWABLE TOLERANCES HAVE BEEN DETERMINED AND DEVIATIONS WILL BE CAUSE FOR REJECTION. REMOVE ALL BURRS AND SHARP EDGES

USED ON

MODEL

PROJECT NO.

ASS'Y. NO.

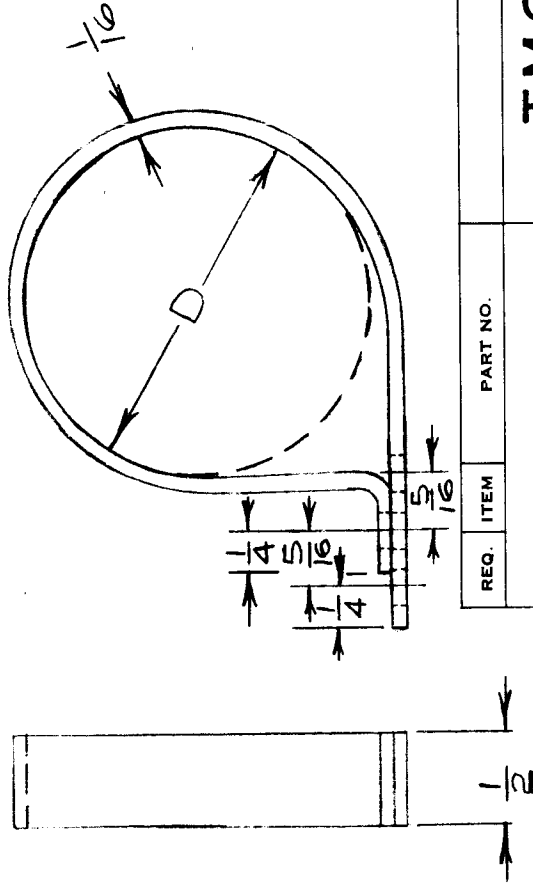
DATE

CU10010

6/24/60

TMC. PT. NO.	MFR. PT. NO.	DIM. D.
CU10010-1	HP-32	1-3/4

HOLES - 3/16 DIA - 4 REQ.



NOTE: OPERATING TEMPERATURES FROM 60°F. TO 300°F.

REQ. ITEM	PART NO.	DESCRIPTION	SYMBOL
		TMC (Canada) LIMITED OTTAWA ONTARIO	
		CLAMP, CABLE.	
STOCK SIZE			
MATERIAL			
TYPE & TEMPER		JPC	
HEAT TREAT. SPEC.			
FINISH & SPEC. NO.			CU10010
ISSUE	ITEM	CHANGED FROM	DATE
TOLERANCES			
DEC. DIM. ±			
FRAC. DIM. ±			
ANGULAR DIM. ±			
DIMENSIONS IN INCHES UNLESS OTHERWISE SPECIFIED			
DRILL, PUNCH, COMMERCIAL STOCK SIZES AND MANUFACTURERS TOLERANCES ARE NOT INCLUDED.			
CN. NO.		DRAFTS CHECKER	ENG. APP.
S-10045-14			
ELEC. RES. APP.		MECH. DES. APP.	
DRAWN		R. Williams	
CHECKED		K. G. E.	
FINAL APPROVAL			

STANDARD DRAWING

CU-10011 A

IF IT IS FOUND DESIRABLE TO CHANGE ANY TOLERANCE OR OTHER DETAIL SPECIFIED ON THIS DRAWING NOTIFY THE PURCHASER PROMPTLY.

MAXIMUM ALLOWABLE TOLERANCES HAVE BEEN DETERMINED AND DEVIATIONS WILL BE CAUSE FOR REJECTION. REMOVE ALL BURRS AND SHARP EDGES

USED ON

DATE

ASS'Y. NO.

PROJECT NO.

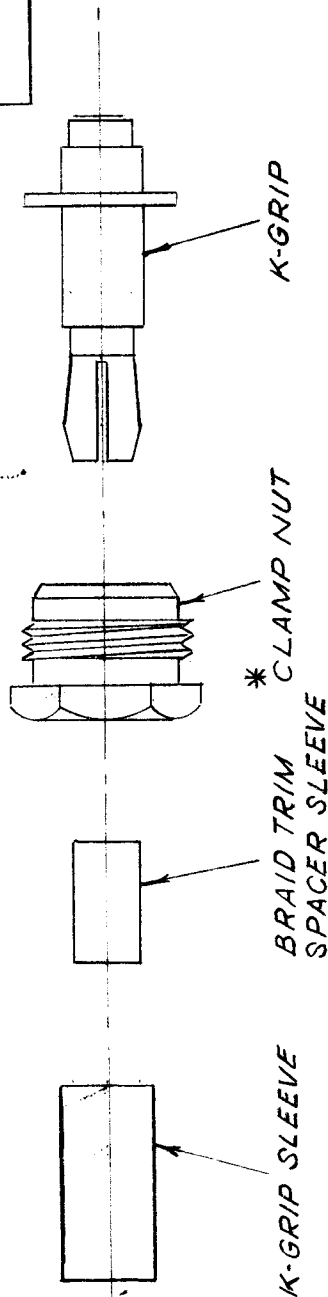
MODEL

6 JAN 1961

OBSOLETE

NO LONGER USED

12-19-62 *W.D.*



* NOT SUPPLIED

USED ON:

RG-59
59A
59B
62
62A/U

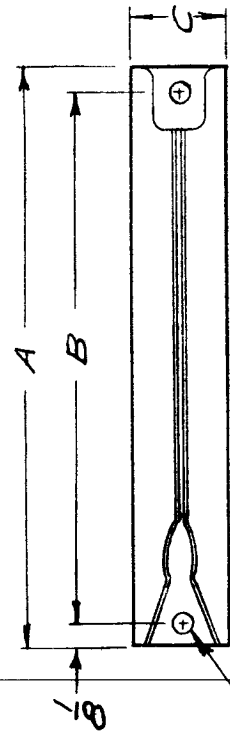
MGR. No KS-89-14

REQ. ITEM	PART NO.	DESCRIPTION	SYMBOL
		TMC (Canada) LIMITED OTTAWA	
	STOCK SIZE	K-GRIP ASS'Y	
	MATERIAL		
	WEIGHT PER PC.		
	TYPE & TEMPER	W.H. DAVISON	
		DRAWN <i>W.H. DAVISON</i>	ELEC. DES. APP. <i>M. W.</i>
		CHECKED <i>W.D.</i>	MECH. DES. APP.
	HEAT TREAT. SPEC.		FINAL APPROVAL
	FINISH & SPEC. NO.	CU-10011	A

ISSUE	ITEM	CHANGED FROM	DATE	CN. NO.	DRAFTS	CHECKER	ENG. APP.
A 1		NO LONGER USED	12-19-62	7898	<i>W.D.</i>	<i>W.D.</i>	<i>W.D.</i>
TOLERANCES							
SCALE							
DIMENSIONS IN INCHES							
UNLESS OTHERWISE SPECIFIED							
DRILL, PUNCH, COMMERCIAL STOCK							
SIZES AND MANUFACTURERS							
TOLERANCES ARE NOT INCLUDED.							
ALL OTHERS	DEC. DIM. ±	—					
	FRAC. DIM. ±	—					
	ANGULAR DIM. ±	—					

ISSUE	ITEM	CHANGED FROM	DATE	CN. NO.	DRAFTS	CHECKER	ENG. APP.	REQ.	ITEM	PART NO.	DESCRIPTION	SYMBOL
B		REDRAWN	13/12-65		RD	BCS	(AP)					

PART NO	A	B	C	VENDOR'S NO
CU10012 - 1	2 1/2	2 1/4	1/2	17B - 5 - 3
CU10012 - 2	3	2 3/4	1/2	17B - 6 - 3



.098 (+.003 -.001)
2 HOLES

MARK ON REAR TMC PART NO.
W/LATEST REVISION LETTER

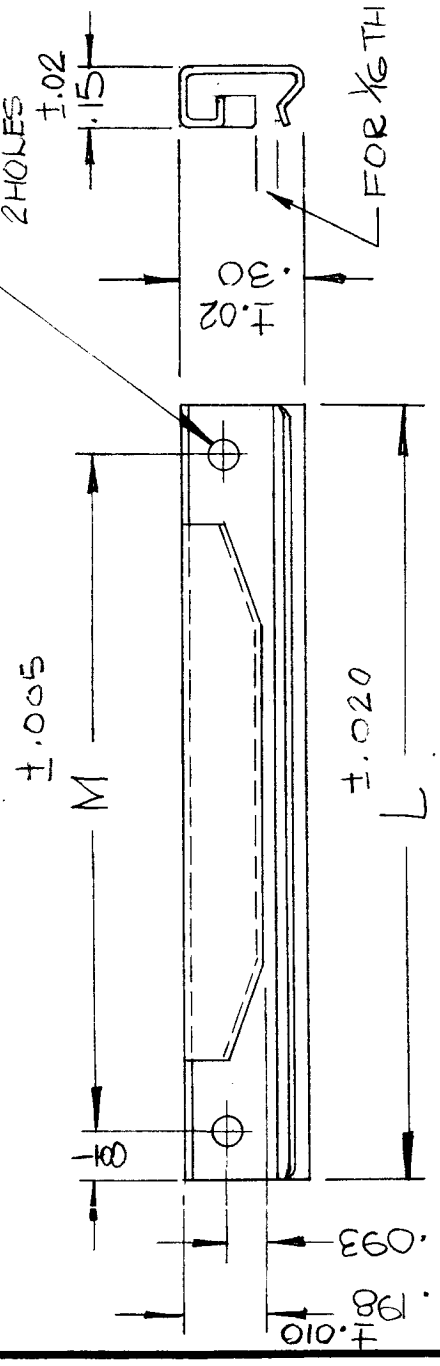
NOTE:
MOUNT WITH RIVET EY10004
VENDOR: S401-254

AMC 20	020/65	A10376/10374	18-10-65	DATE	TMC (Canada) LIMITED OTTAWA ONTARIO	
MODEL	PROJECT NO.	ASS'Y. NO.	USED ON	STOCK SIZE	RETAINER	
				MATERIAL	R.C. BOARD	
				WEIGHT PER PC.		
				TYPE & TEMPER	Also	
				HEAT TREAT. SPEC.	DRAWN	
				IF IT IS FOUND DESIRABLE TO CHANGE ANY TOLERANCE OR OTHER DETAIL SPECIFIED ON THIS DRAWING NOTIFY THE PURCHASER PROMPTLY.	ELEC. DES. APP. MECH. DES. APP.	
				SCALE	CHECKED	
				DIMENSIONS IN INCHES UNLESS OTHERWISE SPECIFIED	FINAL APPROVAL	
				DRILL, PUNCH, COMMERCIAL STOCK SIZES AND MANUFACTURERS TOLERANCES ARE NOT INCLUDED.	CU10012	
ALL OTHERS	DEC. DIM. ±	FRAC. DIM. ±	ANGULAR DIM ±	FINISH & SPEC. NO.		
		1/64		B		

CU 10015

ISSUE	ITEM	CHANGED FROM	DATE	CN. NO.	DRAFTS	CHECKER	ENG. APP.	REQ.	ITEM	PART NO.	DESCRIPTION	SYMBOL																								
φ		REL TO PROD.	9/4/68		SR	J	J																													
<table border="1" style="width:100%"> <thead> <tr> <th>TMC PART*</th> <th>MFGR PART*</th> <th>L</th> <th>M</th> </tr> </thead> <tbody> <tr> <td>CU10015-1</td> <td>11909-300-1</td> <td>2</td> <td>1.750</td> </tr> <tr> <td>-2</td> <td>-2</td> <td>2 1/2</td> <td>2.250</td> </tr> <tr> <td>-3</td> <td>-3</td> <td>3</td> <td>2.750</td> </tr> <tr> <td>-4</td> <td>-4</td> <td>3 1/2</td> <td>3.250</td> </tr> <tr> <td>-5</td> <td>-5</td> <td>4</td> <td>3.750</td> </tr> </tbody> </table>													TMC PART*	MFGR PART*	L	M	CU10015-1	11909-300-1	2	1.750	-2	-2	2 1/2	2.250	-3	-3	3	2.750	-4	-4	3 1/2	3.250	-5	-5	4	3.750
TMC PART*	MFGR PART*	L	M																																	
CU10015-1	11909-300-1	2	1.750																																	
-2	-2	2 1/2	2.250																																	
-3	-3	3	2.750																																	
-4	-4	3 1/2	3.250																																	
-5	-5	4	3.750																																	

STANDARD DRAWING



MFGR* S10045-69

MODEL	PROJECT NO.	ASSY. NO.	DATE												
			9/4/68												
USED ON															
MAXIMUM ALLOWABLE TOLERANCES HAVE BEEN DETERMINED AND DEVIATIONS WILL BE CAUSE FOR REJECTION. REMOVE ALL BURRS AND SHARP EDGES		IF IT IS FOUND DESIRABLE TO CHANGE ANY TOLERANCE OR OTHER DETAIL SPECIFIED ON THIS DRAWING NOTIFY THE PURCHASER PROMPTLY.													
TOLERANCES															
DEC. DIM. ±		SCALE													
FRAC. DIM. ±		DIMENSIONS IN INCHES													
ANGULAR DIM. ±		UNLESS OTHERWISE SPECIFIED													
DRILL, PUNCH, COMMERCIAL STOCK SIZES AND MANUFACTURERS TOLERANCES ARE NOT INCLUDED.															
STOCK SIZE		WEIGHT PER PC.													
.010															
MATERIAL		TYPE & TEMPER													
BERYLLIUM COPPER															
HEAT TREAT. SPEC.		FINISH & SPEC. NO.													
QQ-P-416, TYPE II		CLASS 2, CAD. PLATE.													
<table border="1" style="width:100%"> <tr> <td>DRAWN</td> <td>ELC. DES. APP.</td> <td>MECH. DES. APP.</td> </tr> <tr> <td>RPC</td> <td>J</td> <td>J</td> </tr> <tr> <td>CHECKED</td> <td colspan="2">FINAL APPROVAL</td> </tr> <tr> <td></td> <td colspan="2">CU10015-φ</td> </tr> </table>				DRAWN	ELC. DES. APP.	MECH. DES. APP.	RPC	J	J	CHECKED	FINAL APPROVAL			CU10015-φ	
DRAWN	ELC. DES. APP.	MECH. DES. APP.													
RPC	J	J													
CHECKED	FINAL APPROVAL														
	CU10015-φ														
<p style="text-align: center;">TMC (Canada) LIMITED OTTAWA, ONTARIO</p> <p style="text-align: center;">GUIDE, P.C BOARD</p>															

CU 10016

ISSUE	ITEM	CHANGED FROM	DATE	CN. NO.	DRAFTS	CHECKER	ENG. APP.	REQ.	ITEM	PART NO.	DESCRIPTION	SYMBOL
Ø		REL TO PROD	JULY 11/68		AP		<i>W</i>					

NOTE -
COLOUR-BLUE
MAT'L - NYLON } *SLEEVE*

STANDARD DRAWING

MEGR. - S401-22G
 PART NO. - YEC110

TMC (Canada) LIMITED
 OTTAWA ONTARIO

FERRULE, INSULATED

STOCK SIZE	
MATERIAL	WEIGHT PER FC.
TYPE & TEMPER	
HEAT TREAT. SPEC.	
FINISH & SPEC. NO.	

MAXIMUM ALLOWABLE TOLERANCES HAVE BEEN DETERMINED AND DEVIATIONS WILL BE CAUSE FOR REJECTION. REMOVE ALL BURRS AND SHARP EDGES	IF IT IS FOUND DESIRABLE TO CHANGE ANY TOLERANCE OR OTHER DETAIL SPECIFIED ON THIS DRAWING NOTIFY THE PURCHASER PROMPTLY.
TOLERANCES	SCALE <i>N.T.S.</i>
DEC. DIM. ±	DIMENSIONS IN INCHES
FRAC. DIM. ±	UNLESS OTHERWISE SPECIFIED
ANGULAR DIM. ±	DRILL, PUNCH, COMMERCIAL STOCK SIZES AND MANUFACTURERS TOLERANCES ARE NOT INCLUDED.

MODEL	PROJECT NO.	ASSY. NO.	DATE
			JULY 11/68

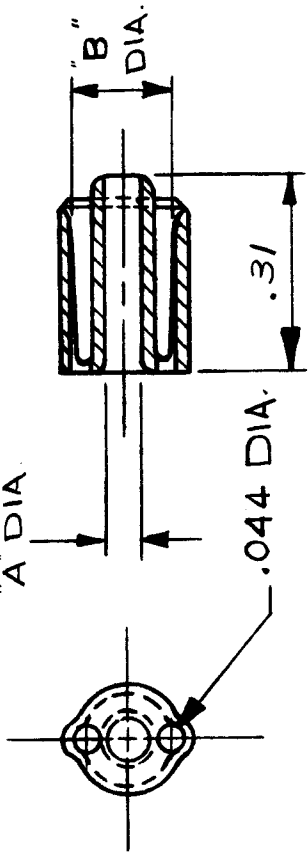
USED ON	

AP	MECH. DES. APP.
BPC	ELEC. DES. APP.
	FINAL APPROVAL

Ø10016	
--------	--

CU 10018

ISSUE	ITEM	CHANGED FROM	DATE	CN. NO.	DRAFTS	CHECKER	ENG. APP.	REQ.	ITEM	PART NO.	DESCRIPTION	SYMBOL
Ø		REL TO PROD			AP	ES	N					



STANDARD DRAWING

TMC DASH NO.	PART NO.	"A" DIA.	"B" DIA.	COLOUR
-1	YNC110	.080	.168	BLUE

NOTE: MATERIAL; TIN PLATED BRASS

MANUFACTURER - S401-226

MODEL		PROJECT NO.	ASS'Y. NO.	DATE	DEC 31/68	
TMC (Canada) LIMITED		OTTAWA		ONTARIO		
FERRULE, UNINSULATED		STOCK SIZE		WEIGHT PER PC.		
AP		MATERIAL		TYPE & TEMPER		
DRAWN SIMPSON		ELEC. DES. APP.		MECH. DES. APP.		
CHECKED		FINAL APPROVAL		Ø		
TOLERANCES		SCALE N.T.S.		IF IT IS FOUND DESIRABLE TO CHANGE ANY TOLERANCE OR OTHER DETAIL SPECIFIED ON THIS DRAWING NOTIFY THE PURCHASER PROMPTLY.		
DEC. DIM. ± .X = .05		DIMENSIONS IN INCHES UNLESS OTHERWISE SPECIFIED		DRILL: PUNCH, COMMERCIAL STOCK SIZES AND MANUFACTURERS TOLERANCES ARE NOT INCLUDED.		
FRAC. DIM. ± 1/64 .XX = .01		TOLERANCES		SCALE N.T.S.		
ANGULAR DIM. ± 0' 30' .XXX = .005		MAXIMUM ALLOWABLE TOLERANCES HAVE BEEN DETERMINED AND DEVIATIONS WILL BE CAUSE FOR REJECTION. REMOVE ALL BURRS AND SHARP EDGES		DIMENSIONS IN INCHES UNLESS OTHERWISE SPECIFIED		
ALL OTHERS		TOLERANCES		DRILL: PUNCH, COMMERCIAL STOCK SIZES AND MANUFACTURERS TOLERANCES ARE NOT INCLUDED.		

ISSUE	ITEM	CHANGED FROM	DATE	CH. NO.	DRAFTS	CHECKER	ENG. APP.	REQ.	ITEM	PART NO.	DESCRIPTION	SYMBOL
0		PROD RELEASE	9 MAR 73		C.C.	HCS	SOW					

.500

NOTE: TO BE USED IN CONJUNCTION WITH CU10023, NYLON RATCHET BUCKLE.

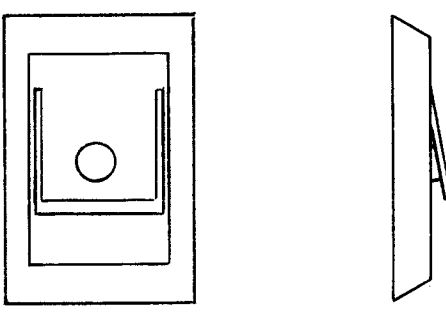
MANUFACTURER: HERMAN H SMITH, PART NO. 802

MODEL	PROJECT NO.	ASSY. NO.	DATE
			9 MAR 73

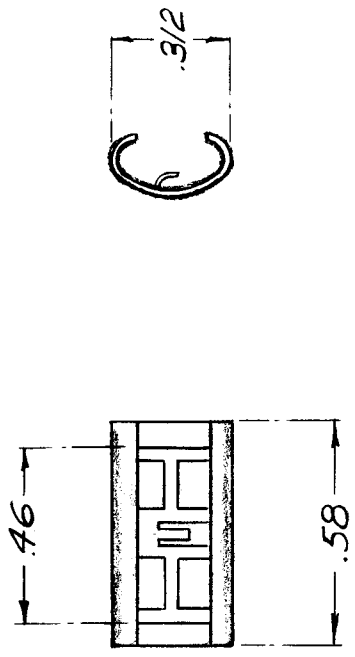
TMC (Canada) LIMITED OTTAWA ONTARIO	
STRAPPING,	
NYLON PERFORATED	
C. CHARLES	H.C. SCHAFER
DRAWN	ELEC. DES. APP.
	S. WITTEN
CHECKED	MECH. DES. APP.
	FINAL APPROVAL
	CU 10022

STOCK SIZE	WEIGHT PER FC
MATERIAL	TYPE & TEMPER
HEAT TREAT. SPEC.	
FINISH & SPEC. NO.	

<p>MAXIMUM ALLOWABLE TOLERANCES HAVE BEEN DETERMINED AND DEVIATIONS WILL BE CAUSE FOR REJECTION REMOVE ALL BURRS AND SHARP EDGES</p> <p>TOLERANCES</p> <p>DEC. DIM. ± .X = .05</p> <p>FRAC. DIM. ± 1/64 .XX = .01</p> <p>ANGULAR DIM. ± 0'30' .XXX = .008</p>	<p>IF IT IS FOUND DESIRABLE TO CHANGE ANY TOLERANCE OR OTHER DETAIL SPECIFIED ON THIS DRAWING NOTIFY THE PURCHASER PROMPTLY.</p> <p>SCALE 1/1</p> <p>DIMENSIONS IN INCHES UNLESS OTHERWISE SPECIFIED</p> <p>DRILL: PUNCH, COMMERCIAL STOCK SIZES AND MANUFACTURERS TOLERANCES ARE NOT INCLUDED.</p>
---	---

ISSUE	ITEM	CHANGED FROM	DATE	CM. NO.	DRAFTS	CHECKER	ENG. APP.	REQ.	ITEM	PART NO.	DESCRIPTION	SYMBOL
Φ		PROD RELEASE	12 MAR 73		C.C.	H.C.S.	SDW					
												
<p>NOTE: TO BE USED IN CONJUNCTION WITH CU10022; NYLON STRAPPING</p> <p>MANUFACTURER: HERMAN H. SMITH, PART NO. 803</p>												
MODEL		PROJECT NO.		ASSY. NO.		DATE		STOCK SIZE		TMC (Canada) LIMITED OTTAWA ONTARIO		
MAXIMUM ALLOWABLE TOLERANCES HAVE BEEN DETERMINED AND DEVIATIONS WILL BE CAUSE FOR REJECTION. REMOVE ALL BURRS AND SHARP EDGES		IF IT IS FOUND DESIRABLE TO CHANGE ANY TOLERANCE OR OTHER DETAIL SPECIFIED ON THIS DRAWING NOTIFY THE PURCHASER PROMPTLY.		USED ON		SCALE 1:1		MATERIAL		NYLON RATCHET		
DEC. DIM. ± .05		.X = .05		DIMENSIONS IN INCHES UNLESS OTHERWISE SPECIFIED		TYPE & TEMPER		WEIGHT PER PC.		DRAWN		
FRAC. DIM. ± 1/64		.XX = .01		DRILL: PUNCH, COMMERCIAL STOCK SIZES AND MANUFACTURERS TOLERANCES ARE NOT INCLUDED.		HEAT TREAT. SPEC.		TYPE & TEMPER		C. CHARLES		
ANGULAR DIM. ± 0° 30'		.XXX = .005						FINISH & SPEC. NO.		ELEC. DES. APP.		
ALL OTHERS								MECH. DES. APP.		S. WITTEN		
								FINAL APPROVAL		CU10023		
										Φ		

ISSUE	ITEM	CHANGED FROM	DATE	CH. NO.	DRAFTS	CHECKER	ENG. APP.	REQ.	ITEM	PART NO.	DESCRIPTION	SYMBOL
Φ		PROD RELEASE	12 MAR 73		C.C.	HCS	SOW					



TMC PART NO.	DIA. OF SHIELD	ADJUSTMENT GAP PIN DIA.
CU-10024	.076 ± .095	.082

NOTE: SHADED AREA INDICATES INSULATION WRAPPING.

MANUFACTURER: THOMAS AND BETTS, PART NO. RSK 100

MMX 5 ()	PROJECT NO.	12 MAR 73	DATE
MODEL	ASSY. NO.		
USED ON			
MAXIMUM ALLOWABLE TOLERANCES HAVE BEEN DETERMINED AND DEVIATIONS WILL BE CAUSE FOR REJECTION REMOVE ALL BURRS AND SHARP EDGES		IF IT IS FOUND DESIRABLE TO CHANGE ANY TOLERANCE OR OTHER DETAIL SPECIFIED ON THIS DRAWING NOTIFY THE PURCHASER PROMPTLY.	
TOLERANCES DEC. DIM. ± .X = .05 FRAC. DIM. ± 1/64 ANGULAR DIM. ± 0° 30'		SCALE 2 : 1 DIMENSIONS IN INCHES UNLESS OTHERWISE SPECIFIED DRILL: PUNCH, COMMERCIAL STOCK SIZES AND MANUFACTURERS TOLERANCES ARE NOT INCLUDED.	
ALL OTHERS			

TMC (Canada) LIMITED OTTAWA ONTARIO	FERRULE, INSULATED
C. CHARLES	HCSCHAFFER
DRAWN	ELEC. DES. APP.
CHECKED	S. WITTEN
	MECH. DES. APP.
	FINAL APPROVAL
	CU 10024