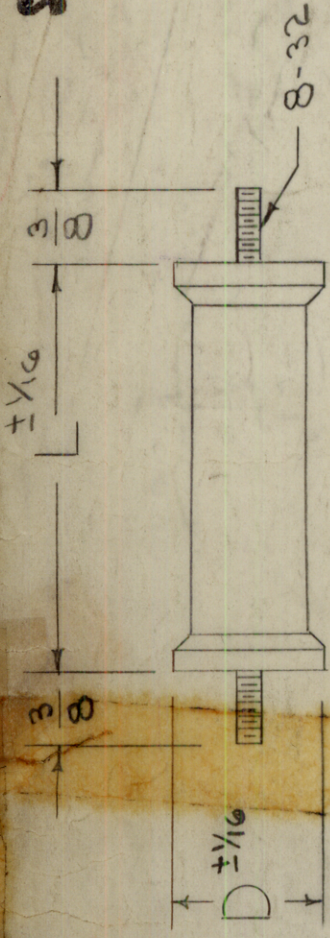


STANDARD DRAWING



TYPE DESIGNATION TO BE IN FOLLOWING FORM

CX-102 K 102 M

TYPE TOLERANCE CAPACITANCE VOLTAGE RATING (PF) (VOLTS D.C.)

LAST DIGIT INDICATES NO. OF ZEROS

SPECIFICATIONS

TEMP. RANGE: -55°C TO +125°C

TEST VOLTAGE: 150% OF SPECIFIED

VOLTAGE AT 25°C FOR ONE MINUTE.

DIELECTRIC: TEFLON

MATERIAL: BODY - GLASS, CERAMIC OR EQUIV.

END CAP & STUD - METAL, NON-MAGNETIC

DIMENSIONS	PEAK PULSE VOLTS	VOLTS DC	CAP PF
1 9/16	13/32	3000	.0005
1 5/8	13/16		.001
1 5/8	13/16		.002
1 5/8	1 1/8		.005
2 1/8	1 1/8		.01
2 1/8	1 5/8		.02

VOLTAGE RATING		TOLERANCE	
LETTER	VOLTS DC	LETTER	%
L	3000V	G	±2%
M	4000V	J	±5%
N	6000V	K	±10%
P	8000V		
R	12KV		
S	18KV		
T	14KV		

NOTICE TO PERSONS RECEIVING THIS DRAWING

THE TECHNICAL MATERIEL CORPORATION claims proprietary right in the material depicted herein. This drawing is issued in confidence for engineering information only and may not be reproduced or used to manufacture any thing shown hereon without permission from THE TECHNICAL MATERIEL CORPORATION. The user of this drawing is bound for mutual assistance and is subject to recall at any time.

Property of:
THE TECHNICAL MATERIEL CORPORATION
MAMARONECK, NEW YORK

ISSUE ITEM	CHANGED FROM	DATE	CH. NO.	DRAFTS	CHECKER	ENG. APP.
D	2 DIM. & VOLT-RAT. CHARTS UPD. TEMP. & TEST VOLT. NOTES DELE.	12.22.64	13063	AB	AB	AB
C	2 SPECIFICATIONS ADD. CAP. COLUMN WAS 14.4d	8.13.64	12103	AB	AB	AB
B	1 3/4L ITEM ADDED TO CHART. TEMP. RANGE, CODEL PART SAMPLE MOD.	8-14-63	9755	AK	AK	AK
A	1 ADDED VOLTAGE 14KV	4/27/59		AB	AB	AB

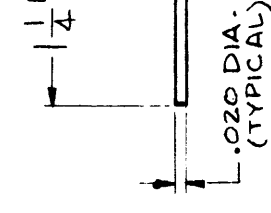
TOLERANCES
DEC. DIM. ±
FRAC. DIM. ±
ANGULAR DIM. ±

REQ. PER UNIT
MODEL
PROJECT NO.
ASSY. NO.
DATE
USED ON

REQ. ITEM	PART NO.	DESCRIPTION	SYMBOL
		THE TECHNICAL MATERIEL CORP. MAMARONECK, NEW YORK	
		CAPACITOR, FIXED	
		COO. 11/15	AB
		DRAWN	AB
		CHECKED	AB
		ELEC. DES. APP. MECH. DES. APP.	
		FINISH & SPEC. NO.	CX-102
		FINAL APPROVAL	D

STANDARD DRAWING

THE CONTENTS OF THIS DRAWING ARE THE EXCLUSIVE PROPERTY OF THE TECHNICAL MATERIEL CORP. ITS UNAUTHORIZED USE OR REPRODUCTION IN WHOLE OR IN PART IS STRICTLY FORBIDDEN.



MFRS. PART NO. MARKING
(See Specification 4B)
CATHODE COLOR BAND
(See Specification 4A)

- SPECIFICATIONS**
- TYPE: SILICON p-n JUNCTION.
 - TEMPERATURE RANGE: -50°C TO +120°C.
 - PHYSICAL CHARACTERISTICS:
 - CONSTRUCTION: HERMETICALLY SEALED - GLASS TO METAL FUSED AND METAL TO METAL WELDED SEALS.
 - TERMINALS: TINNED COPPER LEADS.
 - MARKING:
 - BROAD COLOR BAND ON BODY INDICATES CATHODE END (COLOR OPTIONAL).
 - MFRS. PART NO. (PER CHART) WILL BE DESIGNATED ON BODY BY DIGITAL MARKING.
- EXAMPLE: TMC PART NO. CX-106-11 WILL BE MARKED V582.

MFRS. REF.: S401-119 S401-499

REQ. ITEM	PART NO.	DESCRIPTION	SYMBOL
		THE TECHNICAL MATERIEL CORP. MAMARONECK, NEW YORK	
STOCK SIZE		CAPACITOR, VOLTAGE - VARIABLE,	SILICON
MATERIAL			
TYPE & TEMPER		DRAWN	FINAL APPROVAL
HEAT TREAT. SPEC.		G. Jansen	BP
FINISH & SPEC. NO.		1/14/63	CX-106
		ELEC. DES. APP. MECH. DES. APP.	

T M C PART NUMBER	MFRS. PART NUMBER	MAX. LEAKAGE CURRENT AT -20V AND +75°C (uuf)	CAPACITANCE (S Notes 1 & 2)		"Q" AT 50 MC			MAX. W. V. VOLTS D. C.
			AT 4 VDC uuf	APPROX. RANGE uuf	MIN. AT 4 VDC	TYP. AT 4 VDC	TYP. AT MAX. W. V.	
CX-106-1	V56	.4	56	32-145	7.0	13.5	24.8	15
CX-106-2	V27	.4	27	14-70	7.0	15.7	33.8	20
CX-106-3	V20	.4	20	10-50	7.0	18.7	40.2	20
CX-106-4	V56E	.4	56	20-145	7.0	13.5	41.8	40
CX-106-5	V27E	.4	27	7-70	7.0	15.7	63.5	65
CX-106-6	V47E	.4	47	14-120	7.0	15.4	53.8	50
CX-106-7	V584	.05	56	32-145	7.0	13.5	24.8	15
CX-106-8	V581	.05	27	14-70	7.0	15.7	33.8	20
CX-106-9	V580	.05	20	10-50	7.0	18.7	40.2	20
CX-106-10	V585	.05	56	20-145	7.0	13.5	41.8	40
CX-106-11	V582	.05	27	7-70	7.0	15.7	63.5	65
CX-106-12	V583	.05	47	14-120	7.0	15.4	53.8	50
CX-106-13	V710	.05	100	57-250	8.0	11.0	20.2	15
CX-106-14	V100		100	57-260	8.0	11.0	20.2	15
CX-106-15	V33E		33	9.0-85.0	7.0	14.6	56.5	60
CX 106-16	V100E		100	57-260	8.0		20.2	20
CX 106-17	V10E	.1	10		3.5			100
CX 106-18	PC135	.5	10		150			50

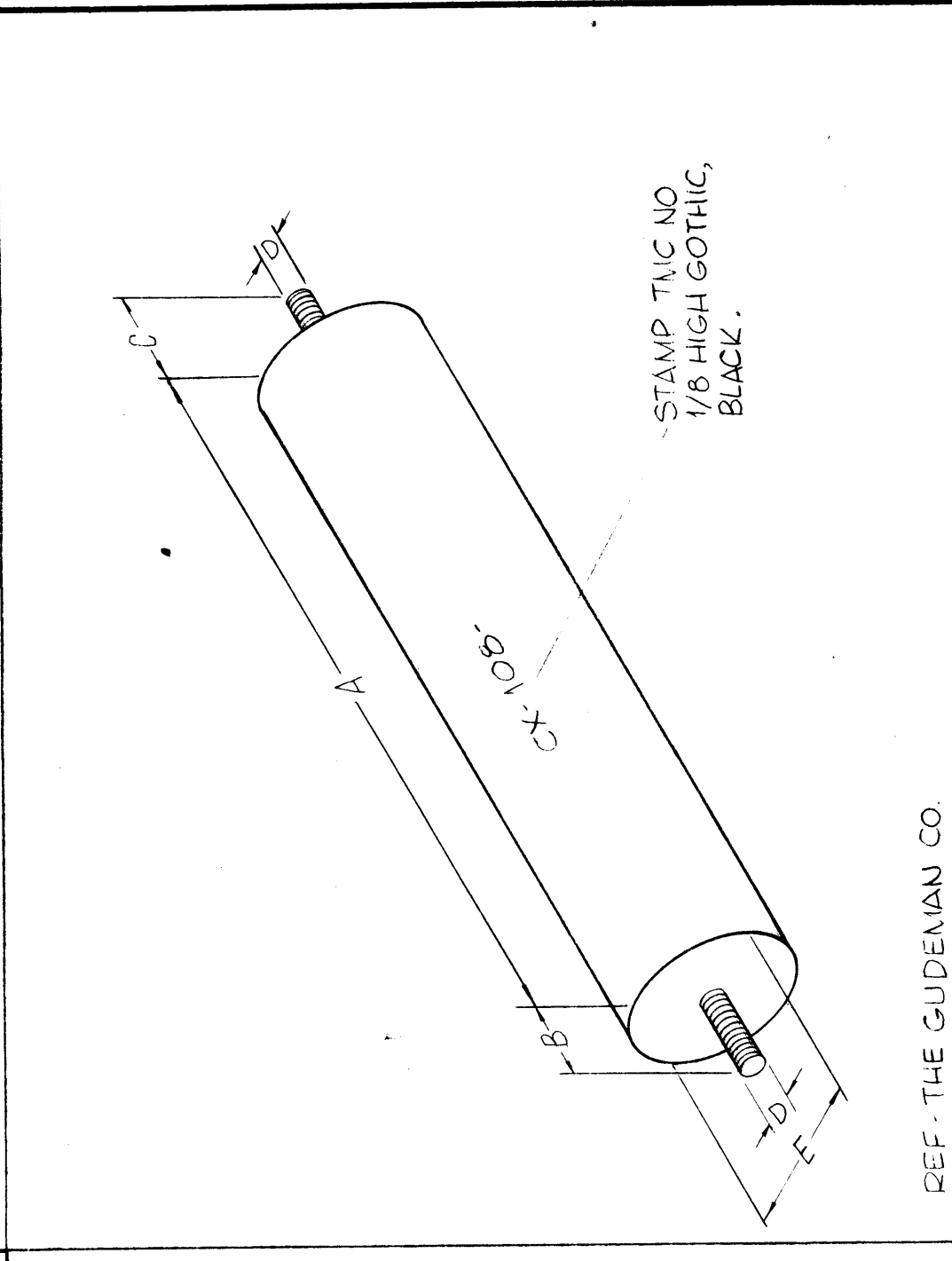
- NOTES:**
- ALL CAPACITANCE VALUES ARE ±20% AT 25°C.
 - APPROXIMATE RANGE SPECIFIED FROM 0.1 VOLTS TO MAXIMUM WORKING VOLTS.

DATE	CH. NO.	DRAFTS	CHACKER	ENG. APP.
11-3-73	20967	GE	Q	Q
9-26-68	19051	AS	Q	Q
SCALE:				
MAXIMUM ALLOWABLE TOLERANCES HAVE BEEN DETERMINED AND ANY DEVIATIONS WILL BE CAUSE FOR REJECTION. REMOVE ALL BURRS AND SHARP EDGES				
UNLESS OTHERWISE SPECIFIED: DIMENSIONS ARE IN INCHES TOLERANCES ON FRACTIONS ± 1/6 DECIMALS ± 0.5 ANGLES ± 1/20				

STANDARD DRAWING

TMC NO.	MFG. NO.	CAPACITANCE ± 10%	VOLTS	A $\frac{1}{16}$	B	C	D	E $\frac{1}{32}$	OPER. TEMP.	USED ON
CX-108-1	857 SERIES	.003 MFD.	25 KV	9-1/2	3/4	3/4	1/4-20	1-3/4	-60°+85°C	GPT-40K
-2	857 SERIES	.003 MFD	30KV	10	3/4	3/4	1/4-20	1-3/4	-60°+85°C	GPT-200K
-3	857 SERIES	.001 MFD	25KV	5-3/4	3/4	3/4	1/4-20	1-3/4	-60°+85°C	GPT-200K

REVISIONS			
SYM	DESCRIPTION	DATE	E.M.N. NO.
Q	ORIGINAL RELEASE FOR PRODUCTION	5-16-64	
A	B & C DIM WERE 1/2	2-16-64	15794



REF - THE GUDEMAN CO.	
REQ'D.	ITEM
F. BUDETTI	
LIST OF MATERIAL	
MATERIAL	DESCRIPTION
FINISH	THE TECHNICAL MATERIEL CORP. MAMARONECK, NEW YORK
CAPACITOR FIXED, TEFLON (UNBREAKABLE)	

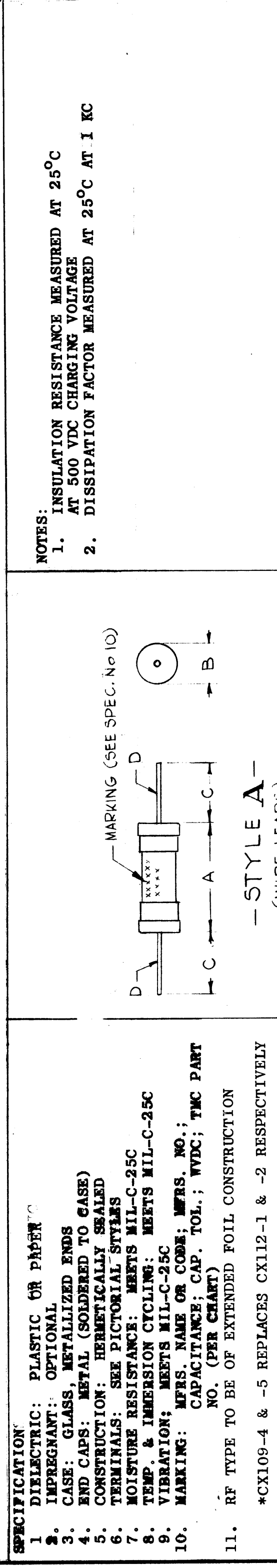
QTY./UNIT		MODEL USED ON	ASBY. NO.
SCALE	CODE		
THE CONTENTS OF THIS DRAWING ARE THE EXCLUSIVE PROPERTY OF THE TECHNICAL MATERIEL CORP. ITS UNAUTHORIZED USE OR REPRODUCTION IN WHOLE OR IN PART IS STRICTLY FORBIDDEN.			
NOTES			

DRAWN	SRG	DATE	11-14-62
CHECKED	uo	DATE	
ELECT. DES.	SRG	DATE	4/28/64
MECH. DES.	HC	DATE	4/28/64
SHEET		CX-108	A
REV. LTR.			

TMC PART NO.	MFRS PART NO.	CAP. MF	STYLE	CAP. TOL. ± %	WVDC @ 85 C	DIEL. STRENGTH TEST @ 5 sec. (VDC)	INSUL. RES. MEGOHMS MINIMUM (SEE NOTE NO. 1)	DISSIPATION FACTOR (MAX) (SEE NOTE NO. 2)	OPER. TEMP. RANGE C	RF TYPE (NOTE 11)	Q MIN AT 1MC	DIMENSIONS		
												A ± 1/16	B ± 1/16	C
CX-109-1	GC148-004J	.001	A	5	3000	6000	20,000	0.6%	-55 to + 125	YES	1000	1-3/16	17/32	1-5/8-0" ± 1"
CX-109-2	GC247G103K	.01	B	10	1000	2000	10,000	0.6%	-55 to + 105	YES	NR	1-3/16	17/32	3/8 ± 1/32
CX-109-3	GC245G105K	1.0	B	10	1000	2000	10,000	0.6%	-55 to + 105	NO	NR	2-3/4	1-1/4	3/8 ± 1/32
CX-109-4	GC247-002-20	.1	B	20	1000	2000	2,000	0.6%	-55 to + 85	YES	NR	1-3/4	5/8	3/8 ± 1/32
CX-109-5	GC247J104-20	.1	B	20	2000	4000	100,000	0.6%	-55 to + 85	YES	NR	2-1/4	3/4	3/8 ± 1/32

REQ. ITEM	PART NO.	DESCRIPTION	SYMBOL
		THE TECHNICAL MATERIEL CORP. MAMARONECK, NEW YORK	
		CAPACITOR, FIXED,	
	NO.	111	BP
	DRAWN	RON KOHN	
	HEAT TREAT. SPEC.	7-18-63	
	CHECKED	2-8-64	
	ELEC. DES. APP.	MECH. DES. APP.	
	FINISH & SPEC. NO.	CX-109	A
		FINAL APPROVAL	

NOTES:
1. INSULATION RESISTANCE MEASURED AT 25°C
AT 500 VDC CHARGING VOLTAGE
2. DISSIPATION FACTOR MEASURED AT 25°C AT 1 KC



SYM	DESCRIPTION	DATE	CH. NO.	DRAFTS	CHECKER	ENG. APP.
A	ON SPEC. 1" OR PAPER, ADDED STYLE B, SPEC II & * NOTE ADDED ON CHART CX109-2, -3, -4 & SADDLED ON CHART COL'R/TYP WAS 'RF CAPACITY	2-16-66	15682	60L	JCB	MMH
	UNLESS OTHERWISE SPECIFIED: DIMENSIONS ARE IN INCHES TOLERANCES ON FRACTIONS ± 1/64 DECIMALS ± .005 ANGLES ± 1/2°	SCALE: 5/16" = 1"				
	MAXIMUM ALLOWABLE TOLERANCES HAVE BEEN DETERMINED AND ANY DEVIATIONS WILL BE CAUSE FOR REJECTION. REMOVE ALL BURRS AND SHARP EDGES	AX-418				
	REQ. PER UNIT	MODEL	SECTION	ASSY. NO.	DATE	
	2	TTR-10			7-12-63	

REVISIONS

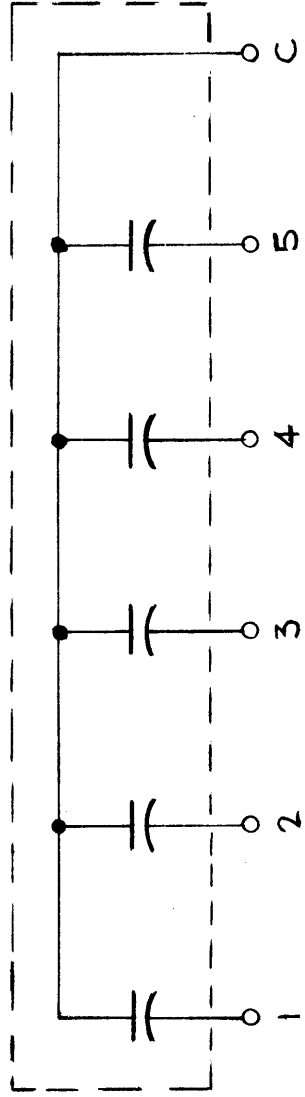
SYM	DESCRIPTION	DATE	EM.N. NO.	DRAFT	CHKD	APPD
X1	ADDED S401-81. REVISED DIM. TO CONFORM	7/13/64		TR.		
O	ORIGINAL RELEASE FOR PRODUCTION	4/24/64		O	A.M. @	

CX-110

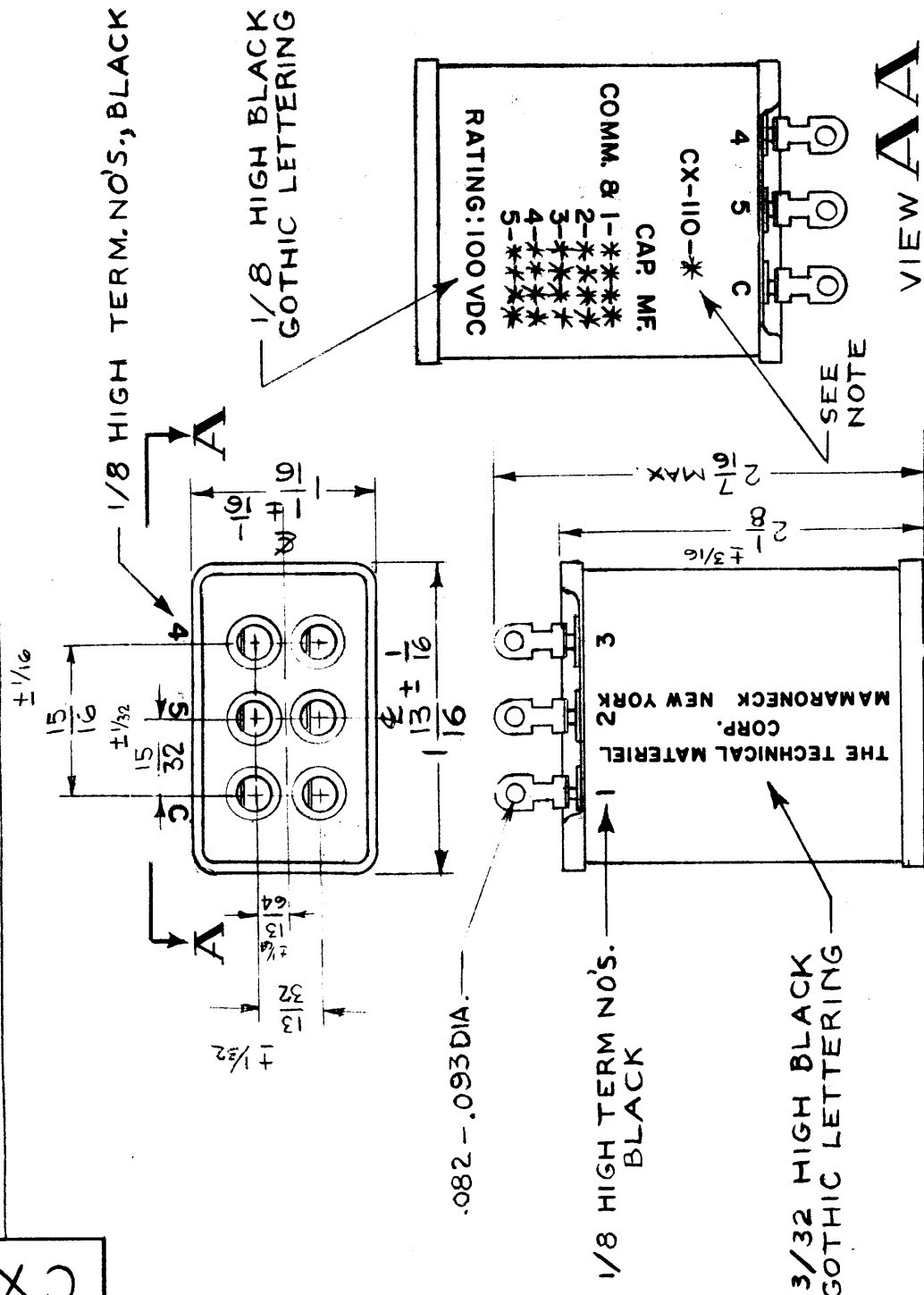
PART NUMBER	CAPACITANCE (μf) TO COM. TERM.				VOLTAGE MAX.	USED ON	QTY REQD
	TERM.#1	TERM.#2	TERM.#3	TERM.#4			
CX-110-1	.051	.0765	.1275	.255	.765	100 VDC MAF-1	2
CX-110-2	.0796	.1194	.1990	.398	1.194	100VDC MAF-1	2

SPECIFICATIONS:

1. QUANTITY OF SECTIONS — 5
2. WORKING VOLTAGE DATA:
 - A) RATING — SEE CHART
 - B) FLASH TEST — 200VDC BETWEEN TERMINALS
3. CAPACITANCE TOL. $\pm 5\%$.
4. OPERATING TEMPERATURE: $-55^{\circ}C$ TO $85^{\circ}C$
5. CASE DATA:
 - A) MATERIAL — METAL, STYLE CP70 MIL-C-25
 - B) HERMETICALLY SEALED
6. TERMINAL DATA: SOLDER LUGS; QUANTITY 6; TERM'S. NOT GRD. TO CASE
7. MOUNTING DATA — BRACKETS CPO75A2



SCHEMATIC DIAGRAM



REQ'D.	ITEM	PART NUMBER	DESCRIPTION	SYMBOL
	T. AALTONEN		LIST OF MATERIAL	
	MATERIAL		THE TECHNICAL MATERIEL CORP. MAMARONECK, NEW YORK	
	FINISH		CAPACITOR, FIXED MYLAR DIELECTRIC	
	UNLESS OTHERWISE SPECIFIED DIMENSIONS ARE IN INCHES AND INCLUDE CHEMICALLY APPLIED OR PLATED FINISHES			
	DECIMALS .X \pm .05 .XX \pm .01 .XXX \pm .005			
	TOLERANCES			
	FRACTIONAL $\pm 1/64$ ANGLES $\pm 0^{\circ} 30'$			

NOTE:
* INDICATES DASH NO. PER ORDER TO BE INSERTED & CAPACITANCE ACCORDING TO DASH NO.

QTY/UNIT	MODEL USED ON	ASSY. NO.
MAF-1		

SCALE 1:1

SEE NOTE

THE CONTENTS OF THIS DRAWING ARE THE EXCLUSIVE PROPERTY OF THE TECHNICAL MATERIEL CORP. ITS UNAUTHORIZED USE OR REPRODUCTION IN WHOLE OR IN PART IS STRICTLY FORBIDDEN.

NOTES

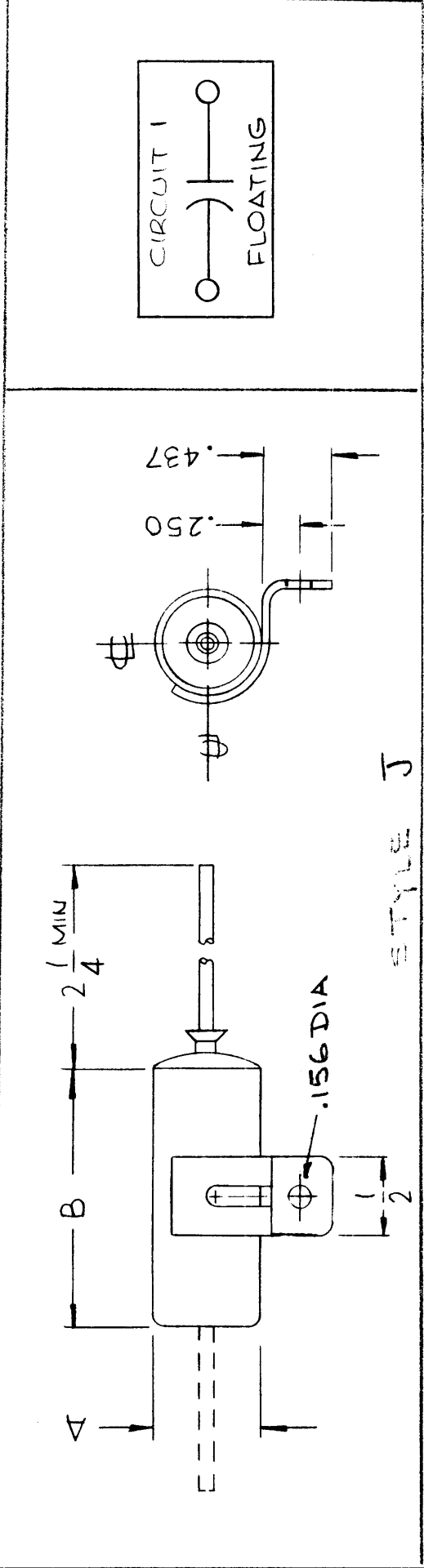
S401-112: (17750)-1
(17751)-2

S401-81: (2920)-1
(2921)-2

STANDARD DRAWING

TMC P/N	MFG P/N	CAP MFD	TOL	WORKING VOLTAGE	A	B	CIRCUIT	STYLE
CX111	XHF-277101J-10	0.1	10%	1KVDC ± 200VAC UP TO 500KHZ	±.015	± 1/32	1	J

Ø
CX111



STYLE J

SPECIFICATIONS

DIELECTRIC: PAPER, OIL IMPREGNATED
 CONSTRUCTION: EXTENDED FOIL
 NO OF SECTIONS: 1

WORKING VOLTAGE: SEE CHART

CAPACITANCE: SEE CHART

TEMPERATURE RANGE: -55°C TO 125°C

CAPACITANCE CHANGE: 10% OF ACTUAL CAPACITANCE @ 25°C,
 OVER TEMP RANGE

INSULATION RESISTANCE: 10,000 MEGOHM - MFDS OR 18000
 MEGOHMS WHICHEVER IS LESS.

POWER FACTOR: 1% MAX @ 1 kHz, 25°C

CASE TYPE: TUBULAR METAL CASE, HERMETICALLY SEALED

LEAD SIZE:
 CASE DIA
 .187 AWG SIZE #24
 .235-.312 AWG SIZE #22
 .400 OR LARGER AWG SIZE #20

REVISIONS

SYM	DESCRIPTION	DATE	E.M.N. NO.	DRAFT	CHKD	APPD
Ø	ORIGINAL RELEASE FOR PRODUCTION	12/16/66	Ø	CV		File

REQ'D.	ITEM	PART NUMBER	DESCRIPTION	SYMBOL																																			
			LIST OF MATERIAL																																				
	MATERIAL		THE TECHNICAL MATERIEL CORP. MAMARONECK, NEW YORK																																				
	FINISH		CAPACITOR, FIXED PAPER																																				
		UNLESS OTHERWISE SPECIFIED DIMENSIONS ARE IN INCHES AND INCLUDE CHEMICALLY APPLIED OR PLATED FINISHES	<table border="1"> <tr> <td>DRAWN</td> <td>DATE</td> <td>FINAL APPROVAL</td> <td>DATE</td> </tr> <tr> <td>WJD</td> <td>11/15/66</td> <td>[Signature]</td> <td>12/16/66</td> </tr> <tr> <td>CHECKED</td> <td>DATE</td> <td></td> <td></td> </tr> <tr> <td>[Signature]</td> <td>11/29/66</td> <td></td> <td></td> </tr> <tr> <td>ELECT. DES.</td> <td>DATE</td> <td></td> <td></td> </tr> <tr> <td>[Signature]</td> <td>12/16/66</td> <td></td> <td></td> </tr> <tr> <td>MECH. DES.</td> <td>DATE</td> <td></td> <td></td> </tr> <tr> <td>[Signature]</td> <td></td> <td>CX111</td> <td>Ø</td> </tr> <tr> <td></td> <td></td> <td></td> <td>SHEET</td> </tr> </table>	DRAWN	DATE	FINAL APPROVAL	DATE	WJD	11/15/66	[Signature]	12/16/66	CHECKED	DATE			[Signature]	11/29/66			ELECT. DES.	DATE			[Signature]	12/16/66			MECH. DES.	DATE			[Signature]		CX111	Ø				SHEET
DRAWN	DATE	FINAL APPROVAL	DATE																																				
WJD	11/15/66	[Signature]	12/16/66																																				
CHECKED	DATE																																						
[Signature]	11/29/66																																						
ELECT. DES.	DATE																																						
[Signature]	12/16/66																																						
MECH. DES.	DATE																																						
[Signature]		CX111	Ø																																				
			SHEET																																				
	DECIMALS	FRACTIONS																																					
	.X ± .05	± 1/64																																					
	.XX ± .01	ANGLES																																					
	.XXX ± .005	± 0° 30'																																					

NOTES

THE CONTENTS OF THIS DRAWING ARE THE EXCLUSIVE PROPERTY OF THE TECHNICAL MATERIEL CORP. ITS UNAUTHORIZED USE OR REPRODUCTION IN WHOLE OR IN PART IS STRICTLY FORBIDDEN.

Q'TY./UNIT	SCALE	GPT10KLF
MODEL USED ON	CODE	ASSY. NO.
	C	S401-112

SYM	DESCRIPTION	DATE	E.M.N. NO.	DRAFT	CHKD	APPD
XI	ON-1, D WAS 3/8, W WAS 1/4, CX113-2, MIL BRKT COLUMN & CHAR. 1A ADDED. F DIM TOL WAS ± 1/16	5/16/66		Jc		
	ORIGINAL RELEASE FOR PRODUCTION					

REVISIONS

CHARACTERISTIC 1A

SPECIFICATIONS

(Characteristic 1)

Voltage; at +25 C-See Chart
 Temperature Range: -55° C to +65° C — -55° to +85° C
 Dissipation Factor: 1% at 1,000 cps and +25° C — @ 100 CPS
 Insulation Resistance: at +25° C-20,000 Megohms Min- 20000MΩ

Term. "E"

Pillar insulator for use at altitudes up to 7,500 feet.
 Supplied with one nut, one flat washer, and one lock washer per terminal. 10-32 UNF-2 thread.

REQ'D.	ITEM	PART NUMBER	DESCRIPTION	SYMBOL
		BUDET11	LIST OF MATERIAL	
			THE TECHNICAL MATERIEL CORP. MAMARONECK, NEW YORK	
			TITLE	
			CAPACITOR, FIXED, PLASTIC, METAL CASE	
			FINISH	
			TMC Grey, S115	
			UNLESS OTHERWISE SPECIFIED DIMENSIONS ARE IN INCHES AND INCLUDE CHEMICALLY APPLIED OR PLATED FINISHES	
			FRACTIONS ± 1/64 ANGLES ± 0° 30'	
			TOLERANCES DECIMALS .X ± .05 .XX ± .01 .XXX ± .005	

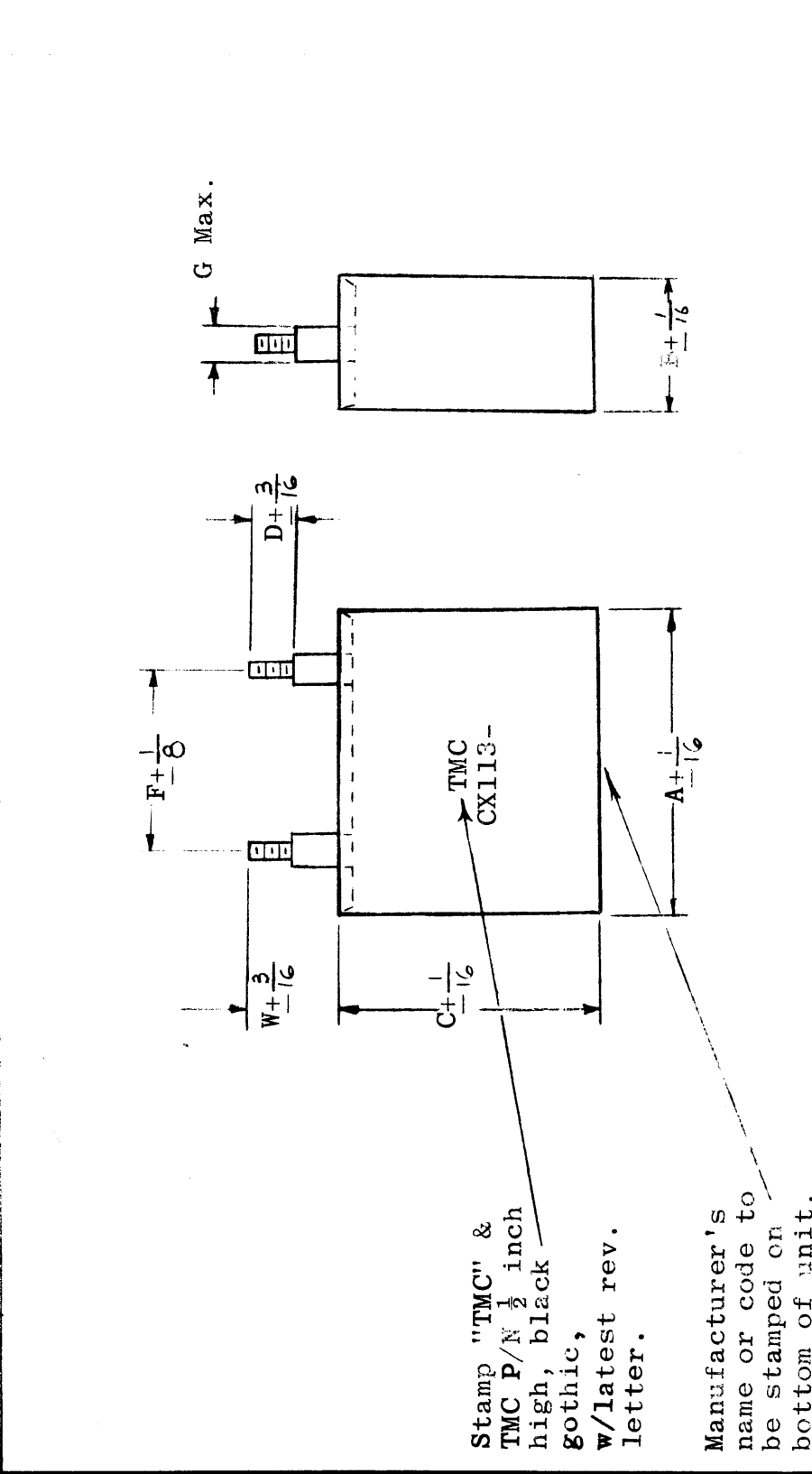
QTY./UNIT	SCALE	MODEL USED ON CODE	ASSY. NO.
NONE		B-S401-146 A-S401-112	

THE CONTENTS OF THIS DRAWING ARE THE EXCLUSIVE PROPERTY OF THE TECHNICAL MATERIEL CORP. ITS UNAUTHORIZED USE OR REPRODUCTION IN WHOLE OR IN PART IS STRICTLY FORBIDDEN.

DATE	FINAL APPROVAL	DATE	DATE	DATE	DATE	DATE	DATE	DATE
1/27/66	[Signature]	4/12/66						

ML 28 5/26/66

TMC P/N	Cap. (mfd)	Voltage	Char.	Case Dimensions							MIL BRKT # OR EQUIV.
				A	B	C	D	F	G	W	
CX113-1	0.1±10%	10KV DC	1	3 1/4	1 1/2	1 1/2	1 1/2	1 3/8			CP07-C2
CX113-2	10 ± 10%	5KVDC	1A	8	4	6	3 1/4	1 1/2	1 3/8		CP07-JG



Circ. 1

Stamp "TMC" & TMC P/N 1/2 inch high, black gothic, w/latest rev. letter.

Manufacturer's name or code to be stamped on bottom of unit.

NOTES

QTY./UNIT: NONE

SCALE: NONE

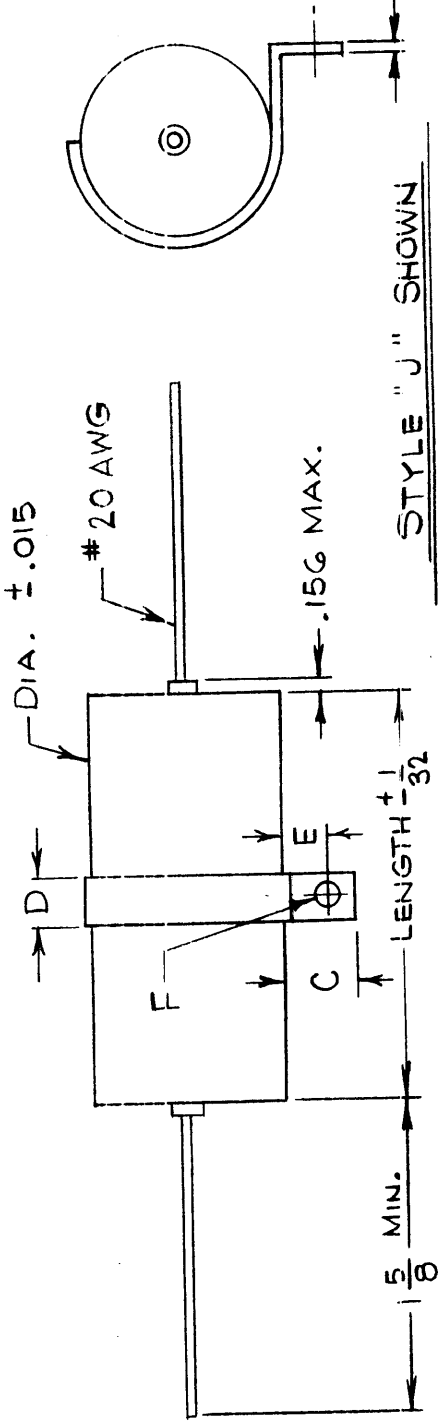
MODEL USED ON: B-S401-146, A-S401-112

ASSY. NO.:

REVISIONS

SYM	DESCRIPTION	DATE	E.M.N. NO.	DRAFT	CHKD	APPD
Ø	ORIGINAL RELEASE FOR PRODUCTION	6/25/65		DVV		

Ø CX 114



STYLE "J" SHOWN

Ø .0625 MAX.

CAPACITANCE MFD	SYM.	100VDC-SYM"B" DIA.	LENGTH
1.0	105	.400	15/16
1.5	155	.500	15/16
2.0	205	.562	15/16
3.0	305	.625	1 1/8
4.0	405	.670	1 1/8
5.0	505	.670	1 3/8
6.0	605	.670	1 7/8
8.0	805	.670	1 7/8
10	106	.750	1 7/8
12	126	.750	2 1/8
14	146	.750	2 1/8
16	166	1.00	2 1/8
20	206	1.00	2 1/8
24	246	1.00	2 1/8

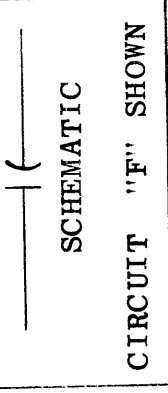
CASE DIA.	C±1/16	D±1/16	E±1/32	F±.005
<0.562	5/16	1/4	3/16	.144
≥0.562	7/16	1/2	1/4	.156

BRACKET DIM. STYLE "J"

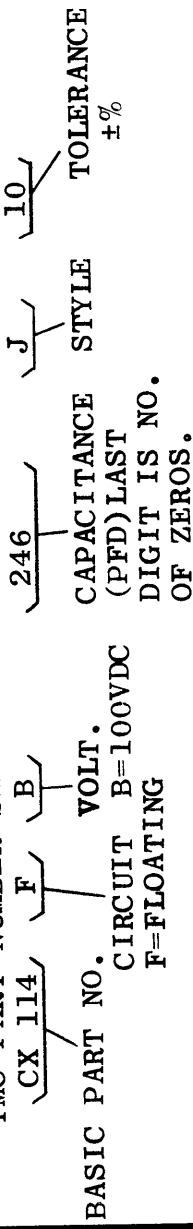
SPECIFICATIONS

CASE: HERMETICALLY SEALED, METALLIC, NON-MAGNETIC
 OPERATING TEMP. RANGE: -55°C TO +125°C
 CAPACITANCE: AT 25°C, AT OR REFERRED TO 60 CPS
 DISSIPATION FACTOR: LESS THAN 1% AT 25°C AND 60 CPS
 INSULATION RESISTANCE (MΩ-MFD MIN.):
 AT 25°C - 50,000
 AT 85°C - 500
 AT 125°C - 10

TEST VOLTAGE: 200% RATED, FOR TWO MINUTES, AT 25 C
 DERATING: -1VDC PER DEGREE C ABOVE 85°C
 ACCELERATED LIFE: 140% RATED VOLTAGE AT 125°C -250 HRS.
 TEMP. CYCLING: PER MIL-C-25
 MOISTURE: PER MIL-C-25
 VIBRATION: PER MIL-C-25
 LEAD PULL: 5 LBS. AXIALLY - 1 MINUTE
 LEADS: SOLID, TINNED COPPER
 CAPACITANCE CHANGE (MAX.):
 AT -55°C -8%
 AT +85°C +5%
 AT +125°C +18%



TMC PART NUMBER SHALL BE IN THE FOLLOWING FORM:



LIST OF MATERIAL

REQ'D.	ITEM	PART NUMBER	DESCRIPTION	SYMBOL																	
			THE TECHNICAL MATERIEL CORP. MAMARONECK, NEW YORK																		
			CAPACITOR, FIXED, PLASTIC																		
<table border="1" style="width:100%"> <tr> <td style="width:40%">DRAWN <i>AUSTIN</i></td> <td>DATE</td> <td>6-25-65</td> <td>FINAL APPROVAL</td> <td>DATE</td> <td>6/30/65</td> </tr> <tr> <td>CHECKED <i>[Signature]</i></td> <td>DATE</td> <td>6-28-65</td> <td rowspan="2">ELECT. DES. <i>[Signature]</i></td> <td rowspan="2">MECH. DES.</td> <td rowspan="2">SHEET</td> </tr> <tr> <td></td> <td></td> <td></td> <td></td> <td></td> </tr> </table>					DRAWN <i>AUSTIN</i>	DATE	6-25-65	FINAL APPROVAL	DATE	6/30/65	CHECKED <i>[Signature]</i>	DATE	6-28-65	ELECT. DES. <i>[Signature]</i>	MECH. DES.	SHEET					
DRAWN <i>AUSTIN</i>	DATE	6-25-65	FINAL APPROVAL	DATE	6/30/65																
CHECKED <i>[Signature]</i>	DATE	6-28-65	ELECT. DES. <i>[Signature]</i>	MECH. DES.	SHEET																
UNLESS OTHERWISE SPECIFIED DIMENSIONS ARE IN INCHES AND INCLUDE CHEMICALLY APPLIED OR PLATED FINISHES			FRACTIONS ± 1/64																		
DECIMALS .X ± .05 .XX ± .01 .XXX ± .005			TOLERANCES																		

NOTES

THE CONTENTS OF THIS DRAWING ARE THE EXCLUSIVE PROPERTY OF THE TECHNICAL MATERIEL CORP. ITS UNAUTHORIZED USE OR REPRODUCTION IN WHOLE OR IN PART IS STRICTLY FORBIDDEN.

QTY./UNIT		TSTE-10K	ASSEMBLY NO.	AZ105
SCALE		MODEL USED ON	CODE	S401-112 (68)
				C

CODE 2 = 200 VOLTS DC

BASIC TMC P/N	MFGR P/N	CAP MFD	CASE SIZE A	B	C
CX117-1	AB2-504	0.5	1-1/8	1	13/16
-2	AB2-105	1.0	1-1/8	1	13/16
-3	AB2-205	2.0	1-1/8	1	13/16
-4	AB2-405	4.0	1-3/4	1	3/4
-5	AB2-505	5.0	1-3/4	1	3/4
-6	AB2-605	6.0	1-3/4	1-1/4	7/8
-7	AB2-805	8.0	1-3/4	1-1/4	7/8
-8	AB2-106	10.0	2	1-3/4	7/8
-9	AB2-126	12.0	2	1-3/4	7/8
-10	AB2-156	15.0	2	1-3/4	7/8
-11	AB2-206	20.0	2	2	1-1/8
-12	AB2-306	30.0	2	2	1-1/4

CODE 3 = 300 VOLTS DC

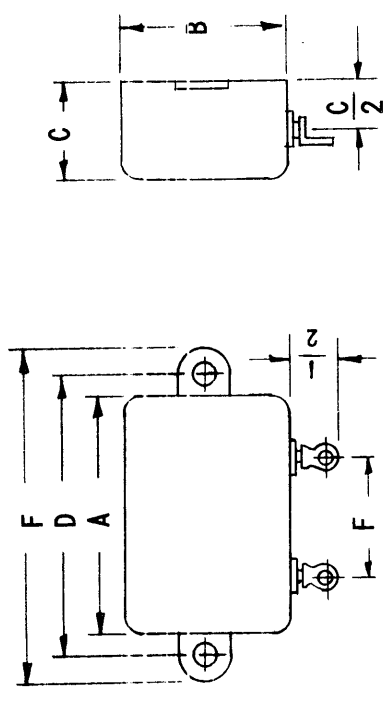
CX117-13	AB3-504	0.5	1-1/8	1	13/16
-14	AB3-105	1.0	1-1/8	1	13/16
-15	AB3-205	2.0	1-3/4	1	3/4
-16	AB3-405	4.0	1-3/4	1-1/4	7/8
-17	AB3-505	5.0	2	1-3/4	7/8
-18	AB3-605	6.0	2	1-3/4	7/8
-19	AB3-805	8.0	2	1-3/4	7/8
-20	AB3-106	10.0	2	2	1-1/8
-21	AB3-126	12.0	2	2	1-1/8
-22	AB3-156	15.0	2	2	1-1/4

CODE 4 = 400 VOLTS DC

CX117-23	AB4-104	0.1	1-1/8	1	13/16
-24	AB4-254	0.25	1-1/8	1	13/16
-25	AB4-504	0.5	1-1/8	1	13/16
-26	AB4-105	1.0	1-3/4	1	3/4
-27	AB4-205	2.0	1-3/4	1-1/4	7/8
-28	AB4-405	4.0	2	1-3/4	7/8
-29	AB4-505	5.0	2	2	1-1/8
-30	AB4-605	6.0	2	2	1-1/8
-31	AB4-805	8.0	2	2	1-1/4

CODE 6 = 600 VOLTS DC

CX117-32	AB6-503	0.05	1-1/8	1	13/16
-33	AB6-104	0.10	1-1/8	1	13/16
-34	AB6-254	0.25	1-1/8	1	13/16
-35	AB6-504	0.50	1-3/4	1-1/4	7/8
-36	AB6-105	1.0	2	1-3/4	7/8
-37	AB6-205	2.0	2	2	1-1/8



A	B	D	E	F
1-1/8	1	1-7/16	1-3/4	1/2
1-3/4	1	2-1/8	2-1/2	1-1/16
1-3/4	1-1/4	2-1/8	2-1/2	1-1/16
2	1-3/4	2-3/8	2-3/4	1-1/16
2	2	2-3/8	2-3/4	1-1/16

CASE TERMINAL MTG CHART

CODE	TYPE
X	SIDE MTD TERMINALS
Y	TOP MTD TERMINALS
Z	BOTTOM TERMINALS

TOLERANCE CHART

CODE	TOL
1	1%
2	2%
5	5%
10	10%
20	20% (STAND)

REVISIONS

ZONE	LTR	DESCRIPTION	DATE	E.M.N.NO	DRAFT	CHKD	APPD
	X	EXPERIMENTAL RELEASE	8/5/68		C.V.		
	Ø	ORIG. RELEASE FOR PROD	10/28/68		R.G.		

CONTAINER: IS HOT-TINNED STEEL OR TERNE-PLATE, DESIGNED TO WITHSTAND THE 100 HOUR SALT SPRAY TEST OF MIL-QQ-151A

TERMINALS: ARE SOLDER LUGS IN A SOLDERED COMPRESSION STEEL BUSHING

TEMPERATURE RANGE: 90°C TO 125°C AT FULL NAMEPLATE RATING EXCEPT ALL CAPACITORS GREATER THAN 10mfd. WITH A 200 VOLT NAMEPLATE RATING SHOULD BE DE-RATED TO 150 VOLTS IN THE TEMPERATURE RANGE OF 100°C TO 125°C

POWER FACTOR: IS LESS THAN 1% AT 25°C. POWER FACTOR WILL BE MEASURED AT 1000 CYCLES PER SECOND FOR 1mfd OR LESS CAPACITANCE AND AT 60 CPS FOR NOMINAL VALUES GREATER THAN 1mfd

TMC PART NUMBER SHALL APPEAR IN THE FOLLOWING FORM:

CX 117 - 12 - 2 X 20

BASIC P/N

VOLTAGE CODE (SEE CHART)

TERMINAL MTG CODE (SEE CHART)

TOLERANCE CODE (SEE CHART)

REQ'D ITEM	PART NUMBER	DESCRIPTION	SYM.
S. DeMARCO			
FINAL APPROVAL	DATE 10/28/68	LIST OF MATERIAL	
MECH. DES.	DATE 10/28/68	THE TECHNICAL MATERIEL CORP.	
ELECT. DES.	DATE 10/28/68	MAMARONECK, NEW YORK	
CHECKED	DATE 10/28/68	CAPACITOR, FIXED, MYLAR METALIZED	
DRAWN	DATE 10/28/68	SIZE B CODE IDENT. NO. 82679 DWG NO. CX 117	
SCALE		SHEET OF	

UNLESS OTHERWISE SPECIFIED DIMENSIONS ARE IN INCHES AND INCLUDE CHEMICALLY APPLIED OR PLATED FINISHES

DECIMALS: .X ± .05 .XX ± .01 .XXX ± .005

FRACTIONS: 1/64 ANGLES: 0°-30'

MATERIAL FINISH

RTTD-4

MODEL USED ON

ASSY NO.

APPLICATION

CODE S401-55

NOTICE TO PERSON RECEIVING THIS DRAWING

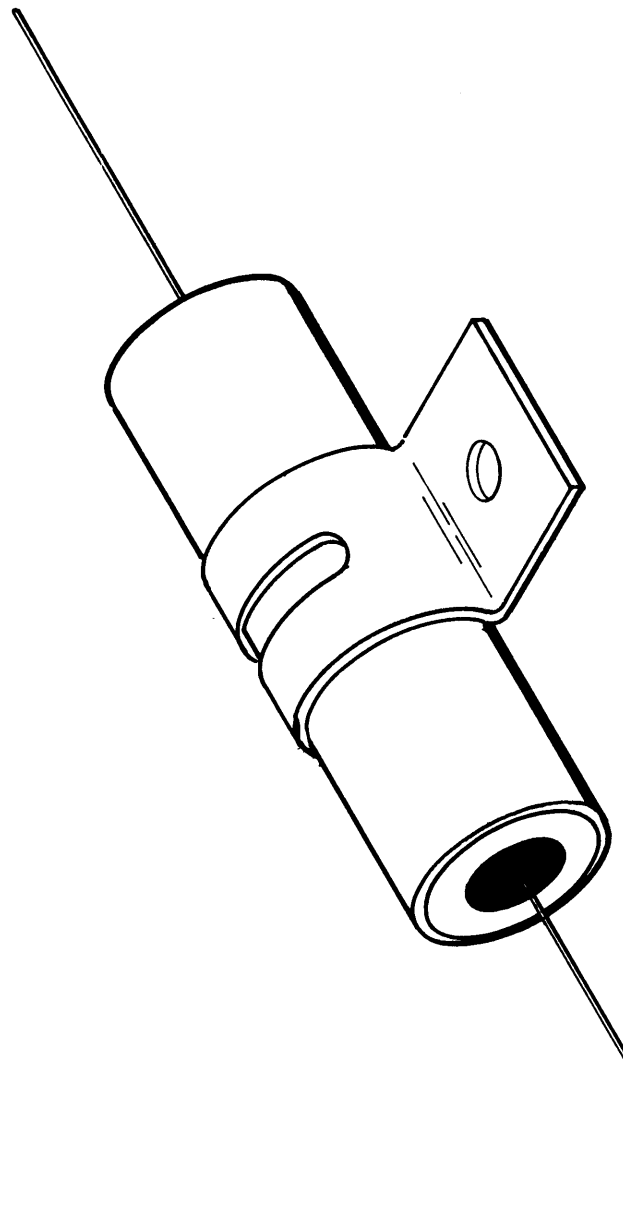
THE TECHNICAL MATERIEL CORPORATION claims proprietary right in the material disclosed hereon. This drawing is issued in confidence for engineering information only and may not be reproduced or used to manufacture anything shown hereon without permission from THE TECHNICAL MATERIEL CORPORATION to the user. This drawing is loaned for mutual assistance and is subject to recall at any time.

5 4 3 2 1

D C B A

SPRAGUE NO. I2IP5050IR5T13
 50uf 150 VDC

OBSOLETE



REVISIONS				
ZONE	LTR	DESCRIPTION	DATE	E.M.N.NO
	Ø	ORIGINAL RELEASE	11/07	GDL

CHKD	APPD
	X

UNLESS OTHERWISE SPECIFIED
 DIMENSIONS ARE IN INCHES
 AND INCLUDE CHEMICALLY APPLIED
 OR PLATED FINISHES

DECIMALS ± .05 TOLS.
 FRACTIONS 1/64 ANGLES 0°-30'

MATERIAL

FINISH

QTY / UNIT	MODEL USED ON	ASSY NO.
1	AX5130	
APPLICATION		
CODE		

NOTICE TO PERSONS RECEIVING THIS DRAWING
 THE TECHNICAL MATERIEL CORPORATION claims proprietary right in the material
 disclosed hereon. This drawing is issued in confidence for engineering information only
 and may not be reproduced or used to manufacture anything shown hereon without
 permission from THE TECHNICAL MATERIEL CORPORATION to the user. This drawing is
 loaned for mutual assistance and is subject to recall at any time.

REQ'D ITEM	PART NUMBER	DESCRIPTION	SYM.
LIST OF MATERIAL			

THE TECHNICAL MATERIEL CORP.
 MAMARONECK, NEW YORK

CAPACITOR, METALLIZED
 PAPER - HERMETICALLY SLD.

FINAL APPROVAL DATE
 MECH. DES.

ELECT. DES. DATE

CHECKED DATE

DRAWN DATE
 EVANGELIST 9/27/77

SIZE B CODE IDENT. NO. 82679 DWG NO. CX131

SCALE MTS SHEET 1 OF 1

T M C PART NO.	DIMENSION - INCHES		CAPACITANCE RANGE - PF						
	L	W	T MAX	NPO		BX OR X7R		Z5U	
CX132-	.120 ± .015	.100 ± .015	.060	MIN CAP	200V MAX	500V MAX	100V MAX	50V MAX	50V MAX
				470	3,900	18,000	100,000	5,600	22,000
				1	1,000	2,200	470	5,600	22,000

EMN NO.	DRAFT	CHKD	ZONE	LTR	DESCRIPTION	DATE	APPROVED
	G.D.L.			0	ORIGINAL RELEASE FOR PRODUCTION	1-25-77	*

REVISIONS

CX132- C 471 K I G A H

T M C PART NO

SPECIFICATION
 C = COMMERCIAL
 E = KEMET ESTABLISHED RELIABILITY
 P = MIL-C-55681A

CAPACITANCE CODE
 EXPRESSED IN PICO FARADS
 FIRST TWO DIGIT-SIGNIFICANT FIGS.
 THIRD DIGIT NO. OF ZEROS. (USE 9 FOR 1.0)
 THRU 9.9 pF. EX. 2.2 pF - 229

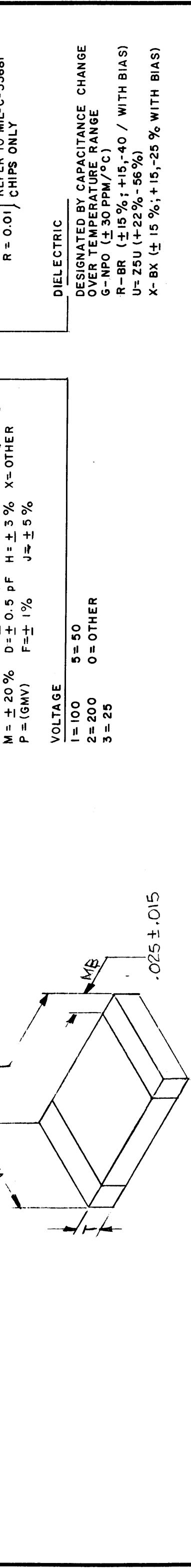
CAPACITANCE TOLERANCE
 K = ± 10% C = ± 0.25 pF G = + 2% Z = 80% - 20%
 M = ± 20% D = ± 0.5 pF H = ± 3% X = OTHER
 P = (GMV) F = ± 1% J = ± 5%

VOLTAGE
 1 = 100 5 = 50
 2 = 200 0 = OTHER
 3 = 25

FAILURE RATE LEVEL (% 1000 HRS)
 A = STANDARD FOR "C" & "E" SPECS.
 M = 1.0 M.P. & R FAILURE RATES
 P = 0.1 REFER TO MIL-C-55681
 R = 0.01 CHIPS ONLY

LEAD METALLIZING
 H = SOLDER GUARD (STANDARD TINNED)
 T = SILVER G = GOLD PLATED
 V = PALLADIUM SILVER (STANDARD-UNTINNED)
 W = PALLADIUM GOLD
 Y = PALLADIUM SILVER (SOLDER COATED)
 Z = OTHER

DIELECTRIC
 DESIGNATED BY CAPACITANCE CHANGE
 OVER TEMPERATURE RANGE
 G-NPO (± 30 PPM/°C)
 R-BR (± 15%; +15, -40 / WITH BIAS)
 U-Z5U (+22% - 56%)
 X-BX (± 15%; +15, -25 % WITH BIAS)



REQ'D ITEM	PART NUMBER	DESCRIPTION	SYM.
LIST OF MATERIAL			
THE TECHNICAL MATERIEL CORP. MAMARONECK, NEW YORK			
CAPACITOR FXD, CER CHIP			
SIZE	CODE IDENT. NO.	DWG NO.	ISSUE
B	82679	CX132	0
SCALE			SHEET OF
			1

UNLESS OTHERWISE SPECIFIED DIMENSIONS ARE IN INCHES AND INCLUDE CHEMICALLY APPLIED OR PLATED FINISHES	FINAL APPROVAL DATE 9/25/77
MECH. DES.	DATE
ELECT. DES.	DATE
CHECKED	DATE
DRAWN G.D.L.	DATE 9-2-76

DECIMALS	FRACTIONS
.X ± .05	1/64
.XX ± .01	TOLS. ANGLES
.XXX ± .005	0°-30'
MATERIAL	
FINISH	

QTY / UNIT	MODEL USED ON	ASSY NO.
	APPLICATION	
CODE		
<p>NOTICE TO PERSONS RECEIVING THIS DRAWING</p> <p>THE TECHNICAL MATERIEL CORPORATION claims proprietary right in the material disclosed hereon. This drawing is issued in confidence for engineering information only and may not be reproduced or used to manufacture anything shown hereon without permission from THE TECHNICAL MATERIEL CORPORATION to the user. This drawing is loaned for mutual assistance and is subject to recall at any time.</p>		