

# STANDARD DRAWING

EY-100

IF IT IS FOUND DESIRABLE TO CHANGE ANY TOLERANCE OR OTHER DETAIL SPECIFIED ON THIS DRAWING NOTIFY THE PURCHASER PROMPTLY.

MAXIMUM ALLOWABLE TOLERANCES HAVE BEEN DETERMINED AND DEVIATIONS WILL BE CAUSE FOR REJECTION. REMOVE ALL BURRS AND SHARP EDGES

RELEASED

USED ON

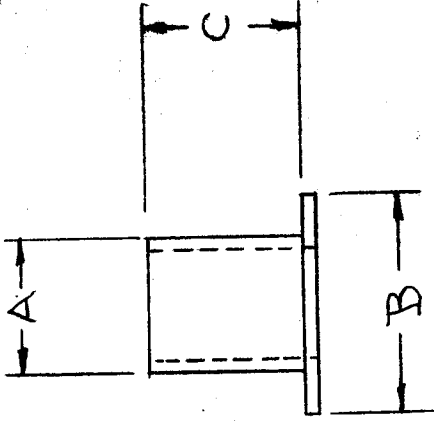
MODEL

PROJECT NO.

ASSY. NO.

ZINC NO.	CAT. NO.	A	B	C	METAL THK.	MAT.	FINISH
EY-100-1	A-1527	.121	.218	.157	.016	BRASS	NICKEL
EY-100-2	A-1526	.121	.218	.214	.016	BRASS	NICKEL
EY-100-3	A-740	.185	.285	.102	.009	BRASS	NICKEL
EY-100-4	A-1523	.062	.115	.171	.008	BRASS	NICKEL
EY-100-5	A-1690	.062	.115	.158	.008	BRASS	NONE
EY-100-6	A-791	.495	.595	.115	.018	BRASS	NICKEL
EY-100-7	A-1472	.138	.180	.258	.010	BRASS	NICKEL
EY-100-8	A-1225	.127	.240	.115	.010	BRASS	NICKEL

(CANADIAN SPECIAL)



DEC 30 1963

DEC 1963

DEC 1963

REP: EDWIN B. STIMPSON CO.

REQ. ITEM	PART NO.	DESCRIPTION	SYMBOL
		THE TECHNICAL MATERIEL CORP.	
		MAMARONECK, NEW YORK	
		<b>RIVET, FLAT FLANGE</b>	
		DRAWN	
		G.T.O	
		ELEC. DES. APP.	
		C.D.D. 2-26-53	
		G.T.O	
		CHECKED	
		C.D.D. 2-26-53	
		G.T.O	
		FINAL APPROVAL	
		EY-100	

ISSUE ITEM	CHANGED FROM	DATE	CN. NO.	DRAFTS CHECKER	ENG. APP.
G 1	EY-100-8 ADDED	3/22/53	1156	A.M.	
F 1	EY-100-7 ADDED	3/22/53	8565		
E 1	EY-100-6 ADDED	3/22/53	6		
D 5	EY-100-5 ADDED	3/22/53	5		
C 4	EY-100-4 ADDED	7/26/53	4		
B 3	REDRAWN	2-26-53	3		
TOLERANCES					
SCALE					
DRILL, PUNCH, COMMERCIAL STOCK SIZES AND MANUFACTURERS TOLERANCES ARE NOT INCLUDED.					
ALL OTHERS	DEC. DIM. ±				
	FRAC. DIM. ±				
	ANGULAR DIM. ±				

EY-100

# STANDARD DRAWING

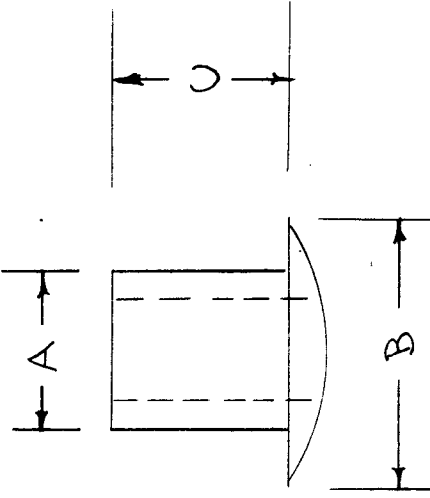
EY-101 C

IF IT IS FOUND DESIRABLE TO CHANGE ANY TOLERANCE OR OTHER DETAIL SPECIFIED ON THIS DRAWING NOTIFY THE PURCHASER PROMPTLY.

MAXIMUM ALLOWABLE TOLERANCES HAVE BEEN DETERMINED AND DEVIATIONS WILL BE CAUSE FOR REJECTION. REMOVE ALL BURRS AND SHARP EDGES

USED ON  
 MODEL PROJECT NO. ASS'Y. NO. DATE

T.M.C. NO.	CAT. NO.	A	B	C	METAL THICK.	MAT.	FINISH
EY-101-1	A-236	.097	.170	.187	.013	BRASS	NICKEL
EY-101-2	A-737	.185	.285	.182	.013	BRASS	NONE
EY-101-3	A-2161	.089	.150	.156	.009	BRASS	NONE
EY-101-4	-	-	-	-	-	-	-
EY-101-5	A-2301	.064	.138	.140	.0065	BRASS	NONE
EY-101-6	A-2013	.157	.235	.102	.010	BRASS	NONE



REF: EDWIN B. STIMPSON CO.

REQ. ITEM	PART NO.	DESCRIPTION	SYMBOL
		THE TECHNICAL MATERIEL CORP. MAMARONECK, NEW YORK	
		EYELET, ROLLED FLANGE	
		SEE TABLE	
		MATERIAL	
		WEIGHT PER PC.	
		TYPE & TEMPER	
		HEAT TREAT. SPEC.	
		FINISH & SPEC. NO.	
		DRAWN	
		CHECKED	
		ELEC. DES. APP.	
		MECH. DES. APP.	
		FINAL APPROVAL	
			EY-101 C

# STANDARD

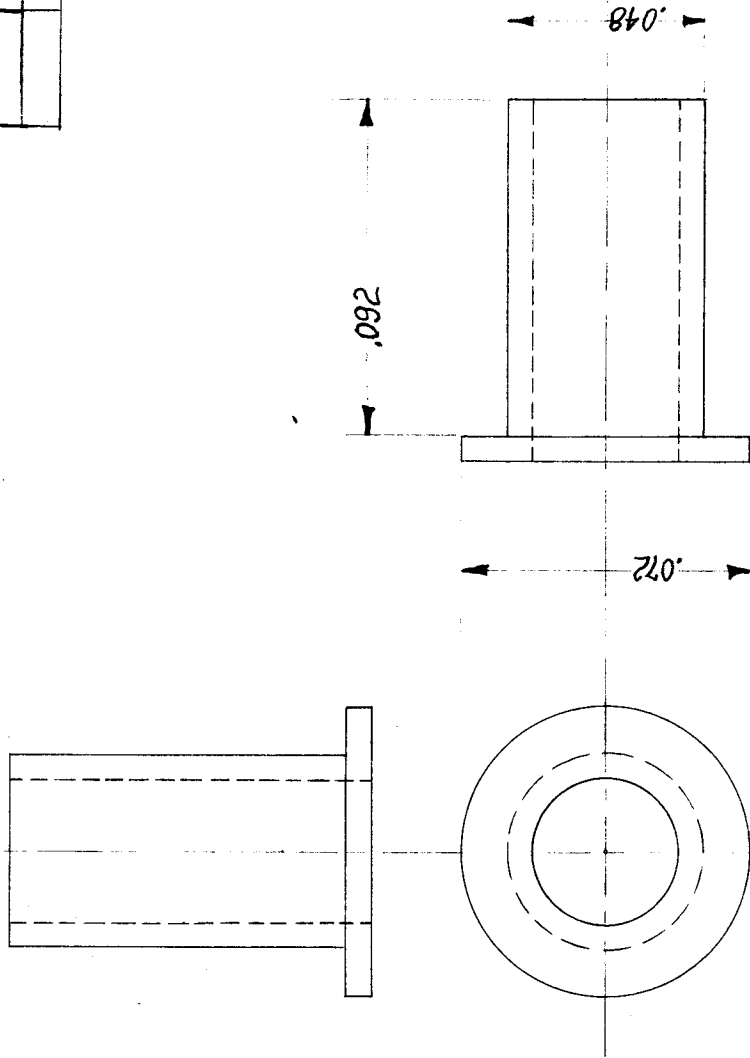
EY-103 A

USED ON	
MODEL	PROJECT NO.
VOX-24	101
PMB-2	285
RTF	

QTY PER UNIT	ASSY. NO.	DATE
	A-425	8/31/53
		8/18/54
		2-3-56

IF IT IS FOUND DESIRABLE TO CHANGE ANY TOLERANCE OR OTHER DETAIL SPECIFIED ON THIS DRAWING NOTIFY THE PURCHASER PROMPTLY.

MAXIMUM ALLOWABLE TOLERANCES HAVE BEEN DETERMINED AND DEVIATIONS WILL BE CAUSE FOR REJECTION. REMOVE ALL BURRS AND SHARP EDGES



REQ. ITEM	PART NO.	DESCRIPTION	SYMBOL
		THE TECHNICAL MATERIEL CORP. MAMARONECK, NEW YORK	
		EYELET, STIMPSON	
		WEIGHT PER PC.	
		TYPE & TEMPER	
		HEAT TREAT. SPEC.	
		NICKEL PLATE	
		FINISH & SPEC. NO.	

REQ. ITEM	PART NO.	DESCRIPTION	SYMBOL
		THE TECHNICAL MATERIEL CORP. MAMARONECK, NEW YORK	
		EYELET, STIMPSON	
		WEIGHT PER PC.	
		TYPE & TEMPER	
		HEAT TREAT. SPEC.	
		NICKEL PLATE	
		FINISH & SPEC. NO.	

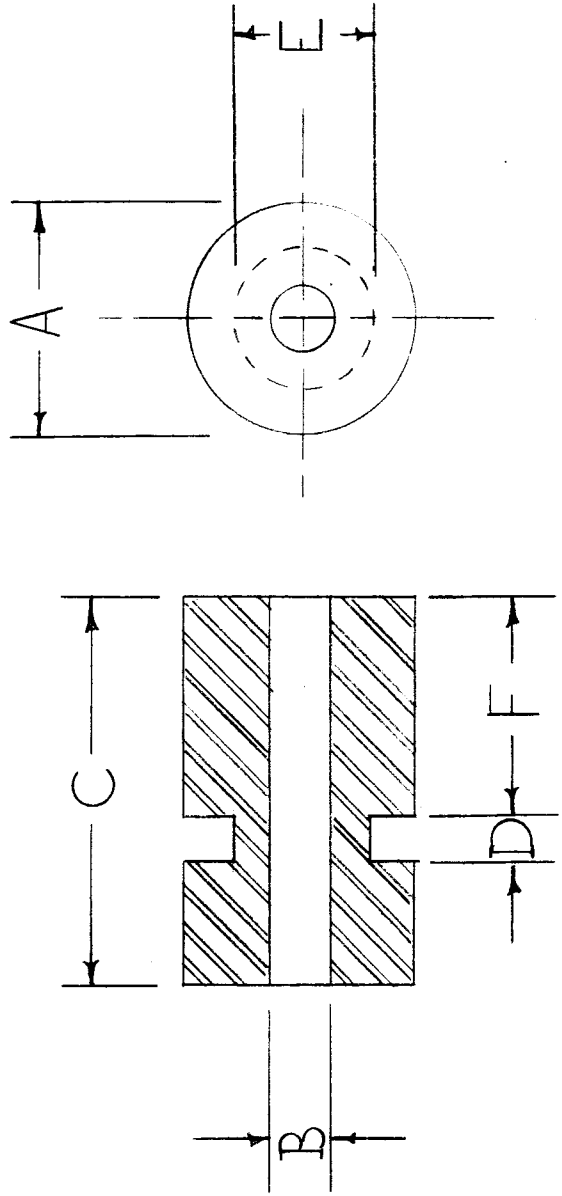
ISSUE	ITEM	CHANGED FROM	DATE	CN. NO.	DRAFTS CHECKER	ENG. APP.
A			12.6.11	2.R.	<i>[Signature]</i>	

TOLERANCES	
DEC. DIM. ±	DRILL, PUNCH, COMMERCIAL STOCK
FRAC. DIM. ±	SIZES AND MANUFACTURERS
OTHERS	TOLERANCES ARE NOT INCLUDED.
SCALE 20X 5401-325(A-1633)	
DRAWN F.M. 8-31-53	
CHECKED <i>[Signature]</i>	
ELEC. DES. APP. A J J	
MECH. DES. APP. <i>[Signature]</i>	
FINAL APPROVAL EY-103 A	

IF IT IS FOUND DESIRABLE TO CHANGE ANY TOLERANCE OR OTHER DETAIL SPECIFIED ON THIS DRAWING NOTIFY THE PURCHASER PROMPTLY.

MAXIMUM ALLOWABLE TOLERANCES HAVE BEEN DETERMINED AND DEVIATIONS WILL BE CAUSE FOR REJECTION. REMOVE ALL BURRS AND SHARP EDGES

T.M.C. NO.	CAT. NO.	A	B	C	D	E	F
EY-104 -1	GM-203	9/16	1/4	9/32	1/16	3/8	5/32
-2	GM-661	3/8	9/64	3/8	1/16	1/4	1/4
-3	GM-2033	11/16	5/16	27/64	5/64	1/2	1/4



SPECIAL CHARACTERISTIC - MUST NOT DISCOLOR ALUMINUM; EITHER CADMIUM PLATED OR CAUSTIC DIPPED.

REF: MILLER PRODUCTS CO. INC.

EY-104

STANDARD DRAWING

REQ. PER UNIT	MODEL	PROJECT NO.	ASSY. NO.	DATE

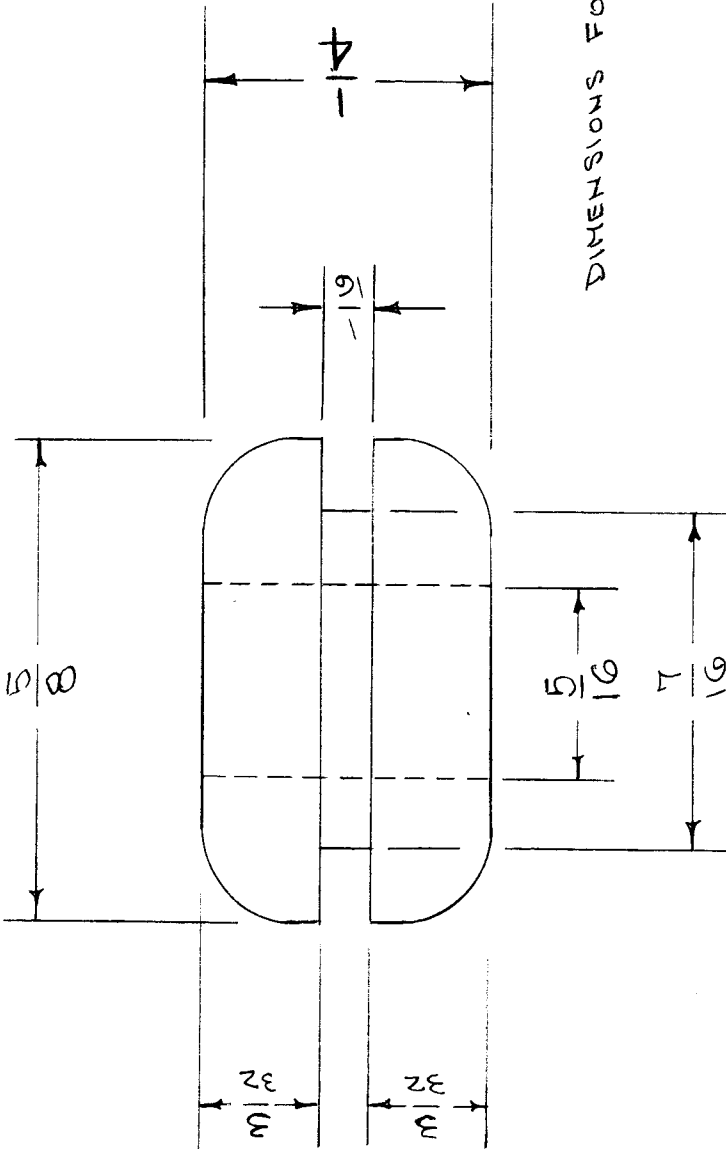
USED ON

REQ. ITEM	PART NO.	DESCRIPTION	SYMBOL
		THE TECHNICAL MATERIEL CORP.	
		MAMARONECK, NEW YORK	
		GROHMET, RUBBER	
		CDD 3/31/55	THH
		DRAWN	ELEC. DES. APP.
		MECH. DES. APP.	
		G.T.O	
		CHECKED	FINAL APPROVAL
			EY-104

STOCK SIZE	WEIGHT PER PC.	TYPE & TEMPER	HEAT TREAT. SPEC.	FINISH & SPEC. NO.
LIVE RUBBER	# A5 DUROMETER			
TOLERANCES				
DEC. DIM. ±	DRILL, PUNCH, COMMERCIAL STOCK SIZES AND MANUFACTURERS TOLERANCES ARE NOT INCLUDED.			
FRAC. DIM. ±				
ANGULAR DIM. ±				

IF IT IS FOUND DESIRABLE TO CHANGE ANY TOLERANCE OR OTHER DETAIL SPECIFIED ON THIS DRAWING NOTIFY THE PURCHASER PROMPTLY.

MAXIMUM ALLOWABLE TOLERANCES HAVE BEEN DETERMINED AND DEVIATIONS WILL BE CAUSE FOR REJECTION. REMOVE ALL BURRS AND SHARP EDGES



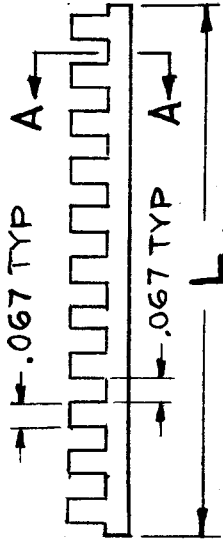
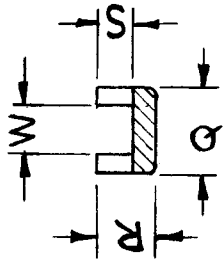
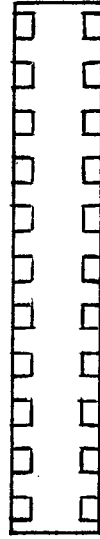
DIMENSIONS FOR REFERENCE ONLY.

REF: THE MILLER RUBBER CO. CAT. NO. GB 2252

REQ. ITEM		PART NO.		DESCRIPTION		SYMBOL	
A 1				THE TECHNICAL MATERIEL CORP.			
		STOCK SIZE		MAMARONECK, NEW YORK			
		MATERIAL		GROMMET, RUBBER			
		WEIGHT PER PC.					
ISSUE ITEM		CHANGED FROM		DATE		CN. NO. DRAFTS CHECKER ENG. APP.	
A 1		SUPPLIER WAS THE CANFIELD RUBBER CO. CAT. NO. 1972-DIM. CHG		5/23/58		1 G.M. H.R. G.W.	
REQ. PER UNIT		MODEL		PROJECT NO.		ASS'Y. NO.	
2		GPR (S)(R)		257			
USED ON		DATE		MECH. DES. APP.		MECH. DES. APP.	
		5-26-58		P.L.K.		G.T.O	
HEAT TREAT. SPEC.		CHECKED		ELEC. DES. APP.		FINAL APPROVAL	
						EY-105 A	
FINISH & SPEC. NO.		FINISH & SPEC. NO.		FINISH & SPEC. NO.		FINISH & SPEC. NO.	

# STANDARD DRAWING

REQ. PER UNIT		MODEL		USED ON		DATE					
PS-5		PS-5		EY-107		EY-107					
TMC PART NO.	MFRS. PART NO.	MATERIAL (SEE) (SPEC 1)	COLOR (SEE) (NOTE 2)	DIMENSIONS				FOR MAT'L. THK.	FOR APPROX. HOLE DIA.	MILITARY STANDARD EQUIV.	
				W	Q	R	S				L(SEE NOTE 3)
EY-107-1	G51H-C	NYLON	NATURAL (WHITE)	.131	.220	.155	.100	2-7/8	.085 to .128	7/8	MS-21266-3N
EY-107-2	G51H-B	NYLON	NATURAL (WHITE)	.090	.175	.155	.100	2-1/2	.052 to .085	7/8	MS-21266-3N



## SECT A-A

- NOTES:**
- THIS TYPE OF GROMMET SHOULD BE USED FOR HOLE SIZES OVER 1/2 DIA. & FOR ODD-SHAPED HOLES.
  - NYLON COLORS AVAILABLE:  
NATURAL (WHITE), RED, BLACK, BLUE.
  - LENGTH IN CHART INDICATES CUT LENGTH AS USED IN A PARTICULAR APPLICATION. THE STANDARD PURCHASING LENGTH IS 12-3/4 PIECES.

### SPECIFICATIONS:

- MATERIAL: (AS SPECIFIED IN CHART)  
A. NYLON: PER MIL-M-20693A, TYPE I.
- TEMP. LIMITS: UP TO 275°F.
- GROMMETS SHALL MEET THE REQUIREMENTS OF MIL-G-22529 THE MILITARY STANDARDS AS LISTED IN CHART

REQ. ITEM	PART NO.	DESCRIPTION	SYMBOL
		THE TECHNICAL MATERIEL CORP. MAMARONECK, NEW YORK	
		SEE SPECS	
		MATERIAL	
		TYPE & TEMPER	
		HEAT TREAT. SPEC.	
		SEE NOTZ 2	
		FINISH & SPEC. NO.	
		DATE	
		SCALE	
		CH. NO.	
		DRAFTS	
		CHECKER	
		ENG. APP.	
		NONE	
		CODE	
		S401-240	
		UNLESS OTHERWISE SPECIFIED DIMENSIONS ARE IN INCHES AND INCLUDE CHEMICALLY APPLIED OR PLATED FINISHES	
		FRACTIONS ± 1/64	
		ANGLES ± 0° 30'	
		DECIMALS .X ± .05	
		.XX ± .01	
		.XXX ± .005	
		TOLERANCES	
		DRAWN	
		CHECKED	
		FINAL APPROVAL	
		ELEC. DES. APP.	
		MCH. DES. APP.	
		GROMMET, PLASTIC, CATERPILLAR	
		10/7/63	
		10/8/63	
		EY-107	

EY 10001 A

# STANDARD DRAWING

IF IT IS FOUND DESIRABLE TO CHANGE ANY TOLERANCE OR OTHER DETAIL SPECIFIED ON THIS DRAWING NOTIFY THE PURCHASER PROMPTLY.

USED ON

DATE

ASS'Y. NO.

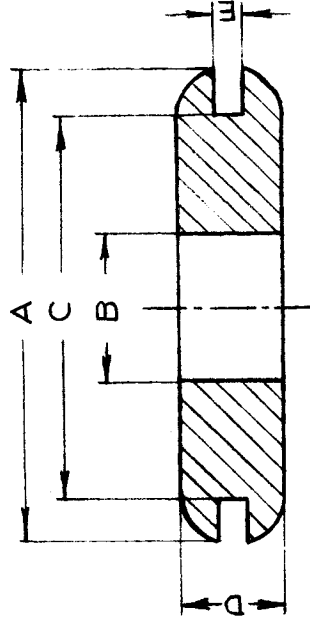
PROJECT NO.

MODEL

FEB 24/60

MAXIMUM ALLOWABLE TOLERANCES HAVE BEEN DETERMINED AND DEVIATIONS WILL BE CAUSE FOR REJECTION. REMOVE ALL BURRS AND SHARP EDGES

TMC NO.	MFR CAT NO.	A	B	C	D	E
EY 10001-1	4177	9/16	9/32	3/8	7/32	3/64



SPAE - NAUR PRODUCTS LTD.

REQ. ITEM		PART NO.		DESCRIPTION		SYMBOL	
				TMC (Canada) LIMITED		ONTARIO	
STOCK SIZE				GROMMET			
MATERIAL		WEIGHT PER PC.					
TYPE & TEMPER				MK		DRAWN	
HEAT TREAT. SPEC.				ELEC. DES. APP. <i>[Signature]</i>		MECH. DES. APP. <i>[Signature]</i>	
FINISH & SPEC. NO.				CHECKED		FINAL APPROVAL	
				EY 10001		A	

ISSUE	ITEM	CHANGED FROM	DATE	CN. NO.	DRAFTS	CHECKER	ENG. APP.
A		DELE DASH FR P/N DINST "JP E" WERE 5/16-7/16-3/16-1/16	12/1/66	17348	RME	<i>[Signature]</i>	<i>[Signature]</i>

TOLERANCES		SCALE	DIMENSIONS IN INCHES
DEC. DIM. ±			UNLESS OTHERWISE SPECIFIED
FRAC. DIM. ±			DRILL, PUNCH, COMMERCIAL STOCK
ANGULAR DIM. ±			SIZES AND MANUFACTURERS
			TOLERANCES ARE NOT INCLUDED.

IF IT IS FOUND DESIRABLE TO CHANGE ANY TOLERANCE OR OTHER DETAIL SPECIFIED ON THIS DRAWING NOTIFY THE PURCHASER PROMPTLY.

MAXIMUM ALLOWABLE TOLERANCES HAVE BEEN DETERMINED AND DEVIATIONS WILL BE CAUSE FOR REJECTION. REMOVE ALL BURRS AND SHARP EDGES

# STANDARD DRAWING

EY10002 B

USED ON

PROJECT NO. ASSY. NO. DATE

MODEL

DEC.1/59

*SUPERSEDED BY	TMC PT. NO*	MFR. PT. NO.	THK. OF METAL
	EY10002-1	G51H-A	.015-.052 IN.
EY-107-2	EY10002-2	G51H-B	.052-.085 IN
EY-107-1.	EY10002-3	G51H-C	.085-.128 IN
	EY10002-4	G51H-D	.128-.192 IN
	EY10002-5	G51H-E	.192-.225 IN.
	EY10002-6	G51H-F	.225-.316 IN.

NOTICE TO PERSONS RECEIVING THIS DRAWING

THE TECHNICAL MATERIEL CORPORATION claims proprietary right in the material disclosed hereon. This drawing is issued in confidence for engineering information only and may not be reproduced or used to manufacture anything shown hereon without permission from THE TECHNICAL MATERIEL CORPORATION to the user. This drawing is loaned for mutual assistance and is subject to recall at any time.

Property of:

THE TECHNICAL MATERIEL CORPORATION  
MAMARONECK, NEW YORK

ISSUE ITEM	CHANGED FROM	DATE	CN. NO.	DRAFTS CHECKER	ENG. APP.
B	EY-107-2 WAS EY-107-1 EY-107-1 WAS EY-107-2	7-22-46	16623	RME	<i>[Signature]</i>
TOLERANCES					
SCALE					

ALL OTHERS  
DEC. DIM. ± —  
FRAC. DIM. ± —  
ANGULAR DIM. ± —

DRILL, PUNCH, COMMERCIAL STOCK SIZES AND MANUFACTURERS TOLERANCES ARE NOT INCLUDED.

REF: NORTHERN NYLON MOLDING CORPORATION OF CANADA LTD.

REQ. ITEM	PART NO.	DESCRIPTION	SYMBOL
		TMC (Canada) LIMITED OTTAWA	
		NYLON "CATERPILLAR"	
		GROMMET	
		JPC	
		DRAWN <i>[Signature]</i>	ELEC. DES. APP. <i>[Signature]</i>
		CHECKED <i>[Signature]</i>	MECH. DES. APP. <i>[Signature]</i>
		HEAT TREAT. SPEC.	FINAL APPROVAL
		FINISH & SPEC. NO.	EY10002 B





EY 10006

ISSUE	ITEM	CHANGED FROM	DATE	CN. NO.	DRAFTS	CHECKER	ENG. APP.	REQ.	ITEM	PART NO.	DESCRIPTION	SYMBOL
φ		REL. TO PROD.	9/4/68		S.B.	<i>[Signature]</i>	<i>[Signature]</i>					

TMC PART #	MFGR. PART #	DIMENSIONS		D	
EY10006-1	A 1280	A	B		C
		.062	.115		.110

# STANDARD DRAWING

MFGR. # S10045-67

MODEL	PROJECT NO.	ASS'Y. NO.	DATE
			9/4/68

USED ON	
MAXIMUM ALLOWABLE TOLERANCES HAVE BEEN DETERMINED AND DEVIATIONS WILL BE CAUSE FOR REJECTION. REMOVE ALL BURRS AND SHARP EDGES	IF IT IS FOUND DESIRABLE TO CHANGE ANY TOLERANCE OR OTHER DETAIL SPECIFIED ON THIS DRAWING NOTIFY THE PURCHASER PROMPTLY.

TOLERANCES	
DEC. DIM. ±	DIMENSIONS IN INCHES
FRAC. DIM. ±	UNLESS OTHERWISE SPECIFIED
ANGULAR DIM. ±	DRILL, PUNCH, COMMERCIAL STOCK SIZES AND MANUFACTURERS TOLERANCES ARE NOT INCLUDED.

STOCK SIZE	WEIGHT PER PC.
BRASS	
MATERIAL	
TYPE & TEMPER	
HEAT TREAT. SPEC.	
FINISH & SPEC. NO.	

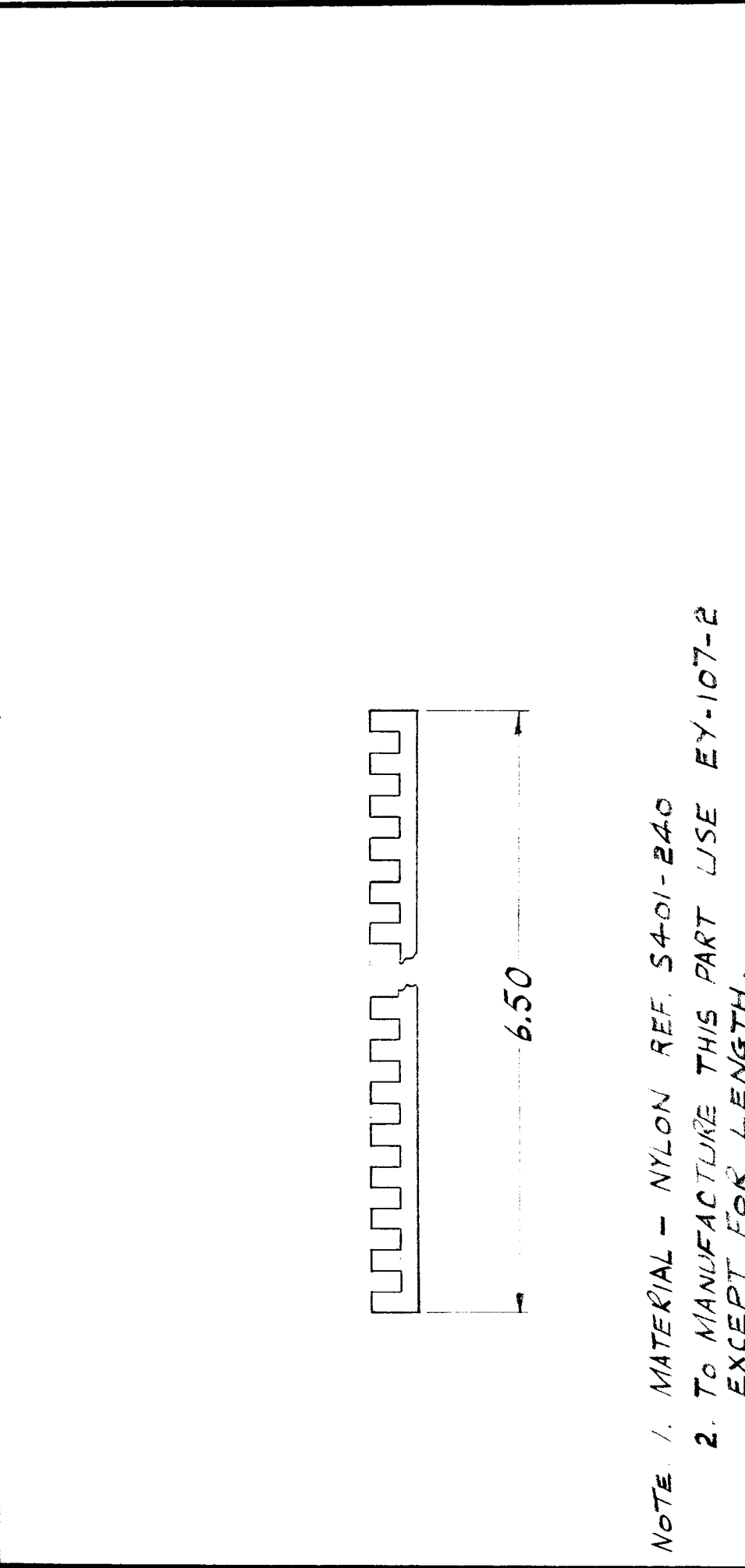
  

DRAWN	ELEC. DES. APP.	MECH. DES. APP.
<i>[Signature]</i>	<i>[Signature]</i>	<i>[Signature]</i>
CHECKED	FINAL APPROVAL	
RPL	EY10006-φ	

TMC (Canada) LIMITED	
OTTAWA ONTARIO	
EYELET, RIVET TYPE.	

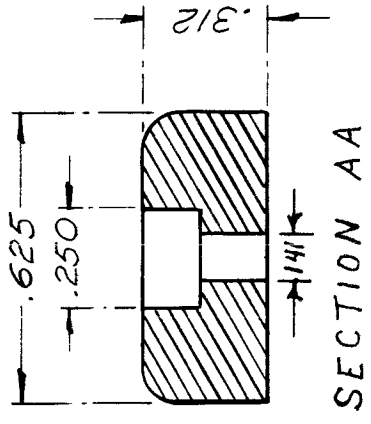
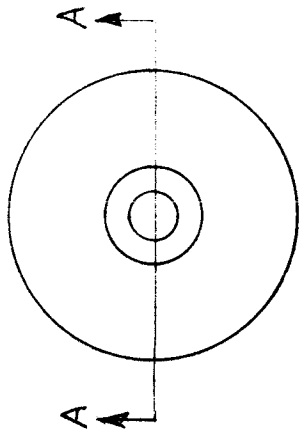
ISSUE	ITEM	CHANGED FROM	DATE	CN. NO.	DRAFTS	CHECKER	ENG. APP.	REQ.	ITEM	PART NO.	DESCRIPTION	SYMBOL
X		ENG RFL	17 JAN 70		AF							



NOTE: 1. MATERIAL - NYLON REF. S401-240  
 2. TO MANUFACTURE THIS PART USE EY-107-2 EXCEPT FOR LENGTH.

MTR	PROJECT NO.	ASSY. NO.	DATE	STOCK SIZE	TMC (Canada) LIMITED OTTAWA ONTARIO
USED ON				INSULATOR, RETAINER	
MAXIMUM ALLOWABLE TOLERANCES HAVE BEEN DETERMINED AND DEVIATIONS WILL BE CAUSE FOR REJECTION. REMOVE ALL BURRS AND SHARP EDGES		IF IT IS FOUND DESIRABLE TO CHANGE ANY TOLERANCE OR OTHER DETAIL SPECIFIED ON THIS DRAWING NOTIFY THE PURCHASER PROMPTLY.		MATERIAL	FEARNLEY
TOLERANCES		SCALE 2/1		TYPE & TEMPER	
DEC. DIM. ± .015	.X = .05	DIMENSIONS IN INCHES UNLESS OTHERWISE SPECIFIED		HEAT TREAT. SPEC.	
FRAC. DIM. ± 1/64	.XX ± .01	DRILL: PUNCH, COMMERCIAL STOCK SIZES AND MANUFACTURERS TOLERANCES ARE NOT INCLUDED.		DRAWN	ELEC. DES. APP.
ANGULAR DIM. ± 0° 30'	.XXX ± .005			CHECKED	MECH. DES. APP.
ALL OTHERS					FINAL APPROVAL
					EY10007
					X

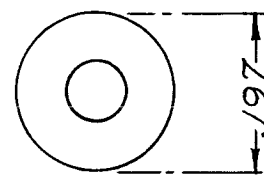
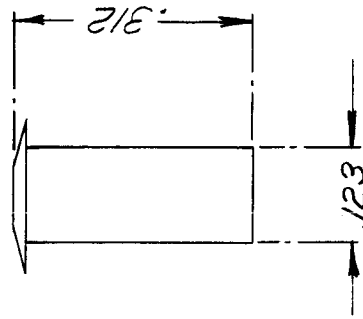
ISSUE	ITEM	CHANGED FROM	DATE	CN. NO.	DRAFTS	CHECKER	ENG. APP.	REQ.	ITEM	PART NO.	DESCRIPTION	SYMBOL
Φ		PROD RELEASE	9 MAR 73		CC	HCS	SDW					



MANUFACTURER: HERMAN H. SMITH INC., # 2193

DCS-1	PROJECT NO.	DATE	9 MAR 73
MODEL	ASSY. NO.	DATE	
USED ON			
MAXIMUM ALLOWABLE TOLERANCES HAVE BEEN DETERMINED AND DEVIATIONS WILL BE CAUSE FOR REJECTION. REMOVE ALL BURRS AND SHARP EDGES.		IF IT IS FOUND DESIRABLE TO CHANGE ANY TOLERANCE OR OTHER DETAIL SPECIFIED ON THIS DRAWING NOTIFY THE PURCHASER PROMPTLY.	
TOLERANCES DEC. DIM. ± .05 FRAC. DIM. ± 1/64 ANGULAR DIM. ± 0° 30'		SCALE 2:1 DIMENSIONS IN INCHES UNLESS OTHERWISE SPECIFIED DRILL, PUNCH, COMMERCIAL STOCK SIZES AND MANUFACTURERS TOLERANCES ARE NOT INCLUDED.	
ALL OTHERS	DEC. DIM. ± .05 FRAC. DIM. ± 1/64 ANGULAR DIM. ± 0° 30'	DIMENSIONS IN INCHES UNLESS OTHERWISE SPECIFIED DRILL, PUNCH, COMMERCIAL STOCK SIZES AND MANUFACTURERS TOLERANCES ARE NOT INCLUDED.	
TMC (Canada) LIMITED OTTAWA ONTARIO		RUBBER BUMPER, RECESS	
C. CHARLES DRAWN		H.C. SCHAFFER MECH. DES. APP.	
S. WITTEN CHECKED		S. WITTEN FINAL APPROVAL	
FINISH & SPEC. NO.		EY 10008	

ISSUE	ITEM	CHANGED FROM	DATE	CM. NO.	DRAFTS	CHECKER	ENG. APP.	REQ.	ITEM	PART NO.	DESCRIPTION	SYMBOL
0		PROD RELEASE	9 MAR 73		C.C.	H.C.S.	SOW					



MANUFACTURER: G C ELECTRONICS, # 7257 C

MODEL		PROJECT NO.	ASSY. NO.	DATE	9 MAR 73	
TOLERANCES		MAXIMUM ALLOWABLE TOLERANCES HAVE BEEN DETERMINED AND DEVIATIONS WILL BE CAUSE FOR REJECTION REMOVE ALL BURRS AND SHARP EDGES DEC. DIM. $\pm .05$ FRAC. DIM. $\pm \frac{1}{64}$ ANGULAR DIM. $\pm 0^{\circ} 30'$ .XX = .01 .XXX = .005				
IF IT IS FOUND DESIRABLE TO CHANGE ANY TOLERANCE OR OTHER DETAIL SPECIFIED ON THIS DRAWING NOTIFY THE PURCHASER PROMPTLY.		USED ON SCALE $\frac{1}{1}$ DIMENSIONS IN INCHES UNLESS OTHERWISE SPECIFIED DRILL: PUNCH, COMMERCIAL STOCK SIZES AND MANUFACTURERS TOLERANCES ARE NOT INCLUDED.				
STOCK SIZE		TMC (Canada) LIMITED OTTAWA ONTARIO				
MATERIAL		EYELET, BRASS				
TYPE & TEMPER		G. CHARLES				
WEIGHT PER PC.		H.C. SCHAFER				
HEAT TREAT. SPEC.		ELEC. DES. APP. S. WITTEN MECH. DES. APP.				
FINISH & SPEC. NO.		DRAWN CHECKED FINAL APPROVAL EY 10009 $\Phi$				