

STANDARD DRAWING

FH-100-B

IF IT IS FOUND DESIRABLE TO CHANGE ANY TOLERANCE OR OTHER DETAIL SPECIFIED ON THIS DRAWING NOTIFY THE PURCHASER PROMPTLY.

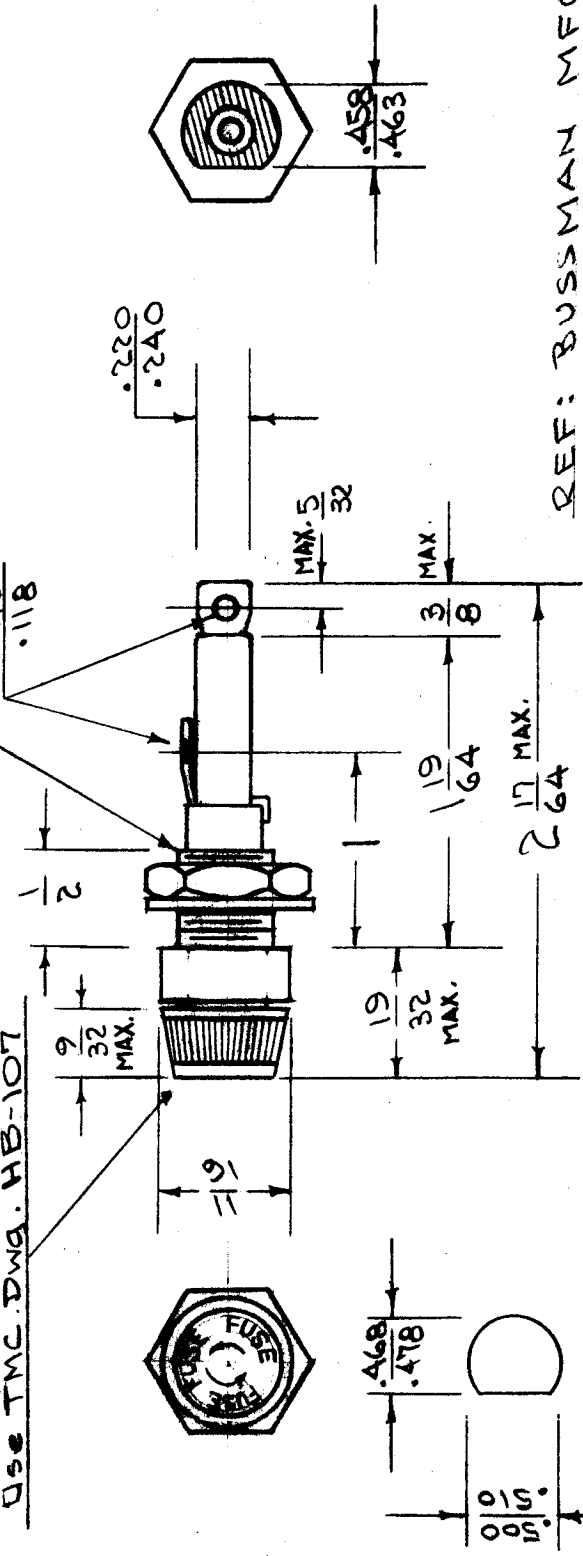
MAXIMUM ALLOWABLE TOLERANCES HAVE BEEN DETERMINED AND DEVIATIONS WILL BE CAUSE FOR REJECTION. REMOVE ALL BURRS AND SHARP EDGES.

T.M.C. NO.	BUSSMAN NO.	REMARKS.
FH-100-1	HKP	END TERM. MOVEABLE
FH-100-2	HKP-M	" " STATIONARY
FH-100-3	HKP-H	HKP-M WITH TEST HOLE IN KNOB

When supplying cap for spare parts, use T.M.C. DWG. HB-107

NUT & NEOPRENE WASHER FURNISHED BY MFG.

1/2 X 24 THDS.



REF: BUSSMAN MFG. CO.

DRILLING PLAN DIM. FOR REF. ONLY.

REQ. ITEM	PART NO.	DESCRIPTION	SYMBOL
#	#	THE TECHNICAL MATERIEL CORP. MAMARONECK, NEW YORK	
STOCK SIZE		FUSE EXTRACTOR POST	
MATERIAL	WEIGHT PER PC.		
#	#		
TYPE & TEMPER			
#	#		
HEAT TREAT. SPEC.			
#	#		
FINISH & SPEC. NO.			
#	#		

2	DIMS CLARIFIED	2-9-63	8210	W.D. K.P.
1	FUSE LETTERING CLARIFIED	8/7/57	1	W.D. K.P.
A	CAP NOTE ADDED	6/10/54		W.D. K.P.
	REDRAWN - NO CHANGE			W.D. K.P.

ISSUE ITEM	CHANGED FROM	DATE	CN. NO.	DRAFTS/CHECKER	ENG. APP.

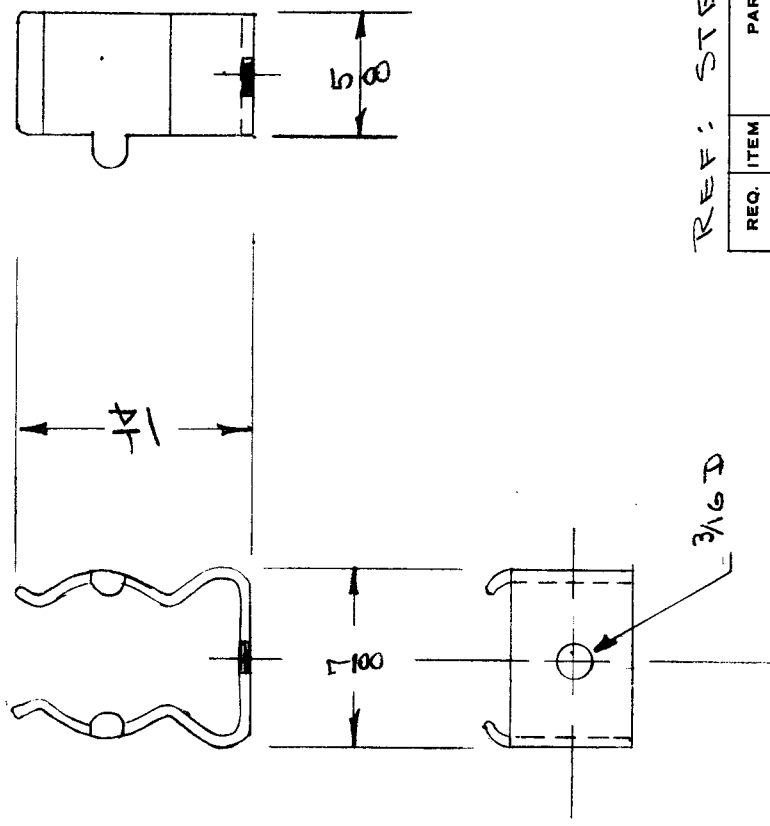
TOLERANCES		SCALE
DEC. DIM. ±		
FRAC. DIM. ±		
ANGULAR DIM. ±		

DRILL, PUNCH, COMMERCIAL STOCK SIZES AND MANUFACTURERS TOLERANCES ARE NOT INCLUDED.	
---	--

DRAWN	ELEC. DES. APP.	MECH. DES. APP.
W.D. K.P.	G.T.O	W.D. K.P.
FINAL APPROVAL		
FH-100-B		

IF IT IS FOUND DESIRABLE TO CHANGE ANY TOLERANCE OR OTHER DETAIL SPECIFIED ON THIS DRAWING NOTIFY THE PURCHASER PROMPTLY.

MAXIMUM ALLOWABLE TOLERANCES HAVE BEEN DETERMINED AND DEVIATIONS WILL BE CAUSE FOR REJECTION. REMOVE ALL BURRS AND SHARP EDGES



REF: STEWART - 60 AMP - 250VOLT

FH-101		USED ON	
MODEL	PROJECT NO.	ASSY. NO.	DATE
<p>REQ. ITEM PART NO. DESCRIPTION SYMBOL</p> <p>STOCK SIZE</p> <p>BRASS MAMARONECK. NEW YORK</p> <p>MATERIAL WEIGHT PER PC. CLIP, FUSE</p> <p>TYPE & TEMPER</p> <p>HEAT TREAT. SPEC.</p> <p>SILVER PLATE</p> <p>FINISH & SPEC. NO.</p>			
ISSUE ITEM	CHANGED FROM	DATE	CN. NO.
TOLERANCES		DRAFTS	CHECKER
DEC. DIM. ±		SCALE FULL	
FRAC. DIM. ±		DRILL, PUNCH, COMMERCIAL STOCK	
ANGULAR DIM. ±		SIZES AND MANUFACTURERS	
		TOLERANCES ARE NOT INCLUDED.	
DRAWN		ELEC. DES. APP.	MECH. DES. APP.
CHECKED		FINAL APPROVAL	
DATE 7-27-53		PMS	

IF IT IS FOUND DESIRABLE TO CHANGE ANY TOLERANCE OR OTHER DETAIL SPECIFIED ON THIS DRAWING NOTIFY THE PURCHASER PROMPTLY.

MAXIMUM ALLOWABLE TOLERANCES HAVE BEEN DETERMINED AND DEVIATIONS WILL BE CAUSE FOR REJECTION. REMOVE ALL BURRS AND SHARP EDGES

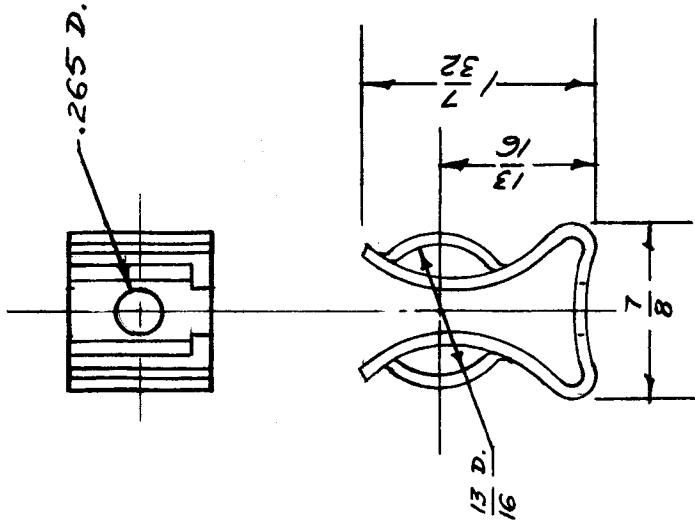
STANDARD DRAWING

FH-102

A

USED ON

AMT PER UNIT	MODEL	PROJECT NO.	ASS'Y. NO.	DATE
6	TAC-1	132		3-5-54
1	RTE			1/21/56



NOTICE TO PERSONS RECEIVING THIS DRAWING:
 THE TECHNICAL MATERIEL CORPORATION claims proprietary right in the materiel disclosed hereon. This drawing is issued in confidence for engineering information only and may not be reproduced or used to manufacture anything shown hereon without permission from THE TECHNICAL MATERIEL CORPORATION to the user. This drawing is loaned for mutual assistance and is subject to recall at any time.

Property of:

THE TECHNICAL MATERIEL CORPORATION
 MAMARONECK, NEW YORK

USE: FC-102-5-X-S

REF: LITTLEFUSE NO. 129001

REQ. ITEM	PART NO.	DESCRIPTION	SYMBOL
		THE TECHNICAL MATERIEL CORP. MAMARONECK, NEW YORK	
		CLIP, FUSE	
		STOCK SIZE	
		PHOSPHOR BRONZE	
		MATERIAL	
		WEIGHT PER PC.	
		TYPE & TEMPER	
		HEAT TREAT. SPEC.	
		SILVER PLATE	
		FINISH & SPEC. NO.	

A	1	USE FC-102-5-X-S ADDED	723	1	K.	JAB	JAB	
ISSUE	ITEM	CHANGED FROM	DATE	CN. NO.	DRAFTS	CHECKER	ENG. APP.	
TOLERANCES								
SCALE								
DRILL, PUNCH, COMMERCIAL STOCK SIZES AND MANUFACTURERS TOLERANCES ARE NOT INCLUDED.								
ALL OTHERS	DEC. DIM. ±	FRAC. DIM. ±	ANGULAR DIM. ±					

