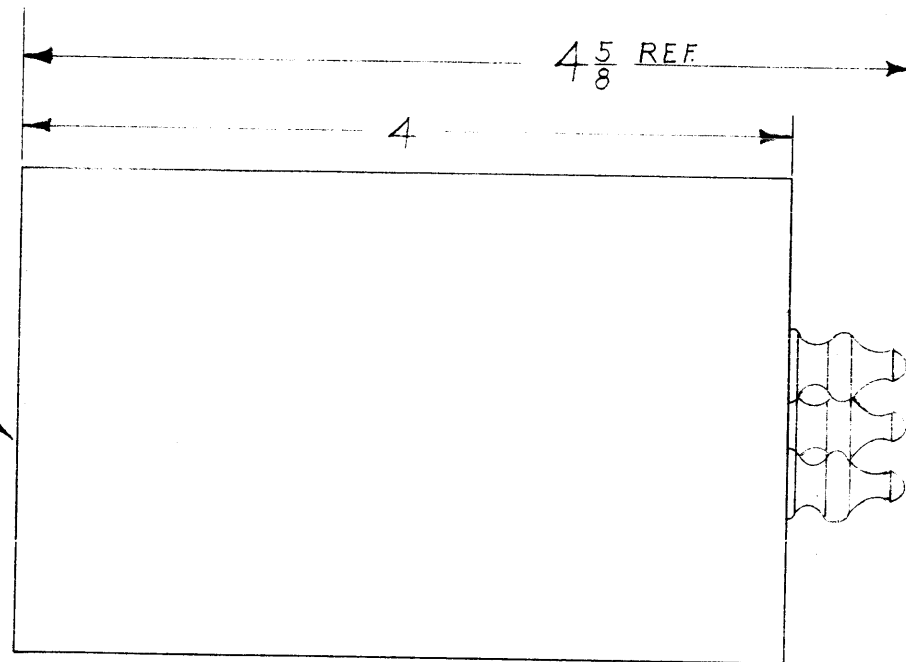


IF IT IS FOUND DESIRABLE TO CHANGE ANY TOLERANCE OR OTHER DETAIL SPECIFIED ON THIS DRAWING NOTIFY THE PURCHASER PROMPTLY.

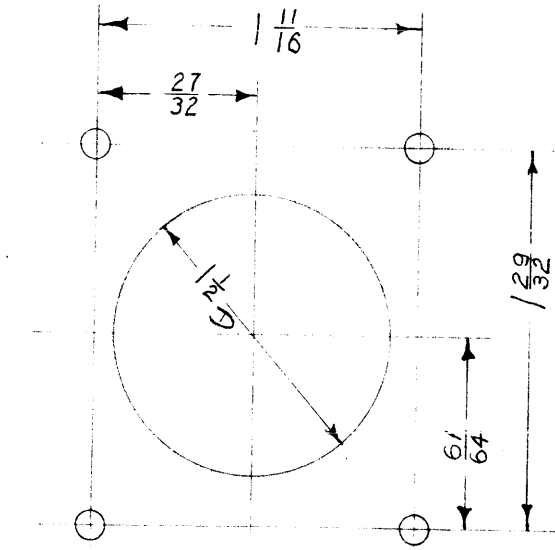
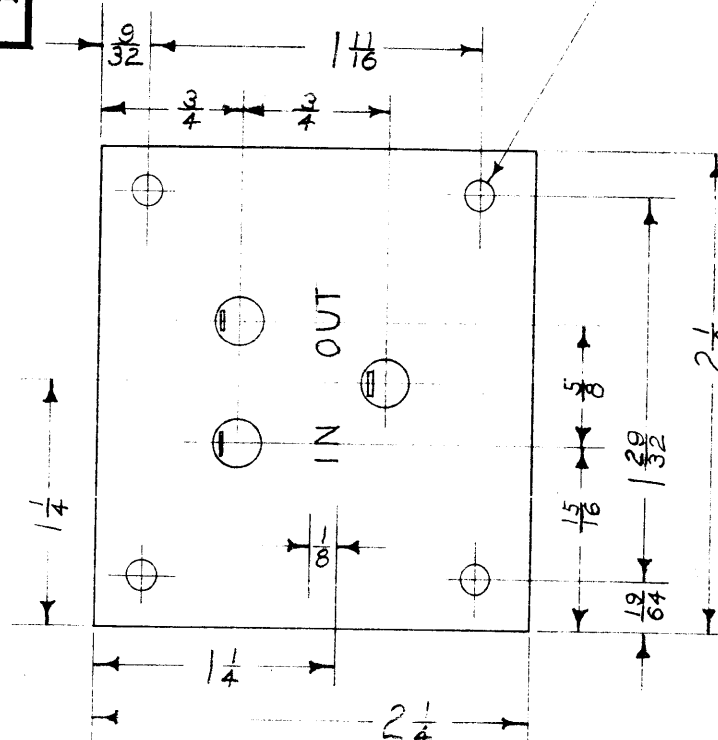
MAXIMUM ALLOWABLE TOLERANCES HAVE BEEN DETERMINED AND DEVIATIONS WILL BE CAUSE FOR REJECTION. REMOVE ALL BURRS AND SHARP EDGES

MARK WITH FI-101 AND MFG. NO.



FI-101
A

6-32 X 3/8 DEEP INSERTS



CHASSIS CUTOUT DETAIL

- 1 Specification: Filter, Band Pass, Receiving Type, Centered on 2125 C.P.S. Flat within 3 D.B. to +100 C.P.S. down not less than 40 D.B. at 340 cps Insertion Loss 6 D.B., Inout and output impedance 600 ohms
- 2 Terminals: Shall be glass body, tinned lugs, and neoprene creepage band, hermetically sealed.
- 3 Case: Shall be made of cold rolled steel, hot tinned dipped or cadmium plated.
- 4 Finish: Shall be grey, TMC Specification S-108. The inserts and terminals shall be free of paint.
- 5 Lett rings: Shall be 1/8 inch high Gothic characters and shall be coated with clear fungicidal lacquer.
- 6 Unit shall be hermetically sealed.

Electrical Spec. Same as FX-132
Ref. Burnell and Co., Type S10956

REQ.	ITEM	PART NO.	DESCRIPTION	SYMBOL
			THE TECHNICAL MATERIEL CORP. MAMARONECK, NEW YORK	
			FILTER; BAND PASS	
STOCK SIZE				
MATERIAL		WEIGHT PER PC.		
TYPE & TEMPER		F.M.		
HEAT TREAT. SPEC.		DRAWN ELEC. DES. APP. MECH. DES. APP.		
FINISH & SPEC. NO.		CHECKED FINAL APPROVAL		
		FI-101		
		A		

—	—	REDRAWN - NO CHANGE	7/27/53	—	F. M.	J.A.D.	J.A.D.
A	1	Model C4 was SPI-1 REF NO. CH. was S7601 ins. loss	2-2-53	1	C.D.D.	J.A.D.	
ISSUE	ITEM	CH. was 1 DB	CHANGED FROM	DATE	CN. NO.	DRAFTS	CHECKER
TOLERANCES		SCALE:					

ALL OTHERS	DEC. DIM. ± FRAC. DIM. ± ANGULAR DIM. ±	DRILL, PUNCH, COMMERCIAL STOCK SIZES AND MANUFACTURERS TOLERANCES ARE NOT INCLUDED.
------------	-----------------------------------------------	-------------------------------------------------------------------------------------

SFP - 1	121	A - 445	7-2-52
MODEL	PROJECT NO.	ASS'Y. NO.	DATE

USED ON