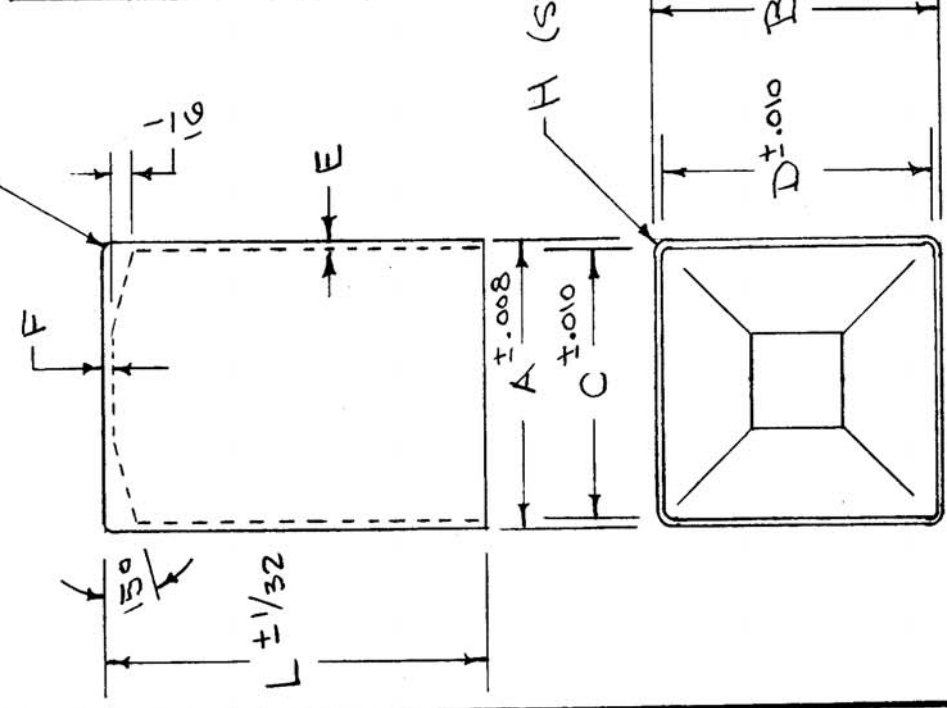


# STANDARD DRAWING

REQ. PER UNIT: 1  
 MODEL: A-1387  
 USED ON ASSY. NO.:  
 DATE: 5-1-58  
 FP-108  
 K

G (BOTTOM R)

TMC-NO	L	A	B	C	D	E	F	G	H
FP-108-1	2 1/8	1.425	1.425	1.375	1.375	.025	.035	1/16	5/32
FP-108-2	1 1/2	1.425	1.425	1.375	1.375	.025	.035	1/16	5/32
FP-108-3	2 5/8	1 3/4	1	-	-	.025	.035	1/16	5/32
FP-108-4	1 7/8	1.425	1.425	1.375	1.375	.025	.035	1/16	5/32
FP-108-5	2 7/8	1.425	1.425	1.375	1.375	.025	.035	1/16	5/32
FP-108-6	1 5/8	1.425	1.425	1.375	1.375	.025	.035	1/16	5/32
FP-108-7	1 3/4	1.425	1.425	1.375	1.375	.025	.035	1/16	5/32



## NOTICE TO PERSONS RECEIVING THIS DRAWING

THE TECHNICAL MATERIEL CORPORATION claims proprietary right in the material disclosed herein. This drawing is issued in confidence and contains information only and may not be reproduced or used to manufacture any thing shown herein without permission from THE TECHNICAL MATERIEL CORPORATION to the user. This drawing is loaned for mutual assistance and is subject to recall at any time.

Property of:

THE TECHNICAL MATERIEL CORPORATION  
 MAMARONECK, NEW YORK

Ref. ALCOA

REQ. ITEM	PART NO.	DESCRIPTION	SYMBOL
K	FP108-1, L" WAS 2 1/8	THE TECHNICAL MATERIEL CORP. MAMARONECK, NEW YORK	K
J	"L" Tol. WAS $\pm 1/64$	CAN	
#	REDRAWN NO CHANGE		
ISSUE ITEM	CHANGED FROM		
DATE	CH. NO.	DRAFTS	CHECKER
2-11-63	8252		
4/14/58	10		
10/9/56	#		
DATE	CH. NO.	DRAFTS	CHECKER
10/9/56	#		
TYPE & TEMPER	HEAT TREAT. SPEC.	DRAWN	CHECKED
2 S	#		
MATERIAL			
Aluminum			
FINISH & SPEC. NO.			
#			
ELEC. DES. APP. MECH. DES. APP.			
FP-108			
FINAL APPROVAL			

SCALE:

MAXIMUM ALLOWABLE TOLERANCES HAVE BEEN DETERMINED AND ANY DEVIATIONS WILL BE CAUSE FOR REJECTION. REMOVE ALL BURRS AND SHARP EDGES