

FP-159 C

USED ON		MODEL	ASSY. NO.	DATE
4	SBE-1	A-1440	7-18-57	
3	SBE-2	A-1440	3-12-58	
1	SBE-3	A-1440	11-30-59	

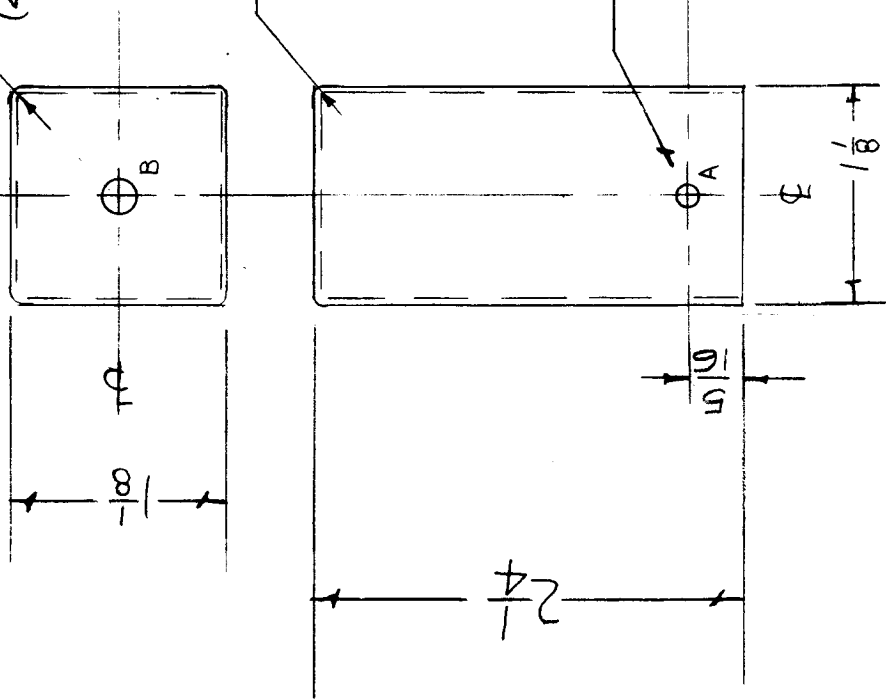
AX-2D5

A = # 30 DRILL (.128) D 2 REQ.
 B = 3/16 D (.187) D 1 REQ

(inside)
 $\frac{7}{32}$ R. (4 Corners)

$\frac{7}{32}$ R. (inside)

OPR. SIDE SAME



REF: ALUMINUM GOODS #03184

REQ. ITEM	PART NO.	DESCRIPTION	SYMBOL
C	.0159 THK.	THE TECHNICAL MATERIEL CORP. MAMARONECK. NEW YORK	
B	ALUMINUM	CAN, MACHINING	
A	ALUMINUM	SBE	
ISSUE ITEM			
DATE	CH. NO.	DRAFTS	CHECKER
6-29-56	2141B	606	AL
3/2/58	2	16	AL
9/29/57	1	16	AL
CHANGED FROM			
5/16 WAS	9/32		
TOLERANCES			
DEC. DIM. ±	MAXIMUM ALLOWABLE TOLERANCES HAVE BEEN DETERMINED AND ANY DEVIATIONS WILL BE CAUSE FOR REJECTION.		
FRAC. DIM. ±	REMOVE ALL BURRS AND SHARP EDGES		
ANGULAR DIM. ±			
TYPE & TEMPER	HEAT TREAT. SPEC.		
—	—		
MATERIAL			
—			
DRAWN	CHECKED		
DB	DB		
FINISH & SPEC. NO.		ELEC. DES. APP. MECH. DES. APP.	
		RWB	
FINAL APPROVAL		FP-159 C	