

IF IT IS FOUND DESIRABLE TO CHANGE ANY TOLERANCE OR OTHER DETAIL SPECIFIED ON THIS DRAWING NOTIFY THE PURCHASER PROMPTLY.

DIMENSIONS IN INCHES UNLESS OTHERWISE SPECIFIED

MAXIMUM ALLOWABLE TOLERANCES HAVE BEEN DETERMINED AND DEVIATIONS WILL BE CAUSE FOR REJECTION REMOVE ALL BURRS AND SHARP EDGES

ISSUE	ITEM	CHANGED FROM	DATE	CN NO.	DRAFTS	CHECKER	ENG. APP.
0		PROD RELEASE	9 July 73		from	SDW	SDW

REQ	ITEM	PART NO.	DESCRIPTION	SYMBOL
-----	------	----------	-------------	--------

SPECIFICATIONS

RANGE: A AND B PORTS 0.2 TO 18 MHZ
C PORTS D.C. TO 18 MHZ

POWER RATING: 50 MW. MAX.

IMPEDANCE: 50 OHMS NOMINAL, ALL PORTS

CONVERSION LOSS: 7 dB MAX. (SSB)

MINIMUM REJECTION: A at B 60 dB
A at C 55 dB
C at A 90 dB
C at B 90 dB
B at A 60 dB
B at C 50 dB

INTERMODULATION: 2ND AND 3RD ORDER PRODUCTS: - 85 dBm
INPUT LEVEL fo at A: + 7 dBm
INPUT LEVEL f1 and f2 at C: - 25 dBm

PHYSICAL DIMENSIONS: 0.8 x 0.4 x 0.25 IN.

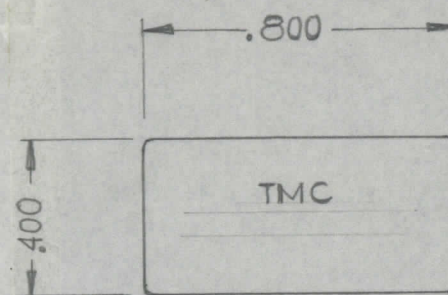
OPERATION TEMPERATURE RANGE: - 55° C. to + 125° C.

STORAGE TEMPERATURE RANGE: - 65° C. to + 125° C.

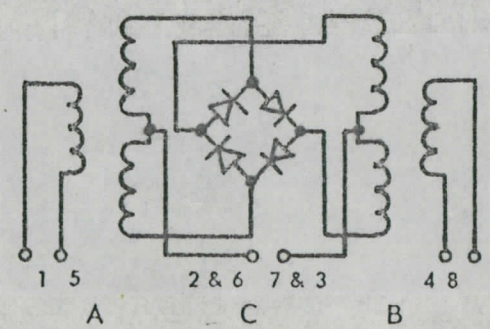
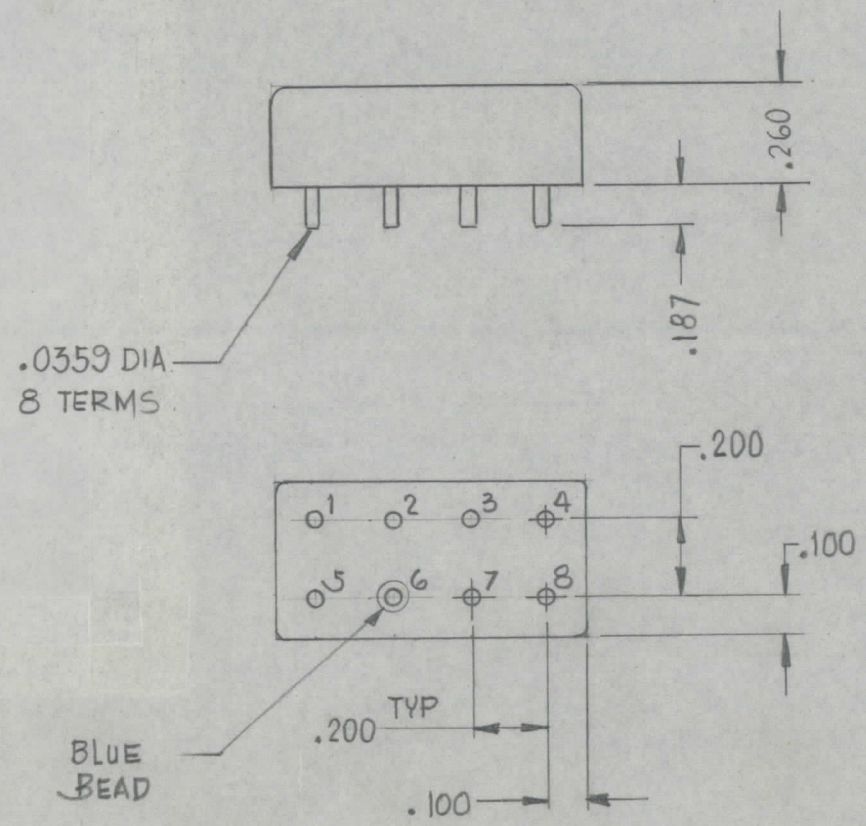
VIBRATION: 30 G

SHOCK: 50 G

ALTITUDE: 70,000 FEET



FX10044



SCHEMATIC DIAGRAM

NOTE:~
MANUFACTURER:~
FERRITRONICS LTD. PART NO. # FL2200

STOCK SIZE		TMC (Canada) LIMITED OTTAWA ONTARIO		
SEE NOTE		FILTER		
MATERIAL	WEIGHT PER PC			
TYPE & TEMPER		SDW	MECH. DES. APP.	
		S. WITTEN		
HEAT TREAT SPEC		FINAL APPROVAL		
		FX10044		
FINISH & SPEC. NO.		0		

TOLERANCES UNLESS OTHERWISE SPECIFIED		SCALE 2:1
ALL OTHERS	DEC. DIM. 1/64 FRAC. DIM. 1/64 ANGULAR DIM. ±0°30'	DRILL, PUNCH, COMMERCIAL STOCK SIZES AND MANUFACTURERS TOLERANCES ARE NOT INCLUDED

REX-1	130/71	A11105-5	5 Oct 73
MODEL	PROJECT NO.	ASSY NO.	DATE
USED ON			