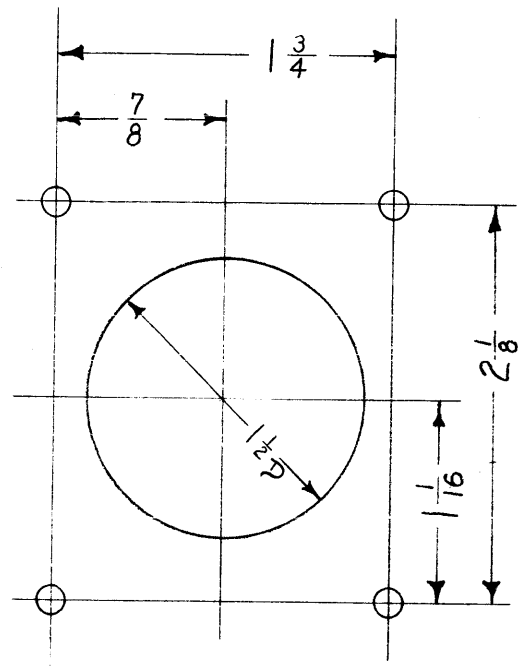
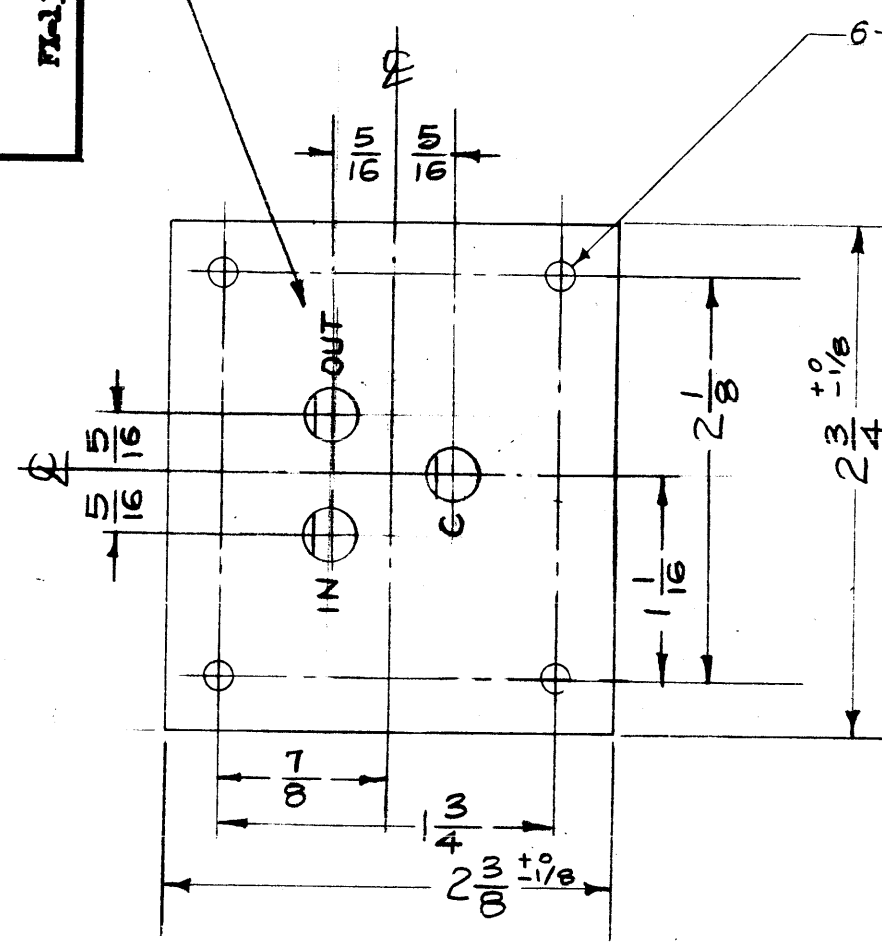
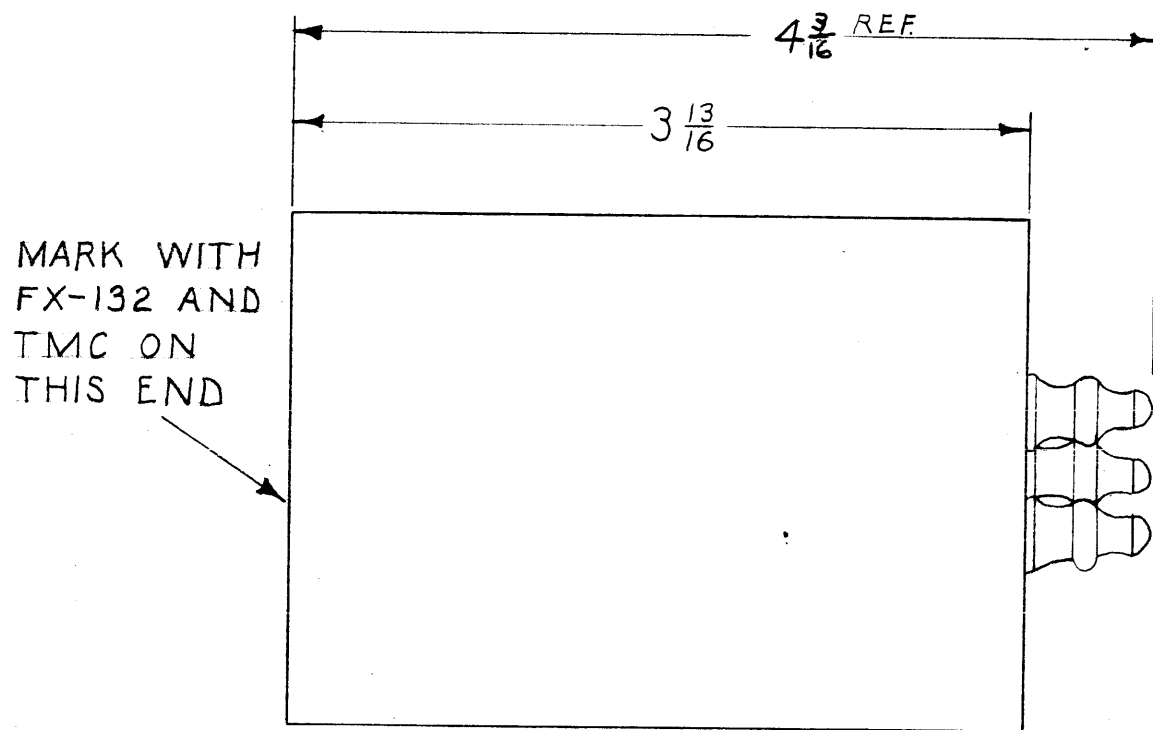


IF IT IS FOUND DESIRABLE TO CHANGE ANY TOLERANCE OR OTHER DETAIL SPECIFIED ON THIS DRAWING NOTIFY THE PURCHASER PROMPTLY.

MAXIMUM ALLOWABLE TOLERANCES HAVE BEEN DETERMINED AND DEVIATIONS WILL BE CAUSE FOR REJECTION. REMOVE ALL BURRS AND SHARP EDGES

D
FX-132

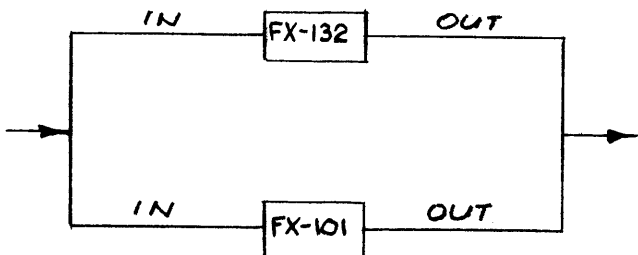
TERMINAL IDENTIFICATION TO BE MAINTAINED WITHIN 1-1/2 DIA. CIRCLE. LETTERINGS TO BE 1/8 HIGH.



CHASSIS CUTOUT DETAIL

- Specifications:** Filter, Band Pass, Centered on 2125 C.P.S. Flat within 3 D.B. to +100 C.P.S. down not less than 40 D.B. at 340 cps. Insertion Loss 6 D.B., Input and output impedance 600 ohms
- Terminals:** Shall be steatite body, tinned lugs, and neoprene gland hermetically sealed. TE-134 or equal
- Cas :** Shall be made of cold rolled steel, electro tinned.
- Finish:** Shall be grey, TMC Specification S-115 the studs and terminals shall be free of paint.
- Lettering:** Shall be 1/8 inch high Gothic characters and shall be coated with clear fungicidal lacquer, except metal stamping.
- Unit shall be hermetically sealed.**

Shall Be Capable Of Operating As Follows.



With no deterioration of its characteristics.

SAME ELECTRICALLY AS FOR FI-101

ISSUE	ITEM	CHANGED FROM	DATE	CN. NO.	DRAFTS	CHECKER	ENG. APP.
D	1	SPEC #4 (FINISH) WAS S-10B	8.17.64	12129	1/2 B	(initials)	(initials)
C	2	Case Dim. chgd. from 2-5/16 x 2-5/8 to 2-3/8 x 2-3/4 IN ACC/W/MIL-T-27A TYPE GA. FINISH WAS HOT-TINNED OR PLATE	1/5/58	4	1/6	(initials)	(initials)
B	1	I Added To 340 CPS	7/19/57	3	(initials)	(initials)	(initials)
A	1	DIAG. & NOTES ADDED	5/6/57	2	(initials)	(initials)	(initials)
		REDRAWN-NO CHANGE	7/27/53	1	F.M.	(initials)	(initials)

SFP-2	121	A-448	4-16-53
MODEL	PROJECT NO.	ASS'Y. NO.	DATE
USED ON			

REQ.	ITEM	PART NO.	DESCRIPTION	SYMBOL
			THE TECHNICAL MATERIEL CORP.	
			MAMARONECK. NEW YORK	
			FILTER; BAND PASS 2125 CPS	
			RECEIVING	
			C.D.D 3-23-53	
			DRAWN	ELEC. DES. APP.
			M.H.S.	MECH. DES. APP.
			CHECKED	FINAL APPROVAL
			2-A-441	FX-132
				D