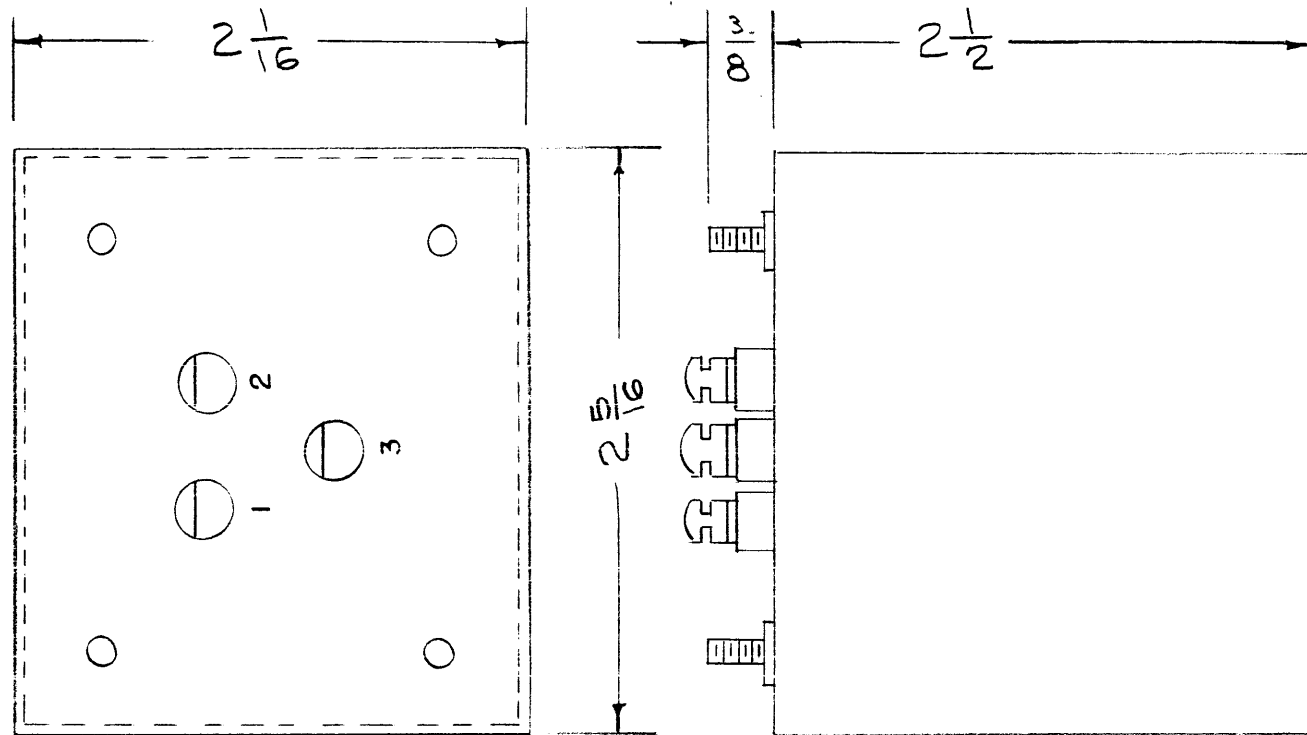


IF IT IS FOUND DESIRABLE TO CHANGE ANY TOLERANCE OR OTHER DETAIL SPECIFIED ON THIS DRAWING NOTIFY THE PURCHASER PROMPTLY.

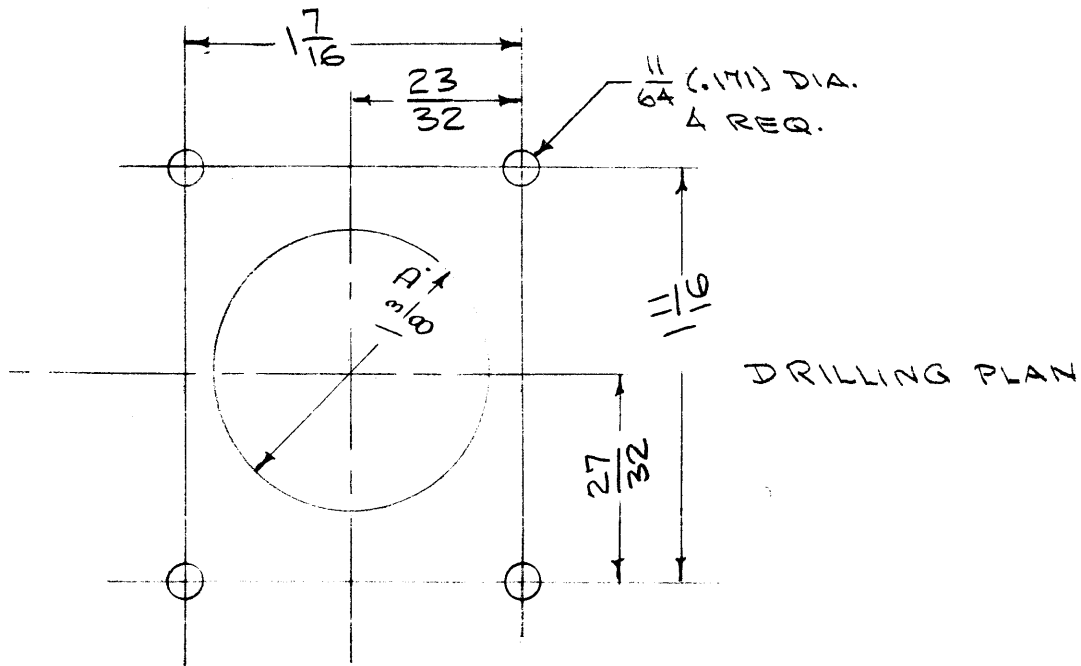
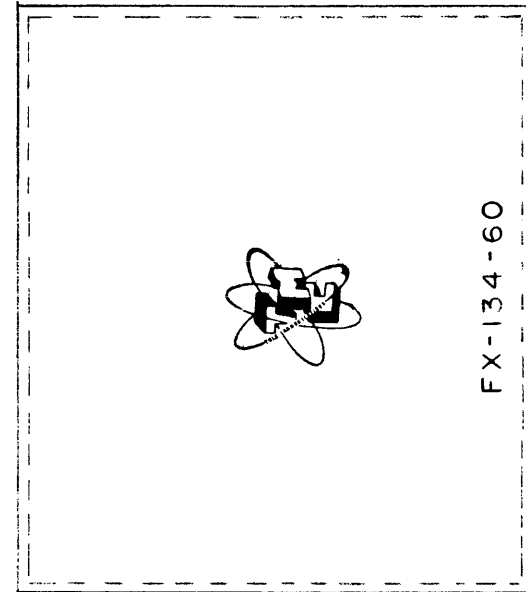
MAXIMUM ALLOWABLE TOLERANCES HAVE BEEN DETERMINED AND DEVIATIONS WILL BE CAUSE FOR REJECTION. REMOVE ALL BURRS AND SHARP EDGES



EX-134

MECHANICAL SPECIFICATIONS
CASE - STEEL (BX-112)
STUDS - 6-32 X 3/8
COLOR - GRAY
FILLER - COMPOUND

ELECTRICAL SPECIFICATIONS
WITH AUDIO GENERATOR
OUTPUT OF 10 V RMS
APPLIED TO THE UNIT
THROUGH 47K OHMS, THE
VOLTAGE ACROSS TERMINALS
1 & 2 MUST BE 60 MV OR
LESS AT 60 CPS AND IN
THE RANGE OF 1.5-2.5 V
AT 600 C.P.S.



A	1	COMPLETE CHANGE AS PER BX-112	1/8/58	1	K	J.H.W.	J.M.
ISSUE	ITEM	CHANGED FROM	DATE	CN. NO.	DRAFTS	CHECKER	ENG. APP.
TOLERANCES		SCALE:					
ALL OTHERS	DEC. DIM. \pm FRAC. DIM. \pm ANGULAR DIM. \pm	DRILL, PUNCH, COMMERCIAL STOCK SIZES AND MANUFACTURERS TOLERANCES ARE NOT INCLUDED.					
REQ. PER UNIT	MODEL	PROJECT NO.	ASSY. NO.	DATE	USED ON		

REQ.	ITEM	PART NO.	DESCRIPTION	SYMBOL
	#		THE TECHNICAL MATERIEL CORP. MAMARONECK. NEW YORK	
		STOCK SIZE		
	#	#	FILTER, ABSORPTION	
		MATERIAL	WEIGHT PER PC.	
	#		FX-134-60	
		TYPE & TEMPER	C.P.D. - 10/15/58 2A-503	
	#		KZ	
		HEAT TREAT. SPEC.	DRAWN	ELEC. DES. APP.
	#		J.H.W.	A.J.J.
			CHECKED	FINAL APPROVAL
				FX-134
			FINISH & SPEC. NO.	