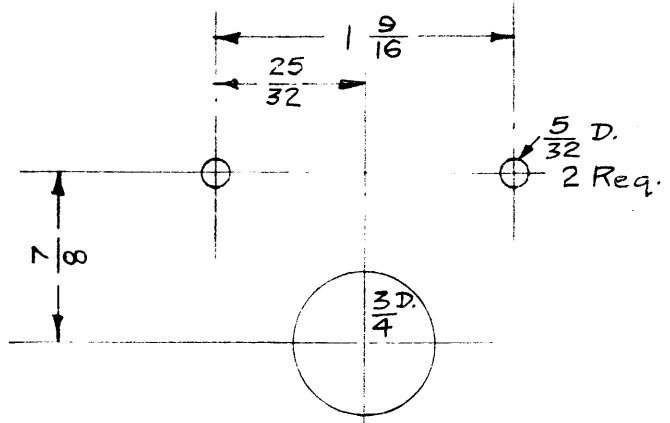
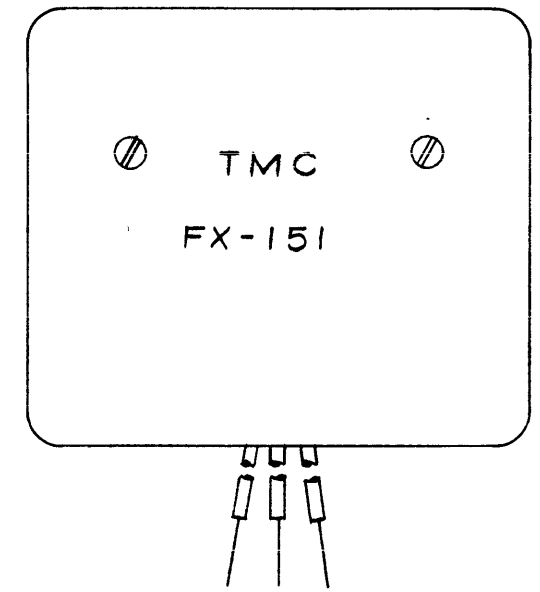
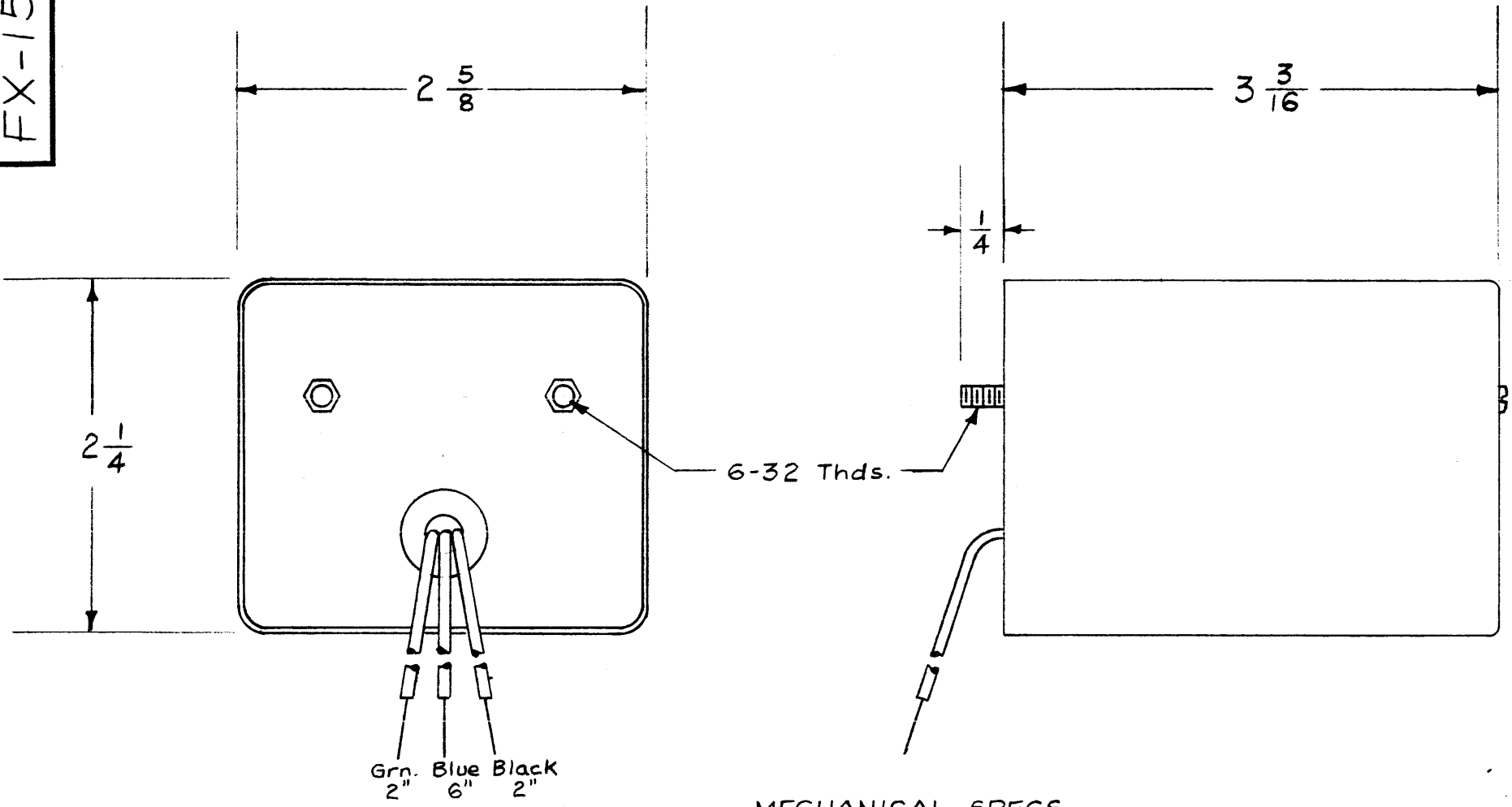


FX-151 C



DRILLING PLAN

MECHANICAL SPECS.

Case - Aluminum, ZINK CHROMATE PRIMER S114
& GRAY ENAMEL S115

ELECTRICAL SPECS.

BAND PASS - Output must be flat within 6db. in the region of 17.50 Kc. to 19.70 Kc.
BAND REJECTION - Output must be down at least 40.0 db. at 16.80 Kc. and 20.4 Kc.
INSERTION LOSS - Less than 3db. measured at the point of minimum loss within pass-band.
INPUT-OUTPUT NOMINAL IMPEDANCES - 20,000 Ω, Unbalanced

THE TECHNICAL MATERIEL CORP.
MAMARONECK, N.Y.
NEW YORK

THE TECHNICAL MATERIEL CORPORATION
MAMARONECK, N.Y.

ISSUE	ITEM	CHANGED FROM	DATE	CH. NO.	DRAFTS	CHECKER	ENG. APP.
C	1	ON MECH. SPECS. CASE WAS "CAUSTIC DIPPED & LACQUERED"	7.13.64	11720	ASB	<i>[Signature]</i>	<i>[Signature]</i>
B	1	20.41 Kc was 20.30 Kc	6/4/59	1089	J.C.B.	<i>[Signature]</i>	<i>[Signature]</i>
A	1	Band Pass Spec Output was 17.30 To 19.80 Kc	6/18/57	1	<i>[Signature]</i>	<i>[Signature]</i>	<i>[Signature]</i>

TOLERANCES: DEC. DIM. ±, FRAC. DIM. ± 1/64, ANGULAR DIM. ±

SCALE: FULL (4A-1388)

MAXIMUM ALLOWABLE TOLERANCES HAVE BEEN DETERMINED AND ANY DEVIATIONS WILL BE CAUSE FOR REJECTION. REMOVE ALL BURRS AND SHARP EDGES

REQ. PER UNIT	MODEL	PROJECT NO.	ASS'Y. NO.	DATE
1	GSB-1			3-25-57

USED ON

REQ. ITEM	PART NO.	DESCRIPTION	SYMBOL
	//	THE TECHNICAL MATERIEL CORP. MAMARONECK, NEW YORK	
	//	FILTER, BANDPASS	
	//	FX-151	
	//	163-25-57	<i>[Signature]</i>
	//	DRAWN	<i>[Signature]</i>
	//	CHECKED	<i>[Signature]</i>
	//	FINAL APPROVAL	<i>[Signature]</i>
	//	ELEC. DES. APP.	
	//	MECH. DES. APP.	
		FX-151	C