

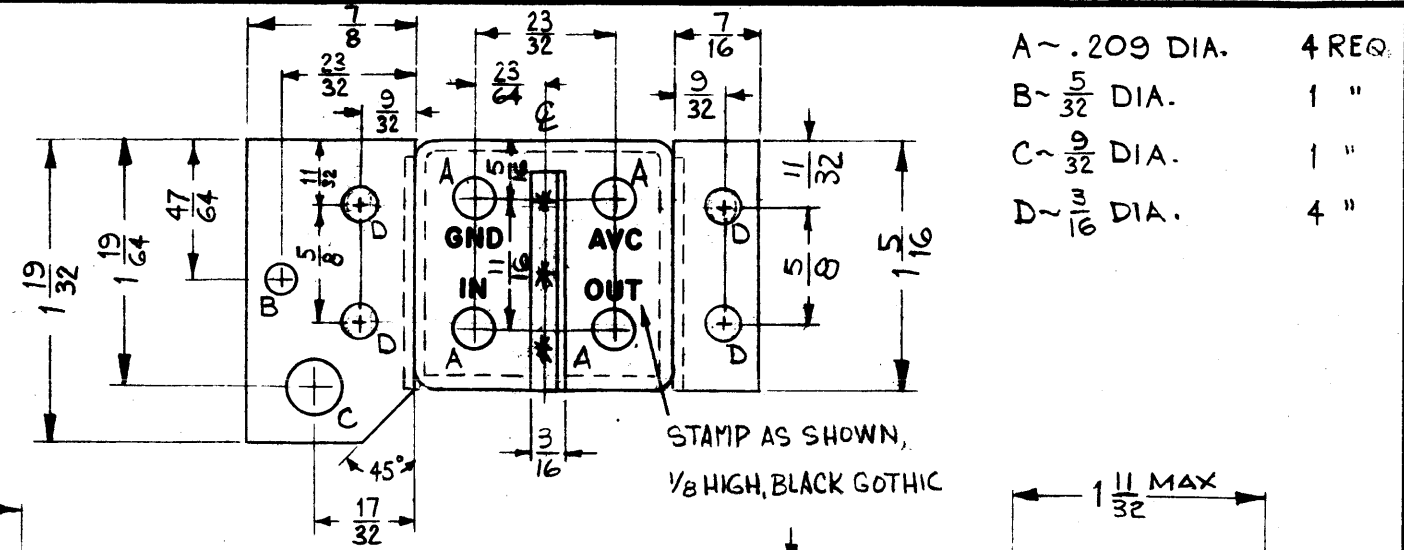
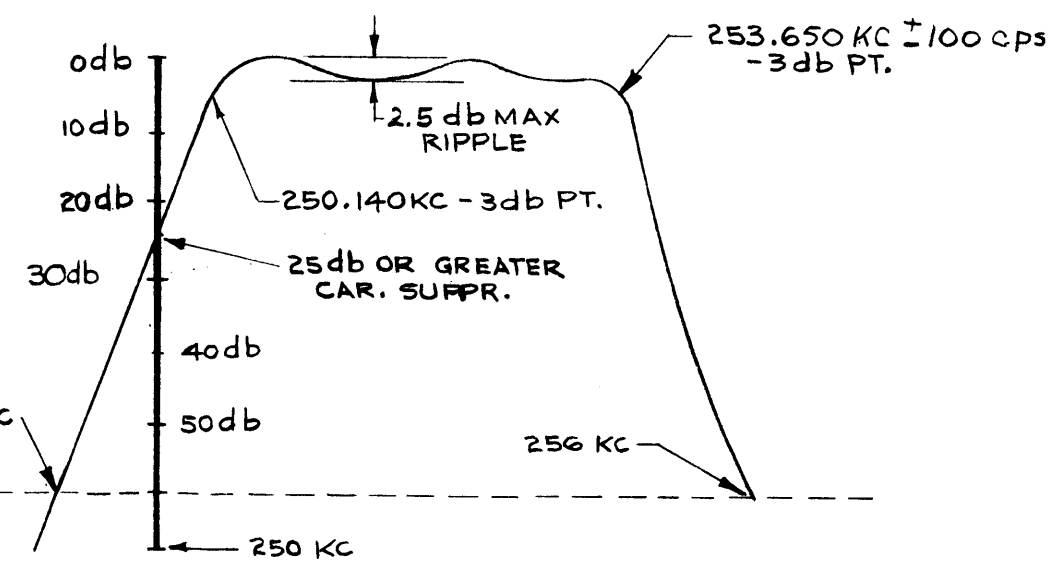
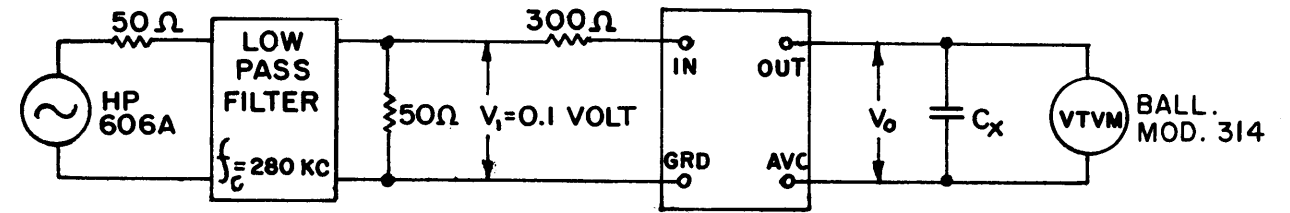
EX-168

THE CONTENTS OF THIS DRAWING ARE THE EXCLUSIVE PROPERTY OF THE TECHNICAL MATERIEL CORP. ITS UNAUTHORIZED USE OR REPRODUCTION IN WHOLE OR IN PART IS STRICTLY FORBIDDEN.

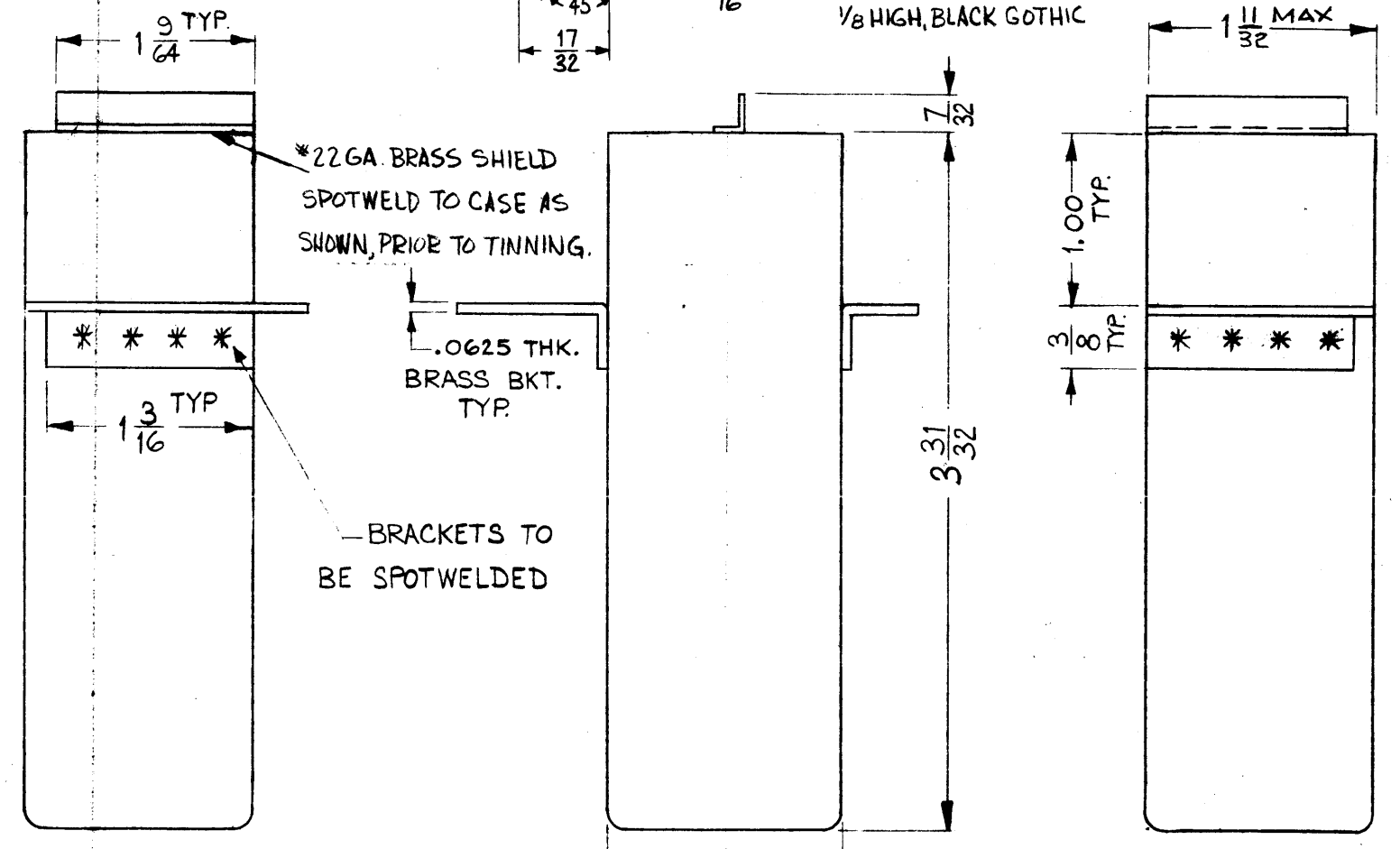
ELECTRICAL SPECIFICATIONS

1. TYPE - ~~UPPER~~ **UPPER** SIDEBAND
2. db MEASUREMENTS - ALL db MEASUREMENTS ARE RELATIVE TO MAXIMUM SIGNAL RESPONSE IN PASSBAND.
3. CARRIER FREQUENCY - 250 KC.
4. CARRIER SUPPRESSION - -25db OR GREATER.
5. -3db POINTS - 250.140 KC OR LESS; 253.650KC±100CPS.
6. -60db POINTS - 249.860 KC OR GREATER; 256.0 KC OR LESS. ALL RETURN LOBES AND SPURIOUS SHALL BE -60db OR GREATER, OVER THE RANGE OF ±50 KC FROM CARRIER FREQUENCY.
7. MAXIMUM PASSBAND RIPPLE: 2.5 db
8. INSERTION (LOSS OR GAIN): +3db ±1db.
9. INPUT IMPEDANCE - 300 OHMS (NOMINAL).
10. OUTPUT IMPEDANCE - NOT TO EXCEED 50 K OHMS (INTERNALLY TERMINATED)
11. D.C. RESISTANCE ACROSS OUTPUT - NOT TO EXCEED 5 K OHMS.
12. TEMPERATURE RANGE - 0° TO 70° C.

SEE TEST PROCEDURE A-764. INSERTION (LOSS OR GAIN) = $\pm(V_0 - V_1)$ IN DB.



- A - .209 DIA. 4 REQ.
- B - 5/32 DIA. 1 "
- C - 9/32 DIA. 1 "
- D - 1/16 DIA. 4 "



STAMP AS SHOWN 1/8 HIGH BLACK GOTHIC. W/LATEST REV. LETTER

| H | 253.650 KC ± 100 CPS WAS 253.650 ± 50 CPS | 2/15/68 | 18769 | W.B. | | E.F.M. |
|--|---|---|---------|--------|---------|-----------|
| G | MAX. PASSBAND RIPPLE WAS 2db | 6-21-67 | 18286 | L.A.K. | | R.H. |
| F | ADD. OR BRUSHED NICKEL TO FINISH | 8/24/66 | 16772 | CED | | |
| E | DIMS 1 11/32 MAX. WAS 1 9/16 REF D HOLES WERE 1/8 X 3/16 SLOT SPECS. TEST SCHEMATIC PICTORIAL REVISED | 6-28-63 | 9345 | | | |
| SYM | DESCRIPTION | DATE | CH. NO. | DRAFTS | CHECKER | ENG. APP. |
| UNLESS OTHERWISE SPECIFIED: | | SCALE: DO NOT SCALE (S401-95) | | | | |
| DIMENSIONS ARE IN INCHES | | MAXIMUM ALLOWABLE TOLERANCES HAVE BEEN DETERMINED AND ANY DEVIATIONS WILL BE CAUSE FOR REJECTION. | | | | |
| TOLERANCES ON FRACTIONS ± 1/64 DECIMALS ± .005 ANGLES ± 1/2° | | REMOVE ALL BURRS AND SHARP EDGES | | | | |

| 1 | HFI-1 | | | 9-6-61 |
|---------------|-------|---------|-----------|--------|
| 1 | SBS-1 | | | 9-6-61 |
| REQ. PER UNIT | MODEL | SECTION | ASSY. NO. | DATE |
| | | | | |

| REQ. ITEM | PART NO. | M. GELLMAN | DESCRIPTION | SYMBOL |
|-----------|--|------------|---|-----------------|
| | | | THE TECHNICAL MATERIEL CORP. MAMARONECK, NEW YORK | |
| | BRASS | | FILTER, ASYMMETRICAL CRYSTAL | |
| | | | 3.5 KC UPPER SIDEBAND | |
| | HOT TIN DIP | | | |
| | TYPE & TEMPER | | DRAWN | CHECKER |
| | HEAT TREAT. SPEC. | | | |
| | 5115TMC SMOOTH GRAY ENAMEL OR BRUSHED NICKEL | | | |
| | FINISH & SPEC. NO. | | ELEC. DES. APP. | MECH. DES. APP. |
| | | | FX-168 | H |

STANDARD DRAWING