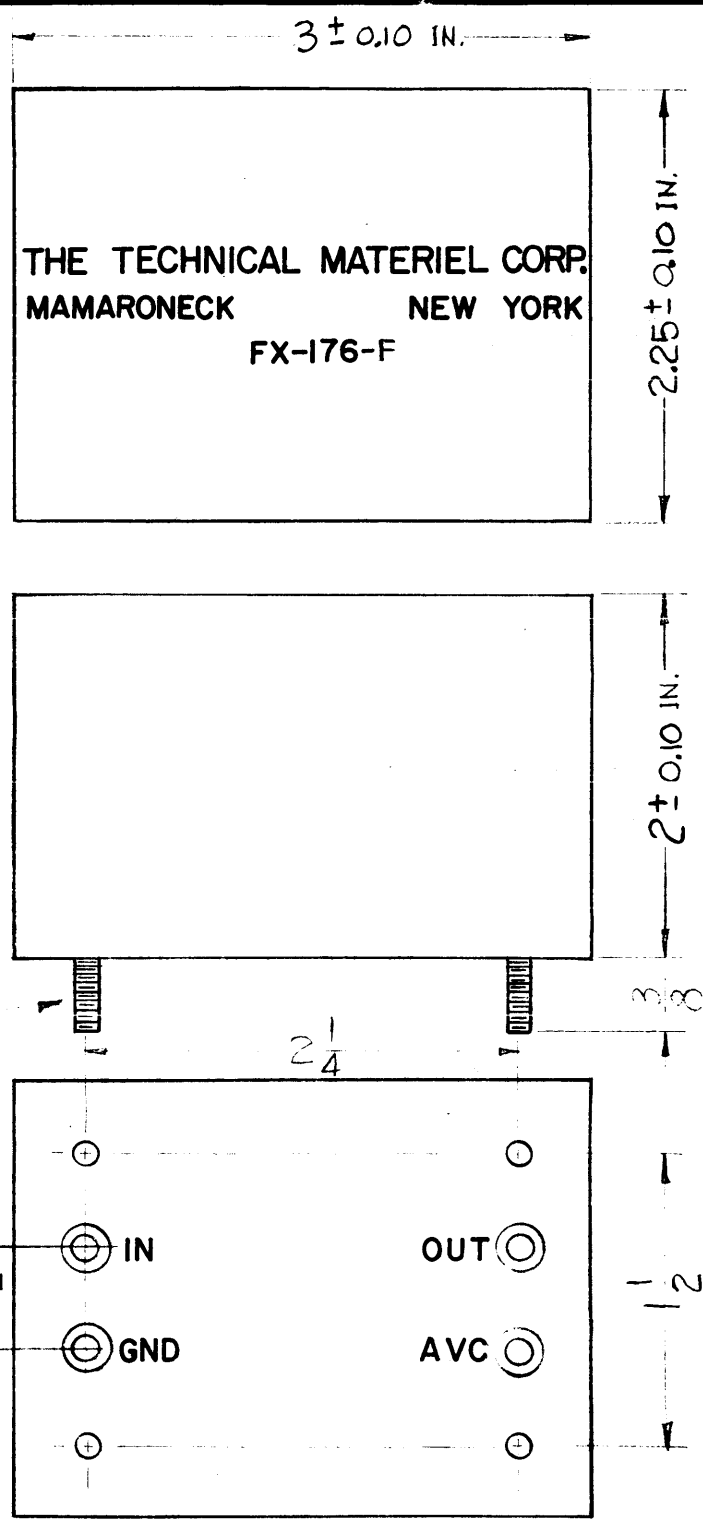
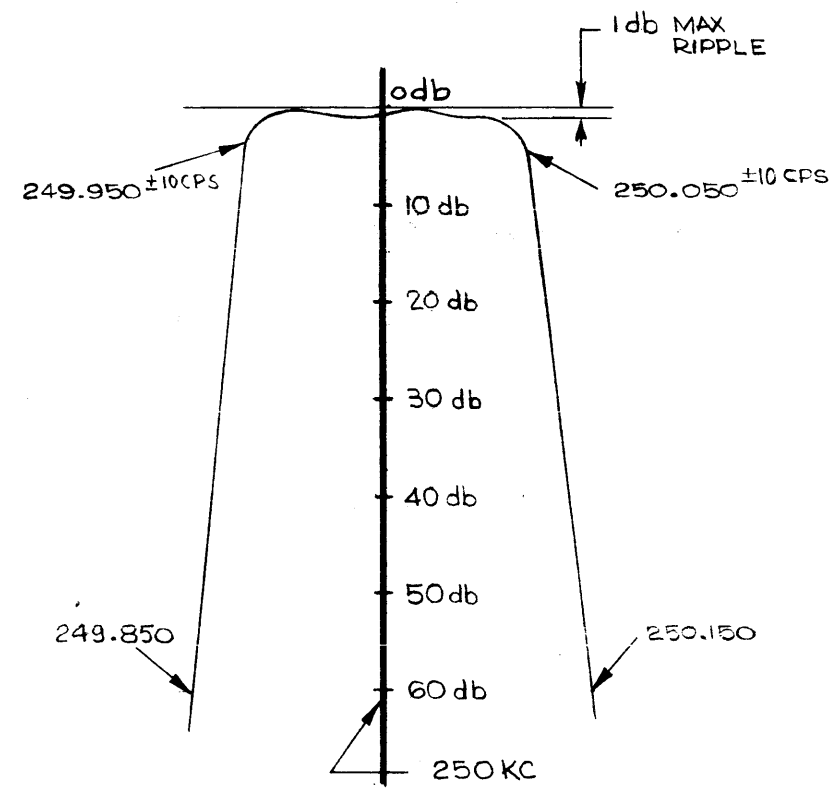


FX-176 F.



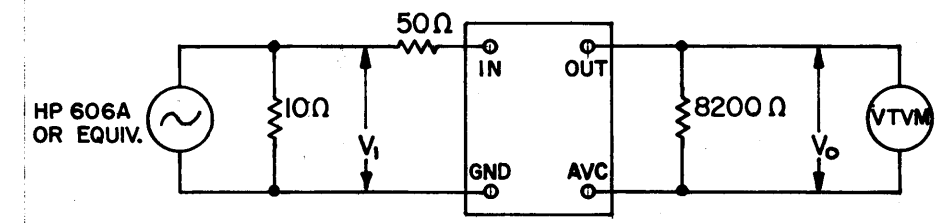
THE TECHNICAL MATERIEL CORP.
MAMARONECK NEW YORK
FX-176-F



ELECTRICAL SPECIFICATIONS

1. TYPE: SYMMETRICAL.
2. db MEASUREMENTS: ALL db MEASUREMENTS ARE RELATIVE TO MAXIMUM SIGNAL RESPONSE IN PASSBAND.
3. FREQUENCY: 250 KC.
4. -3 db POINTS: 250.050 KC +10 CPS, 249.950 +10 CPS
5. -60 db POINTS: 250.150 OR LESS, 249.850 OR GREATER.
6. ALL RETURN LOBES AND SPURIOUS SHALL BE -60 db OR GREATER.
7. MAXIMUM PASSBAND RIPPLE: 1 db.
8. INSERTION (LOSS OR GAIN): +11db MINIMUM.
9. INPUT IMPEDANCE: 50 OHMS.
10. OUTPUT IMPEDANCE: 8.2 K OHMS.
11. TEMPERATURE RANGE: 0° TO 70° C.

INSERTION (LOSS OR GAIN) = ±(V_O-V_I) IN db.



BALLANTINE MOD. 314

PERSONS RECEIVING THIS DRAWING

THE TECHNICAL MATERIEL CORPORATION claims proprietary right in the material disclosed hereon. This drawing is issued in confidence for engineering information only and may not be reproduced or used to manufacture anything shown hereon without permission from THE TECHNICAL MATERIEL CORPORATION to the user. This drawing is loaned for mutual assistance and is subject to recall at any time.

Property of:
THE TECHNICAL MATERIEL CORPORATION
MAMARONECK, NEW YORK
STANDARD DRAWING

| | | | | | | |
|---|--|---|---------|--------|---------|-----------|
| F | ELEC. SPECS. #4 & GRAPH ±10 CPS, MAX ±5 CPS, 2 PL. | 10-27-64 | 12760 | 9.2 | | |
| E | SPECS. #8 WAS 15 db MIN. 249.850 WAS 250.050 | 8-6-63 | 9725 | AC | | |
| D | SPECS. REVISED, TEST SCHEM & GRAPH ADDED | 7-1-63 | 9272 | | | |
| SYM | DESCRIPTION | DATE | CH. NO. | DRAFTS | CHECKER | ENG. APP. |
| UNLESS OTHERWISE SPECIFIED: | | SCALE: 3/4" = 1" | | | | |
| DIMENSIONS ARE IN INCHES | | MAXIMUM ALLOWABLE TOLERANCES HAVE BEEN DETERMINED AND ANY DEVIATIONS WILL BE CAUSE FOR REJECTION. | | | | |
| TOLERANCES ON FRACTIONS ± 1/64 DECIMALS ± .05 ANGLES ± 1/2° | | REMOVE ALL BURRS AND SHARP EDGES | | | | |

| | | | | |
|---------------|-------|---------|------------|---------|
| REQ. PER UNIT | MODEL | SECTION | ASS'Y. NO. | DATE |
| | AFC-2 | | | 8-15-61 |
| USED ON | | | | |

| REQ. | ITEM | PART NO. | DESCRIPTION | SYMBOL |
|------|------|--------------------|--|----------------|
| | | | THE TECHNICAL MATERIEL CORP. MAMARONECK, NEW YORK | |
| | | STOCK SIZE | | |
| | | STEEL CASE | FILTER, CRYSTAL, BANDPASS | |
| | | MATERIAL | 100 CPS | |
| | | TYPE & TEMPER | 5115 TMC GREY | |
| | | HEAT TREAT. SPEC. | | |
| | | DRAWN | CHECKER | FINAL APPROVAL |
| | | | | TFH 7.3.63 |
| | | FINISH & SPEC. NO. | ELEC. DES. APP. MECH. DES. APP. | FX-176 F |