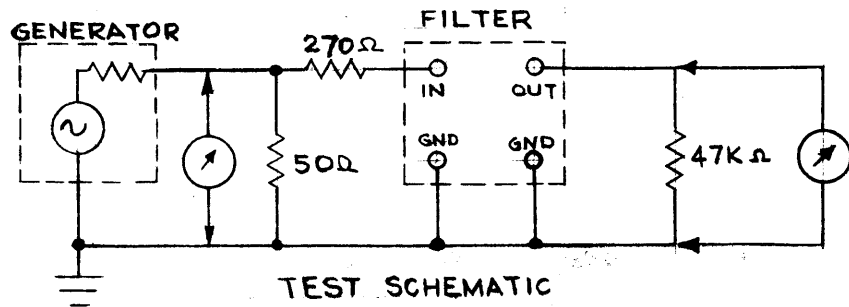
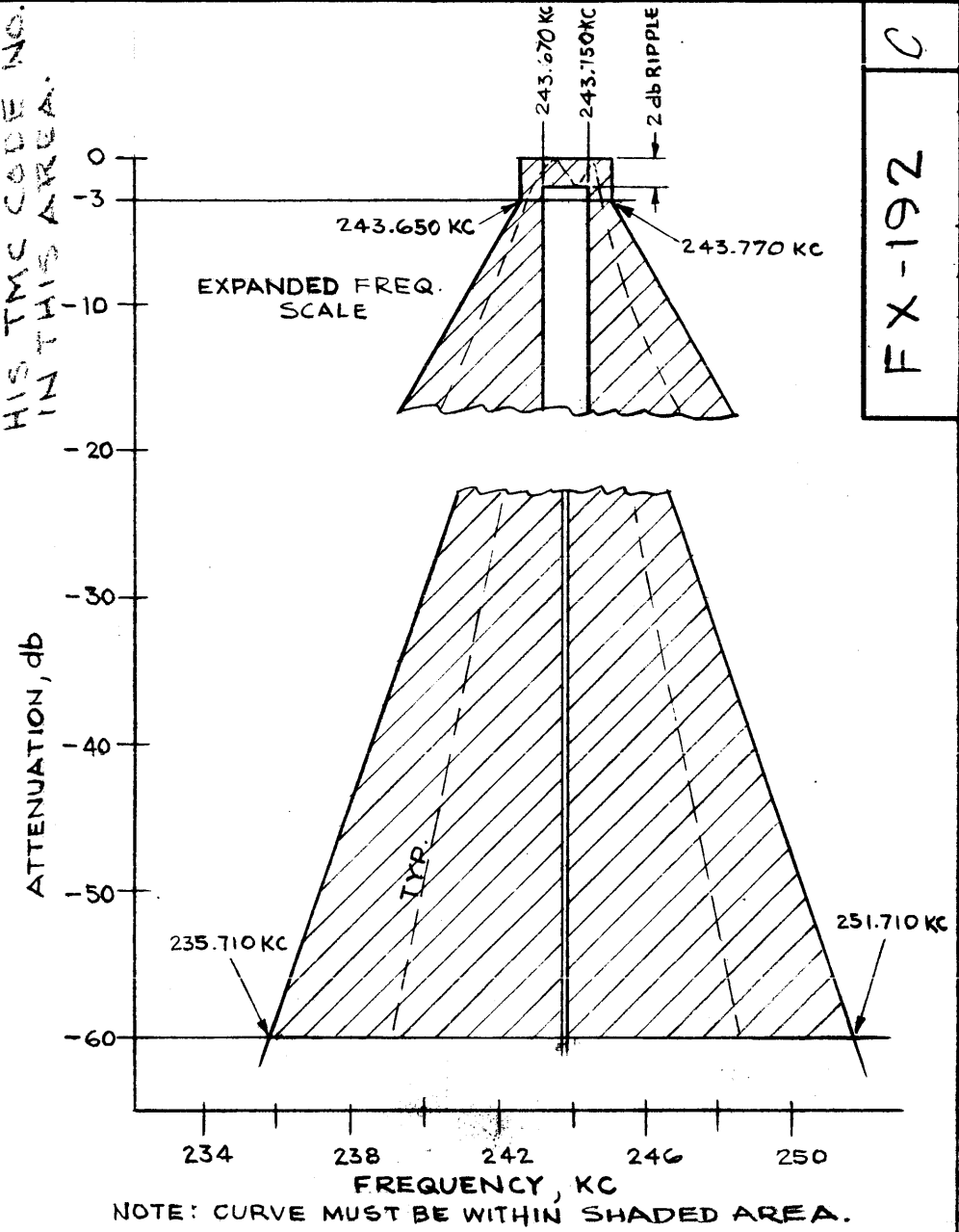
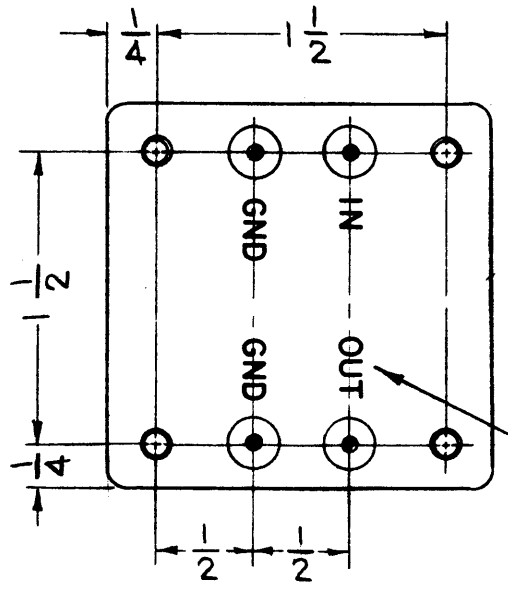
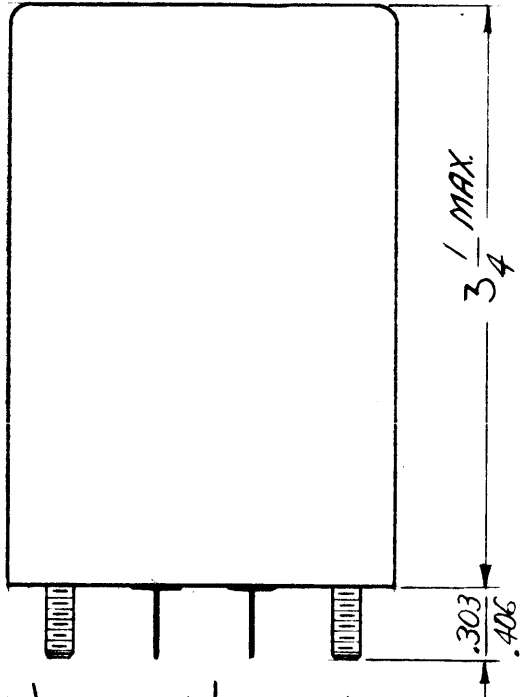


MEGR TO INSERT HIS TMC CODE NO. IN THIS AREA.



STANDARD DRAWING

1	MCG-1	
QTY./UNIT	MODEL USED ON	ASSY. NO.
SCALE 1:1	CODE C	S401-210

THE CONTENTS OF THIS DRAWING ARE THE EXCLUSIVE PROPERTY OF THE TECHNICAL MATERIEL CORP. ITS UNAUTHORIZED USE OR REPRODUCTION IN WHOLE OR IN PART IS STRICTLY FORBIDDEN.

C
FX-192

REVISIONS

SYM	DESCRIPTION	DATE	E.M.N. NO.	DRAFT	CHKD	APPD
X1	CHANGED AS PER REQUEST OF S401-95	1/20/63		TR		<i>TJA</i>
X2	REVISED FREQUENCY RESP NSE CURVE & ELECT. SPEC. ADDED TEST SCHEMATIC	1/27/64		T.R		<i>TJA</i>
O	ORIGINAL RELEASE FOR PRODUCTION	2/28/64		A.M.		<i>TJA</i>
A	REVERSED POS. OF 243.765 KC & 243.755 KC AT -3DB	3-11-64	11034	A.M.	<i>Jul</i>	<i>TJA</i>
B	ELEC. SPECS #5, ±10 CPS. WAS ±5 CPS. 2 PL. ON GRAPH, 243.650 WAS...655 243.670 WAS...665 243.750 WAS...755 243.770 WAS...765.	10-27-64	12768	J.P.	<i>Jul</i>	<i>TJA</i>
C	.303 WAS 3/8 LONG. FINISH, ADDED POWDER BLASTED NICKEL. 3/4 WAS 3.	3-20-67	18004	L.A.K	<i>Jul</i>	<i>ATB</i>

ELECTRICAL SPECIFICATIONS

- NOTE: ALL MEASUREMENTS TAKEN RELATIVE TO MAXIMUM OUTPUT IN PASSBAND
- TYPE: BANDPASS, 100 CYCLE 3 db POINTS
 - CENTER FREQUENCY: 243.710 KC
 - TRAILING SLOPE: -30db @ 250KC OR LESS, -60db @ 251.710 KC OR LESS
 - LEADING SLOPE: -60 db @ 235.710 KC OR MORE
 - 3 db POINTS: 243.760 KC ±10 CPS, 243.660 KC ±10 CPS
 - MAX. PASSBAND VARIATIONS: 2 db
 - RETURN LOBES: ATTENUATED GREATER THAN 60db
 - FILTER INSERTION GAIN: 13 db ±1db
 - INPUT IMPEDANCE: 300 Ω
 - OUTPUT IMPEDANCE: 47,000 Ω
 - TEMPERATURE RANGE: 0°C. TO 70°C.

MECHANICAL SPECIFICATIONS

- CASE: STEEL, HERMETICALLY SEALED.
- TERMINAL DATA: (4) MINIATURE SINGLE TERMINALS, GLASS INSULATED WITH .032-.040 DIA. WIRE LEADS, 3/8 LONG
- MOUNTING DATA: (4) 6-32 THD. STUDS, .303/.406 LONG
- FINISH DATA: S115 TMC GREY ENAMEL, OR POWDER BLASTED NICKEL.

REQ'D.	ITEM	PART NUMBER	DESCRIPTION	SYMBOL
--------	------	-------------	-------------	--------

AALTONEN	LIST OF MATERIAL
MATERIAL SEE MECH. SPEC.	THE TECHNICAL MATERIEL CORP. MAMARONECK, NEW YORK
FINISH SEE MECH. SPEC.	TITLE FILTER, BANDPASS, CRYSTAL

UNLESS OTHERWISE SPECIFIED DIMENSIONS ARE IN INCHES AND INCLUDE CHEMICALLY APPLIED OR PLATED FINISHES	DRAWN <i>T. Ramirez</i>	DATE 12/19/63	FINAL APPROVAL <i>RAC</i>	DATE 3/2/64
DECIMALS .X ± .05 .XX ± .01 .XXX ± .05	TOLERANCES	FRACTIONS ± 1/64 ANGLES ± 0° 30'	ELECT. DES. <i>T. Ramirez</i>	DATE 12/19/63
			MECH. DES. <i>T. Ramirez</i>	DATE 2-17-64
			SHEET FX-192	
				REV. LTR. C

NOTES

STAMP AS SHOWN, 1/8 HIGH BLACK GOTHIC