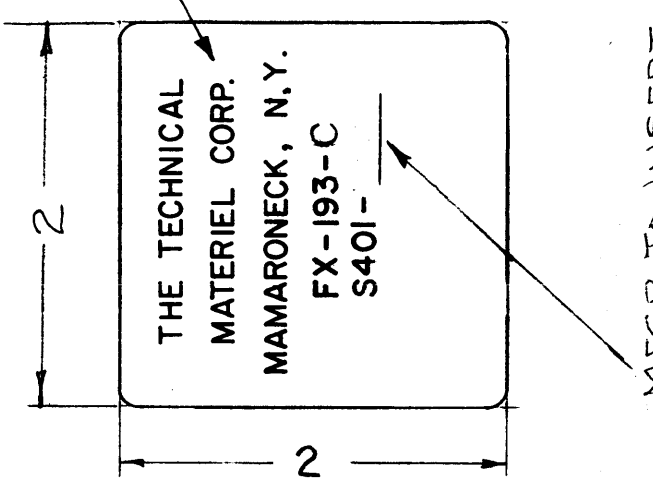
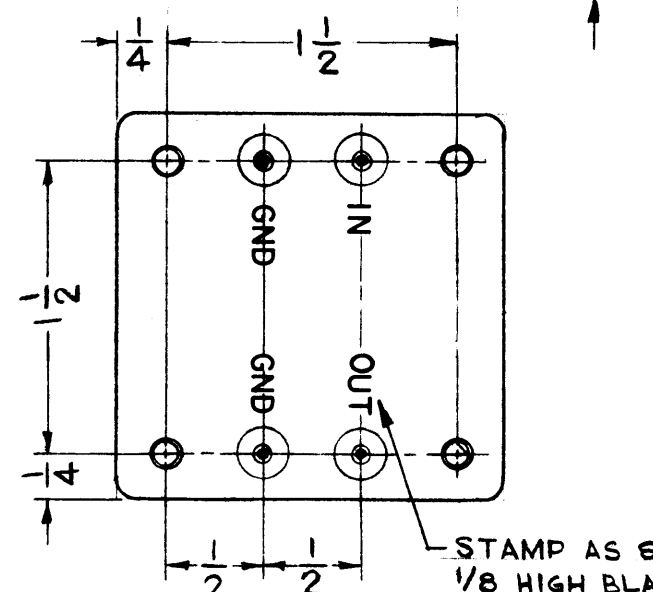
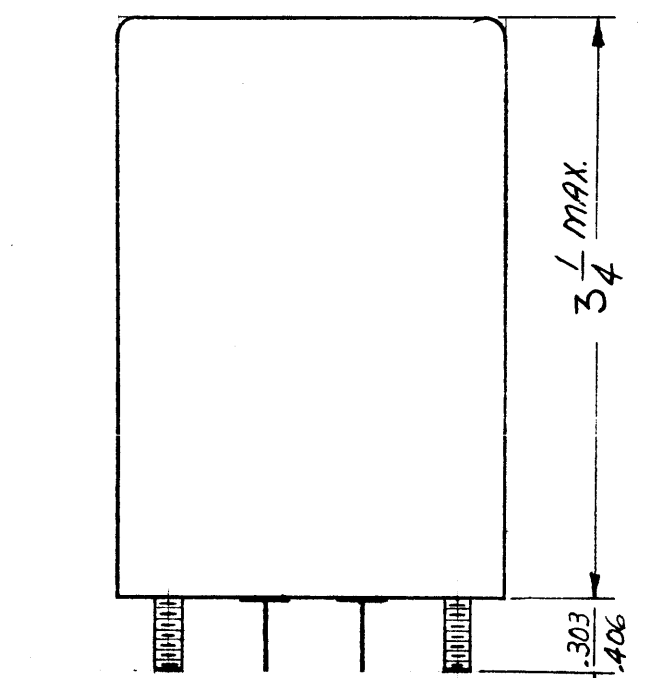


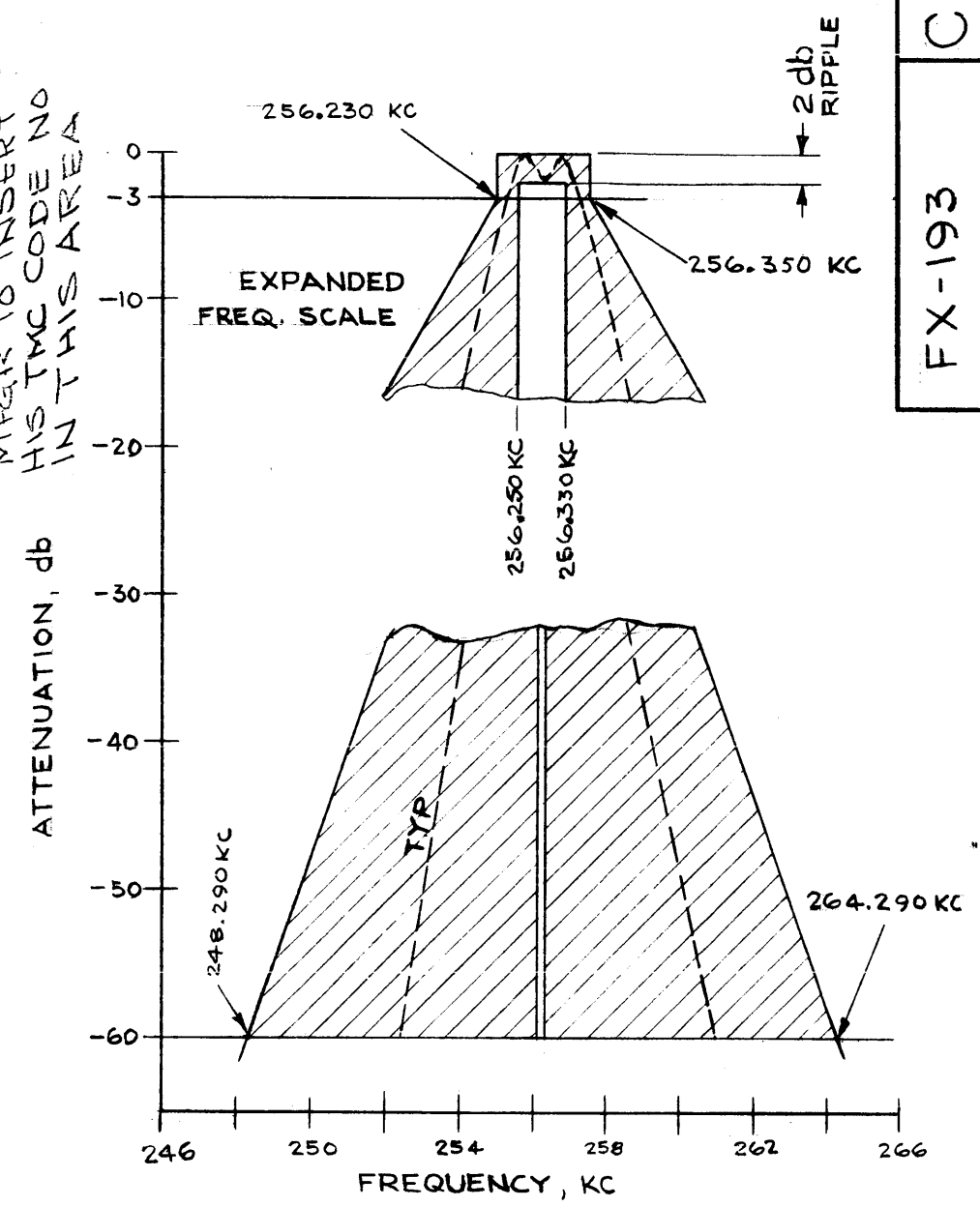
STAMP AS SHOWN  
1/8 HIGH BLACK GOTHIC



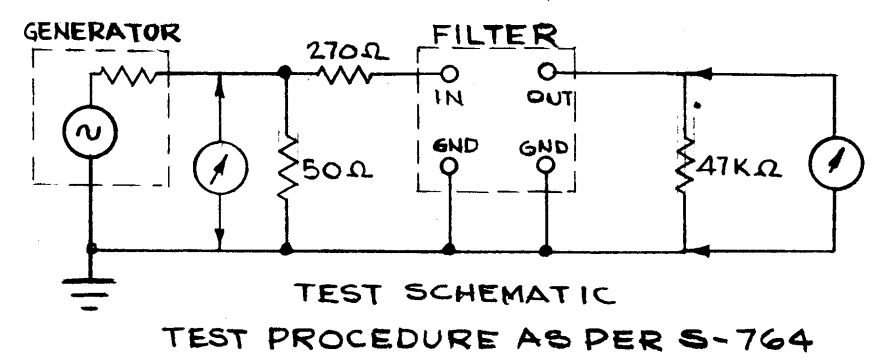
REFER TO INSERT  
HIS TMC CODE NO  
IN THIS AREA



NOTES



NOTE: CURVE MUST BE WITHIN SHADED AREA.



1	MCG-1	
QTY./UNIT	MODEL USED ON	ASSY. NO.
SCALE 1:1	CODE C	S401-210

THE CONTENTS OF THIS DRAWING ARE THE EXCLUSIVE PROPERTY OF THE TECHNICAL MATERIEL CORP. ITS UNAUTHORIZED USE OR REPRODUCTION IN WHOLE OR IN PART IS STRICTLY FORBIDDEN.

C  
FX-193

REVISIONS						
SYM	DESCRIPTION	DATE	E.M.N. NO.	DRAFT	CHKD	APPD
X1	CHANGED AS PER REQUEST OF S401-95	12/20/63		T.R.		JAW
X2	REVISED CURVE & ELECTRICAL SPEC. ADDED TEST - SCHEMATIC	1/29/64		TR		JRC
O	ORIGINAL RELEASE FOR PRODUCTION	2/28/64		A.M.		
A	ELEC. SPECS. #5, ±10 CPS. WAS ±5 CPS. 2 PL. ON GRAPH, 256.230 WAS...235. 245.250 WAS...245. 256.330 WAS...335. 256.350 WAS...345.	10-27-64	12768	J.F.		
B	Mech. Spec. (Add OR Nickel Finish (Brushed))	7/15/66	16565	C.V.		
C	303 WAS 3/8, 3/4 WAS 3. FINISH, ADDED POWDER BLASTED NICKEL. REMOVED BRUSHED NICKEL.	3-20-67	18004	L.A.K.		

ELECTRICAL SPECIFICATIONS

- NOTE: ALL MEASUREMENTS TAKEN RELATIVE TO MAXIMUM OUTPUT IN PASSBAND
- TYPE: BANDPASS, 100 CYCLE
  - CENTER FREQUENCY: 256.290 KC
  - TRAILING SLOPE: -60 db @ 264.290 KC OR LESS
  - LEADING SLOPE: -30 db @ 250 KC OR MORE, -60 db @ 248.290 KC OR MORE
  - 3 db POINTS: 256.340 KC ±10 CPS, 256.240 KC ±10 CPS
  - MAXIMUM PASSBAND VARIATION: 2 db
  - RETURN LOBES: ATTENUATED GREATER THAN 60 db
  - FILTER INSERTION GAIN: 13 db ± 1db
  - INPUT IMPEDANCE: 300 Ω
  - OUTPUT IMPEDANCE: 47,000 Ω
  - TEMPERATURE RANGE: 0°C. TO 70°C

MECHANICAL SPECIFICATIONS

- CASE: STEEL, HERMETICALLY SEALED
- TERMINAL DATA: (4) MINIATURE SINGLE TERMINALS, GLASS INSULATED WITH .032-.040 DIA. WIRE LEADS, 3/8 LONG
- MOUNTING DATA: (4) 6-32 THD. STUDS, .303 LONG
- FINISH DATA: S115 TMC GREY ENAMEL OR POWDER BLASTED NICKEL.

STANDARD DRAWING

REQ'D.	ITEM	PART NUMBER	DESCRIPTION	SYMBOL
AALTONEN LIST OF MATERIAL				
MATERIAL		SEE MECH. SPEC.	THE TECHNICAL MATERIEL CORP. MAMARONECK, NEW YORK	
FINISH		SEE MECH. SPEC.	TITLE FILTER, BANDPASS, CRYSTAL	
UNLESS OTHERWISE SPECIFIED DIMENSIONS ARE IN INCHES AND INCLUDE CHEMICALLY APPLIED OR PLATED FINISHES			DRAWN T. RAMIREZ DATE 12/18/63 CHECKED J. Torres DATE 2-17-64 ELECT. DES. J.H. Galtman DATE 12/18/63 MECH. DES. J.C. Green DATE	FINAL APPROVAL RJC DATE 2/7/64 FX-193 C SHEET REV. LTR.

STANDARD DRAWING