

FX220 B

REVISIONS						
SYM	DESCRIPTION	DATE	E.M.N. NO.	DRAFT	CHKD	APPD
Ø	ORIGINAL RELEASE FOR PRODUCTION	3.15.65	X	hps	JP	MM
A	DIM 2'8 WAS 2.125, 3/4 WAS 0.750, TO FINISH ADD OR S115 TMC GRAY	10.4.66	16980	WAW	JP	MM
B	PICT, ADD MARKING "IN GRD" "OUT GRD"	3-20-67	18005	L.H.K.	JP	MM

ELECTRICAL SPECIFICATIONS

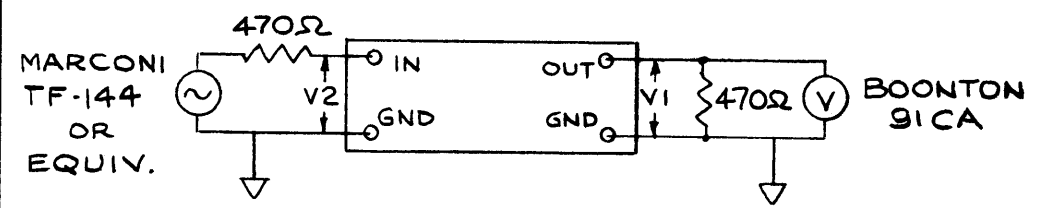
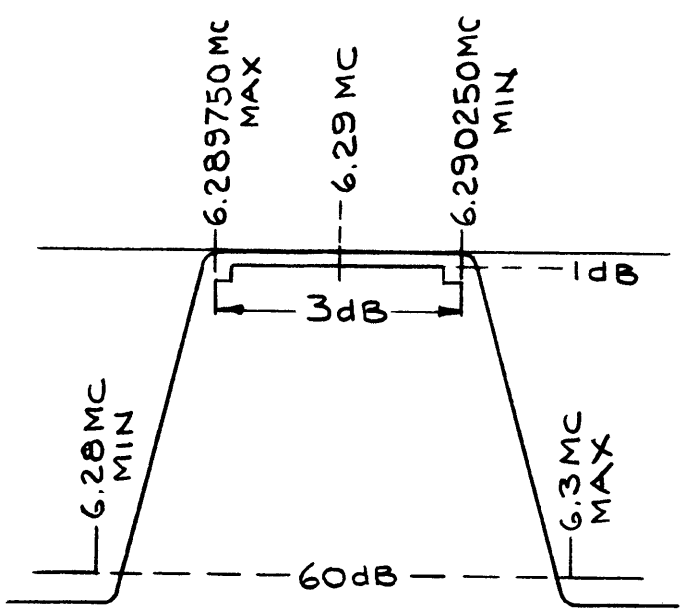
3 db B.W.: 6,289,750 cps MAX.
 6,290,250 cps MIN.
 60 db B.W.: 6.28 MCS MIN.
 6.30 MCS MAX.
 SOURCE IMPEDANCE: 470 Ω ±10%
 LOAD IMPEDANCE: 470 Ω ±10%
 INSERTION LOSS: 6db MAX.
 PEAK TO VALLEY RATIO: 1db MAX.

ENVIRONMENTAL REQUIREMENTS:

OPERATING TEMPERATURE RANGE: 0 TO 50°C

MECHANICAL REQUIREMENTS:

UNIT TO BE HERMETICALLY SEALED
 DIMENSIONS: SEE FIG. II
 FINISH: POWDER BLASTED NICKEL OR S115 TMC GRAY
 MATERIAL: .020 BRASS
 MARKING: BLACK EPOXY INK



TEST CIRCUIT

REQ'D.	ITEM	PART NUMBER	DESCRIPTION	SYMBOL
POSE				
MATERIAL			LIST OF MATERIAL	
SEE NOTES			THE TECHNICAL MATERIEL CORP. MAMARONECK, NEW YORK	
FINISH			TITLE	
SEE NOTES			FILTER, CRYSTAL 6.290 MC BAND PASS CRYSTAL FILTER 3db BW 500 CPS MIN.	
UNLESS OTHERWISE SPECIFIED DIMENSIONS ARE IN INCHES AND INCLUDE CHEMICALLY APPLIED OR PLATED FINISHES			DRAWN	DATE
			hps	3.15.65
			CHECKED	DATE
			JP	5/14/65
			ELECT. DES.	DATE
			JP	5/14/65
			MECH. DES.	DATE
			FINAL APPROVAL	
			MM	
			DATE	
			5/14/65	
			FX220	
			B	
			SHEET	
			REV. LTR.	

NOTES

THE CONTENTS OF THIS DRAWING ARE THE EXCLUSIVE PROPERTY OF THE TECHNICAL MATERIEL CORP. ITS UNAUTHORIZED USE OR REPRODUCTION IN WHOLE OR IN PART IS STRICTLY FORBIDDEN.

Q'TY./UNIT	MODEL USED ON	ASS'Y. NO.
SCALE	CODE	
1:1	C	

DECIMALS	FRACTIONS
.X ± .05	± 1/64
.XX ± .01	ANGLES
.XXX ± .005	± 0° 30'