

FX 239

REVISIONS					
SYM	DESCRIPTION	DATE	E.M.N. NO.	DRAFT	CHKD APPD
X1	SPECS & GRAPH CLARIFIED	5/16/66	X1	JA	file
Ø	ORIGINAL RELEASE FOR PRODUCTION	5/17/66	Ø	CV	file
A	"OR GLASS" ADDED TO TERM INS	9.30.66	16923	WHD	file

ELECTRICAL SPECIFICATIONS:

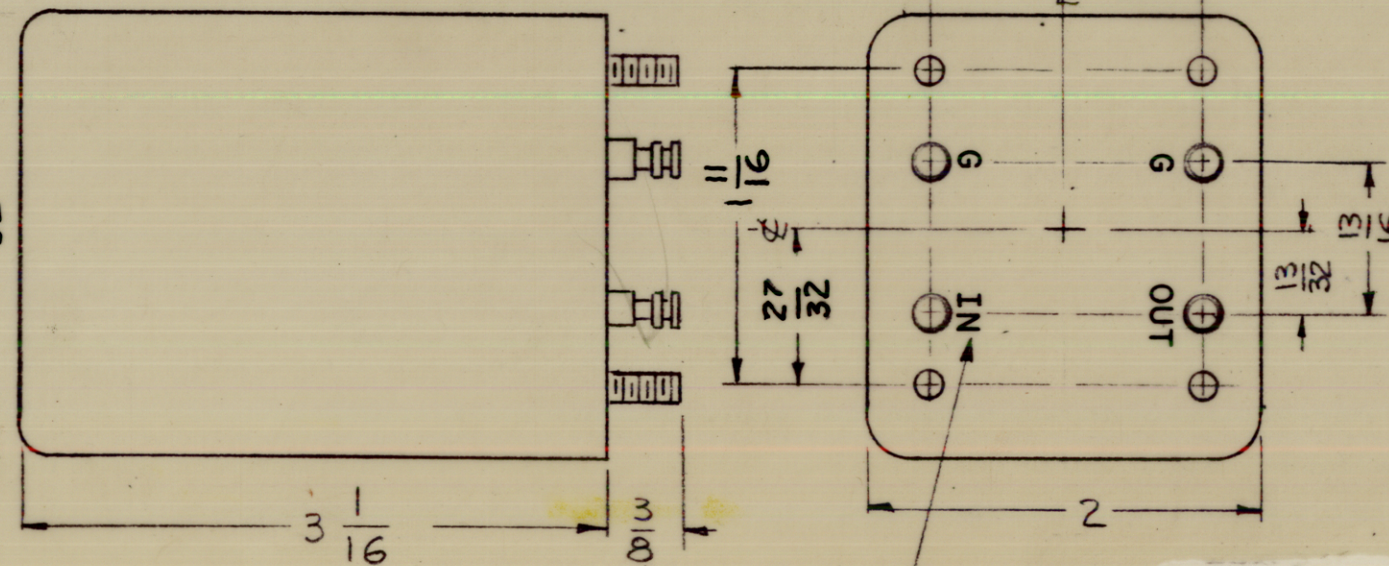
1. TYPE: UPPER SIDEBAND
2. DB MEASUREMENTS: ALL DB MEASUREMENTS ARE RELATIVE TO MAXIMUM SIGNAL RESPONSE IN THE PASS BAND.
3. CARRIER FREQUENCY: 250.000 KCS.
4. CARRIER SUPPRESSION: AT LEAST 55DB.
5. -1DB POINTS: NOT LOWER THAN 256.080 & NOT HIGHER THAN 250.250KC
6. -60DB POINTS: 250.000 KCS MINIMUM AND 256.500KCS MAX.
7. INSERTION LOSS 10DB MAXIMUM
8. INPUT IMPEDANCE: 10K OHMS UNBALANCED.
9. OUTPUT IMPEDANCE: 10K OHMS UNBALANCED.
10. PASS BAND RESPONSE VS. TEMPERATURE:
 - ±0.5db FROM +15°C TO +55°C
 - ±1.5db FROM -30°C TO +15°C
 - ±3.0db FROM -40°C TO -30°C

NOTE: CHANNEL DESIGNATION REFERS TO 250.000 KCS FURTHER SIDEBAND INVERSIONS MUST BE TAKEN INTO ACCOUNT IN DETERMINING THE FINAL CHANNEL DESIGNATION.

MECHANICAL SPECIFICATIONS:

CASE: STEEL
 FINISH: TMC GRAY (S-115) OR POWDER BLASTED BRIGHT NICKEL
 NOTE: TERMINAL END UNPAINTED
 MOUNTING: 6-32 X 3/8 STUDS (4 required)
 TERMINAL: DOUBLE END PIN TYPE, BRASS, SILVER PLATED, TEFLON OR GLASS INSULATED

FX 239
 UPPER SIDE BAND
 FILTER
 THE TECHNICAL MATERIEL
 CORPORATION
 MAMARONECK NEW YORK



MARKING PROCESS: AS PER TMC SPECIFICATION S-727.

NOTES

1	SBE-10	
QTY./UNIT	MODEL USED ON	ASS'Y. NO.
SCALE 1:1	CODE C	

THE CONTENTS OF THIS DRAWING ARE THE EXCLUSIVE PROPERTY OF THE TECHNICAL MATERIEL CORP. ITS UNAUTHORIZED USE OR REPRODUCTION IN WHOLE OR IN PART IS STRICTLY FORBIDDEN.

O. POSE		LIST OF MATERIAL			
MATERIAL		THE TECHNICAL MATERIEL CORP. MAMARONECK, NEW YORK			
FINISH		TITLE FILTER, BANDPASS UPPER SIDE BAND - 6KC			
UNLESS OTHERWISE SPECIFIED DIMENSIONS ARE IN INCHES AND INCLUDE CHEMICALLY APPLIED OR PLATED FINISHES		DRAWN G.O.L.	DATE 8-10-65	FINAL APPROVAL [Signature] DATE 5/18/66	
DECIMALS .X ± .05 .XX ± .01 .XXX ± .005		CHECKED [Signature]	DATE	ELECT. DES. DATE	
FRACTIONS ± 1/64 ANGLES ± 0° 30'		MECH. DES. DATE		FX 239 A	
TOLERANCES		SHEET		REV. LTR.	