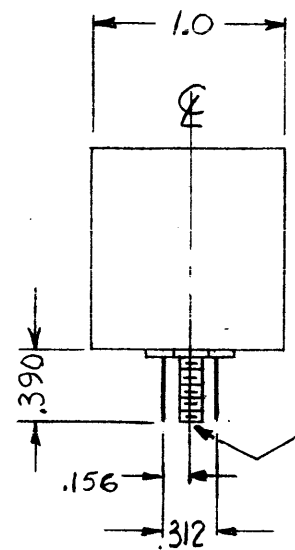
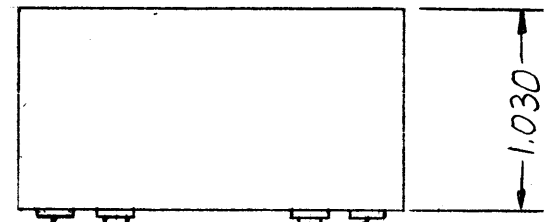
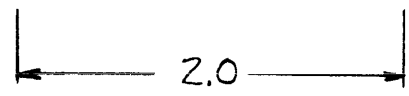
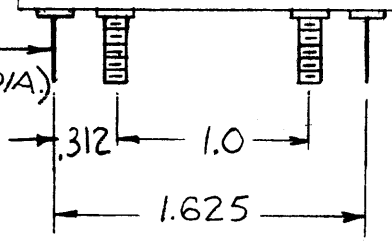


REVISIONS						
ZONE	LTR	DESCRIPTION	DATE	E.M.N.NO	DRAFT	CHKD
	X	EXP. RELEASE	2.29.68	+	AS.	AS.
	Ø	ORIG. RELEASE FOR PROD.	3-15-68	Ø	R.G.	AS.
	A	THC MFGR CODE ADDED	3/20/68	A	AS.	AS.
	B	COMPLETELY REV.	4.16.68	18871	AS.	OP

**FX288
200CPS CRYSTAL
BANDPASS FILTER**

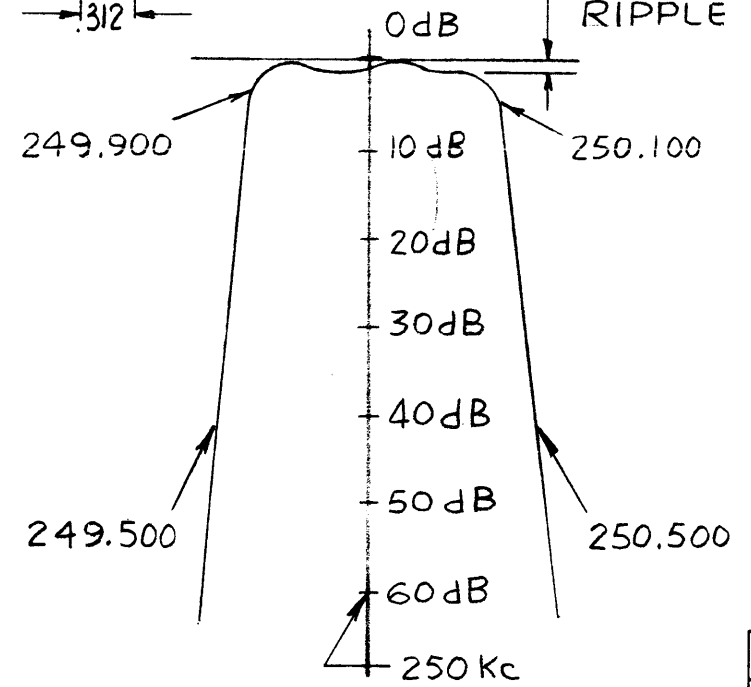


TERM PINS (.030 DIA.)
(4 REQ)

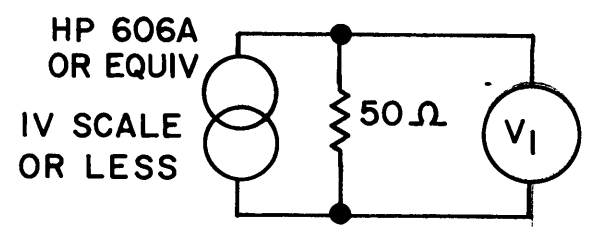
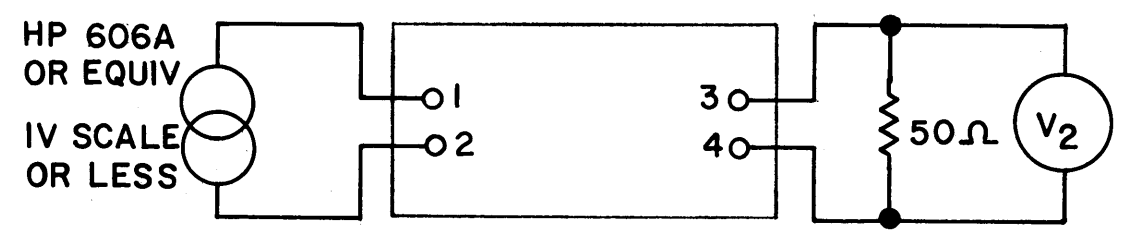


4-40 UNC 2A
MTG STUDS
(2 REQ)

3dB MAX
RIPPLE



INSERTION LOSS = $V_1 - V_2$ IN dB.



ELECTRICAL SPECIFICATIONS

- TYPE: SYMMETRICAL
- dB MEASUREMENTS: ALL dB MEASUREMENTS ARE RELATIVE TO MAXIMUM SIGNAL RESPONSE IN PASSBAND.
- FREQUENCY: 250 KC.
- 3dB POINTS: 250.100 KC OR GREATER, 249.900 KC OR LESS.
- 40dB POINTS: 250.500 OR LESS, 249.500 OR GREATER.
- ALL RETURN LOSSES AND SPURIOUS SHALL BE -40dB OR GREATER WITHIN THE RANGE IF ±10 KCS
- MAXIMUM PASSBAND RIPPLE: 3 dB
- INSERTION LOSS: 7 dB MAX
- INPUT IMPEDANCE: 50 OHMS
- OUTPUT IMPEDANCE: 50 OHMS
- TEMPERATURE RANGE: 0°C TO 50°C

REQ'D	ITEM	PART NUMBER	DESCRIPTION	SYM.
O. POSE LIST OF MATERIAL				
THE TECHNICAL MATERIEL CORP. MAMARONECK, NEW YORK				
FILTER, CRYSTAL, BANDPASS 200 CPS				
SIZE	CODE IDENT. NO.	DWG NO.	ISSUE	
B	82679	FX 288	B	
SCALE			SHEET OF	

1	MMX(-)-2	
QTY / UNIT	MODEL USED ON	ASS'Y NO.
APPLICATION		
	CODE	S401-308
NOTICE TO PERSONS RECEIVING THIS DRAWING THE TECHNICAL MATERIEL CORPORATION claims proprietary right in the material disclosed hereon. This drawing is issued in confidence for engineering information only and may not be reproduced or used to manufacture anything shown hereon without permission from THE TECHNICAL MATERIEL CORPORATION to the user. This drawing is loaned for mutual assistance and is subject to recall at any time.		
MATERIAL: STEEL CASE		
FINISH		

UNLESS OTHERWISE SPECIFIED DIMENSIONS ARE IN INCHES AND INCLUDE CHEMICALLY APPLIED OR PLATED FINISHES

DECIMALS: .X ± .05, .XX ± .01, .XXX ± .005
FRACTIONS: 1/64
TOLS. ANGLES: 0°-30'