

THE CONTENTS OF THIS DRAWING ARE THE EXCLUSIVE PROPERTY OF THE TECHNICAL MATERIEL CORP. ITS UNAUTHORIZED USE OR REPRODUCTION IN WHOLE OR IN PART IS STRICTLY FORBIDDEN.

REQ. PER UNIT

MODEL

HR-1

USED ON

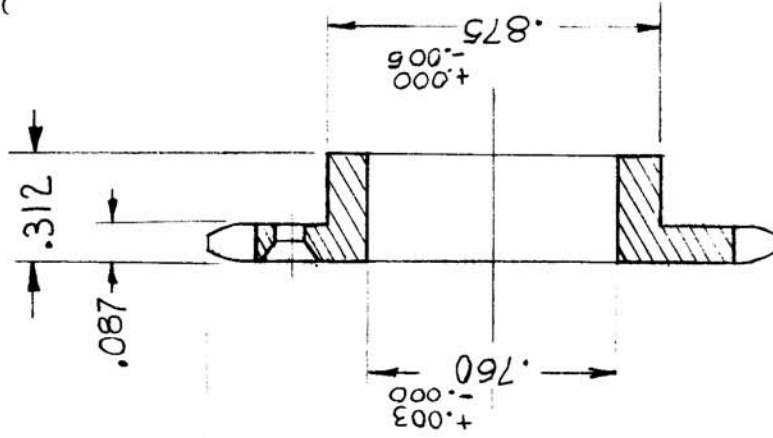
ASSY. NO.

GR-184

DATE

7-26-62

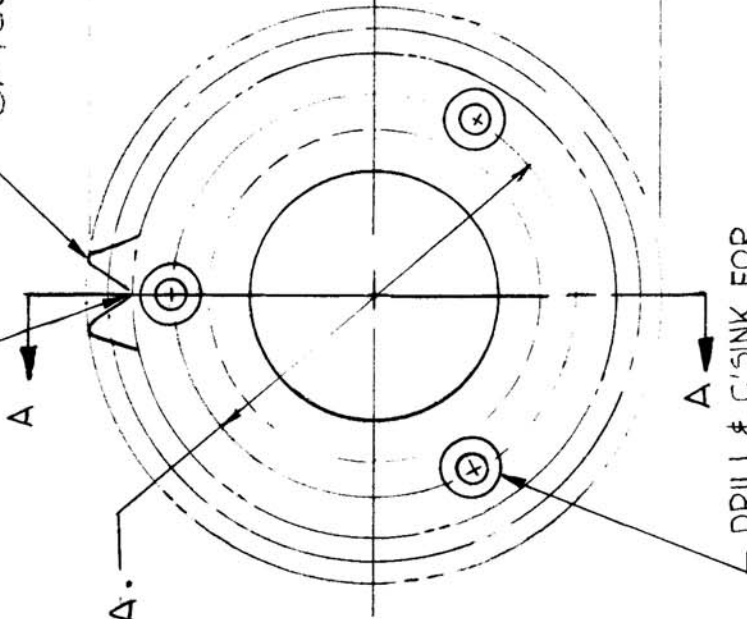
~ SPECIFICATIONS ~
 NO. OF TEETH = 24
 PITCH DIA. = 1.41



ROUND TOP OF TEETH

SHARP V CUT

1.031 DIA.



SECTION A-A

(BOSTON GEAR CA24 MODIFIED AS PER TMC)

REQ. ITEM	PART NO.	DESCRIPTION	SYMBOL
		KRUY	
		THE TECHNICAL MATERIEL CORP. MAMARONECK, NEW YORK	
		STEEL, STAINLESS	
		SPROCKET, WHEEL	
		# 303	
		G.D.L	
		6.D.L	
		TYPE & TEMPER	
		HEAT TREAT. SPEC.	
		S104 PASSIVATE	
		FINISH & SPEC. NO.	
		DATE	
		CH. NO.	
		DRAFTS	
		CHECKER	
		ENG. APP.	
		SCALE:	
		UNLESS OTHERWISE SPECIFIED:	
		DIMENSIONS ARE IN INCHES	
		TOLERANCES ON	
		FRAC. ± 1/64 DEC. ± .5 ANGLES ± 1/2°	
		REMOVE ALL BURRS AND SHARP EDGES	
		MAXIMUM ALLOWABLE TOLERANCES HAVE BEEN DETERMINED AND ANY DEVIATIONS WILL BE CAUSE FOR REJECTION.	
		CHECKED	
		DRAWN	
		FINAL APPROVAL	
		MECH. DES. APP.	
		ELEC. DES. APP.	
		GR-184	