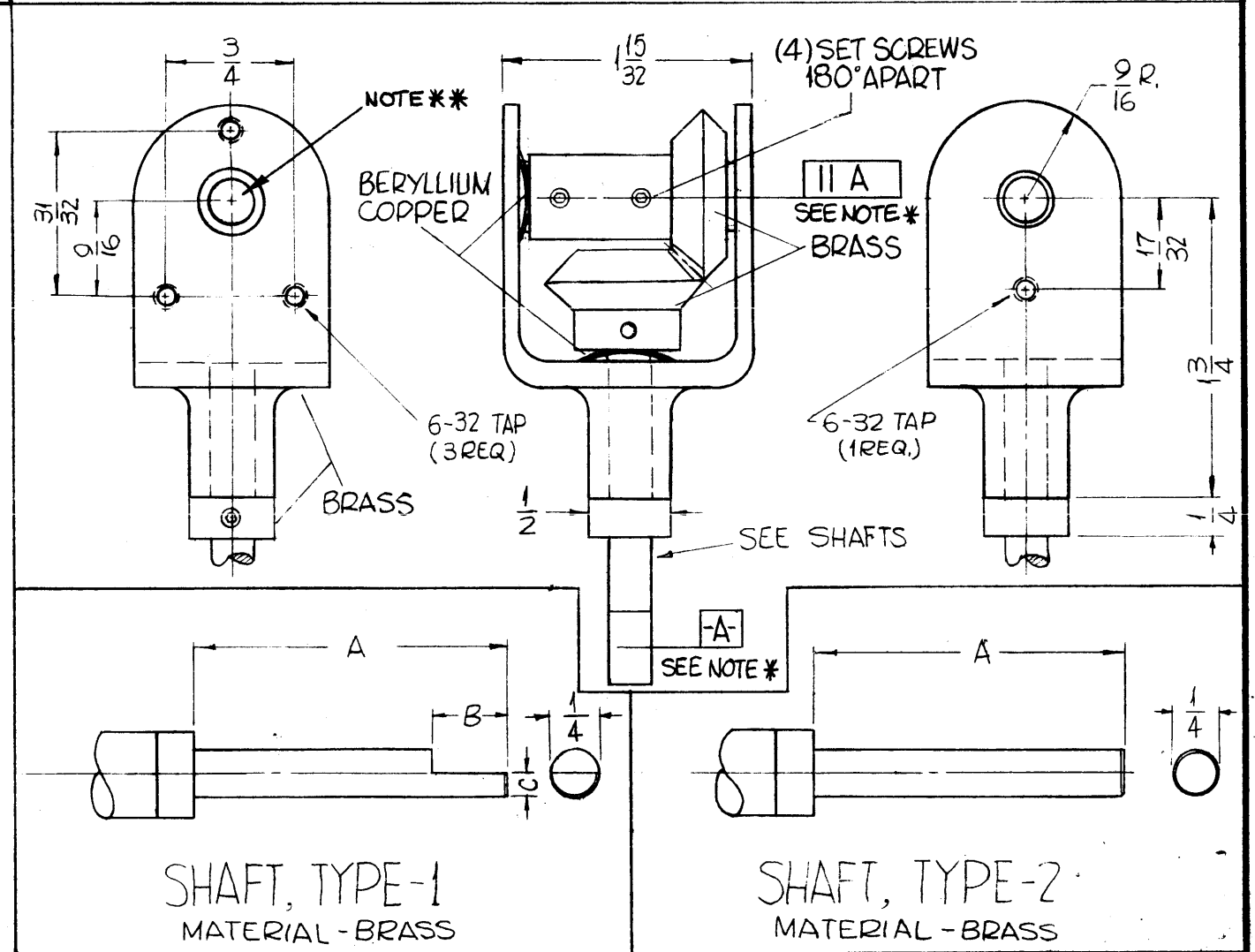


TMC NO.	USED ON	SHAFT TYPE	SHAFT DIMENSIONS		
			A	B	C
GR-189-1	TTR-10A	TYPE 1	1-3/32	23/32	.125 ^{+0.000} _{-0.005}
GR-189-2	AT-105	TYPE 2	1	—	—

A
GR-189

REVISIONS						
SYM	DESCRIPTION	DATE	E.M.N. NO.	DRAFT	CHKD	APPD
x5	GR-189-2 ADDED	4-6-64				
x6	NOTE * ADDED, S401-194 REF FOR MFG. ADDED					
0	ORIGINAL RELEASE FOR PRODUCTION	6-1-64	0	A.M.		
A	NOTE ** & CALLOUT "NOTE **" ADDED	10.29.64	12795	AB		JXC



NOTE *
SET SCREWS MUST BE PARALLEL IN RELATION TO FLAT ON SHAFT AS SHOWN.

NOTE **
HOLE DIA. ON GEAR BUSHING TO BE .253^{+0.003}_{-0.000} AFTER FINISHING

NOTES

Q'TY./UNIT	MODEL USED ON	ASS'Y. NO.
SCALE	CODE C	S401-194

THE CONTENTS OF THIS DRAWING ARE THE EXCLUSIVE PROPERTY OF THE TECHNICAL MATERIEL CORP. ITS UNAUTHORIZED USE OR REPRODUCTION IN WHOLE OR IN PART IS STRICTLY FORBIDDEN.

REQ'D.	ITEM	PART NUMBER	DESCRIPTION	SYMBOL
F. BUDETTI LIST OF MATERIAL				
MATERIAL			THE TECHNICAL MATERIEL CORP. MAMARONECK, NEW YORK	
FINISH			TITLE GEAR DRIVE, RIGHT ANGLE	
UNLESS OTHERWISE SPECIFIED DIMENSIONS ARE IN INCHES AND INCLUDE CHEMICALLY APPLIED OR PLATED FINISHES			DRAWN SRG	DATE 4-11-63
DECIMALS .X ± .05 .XX ± .01 .XXX ± .005			CHECKED aa	DATE 3/9/64
FRACTI NS ± 1/64 ANGLES ± 0° 30'			ELECT. DES. JB	DATE 3/6/64
TOLERANCES			MECH. DES. Kac	DATE 3/6/64
FINAL APPROVAL				DATE
GR-189				A
SHEET				REV. LTR.