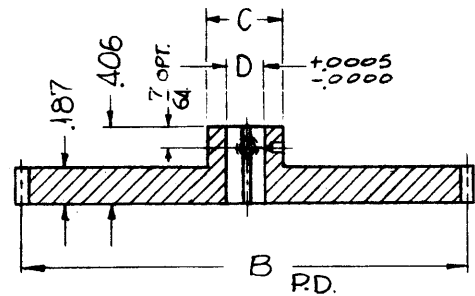
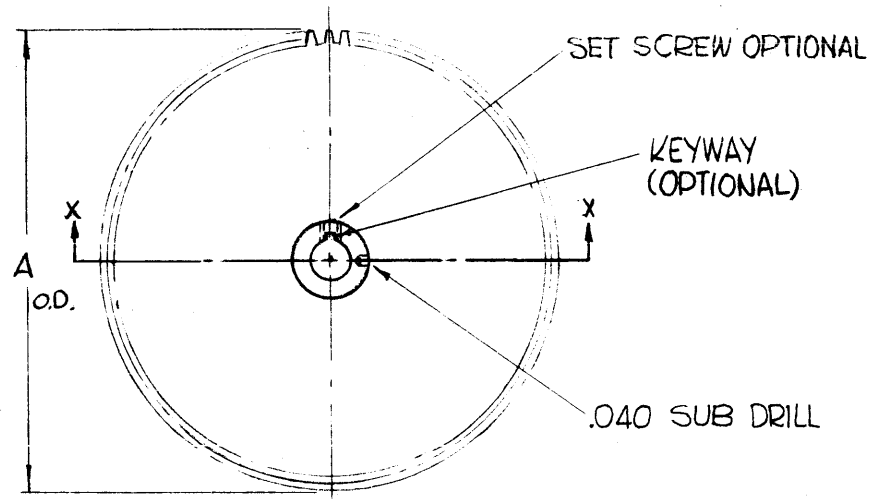


GR-197

THE CONTENTS OF THIS DRAWING ARE THE EXCLUSIVE PROPERTY OF THE TECHNICAL MATERIEL CORP. ITS UNAUTHORIZED USE OR REPR DDUCTION IN WHOLE OR IN PART IS STRICTLY FORBIDDEN.



SECTION X-X SHOWN

NOTE:  
PRECISION 1, GEARS

TMC PART NO	CAT. NO	NO. OF TEETH	A	B	C	D	MATERIAL	FINISH	KEYWAY	SET SCREW	USED ON
GR-197-1	*E30A-55	55	1.1875	1.1458	.750	.5000	ALUMINUM, 24ST	ANODIZED	1/8 WIDE X .070 DP	4-40	AX-395
GR-197-2	*E30A-55	55	1.1875	1.1458	.375	.1873	ALUMINUM, 24ST	ANODIZED	1/16 X .035 DP	4-40	AX-395
GR-197-3	*E30A-110	110	2.3333	2.2917	.375	.1873	ALUMINUM, 24ST	ANODIZED	1/16 X .035 DP	4-40	AX-395
GR-197-4	*E30A-22	22	.5000	.4583	.375	.1873	ALUMINUM, 24ST	ANODIZED	NONE	—	AX-395
GR-197-5	*E30A-20	20	.4583	.4167	.375	.1873	ALUMINUM, 24ST	ANODIZED	NONE	—	AX-395
GR-197-6	*E30A-30	30	.6667	.6250	.375	.1873	ALUMINUM, 24ST	ANODIZED	NONE	—	AX-395
GR-197-7	*E30A-55	55	1.1875	1.1458	.375	.1873	ALUMINUM, 24ST	ANODIZED	NONE	—	AX-395

\* MODIFIED

0	ORIGINAL RELEASE FOR PRODUCTION	4/3/64				
X3	ON GR-197-2,3 KEYWAY WAS .070 DEEP	2-12-64				
X2	SET SCREW COLUMN ADDED	10-14-63				
X1	KEYWAY ADDED	10-9-63				
SYM	DESCRIPTION	DATE	CH. NO.	DRAFTS	CHECKER	ENG. APP.
UNLESS OTHERWISE SPECIFIED:		SCALE: S401-196				
DIMENSIONS ARE IN INCHES		MAXIMUM ALLOWABLE TOLERANCES HAVE BEEN DETERMINED AND ANY DEVIATIONS WILL BE CAUSE FOR REJECTION.				
TOLERANCES ON FRACTIONS ± 1/64 DECIMALS ± .005 ANGLES ± 1/20		REMOVE ALL BURRS AND SHARP EDGES				

REQ.	ITEM	PART NO.	DESCRIPTION	SYMBOL
			THE TECHNICAL MATERIEL CORP. MAMARONECK, NEW YORK	
			GEAR, SPUR	
			SEE CHART	
			MATERIAL	
			SRG	4-6-64
			TYPE & TEMPER	
			HEAT TREAT. SPEC.	
			DRAWN	
			CHECKED	
			FINAL APPROVAL	
			SEE CHART	
			FINISH & SPEC. N	
			ELEC. DES. APP.	
			MECH. DES. APP.	
			GR-197	0