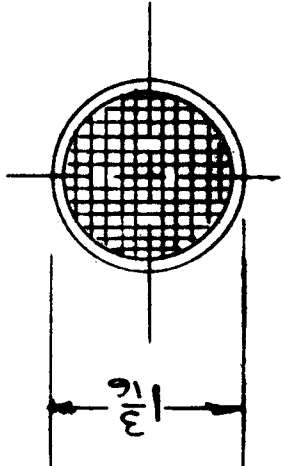






IF IT IS FOUND DESIRABLE TO CHANGE ANY TOLERANCE OR OTHER DETAIL SPECIFIED ON THIS DRAWING NOTIFY THE PURCHASER PROMPTLY.

MAXIMUM ALLOWABLE TOLERANCES HAVE BEEN DETERMINED AND DEVIATIONS WILL BE CAUSE FOR REJECTION. REMOVE ALL BURRS AND SHARP EDGES



HOLE SIZE 1"

HB-103 B

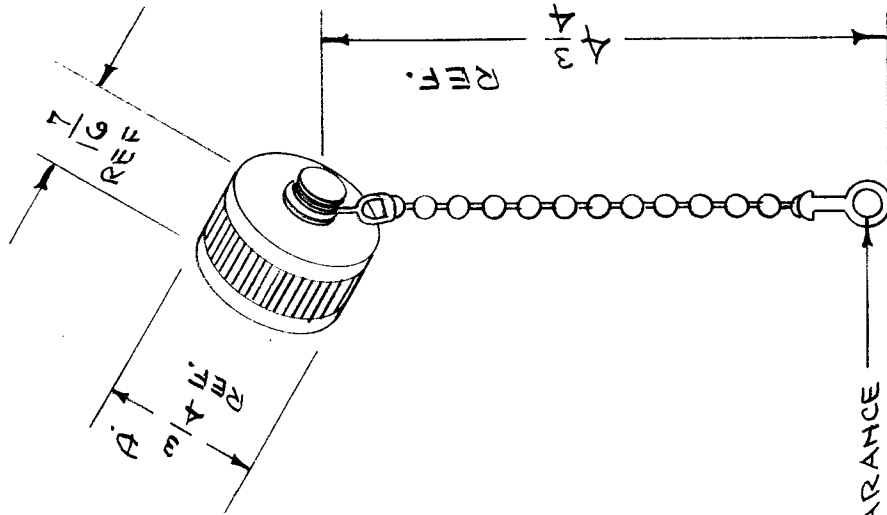
USED ON  
PROJECT NO.  
MODEL  
ASST. NO.  
DATE

REV	DATE	BY	CHKD	DESCRIPTION
B				REVISED TO SHOW 1/2" DIA. HOLE
A	1-27-51	J. G. WILSON		1/2" DIA. HOLE
ISSUED	DATE	CN. NO.	DRAFTING CHECKING APP.	
CHANGED FROM				SCALE 3/4" = 1" (75%)
TOLERANCES				
DEC. DIM. ±				DRILL, PUNCH, COMMERCIAL STOCK
FRAC. DIM. ± 1/64				SIZES AND MANUFACTURERS
ANGULAR DIM. ±				TOLERANCES ARE NOT INCLUDED.

REQ. ITEM	PART NO.	DESCRIPTION	SYMBOL
STEEL		THE TECHNICAL MATERIAL CORP. MAMARONECK, NEW YORK	
MATERIAL	WEIGHT PER PC.	PLUG-BUTTON VENTILATING	
TYPE & TEMPER		YAD-7-1-51 DRAWN	
HEAT TREAT. SPEC.		C. D. D. 7/1/51 ENGINEER	
FINISH & SPEC. NO.			HB-103 B

IF IT IS FOUND DESIRABLE TO CHANGE ANY TOLERANCE OR OTHER DETAIL SPECIFIED ON THIS DRAWING NOTIFY THE PURCHASER PROMPTLY.

MAXIMUM ALLOWABLE TOLERANCES HAVE BEEN DETERMINED AND DEVIATIONS WILL BE CAUSE FOR REJECTION. REMOVE ALL BURRS AND SHARP EDGES



6.32 CLEARANCE

HB-104

USED ON

REQ. PER UNIT	MODEL	PROJECT NO.	ASSY. NO.	DATE
1	CTAC	311	A-199	6-30-54

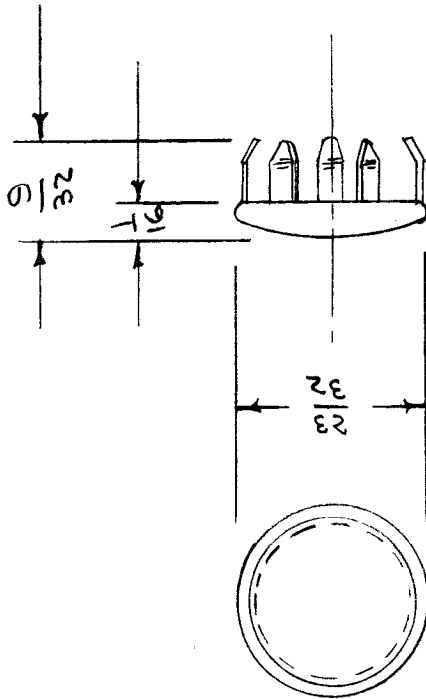
AMERICAN PHENOLIC CORP. NO. 83-1AC

REQ. ITEM	PART NO.	DESCRIPTION	SYMBOL
	#	THE TECHNICAL MATERIEL CORP.	
		MAMARONECK. NEW YORK	
		CAP AND CHAIN	
		UHF	
		C.D.D. 6-30-54	WDE
		DRAWN	ELEC. DES. APP.
		YLD	MECH. DES. APP.
		CHECKED	FINAL APPROVAL
			HB-104

ISSUE ITEM	CHANGED FROM	DATE	CN. NO.	DRAFTS CHECKER	ENG. APP.
TOLERANCES					
SCALE S-401-71-83-1AC					
DRILL, PUNCH, COMMERCIAL STOCK SIZES AND MANUFACTURERS TOLERANCES ARE NOT INCLUDED.					
ALL OTHERS	DEC. DIM. ±	FRAC. DIM. ±	ANGULAR DIM. ±		

IF IT IS FOUND DESIRABLE TO CHANGE ANY TOLERANCE OR OTHER DETAIL SPECIFIED ON THIS DRAWING NOTIFY THE PURCHASER PROMPTLY.

MAXIMUM ALLOWABLE TOLERANCES HAVE BEEN DETERMINED AND DEVIATIONS WILL BE CAUSE FOR REJECTION. REMOVE ALL BURRS AND SHARP EDGES



HOLE SIZE - 9/16  
 PANEL THICKNESS - .062 - .078  
 NO. PROXGS - 8

DIM. FOR REF. ONLY

REF: UNITED-CARR FAST. CORP. CAT. # 51156

HB-105

USED ON

REQ. PER UNIT	MODEL	PROJECT NO.	ASSY. NO.	DATE
1	GPR(S)(R)	257		4-11-55

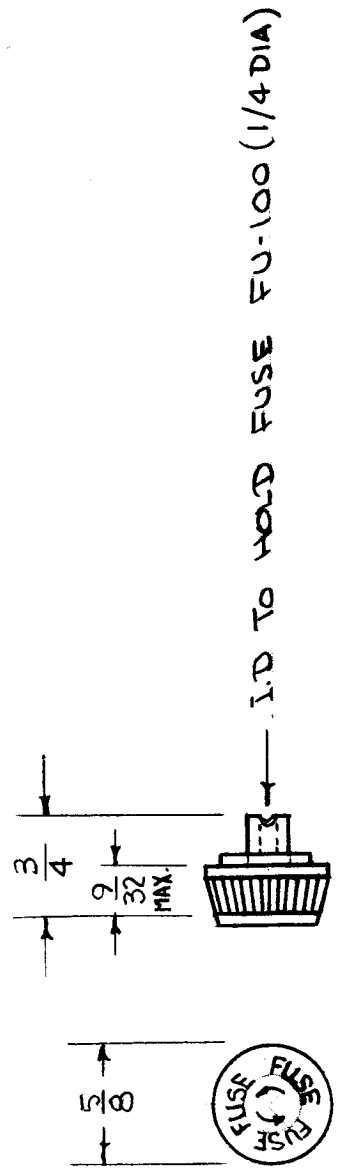
REQ. ITEM	PART NO.	DESCRIPTION	SYMBOL
		THE TECHNICAL MATERIEL CORP.	
		MAMARONECK. NEW YORK	
1050 STEEL		PLUG BUTTON	
MATERIAL	WEIGHT PER PC.	GPR (S) (R)	
		ORD. 4-11-55	
	TYPE & TEMPER	THH	
		DRAWN	ELEC. DES. APP.
		MECH. DES. APP.	
	HEAT TREAT. SPEC.	G.T.O	FINAL APPROVAL
	FINISH & SPEC. NO.		HB-105

ISSUE ITEM	CHANGED FROM	DATE	CN. NO.	DRAFTS	CHECKER	ENG. APP.
TOLERANCES						
SCALE						
DRILL, PUNCH, COMMERCIAL STOCK SIZES AND MANUFACTURERS TOLERANCES ARE NOT INCLUDED.						
ALL OTHERS	DEC. DIM. ±	FRAC. DIM. ±	ANGULAR DIM. ±			

TMC PART NO	CAP FOR TMC HOLDER #
HB-107-1	FH-100-1 & 2
HB-107-2	FH-100-3

REQ. PER UNIT	MODEL	USED ON ASSY. NO.	DATE

HB-107 A

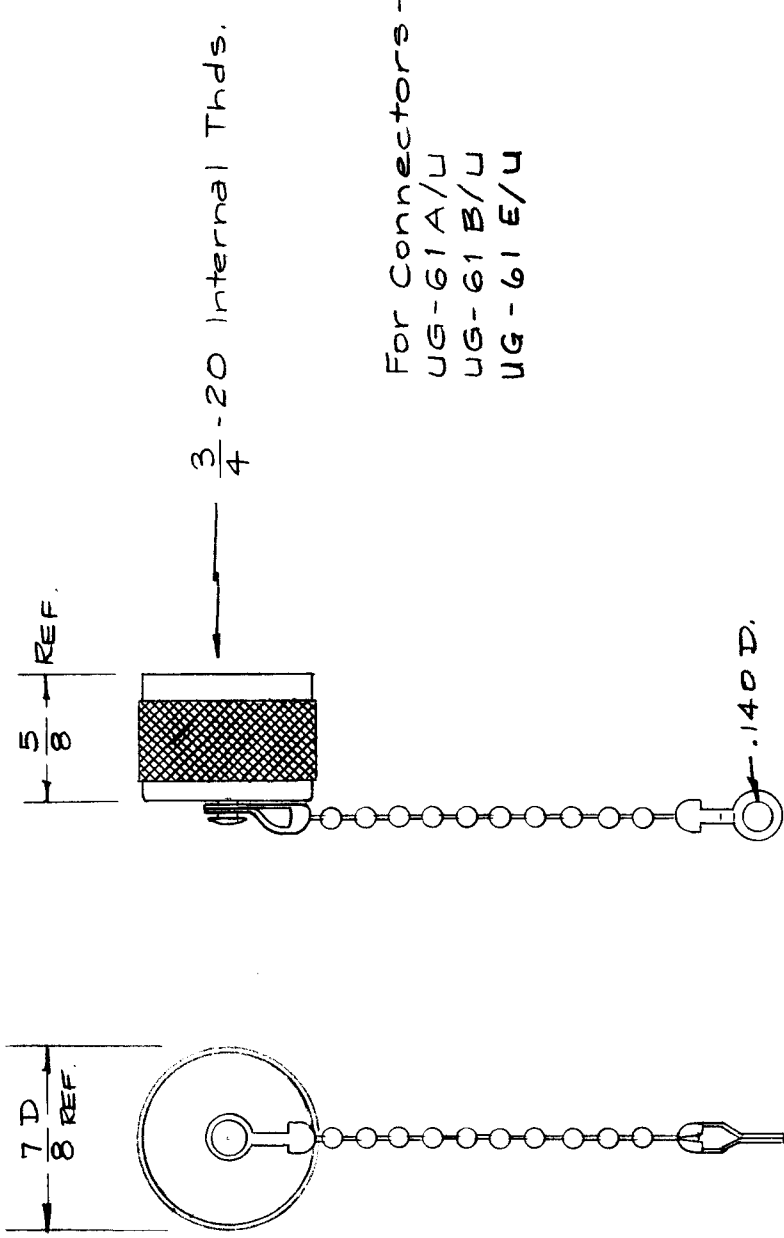


DIMENSIONS FOR REF. ONLY

REF BUSSMAN MFG. CO. HKP-H } FUSE HOLDER NUMBERS  
 HKP-M }

REQ. ITEM	PART NO.	DESCRIPTION	SYMBOL
		THE TECHNICAL MATERIEL CORP. MAMARONECK. NEW YORK	
		CAP, FUSE HOLDER	
			J.A.
			CDD.
			DRAWN
			CHECKED
			FINAL APPROVAL
			HB-107 A
			ELEC. DES. APP. MECH. DES. APP.
			FINISH & SPEC. NO.
			HEAT TREAT. SPEC.
			TYPE & TEMPER
			MATERIAL
			STOCK SIZE
			ENG. APP.
			CHECKER
			DRAFTS
			CH. NO.
			DATE
			2-9-63
			B210
			10
			3
			2
			1
			ISSUE ITEM
			CHANGED FROM
			CLARIFIED
			DIM. 9/32 MAX WAS 1/4
			CHART ADDED DIM 3/4 WAS 5/8
			SCALE:
			MAXIMUM ALLOWABLE TOLERANCES HAVE BEEN DETERMINED AND ANY DEVIATIONS WILL BE CAUSE FOR REJECTION. REMOVE ALL BURRS AND SHARP EDGES
			TOLERANCES
			DEC. DIM. ±
			FRAC. DIM. ±
			ANGULAR DIM. ±

REQ. PER UNIT	USED ON	HB-108
MODEL	ASSY. NO.	
	DATE	



For Connectors -  
 UG-61 A/U  
 UG-61 B/U  
 UG-61 E/U

AMPHENDL # 82-130

REQ. ITEM	PART NO.	DESCRIPTION	SYMBOL
		THE TECHNICAL MATERIEL CORP. MAMARONECK, NEW YORK	
		CAP & CHAIN	
		HN SERIES	
		HE	JM JER
		DRAWN	HECKED
		TYPE & TEMPER	FINAL APPROVAL
		HEAT TREAT. SPEC.	
		MATERIAL	
		FINISH & SPEC. NO.	HB-108
		ELEC. DES. APP. MECH. DES. APP.	

ISSUE ITEM CHANGED FROM

DATE CH. NO. DRAFTS CHECKER ENG. APP.

SCALE: S-401-70-3154  
 S-401-71-82-130

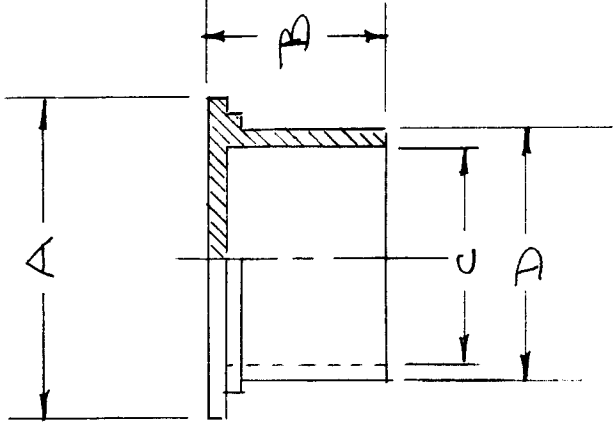
TOLERANCES

DEC. DIM. ±  
 FRAC. DIM. ±  
 ANGULAR DIM. ±

MAXIMUM ALLOWABLE TOLERANCES HAVE BEEN DETERMINED AND ANY DEVIATIONS WILL BE CAUSE FOR REJECTION. REMOVE ALL BURRS AND SHARP EDGES

HB-110

TMC NUMBER	MFG. NUMBER	FOR MS CONNECTOR SHELL SIZE		CONNECTOR THREAD SIZE	DIMENSIONS			
		COUPLING END OF	CONDUIT END OF		A + .010	B +1/64	C	D +1/64
HB-110-1	025-0459-000	85	85, 10S	1/2	.719	.425	.489	.539
HB-110-2	025-0460-000	10S, 10SL	10SL, 12, 12SL	5/8	.833	.685	.603	.653
HB-110-3	025-0462-000	12, 12S	14, 14S	3/4	.958	"	.728	.778
HB-110-4	025-0463-000	14, 14S	16, 16S	7/8	1.083	"	.853	.903
HB-110-5	025-0498-000	16, 16S	18	1	1.225	"	.985	1.045
HB-110-6	025-0501-000	28	32	1 3/4	1.970	"	1.730	1.790
HB-110-7	025-0502-000	32	36	2	2.230	"	1.980	2.040
HB-110-8	025-0503-000	36	40	2 1/4	2.480	"	2.230	2.290
HB-110-9	025-0504-000	40	44	2 1/2	2.732	"	2.480	2.540
HB-110-10	025-0505-000	48	48	3	3.242	"	2.980	3.040
HB-110-11	025-0507-000	18		1 1/8	1.350	"	1.110	1.170
HB-110-12	025-0468-000	20		1 1/4	1.485	"	1.235	1.295
HB-110-13	025-0469-000	22		1 3/8	1.610	"	1.360	1.420
HB-110-14	025-0510-000	24		1 1/2	1.725	"	1.485	1.545
HB-110-15	025-0511-000	44		2 3/4	2.992	"	2.730	2.790
HB-110-16	025-0499-000		20, 22	1 3/16	1.412	"	1.172	1.232
HB-110-17	025-0500-000		24, 28	1 7/16	1.662	"	1.422	1.482



CANNON ELECT. CO.

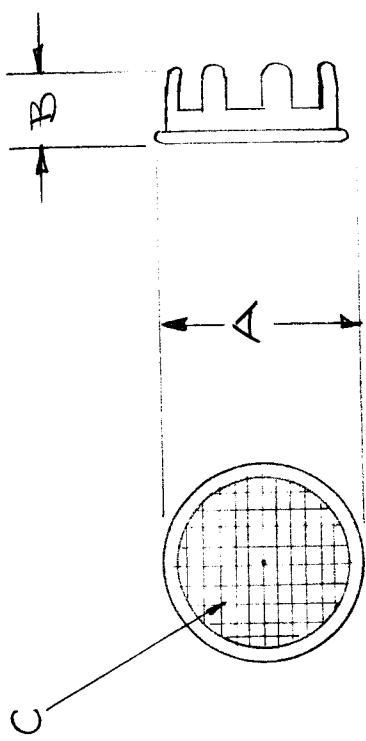
REQ. ITEM	PART NO.	DESCRIPTION	SYMBOL
		THE TECHNICAL MATERIEL CORP. MAMARONECK. NEW YORK	
		POLYETHYLENE	
		CAP, DUST, PLASTIC	
		MS CONNECTOR	
		MATERIAL	
		LG	
		DRAWN	
		CHECKED	
		TYPE & TEMPER	
		HEAT TREAT. SPEC.	
		FINISH & SPEC. NO.	
			HB-110
			ELEC. DES. APP. MECH. DES. APP.

SCALE:  
 MAXIMUM ALLOWABLE TOLERANCES HAVE BEEN DETERMINED AND ANY DEVIATIONS WILL BE CAUSE FOR REJECTION.  
 REMOVE ALL BURRS AND SHARP EDGES



TMC PART NO	A	B	C	Hole Mtg.	Material	REQ. PER UNIT	USED ON	ASSY. NO.	DATE
	HB-111 - 1		SCREEN	1-1/4	Steel			1	VR-A-2
HB-111 - 2			3/32 holes on 3/16 cent.	1-1/4	Brass				

HB-111 A

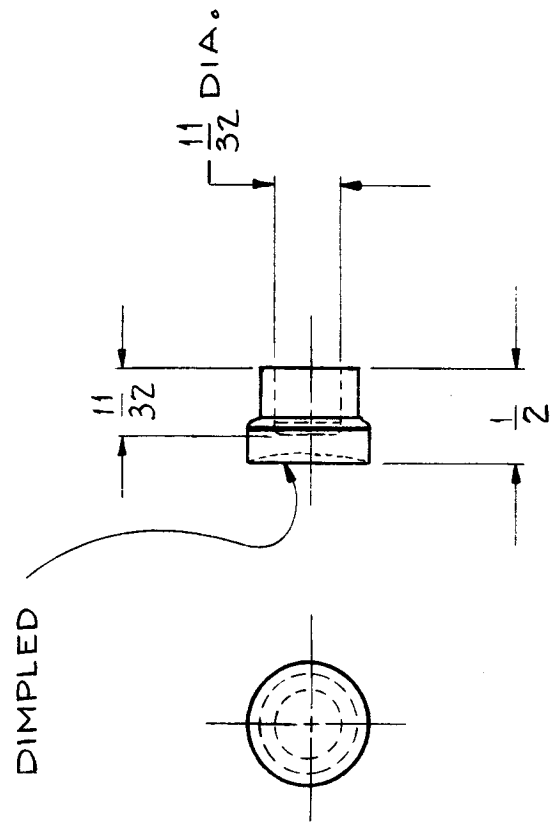


REQ. ITEM	PART NO.	DESCRIPTION	SYMBOL
A 1		THE TECHNICAL MATERIEL CORP. MAMARONECK. NEW YORK	
	STOCK SIZE	BUTTON, PLUG	
	MATERIAL		
ISSUE ITEM	CHANGED FROM	DATE	CH. NO.
A 1	C, Mat'l + - 2, added to chart	3-8-61	4352
	DRAFTS	DATE	CH. NO.
	38M		4352
	CHECKER	ENG. APP.	
	JCB		
TOLERANCES			
SCALE:			
MAXIMUM ALLOWABLE TOLERANCES HAVE BEEN DETERMINED AND ANY DEVIATIONS WILL BE CAUSE FOR REJECTION. REMOVE ALL BURRS AND SHARP EDGES			
DEC. DIM. ±			
FRAC. DIM. ±			
ANGULAR DIM. ±			
	TYPE & TEMPER	HEAT TREAT. SPEC.	CHECKED
			FINAL APPROVAL
	FINISH & SPEC. NO.	ELEC. DES. APP.	MECH. DES. APP.
			HB-111 A

REQ. PER UNIT	MODEL	USED ON ASS'Y. NO.	DATE
	GPT 10K		4-20-59

HB-11Z

TMC PART NO.	CAT. NO.	MATERIAL	COLOR
HB-11Z-1	3391-194	PHENOLIC	RED
-2	3391-194	PHENOLIC	BLACK

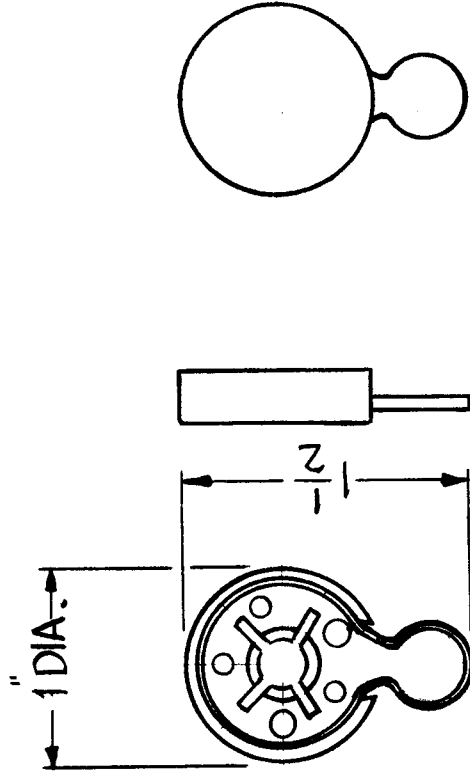


REQ. ITEM	CHANGED FROM	DATE	CH. NO.	DRAFTS	CHECKER	ENG. APP.	REVISION
TOLERANCES DEC. DIM. ± FRAC. DIM. ± ANGULAR DIM. ±							
SCALE: S-401-38 MAXIMUM ALLOWABLE TOLERANCES HAVE BEEN DETERMINED AND ANY DEVIATIONS WILL BE CAUSE FOR REJECTION. REMOVE ALL BURRS AND SHARP EDGES							
REQ. ITEM	PART NO.	DESCRIPTION		SYMBOL			
		THE TECHNICAL MATERIEL CORP.		MAMARONECK, NEW YORK			
		BUTTON KNOTS					
		SNAP-ON TYPE					
	J.C. BIELE	APPROVED	CHECKED	FINAL APPROVAL			
		DRAWN					
		TYPE & TEMPER		HEAT TREAT. SPEC.			
		FINISH & SPEC. NO.				HB-11Z	



REQ. PER UNIT	USED ON	MODEL	DATE
2	HB-114	CON	12-10-59

SPECIFICATIONS ~  
 660 WATTS  
 250 VOLTS AC  
 COLOR ~ BLACK



NOTE FOR USE WITH:  
 TMC PT. NOS BI-108 & TS-145

REQ. ITEM	PART NO.	DESCRIPTION	SYMBOL
		THE TECHNICAL MATERIEL CORP. MAMARONECK, NEW YORK	
		CAP, CONNECTOR (SHALLOW COLLAR)	
ISSUE ITEM	CHANGED FROM	DRAWN	CHECKED
		J.C. Biele	J.C. Biele
		DATE	TYPE & TEMPER
		CH. NO.	HEAT TREAT. SPEC.
		DRAFTS	FINISH & SPEC. NO.
		CHECKER	ELEC. DES. APP.
		ENG. APP.	MECH. DES. APP.
SCALE: 5401-83 (3890)			
TOLERANCES			
MAXIMUM ALLOWABLE TOLERANCES HAVE BEEN DETERMINED AND ANY DEVIATIONS WILL BE CAUSE FOR REJECTION. REMOVE ALL BURRS AND SHARP EDGES			
DEC. DIM. ±			
FRAC. DIM. ±			
ANGULAR DIM. ±			
		FINAL APPROVAL	HB-114







THE CONTENTS OF THIS DRAWING ARE THE EXCLUSIVE PROPERTY OF THE TECHNICAL MATERIEL CORP. ITS UNAUTHORIZED USE OR REPRODUCTION IN WHOLE OR IN PART IS STRICTLY FORBIDDEN.

REQ. PER UNIT

USED ON

MODEL

ASSY. NO.

DATE

HB-118

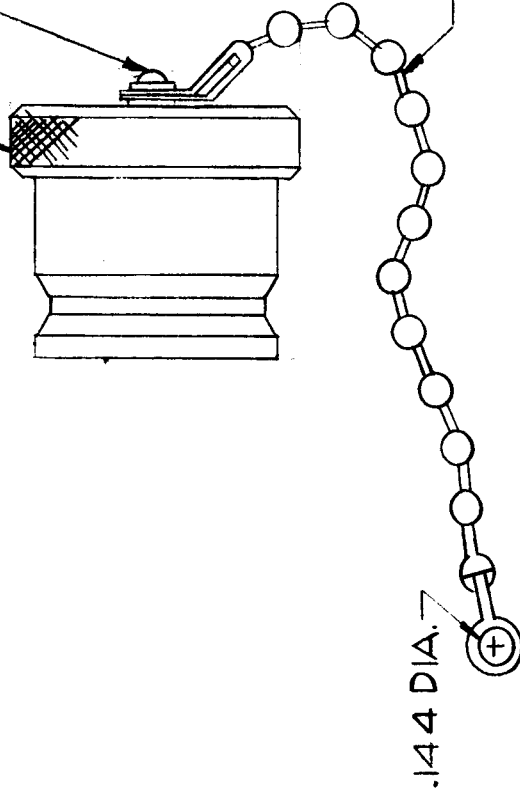
12-1-61

MATERIAL: BODY ~ BRASS  
 FINISH: SILVER PLATED WITH RHODIUM FLASH  
 MATES W/ ALL QDS PLUGS  
 CHAIN LENGTH - 5 INCHES

DIAMOND KNUREL

RIVET

BEAD CHAIN



.144 DIA.  $\oplus$

SYM DESCRIPTION

UNLESS OTHERWISE SPECIFIED:

DIMENSIONS ARE IN INCHES

TOLERANCES ON

FRAC.  $\pm 1/64$  DEC.  $\pm .005$  ANGLES  $\pm 1/2^\circ$

DATE CH. NO. DRAFTS CHECKER ENG. APP.

SCALE: S-401-70-3124

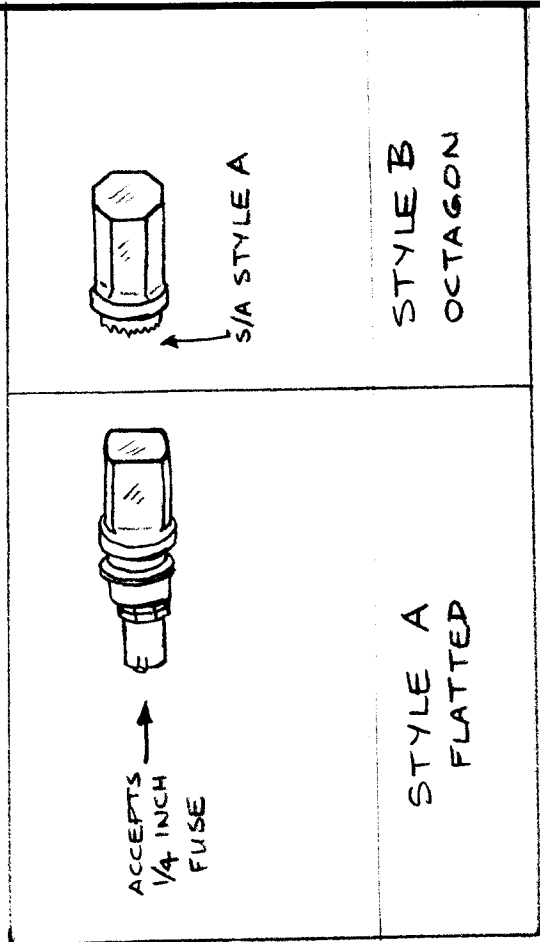
MAXIMUM ALLOWABLE TOLERANCES HAVE BEEN DETERMINED AND ANY DEVIATIONS WILL BE CAUSE FOR REJECTION. REMOVE ALL BURRS AND SHARP EDGES

REQ. ITEM	PART NO.	DESCRIPTION	SYMBOL
		THE TECHNICAL MATERIEL CORP. MAMARONECK, NEW YORK	
		COVER, ELECTRICAL CONNECTOR	
		QUICK DISCONNECT INSERT TYPE	
		D. H.	SAM
		CHECKED	FINAL APPROVAL
		DRAWN	
		ELEC. DES. APP.	HB-118
		MECH. DES. APP.	
		FINISH & SPEC. NO.	





TMC PART NO.	MFRS PART NO.		CAP COLOR	MATING FUSEHOLDER ASSEMBLY	STYLE	TYPE	REQ. PER UNIT	MODEL	USED ON	
	HB120-1								ASSY. NO.	DATE
HB120-2	6279 1/2	6279 1/2	CLEAR	FH104-1,2	B	NEON		STP	HB120	Ø
HB120-3	6323 1/2	6323 1/2	CLEAR	FH104-3	A	NEON				
HB120-4	6300 1/2	6300 1/2	AMBER	FH104-4,5	B	INCAND				
HB120-5	6312 1/2	6312 1/2	RED	FH104-6	B	INCAND				
HB120-6	6315 1/2	6315 1/2	AMBER	FH104-7	A	INCAND				
HB120-7	6391 1/2	6391 1/2	RED	FH104-8,9	A	INCAND				
	6292 1/2	6292 1/2	AMBER	FH104-10,15	A	INCAND				



ORIGINAL RELEASE FOR PRODUCTION

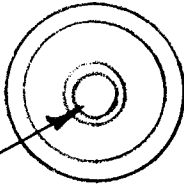
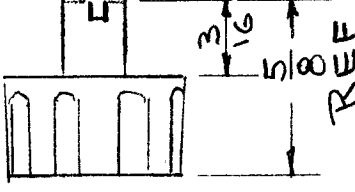
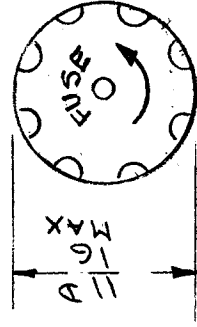
REQ. ITEM	PART NO.	DESCRIPTION	SYMBOL
		THE TECHNICAL MATERIEL CORP. MAMARONECK, NEW YORK	Ø
		CAP, ELECTRICAL-FUSE	
		MATERIAL	
		TYPE & TEMPER	
		HEAT TREAT. SPEC.	
		DRAWN	
		CHECKED	
		DATE	
		CH. NO.	
		DRAFTS	
		CHECKER	
		ENG. APP.	
		SCALE	
		DATE	
		CODE	
		UNLESS OTHERWISE SPECIFIED DIMENSIONS ARE IN INCHES AND INCLUDE CHEMICALLY APPLIED OR PLATED FINISHES	
		FRACTIONS ± 1/84 ANGLES ± 0° 30'	
		DECIMALS .X ± .05 .XX ± .01 .XXX ± .005	
		TOLERANCES	
		CODE	
		SA01-222	
		FINISH & SPEC. NO.	
		ELEC. DES. APP. MECH. DES. APP.	
		16/15/65	
		AD	
		4/15/65	
		FINAL APPROVAL	
		HB120	Ø

# STANDARD DRAWING

TMC NO.	MFRS NO.	MATES WITH TMC HOLDER #	USED ON	HB-121	Ø
HR-121-1	342004-SA-2	FH-103	REQ. PER UNIT	MODEL	ABS'Y. NO.
					DATE

TEST PROD ACCOMODATION- KNOCK-OUT IN CENTER  
 EXTRACTING METHOD- BAYONET, SPRING, GRIP IN CAP  
 MATERIAL- TYPE CFG PLASTIC, MIL-P-14E

ACCOMODATES  
1/4 DIA. FUSE



REQ. ITEM	PART NO.	DESCRIPTION	SYMBOL
		THE TECHNICAL MATERIEL CORP. MAMARONECK. NEW YORK	
		CAP. ELECTRICAL, FUSEHOLDER (Nonindicating)	
		JAD	
		DRAWN	
		CHECKED	
		HEAT TREAT. SPEC.	
		MATERIAL	
		TYPE & TEMPER	
		FINISH & SPEC. NO.	
		ELEC. DES. APP.	
		MECH. DES. APP.	
		FINAL APPROVAL	
		HB 121	Ø

DATE 2-12-66  
 CH. NO. 44  
 DRAFTS Jc  
 CHECKER  
 ENG. APP.  
 SCALE  
 CODE S401-149  
 ORIGINAL RELEASE FOR PRODUCTION  
 UNLESS OTHERWISE SPECIFIED DIMENSIONS ARE IN INCHES AND INCLUDE CHEMICALLY APPLIED OR PLATED FINISHES  
 DECIMALS  
 .X ± .05  
 .XX ± .01  
 .XXX ± .005  
 FRACTIONS  
 ± 1/64  
 ANGLES  
 ± 0° 30'







# STANDARD DRAWING

<b>TMC PART NO.</b>	<b>DIMENSION</b>	<b>MFG. PART NO.</b>	<b>USED ON</b>	<b>DATE</b>	<b>SYMBOL</b>
HB 125 -1	A B	5401 - 6	ASBY. NO.	4-11-66	HB 125 Ø
HB 125 -2	3/8 19/32	1704 - 9			
HB 125 -3	1/2 7/8				
HB 125 -4	1/2 19/32	1704 - 13			
HB 125 -5	17/32 5/8	1704 - 14			
HB 125 -6	5/8 5/8	1704 - 17			
HB 125 -7	3/4 5/8	1704 - 21			
HB 125 -8	3/4 1 3/8				
HB 125 -9	1 1/4 7/8	1704 - 336			
HB 125 -9	13/32 19/32	.406 - 19/32 I.L.			

SHAPE OF TOP OPTIONAL

<b>REQ. ITEM</b>	<b>PART NO.</b>	<b>DESCRIPTION</b>	<b>SYMBOL</b>
		THE TECHNICAL MATERIEL CORP. MAMARONECK. NEW YORK	
		VINYL - FLEXIBLE	
		CAP, DUST, CONNECTOR	
		MATERIAL	
		TYPE & TEMPER	
		HEAT TREAT. SPEC.	
		COLOR - YELLOW	
		FINISH & SPEC. NO.	
		4-11-66	
		G.D.L.	
		DRAWN	
		CHECKED	
		FINAL APPROVAL	
		HB 125	Ø

APPLICATION			REVISIONS						
QTY	MODEL USED ON	ASS'Y NO.	LTR	DESCRIPTION	DATE	E.M.N.NO	DRAFT	CHKD	APPD
1	LPA-2		X	EXPERIMENTAL RELEASE	4/17/68		C.V.	<i>[Signature]</i>	
			Ø	ORIG. RELEASE FOR PROD.	4.24.68	Ø	R.G.		<i>[Signature]</i>

TMC P/N	CATALOG NO.	CABLE OUTLET	LENGTH
HB126-1	3-13	END RUBBER GROMMET 7/16ID	1-1/16

**PURCHASING NOTE:** VENDOR MUST INCLUDE THE FOLLOWING INFORMATION WHEN SHIPPING THIS ITEM TO TMC.

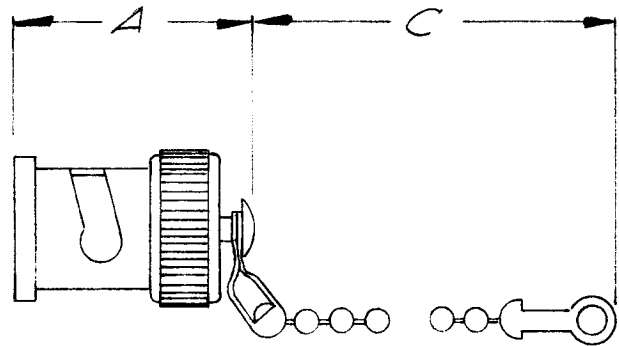
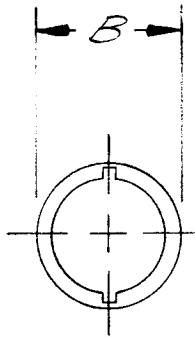
1. AN OUTLINE DRAWING OR ILLUSTRATION FROM CATALOG SHOWING ALL PERTINENT DIMENSIONS AND TOLERANCES.
2. ELECTRICAL AND/OR MECHANICAL SPECIFICATIONS AS SHOWN IN THEIR CATALOGS

UNLESS OTHERWISE SPECIFIED DIMENSIONS ARE IN INCHES AND INCLUDE CHEMICALLY APPLIED OR PLATED FINISHES		REQ'D	ITEM	PART NUMBER	DESCRIPTION	SYM.
DECIMALS .X ± .05 .XX ± .01 .XXX ± .005		FIBUDETTI		LIST OF MATERIAL		
FRACTIONS 1/64 ANGLES 0°-30'		FINAL APPROVAL <i>[Signature]</i>		THE TECHNICAL MATERIEL CORP. MAMARONECK, NEW YORK		
MATERIAL DRAWN STEEL	MECH. DES.	DATE	CAP, PLUG			
FINISH BLACK JAPAN	ELECT. DES.	DATE				
S401-71	CHECKED <i>[Signature]</i>	DATE 4/17/68				
DRAWN C.V.		DATE 4-17-68				
NOTICE TO PERSONS RECEIVING THIS DRAWING THE TECHNICAL MATERIEL CORPORATION claims proprietary right in the material disclosed hereon. This drawing is issued in confidence for engineering information only and may not be reproduced or used to manufacture anything shown hereon without permission from THE TECHNICAL MATERIEL CORPORATION to the user. This drawing is loaned for mutual assistance and is subject to recall at any time.			SIZE A	CODE IDENT. NO. 82679	DWG NO. HB 126	ISSUE Ø
			SCALE	SHEET		OF



APPLICATION			REVISIONS						
QTY	MODEL USED ON	ASS'Y NO.	LTR	DESCRIPTION	DATE	E.M.N.NO	DRAFT	CHKD	APPD
	DDR-10 ( )		Ø	ORIGINAL RELEASE	7/17/70		Ø		
	DDRR-10 ( )								

TMC P/N	MFR P/N	MIL. NO.	LENGTH A DIM	O.D. B DIM.	CHAIN LENGTH C DIM.
HB 128-1	31-026-1050	CW 123A/U	45/64	9/16	2 1/4

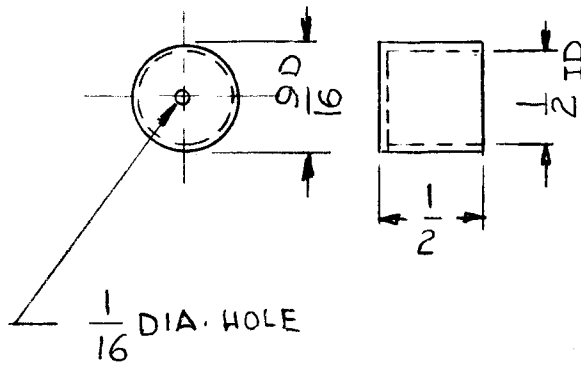


FINISH:  
NON TARNISH  
ASTROPLATE FINISH

UNLESS OTHERWISE SPECIFIED DIMENSIONS ARE IN INCHES AND INCLUDE CHEMICALLY APPLIED OR PLATED FINISHES		REQ'D	ITEM	PART NUMBER	DESCRIPTION	SYM.
DECIMALS .X ± .05 .XX ± .01 .XXX ± .005	FRACTIONS TOLS. 1/64 ANGLES 0°-30'	LIST OF MATERIAL				
MATERIAL		FINAL APPROVAL	DATE	<b>THE TECHNICAL MATERIEL CORP.</b> MAMARONECK, NEW YORK  CAP, DLIST, RF MALE		
FINISH		MECH. DES.	DATE			
5401-71		ELECT. DES.	DATE			
		CHECKED	DATE			
		DRAWN	DATE			

<b>NOTICE TO PERSONS RECEIVING THIS DRAWING</b> THE TECHNICAL MATERIEL CORPORATION claims proprietary right in the material disclosed hereon. This drawing is issued in confidence for engineering information only and may not be reproduced or used to manufacture anything shown hereon without permission from THE TECHNICAL MATERIEL CORPORATION to the user. This drawing is loaned for mutual assistance and is subject to recall at any time.				SIZE A	CODE IDENT. NO. 82679	DWG NO. HB 128	ISSUE Ø
SCALE NTS			SHEET		OF		

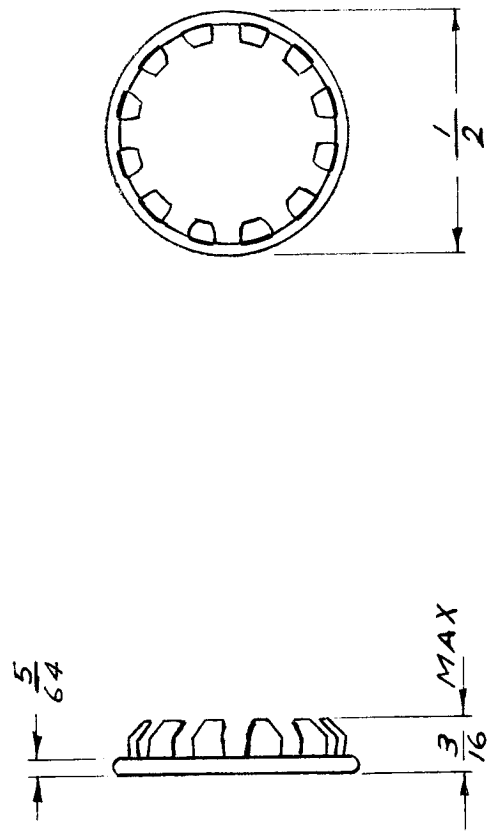
APPLICATION			REVISIONS						
QTY	MODEL USED ON	ASS'Y NO.	LTR	DESCRIPTION	DATE	E.M.N.NO	DRAFT	CHKD	APPD
2	CPP-2	RX107	A	DRAWN A PART OF HB TMC No. ASSES-3	2-7-89		G.D.L.		



UNLESS OTHERWISE SPECIFIED DIMENSIONS ARE IN INCHES AND INCLUDE CHEMICALLY APPLIED OR PLATED FINISHES		REQ'D	ITEM	PART NUMBER	DESCRIPTION	SYM.
DECIMALS: .X ± .05, .XX ± .01, .XXX ± .005 FRACTIONS: 1/64, ANGLES: 0°-30°		LIST OF MATERIAL				
MATERIAL .031 THK BRASS		FINAL APPROVAL	DATE	<b>THE TECHNICAL MATERIEL CORP.</b> MAMARONECK, NEW YORK  CAP, COVER RECTIFIER		
FINISH S135		MECH. DES.	DATE			
NICKEL PLATE		ELECT. DES.	DATE			
		CHECKED	DATE			
		DRAWN	DATE			
<b>NOTICE TO PERSONS RECEIVING THIS DRAWING</b> THE TECHNICAL MATERIEL CORPORATION claims proprietary right in the material disclosed hereon. This drawing is issued in confidence for engineering information only and may not be reproduced or used to manufacture anything shown hereon without permission from THE TECHNICAL MATERIEL CORPORATION to the user. This drawing is loaned for mutual assistance and is subject to recall at any time.		SIZE	CODE IDENT. NO.	DWG NO.	ISSUE	
		A	82679	HB 129	A	
		SCALE	1:1	SHEET		OF

HB 10001

ISSUE	ITEM	CHANGED FROM	DATE	CN. NO.	DRAFTS	CHECKER	ENG. APP.	REQ.	ITEM	PART NO.	DESCRIPTION	SYMBOL
Ø		REL TO PROD	1-6-66		RD							
A		MFR REF ADDED	15-6-66		RD							



DIMENSIONS FOR REFERENCE ONLY

MFR: S401-176, PART NO: 41B

REF: LD 10226

DL 10008	050/66	A10485	1 JUNE 66
MODEL	PROJECT NO.	ASS'Y. NO.	DATE
USED ON			
<p>MAXIMUM ALLOWABLE TOLERANCES HAVE BEEN DETERMINED AND DEVIATIONS WILL BE CAUSE FOR REJECTION. REMOVE ALL BURRS AND SHARP EDGES</p>		<p>IF IT IS FOUND DESIRABLE TO CHANGE ANY TOLERANCE OR OTHER DETAIL SPECIFIED ON THIS DRAWING NOTIFY THE PURCHASER PROMPTLY.</p>	
TOLERANCES			
DEC. DIM. ±		SCALE NTS	
FRAC. DIM. ± 1/64		DIMENSIONS IN INCHES	
ANGULAR DIM. ±		UNLESS OTHERWISE SPECIFIED	
		DRILL, PUNCH, COMMERCIAL STOCK SIZES AND MANUFACTURERS TOLERANCES ARE NOT INCLUDED.	
		HEAT TREAT. SPEC.	
		NICKEL PLATED	
		FINISH & SPEC. NO.	
		AUBREY	
		HB10001	
		A	
		MATERIAL	
		BRASS	
		WEIGHT PER PC.	
		STOCK SIZE	
		TYPICAL	
		TYPE & TEMPER	
		FOR 3/8 DIA. HOLE	
		RD	
		DRAWN	
		ELEC. DES. APP.	
		MECH. DES. APP.	
		CHECKED	
		FINISH APPROVAL	
		TMC (Canada) LIMITED	
		OTTAWA ONTARIO	
		BUTTON, PLUG	