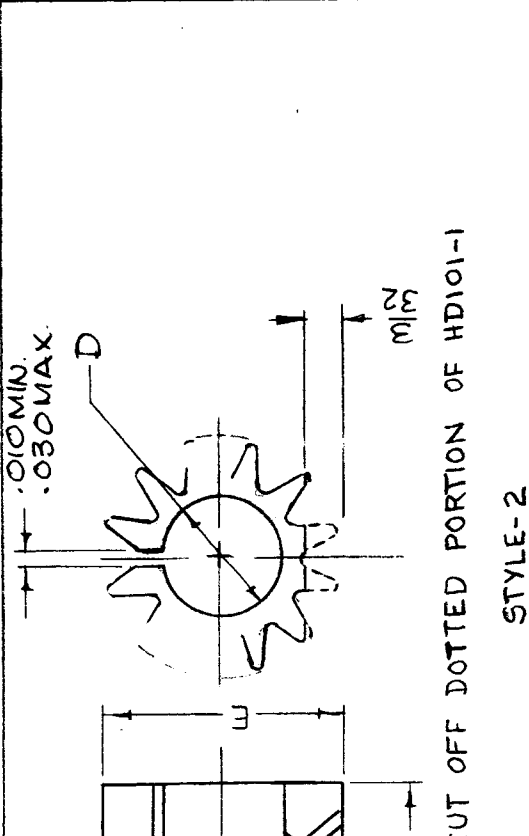
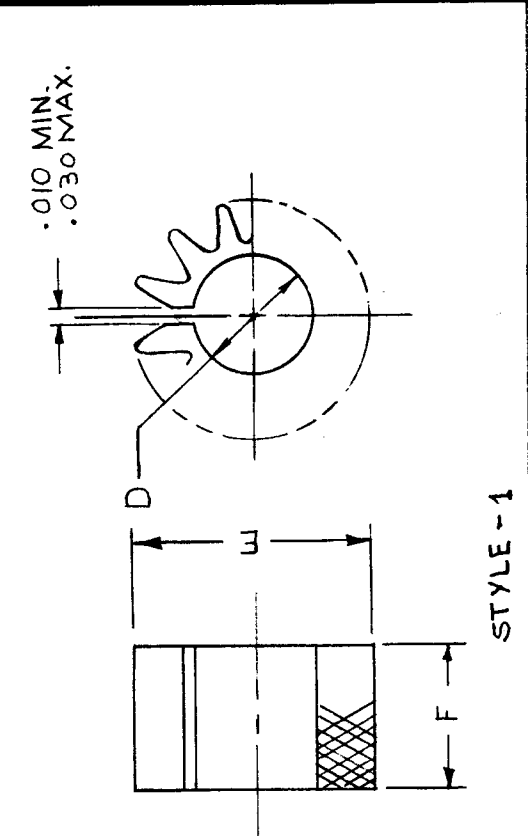
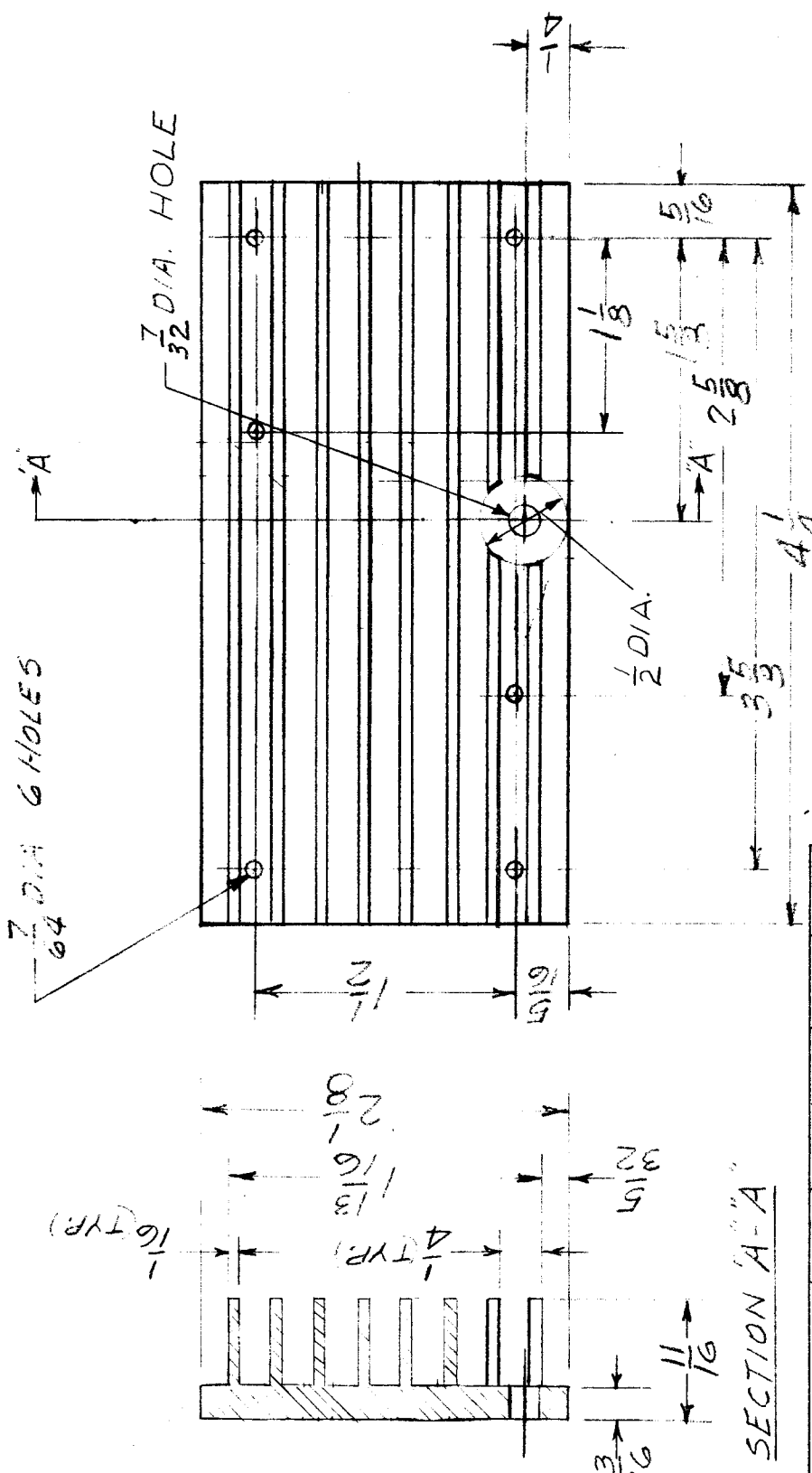


TMC PART NO.	MFR. PART NO.	D	E	F	FINISH	STYLE	REQ. PER UNIT	USED ON	MODEL	DATE	ASBY. NO.	HD101	A
HD101-1	3AL675-5GR	±.005	5/8	.375	GR. ANODIZE	1	2	TTR-10	A 3190	6-26-64			
HD101-2	3AL675-5GR (MOD)	.322	5/8	.375	GR. ANODIZE	2							

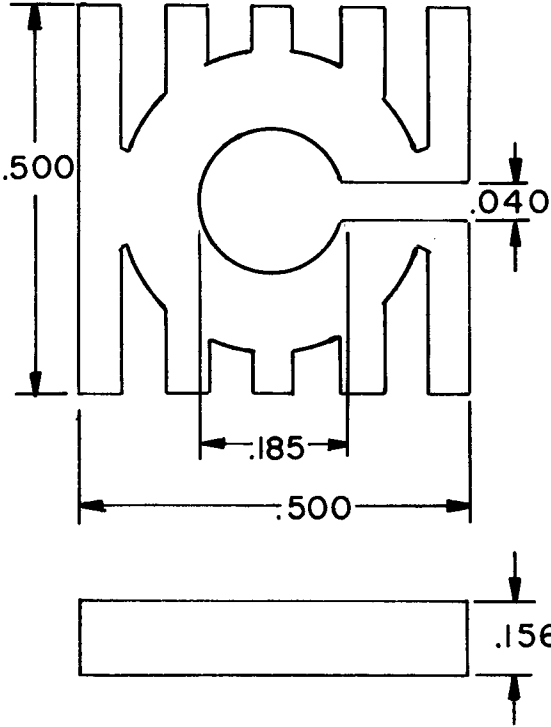


REQ. ITEM	PART NO.	DESCRIPTION	SYMBOL
		AALTONEN	
		THE TECHNICAL MATERIEL CORP. MAMARONECK, NEW YORK	
		ALUMINUM ALLOY PER QQ-A-268	
		HEATSINK	
		RADIATOR TYPE	
		AMARINO	
		2024-T4	
		TYPE & TEMPER	
		HEAT TREAT. SPEC.	
		PER MIL-A-8625	
		FINISH & SPEC. NO.	
		S401-254	
		DATE	
		3-15-65	
		7-7-64	
		6-26-64	
		CH. NO.	
		13714	
		Ø	
		X	
		DRAFTS	
		A.M.	
		CHECKER	
		ENG. APP.	
		SCALE	
		UNLESS OTHERWISE SPECIFIED DIMENSIONS ARE IN INCHES AND INCLUDE CHEMICALLY APPLIED OR PLATED FINISHES	
		TOLERANCES	
		FRACTIONS ± 1/64 ANGLES ± 0° 30'	
		DECIMALS .X ± .05 .XX ± .01 .XXX ± .005	
		CODE	
		C	
		STOCK SIZE	
		ALUMINUM ALLOY PER QQ-A-268	
		MATERIAL	
		2024-T4	
		TYPE & TEMPER	
		HEAT TREAT. SPEC.	
		PER MIL-A-8625	
		FINISH & SPEC. NO.	
		S401-254	
		DRAWN	
		CHECKED	
		FINAL APPROVAL	
		HD101	
		A	

REQ. PER UNIT	1	MODEL	VOX-7	USED ON	HD107	A
	1		MMX-1	ASSY. NO.	A4502	
				DATE		



APPLICATION			REVISIONS						
QTY	MODEL USED ON	ASS'Y NO.	LTR	DESCRIPTION	DATE	E.M.N.NO	DRAFT	CHKD	APPD
1	MMX-()-2	A4506	X	EXPERIMENTAL RELEASE	9/15/67				
			Ø	ORIG. RELEASE FOR PROD.	9-20-67	Ø		C.V. R.G.	
			A	ADD. PICT., DELE. PURCHASING NOTE	4-16-71	20324	R.F.		P.F.B.



MFGR PART NO: 20-5/32 A185
 MFGR (TMC CODE #): S401-408

SPECIFICATIONS

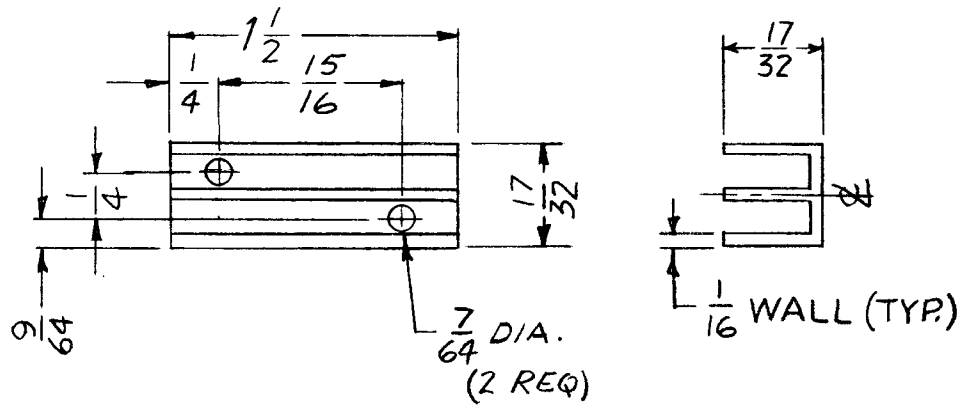
MATERIAL: ALUMINUM ALLOY 6063-T6

FINISH: S120 BLACK ANODIZE

UNLESS OTHERWISE SPECIFIED DIMENSIONS ARE IN INCHES AND INCLUDE CHEMICALLY APPLIED OR PLATED FINISHES	REQ'D	ITEM	PART NUMBER	DESCRIPTION	SYM.
	O. POSE			LIST OF MATERIAL	
DECIMALS .X ± .05 .XX ± .01 .XXX ± .005	FRACTIONS 1/64 ANGLES 0° - 30'	TOLS.	FINAL APPROVAL <i>[Signature]</i>	DATE 9/21/67	THE TECHNICAL MATERIEL CORP. MAMARONECK, NEW YORK
MATERIAL	MECH. DES.		DATE	HEAT, SINK	
FINISH	ELECT. DES.		DATE		
	CHECKED		DATE		
	DRAWN	CV	DATE		
NOTICE TO PERSONS RECEIVING THIS DRAWING THE TECHNICAL MATERIEL CORPORATION claims proprietary right in the material disclosed hereon. This drawing is issued in confidence for engineering information only and may not be reproduced or used to manufacture anything shown hereon without permission from THE TECHNICAL MATERIEL CORPORATION to the user. This drawing is loaned for mutual assistance and is subject to recall at any time.				SIZE A	CODE IDENT. NO. 82679
				DWG NO. HD 109	ISSUE A
				SCALE 1:1	SHEET 1 OF 1

M. Allen 9/19/67

APPLICATION			REVISIONS						
QTY	MODEL USED ON	ASS'Y NO.	LTR	DESCRIPTION	DATE	E.M.N.NO	DRAFT	CHKD	APPD
6	SME()-6	A4647	X	EXP. RELEASE	3/12/68	+	H.S.	MM	SP
			Ø	ORIG RELEASE FOR PROD	3/25/68	Ø	C.V.	MM	FO



UNLESS OTHERWISE SPECIFIED DIMENSIONS ARE IN INCHES AND INCLUDE CHEMICALLY APPLIED OR PLATED FINISHES	REQ'D	ITEM	PART NUMBER	DESCRIPTION	SYM.
DECIMALS: .X ± .05, .XX ± .01, .XXX ± .005 FRACTIONS: 1/64 TOLS.: ANGLES 0°-30°					
		O. POSE		LIST OF MATERIAL	
		MATERIAL EXTRUDED ALUMINUM		THE TECHNICAL MATERIEL CORP. MAMARONECK, NEW YORK	
		FINISH S120 BLACK ANODIZE		HEAT SINK	
		S 401-451			

NOTICE TO PERSONS RECEIVING THIS DRAWING THE TECHNICAL MATERIEL CORPORATION claims proprietary right in the material disclosed hereon. This drawing is issued in confidence for engineering information only and may not be reproduced or used to manufacture anything shown hereon without permission from THE TECHNICAL MATERIEL CORPORATION to the user. This drawing is loaned for mutual assistance and is subject to recall at any time.	SIZE A	CODE IDENT. NO. 82679	DWG NO. HD 111	ISSUE Ø
	SCALE 1:1	SHEET OF		

APPLICATION			REVISIONS							
QTY	MODEL USED ON	ASS'Y NO.	LTR	DESCRIPTION	DATE	E.M.N.NO	DRAFT	CHKD	APPD	
	RTIH-3	A4601	X	EXPERIMENTAL RELEASE	8/12/68			C.V.	<i>[Signature]</i>	
	RTTD-4	A4601	Ø	ORIG. RELEASE FOR PROD.	11/4/68	Ø		R.G.	<i>[Signature]</i>	
	MSAR-4	A4627								

TMC P/N	MFGR CAT NO.	WIDTH	LENGTH	D DIA	SINK MTG HOLE	PICTORIAL FIG #
HD113-1	221 A 318	3/4" SQ	1/4"	.318	NONE	1
-2	241 A 468	1" SQ	1/4"	.468	NONE	1
-3	212 A 322	5/8" SQ	5/16"	.322	NONE	1

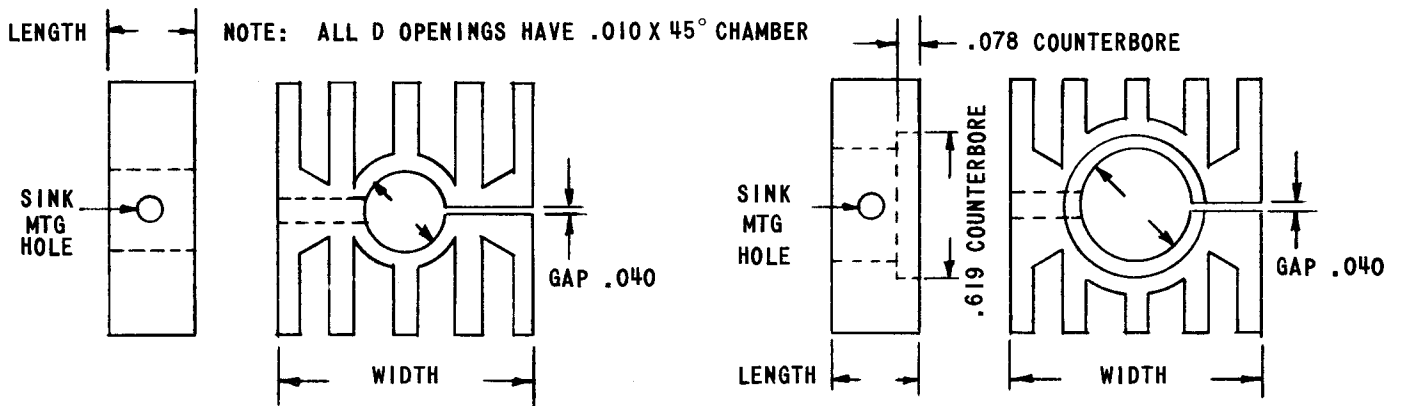
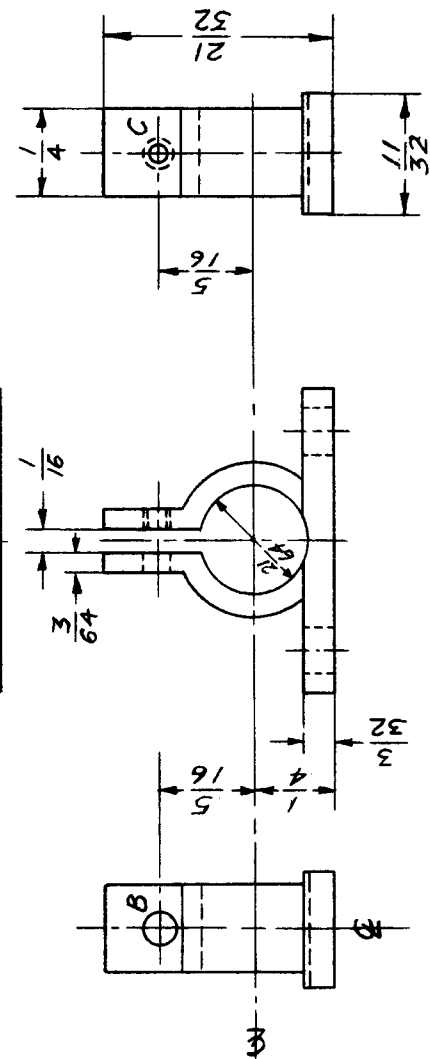
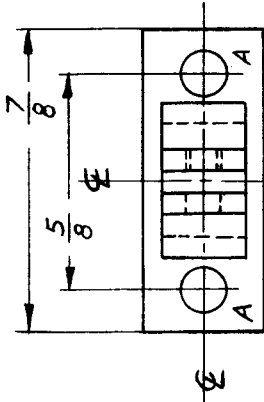


FIG 1

FIG 2

UNLESS OTHERWISE SPECIFIED DIMENSIONS ARE IN INCHES AND INCLUDE CHEMICALLY APPLIED OR PLATED FINISHES		REQ'D ITEM	PART NUMBER	DESCRIPTION	SYM.
DECIMALS: .X ± .05, .XX ± .01, .XXX ± .005 FRACTIONS: 1/64, ANGLES: 0° - 30'		LIST OF MATERIAL			
MATERIAL		FINAL APPROVAL	DATE	THE TECHNICAL MATERIEL CORP. MAMARONECK, NEW YORK HEATSINK, SEMI-CONDUCTOR	
FINISH		MECH. DES.	DATE		
S401-408		ELECT. DES.	DATE		
		CHECKED	DATE		
		DRAWN	DATE	SIZE	CODE IDENT. NO.
NOTICE TO PERSONS RECEIVING THIS DRAWING THE TECHNICAL MATERIEL CORPORATION claims proprietary right in the material disclosed hereon. This drawing is issued in confidence for engineering information only and may not be reproduced or used to manufacture anything shown hereon without permission from THE TECHNICAL MATERIEL CORPORATION to the user. This drawing is loaned for mutual assistance and is subject to recall at any time.				A	82679
				DWG NO.	HD 113
				ISSUE	Ø
				SCALE	SHEET OF

ISSUE	ITEM	CHANGED FROM	DATE	CN. NO.	DRAFTS	CHECKER	ENG. APP.	REQ.	ITEM	PART NO.	DESCRIPTION	SYMBOL
Ø		REL. TO PROD.	OCT 19/65		GM		(Signature)					



MATERIAL: COPPER
 FINISH: GOLD IRIDITE MIL-C-5541
 (1) 2-56 x 1/4 LG. BRASS
 SCREW SUPPLIED BY MFR.
 INSULATION: NONE
 THERMAL RESISTANCE
 21.8 DEGREES C/WATT AT 1 WATT
 20.1 DEGREES C/WATT AT 2 1/2 WATTS
 ACCOMMODATES T05 OR SIMILAR
 TRANSISTOR CASE

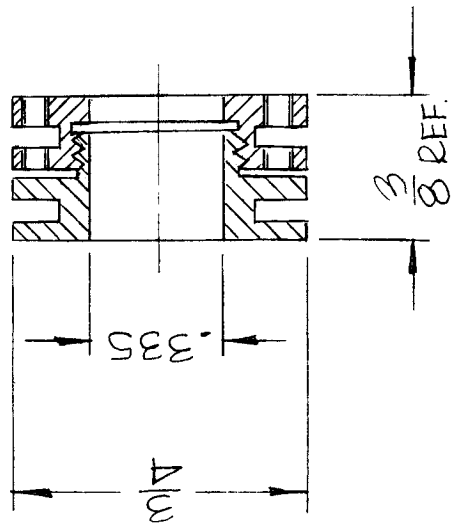
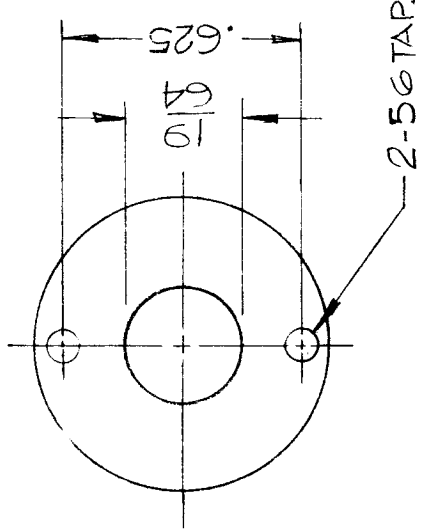
HOLE LEGEND	REQ'D.
A HOLE 9/64 DIA	2 REQ.
B HOLE 3/32 DIA	1 REQ.
C HOLE DRILL & TAP 2-56 THD	1 REQ.

S-401-105 MFG'R PART NO. (9022-162U)

AMC 20	020/65	A 10383/10385	19-10-65
MODEL	PROJECT NO.	ASS'Y. NO.	DATE
USED ON			
MAXIMUM ALLOWABLE TOLERANCES HAVE BEEN DETERMINED AND DEVIATIONS WILL BE CAUSE FOR REJECTION. REMOVE ALL BURRS AND SHARP EDGES		IF IT IS FOUND DESIRABLE TO CHANGE ANY TOLERANCE OR OTHER DETAIL SPECIFIED ON THIS DRAWING NOTIFY THE PURCHASER PROMPTLY.	
TOLERANCES SCALE N.T.S. DIMENSIONS IN INCHES UNLESS OTHERWISE SPECIFIED DRILL, PUNCH, COMMERCIAL STOCK SIZES AND MANUFACTURERS TOLERANCES ARE NOT INCLUDED.			
ALL OTHERS	DEC. DIM. ±	FRAC. DIM. ± 1/64	ANGULAR DIM. ±
STOCK SIZE MATERIAL TYPE & TEMPER HEAT TREAT. SPEC. FINISH & SPEC. NO.		WEIGHT PER PC. STOCK SIZE MATERIAL TYPE & TEMPER HEAT TREAT. SPEC. FINISH & SPEC. NO.	
TMC (Canada) LIMITED OTTAWA ONTARIO		HEAT SINK, CONDUCTION	
App. (Signature) DRAWN (Signature) CHECKED (Signature)		ELEC. DES. APP. (Signature) MECH. DES. APP. (Signature)	
BEDFORD		HD 10001	

HD 10004

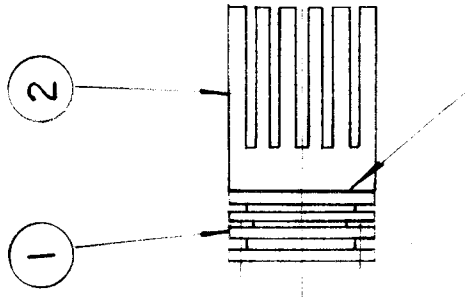
STANDARD DRAWING



MFGR, PART No 2215
 MFGR * S401-266

ISSUE	ITEM	CHANGED FROM	DATE	CN. NO.	DRAFTS	CHECKER	ENG. APP.	REQ.	ITEM	PART NO.	DESCRIPTION	SYMBOL
φ		REL. TO PROD.	10/4/68		S.B.	J.W.	J.					
<p>USED ON</p>												
<p>MAXIMUM ALLOWABLE TOLERANCES HAVE BEEN DETERMINED AND DEVIATIONS WILL BE CAUSE FOR REJECTION REMOVE ALL BURRS AND SHARP EDGES</p>			<p>IF IT IS FOUND DESIRABLE TO CHANGE ANY TOLERANCE OR OTHER DETAIL SPECIFIED ON THIS DRAWING NOTIFY THE PURCHASER PROMPTLY.</p>			<p>SCALE</p>			<p>DEC. DIM. ± FRAC. DIM. ± ANGULAR DIM. ±</p>			
<p>TOLERANCES</p>			<p>DIMENSIONS IN INCHES UNLESS OTHERWISE SPECIFIED</p>			<p>DRILL, PUNCH, COMMERCIAL STOCK SIZES AND MANUFACTURERS TOLERANCES ARE NOT INCLUDED.</p>			<p>STOCK SIZE</p>			
<p>ALL OTHERS</p>			<p>PROJECT NO.</p>			<p>ASS'Y. NO.</p>			<p>DATE</p>			
<p>MODEL</p>			<p>10/4/68</p>			<p>10/4/68</p>			<p>HEAT SINK</p>			
<p>MATERIAL</p>			<p>WEIGHT PER FC.</p>			<p>TYPE & TEMPER</p>			<p>HEAT TREAT. SPEC.</p>			
<p>DRAWN</p>			<p>CHECKED</p>			<p>ELEC/ST APP.</p>			<p>MECH DES. APP.</p>			
<p>FINAL APPROVAL</p>			<p>GOLD CHROMATE</p>			<p>FINISH & SPEC. NO.</p>			<p>TMC (Canada) LIMITED OTTAWA ONTARIO</p>			
<p>HD10004 φ</p>			<p>3/8 REF.</p>			<p>3/32</p>			<p>1/4</p>			

ISSUE	ITEM	CHANGED FROM	DATE	CM. NO.	DRAFTS	CHECKER	ENG. APP.	REQ.	ITEM	PART NO.	DESCRIPTION	SYMBOL
Ø		REL TO PROD.	JUN 23 1969		AHa			1	1	HD 10004	HEAT SINK	
								1	2	PM 10096	HEAT SINK	
								A/R	3	GL 10009	EPOXY CONDUCTIVE	



THIS FACE TO BE SKIMMED
ON ITEM 1.

1. CEMENT ITEM 1 TO ITEM 2
USING CONDUCTIVE EPOXY,
ITEM 3.

NOTES:

AMC 32	PROJECT NO. 074 - 69	DATE MAY 20 69	ASSY. NO.	USED ON
MODEL				
MAXIMUM ALLOWABLE TOLERANCES HAVE BEEN DETERMINED AND DEVIATIONS WILL BE CAUSE FOR REJECTION. REMOVE ALL BURRS AND SHARP EDGES		IF IT IS FOUND DESIRABLE TO CHANGE ANY TOLERANCE OR OTHER DETAIL SPECIFIED ON THIS DRAWING NOTIFY THE PURCHASER PROMPTLY.		
TOLERANCES DEC. DIM. ± .X = .05 FRAC. DIM. ± 1/64 ANGULAR DIM. ± 0° 30'		SCALE NTC DIMENSIONS IN INCHES UNLESS OTHERWISE SPECIFIED DRILL; PUNCH, COMMERCIAL STOCK SIZES AND MANUFACTURERS TOLERANCES ARE NOT INCLUDED.		
ALL OTHERS				
STOCK SIZE		TMC (Canada) LIMITED OTTAWA ONTARIO		
MATERIAL	WEIGHT PER PC.	HEAT SINK ASEY		
TYPE & TEMPER		AHa		
		DRAWN		
		ELEC. DES. APP.		
		MECH. DES. APP.		
		CHECKED		
		FINAL APPROVAL		
		HD 10007		